



Cat[®] 272D XHP

SKID STEER LOADER

FEATURES:

The Cat[®] 272D XHP Skid Steer Loader, with its long wheel base and vertical lift design, delivers extended reach and lift height for quick and easy truck loading. Its stability and lifting performance provides excellent material handling. The 272D XHP features the following:

- **Sealed and pressurized cab** provides a cleaner and quieter operating environment.
- **Seat mounted adjustable joystick controls and air ride seat** make the D Series the industry leader in operator comfort.
- **High performance power train** provides maximum performance and production capability through the Electronic Torque Management system, standard two speed travel and an industry exclusive electronic hand/foot throttle with decel pedal capability.

- **Electronically controlled Cat C3.8 engine** provides high horsepower and torque while meeting U.S. EPA Tier 4 Interim (EU Stage IIIB) requirements.
- **Cat "Intelligent Leveling" system (ILEV)** provides industry leading technology, integration and exclusive optional features such as dual direction self level, work tool return to dig and work tool positioner.
- **XHP hydraulic system** provides high flow and high pressure that delivers industry leading hydraulic horsepower to efficiently run even the most power hungry work tools.
- **Standard Speed Sensitive Ride Control** system improves operation on rough terrain, enabling better load retention, increased productivity and greater operator comfort.
- **Broad range of performance matched Cat Work Tools** make the Cat Skid Steer Loader the most versatile machine on the job site.

Specifications

Engine

Engine Model	Cat [®] C3.8 (turbocharged)	
Gross Power SAE J1995	82 kW	110 hp
Net Power SAE 1349	79 kW	106 hp
Displacement	3.8 L	232 in ³
Stroke	120 mm	4.7 in
Bore	100 mm	3.9 in

Weights*

Operating Weight	4220 kg	9,304 lb
------------------	---------	----------

Power Train

Travel Speed (Forward or Reverse):		
One Speed	11.6 km/h	7.2 mph
Two Speed	16.6 km/h	10.3 mph

Hydraulic System

Hydraulic Flow – XHP:		
Max. Loader Hydraulic Pressure	28 000 kPa	4,061 psi
Max. Loader Hydraulic Flow	150 L/min	40 gal/min
Hydraulic Power (calculated)	70 kW	94 hp

Standard Flow Mode:

Loader Hydraulic Pressure	23 000 kPa	3,335 psi
Loader Hydraulic Flow	86.4 L/min	23 gal/min

*Operating Weight, Operating Specifications and Dimensions all based on 75 kg (165 lb) operator, all fluids, 2 speed, ride control, enclosed cab with glass door, side windows, air conditioning, air ride seat, counterweights, 1981 mm (78 in) Dirt Bucket, Cat PC 14 x 17.5 tires and manual quick coupler (unless otherwise noted).

Operating Specifications

Rated Operating Capacity	1633 kg	3,600 lb
Tipping Load	3266 kg	7,200 lb
Breakout Force, Tilt Cylinder	3315 kg	7,308 lb
Breakout Force, Lift Cylinder	2767 kg	6,100 lb

Cab

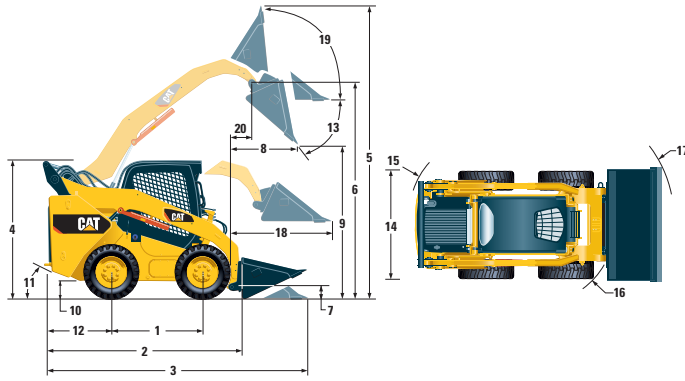
ROPS	SAE J1040 MAY94, ISO 3471:1994
FOPS	SAE J1043 SEPT87, ISO 3449:1992 Level I
FOPS Level II	SAE J231 JAN81, ISO 3449:1992 Level II

Service Refill Capacities

Chain Box, each side	8.6 L	2.3 gal
Cooling System	14 L	3.7 gal
Engine Crankcase	10 L	2.6 gal
Fuel Tank	117 L	30.8 gal
Hydraulic System	61 L	16 gal
Hydraulic Tank	39 L	10.3 gal



272D XHP Skid Steer Loader



Dimensions

1 Wheelbase	1386 mm	54.6 in
2 Length w/o Bucket	3119 mm	122.8 in
3 Length w/Bucket on Ground	3831 mm	150.8 in
4 Height to Top of Cab	2142 mm	84.3 in
5 Max. Overall Height	4086 mm	160.9 in
6 Bucket Pin Height at Max. Lift	3255 mm	128.1 in
7 Bucket Pin Height at Carry Position	200 mm	7.9 in
8 Reach at Max. Lift and Dump	747 mm	29.4 in
9 Clearance at Max. Lift and Dump	2456 mm	96.7 in
10 Ground Clearance	263 mm	10.4 in
11 Departure Angle	27°	
12 Bumper Overhang Behind Rear Axle	1084 mm	42.7 in
13 Maximum Dump Angle	52°	
14 Vehicle Width over Tires	1930 mm	76.0 in
15 Turning Radius from Center – Machine Rear	1874 mm	73.8 in
16 Turning Radius from Center – Coupler	1496 mm	58.9 in
17 Turning Radius from Center – Bucket	2310 mm	91.0 in
18 Max. Reach w/Arms Parallel to Ground	1249 mm	49.2 in
19 Rack Back Angle at Max. Height	83°	
20 Bucket Pin Reach at Max. Lift	371 mm	14.6 in

MANDATORY EQUIPMENT

- Quick Coupler, Mechanical or Electric
- Seat Belt, 50 mm (2 in) or 75 mm (3 in)

COMFORT PACKAGE

- Enclosed ROPS with Heat (C3): *Cup Holder, Radio Ready, Air Ride Seat, Air Conditioner with Heater and Defroster, Side Windows, Door (Glass or Polycarbonate)*

HYDRAULIC PERFORMANCE PACKAGE

- H3: *XHP Hydraulics, Dual Direction Electronic Self Level (raise and lower), Work Tool Return to Dig, Work Tool Positioner, Electronic Snubbing (Lift)*

STANDARD EQUIPMENT

ELECTRICAL

- 12 volt Electrical System
- 100 ampere Alternator
- Ignition Key Start/Stop Switch
- Lights: *Gauge Backlighting, Two Rear Tail Lights, Two Rear Halogen Working Lights, Two Adjustable Front Halogen Lights, Dome Light*
- Backup Alarm
- Heavy Duty Battery, 1,000 CCA

OPERATOR ENVIRONMENT

- Gauges: *Fuel Level, Hour Meter*
- Operator Warning System Indicators: *Air Filter Restriction, Alternator Output, Armrest Raised/Operator Out of Seat, Engine Coolant Temperature, Engine Oil Pressure, Glow Plug Activation, Hydraulic Filter Restriction, Hydraulic Oil Temperature, Park Brake Engages, Regeneration – Engine Emissions*
- Cloth Seat, Air Suspension
- Fold in Ergonomic Contoured Armrest
- Control Interlock System, when operator leaves seat or armrest raised: *Hydraulic System Disables, Hydrostatic Transmission Disables, Parking Brake Engages*
- ROPS Cab, Enclosed, Tilt Up
- FOPS, Level I
- Top, Rear and Side Windows
- Headliner, Deluxe
- Floor Mat
- Interior Rear View Mirror
- 12 volt Electric Socket
- Horn
- Hand (Dial) and Foot Throttle, Electronic with Decel Feature
- Advanced Machine Information and Control System (AMICS)

POWER TRAIN

- Cat® C3.8, Turbo, Tier 4 Interim (Stage IIIB) Certified Engine
- Air Cleaner, Dual Element, Radial Seal
- S-O-SSM Sampling Valve, Hydraulic Oil
- Filters, Cartridge-type, Hydraulic
- Filters, Cartridge-type, Fuel and Water Separator
- Radiator/Hydraulic Oil Cooler (side-by-side)
- Spring Applied, Hydraulically Released, Parking Brakes
- Hydrostatic Transmission, 2 Speed (standard)
- Four Wheel Chain Drive, 14 x 17.5 Tires

OTHER

- Engine Enclosure, Lockable
- Extended Life Antifreeze, -37° C (-34° F)
- Machine Tie Down Points (4)
- Support, Lift Arm
- Hydraulic Oil Level Sight Gauge
- Radiator Coolant Level Sight Gauge
- Radiator, Expansion Bottle
- Cat ToughGuard™ Hose
- Auxiliary, Hydraulics, Continuous Flow
- Heavy Duty, Flat Faced Quick Disconnects with Integrated Pressure Release
- Split D-Ring to Route Work Tool Hoses Along Side of Left Lift Arm
- Electrical Outlet, Beacon
- Belly Pan Cleanout
- Counterweights
- Variable Speed Demand Fan

OPTIONAL ATTACHMENTS

- Beacon, Rotating
- Engine Block Heater – 120V
- Oil, Hydraulic, Cold Operation
- Paint, Custom
- AM/FM/Weather Band Receiver with CD Player and Auxiliary Input Jack

For more complete information on Cat products, dealer services, and industry solutions, visit us on the web at www.cat.com

AEHQ6568 (01-12)

© 2012 Caterpillar
All Rights Reserved
Printed in U.S.A.

Materials and specifications are subject to change without notice. Featured machines in photos may include additional equipment. See your Cat dealer for available options.

CAT, CATERPILLAR, SAFETY.CAT.COM, their respective logos, "Caterpillar Yellow" and the "Power Edge" trade dress, as well as corporate and product identity used herein, are trademarks of Caterpillar and may not be used without permission.

