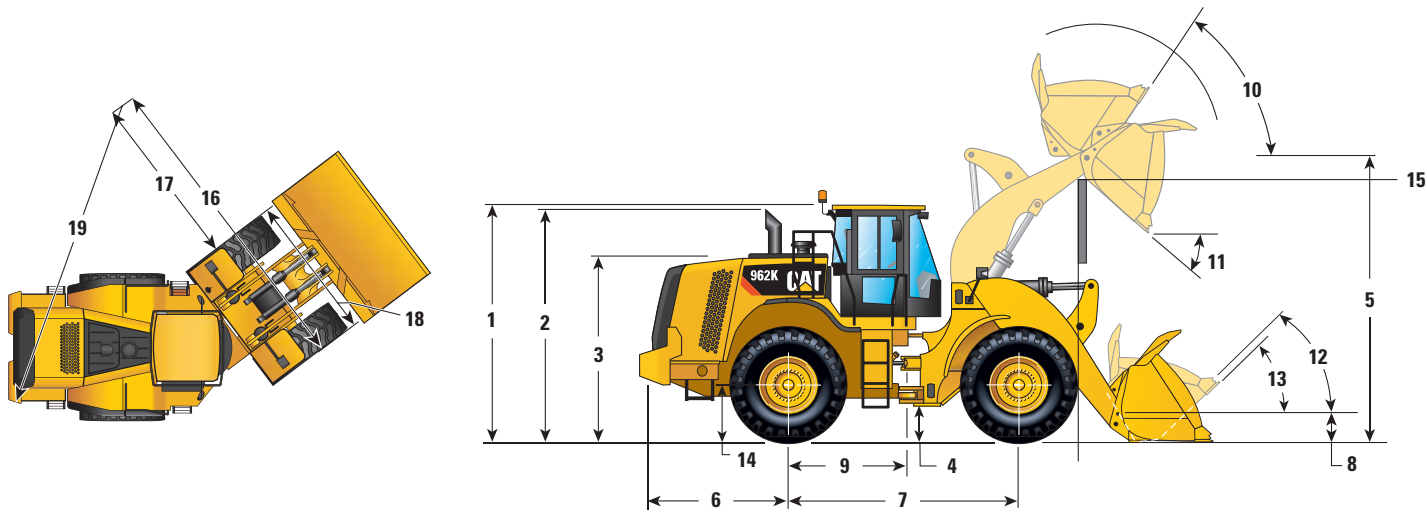


962K Wheel Loader

Dimensions

All dimensions are approximate and based on L3 Michelin XHA2 tires.



1 Height to Top of ROPS	3356 mm	11'0"
2 Height to Top of Exhaust Pipe	3099 mm	10'2"
3 Height to Top of Hood	2415 mm	7'11"
4 Ground Clearance	397 mm	1'3"
5 B-Pin Height – Standard	4237 mm	13'10"
B-Pin Height – High-Lift	4526 mm	14'10"
6 Center Line of Rear Axle to Edge of Counterweight	2055 mm	6'7"
7 Wheelbase	3350 mm	10'11"
8 B-Pin Height @ Carry – Standard	677 mm	2'7"
9 Center Line of Rear Axle to Hitch	1510 mm	4'11"
10 Rack Back @ Maximum Lift		55 degrees
11 Dump Angle @ Maximum Lift		49 degrees
12 Rack Back @ Carry		51 degrees
13 Rack Back @ Ground		39 degrees
14 Height to Center Line of Axle	746 mm	2'3"
15 Lift Arm Clearance	3472 mm	11'4"
Lift Arm Clearance @ High Lift	3625 mm	11'9"

Turning Radius

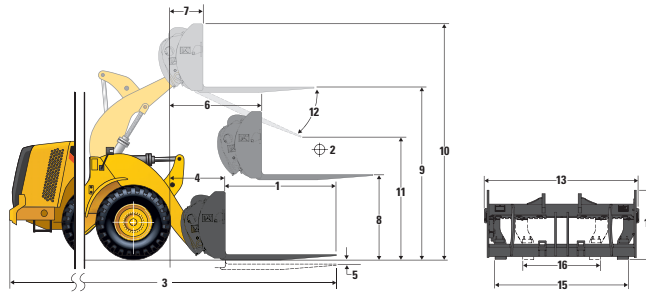
All dimensions are approximate and based on L3 Michelin XHA2 tires.

16 Clearance Circle to Outside of Tires	5952 mm	19'6"
17 Clearance Circle to Inside of Tires	3233 mm	10'7"
18 Width Over Tires	2719 mm	8'11"
19 Clearance Circle to Outside Edge of Counterweight	6025 mm	19'9"

962K Wheel Loader

Dimensions

All dimensions are approximate and based on L3 Michelin XHA2 tires.



962K Standard Linkage with Fusion Pallet Fork

1 Tine Length	1219 mm	48.0"	1524 mm	60.0"	1829 mm	72.0"	2438 mm	96.0"
2 Load Center	610 mm	24.0"	762 mm	30.0"	915 mm	36.0"	1219 mm	48.0"
Static Tipping Load – Straight (Forks Level)	10 733 kg	23,655 lb	10 192 kg	22,463 lb	9694 kg	21,366 lb	8801 kg	19,398 lb
Static Tipping Load – Articulated (Forks Level)	9241 kg	20,368 lb	8767 kg	19,322 lb	8329 kg	18,357 lb	7543 kg	16,625 lb
Rated Load (SAE J1197 – 50% FTSTL)	4621 kg	10,184 lb	4383 kg	9,661 lb	4165 kg	9,179 lb	3771 kg	8,312 lb
Rated Load (CEN EN 474-3 Rough Terrain – 60% FTSTL)	5545 kg	12,221 lb	5260 kg	11,593 lb	4997 kg	11,014 lb	4526 kg	9,975 lb
Rated Load (CEN EN 474-3 Firm and Level Ground – 80% FTSTL)	7393 kg	16,294 lb	7013 kg	15,457 lb	6663 kg	14,686 lb	6034 kg	13,300 lb
3 Maximum Overall Length	8737 mm	344.0"	9042 mm	356.0"	9347 mm	368.0"	9956 mm	392.0"
4 Reach with Forks at Ground Level	1307 mm	51.5"	1307 mm	51.5"	1307 mm	51.5"	1307 mm	51.5"
5 Ground to Top of Tine at Minimum Height and Fork Level	23 mm	0.9"	23 mm	0.9"	23 mm	0.9"	23 mm	0.9"
6 Reach with Arms Horizontal and Forks Level	1826 mm	71.9"	1826 mm	71.9"	1826 mm	71.9"	1826 mm	71.9"
7 Reach with Fork at Maximum Height	947 mm	37.3"	947 mm	37.3"	947 mm	37.3"	947 mm	37.3"
8 Ground to Top of Tine with Arms Horizontal and Fork Level	1888 mm	74.3"	1888 mm	74.3"	1888 mm	74.3"	1888 mm	74.3"
9 Ground to Top of Tine at Maximum Height and Fork Level	4040 mm	159.1"	4040 mm	159.1"	4040 mm	159.1"	4040 mm	159.1"
10 Overall Height of Fork at Full Lift (top of carriage to ground)	5080 mm	200.0"	5080 mm	200.0"	5080 mm	200.0"	5080 mm	200.0"
11 Clearance at Full Lift and Maximum Dump	2762 mm	108.8"	2522 mm	99.3"	2281 mm	89.8"	1801 mm	70.9"
12 Maximum Discharge Angle from Horizontal	52 degrees		52 degrees		52 degrees		52 degrees	
13 Overall Carriage Width	2528 mm	99.5"	2528 mm	99.5"	2528 mm	99.5"	2528 mm	99.5"
14 Overall Carriage Height	1130 mm	44.5"	1130 mm	44.5"	1130 mm	44.5"	1130 mm	44.5"
15 Outside Tine Width (Maximum Spread)	2178 mm	85.7"	2178 mm	85.7"	2178 mm	85.7"	2178 mm	85.7"
16 Outside Tine Width (Minimum Spread)	576 mm	22.7"	576 mm	22.7"	576 mm	22.7"	576 mm	22.7"
Tine Width (Single Tine)	180 mm	7.1"	180 mm	7.1"	180 mm	7.1"	180 mm	7.1"
Tine Thickness	90 mm	3.5"	90 mm	3.5"	90 mm	3.5"	90 mm	3.5"
Operating Weight	20 331 kg	44,809 lb	20 394 kg	44,948 lb	20 456 kg	45,084 lb	20 581 kg	45,360 lb

NOTE: Static tipping loads and operating weight are based on the following loader configuration: L3 Michelin XHA tires, air conditioning, ride control, power train guard, full fluids, fuel tank, coolant, lubricants, and operator.

Specifications and ratings conform to the following standards: SAE* J1197, SAE J732, CEN** EN 474-3.

The rated operating load for a loader equipped with a pallet fork is determined by:

SAE J1197: 50% of full turn static tipping load or hydraulic limit.

CEN EN 474-3: 60% of full turn static tipping load on rough terrain or hydraulic limit.

CEN EN 474-3: 80% of full turn static tipping load on firm and level ground or hydraulic limit.

*SAE – Society of Automotive Engineers

**CEN – European Committee for Standardization

962K Wheel Loader

Operating Specifications

Bucket Type		General Purpose – Pin On					
		Bolt-On Edges	Teeth and Segments	Bolt-On Edges	Teeth and Segments	Bolt-On Edges	Teeth and Segments
Capacity – Rated (§)	m ³	2.70	2.70	2.90	2.90	3.10	3.10
	yd ³	3.53	3.53	3.79	3.79	4.05	4.05
Capacity – Struck (§)	m ³	2.30	2.30	2.55	2.55	2.76	2.76
	yd ³	3.01	3.01	3.34	3.34	3.61	3.61
Width (§)	mm	2927	2994	2927	2994	2927	2994
	ft/in	9'7"	9'9"	9'7"	9'9"	9'7"	9'9"
Dump Clearance at Maximum Lift and 45° Discharge (§)	mm	3191	3076	3136	3019	3093	2975
	ft/in	10'5"	10'1"	10'3"	9'10"	10'1"	9'9"
Reach at Maximum Lift and 45° Discharge (§)	mm	1290	1403	1328	1440	1363	1474
	ft/in	4'2"	4'7"	4'4"	4'8"	4'5"	4'10"
Reach at Level Lift Arm and Bucket Level (§)	mm	2660	2821	2729	2890	2786	2947
	ft/in	8'8"	9'3"	8'11"	9'5"	9'1"	9'8"
Digging Depth (§)	mm	88	88	88	88	88	88
	in	3.5"	3.5"	3.5"	3.5"	3.5"	3.5"
Overall Length	mm	8307	8479	8376	8548	8433	8605
	ft/in	27'4"	27'10"	27'6"	28'1"	27'8"	28'3"
Overall Height with Bucket at Maximum Lift	mm	5609	5609	5681	5681	5742	5742
	ft/in	18'5"	18'5"	18'8"	18'8"	18'11"	18'11"
Loader Clearance Circle with Bucket at Carry Position (§)	mm	13 785	13 953	13 825	13 995	13 859	14 029
	ft/in	45'3"	45'10"	45'5"	45'11"	45'6"	46'1"
Static Tipping Load, Straight (ISO)*	kg	14 003	13 866	13 854	13 716	13 753	13 613
	lb	30,863	30,561	30,536	30,230	30,312	30,005
Static Tipping Load, Straight (Rigid Tire)*	kg	14 746	14 608	14 601	14 461	14 502	14 362
	lb	32,501	32,196	32,180	31,872	31,964	31,654
Static Tipping Load, Articulated (ISO)*	kg	12 053	11 916	11 910	11 772	11 816	11 677
	lb	26,565	26,262	26,251	25,946	26,043	25,736
Static Tipping Load, Articulated (Rigid Tire)*	kg	12 817	12 679	12 678	12 538	12 587	12 446
	lb	28,249	27,944	27,942	27,634	27,742	27,431
Breakout Force** (§)	kN	195	194	183	182	175	174
	lb	43,943	43,707	41,302	41,066	39,361	39,125
Operating Weight*	kg	20 252	20 360	20 336	20 444	20 373	20 481
	lb	44,634	44,872	44,821	45,059	44,902	45,140

* Static tipping loads and operating weights shown are based on a global machine configuration with Michelin 23.5R25 XHA2 L3 Radial tires, full fluids, operator, standard counterweight, standard linkage, cold start, roading fenders, product link, open differential axles (front/rear), power train guard, secondary steering, and sound suppression.

** Measured 102 mm (4") behind tip of cutting edge with bucket hinge pin as pivot point in accordance with SAE J732C.

*** Rock bucket specifications are given on Michelin 23.5R25 XLDD2 L5 Radial tires.

(§) Specifications and ratings conform to all applicable standards recommended by the Society of Automotive Engineers, including SAE Standard J732C governing loader ratings.

(ISO) Full compliance to ISO 14397-1 (2007) Sections 1 thru 6, which requires 2% verification between calculations and testing.

(Rigid Tire) Compliance to ISO 14397-1 (2007) Sections 1 thru 5.

962K Wheel Loader

Operating Specifications

Bucket Type		General Purpose – Pin On					
		Bolt-On Edges	Teeth and Segments	Bolt-On Edges	Teeth and Segments	Bolt-On Edges	Teeth and Segments
Capacity – Rated (§)	m ³	3.30	3.30	3.40	3.40	3.60	3.60
	yd ³	4.32	4.32	4.45	4.45	4.71	4.71
Capacity – Struck (§)	m ³	2.94	2.94	3.04	3.04	3.18	3.18
	yd ³	3.85	3.85	3.98	3.98	4.16	4.16
Width (§)	mm	2927	2994	2927	2994	2927	2994
	ft/in	9'7"	9'9"	9'7"	9'9"	9'7"	9'9"
Dump Clearance at Maximum Lift and 45° Discharge (§)	mm	3054	2936	3036	2917	3010	2890
	ft/in	10'0"	9'7"	9'11"	9'6"	9'10"	9'5"
Reach at Maximum Lift and 45° Discharge (§)	mm	1392	1502	1406	1516	1428	1537
	ft/in	4'6"	4'11"	4'7"	4'11"	4'8"	5'0"
Reach at Level Lift Arm and Bucket Level (§)	mm	2835	2996	2859	3020	2894	3055
	ft/in	9'3"	9'9"	9'4"	9'10"	9'5"	10'0"
Digging Depth (§)	mm	88	88	88	88	88	88
	in	3.5"	3.5"	3.5"	3.5"	3.5"	3.5"
Overall Length	mm	8482	8654	8506	8678	8541	8713
	ft/in	27'10"	28'5"	27'11"	28'6"	28'1"	28'8"
Overall Height with Bucket at Maximum Lift	mm	5788	5788	5813	5813	5847	5847
	ft/in	19'0"	19'0"	19'1"	19'1"	19'3"	19'3"
Loader Clearance Circle with Bucket at Carry Position (§)	mm	13 888	14 059	13 903	14 074	13 924	14 095
	ft/in	45'7"	46'2"	45'8"	46'3"	45'9"	46'3"
Static Tipping Load, Straight (ISO)*	kg	13 626	13 486	13 580	13 439	13 505	13 364
	lb	30,033	29,724	29,932	29,621	29,766	29,454
Static Tipping Load, Straight (Rigid Tire)*	kg	14 377	14 236	14 332	14 190	14 259	14 116
	lb	31,688	31,376	31,589	31,276	31,427	31,112
Static Tipping Load, Articulated (ISO)*	kg	11 695	11 555	11 652	11 511	11 581	11 439
	lb	25,777	25,468	25,681	25,370	25,525	25,213
Static Tipping Load, Articulated (Rigid Tire)*	kg	12 467	12 326	12 425	12 283	12 355	12 212
	lb	27,479	27,167	27,385	27,071	27,232	26,917
Breakout Force** (§)	kN	168	167	164	163	160	159
	lb	37,784	37,548	37,060	36,824	36,047	35,811
Operating Weight*	kg	20 443	20 551	20 466	20 574	20 503	20 611
	lb	45,055	45,293	45,108	45,346	45,188	45,426

* Static tipping loads and operating weights shown are based on a global machine configuration with Michelin 23.5R25 XHA2 L3 Radial tires, full fluids, operator, standard counterweight, standard linkage, cold start, roading fenders, product link, open differential axles (front/rear), power train guard, secondary steering, and sound suppression.

** Measured 102 mm (4") behind tip of cutting edge with bucket hinge pin as pivot point in accordance with SAE J732C.

*** Rock bucket specifications are given on Michelin 23.5R25 XLDD2 L5 Radial tires.

(§) Specifications and ratings conform to all applicable standards recommended by the Society of Automotive Engineers, including SAE Standard J732C governing loader ratings.

(ISO) Full compliance to ISO 14397-1 (2007) Sections 1 thru 6, which requires 2% verification between calculations and testing.

(Rigid Tire) Compliance to ISO 14397-1 (2007) Sections 1 thru 5.

962K Wheel Loader

Operating Specifications

Bucket Type		General Purpose – Pin On		Material Handling – Pin On			
		Bolt-On Edges	Teeth and Segments	Bolt-On Edges	Teeth and Segments	Bolt-On Edges	Teeth and Segments
Capacity – Rated (§)	m ³	3.80	3.80	2.70	2.70	2.90	2.90
	yd ³	4.97	4.97	3.53	3.53	3.79	3.79
Capacity – Struck (§)	m ³	3.36	3.36	2.32	2.32	2.52	2.52
	yd ³	4.39	4.39	3.03	3.03	3.30	3.30
Width (§)	mm	2927	2994	2927	2994	2927	2994
	ft/in	9'7"	9'9"	9'7"	9'9"	9'7"	9'9"
Dump Clearance at Maximum Lift and 45° Discharge (§)	mm	2975	2855	3112	2987	3070	2944
	ft/in	9'9"	9'4"	10'2"	9'9"	10'0"	9'7"
Reach at Maximum Lift and 45° Discharge (§)	mm	1457	1566	1206	1308	1248	1350
	ft/in	4'9"	5'1"	3'11"	4'3"	4'1"	4'5"
Reach at Level Lift Arm and Bucket Level (§)	mm	2940	3101	2679	2840	2739	2900
	ft/in	9'7"	10'2"	8'9"	9'3"	8'11"	9'6"
Digging Depth (§)	mm	88	88	88	88	88	88
	in	3.5"	3.5"	3.5"	3.5"	3.5"	3.5"
Overall Length	mm	8587	8759	8326	8498	8386	8558
	ft/in	28'3"	28'9"	27'4"	27'11"	27'7"	28'1"
Overall Height with Bucket at Maximum Lift	mm	5894	5894	5835	5835	5192	5192
	ft/in	19'5"	19'5"	19'2"	19'2"	17'1"	17'1"
Loader Clearance Circle with Bucket at Carry Position (§)	mm	13 952	14 124	13 796	13 965	13 831	14 001
	ft/in	45'10"	46'5"	45'4"	45'10"	45'5"	46'0"
Static Tipping Load, Straight (ISO)*	kg	13 400	13 258	13 829	13 693	13 706	13 569
	lb	29,534	29,220	30,480	30,180	30,209	29,906
Static Tipping Load, Straight (Rigid Tire)*	kg	14 155	14 011	14 556	14 418	14 435	14 296
	lb	31,198	30,881	32,081	31,778	31,815	31,510
Static Tipping Load, Articulated (ISO)*	kg	11 481	11 339	11 899	11 763	11 783	11 646
	lb	25,304	24,991	26,226	25,926	25,971	25,668
Static Tipping Load, Articulated (Rigid Tire)*	kg	12 257	12 113	12 647	12 510	12 534	12 395
	lb	27,015	26,698	27,874	27,572	27,624	27,319
Breakout Force** (§)	kN	154	153	192	191	182	181
	lb	34,784	34,548	43,166	42,930	40,945	40,709
Operating Weight*	kg	20 558	20 666	20 274	20 382	20 330	20 438
	lb	45,308	45,546	44,684	44,922	44,807	45,045

* Static tipping loads and operating weights shown are based on a global machine configuration with Michelin 23.5R25 XHA2 L3 Radial tires, full fluids, operator, standard counterweight, standard linkage, cold start, roading fenders, product link, open differential axles (front/rear), power train guard, secondary steering, and sound suppression.

** Measured 102 mm (4") behind tip of cutting edge with bucket hinge pin as pivot point in accordance with SAE J732C.

*** Rock bucket specifications are given on Michelin 23.5R25 XLDD2 L5 Radial tires.

(§) Specifications and ratings conform to all applicable standards recommended by the Society of Automotive Engineers, including SAE Standard J732C governing loader ratings.

(ISO) Full compliance to ISO 14397-1 (2007) Sections 1 thru 6, which requires 2% verification between calculations and testing.

(Rigid Tire) Compliance to ISO 14397-1 (2007) Sections 1 thru 5.

962K Wheel Loader

Operating Specifications

Bucket Type		Material Handling – Pin On					
		Bolt-On Edges	Teeth and Segments	Bolt-On Edges	Teeth and Segments	Bolt-On Edges	Teeth and Segments
Edge Type							
Capacity – Rated (§)	m ³	3.10	3.10	3.30	3.30	3.40	3.40
	yd ³	4.05	4.05	4.32	4.32	4.45	4.45
Capacity – Struck (§)	m ³	2.61	2.61	2.78	2.78	2.92	2.92
	yd ³	3.41	3.41	3.64	3.64	3.82	3.82
Width (§)	mm	2927	2994	2927	2994	2927	2994
	ft/in	9'7"	9'9"	9'7"	9'9"	9'7"	9'9"
Dump Clearance at Maximum Lift and 45° Discharge (§)	mm	3038	2913	3006	2881	2978	2852
	ft/in	9'11"	9'6"	9'10"	9'5"	9'9"	9'4"
Reach at Maximum Lift and 45° Discharge (§)	mm	1280	1382	1312	1414	1340	1442
	ft/in	4'2"	4'6"	4'3"	4'7"	4'4"	4'8"
Reach at Level Lift Arm and Bucket Level (§)	mm	2784	2945	2829	2990	2869	3030
	ft/in	9'1"	9'7"	9'3"	9'9"	9'4"	9'11"
Digging Depth (§)	mm	88	88	88	88	88	88
	in	3.5"	3.5"	3.5"	3.5"	3.5"	3.5"
Overall Length	mm	8431	8603	8476	8648	8516	8688
	ft/in	27'8"	28'3"	27'10"	28'5"	28'0"	28'7"
Overall Height with Bucket at Maximum Lift	mm	5700	5700	5744	5744	5783	5783
	ft/in	18'9"	18'9"	18'11"	18'11"	19'0"	19'0"
Loader Clearance Circle with Bucket at Carry Position (§)	mm	13 858	14 028	13 885	14 055	13 909	14 080
	ft/in	45'6"	46'1"	45'7"	46'2"	45'8"	46'3"
Static Tipping Load, Straight (ISO)*	kg	13 608	13 469	13 511	13 372	13 427	13 288
	lb	29,992	29,687	29,778	29,472	29,594	29,287
Static Tipping Load, Straight (Rigid Tire)*	kg	14 338	14 199	14 243	14 103	14 161	14 020
	lb	31,602	31,295	31,392	31,083	31,211	30,901
Static Tipping Load, Articulated (ISO)*	kg	11 690	11 552	11 599	11 460	11 520	11 380
	lb	25,766	25,461	25,564	25,258	25,390	25,082
Static Tipping Load, Articulated (Rigid Tire)*	kg	12 442	12 303	12 352	12 212	12 275	12 134
	lb	27,423	27,116	27,225	26,916	27,054	26,744
Breakout Force** (§)	kN	175	174	168	167	163	162
	lb	39,398	39,162	37,957	37,721	36,755	36,519
Operating Weight*	kg	20 380	20 488	20 428	20 536	20 468	20 576
	lb	44,918	45,156	45,023	45,261	45,112	45,350

* Static tipping loads and operating weights shown are based on a global machine configuration with Michelin 23.5R25 XHA2 L3 Radial tires, full fluids, operator, standard counterweight, standard linkage, cold start, roading fenders, product link, open differential axles (front/rear), power train guard, secondary steering, and sound suppression.

** Measured 102 mm (4") behind tip of cutting edge with bucket hinge pin as pivot point in accordance with SAE J732C.

*** Rock bucket specifications are given on Michelin 23.5R25 XLDD2 L5 Radial tires.

(§) Specifications and ratings conform to all applicable standards recommended by the Society of Automotive Engineers, including SAE Standard J732C governing loader ratings.

(ISO) Full compliance to ISO 14397-1 (2007) Sections 1 thru 6, which requires 2% verification between calculations and testing.

(Rigid Tire) Compliance to ISO 14397-1 (2007) Sections 1 thru 5.

962K Wheel Loader

Operating Specifications

Bucket Type		Material Handling – Pin On				Heavy Duty Material Handling – Pin On	
		Bolt-On Edges	Teeth and Segments	Bolt-On Edges	Teeth and Segments	Bolt-On Edges	Teeth and Segments
Capacity – Rated (§)	m ³	3.60	3.60	3.80	3.80	3.30	3.30
	yd ³	4.71	4.71	4.97	4.97	4.32	4.32
Capacity – Struck (§)	m ³	3.15	3.15	3.28	3.28	2.78	2.78
	yd ³	4.12	4.12	4.29	4.29	3.64	3.64
Width (§)	mm	2927	2994	2927	2994	2927	2994
	ft/in	9'7"	9'9"	9'7"	9'9"	9'7"	9'9"
Dump Clearance at Maximum Lift and 45° Discharge (§)	mm	2946	2821	2910	2785	3006	2881
	ft/in	9'8"	9'3"	9'6"	9'1"	9'10"	9'5"
Reach at Maximum Lift and 45° Discharge (§)	mm	1372	1474	1408	1510	1312	1414
	ft/in	4'6"	4'10"	4'7"	4'11"	4'3"	4'7"
Reach at Level Lift Arm and Bucket Level (§)	mm	2914	3075	2965	3126	2829	2990
	ft/in	9'6"	10'1"	9'8"	10'3"	9'3"	9'9"
Digging Depth (§)	mm	88	88	88	88	88	88
	in	3.5"	3.5"	3.5"	3.5"	3.5"	3.5"
Overall Length	mm	8561	8733	8612	8784	8476	8648
	ft/in	28'2"	28'8"	28'4"	28'10"	27'10"	28'5"
Overall Height with Bucket at Maximum Lift	mm	5831	5831	5879	5879	5753	5753
	ft/in	19'2"	19'2"	19'4"	19'4"	18'11"	18'11"
Loader Clearance Circle with Bucket at Carry Position (§)	mm	13 936	14 108	13 967	14 139	13 885	14 055
	ft/in	45'9"	46'4"	45'10"	46'5"	45'7"	46'2"
Static Tipping Load, Straight (ISO)*	kg	13 334	13 194	13 226	13 084	13 436	13 294
	lb	29,389	29,079	29,150	28,838	29,613	29,301
Static Tipping Load, Straight (Rigid Tire)*	kg	14 069	13 927	13 962	13 820	14 168	14 025
	lb	31,009	30,697	30,774	30,459	31,227	30,912
Static Tipping Load, Articulated (ISO)*	kg	11 432	11 291	11 329	11 188	11 524	11 382
	lb	25,196	24,887	24,970	24,659	25,399	25,087
Static Tipping Load, Articulated (Rigid Tire)*	kg	12 188	12 047	12 088	11 945	12 277	12 135
	lb	26,864	26,552	26,642	26,327	27,060	26,746
Breakout Force** (§)	kN	157	156	151	150	168	167
	lb	35,483	35,247	34,128	33,891	37,831	37,585
Operating Weight*	kg	20 512	20 620	20 566	20 674	20 499	20 607
	lb	45,208	45,446	45,327	45,565	45,180	45,418

* Static tipping loads and operating weights shown are based on a global machine configuration with Michelin 23.5R25 XHA2 L3 Radial tires, full fluids, operator, standard counterweight, standard linkage, cold start, roading fenders, product link, open differential axles (front/rear), power train guard, secondary steering, and sound suppression.

** Measured 102 mm (4") behind tip of cutting edge with bucket hinge pin as pivot point in accordance with SAE J732C.

*** Rock bucket specifications are given on Michelin 23.5R25 XLDD2 L5 Radial tires.

(§) Specifications and ratings conform to all applicable standards recommended by the Society of Automotive Engineers, including SAE Standard J732C governing loader ratings.

(ISO) Full compliance to ISO 14397-1 (2007) Sections 1 thru 6, which requires 2% verification between calculations and testing.

(Rigid Tire) Compliance to ISO 14397-1 (2007) Sections 1 thru 5.

962K Wheel Loader

Operating Specifications

Bucket Type		Heavy Duty Material Handling – Pin On					
		Bolt-On Edges	Teeth and Segments	Bolt-On Edges	Teeth and Segments	Bolt-On Edges	Teeth and Segments
Capacity – Rated (§)	m ³	3.40	3.40	3.60	3.60	3.80	3.80
	yd ³	4.45	4.45	4.71	4.71	4.97	4.97
Capacity – Struck (§)	m ³	3.03	3.03	3.20	3.20	3.28	3.28
	yd ³	3.96	3.96	4.19	4.19	4.29	4.29
Width (§)	mm	2927	2994	2927	2994	2927	2994
	ft/in	9'7"	9'9"	9'7"	9'9"	9'7"	9'9"
Dump Clearance at Maximum Lift and 45° Discharge (§)	mm	2978	2852	2943	2817	2910	2785
	ft/in	9'9"	9'4"	9'7"	9'2"	9'6"	9'1"
Reach at Maximum Lift and 45° Discharge (§)	mm	1340	1442	1375	1477	1408	1510
	ft/in	4'4"	4'8"	4'6"	4'10"	4'7"	4'11"
Reach at Level Lift Arm and Bucket Level (§)	mm	2869	3030	2919	3080	2965	3126
	ft/in	9'4"	9'11"	9'6"	10'1"	9'8"	10'3"
Digging Depth (§)	mm	88	88	88	88	88	88
	in	3.5"	3.5"	3.5"	3.5"	3.5"	3.5"
Overall Length	mm	8516	8688	8566	8738	8612	8784
	ft/in	28'0"	28'7"	28'2"	28'9"	28'4"	28'10"
Overall Height with Bucket at Maximum Lift	mm	5792	5792	5837	5837	5866	5866
	ft/in	19'1"	19'1"	19'2"	19'2"	19'3"	19'3"
Loader Clearance Circle with Bucket at Carry Position (§)	mm	13 909	14 080	13 939	14 111	13 967	14 139
	ft/in	45'8"	46'3"	45'9"	46'4"	45'10"	46'5"
Static Tipping Load, Straight (ISO)*	kg	13 313	13 171	13 201	13 059	13 103	12 960
	lb	29,342	29,029	29,097	28,782	28,880	28,564
Static Tipping Load, Straight (Rigid Tire)*	kg	14 047	13 903	13 936	13 792	13 840	13 695
	lb	30,959	30,644	30,716	30,399	30,503	30,184
Static Tipping Load, Articulated (ISO)*	kg	11 405	11 263	11 300	11 157	11 207	11 063
	lb	25,138	24,825	24,906	24,591	24,700	24,384
Static Tipping Load, Articulated (Rigid Tire)*	kg	12 160	12 017	12 057	11 912	11 965	11 820
	lb	26,802	26,486	26,573	26,256	26,371	26,052
Breakout Force** (§)	kN	162	161	156	155	151	150
	lb	36,588	36,342	35,174	34,928	33,952	33,706
Operating Weight*	kg	20 576	20 684	20 628	20 736	20 677	20 785
	lb	45,349	45,587	45,464	45,702	45,572	45,810

* Static tipping loads and operating weights shown are based on a global machine configuration with Michelin 23.5R25 XHA2 L3 Radial tires, full fluids, operator, standard counterweight, standard linkage, cold start, roading fenders, product link, open differential axles (front/rear), power train guard, secondary steering, and sound suppression.

** Measured 102 mm (4") behind tip of cutting edge with bucket hinge pin as pivot point in accordance with SAE J732C.

*** Rock bucket specifications are given on Michelin 23.5R25 XLDD2 L5 Radial tires.

(§) Specifications and ratings conform to all applicable standards recommended by the Society of Automotive Engineers, including SAE Standard J732C governing loader ratings.

(ISO) Full compliance to ISO 14397-1 (2007) Sections 1 thru 6, which requires 2% verification between calculations and testing.

(Rigid Tire) Compliance to ISO 14397-1 (2007) Sections 1 thru 5.

962K Wheel Loader

Operating Specifications

Bucket Type		General Purpose – Fusion QC					
		Bolt-On Edges	Teeth and Segments	Bolt-On Edges	Teeth and Segments	Bolt-On Edges	Teeth and Segments
Capacity – Rated (§)	m ³	2.70	2.70	2.90	2.90	3.10	3.10
	yd ³	3.53	3.53	3.79	3.79	4.05	4.05
Capacity – Struck (§)	m ³	2.30	2.30	2.55	2.55	2.76	2.76
	yd ³	3.01	3.01	3.34	3.34	3.61	3.61
Width (§)	mm	2927	2994	2927	2994	2927	2994
	ft/in	9'7"	9'9"	9'7"	9'9"	9'7"	9'9"
Dump Clearance at Maximum Lift and 45° Discharge (§)	mm	3153	3037	3097	2980	3053	2935
	ft/in	10'4"	9'11"	10'1"	9'9"	10'0"	9'7"
Reach at Maximum Lift and 45° Discharge (§)	mm	1336	1449	1374	1485	1408	1519
	ft/in	4'4"	4'9"	4'6"	4'10"	4'7"	4'11"
Reach at Level Lift Arm and Bucket Level (§)	mm	2720	2881	2789	2950	2846	3007
	ft/in	8'11"	9'5"	9'1"	9'8"	9'4"	9'10"
Digging Depth (§)	mm	88	88	88	88	88	88
	in	3.5"	3.5"	3.5"	3.5"	3.5"	3.5"
Overall Length	mm	8367	8539	8436	8608	8493	8665
	ft/in	27'6"	28'1"	27'9"	28'3"	27'11"	28'6"
Overall Height with Bucket at Maximum Lift	mm	5641	5641	5714	5714	5775	5775
	ft/in	18'7"	18'7"	18'9"	18'9"	19'0"	19'0"
Loader Clearance Circle with Bucket at Carry Position (§)	mm	13 811	13 982	13 852	14 024	13 887	14 060
	ft/in	45'4"	45'11"	45'6"	46'1"	45'7"	46'2"
Static Tipping Load, Straight (ISO)*	kg	13 391	13 255	13 270	13 132	13 152	13 013
	lb	29,515	29,214	29,247	28,943	28,988	28,682
Static Tipping Load, Straight (Rigid Tire)*	kg	14 124	13 987	14 006	13 867	13 891	13 751
	lb	31,131	30,827	30,870	30,563	30,616	30,307
Static Tipping Load, Articulated (ISO)*	kg	11 470	11 333	11 355	11 217	11 244	11 105
	lb	25,281	24,979	25,027	24,722	24,783	24,477
Static Tipping Load, Articulated (Rigid Tire)*	kg	12 225	12 087	12 112	11 973	12 004	11 864
	lb	26,944	26,640	26,696	26,389	26,458	26,149
Breakout Force** (§)	kN	185	184	174	173	166	165
	lb	41,637	41,401	39,256	39,020	37,469	37,233
Operating Weight*	kg	20 726	20 834	20 789	20 897	20 843	20 951
	lb	45,680	45,918	45,818	46,056	45,937	46,175

* Static tipping loads and operating weights shown are based on a global machine configuration with Michelin 23.5R25 XHA2 L3 Radial tires, full fluids, operator, standard counterweight, standard linkage, cold start, roading fenders, product link, open differential axles (front/rear), power train guard, secondary steering, and sound suppression.

** Measured 102 mm (4") behind tip of cutting edge with bucket hinge pin as pivot point in accordance with SAE J732C.

*** Rock bucket specifications are given on Michelin 23.5R25 XLDD2 L5 Radial tires.

(§) Specifications and ratings conform to all applicable standards recommended by the Society of Automotive Engineers, including SAE Standard J732C governing loader ratings.

(ISO) Full compliance to ISO 14397-1 (2007) Sections 1 thru 6, which requires 2% verification between calculations and testing.

(Rigid Tire) Compliance to ISO 14397-1 (2007) Sections 1 thru 5.

962K Wheel Loader

Operating Specifications

Bucket Type		General Purpose – Fusion QC					
		Bolt-On Edges	Teeth and Segments	Bolt-On Edges	Teeth and Segments	Bolt-On Edges	Teeth and Segments
Capacity – Rated (§)	m ³	3.30	3.30	3.40	3.40	3.60	3.60
	yd ³	4.32	4.32	4.45	4.45	4.71	4.71
Capacity – Struck (§)	m ³	2.94	2.94	3.04	3.04	3.18	3.18
	yd ³	3.85	3.85	3.98	3.98	4.16	4.16
Width (§)	mm	2927	2994	2927	2994	2927	2994
	ft/in	9'7"	9'9"	9'7"	9'9"	9'7"	9'9"
Dump Clearance at Maximum Lift and 45° Discharge (§)	mm	3015	2896	2996	2877	2970	2850
	ft/in	9'10"	9'6"	9'9"	9'5"	9'8"	9'4"
Reach at Maximum Lift and 45° Discharge (§)	mm	1437	1547	1451	1561	1473	1582
	ft/in	4'8"	5'0"	4'9"	5'1"	4'10"	5'2"
Reach at Level Lift Arm and Bucket Level (§)	mm	2895	3056	2919	3080	2954	3115
	ft/in	9'5"	10'0"	9'6"	10'1"	9'8"	10'2"
Digging Depth (§)	mm	88	88	88	88	88	88
	in	3.5"	3.5"	3.5"	3.5"	3.5"	3.5"
Overall Length	mm	8542	8714	8566	8738	8601	8773
	ft/in	28'1"	28'8"	28'2"	28'9"	28'3"	28'10"
Overall Height with Bucket at Maximum Lift	mm	5821	5821	5847	5847	5881	5881
	ft/in	19'2"	19'2"	19'3"	19'3"	19'4"	19'4"
Loader Clearance Circle with Bucket at Carry Position (§)	mm	13 917	14 090	13 932	14 105	13 953	14 127
	ft/in	45'8"	46'3"	45'9"	46'4"	45'10"	46'5"
Static Tipping Load, Straight (ISO)*	kg	13 056	12 916	13 011	12 871	12 941	12 800
	lb	28,776	28,467	28,677	28,368	28,524	28,213
Static Tipping Load, Straight (Rigid Tire)*	kg	13 796	13 655	13 753	13 611	13 684	13 542
	lb	30,408	30,097	30,312	29,999	30,161	29,847
Static Tipping Load, Articulated (ISO)*	kg	11 154	11 014	11 111	10 971	11 045	10 904
	lb	24,583	24,275	24,490	24,180	24,344	24,034
Static Tipping Load, Articulated (Rigid Tire)*	kg	11 915	11 774	11 874	11 732	11 810	11 667
	lb	26,262	25,951	26,171	25,859	26,029	25,715
Breakout Force** (§)	kN	160	159	157	156	153	152
	lb	36,044	35,808	35,379	35,143	34,449	34,213
Operating Weight*	kg	20 889	20 997	20 913	21 021	20 947	21 055
	lb	46,039	46,277	46,091	46,329	46,166	46,404

* Static tipping loads and operating weights shown are based on a global machine configuration with Michelin 23.5R25 XHA2 L3 Radial tires, full fluids, operator, standard counterweight, standard linkage, cold start, roading fenders, product link, open differential axles (front/rear), power train guard, secondary steering, and sound suppression.

** Measured 102 mm (4") behind tip of cutting edge with bucket hinge pin as pivot point in accordance with SAE J732C.

*** Rock bucket specifications are given on Michelin 23.5R25 XLDD2 L5 Radial tires.

(§) Specifications and ratings conform to all applicable standards recommended by the Society of Automotive Engineers, including SAE Standard J732C governing loader ratings.

(ISO) Full compliance to ISO 14397-1 (2007) Sections 1 thru 6, which requires 2% verification between calculations and testing.

(Rigid Tire) Compliance to ISO 14397-1 (2007) Sections 1 thru 5.

962K Wheel Loader

Operating Specifications

Bucket Type		General Purpose – Fusion QC		Material Handling – Fusion QC			
		Bolt-On Edges	Teeth and Segments	Bolt-On Edges	Teeth and Segments	Bolt-On Edges	Teeth and Segments
Capacity – Rated (§)	m ³	3.80	3.80	2.70	2.70	2.90	2.90
	yd ³	4.97	4.97	3.53	3.53	3.79	3.79
Capacity – Struck (§)	m ³	3.36	3.36	2.20	2.20	2.40	2.40
	yd ³	4.39	4.39	2.88	2.88	3.14	3.14
Width (§)	mm	2927	2994	2927	2994	2927	2994
	ft/in	9'7"	9'9"	9'7"	9'9"	9'7"	9'9"
Dump Clearance at Maximum Lift and 45° Discharge (§)	mm	2935	2815	3070	2944	3027	2902
	ft/in	9'7"	9'2"	10'0"	9'7"	9'11"	9'6"
Reach at Maximum Lift and 45° Discharge (§)	mm	1502	1611	1248	1350	1290	1393
	ft/in	4'11"	5'3"	4'1"	4'5"	4'2"	4'6"
Reach at Level Lift Arm and Bucket Level (§)	mm	3000	3161	2739	2900	2799	2960
	ft/in	9'10"	10'4"	8'11"	9'6"	9'2"	9'8"
Digging Depth (§)	mm	88	88	88	88	88	88
	in	3.5"	3.5"	3.5"	3.5"	3.5"	3.5"
Overall Length	mm	8647	8819	8386	8558	8446	8618
	ft/in	28'5"	29'0"	27'7"	28'1"	27'9"	28'4"
Overall Height with Bucket at Maximum Lift	mm	5928	5928	5634	5634	5697	5697
	ft/in	19'6"	19'6"	18'6"	18'6"	18'9"	18'9"
Loader Clearance Circle with Bucket at Carry Position (§)	mm	13 982	14 157	13 822	13 994	13 858	14 030
	ft/in	45'11"	46'6"	45'5"	45'11"	45'6"	46'1"
Static Tipping Load, Straight (ISO)*	kg	12 849	12 708	13 244	13 108	13 132	12 995
	lb	28,321	28,008	29,190	28,891	28,943	28,641
Static Tipping Load, Straight (Rigid Tire)*	kg	13 594	13 451	13 961	13 824	13 851	13 713
	lb	29,962	29,646	30,771	30,470	30,529	30,225
Static Tipping Load, Articulated (ISO)*	kg	10 959	10 817	11 342	11 207	11 237	11 100
	lb	24,153	23,841	24,999	24,700	24,767	24,465
Static Tipping Load, Articulated (Rigid Tire)*	kg	11 724	11 581	12 082	11 945	11 978	11 840
	lb	25,841	25,526	26,628	26,327	26,401	26,097
Breakout Force** (§)	kN	148	147	182	181	173	172
	lb	33,289	33,053	40,950	40,714	38,931	38,695
Operating Weight*	kg	20 992	21 100	20 732	20 840	20 784	20 892
	lb	46,265	46,503	45,693	45,931	45,807	46,045

* Static tipping loads and operating weights shown are based on a global machine configuration with Michelin 23.5R25 XHA2 L3 Radial tires, full fluids, operator, standard counterweight, standard linkage, cold start, roading fenders, product link, open differential axles (front/rear), power train guard, secondary steering, and sound suppression.

** Measured 102 mm (4") behind tip of cutting edge with bucket hinge pin as pivot point in accordance with SAE J732C.

*** Rock bucket specifications are given on Michelin 23.5R25 XLDD2 L5 Radial tires.

(§) Specifications and ratings conform to all applicable standards recommended by the Society of Automotive Engineers, including SAE Standard J732C governing loader ratings.

(ISO) Full compliance to ISO 14397-1 (2007) Sections 1 thru 6, which requires 2% verification between calculations and testing.

(Rigid Tire) Compliance to ISO 14397-1 (2007) Sections 1 thru 5.

962K Wheel Loader

Operating Specifications

Bucket Type		Material Handling – Fusion QC					
		Bolt-On Edges	Teeth and Segments	Bolt-On Edges	Teeth and Segments	Bolt-On Edges	Teeth and Segments
Capacity – Rated (§)	m ³	3.10	3.10	3.30	3.30	3.40	3.40
	yd ³	4.05	4.05	4.32	4.32	4.45	4.45
Capacity – Struck (§)	m ³	2.61	2.61	2.78	2.78	2.92	2.92
	yd ³	3.41	3.41	3.64	3.64	3.82	3.82
Width (§)	mm	2927	2994	2927	2994	2927	2994
	ft/in	9'7"	9'9"	9'7"	9'9"	9'7"	9'9"
Dump Clearance at Maximum Lift and 45° Discharge (§)	mm	2996	2870	2964	2838	2936	2810
	ft/in	9'9"	9'5"	9'8"	9'3"	9'7"	9'2"
Reach at Maximum Lift and 45° Discharge (§)	mm	1322	1424	1354	1456	1382	1485
	ft/in	4'4"	4'8"	4'5"	4'9"	4'6"	4'10"
Reach at Level Lift Arm and Bucket Level (§)	mm	2844	3005	2889	3050	2929	3090
	ft/in	9'3"	9'10"	9'5"	10'0"	9'7"	10'1"
Digging Depth (§)	mm	88	88	88	88	88	88
	in	3.5"	3.5"	3.5"	3.5"	3.5"	3.5"
Overall Length	mm	8491	8663	8536	8708	8576	8748
	ft/in	27'11"	28'6"	28'1"	28'7"	28'2"	28'9"
Overall Height with Bucket at Maximum Lift	mm	5734	5734	5778	5778	5817	5817
	ft/in	18'10"	18'10"	19'0"	19'0"	19'1"	19'1"
Loader Clearance Circle with Bucket at Carry Position (§)	mm	13 886	14 058	13 913	14 086	13 938	14 112
	ft/in	45'7"	46'2"	45'8"	46'3"	45'9"	46'4"
Static Tipping Load, Straight (ISO)*	kg	13 035	12 897	12 943	12 804	12 867	12 728
	lb	28,729	28,426	28,526	28,221	28,359	28,053
Static Tipping Load, Straight (Rigid Tire)*	kg	13 756	13 617	13 665	13 525	13 591	13 451
	lb	30,318	30,012	30,118	29,810	29,955	29,646
Static Tipping Load, Articulated (ISO)*	kg	11 145	11 008	11 059	10 920	10 987	10 848
	lb	24,565	24,261	24,374	24,069	24,216	23,909
Static Tipping Load, Articulated (Rigid Tire)*	kg	11 888	11 749	11 803	11 663	11 733	11 593
	lb	26,202	25,896	26,014	25,706	25,860	25,551
Breakout Force** (§)	kN	166	165	161	160	156	155
	lb	37,518	37,282	36,201	35,965	35,098	34,862
Operating Weight*	kg	20 833	20 941	20 877	20 985	20 915	21 023
	lb	45,915	46,153	46,012	46,250	46,096	46,334

* Static tipping loads and operating weights shown are based on a global machine configuration with Michelin 23.5R25 XHA2 L3 Radial tires, full fluids, operator, standard counterweight, standard linkage, cold start, roading fenders, product link, open differential axles (front/rear), power train guard, secondary steering, and sound suppression.

** Measured 102 mm (4") behind tip of cutting edge with bucket hinge pin as pivot point in accordance with SAE J732C.

*** Rock bucket specifications are given on Michelin 23.5R25 XLDD2 L5 Radial tires.

(§) Specifications and ratings conform to all applicable standards recommended by the Society of Automotive Engineers, including SAE Standard J732C governing loader ratings.

(ISO) Full compliance to ISO 14397-1 (2007) Sections 1 thru 6, which requires 2% verification between calculations and testing.

(Rigid Tire) Compliance to ISO 14397-1 (2007) Sections 1 thru 5.

962K Wheel Loader

Operating Specifications

Bucket Type		Material Handling – Fusion QC				High Lift Change in Specs
		Bolt-On Edges	Teeth and Segments	Bolt-On Edges	Teeth and Segments	
Edge Type						
Capacity – Rated (§)	m ³	3.60	3.60	3.80	3.80	
	yd ³	4.71	4.71	4.97	4.97	
Capacity – Struck (§)	m ³	3.10	3.10	3.28	3.28	
	yd ³	4.05	4.05	4.29	4.29	
Width (§)	mm	2927	2994	2927	2994	
	ft/in	9'7"	9'9"	9'7"	9'9"	
Dump Clearance at Maximum Lift and 45° Discharge (§)	mm	2904	2778	2868	2742	288
	ft/in	9'6"	9'1"	9'4"	8'11"	0'11"
Reach at Maximum Lift and 45° Discharge (§)	mm	1414	1516	1450	1552	101
	ft/in	4'7"	4'11"	4'9"	5'1"	0'4"
Reach at Level Lift Arm and Bucket Level (§)	mm	2974	3135	3025	3186	277
	ft/in	9'9"	10'3"	9'11"	10'5"	0'10"
Digging Depth (§)	mm	88	88	88	88	5
	in	3.5"	3.5"	3.5"	3.5"	0.2"
Overall Length	mm	8621	8793	8672	8844	443
	ft/in	28'4"	28'11"	28'6"	29'1"	1'6"
Overall Height with Bucket at Maximum Lift	mm	5860	5860	5913	5913	289
	ft/in	19'3"	19'3"	19'5"	19'5"	1'0"
Loader Clearance Circle with Bucket at Carry Position (§)	mm	13 966	14 140	13 998	14 173	308
	ft/in	45'10"	46'5"	46'0"	46'6"	1'1"
Static Tipping Load, Straight (ISO)*	kg	12 779	12 639	12 674	12 533	(652)
	lb	28,166	27,857	27,935	27,624	(1,437)
Static Tipping Load, Straight (Rigid Tire)*	kg	13 504	13 363	13 401	13 259	(748)
	lb	29,764	29,453	29,537	29,223	(1,649)
Static Tipping Load, Articulated (ISO)*	kg	10 905	10 765	10 805	10 665	(635)
	lb	24,034	23,726	23,816	23,505	(1,400)
Static Tipping Load, Articulated (Rigid Tire)*	kg	11 652	11 511	11 554	11 412	(723)
	lb	25,681	25,370	25,466	25,153	(1,594)
Breakout Force** (§)	kN	151	149	145	144	(1)
	lb	33,932	33,696	32,677	32,440	(286)
Operating Weight*	kg	20 955	21 063	21 009	21 117	550
	lb	46,184	46,422	46,303	46,541	1,211

* Static tipping loads and operating weights shown are based on a global machine configuration with Michelin 23.5R25 XHA2 L3 Radial tires, full fluids, operator, standard counterweight, standard linkage, cold start, roading fenders, product link, open differential axles (front/rear), power train guard, secondary steering, and sound suppression.

** Measured 102 mm (4") behind tip of cutting edge with bucket hinge pin as pivot point in accordance with SAE J732C.

*** Rock bucket specifications are given on Michelin 23.5R25 XLDD2 L5 Radial tires.

(§) Specifications and ratings conform to all applicable standards recommended by the Society of Automotive Engineers, including SAE Standard J732C governing loader ratings.

(ISO) Full compliance to ISO 14397-1 (2007) Sections 1 thru 6, which requires 2% verification between calculations and testing.

(Rigid Tire) Compliance to ISO 14397-1 (2007) Sections 1 thru 5.

962K Wheel Loader


Bucket Selection Charts

Material Density		kg/m ³	700	800	900	1000	1100	1200	1300	1400	1500	1600	1700	1800	1900	2000	2100	2200	2300	2400	2500		
Standard Linkage	Pin On	General Purpose	2.70 m ³ (3.53 yd ³)												3.11 m ³ (4.07 yd ³)						2.70 m ³ (3.53 yd ³)		
			2.90 m ³ (3.79 yd ³)												3.34 m ³ (4.37 yd ³)						2.90 m ³ (3.79 yd ³)		
			3.10 m ³ (4.05 yd ³)												3.57 m ³ (4.67 yd ³)						3.10 m ³ (4.05 yd ³)		
			3.30 m ³ (4.32 yd ³)												3.80 m ³ (4.97 yd ³)						3.30 m ³ (4.32 yd ³)		
			3.40 m ³ (4.45 yd ³)												3.91 m ³ (5.11 yd ³)						3.40 m ³ (4.45 yd ³)		
			3.60 m ³ (4.71 yd ³)												4.14 m ³ (5.41 yd ³)						3.60 m ³ (4.71 yd ³)		
			3.80 m ³ (4.97 yd ³)												4.37 m ³ (5.72 yd ³)						3.80 m ³ (4.97 yd ³)		
	Material Handling	2.70 m ³ (3.53 yd ³)														3.11 m ³ (4.07 yd ³)						2.70 m ³ (3.53 yd ³)	
		2.90 m ³ (3.79 yd ³)														3.34 m ³ (4.37 yd ³)						2.90 m ³ (3.79 yd ³)	
		3.10 m ³ (4.05 yd ³)														3.57 m ³ (4.67 yd ³)						3.10 m ³ (4.05 yd ³)	
		3.30 m ³ (4.32 yd ³)														3.80 m ³ (4.97 yd ³)						3.30 m ³ (4.32 yd ³)	
		3.40 m ³ (4.45 yd ³)														3.91 m ³ (5.11 yd ³)						3.40 m ³ (4.45 yd ³)	
		3.60 m ³ (4.71 yd ³)														4.14 m ³ (5.41 yd ³)						3.60 m ³ (4.71 yd ³)	
		3.80 m ³ (4.97 yd ³)														4.37 m ³ (5.72 yd ³)						3.80 m ³ (4.97 yd ³)	
	Heavy Duty Material Handling	3.30 m ³ (4.32 yd ³)														3.80 m ³ (4.97 yd ³)						3.30 m ³ (4.32 yd ³)	
		3.40 m ³ (4.45 yd ³)														3.91 m ³ (5.11 yd ³)						3.40 m ³ (4.45 yd ³)	
		3.60 m ³ (4.71 yd ³)														4.14 m ³ (5.41 yd ³)						3.60 m ³ (4.71 yd ³)	
		3.80 m ³ (4.97 yd ³)														4.37 m ³ (5.72 yd ³)						3.80 m ³ (4.97 yd ³)	
	Fusion QC	General Purpose	2.70 m ³ (3.53 yd ³)													3.11 m ³ (4.07 yd ³)						2.70 m ³ (3.53 yd ³)	
			2.90 m ³ (3.79 yd ³)														3.34 m ³ (4.37 yd ³)						2.90 m ³ (3.79 yd ³)
			3.10 m ³ (4.05 yd ³)														3.57 m ³ (4.67 yd ³)						3.10 m ³ (4.05 yd ³)
			3.30 m ³ (4.32 yd ³)														3.80 m ³ (4.97 yd ³)						3.30 m ³ (4.32 yd ³)
			3.40 m ³ (4.45 yd ³)														3.91 m ³ (5.11 yd ³)						3.40 m ³ (4.45 yd ³)
			3.60 m ³ (4.71 yd ³)														4.14 m ³ (5.41 yd ³)						3.60 m ³ (4.71 yd ³)
3.80 m ³ (4.97 yd ³)																4.37 m ³ (5.72 yd ³)						3.80 m ³ (4.97 yd ³)	
Material Handling		2.70 m ³ (3.53 yd ³)														3.11 m ³ (4.07 yd ³)						2.70 m ³ (3.53 yd ³)	
		2.90 m ³ (3.79 yd ³)														3.34 m ³ (4.37 yd ³)						2.90 m ³ (3.79 yd ³)	
		3.10 m ³ (4.05 yd ³)														3.57 m ³ (4.67 yd ³)						3.10 m ³ (4.05 yd ³)	
		3.30 m ³ (4.32 yd ³)														3.80 m ³ (4.97 yd ³)						3.30 m ³ (4.32 yd ³)	
		3.40 m ³ (4.45 yd ³)														3.91 m ³ (5.11 yd ³)						3.40 m ³ (4.45 yd ³)	
		3.60 m ³ (4.71 yd ³)														4.14 m ³ (5.41 yd ³)						3.60 m ³ (4.71 yd ³)	
		3.80 m ³ (4.97 yd ³)														4.37 m ³ (5.72 yd ³)						3.80 m ³ (4.97 yd ³)	
Material Density		lb/yd ³	1,180	1,348	1,517	1,685	1,854	2,022	2,191	2,359	2,528	2,696	2,865	3,033	3,202	3,370	3,539	3,707	3,876	4,044	4,213		
Bucket Fill Factors		115% 110% 105% 100% 95%																					

Note: All buckets are showing Bolt-On Edges.
Material Handling buckets are flat floor buckets.

962K Wheel Loader

Bucket Selection Charts

Material Density		kg/m ³	700	800	900	1000	1100	1200	1300	1400	1500	1600	1700	1800	1900	2000	2100	2200	2300	2400	2500			
High Lift Linkage	General Purpose	2.70 m ³ (3.53 yd ³)													3.11 m ³ (4.07 yd ³)							2.70 m ³ (3.53 yd ³)		
		2.90 m ³ (3.79 yd ³)												3.34 m ³ (4.37 yd ³)								2.90 m ³ (3.79 yd ³)		
		3.10 m ³ (4.05 yd ³)												3.57 m ³ (4.67 yd ³)								3.10 m ³ (4.05 yd ³)		
		3.30 m ³ (4.32 yd ³)												3.80 m ³ (4.97 yd ³)								3.30 m ³ (4.32 yd ³)		
		3.40 m ³ (4.45 yd ³)												3.91 m ³ (5.11 yd ³)								3.40 m ³ (4.45 yd ³)		
		3.60 m ³ (4.71 yd ³)												4.14 m ³ (5.41 yd ³)								3.60 m ³ (4.71 yd ³)		
		3.80 m ³ (4.97 yd ³)												4.37 m ³ (5.72 yd ³)								3.80 m ³ (4.97 yd ³)		
	Material Handling	2.70 m ³ (3.53 yd ³)														3.11 m ³ (4.07 yd ³)							2.70 m ³ (3.53 yd ³)	
		2.90 m ³ (3.79 yd ³)														3.34 m ³ (4.37 yd ³)							2.90 m ³ (3.79 yd ³)	
		3.10 m ³ (4.05 yd ³)														3.57 m ³ (4.67 yd ³)							3.10 m ³ (4.05 yd ³)	
		3.30 m ³ (4.32 yd ³)														3.80 m ³ (4.97 yd ³)							3.30 m ³ (4.32 yd ³)	
		3.40 m ³ (4.45 yd ³)														3.91 m ³ (5.11 yd ³)							3.40 m ³ (4.45 yd ³)	
		3.60 m ³ (4.71 yd ³)														4.14 m ³ (5.41 yd ³)							3.60 m ³ (4.71 yd ³)	
		3.80 m ³ (4.97 yd ³)														4.37 m ³ (5.72 yd ³)							3.80 m ³ (4.97 yd ³)	
	Heavy Duty Material Handling	3.30 m ³ (4.32 yd ³)														3.80 m ³ (4.97 yd ³)							3.30 m ³ (4.32 yd ³)	
		3.40 m ³ (4.45 yd ³)														3.91 m ³ (5.11 yd ³)							3.40 m ³ (4.45 yd ³)	
		3.60 m ³ (4.71 yd ³)														4.14 m ³ (5.41 yd ³)							3.60 m ³ (4.71 yd ³)	
		3.80 m ³ (4.97 yd ³)														4.37 m ³ (5.72 yd ³)							3.80 m ³ (4.97 yd ³)	
	Fusion OC	General Purpose	2.70 m ³ (3.53 yd ³)													3.11 m ³ (4.07 yd ³)							2.70 m ³ (3.53 yd ³)	
			2.90 m ³ (3.79 yd ³)														3.34 m ³ (4.37 yd ³)							2.90 m ³ (3.79 yd ³)
			3.10 m ³ (4.05 yd ³)														3.57 m ³ (4.67 yd ³)							3.10 m ³ (4.05 yd ³)
			3.30 m ³ (4.32 yd ³)														3.80 m ³ (4.97 yd ³)							3.30 m ³ (4.32 yd ³)
			3.40 m ³ (4.45 yd ³)														3.91 m ³ (5.11 yd ³)							3.40 m ³ (4.45 yd ³)
			3.60 m ³ (4.71 yd ³)														4.14 m ³ (5.41 yd ³)							3.60 m ³ (4.71 yd ³)
3.80 m ³ (4.97 yd ³)																4.37 m ³ (5.72 yd ³)							3.80 m ³ (4.97 yd ³)	
Material Handling		2.70 m ³ (3.53 yd ³)														3.11 m ³ (4.07 yd ³)							2.70 m ³ (3.53 yd ³)	
		2.90 m ³ (3.79 yd ³)														3.34 m ³ (4.37 yd ³)							2.90 m ³ (3.79 yd ³)	
		3.10 m ³ (4.05 yd ³)														3.57 m ³ (4.67 yd ³)							3.10 m ³ (4.05 yd ³)	
		3.30 m ³ (4.32 yd ³)														3.80 m ³ (4.97 yd ³)							3.30 m ³ (4.32 yd ³)	
		3.40 m ³ (4.45 yd ³)														3.91 m ³ (5.11 yd ³)							3.40 m ³ (4.45 yd ³)	
		3.60 m ³ (4.71 yd ³)														4.14 m ³ (5.41 yd ³)							3.60 m ³ (4.71 yd ³)	
		3.80 m ³ (4.97 yd ³)														4.37 m ³ (5.72 yd ³)							3.80 m ³ (4.97 yd ³)	
Material Density	lb/yd ³	1,180	1,348	1,517	1,685	1,854	2,022	2,191	2,359	2,528	2,696	2,865	3,033	3,202	3,370	3,539	3,707	3,876	4,044	4,213				
Bucket Fill Factors		115% 110% 105% 100% 95%																						
																								

Note: All buckets are showing Bolt-On Edges.
Material Handling buckets are flat floor buckets.

962K Wheel Loader

Bucket Fill Factors

(as a % of ISO Rated Capacity)

Loose Material	Performance Series Bucket
Earth/Clay	115
Sand and Gravel	115
Aggregate:	
25-76 mm (1 to 3 in)	110
19 mm (0.75 in) and smaller	105
Rock	100

Note: Fill Factors achieved will also depend on whether the product is washed or not washed.

Change in Specifications

Tires	Width over tires		Change in vertical dimensions		Change in operating weight		Change in static tipping load	
	mm	in	mm	in	kg	lb	kg	lb
23.5R25 RT3B GY L3	2851	112	-2	-0.1"	264	582	146	322
23.5R25 VJT BS E3/L3 Radial	2831	111	-25	-1	184	406	116	256
23.5R25 VMT BS L3 Radial	2861	113	-28	-1.1	200	441	127	180
750/65R25 VLT BS E3/L3 Radial	2974	117	-1	-0.04	744	1,640	471	1,038
23.5R25 XHA2 MX L3 Radial	2820	111	0	0	0	0	0	0
23.5R25 XLDD2 MX L5 Radial	2824	111	28	1.1	608	1,340	385	849
23.5R25 XLD MX L3 Radial	2954	116	-4	-0.2	592	1,305	375	827