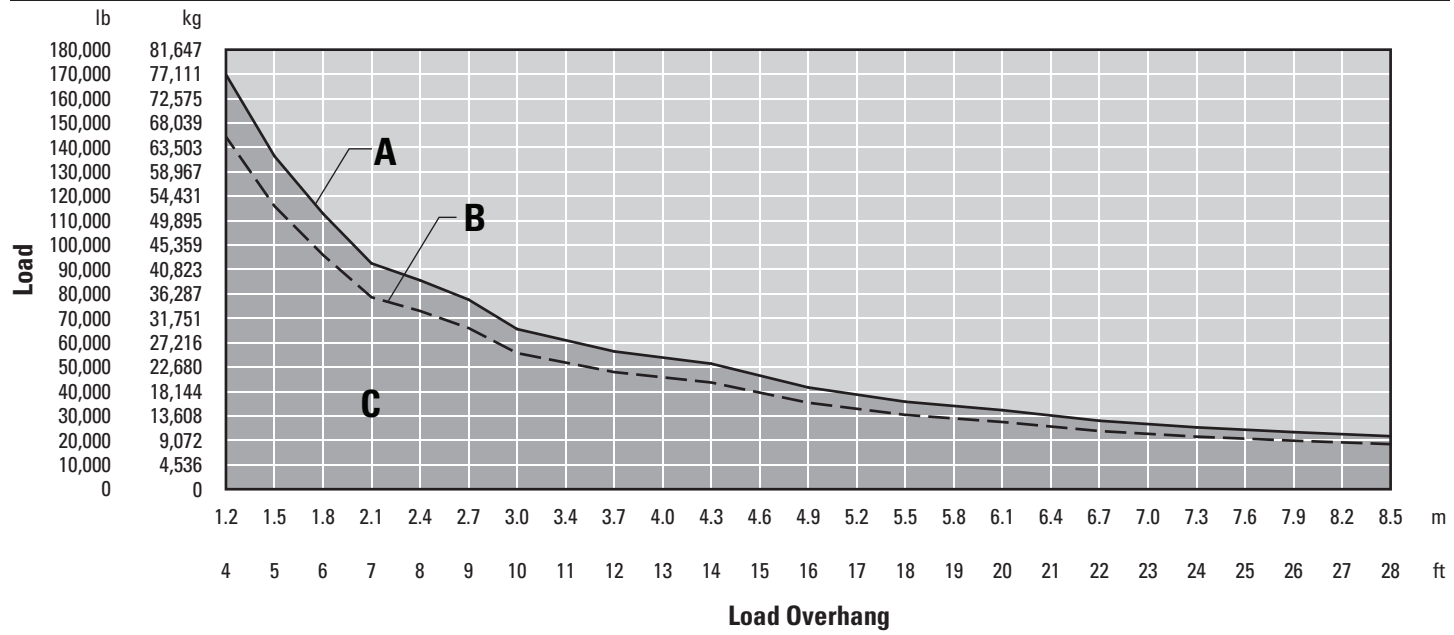


PL83 Pipelayer



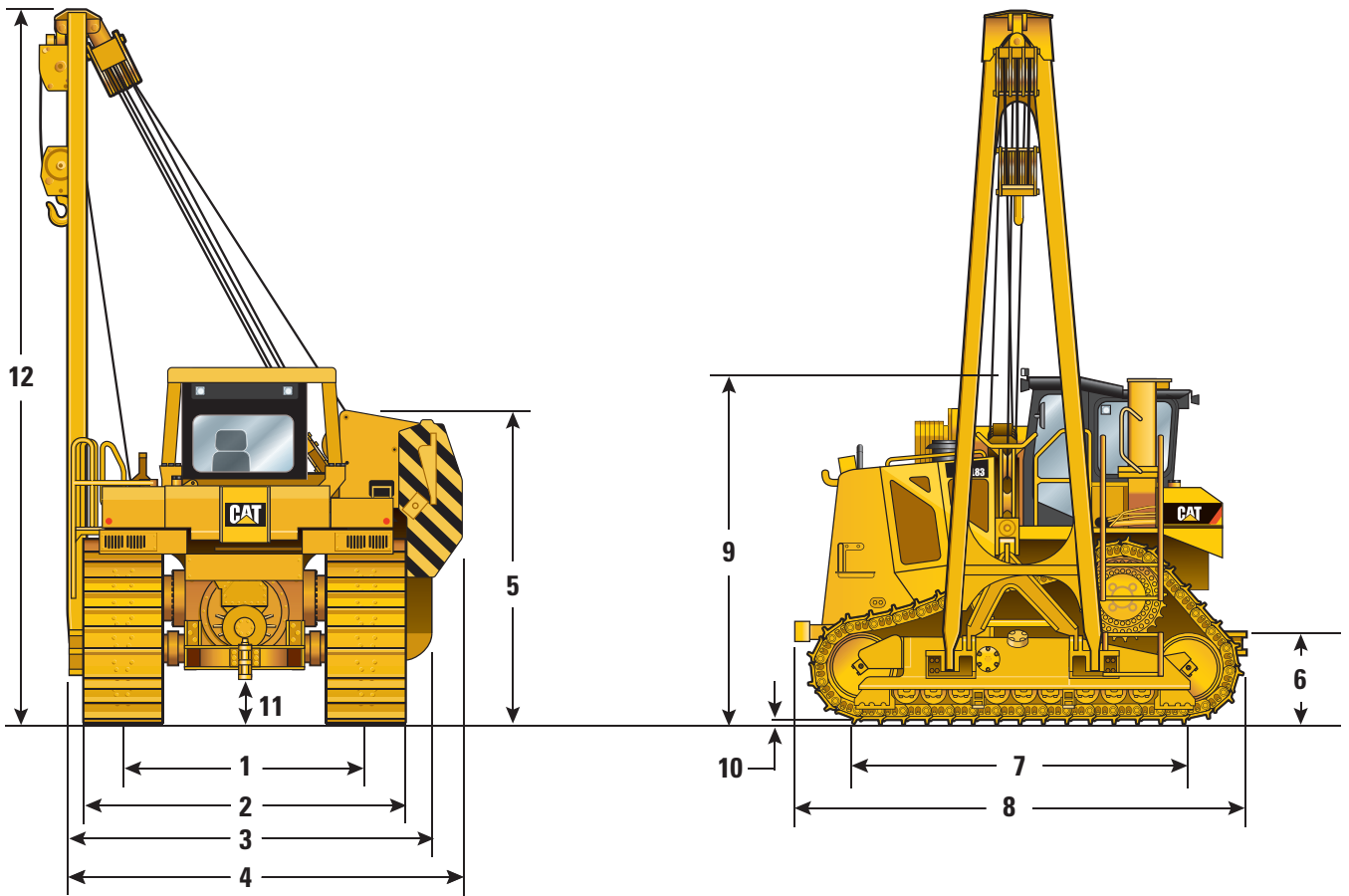
A – Lift capacity at tipping point – ISO 8813 – 72 575 kg (160,000 lb)

B – Rated load capacity – ANSI/ASME B30.14

C – Working range – ANSI/ASME B30.14

PL83 Pipelayer

PL83 Dimensions



1 Track gauge	2.34 m	7 ft 8 in
2 Width of tractor (standard shoes)	3.25 m	10 ft 8 in
3 Width of tractor counterweight/boom removed	3.84 m	12 ft 7 in
4 Width of tractor (counterweight retracted)	4.09 m	13 ft 5 in
5 Machine height (tip of counterweight)	3.51 m	11 ft 6 in
6 Drawbar height	0.43 m	1 ft 5 in
7 Length of track on ground	3.72 m	12 ft 2 in
8 Operating length	5.23 m	17 ft 2 in
9 Height of machine		
Height with ROPS and boom removed	3.15 m	11 ft 2 in
Height to the top of the ROPS canopy/cab	3.73 m	12 ft 3 in
10 Grouser height	0.08 m	3.1 in
11 Ground clearance (per SAE J1234)	0.47 m	1 ft 7 in
12 Boom height [at SAE 1.22 m (4 ft) overhang]	8.02 m	26 ft 4 in