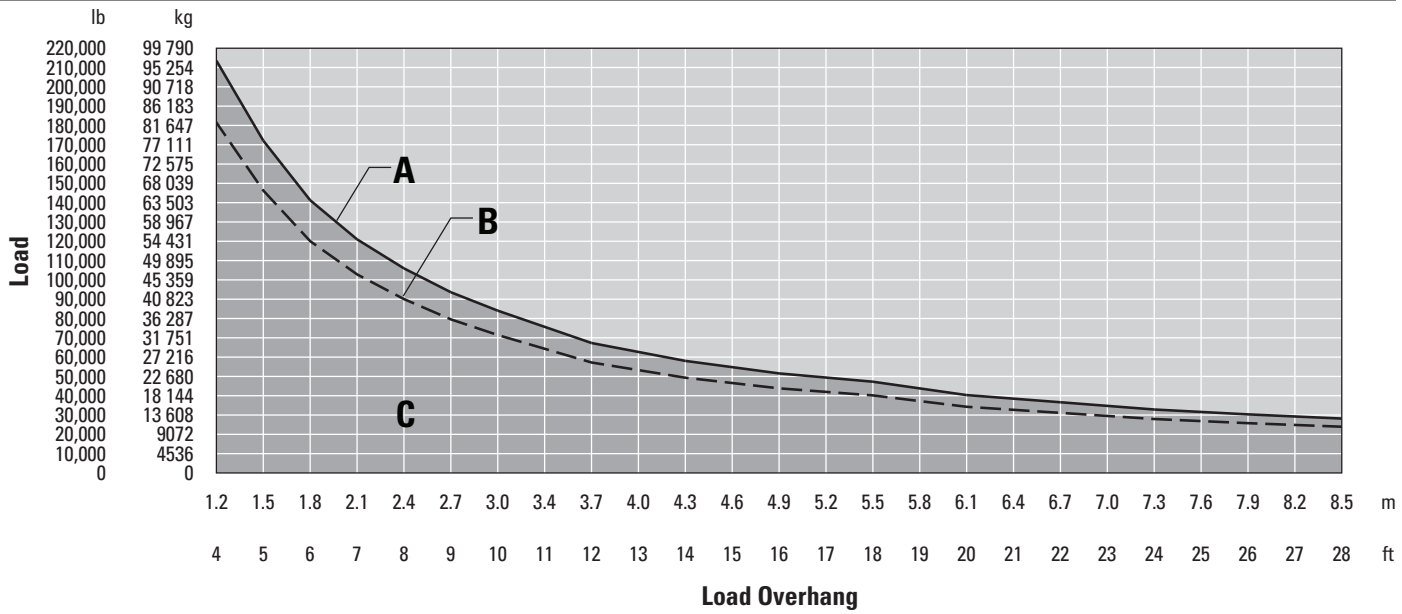


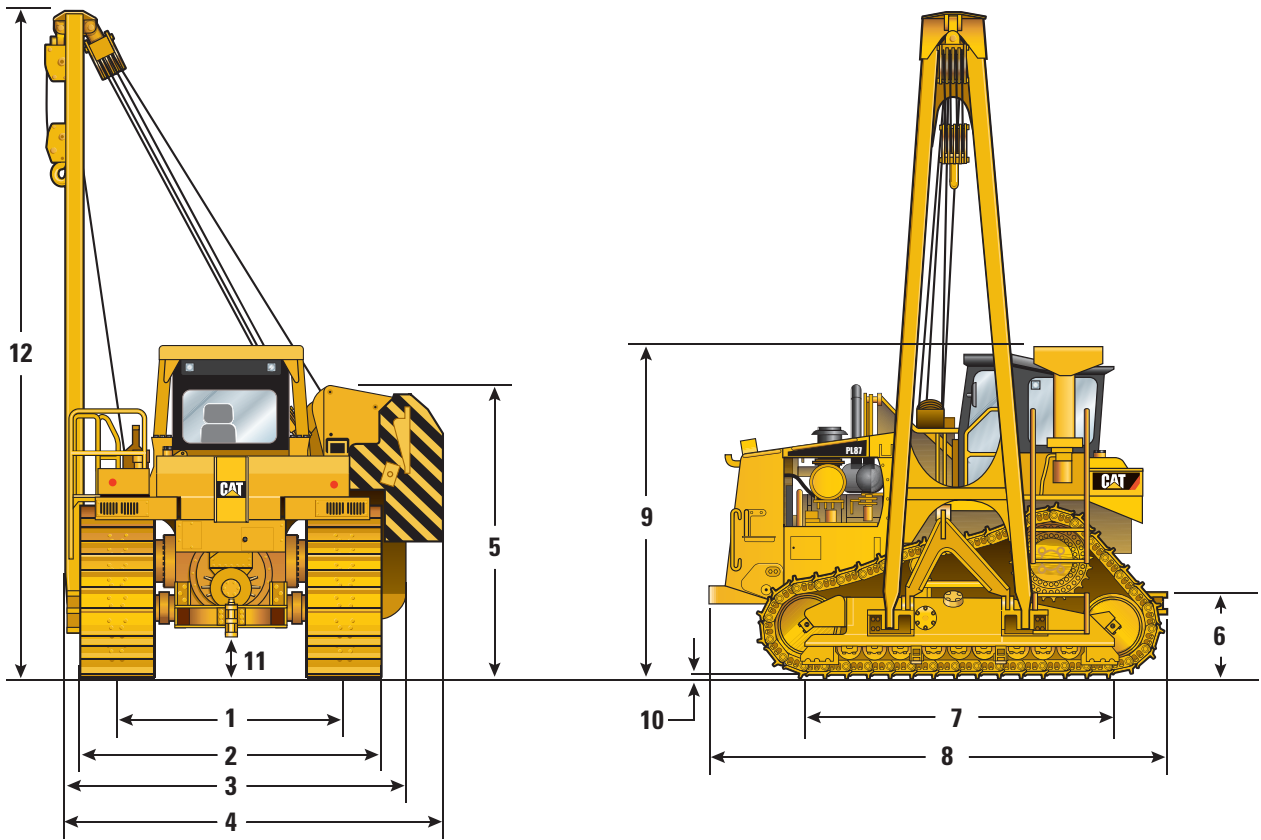
PL87 Pipelayer



- A – Lift capacity at tipping point – ISO 8813 – 97 069 kg (214,000 lb)
- B – Rated load capacity – ANSI/ASME B30.14
- C – Working range – ANSI/ASME B30.14

PL87 Pipelayer

PL87 Dimensions



1 Track gauge	2.54 m	8 ft 4 in
2 Width of tractor (standard shoes)	3.86 m	12 ft 8 in
3 Width of tractor counterweight/boom removed	4.04 m	13 ft 3 in
4 Width of tractor (counterweight retracted)	4.34 m	14 ft 3 in
5 Machine height (tip of counterweight)	3.44 m	11 ft 3.25 in
6 Drawbar height	0.60 m	1 ft 10 in
7 Length of track on ground	3.72 m	12 ft 2 in
8 Operating length	5.49 m	17 ft 11 in
9 Height of machine		
Height with ROPS and boom removed	3.18 m	11 ft 6 in
Height to the top of the ROPS canopy/cab	3.84 m	12 ft 7 in
10 Grouser height	0.09 m	3.6 in
11 Ground clearance (per SAE J1234)	0.46 m	18 in
12 Boom height [at SAE 1.22 m (4 ft) overhang] 8.53 m (28 ft) boom	9.25 m	30 ft 5 in