

906H, 907H, 908H

Compact Wheel Loaders

CATERPILLAR[®]



	906H	907H	908H
Cat [®] engine	C3.4	C3.4	C3.4
Net power (ISO 9249)	51 kW/68 hp	51 kW/68 hp	58 kW/78 hp
Operating weight	5630 kg	5810 kg	6465 kg
Bucket capacity	0.9 m ³	1.0 m ³	1.1 m ³

906H, 907H and 908H Features

High Performance

With its high full turn tipping loads and breakout forces, the H-Series delivers a powerful solution for all customer applications

Ease of Operation

With great visibility to work tools, operating the H-Series CWL couldn't be easier. Simple controls and the ergonomically designed, low effort joysticks reduce fatigue and increase comfort.

Versatile Z-Bar Linkage

The high performance parallel lift, Z-Bar loader linkage is designed for strength and visibility. A choice of skid steer or horizontal pin quick couplers ensures maximum versatility.

Power Train

The standard hydrostatic driveline is a two-speed, 20 km/h transmission. Heavy duty axles are fitted as standard with 100% diff-lock and ride control available as options.

High Flow Work Tools

Standard flow and optional high flow hydraulics with a choice of couplers allows the Caterpillar Compact Wheel Loaders to use a large range of work tools, even those that are commonly associated with Caterpillar Skid Steer Loaders.

Serviceability

The design of the H-Series allows quick and easy servicing. Tilt up engine hood and side service doors give exceptional access to the major components safely from ground level. S•O•S™ oil ports and pressure test points enable easy preventative maintenance.

Contents

H-Series Compact Wheel Loaders	3
Operator Station	4
Z-bar Loader Linkage	5
Couplers	5
Work Tools	6
Power Train	7
Reliability & Durability	8
Serviceability	9
Customer Support	9
Specifications	10
Standard Equipment	14
Optional Equipment	15



The new H-Series Compact Wheel Loaders maintain Caterpillar's strengths whilst boasting a whole new range of features and benefits. In short, a machine that can be trusted to perform.

H-Series Compact Wheel Loaders

A comprehensive range to suit all applications and environments.

906H

This low cab machine provides access to more areas on site and applications allowing for low entry machines. It is designed with simplicity and cost effectiveness in mind while still delivering great all round performance to work in a wide range of applications.

- 0.9 m³ operating capacity
- Low cost rental specification (option)
- Low height over cab
- 18" rim size



907H

With more operating capacity than the 906H and a higher mounted cab, this model can work in applications where clearance is not critical

- 1.0 m³ operating capacity
- Standard height over cab
- 18" rim size



908H

Boasts higher operating capacity, engine horsepower, breakout forces and hydraulic power allowing it to operate in tougher conditions

- 1.1 m³ operating capacity
- Standard height over cab
- 20" rim size





Operator Station

Modern interior, high quality, with an intuitive design.

Excellent Visibility

Visibility to the worksite has been kept to an optimum with two fully glazed doors, front low-level glazing, excellent rear visibility and a clear view to the work tool through the loader arms.

Cab Comfort

Two arm rests and an adjustable wrist rest as standard, intuitively laid out controls, low effort joysticks and steering are some of the features which give maximum operator comfort.

Digital LED Display

All models feature a red backlit machine status cluster, with speedometer, located conveniently within the operator's line of sight.

Multi Function Joystick

Contains Forward-Neutral-Reverse switch, travel speed selector, 3rd Auxiliary hydraulics, diff lock and constant flow controls. A mechanical joystick option is available for the 906H.

Cab Options

With a variety of options it is easy to customize the cab to meet your requirements. A choice of three cab trims and a canopy are available.

Z-Bar Loader Linkage

The ideal linkage for Compact Wheel Loaders

Z-Bar Design

Caterpillar Compact Wheel Loaders make use of the high performance Z-bar loader design which has been optimized for strength, visibility and versatile attachment usage.

The Z-bar linkage gives the operator a clear view to the work tool and excellent dump clearance while maintaining good cycle times and parallel lift.



Couplers

Making the Compact Wheel Loader even more versatile



Horizontal Pin Coupler

This quick coupler will pick up the new range of Caterpillar Compact Wheel Loader work tools. The coupler along with the profiled loader arms have been designed to give maximum visibility to the work tool. A simple joystick function allows for easy engagement and disengagement of the locking pins.

Skid Steer Loader Coupler

The universal skid steer loader coupler allows the use of many Cat Skid Steer Loader work tools. Using either the standard or high flow hydraulic option, this coupler allows the H-Series Compact Wheel Loaders to integrate into a skid steer loader fleet.



Work Tools

A range of buckets, forks and hydraulically powered work tools optimize machine performance.

Wide range of work tools

To maximize machine utilization, Cat work tools are designed to get the best out of the machine and deliver excellent value through high productivity and long life.

The new H-Series Compact Wheel Loaders can now pick up even more work tools with the addition of a choice of couplers.

Work tools for Cat horizontal pin coupler

The Caterpillar Compact Wheel Loader offers a comprehensive range of buckets to suit any environment and specific customer needs. The buckets have been designed and engineered to endure the high breakout forces of the H-Series Compact Wheel Loader. The Caterpillar fork carriage has been designed to increase visibility to the forks, allowing the operator to work much more efficiently and safely, without compromising durability. Various fork tine lengths are available.

Work tools for Cat skid steer loader coupler

This coupler allows the use of Cat Skid Steer Loader work tools. Caterpillar recommends the following options when choosing the Cat Skid Steer Loader coupler:

- Return to dig work tool positioner
- Work tool wiring harness
- Transmission control upgrade
- High flow auxiliary hydraulics for high flow work tools

Auxiliary lines and connectors

The auxiliary lines and connectors are fitted as standard, meaning the Caterpillar Compact Wheel Loader comes ready to work.

For a complete list of available work tools please consult your local Caterpillar dealer.





Power Train

Caterpillar Hystat power train delivers aggressive performance.

Two Speed Options

Caterpillar's hydrostatic driveline has two speed options, 20 km/h or 35 km/h. The 35km/h speeder includes secondary steering. Both options feature smooth inching as standard, with optional travel speed, rimpull control and hand throttle (transmission control upgrade).

Disc Brakes

The 35 km/h speeder version has hydraulically boosted oil immersed disc brakes fitted to both ends of the front axle. The 20 km/h version has a hydraulically actuated dry disc brake, both offering smooth and effective braking. The braking is applied through all four wheels.

Diff Lock

The Caterpillar Compact Wheel Loaders offer 100% diff lock, in both axles as an option throughout the range. Diff lock can be easily engaged on the move to allow travel over poor underfoot conditions.

Chassis Oscillation

Oscillating chassis helps assure four wheel ground contact for optimum traction and stability.

Ride Control

The ride control system further enhances the already smooth road handling of the machine, resulting in increased operator comfort and higher productivity. It is suited for extreme applications where operators need to maintain bucket load material and have a smooth ride. There are three modes available: auto, on and off. Recommended for use with the 35 km/h speeder option.

Reliability and Durability

Quality within, quality throughout.

E-Coat Protection

Caterpillar Compact Wheel Loaders undergo an extensive 24-Stage 'E-Coat' process. Zinc based electroplated undercoat and polyurethane topcoat provides unmatched corrosion resistant properties.

Heavy Duty Axles

The H-Series Compact Wheel Loaders are fitted with heavy duty axles, with outboard planetary reduction gears

Wiring

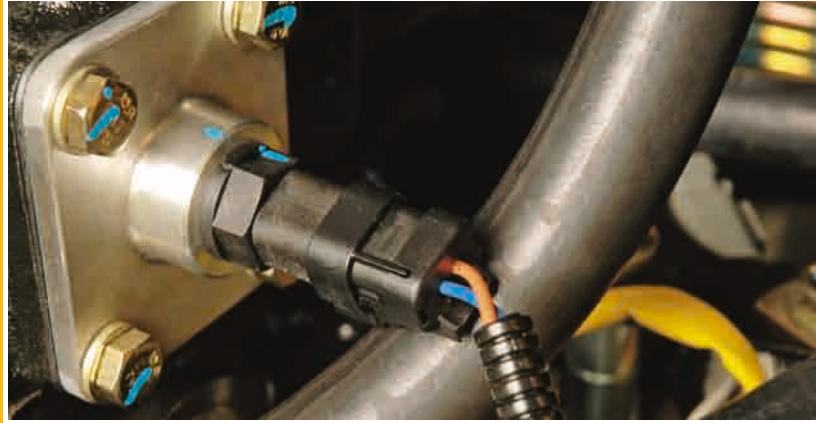
With heavy-duty braided wiring, Caterpillar Compact Wheel Loaders offer great electrical durability. The water resistant sealed connectors prevent dust and moisture interfering with the electrics. Multicoloured and numbered wiring is used for easy component identification.

Durable Design

Durability has been designed into the machine by offering protection to features such as the rear lights, loader arm and coupler greasing points.

Quality Throughout

High quality solid plastics, well-fitted rubber moldings make up the foundation of the H-Series cab. Robust IP67 standard switches are used throughout, ensuring long life of components.



Serviceability

Easy access to service points for routine maintenance.



Conveniently located service points make maintenance easier.

- All routine maintenance points can be accessed safely from ground level
- SOS™ valves for preventative maintenance
- Electronic Technician™ plug in port for advanced diagnostics
- Vertically mounted filters for easy clean servicing
- Colour coded and numbered wiring for easy component identification
- Oil cooler pack can be hinged open for easy cleaning
- A two stage air cleaner including a secondary element and a visual indicator for better service life
- Battery disconnect switch for safe servicing

Customer Support

Unmatched dealer support and complete services provided by the world's largest dealer network.

Your Cat dealer is ready to assist you with your purchase decision and everything after.

- Make comparisons of machines, with estimates of component life, preventative maintenance and cost of production.
- Financing packages are flexible to meet your needs.
- Your Cat dealer can evaluate the cost to repair, rebuild and replace your machine, so you can make the right choice.
- A worldwide computer network enables the dealer parts counter to locate nearly all parts.
- For more information on Cat products, dealer services and industry solutions, visit us at www.cat.com.



906H, 907H and 908H Specifications

Engine

Rated power at 2500 rpm		906H	907H	908H
Cat® C3.4 engine, 4 cylinder, turbocharged, direct injection				
Gross Power	kW/hp	55/74	55/74	62/83
Net Power				
ISO 9249	kW/hp	51/68	51/68	58/78
80/1269/EEC	kW/hp	51/68	51/68	58/78
Bore	mm	94	94	94
Stroke	mm	120	120	120
Displacement	L	3.3	3.3	3.3

- 906H/907H Engine is EU Stage IIIB compliant
- 908H Engine is EU Stage IIIA compliant

Travel Speeds

		906H	907H	908H
Speed 1	km/h	7	7	7
Speed 2	km/h	20	20	20
High Speed	km/h	35	35	35

Sound Levels

Exterior Sound. For European Union compliant machine configurations, the machine labeled spectator sound power level is measured according to the test procedures and conditions specified in 2000/14/EC.

Interior Sound. The dynamic operator sound pressure level is 75dB(A) when “ISO 6396:1992” is used to measure the value for an enclosed cab. The cab was properly installed and maintained. The test was conducted with the cab doors and the cab windows closed.

Maximum Material Densities

Based on ISO 7546:1983, and rated operating loads at full turn.

Bucket Type		General Purpose			Multi Purpose			Light Material		
		906H	907H	908H	906H	907H	908H	906H	907H	908H
Model										
Rated Capacity	m ³	0.90	1.00	1.10	0.75	0.75	0.90	1.20	1.20	1.50
Dump Height										
Horizontal Pin Coupler	mm	2510	2510	2655	2500	2500	2665	2430	2430	2460
SSL Coupler	mm	2395	2395	2540	2470	2470	2630	2285	2285	2345
Maximum Material Density										
Horizontal Pin Coupler	kg/m ³	1889	1706	1658	2184	2202	1967	1271	1310	1106
SSL Coupler	kg/m ³	1755	1584	1549	2131	2149	1929	1208	1218	1034
Bucket Width	mm	1880	2035	2060	1880	1880	2060	2080	2080	2080
Bucket Weights										
Horizontal Pin BOCE	kg	395	413	444	557	557	603	462	462	515
Vertical Pin BOCE	kg	394	412	444	534	537	582	461	461	514

Hydraulic System

		906H	907H	908H
Main Relief	bar	235	235	235
3rd Aux Flow				
Standard	L/min	83	83	83
High Flow	L/min	125	125	125
Hydraulic Cycle Time				
Lift	secs	5	5	5
Lower	secs	4	4	4
Dump	secs	2	2	2
Rack Back	secs	2.5	2.5	2.5

ROPS/FOPS

Caterpillar cab, Rollover Protective Structure (ROPS) and Falling Objects Protective Structure (FOPS)

- ROPS meets the following criteria: ISO 3471-1:1994
- FOPS meets the following criteria: ISO 3449:1992

Service Refill Capacities

		906H	907H	908H
Cooling System	L	24	24	24
Fuel Tank	L	52	78	78
Hydraulic System	L	95	95	95
Engine Oil	L	10	10	10

Operating Specifications

Machine with full fuel tank, ROPS/FOPS cab, 75 kg operator, horizontal pin coupler (HP) or skid steer loader coupler (SSL) and general purpose bucket (GP).

	906H		907H		908H		
	HP	SSL	HP	SSL	HP	SSL	
Coupler Type							
Tyre Size	405/70 R18		405/70 R18		405/0 R20		
Operating weight (ISO 6016:1998)	kg	5630	5630	5810	5810	6465	6465
Rated bucket capacity (ISO 7546:1983)	m ³	0.9	0.9	1.0	1.0	1.1	1.1
Breakout force, bucket (ISO 14397-2:2007)	kN	51	42	51	42	57	47
Rated operating load at full turn, bucket (ISO 14397-1:2007)	kg	1700	1580	1705	1585	1825	1705
Straight tipping load, bucket (ISO 14397-1:2007)	kg	4280	3985	4640	4320	5100	4775
Full turn static tipping load, bucket (ISO 14397-1:2007)	kg	3400	3160	3410	3170	3650	3410
Rackback, transport position		52°	52°	52°	52°	52°	52°
Rated operating load at full turn, forks (EN 474-3:2006, firm and level ground, 1.25 stability and 500 mm load center)	kg	2150	2065	2205	2120	2515	2355
Rated operating load at full turn, forks (firm and level ground, 1.25 stability and 500 mm load center, transport 100 mm above ground)	kg	2740	2720	2810	2785	3080	2990

Cab Features

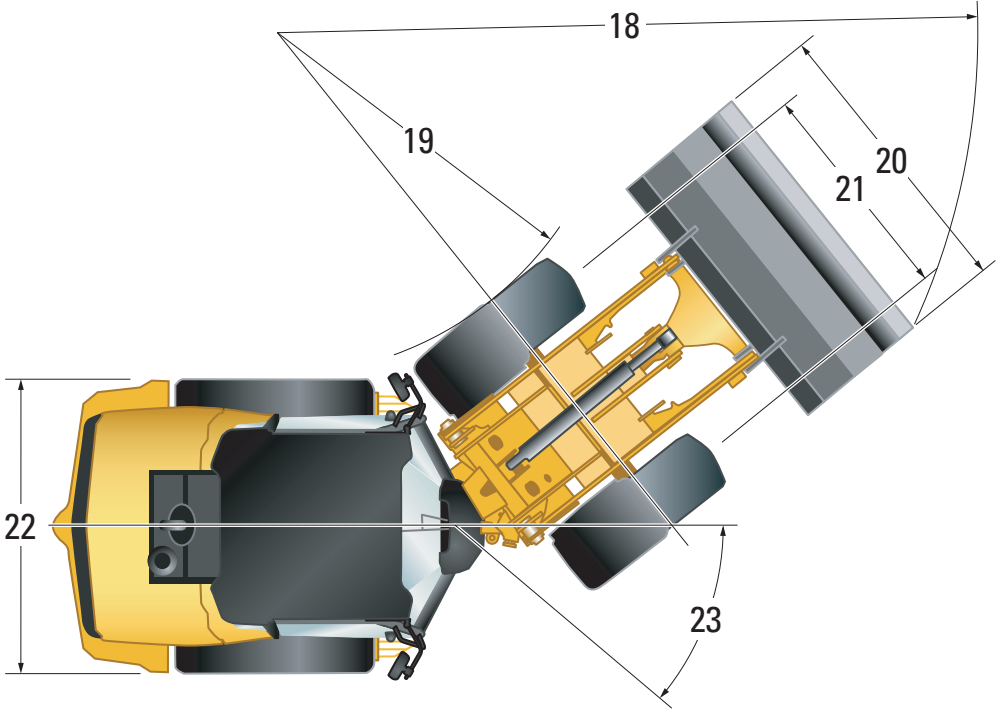
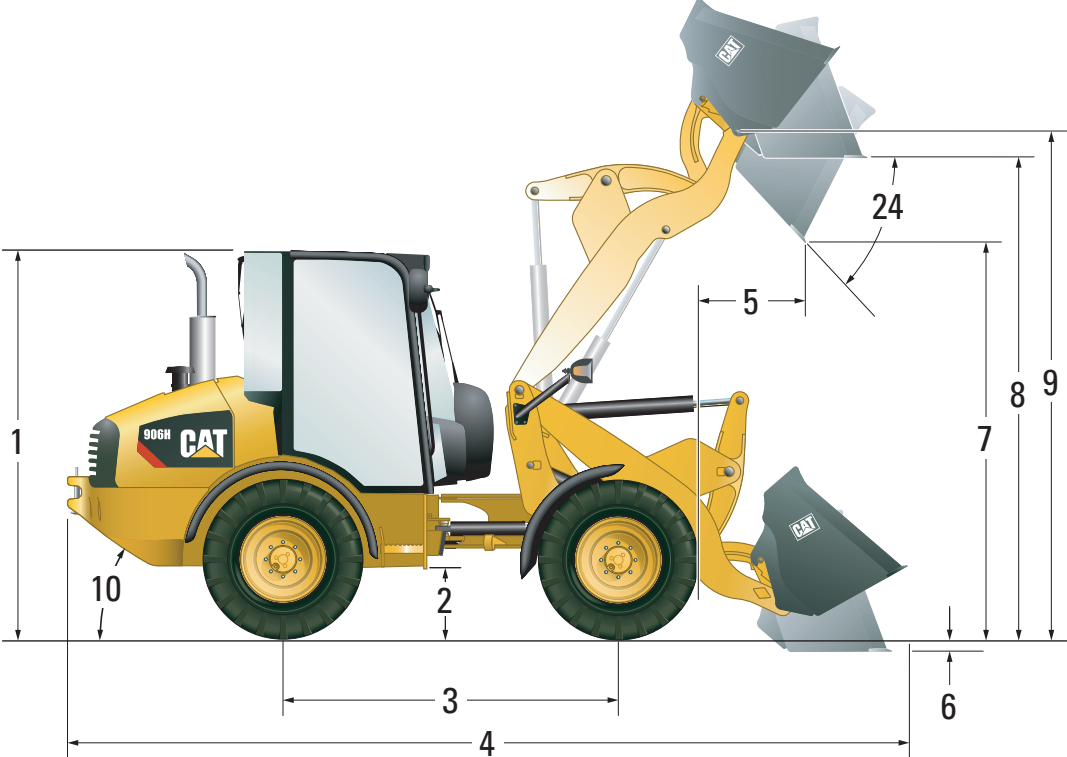
Standard Cab Features	Base Cab*	Comfort Cab	Deluxe Cab	Canopy
Two access doors	•	•	•	
Fixed steering column	•			•
Adjustable steering column		•	•	
Vinyl suspension seat				•
Cloth suspension seat, arm rest	•	•		
Cloth, electric air suspension, arm/head rest, lumbar support and heated back seat			•	
Left window – fixed	•			
Left window – sliding		•	•	
Right window – sliding			•	
Heated rear window	•	•	•	
Coat hook	•	•	•	•
Cabin light	•	•	•	
Sun visor	•	•	•	•
Radio-ready kit (wiring, speaker, aerial and grilles)		•	•	
External knock back mirrors	•	•	•	•
Heater	•	•	•	
Lockable storage box	•	•	•	•
Adjustable internal mirror	•	•	•	•
Optional Cab Features				
Cat radio/CD/MP3/WMA/AUX	•	•	•	
Rear blind	•	•	•	
Heater and air conditioning	•	•	•	
Radio-ready kit (wiring, speaker, aerial and grilles)	•			

* Base cab available only on the 906H

906H, 907H and 908H Specifications

Dimensions

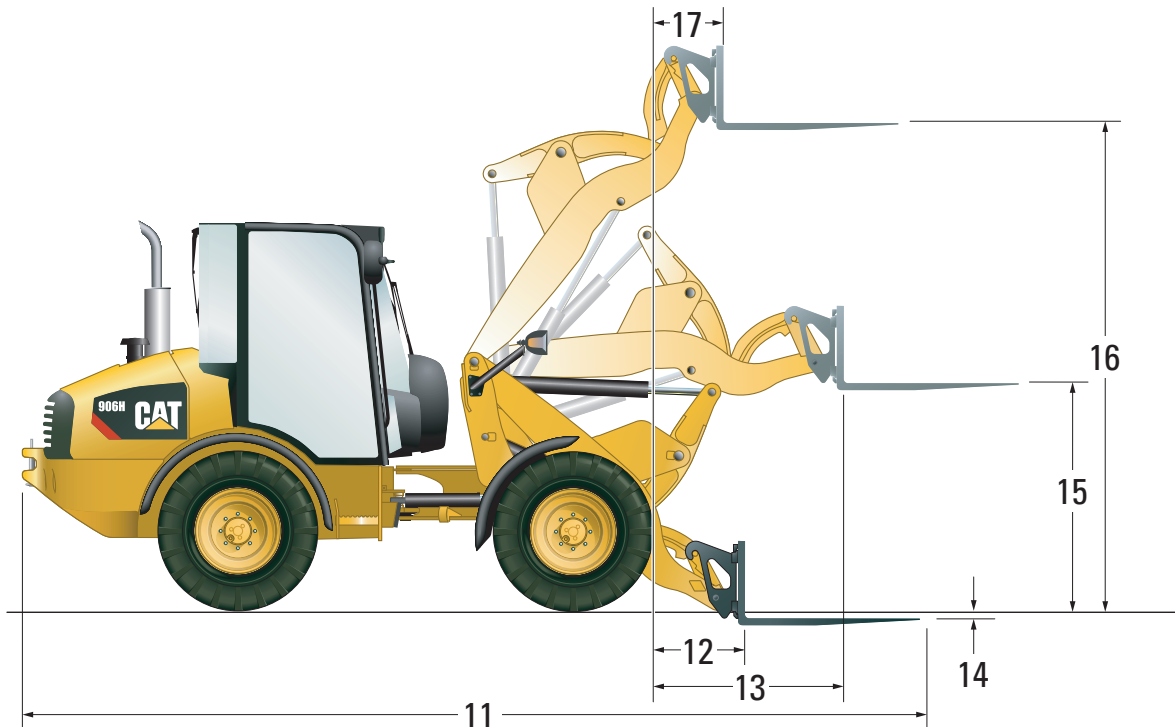
Dimensions shown are based on the machine equipped with general purpose bucket and standard 405/70 SPT9 tires. All dimensions are approximate



Dimensions

Dimensions shown are based on the machine equipped with general purpose bucket and standard 405/70 SPT9 tires. All dimensions are approximate

	With horizontal pin coupler			With SSL coupler		
	906H	907H	908H	906H	907H	908H
	mm	mm	mm	mm	mm	mm
1 Cab Height	2465	2585	2650	2465	2585	2650
2 Ground Clearance	300	300	340	300	300	340
3 Wheelbase	2170	2170	2170	2170	2170	2170
4 Overall Length with Bucket	5435	5435	5595	5585	5585	5760
5 Reach at Max Dump Height	710	710	760	810	810	855
6 Dig Depth	80	80	85	90	90	95
7 Max Dump Height	2510	2510	2655	2395	2395	2540
8 Load Over Height	3035	3035	3225	3025	3025	3215
9 Hinge Pin at Max Height	3230	3230	3410	3230	3230	3410
10 Departure Angle (degrees)	34°	34°	34°	34°	34°	34°
11 Overall Length with Forks	5915	5915	6015	5945	5945	6150
12 Reach at Ground Level	720	720	790	750	750	925
13 Max Reach	1215	1215	1310	1265	1265	1445
14 Fork Depth Below Ground (Above Ground)	25	25	70	(45)	(45)	(30)
15 Fork Height at Max Reach	1425	1425	1450	1490	1490	1525
16 Max Fork Height	3090	3090	3225	3160	3160	3300
17 Fork Reach at Max Height	445	445	460	505	505	595
18 Turning Radius Over Bucket	4400	4475	4510	4445	4515	4560
19 Turning Radius Inside Tire	2240	2240	2080	2240	2240	2080
20 Width Over Bucket	1880	2035	2060	1880	2035	2060
21 Tire Gauge	1420	1420	1570	1420	1420	1570
22 Machine Width	1840	1840	1985	1840	1840	1985
23 Articulation Angle (degrees)	39°	39°	39°	39°	39°	39°
24 Dump Angle at Max Height (degrees)	45°	45°	45°	45°	45°	45°



906H, 907H and 908H Standard Equipment

Standard equipment may vary. Consult your Caterpillar dealer for details

Transmission

Transmission, 20 km/h with heavy duty axles

Transmission inching function

Hydrostatic drive

Loader

Hydraulic horizontal pin quick coupler or skid steer quick coupler

Proportional auxiliary hydraulic circuit

Loader arm float function

Connect under pressure hydraulic quick connector

Parallel lift Z-bar loader

Engine

Cat® C3.4 EU Stage IIIA compliant

Two stage air cleaner with visual indicator

Cat extended life coolant

Lockable engine compartments

Easy quick release fuel filter/water separator

Engine oil drain valve

Closed circuit breather

Electrical

Battery disconnect switch

Heavy duty battery, 12 V

Engine cold starter aid

Alternator 90 A

Service point connector for electronic diagnostics (Electronic Technician™)

General

E-coat paint primer

Pressure test points

Recovery hitch and pin

Scheduled oil sampling S•O•S™ ports

Operator Environment

Radio ready kit inc. speakers (not in base cab)

Two doors

Cup holder

Sun visor

Heated rear window

ROPS & FOPS certified cab

Adjustable wrist rest

Retractable seat belt (2 inch)

Cabin light

Auxiliary power sockets

Coat hook

Pressurized cab

On board digital display cluster

Heater with window, side and feet vents

Sound suppression

Multifunction joystick with direction control

Proportional auxiliary control

Two external knock back mirrors

Warning indicators for major systems

Wiper/washer front & rear

Easy clean cab floor

Lockable storage box

Adjustable internal mirror

906H, 907H and 908H Optional Equipment

Optional equipment may vary. Consult your Caterpillar dealer for details.

Transmission

Transmission control upgrade
100% Differential lock on both axles, selectable on the move
Ride control
Speeder, 35 km/h with secondary steering

Loader

High flow auxiliary hydraulics
Load check valves
Return to dig work tool positioner

Engine

Engine block heater 120 V
Engine oil drain valve (non spill eco drain)

Electrical

Reverse alarm
Machine Security System (MSS)
Magnetic rotating beacon
Work tool wiring harness
Working lights, two front and two rear

General

Custom colour
Rear light guards
Heavy duty coupler guard
Tire options including heavy duty tires

Fluids

Biodegradable hydraulic oil
Cat extended life coolant (-50 °C)

Operator Environment

Air conditioning
Retractable seat belt (3 inch)
Cat radio/CD/MP3/WMA/AUX
ROPS & FOPS certified canopy
Base cab for 906H
Comfort and deluxe cabs
Mechanical joystick (available only for 906H)
Radio ready kit for base cab (wiring, speakers, aerial and grille)
Rear blind

Work Tools

For all work tools and standard/high flow options (consult your Caterpillar dealer)
For a summary of available cab options please refer to page 11.

906H, 907H and 908H Compact Wheel Loaders

For more complete information on Cat products, dealer services, and industry solutions, visit us on the web at www.cat.com

HEHL3619-2 (11/2009) hr

Materials and specifications are subject to change without notice. Featured machines in photos may include additional equipment. See your Caterpillar dealer for available options.

© 2008 Caterpillar -- All rights reserved

CAT, CATERPILLAR, their respective logos, "Caterpillar Yellow" and the POWER EDGE trade dress as well as corporate and product identity used herein, are trademarks of Caterpillar and may not be used without permission.

CATERPILLAR[®]