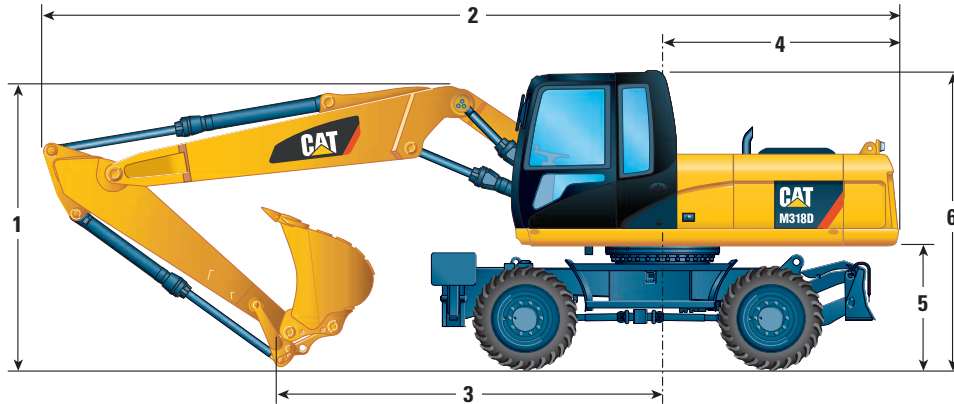


M318D Wheel Excavator

Dimensions

All dimensions are approximate.

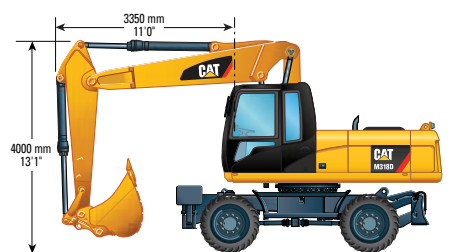
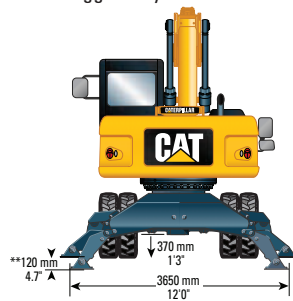


		VA Boom				One-Piece Boom			
		2200 (7'3")	2500 (8'3")	2800 (9'3")	*3300 (10'10")	2200 (7'3")	2500 (8'3")	2800 (9'3")	*3300 (10'10")
Stick Length	mm (ft/in)	2200 (7'3")	2500 (8'3")	2800 (9'3")	*3300 (10'10")	2200 (7'3")	2500 (8'3")	2800 (9'3")	*3300 (10'10")
1 Shipping Height	mm (ft/in)	3170 (10'5")	3170 (10'5")	3300 (10'10")	3330 (10'11")	3190 (10'6")	3210 (10'6")	3330 (10'11")	3290 (10'10")
2 Shipping Length	mm (ft/in)	8870 (29'1")	8550 (28'6")	8820 (28'11")	8850 (29'0")	8870 (29'1")	8960 (29'5")	8950 (29'4")	9000 (29'6")
3 Support Point	mm (ft/in)	3920 (12'10")	3650 (12'0")	3510 (11'6")	3270 (10'9")	3810 (12'6")	3490 (11'5")	3310 (10'10")	3080 (10'1")
4 Tail Swing Radius	mm (ft/in)	2565 (8'5")				2565 (8'5")			
5 Counterweight Clearance	mm (ft/in)	1275 (4'2")				1275 (4'2")			
6 Cab Height	mm (ft/in)	3170 (10'5")				3170 (10'5")			
With 1200 mm (4 ft) Fixed Cab Riser	mm (ft/in)	4370 (14'4")				4370 (14'4")			
Overall Machine Width	mm (ft/in)	2550 (8'4")				2550 (8'4")			
Wide Gauge Axle	mm (ft/in)	2750 (9'0")				2750 (9'0")			

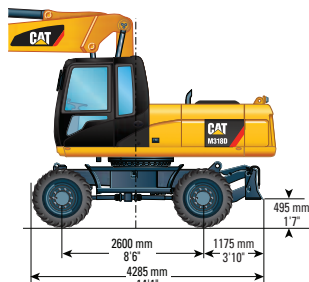
* Industrial stick

** Maximum tire clearance with outrigger fully down

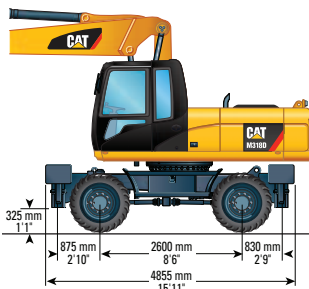
Roading position with 2400 mm stick



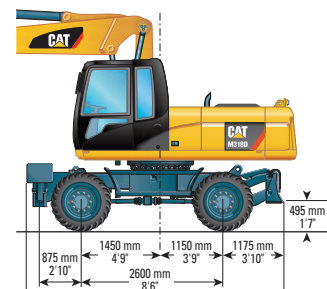
Undercarriage with dozer only



Undercarriage with 2 sets of outriggers

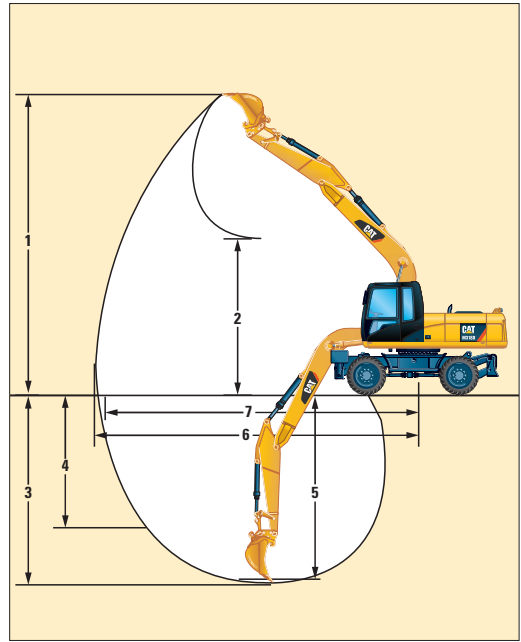
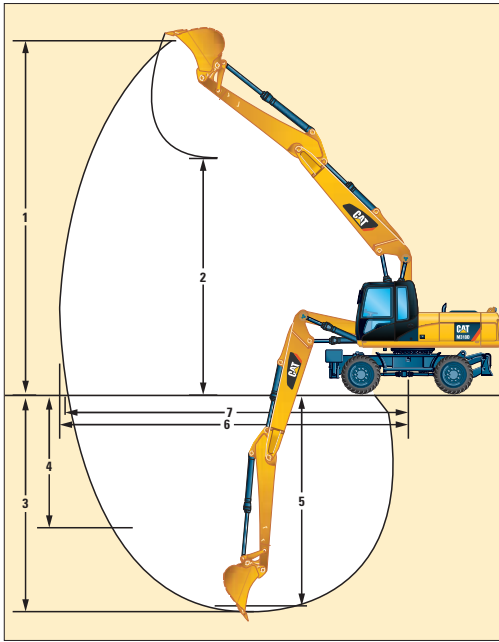


Undercarriage with 1 set of outriggers and dozer



M318D Wheel Excavator

Working Ranges



		VA Boom				One-Piece Boom			
		2200 (7'3")	2500 (8'3")	2800 (9'3")	*3300 (10'10")	2200 (7'3")	2500 (8'3")	2800 (9'3")	*3300 (10'10")
Stick Length	mm (ft/in)								
1 Digging Height	mm (ft/in)	9710 (31'11")	10 000 (32'10")	10 210 (33'6")	8620 (28'3")	8760 (28'9")	9010 (29'7")	9170 (30'1")	7560 (24'10")
2 Dump Height	mm (ft/in)	6700 (22'0")	6970 (22'11")	7190 (23'7")	3550 (12'4")	5900 (19'4")	6110 (20'1")	6270 (20'7")	3140 (10'4")
3 Digging Depth	mm (ft/in)	5750 (18'11")	6060 (19'11")	6360 (20'11")	5320 (17'6")	5700 (18'9")	6000 (19'8")	6300 (20'7")	5250 (17'3")
4 Vertical Wall Digging Depth	mm (ft/in)	3220 (10'7")	3680 (12'1")	3960 (13'0")	–	2880 (9'5")	3340 (11'0")	3620 (11'11")	–
5 Depth 2.5 m (8'3") Straight Clean-Up	mm (ft/in)	5538 (18'2")	5865 (19'3")	6179 (20'4")	–	5488 (18'0")	5805 (19'1")	6119 (20'1")	–
6 Reach	mm (ft/in)	9160 (30'1")	9470 (31'1")	9760 (32'1")	8490 (27'11")	9180 (30'2")	9490 (31'2")	9770 (32'1")	8470 (27'10")
7 Reach at Ground Level	mm (ft/in)	8970 (29'6")	9300 (30'7")	9590 (31'6")	8290 (27'3")	9000 (29'7")	9320 (30'7")	9600 (31'6")	8270 (27'2")
Bucket Forces (ISO 6015)	kN (lbf)	126 (28,326)	126 (28,326)	126 (28,326)	–	126 (28,326)	126 (28,326)	126 (28,326)	–
Stick Forces (ISO 6015)	kN (lbf)	102 (22,931)	91 (20,458)	85 (19,109)	–	102 (22,931)	91 (20,458)	85 (19,109)	–

* Industrial stick has no bucket linkage. All dimensions refer to sticknose.

Values 1-7 are calculated with bucket and quick coupler with a tip radius of 1599 mm (5'3").

Breakout force values are calculated with heavy lift on (no quick coupler) and a tip radius of 1405 mm (4'7").





M318D Wheel Excavator

Bucket Specifications

Contact your Cat dealer for special bucket requirements.

Pin-On Buckets								Variable Adjustable Boom 5260 mm (17'3")														
								2200 mm (7'3")				2500 mm (8'3")				2800 mm (9'3")						
Stick Length								Free on wheels	Dozer lowered	1 set of stabilizer lowered	Fully stabilized	Free on wheels	Dozer lowered	1 set of stabilizer lowered	Fully stabilized	Free on wheels	Dozer lowered	1 set of stabilizer lowered	Fully stabilized			
Width		Weight*		Capacity (ISO)		Adapters																
								mm	in	kg	lb	m ³	yd ³									
Excavation	600	24	478	1,054	0.38	0.50	3															
	750	30	507	1,118	0.52	0.68	3															
	900	35	568	1,252	0.65	0.85	4															
	1000	39	602	1,327	0.75	0.98	4															
	1100	43	634	1,398	0.84	1.10	4															
	1200	47	678	1,495	0.94	1.23	5															
	1300	51	710	1,566	1.03	1.35	5															
	1400	55	744	1,641	1.13	1.48	5															
Extreme Excavation	1200	47	712	1,570	0.94	1.23	5															
	1300	51	745	1,643	1.03	1.35	5															
Excavation (leveling)	600	24	514	1,133	0.41	0.54	3															
	750	30	544	1,200	0.56	0.73	3															
	800	31	582	1,283	0.61	0.80	4															
	900	35	611	1,347	0.70	0.92	4															
	1000	39	651	1,435	0.82	1.07	4															
	1100	43	687	1,515	0.92	1.20	4															
	1200	47	740	1,632	1.04	1.36	5															
	1300	51	777	1,713	1.14	1.49	5															
	1400	55	813	1,793	1.26	1.65	5															
Extreme Excavation (leveling)	1200	47	772	1,702	1.04	1.36	5															
	1300	51	809	1,784	1.14	1.49	5															
Ditch Cleaning	1800	71	630	1,389	0.90	1.18																
	2000	79	685	1,510	1.00	1.31																
Tiltable Ditch Cleaning	1800	71	875	1,929	0.75	0.98																
	2000	79	912	2,011	0.84	1.10																

* Bucket weight includes Ground Engaging Tools

	Maximum material density 1800 kg/m ³ (3,000 lb/yd ³)		Maximum material density 1200 kg/m ³ (2,000 lb/yd ³)
	Maximum material density 1500 kg/m ³ (2,500 lb/yd ³)		Not recommended

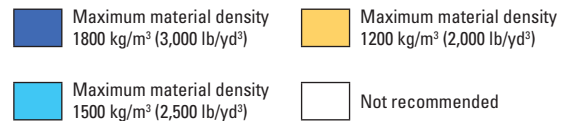
M318D Wheel Excavator

Bucket Specifications

Contact your Cat dealer for special bucket requirements.

Pin-On Buckets								One-Piece Boom 5350 mm (17'7")											
								2200 mm (7'3")				2500 mm (8'3")				2800 mm (9'3")			
Stick Length								Free on wheels	Dozer lowered	1 set of stabilizer lowered	Fully stabilized	Free on wheels	Dozer lowered	1 set of stabilizer lowered	Fully stabilized	Free on wheels	Dozer lowered	1 set of stabilizer lowered	Fully stabilized
	Width		Weight*		Capacity (ISO)		Adapters												
	mm	in	kg	lb	m ³	yd ³													
Excavation	600	24	478	1,054	0.38	0.50	3												
	750	30	507	1,118	0.52	0.68	3												
	900	35	568	1,252	0.65	0.85	4												
	1000	39	602	1,327	0.75	0.98	4												
	1100	43	634	1,398	0.84	1.10	4												
	1200	47	678	1,495	0.94	1.23	5												
	1300	51	710	1,566	1.03	1.35	5												
	1400	55	744	1,641	1.13	1.48	5												
Extreme Excavation	1200	47	712	1,570	0.94	1.23	5												
	1300	51	745	1,643	1.03	1.35	5												
Excavation (leveling)	600	24	514	1,133	0.41	0.54	3												
	750	30	544	1,200	0.56	0.73	3												
	800	31	582	1,283	0.61	0.80	4												
	900	35	611	1,347	0.70	0.92	4												
	1000	39	651	1,435	0.82	1.07	4												
	1100	43	687	1,515	0.92	1.20	4												
	1200	47	740	1,632	1.04	1.36	5												
	1300	51	777	1,713	1.14	1.49	5												
	1400	55	813	1,793	1.26	1.65	5												
Extreme Excavation (leveling)	1200	47	772	1,702	1.04	1.36	5												
	1300	51	809	1,784	1.14	1.49	5												
Ditch Cleaning	1800	71	630	1,389	0.90	1.18													
	2000	79	685	1,510	1.00	1.31													
Tiltable Ditch Cleaning	1800	71	875	1,929	0.75	0.98													
	2000	79	912	2,011	0.84	1.10													

* Bucket weight includes Ground Engaging Tools



M318D Wheel Excavator

Work Tools Matching Guide

When choosing between various work tool models that can be installed onto the same machine configuration, consider work tool application, productivity requirements, and durability. Refer to work tool specifications for application recommendations and productivity information.

Without Quick Coupler			Variable Adjustable Boom 5260 mm (17'3")												One-Piece Boom 5350 mm (17'7")																
			Dozer lowered				2 sets of stabilizers lowered				Dozer and stabilizer lowered				Dozer lowered				2 sets of stabilizers lowered				Dozer and stabilizer lowered								
			2200	2500	2800	3300	2200	2500	2800	3300	2200	2500	2800	3300	2200	2500	2800	3300	2200	2500	2800	3300	2200	2500	2800	3300	2200	2500	2800	3300	
			7'3"	8'3"	9'3"	10'10"	7'3"	8'3"	9'3"	10'10"	7'3"	8'3"	9'3"	10'10"	7'3"	8'3"	9'3"	10'10"	7'3"	8'3"	9'3"	10'10"	7'3"	8'3"	9'3"	10'10"	7'3"	8'3"	9'3"	10'10"	
Hammers	H115 S, H120C S, H130 S		[Green]																												
Multiprocessors	MP15	CC, CR	[Green]																												
	MP15	PP, PS	[Green]																												
	MP15	S	[Green]																												
	MP20	CC, CR	[Green]																												
	MP20	PP, PS, S	[Green]																												
Hydraulic Shears (* boom mounted)	S320B		[Green]																												
	S320B*		[Green]																												
	S325B*		[Green]																												
Compactor	CVP75		[Green]																												
GSH15B 4 tines	400 L (0.53 yd³)		[Blue]																												
	500 L (0.66 yd³)		[Blue]																												
	600 L (0.79 yd³)		[Blue]																												
	800 L (1.05 yd³)		[Blue]																												
	GSH20B 4 tines	600 L (0.79 yd³)		[Blue]																											
		800 L (1.05 yd³)		[Blue]																											
		1000 L (1.3 yd³)		[Blue]																											

[Green] 360° Working Range
 [Red] Over the front only

[Dark Blue] Maximum material density 3000 kg/m³ (5,000 lb/yd³)
 [Light Blue] Maximum material density 1800 kg/m³ (3,000 lb/yd³)
 [Yellow] Maximum material density 1200 kg/m³ (2,000 lb/yd³)

M318D Wheel Excavator

Lift Capacities – Variable Adjustable Boom (5260 mm [17'3"])

All values are without bucket and without QC, with counterweight (4000 kg [8,810 lb]), heavy lift on.



Load at maximum reach (sticknose/bucket pin)



Load over front



Load over rear

Load over side



Load point height

Short Stick
2200 mm
(7'3")

Stick length	Undercarriage configuration	3.0 m			4.5 m			6.0 m			7.5 m			m		
		Load over front	Load over rear	Load over side	Load over front	Load over rear	Load over side	Load over front	Load over rear	Load over side	Load over front	Load over rear	Load over side	Load over front	Load over rear	Load over side
6.0 m	Rear dozer up	kg			*6700	5800	5050	5050	3600	3150				*4350	3300	2900
	Rear dozer down	kg				*6700	5750		*5750	3600					*4350	3300
	Dozer and stabilizer down	kg				*6700	6700		*5750	5300					*4350	4350
	2 sets of stabilizers down	kg			*6700	6700		*5750	5300						*4350	4350
	Wide axle rear dozer up	kg				5800	5500		3600	3450					3350	3200
4.5 m	Rear dozer up	kg			*7650	5500	4800	4950	3500	3050				3800	2650	2300
	Rear dozer down	kg				*7650	5500		*6350	3500					*4150	2650
	Dozer and stabilizer down	kg				*7650	7650		*6350	5200					*4150	3950
	2 sets of stabilizers down	kg			*7650	7650		*6350	6050						*4150	4150
	Wide axle rear dozer up	kg				5550	5250		3500	3350					2650	2550
3.0 m	Rear dozer up	kg			7400	5050	4350	4800	3350	2900				3400	2350	2050
	Rear dozer down	kg				*9100	5050		*6900	3350					*4200	2350
	Dozer and stabilizer down	kg				*9100	7800		*6900	5000					*4200	3550
	2 sets of stabilizers down	kg			*9100	9100		*6900	5850						*4200	4100
	Wide axle rear dozer up	kg				5100	4800		3350	3200					2350	2250
1.5 m	Rear dozer up	kg			6950	4700	4000	4600	3150	2700	3300	2300	2000	3250	2250	1950
	Rear dozer down	kg				*10 150	4650		7150	3150					*4500	2250
	Dozer and stabilizer down	kg				*10 150	7350		7250	4800					*4500	3400
	2 sets of stabilizers down	kg			*10 150	8750		*7400	5650		*5600	5150	3500		*4500	3950
	Wide axle rear dozer up	kg				4700	4400		3150	3000					2250	2150
0.0 m	Rear dozer up	kg			6750	4500	3800	4450	3050	2600				3350	2300	2000
	Rear dozer down	kg				*10 150	4450		7000	3050					*5050	2300
	Dozer and stabilizer down	kg				*10 150	7150		7100	4700					*5050	3500
	2 sets of stabilizers down	kg			*10 150	8500		*7450	7250	5500					*5050	4100
	Wide axle rear dozer up	kg				4500	4250		3050	2900					2300	2200
-1.5 m	Rear dozer up	kg	*10 300	8500	6950	4450	3800	4450	3000	2600				3750	2550	2250
	Rear dozer down	kg		*10 300	8350		*9200	4450		*6800	3000				*5550	2550
	Dozer and stabilizer down	kg		*10 300	8300		*9200	7100		*6800	4650				*5550	3950
	2 sets of stabilizers down	kg		*10 300	8300		*9200	8500		*6800	5450				*5550	4600
	Wide axle rear dozer up	kg	*10 300	8500	7850		4500	4200		3000	2850				2550	2450
-3.0 m	Rear dozer up	kg			6850	4600	3900							4750	3250	2800
	Rear dozer down	kg				*7200	4550								*5000	3250
	Dozer and stabilizer down	kg				*7200	7200								*5000	5000
	2 sets of stabilizers down	kg			*7200	7200									*5000	5000
	Wide axle rear dozer up	kg				4600	4300								3250	3100

Short Stick
2200 mm
(7'3")

Stick length	Undercarriage configuration	10.0 ft			15.0 ft			20.0 ft			25.0 ft			ft		
		Load over front	Load over rear	Load over side	Load over front	Load over rear	Load over side	Load over front	Load over rear	Load over side	Load over front	Load over rear	Load over side	Load over front	Load over rear	Load over side
20.0 ft	Rear dozer up	lb			*14,600	12,500	10,900	10,800	7,700	6,700				*9,600	7,500	6,500
	Rear dozer down	lb				*14,600	12,400		*10,900	7,700					*9,600	7,500
	Dozer and stabilizer down	lb				*14,600	14,600		*10,900	*10,900					*9,600	*9,600
	2 sets of stabilizers down	lb			*14,600	14,600		*10,900	*10,900	*10,900					*9,600	*9,600
	Wide axle rear dozer up	lb				12,500	11,900		7,700	7,300					7,500	7,100
15.0 ft	Rear dozer up	lb			*16,500	11,900	10,300	10,700	7,600	6,600				8,400	5,900	5,100
	Rear dozer down	lb				*16,500	11,800		*13,900	7,600					*9,200	5,900
	Dozer and stabilizer down	lb				*16,500	16,500		*13,900	11,200					*9,200	8,800
	2 sets of stabilizers down	lb			*16,500	16,500		*13,900	13,000						*9,200	*9,200
	Wide axle rear dozer up	lb				11,900	11,300		7,600	7,200					5,900	5,700
10.0 ft	Rear dozer up	lb			15,900	10,900	9,400	10,300	7,200	6,300				7,500	5,200	4,500
	Rear dozer down	lb				*19,600	10,900		*15,000	7,200					*9,300	5,200
	Dozer and stabilizer down	lb				*19,600	16,800		*15,000	10,800					*9,300	7,900
	2 sets of stabilizers down	lb			*19,600	19,600		*15,000	12,600						*9,300	9,100
	Wide axle rear dozer up	lb				11,000	10,400		7,200	6,900					5,200	5,000
5.0 ft	Rear dozer up	lb			15,000	10,100	8,600	9,900	6,800	5,900				7,200	4,900	4,300
	Rear dozer down	lb				*21,900	10,000		15,400	6,800					*9,900	5,000
	Dozer and stabilizer down	lb				*21,900	15,800		15,600	10,400					*9,900	7,500
	2 sets of stabilizers down	lb			*21,900	18,800		*16,000	15,900	12,100					*9,900	8,800
	Wide axle rear dozer up	lb				10,100	9,600		6,800	6,500					5,000	4,700
0.0 ft	Rear dozer up	lb			14,600	9,700	8,200	9,600	6,600	5,600				7,400	5,100	4,400
	Rear dozer down	lb				*22,000	9,600		15,000	6,500					*11,100	5,100
	Dozer and stabilizer down	lb				*22,000	15,400		15,300	10,100					*11,100	7,800
	2 sets of stabilizers down	lb			*22,000	22,000		*16,100	15,600	11,800					*11,100	9,000
	Wide axle rear dozer up	lb				9,700	9,200		6,600	6,200					5,100	4,800
-5.0 ft	Rear dozer up	lb	*23,500	18,200	14,900	14,500	9,600	8,200	9,600	6,500	5,600			8,300	5,700	4,900
	Rear dozer down	lb		*23,500	17,900		*20,000	9,600		*14,600	6,500				*12,200	5,700
	Dozer and stabilizer down	lb		*23,500	23,500		*20,000	15,300		*14,600	10,100				*12,200	8,700
	2 sets of stabilizers down	lb	*23,500	23,500	23,500	*20,000	20,000		18,200		*14,600	11,800			*12,200	10,100
	Wide axle rear dozer up	lb		18,200	16,800		9,700	9,100		6,500	6,200				5,700	5,400
-10.0 ft	Rear dozer up	lb			14,800	9,900	8,400							10,600	7,300	6,200
	Rear dozer down	lb				*15,400	9,800								*11,000	7,200
	Dozer and stabilizer down	lb				*15,400	15,400								*11,000	*11,000
	2 sets of stabilizers down	lb			*15,400	15,400									*11,000	*11,000
	Wide axle rear dozer up	lb				9,900	9,300								7,300	6,900

*Limited by hydraulic rather than tipping load.

Lift capacity ratings are based on ISO 10567:2007, they do not exceed 87% of hydraulic lifting capacity or 75% of tipping load. The load point is the center line of the bucket pivot mounting pin on the stick. The oscillating axle must be locked. Lifting capacities are based on the machine standing on a firm uniform supporting surface and the Variable Boom Cylinder adjusted to the maximum length. For lifting capacity including bucket and/or quick coupler, the respective weight has to be subtracted from above values. The use of a work tool attachment point to handle/lift objects, could affect the machine lift performance.

Always refer to the appropriate Operation and Maintenance Manual for specific product information.

M318D Wheel Excavator

Lift Capacities – Variable Adjustable Boom (5260 mm [17'3"])

All values are without bucket and without QC, with counterweight (4000 kg [8,810 lb]), heavy lift on.



Load at maximum reach (sticknose/bucket pin)



Load over front



Load over rear



Load over side



Load point height

Medium Stick
2500 mm
(8'3")

Reach	Undercarriage configuration	kg	3.0 m			4.5 m			6.0 m			7.5 m			m			
			Front	Side	Rear	Front	Side	Rear	Front	Side	Rear	Front	Side	Rear	Front	Side	Rear	
6.0 m	Rear dozer up	kg				*6250	5950	5100	5100	3650	3200				*3300	3050	2650	6.63
	Rear dozer down	kg				*6250	5850	5100		3650	3200					*3300	3050	
	Dozer and stabilizer down	kg				*6250	6250	6250		*5550	5350					*3300	3300	
	2 sets of stabilizers down Wide axle rear dozer up	kg				*6250	6250	5900	*5550	*5550	3500					*3300	3300	
4.5 m	Rear dozer up	kg				*7250	5600	4850	5000	3550	3100				*3150	2450	2150	7.41
	Rear dozer down	kg				*7250	5550	4850		*6150	3550					*3150	2500	
	Dozer and stabilizer down	kg				*7250	*7250	*7250		*6150	5250					*3150	*3150	
	2 sets of stabilizers down Wide axle rear dozer up	kg				*7250	*7250	5300	*6150	*6150	6050					*3150	*3150	
3.0 m	Rear dozer up	kg				7500	5150	4450	4800	3350	2950	3400	2350	2050	3200	2200	1900	7.82
	Rear dozer down	kg					*8800	5100		*6750	3350					*3200	2200	
	Dozer and stabilizer down	kg					*8800	7900		*6750	5050		5100	2350		*3200	*3200	
	2 sets of stabilizers down Wide axle rear dozer up	kg					*8800	*8800	*6750	*6750	5850	*5300	*5300	4150	*3200	*3200	*3200	
1.5 m	Rear dozer up	kg				7000	4750	4050	4600	3200	2750	3350	2300	2000	3050	2100	1800	7.91
	Rear dozer down	kg					*10 000	4700		7150	3150		5050	2300		*3350	2100	
	Dozer and stabilizer down	kg					*10 000	7400		7250	4850		5150	3500		*3350	3250	
	2 sets of stabilizers down Wide axle rear dozer up	kg				*10 000	*10 000	8800	*7300	*7300	5650	*5850	5250	4050	*3350	*3350	*3350	
0.0 m	Rear dozer up	kg				6800	4500	3850	4450	3050	2600	3250	2250	1900	3150	2150	1850	7.70
	Rear dozer down	kg					*10 250	4500		7000	3050		4950	2250		*3750	2150	
	Dozer and stabilizer down	kg					*10 250	7150		7100	4700		5050	3450		*3750	3300	
	2 sets of stabilizers down Wide axle rear dozer up	kg				*10 250	*10 250	8550	*7450	7250	5500	*5700	5200	4000	*3750	*3750	*3750	
-1.5 m	Rear dozer up	kg	*9500	8400	6900	6700	4450	3800	4400	3000	2550				3450	2400	2050	7.16
	Rear dozer down	kg		*9500	8300		*9500	4450		6950	3000					*4400	2400	
	Dozer and stabilizer down	kg		*9500	*9500		*9500	7100		*7000	4650					*4400	3650	
	2 sets of stabilizers down Wide axle rear dozer up	kg	*9500	*9500	*9500	*9500	*9500	8450	*7000	*7000	5450				*4400	4250	2250	
-3.0 m	Rear dozer up	kg				6800	4550	3850	4500	3050	2650			4300	2950	2550	6.21	
	Rear dozer down	kg					*7700	4500		*5350	3050				*4900	2950		
	Dozer and stabilizer down	kg					*7700	7200		*5350	4700				*4900	4500		
	2 sets of stabilizers down Wide axle rear dozer up	kg				*7700	*7700	4300	*5350	*5350	2900				*4900	*4900		

Medium Stick
2500 mm
(8'3")

Reach	Undercarriage configuration	lb	10.0 ft			15.0 ft			20.0 ft			25.0 ft			ft			
			Front	Side	Rear	Front	Side	Rear	Front	Side	Rear	Front	Side	Rear	Front	Side	Rear	
20.0 ft	Rear dozer up	lb				*13,700	12,600	11,000	11,000	7,800	6,800				*7,400	6,800	5,900	21.56
	Rear dozer down	lb					*13,700	12,600		*11,500	7,800					*7,400	6,800	
	Dozer and stabilizer down	lb					*13,700	*13,700		*11,500	11,500					*7,400	*7,400	
	2 sets of stabilizers down Wide axle rear dozer up	lb				*13,700	*13,700	12,000	*11,500	*11,500	*11,500	7,500				*7,400	*7,400	
15.0 ft	Rear dozer up	lb				*15,700	12,100	10,500	10,800	7,600	6,700				*7,000	5,500	4,800	24.21
	Rear dozer down	lb					*15,700	12,000		*13,400	7,600					*7,000	5,500	
	Dozer and stabilizer down	lb					*15,700	*15,700		*13,400	11,300					*7,000	*7,000	
	2 sets of stabilizers down Wide axle rear dozer up	lb				*15,700	*15,700	11,500	*13,400	*13,400	13,100					*7,000	*7,000	
10.0 ft	Rear dozer up	lb				16,100	11,100	9,600	10,400	7,300	6,300	7,300	5,100	4,400	*7,000	4,900	4,200	25.62
	Rear dozer down	lb					*18,900	11,100		*14,600	7,300		*10,100	5,100		*7,000	4,900	
	Dozer and stabilizer down	lb					*18,900	17,000		*14,600	10,900		*10,100	7,700		*7,000	*7,000	
	2 sets of stabilizers down Wide axle rear dozer up	lb				*18,900	*18,900	10,500	*14,600	*14,600	12,600	*10,100	*10,100	8,900	*7,000	*7,000	*7,000	
5.0 ft	Rear dozer up	lb				15,100	10,200	8,700	9,900	6,900	5,900	7,200	4,900	4,300	6,800	4,700	4,000	25.95
	Rear dozer down	lb					*21,600	10,200		15,400	6,800		10,800	4,900		*7,400	4,700	
	Dozer and stabilizer down	lb					*21,600	16,000		15,600	10,400		11,100	7,500		*7,400	7,100	
	2 sets of stabilizers down Wide axle rear dozer up	lb				*21,600	*21,600	9,700	*15,800	*15,800	12,200	*12,600	11,300	8,700	*7,400	*7,400	*7,400	
0.0 ft	Rear dozer up	lb				14,600	9,700	8,300	9,600	6,600	5,600	7,000	4,800	4,200	6,900	4,800	4,100	25.26
	Rear dozer down	lb					*22,200	9,700		15,000	6,600		*10,300	4,800		*8,200	4,800	
	Dozer and stabilizer down	lb					*22,200	15,400		15,300	10,100		*10,300	7,400		*8,200	7,300	
	2 sets of stabilizers down Wide axle rear dozer up	lb				*22,200	*22,200	9,800	*16,100	15,600	11,800	*10,300	*10,300	8,600	*8,200	*8,200	*8,200	
-5.0 ft	Rear dozer up	lb	*21,700	18,100	14,800	14,500	9,600	8,100	9,500	6,500	5,500				7,700	5,200	4,500	23.46
	Rear dozer down	lb		*21,700	17,800		*20,600	9,600		14,900	6,500					*9,800	5,300	
	Dozer and stabilizer down	lb		*21,700	*21,700		*20,600	15,300		*15,100	10,000					*9,800	8,100	
	2 sets of stabilizers down Wide axle rear dozer up	lb	*21,700	*21,700	*21,700	*20,600	*20,600	16,200	*15,100	*15,100	11,700				*9,800	*9,800	9,400	
-10.0 ft	Rear dozer up	lb				14,700	9,800	8,300	9,700	6,600	5,700				9,600	6,500	5,600	20.24
	Rear dozer down	lb					*16,600	9,700		*11,100	6,600					*10,700	6,500	
	Dozer and stabilizer down	lb					*16,600	15,500		*11,100	10,200					*10,700	10,100	
	2 sets of stabilizers down Wide axle rear dozer up	lb				*16,600	*16,600	9,200	*11,100	*11,100	6,700					*10,700	*10,700	

*Limited by hydraulic rather than tipping load.

Lift capacity ratings are based on ISO 10567:2007, they do not exceed 87% of hydraulic lifting capacity or 75% of tipping load. The load point is the center line of the bucket pivot mounting pin on the stick. The oscillating axle must be locked. Lifting capacities are based on the machine standing on a firm uniform supporting surface and the Variable Boom Cylinder adjusted to the maximum length. For lifting capacity including bucket and/or quick coupler, the respective weight has to be subtracted from above values. The use of a work tool attachment point to handle/lift objects, could affect the machine lift performance.

Always refer to the appropriate Operation and Maintenance Manual for specific product information.

M318D Wheel Excavator

Lift Capacities – Variable Adjustable Boom (5260 mm [17'3"])

All values are without bucket and without QC, with counterweight (4000 kg [8,810 lb]), heavy lift on.

		Load at maximum reach (sticknose/bucket pin)			Load over front			Load over rear			Load over side			Load point height		
Long Stick 2800 mm (9'3")	Undercarriage configuration	3.0 m			4.5 m			6.0 m			7.5 m			m		
6.0 m	Rear dozer up									5200						
	Rear dozer down	kg														*2900
4.5 m	Dozer and stabilizer down	kg														
	2 sets of stabilizers down	kg														
3.0 m	Wide axle rear dozer up	kg														
	Wide axle rear dozer up	kg														
1.5 m	Rear dozer up	kg														
	Rear dozer down	kg														
0.0 m	Dozer and stabilizer down	kg														
	2 sets of stabilizers down	kg														
-1.5 m	Wide axle rear dozer up	kg														
	Wide axle rear dozer up	kg														
-3.0 m	Rear dozer up	kg														
	Rear dozer down	kg														
	Dozer and stabilizer down	kg														
	2 sets of stabilizers down	kg														
	Wide axle rear dozer up	kg														
	Wide axle rear dozer up	kg														

		Load at maximum reach (sticknose/bucket pin)			Load over front			Load over rear			Load over side			Load point height		
Long Stick 2800 mm (9'3")	Undercarriage configuration	10.0 ft			15.0 ft			20.0 ft			25.0 ft			ft		
20.0 ft	Rear dozer up	lb														
	Rear dozer down	lb														
15.0 ft	Dozer and stabilizer down	lb														
	2 sets of stabilizers down	lb														
10.0 ft	Wide axle rear dozer up	lb														
	Wide axle rear dozer up	lb														
5.0 ft	Rear dozer up	lb														
	Rear dozer down	lb														
0.0 ft	Dozer and stabilizer down	lb														
	2 sets of stabilizers down	lb														
-5.0 ft	Wide axle rear dozer up	lb														
	Wide axle rear dozer up	lb														
-10.0 ft	Rear dozer up	lb														
	Rear dozer down	lb														
	Dozer and stabilizer down	lb														
	2 sets of stabilizers down	lb														
	Wide axle rear dozer up	lb														
	Wide axle rear dozer up	lb														

*Limited by hydraulic rather than tipping load.

Lift capacity ratings are based on ISO 10567:2007, they do not exceed 87% of hydraulic lifting capacity or 75% of tipping load. The load point is the center line of the bucket pivot mounting pin on the stick. The oscillating axle must be locked. Lifting capacities are based on the machine standing on a firm uniform supporting surface and the Variable Boom Cylinder adjusted to the maximum length. For lifting capacity including bucket and/or quick coupler, the respective weight has to be subtracted from above values. The use of a work tool attachment point to handle/lift objects, could affect the machine lift performance.

Always refer to the appropriate Operation and Maintenance Manual for specific product information.

M318D Wheel Excavator

Lift Capacities – Variable Adjustable Boom (5260 mm [17'3"])

All values are without bucket and without QC, with counterweight (4000 kg [8,810 lb]), heavy lift on.



Industrial Stick 3300 mm (10'10")

Stick Length	Undercarriage configuration	3.0 m			4.5 m			6.0 m			7.5 m			Load point height			m			
		Load over front	Load over rear	Load over side	Load over front	Load over rear	Load over side	Load over front	Load over rear	Load over side	Load over front	Load over rear	Load over side	Load over front	Load over rear	Load over side				
6.0 m	Rear dozer up																			
	Rear dozer down	kg																		
	Dozer and stabilizer down	kg																		
	2 sets of stabilizers down Wide axle rear dozer up	kg																		
4.5 m	Rear dozer up	kg																		
	Rear dozer down	kg																		
	Dozer and stabilizer down	kg																		
	2 sets of stabilizers down Wide axle rear dozer up	kg																		
3.0 m	Rear dozer up	kg																		
	Rear dozer down	kg																		
	Dozer and stabilizer down	kg																		
	2 sets of stabilizers down Wide axle rear dozer up	kg																		
1.5 m	Rear dozer up	kg																		
	Rear dozer down	kg																		
	Dozer and stabilizer down	kg																		
	2 sets of stabilizers down Wide axle rear dozer up	kg																		
0.0 m	Rear dozer up	kg																		
	Rear dozer down	kg																		
	Dozer and stabilizer down	kg																		
	2 sets of stabilizers down Wide axle rear dozer up	kg																		
-1.5 m	Rear dozer up	kg																		
	Rear dozer down	kg																		
	Dozer and stabilizer down	kg																		
	2 sets of stabilizers down Wide axle rear dozer up	kg																		
-3.0 m	Rear dozer up	kg																		
	Rear dozer down	kg																		
	Dozer and stabilizer down	kg																		
	2 sets of stabilizers down Wide axle rear dozer up	kg																		

Industrial Stick 3300 mm (10'10")

Stick Length	Undercarriage configuration	10.0 ft			15.0 ft			20.0 ft			25.0 ft			Load point height			ft			
		Load over front	Load over rear	Load over side	Load over front	Load over rear	Load over side	Load over front	Load over rear	Load over side	Load over front	Load over rear	Load over side	Load over front	Load over rear	Load over side				
20.0 ft	Rear dozer up	lb																		
	Rear dozer down	lb																		
	Dozer and stabilizer down	lb																		
	2 sets of stabilizers down Wide axle rear dozer up	lb																		
15.0 ft	Rear dozer up	lb																		
	Rear dozer down	lb																		
	Dozer and stabilizer down	lb																		
	2 sets of stabilizers down Wide axle rear dozer up	lb																		
10.0 ft	Rear dozer up	lb																		
	Rear dozer down	lb																		
	Dozer and stabilizer down	lb																		
	2 sets of stabilizers down Wide axle rear dozer up	lb																		
5.0 ft	Rear dozer up	lb																		
	Rear dozer down	lb																		
	Dozer and stabilizer down	lb																		
	2 sets of stabilizers down Wide axle rear dozer up	lb																		
0.0 ft	Rear dozer up	lb																		
	Rear dozer down	lb																		
	Dozer and stabilizer down	lb																		
	2 sets of stabilizers down Wide axle rear dozer up	lb																		
-5.0 ft	Rear dozer up	lb																		
	Rear dozer down	lb																		
	Dozer and stabilizer down	lb																		
	2 sets of stabilizers down Wide axle rear dozer up	lb																		
-10.0 ft	Rear dozer up	lb																		
	Rear dozer down	lb																		
	Dozer and stabilizer down	lb																		
	2 sets of stabilizers down Wide axle rear dozer up	lb																		

*Limited by hydraulic rather than tipping load.


Lift capacity ratings are based on ISO 10567:2007, they do not exceed 87% of hydraulic lifting capacity or 75% of tipping load. The load point is the center line of the bucket pivot mounting pin on the stick. The oscillating axle must be locked. Lifting capacities are based on the machine standing on a firm uniform supporting surface and the Variable Boom Cylinder adjusted to the maximum length. For lifting capacity including bucket and/or quick coupler, the respective weight has to be subtracted from above values. The use of a work tool attachment point to handle/lift objects, could affect the machine lift performance.

Always refer to the appropriate Operation and Maintenance Manual for specific product information.

M318D Wheel Excavator

Lift Capacities – One-Piece Boom (5350 mm [17'7"])

All values are without bucket and without QC, with counterweight (4000 kg [8,810 lb]), heavy lift on.

 Load at maximum reach (sticknose/bucket pin)
  Load over front
  Load over rear
  Load over side
  Load point height

Short Stick
2200 mm
(7'3")

Stick Length	Undercarriage configuration	3.0 m			4.5 m			6.0 m			7.5 m			Load point height			m
		kg	kg	kg	kg	kg	kg	kg	kg	kg	kg	kg	kg	kg	kg	kg	
6.0 m	Rear dozer up							5000	3600	3150					*4450	3300	2900
	Rear dozer down	kg							*5850	3600						*4450	3300
	Dozer and stabilizer down	kg							*5850	5250						*4450	*4450
	2 sets of stabilizers down	kg						*5850	*5850	*5850						*4450	*4450
	Wide axle rear dozer up	kg							3600	3450						3300	3150
4.5 m	Rear dozer up				*7450	5450	4750	4950	3500	3050					3750	2650	2350
	Rear dozer down	kg			*7450	*7450	5450		*6250	3500						*4350	2650
	Dozer and stabilizer down	kg			*7450	*7450	*7450	*6250	*6250	5150						*4350	3950
	2 sets of stabilizers down	kg			*7450	*7450	*7450	*6250	*6250	5950						*4350	*4350
	Wide axle rear dozer up	kg				5450	5200		3500	3350						2650	2550
3.0 m	Rear dozer up				7300	5050	4350	4750	3350	2900	3400	2350	2050		3350	2350	2050
	Rear dozer down	kg				*9050	5000		*6850	3350						*4500	2350
	Dozer and stabilizer down	kg				*9050	7700		*6850	5000		*4700	3550			*4500	3550
	2 sets of stabilizers down	kg				*9050	*9050	*6850	*6850	5800	*4700	*4700	4100			*4500	4100
	Wide axle rear dozer up	kg				5050	4800		3350	3200			2250			2350	2250
1.5 m	Rear dozer up				6900	4700	4000	4550	3150	2750	3300	2300	2000		3250	2250	1950
	Rear dozer down	kg				*10 200	4650		7050	3150						*4850	2250
	Dozer and stabilizer down	kg				*10 200	7300		7150	4800						*4850	3400
	2 sets of stabilizers down	kg				*10 200	*10 200	*7400	7300	5600	*5900	5100	3500			*4850	3950
	Wide axle rear dozer up	kg				4700	8650		3150	3000		2300	2200			2250	2150
0.0 m	Rear dozer up				6750	4500	3850	4450	3050	2650					3350	2300	2000
	Rear dozer down	kg				*10 300	4500		6900	3050						5000	2300
	Dozer and stabilizer down	kg				*10 300	7150		7050	4700						5150	3500
	2 sets of stabilizers down	kg				*10 300	8450	*7550	7200	5450						5250	4050
	Wide axle rear dozer up	kg				4550	4300		3050	2900						2300	2200
-1.5 m	Rear dozer up		*10 150	8550	7000	6750	4500	3850	4400	3000	2600				3700	2550	2200
	Rear dozer down	kg		*10 150	8400		*9500	4500		6900	3050					5650	2550
	Dozer and stabilizer down	kg		*10 150	*10 150		*9500	7100		7000	4650					5750	3900
	2 sets of stabilizers down	kg		*10 150	*10 150	*9500	*9500	8450	*7050	*7050	5450					*5800	4550
	Wide axle rear dozer up	kg		8550	7900		4500	4250		3050	2900					2550	2450
-3.0 m	Rear dozer up		*10 050	8700	7150	6850	4600	3900							4700	3250	2800
	Rear dozer down	kg		*10 050	8550		*7700	4550								*5550	3250
	Dozer and stabilizer down	kg		*10 050	*10 050		*7700	7200								*5550	4950
	2 sets of stabilizers down	kg		*10 050	*10 050	*7700	*7700	*7700								*5550	*5550
	Wide axle rear dozer up	kg		8700	8050		4600	4350								3250	3100

Short Stick
2200 mm
(7'3")

Stick Length	Undercarriage configuration	10.0 ft			15.0 ft			20.0 ft			25.0 ft			Load point height			ft
		lb	lb	lb	lb	lb	lb	lb	lb	lb	lb	lb	lb	lb	lb		
20.0 ft	Rear dozer up							10,800	7,700	6,800					*9,900	7,400	6,500
	Rear dozer down	lb							*11,400	7,700						*9,900	7,400
	Dozer and stabilizer down	lb							*11,400	11,300						*9,900	*9,900
	2 sets of stabilizers down	lb						*11,400	*11,400	*11,400						*9,900	*9,900
	Wide axle rear dozer up	lb							7,700	7,400						7,400	7,100
15.0 ft	Rear dozer up				*16,100	11,800	10,300	10,600	7,500	6,600					8,300	5,900	5,200
	Rear dozer down	lb				*16,100	11,700		*13,600	7,500						*9,600	*9,600
	Dozer and stabilizer down	lb				*16,100	*16,100	*13,600	*13,600	11,100						*9,600	8,700
	2 sets of stabilizers down	lb				*16,100	*16,100	*13,600	*13,600	12,800						*9,600	*9,600
	Wide axle rear dozer up	lb				11,800	11,200		7,600	7,200						5,900	5,700
10.0 ft	Rear dozer up				15,800	10,900	9,400	10,200	7,200	6,300					7,400	5,200	4,500
	Rear dozer down	lb				*19,500	10,800		*14,800	7,200						*9,900	5,200
	Dozer and stabilizer down	lb				*19,500	16,600		*14,800	10,700						*9,900	7,800
	2 sets of stabilizers down	lb				*19,500	*19,500	*14,800	*14,800	12,400						*9,900	9,000
	Wide axle rear dozer up	lb				10,900	10,300		7,200	6,900						5,200	5,000
5.0 ft	Rear dozer up				14,900	10,100	8,700	9,900	6,800	5,900					7,100	5,000	4,300
	Rear dozer down	lb				*22,000	10,100		15,200	6,800						*10,600	5,000
	Dozer and stabilizer down	lb				*22,000	15,700		15,400	10,300						*10,600	7,500
	2 sets of stabilizers down	lb				*22,000	18,600	*16,000	15,800	12,000						*10,600	8,700
	Wide axle rear dozer up	lb				10,100	9,600		6,800	6,500						5,000	4,800
0.0 ft	Rear dozer up				14,500	9,700	8,300	9,600	6,600	5,700					7,300	5,100	4,400
	Rear dozer down	lb				*22,300	9,700		14,900	6,600						11,000	5,100
	Dozer and stabilizer down	lb				*22,300	15,300		15,100	10,100						11,300	7,700
	2 sets of stabilizers down	lb				*22,300	18,200	*16,300	15,500	11,800						11,600	8,900
	Wide axle rear dozer up	lb				9,800	9,200		6,600	6,300						5,100	4,900
-5.0 ft	Rear dozer up		*23,200	18,300	15,100	14,500	9,700	8,300	9,500	6,500	5,600				8,200	5,600	4,900
	Rear dozer down	lb		*23,200	18,000		*20,600	9,700		14,800	6,500					12,500	5,700
	Dozer and stabilizer down	lb		*23,200	*23,200		*20,600	15,300		15,100	10,000					12,700	8,600
	2 sets of stabilizers down	lb		*23,200	*23,200	*20,600	*20,600	18,100	*15,200	*15,200	11,700					*12,800	10,000
	Wide axle rear dozer up	lb		18,300	17,000		9,700	9,200		6,500	6,200					5,700	5,400
-10.0 ft	Rear dozer up		*21,800	18,700	15,400	14,700	9,900	8,500							10,500	7,200	6,200
	Rear dozer down	lb		*21,800	18,400		*16,600	9,900								*12,100	7,200
	Dozer and stabilizer down	lb		*21,800	*21,800		*16,600	15,500								*12,100	11,000
	2 sets of stabilizers down	lb		*21,800	*21,800	*16,600	*16,600	9,900								*12,100	*12,100
	Wide axle rear dozer up	lb		18,700	17,300		9,900	9,400								7,200	6,900

*Limited by hydraulic rather than tipping load.

Lift capacity ratings are based on ISO 10567:2007, they do not exceed 87% of hydraulic lifting capacity or 75% of tipping load. The load point is the center line of the bucket pivot mounting pin on the stick. The oscillating axle must be locked. Lifting capacities are based on the machine standing on a firm uniform supporting surface. For lifting capacity including bucket and/or quick coupler, the respective weight has to be subtracted from above values. The use of a work tool attachment point to handle/lift objects, could affect the machine lift performance.

Always refer to the appropriate Operation and Maintenance Manual for specific product information.

M318D Wheel Excavator

Lift Capacities – One-Piece Boom (5350 mm [17'7"])

All values are without bucket and without QC, with counterweight (4000 kg [8,810 lb]), heavy lift on.

Load at maximum reach (sticknose/bucket pin) Load over front Load over rear Load over side Load point height

Medium Stick 2500 mm (8'3")

Stick Length	Undercarriage configuration	3.0 m			4.5 m			6.0 m			7.5 m			Load point height			m
6.0 m	Rear dozer up							5050	3650	3200					*3450	3000	2650
	Rear dozer down	kg							*5550	3650						*3450	3000
	Dozer and stabilizer down	kg							*5550	5300						*3450	*3450
	2 sets of stabilizers down	kg						*5550	*5550	*5550						*3450	*3450
	Wide axle rear dozer up	kg							3650	3500						3050	2900
4.5 m	Rear dozer up							4950	3550	3100					*3350	2500	2150
	Rear dozer down	kg							*6000	3550						*3350	2500
	Dozer and stabilizer down	kg							*6000	5200						*3350	*3350
	2 sets of stabilizers down	kg						*6000	*6000	*6000						*3350	*3350
	Wide axle rear dozer up	kg							3550	3400						2500	2400
3.0 m	Rear dozer up					7400	5100	4400	4800	3350	2950	3400	2400	2100	3150	2200	1950
	Rear dozer down	kg					*8700	5100		*6650	3350					*3450	2200
	Dozer and stabilizer down	kg					*8700	7800		*6650	5000		5200	3550		*3450	3350
	2 sets of stabilizers down	kg				*8700	*8700	*8700	*6650	*6650	5800	*5500	5300	4100		*3450	*3450
	Wide axle rear dozer up	kg					5100	4850		3350	3200		2400	2300		2200	2150
1.5 m	Rear dozer up					7000	4750	4050	4600	3200	2750	3300	2300	2000	3050	2100	1850
	Rear dozer down	kg					*10 000	4700		7100	3200		4950	2300		*3650	2150
	Dozer and stabilizer down	kg					*10 000	7350		7200	4800		5100	3500		*3650	3200
	2 sets of stabilizers down	kg				*10 000	*10 000	8700	*7300	*7300	5600	*5850	5200	4050	*3650	*3650	*3650
	Wide axle rear dozer up	kg					4750	4500		3200	3050		2300	2200		2100	2050
0.0 m	Rear dozer up					6750	4550	3850	4450	3050	2650	3250	2250	1950	3150	2150	1850
	Rear dozer down	kg					*10 350	4500		6950	3050		4900	2250		*4100	2150
	Dozer and stabilizer down	kg					*10 350	7150		7050	4700		5050	3400		*4100	3300
	2 sets of stabilizers down	kg				*10 350	*10 350	8500	*7550	7200	5450	*5850	5150	3950	*4100	*4100	3800
	Wide axle rear dozer up	kg					4550	4300		3050	2900		2250	2150		2150	2050
-1.5 m	Rear dozer up		*9400	8450	6950	6700	4500	3800	4400	3000	2600				3450	2400	2050
	Rear dozer down	kg		*9400	8350		*9750	4450		6850	3000					*5000	2400
	Dozer and stabilizer down	kg		*9400	*9400		*9750	7100		7000	4650					*5000	3600
	2 sets of stabilizers down	kg	*9400	*9400	*9400	*9750	*9750	8450	*7200	7150	5400				*5000	*5000	4200
	Wide axle rear dozer up	kg		8500	7850		4500	4250		3000	2850					2400	2250
-3.0 m	Rear dozer up		*11 000	8650	7100	6800	4550	3900	4450	3050	2650				4250	2900	2550
	Rear dozer down	kg		*11 000	8500		*8200	4550		*5800	3050					*5350	2900
	Dozer and stabilizer down	kg		*11 000	*11 000		*8200	7150		*5800	4700					*5350	4450
	2 sets of stabilizers down	kg	*11 000	*11 000	*11 000	*8200	*8200	*8200	*5800	*5800	5500				*5350	*5350	5200
	Wide axle rear dozer up	kg		8650	8000		4550	4300		3050	2950					2950	2800

Medium Stick 2500 mm (8'3")

Stick Length	Undercarriage configuration	10.0 ft			15.0 ft			20.0 ft			25.0 ft			Load point height			ft
20.0 ft	Rear dozer up							10,900	7,800	6,900					*7,700	6,800	6,000
	Rear dozer down	lb							*11,600	7,800						*7,700	6,800
	Dozer and stabilizer down	lb							*11,600	11,400						*7,700	*7,700
	2 sets of stabilizers down	lb						*11,600	*11,600	*11,600						*7,700	*7,700
	Wide axle rear dozer up	lb							7,800	7,500						6,800	6,500
15.0 ft	Rear dozer up							10,700	7,600	6,700					*7,400	5,500	4,800
	Rear dozer down	lb							*13,100	7,600						*7,400	5,500
	Dozer and stabilizer down	lb							*13,100	11,200						*7,400	*7,400
	2 sets of stabilizers down	lb						*13,100	*13,100	12,900						*7,400	*7,400
	Wide axle rear dozer up	lb							7,600	7,300						5,500	5,300
10.0 ft	Rear dozer up					16,000	11,000	9,600	10,300	7,300	6,300	7,300	5,100	4,500	7,000	4,900	4,300
	Rear dozer down	lb					*18,700	11,000		*14,500	7,200		*10,600	5,100		*7,600	4,900
	Dozer and stabilizer down	lb					*18,700	16,800		*14,500	10,800		*10,600	7,700		*7,600	7,300
	2 sets of stabilizers down	lb				*18,700	*18,700	*18,700	*14,500	*14,500	12,500	*10,600	8,900	7,600	*7,600	*7,600	*7,600
	Wide axle rear dozer up	lb					11,100	10,500		7,300	6,900		5,100	4,900		4,900	4,700
5.0 ft	Rear dozer up					15,000	10,200	8,800	9,900	6,900	6,000	7,200	5,000	4,300	6,700	4,700	4,100
	Rear dozer down	lb					*21,600	10,200		15,200	6,900		10,700	5,000		*8,100	4,700
	Dozer and stabilizer down	lb					*21,600	15,900		15,500	10,400		11,000	7,500		*8,100	7,100
	2 sets of stabilizers down	lb				*21,600	*21,600	18,800	*15,800	*15,800	12,100	*12,700	11,200	8,700	*8,100	*8,100	*8,100
	Wide axle rear dozer up	lb					10,200	9,700		6,900	6,600		5,000	4,800		4,700	4,500
0.0 ft	Rear dozer up					14,600	9,800	8,300	9,600	6,600	5,700	7,000	4,900	4,200	6,900	4,800	4,100
	Rear dozer down	lb					*22,400	9,700		14,900	6,600		10,600	4,900		*9,100	4,800
	Dozer and stabilizer down	lb					*22,400	15,400		15,200	10,100		10,800	7,400		*9,100	7,300
	2 sets of stabilizers down	lb				*22,400	*22,400	18,200	*16,300	*16,300	11,800	*11,500	11,100	8,600	*9,100	*9,100	8,400
	Wide axle rear dozer up	lb					9,800	9,300		6,600	6,300		4,900	4,600		4,800	4,600
-5.0 ft	Rear dozer up		*23,800	18,200	15,000	14,400	9,700	8,200	9,500	6,500	5,600				7,600	5,200	4,500
	Rear dozer down	lb		*21,400	17,900		*21,100	9,600		14,800	6,500					*11,100	5,300
	Dozer and stabilizer down	lb		*21,400	*21,400		*21,100	15,300		15,000	10,000					*11,100	8,000
	2 sets of stabilizers down	lb	*21,400	*21,400	*21,400	*21,100	*21,100	18,100	*15,500	15,400	11,700				*11,100	*11,100	9,300
	Wide axle rear dozer up	lb		18,200	16,900		9,700	9,200		6,500	6,200					5,300	5,000
-10.0 ft	Rear dozer up		*23,800	18,500	15,300	14,600	9,800	8,400	9,700	6,600	5,700				9,400	6,500	5,600
	Rear dozer down	lb		*23,800	18,300		*17,600	9,800		*12,300	6,600					*11,800	6,500
	Dozer and stabilizer down	lb		*23,800	*23,800		*17,600	15,400		*12,300	10,100					*11,800	9,900
	2 sets of stabilizers down	lb	*23,800	*23,800	*23,800	*17,600	*17,600	*17,600	*12,300	*12,300	11,800				*11,800	*11,800	11,600
	Wide axle rear dozer up	lb		18,600	17,200		9,800	9,300		6,700	6,300					6,500	6,200

*Limited by hydraulic rather than tipping load.

Lift capacity ratings are based on ISO 10567:2007, they do not exceed 87% of hydraulic lifting capacity or 75% of tipping load. The load point is the center line of the bucket pivot mounting pin on the stick. The oscillating axle must be locked. Lifting capacities are based on the machine standing on a firm uniform supporting surface. For lifting capacity including bucket and/or quick coupler, the respective weight has to be subtracted from above values. The use of a work tool attachment point to handle/lift objects, could affect the machine lift performance.

Always refer to the appropriate Operation and Maintenance Manual for specific product information.

M318D Wheel Excavator

Lift Capacities – One-Piece Boom (5350 mm [17'7"])

All values are without bucket and without QC, with counterweight (4000 kg [8,810 lb]), heavy lift on.



Long Stick 2800 mm (9'3")	Undercarriage configuration	3.0 m			4.5 m			6.0 m			7.5 m			Load point height			m	
		Load over front	Load over rear	Load over side	Load over front	Load over rear	Load over side	Load over front	Load over rear	Load over side	Load over front	Load over rear	Load over side	Load over front	Load over rear	Load over side		
6.0 m	Rear dozer up							5150	3700	3250				*3050	2800	2500	7.00	
	Rear dozer down	kg							*5200	3700					*3050	2800		
	Dozer and stabilizer down	kg							*5200	*5200	*5200				*3050	*3050		
	2 sets of stabilizers down	kg							*5200	*5200	*5200				*3050	*3050		
	Wide axle rear dozer up	kg							3700	3550					2800	2700		
4.5 m	Rear dozer up							5000	3600	3150	3500	2500	2150	*2950	2350	2050	7.73	
	Rear dozer down	kg							*5750	3600			*4050	2500	2350			
	Dozer and stabilizer down	kg							*5750	5250			*4050	3650	*2950			
	2 sets of stabilizers down	kg							*5750	*5750		*4050	*4050	*2950	*2950			
	Wide axle rear dozer up	kg							3600	3450		*4050	2400	2350	2250			
3.0 m	Rear dozer up					7500	5200	4500	4800	3400	2950	3450	2400	2100	3000	2100	1850	8.12
	Rear dozer down	kg					*8350	5150		*6450	3400		5100	2400	*3000	2100		
	Dozer and stabilizer down	kg					*8350	7900		*6450	5050		5200	3600	*3000	*3000		
	2 sets of stabilizers down	kg				*8350	*8350	*8350	*6450	*6450	5850		5350	4150	*3000	*3000		
	Wide axle rear dozer up	kg				5200	4950		3400	3250		*5550	2400	2300	2100	2000		
1.5 m	Rear dozer up					7050	4800	4100	4600	3200	2850	3350	2300	2000	2900	2000	1750	8.21
	Rear dozer down	kg					*9800	4750		*7150	3200		5000	2350	*3200	2050		
	Dozer and stabilizer down	kg					*9800	7450		*7150	4850		5100	3500	*3200	3050		
	2 sets of stabilizers down	kg				*9800	*9800	8800	*7150	*7150	5650	*5800	5250	4050	*3200	*3200		
	Wide axle rear dozer up	kg				4800	4550		3200	3050			2350	2200	2000	1950		
0.0 m	Rear dozer up					6800	4550	3900	4450	3050	2650	3250	2250	1950	3000	2050	1800	8.01
	Rear dozer down	kg					*10 350	4550		6950	3050		4900	2250	*3600	*3600		
	Dozer and stabilizer down	kg					*10 350	7150		7050	4700		5050	3450	*3600	3100		
	2 sets of stabilizers down	kg				*10 350	*10 350	8500	*7500	7200	5500	*5850	5150	4000	*3600	*3600		
	Wide axle rear dozer up	kg				4550	4300		3050	2950			2250	2150	2050	1950		
-1.5 m	Rear dozer up								4400	3000	2600				3250	2250	1950	7.50
	Rear dozer down	kg	*9000	8400	6900	6700	4500	3800		6850	3000					4250	2250	
	Dozer and stabilizer down	kg		*9000	8300		*9950	4450		7100	4650					*4250	3400	
	2 sets of stabilizers down	kg		*9000	*9000		*9950	8000	*7300	7150	5400					*4250	3950	
	Wide axle rear dozer up	kg	*9000	8450	7800		4500	4250		3000	2850					2250	2150	
-3.0 m	Rear dozer up								4450	3050	2600				3900	2700	2350	6.60
	Rear dozer down	kg	*11 850	8550	7050	6750	4500	3850		6250	3050					*5250	2700	
	Dozer and stabilizer down	kg		*11 850	8400		*8600	4500		*6250	4650					*5250	4100	
	2 sets of stabilizers down	kg		*11 850	*11 850		*8600	7150		*6250	4650					*5250	4800	
	Wide axle rear dozer up	kg	*11 850	*11 850	*11 850		*8600	8450	*6250	*6250	5450					*5250	2700	
-4.5 m	Rear dozer up									4700	4050						4350	5.09
	Rear dozer down	kg								*5650	4700						*4600	
	Dozer and stabilizer down	kg								*5650	*5650						*4600	
	2 sets of stabilizers down	kg								*5650	*5650						*4600	
	Wide axle rear dozer up	kg					*5650	4700		4450						4000	3800	

Long Stick 2800 mm (9'3")	Undercarriage configuration	10.0 ft			15.0 ft			20.0 ft			25.0 ft			Load point height			ft		
		Load over front	Load over rear	Load over side	Load over front	Load over rear	Load over side	Load over front	Load over rear	Load over side	Load over front	Load over rear	Load over side	Load over front	Load over rear	Load over side			
20.0 ft	Rear dozer up									11,000	7,900	7,000				*6,700	6,300	5,500	22.74
	Rear dozer down	lb									*11,200	7,900					*6,700	6,300	
	Dozer and stabilizer down	lb									*11,200	*11,200					*6,700	*6,700	
	2 sets of stabilizers down	lb									*11,200	*11,200					*6,700	*6,700	
	Wide axle rear dozer up	lb									7,900	7,600					6,300	6,100	
15.0 ft	Rear dozer up									10,800	7,700	6,800	7,500	5,300	4,700	*6,500	5,200	4,600	25.30
	Rear dozer down	lb									*12,600	7,700		*7,600	5,300		*6,500	5,200	
	Dozer and stabilizer down	lb									*12,600	11,300		*7,600	*7,600		*6,500	*6,500	
	2 sets of stabilizers down	lb								*12,600	*12,600	*12,600	*7,600	*7,600	*6,500	*6,500	*6,500		
	Wide axle rear dozer up	lb								7,700	7,400			5,300	5,100		5,200	5,000	
10.0 ft	Rear dozer up									16,100	11,200	9,700	10,400	7,300	6,400	7,400	5,200	4,500	26.61
	Rear dozer down	lb									*18,000	11,200		*14,000	7,300		11,000	5,200	
	Dozer and stabilizer down	lb									*18,000	17,000		*14,000	10,900		11,200	7,700	
	2 sets of stabilizers down	lb								*18,000	*18,000	*18,000	*14,000	*14,000	12,600	*11,600	11,500	8,900	
	Wide axle rear dozer up	lb								11,200	10,700			7,300	7,000		5,200	5,000	
5.0 ft	Rear dozer up									15,200	10,300	8,900	10,000	6,900	6,000	7,200	5,000	4,400	26.94
	Rear dozer down	lb									*21,200	10,300		15,300	6,900		10,700	5,000	
	Dozer and stabilizer down	lb									*21,200	16,000		*15,500	10,500		11,000	7,500	
	2 sets of stabilizers down	lb								*21,200	18,900		*15,500	12,200	*12,600	11,200	8,700	*7,100	
	Wide axle rear dozer up	lb								10,400	9,800		*15,500	6,900	6,600		5,000	4,800	
0.0 ft	Rear dozer up																		26.28
	Rear dozer down	lb	*11,700	*11,700	*11,700	14,600	9,800	8,400	9,600	6,600	5,700	7,000	4,900	4,200	6,600	4,500	3,900		
	Dozer and stabilizer down	lb		*11,700	*11,700		*22,400	9,800		14,900	6,600		10,600	4,900		*7,900	9,900		
	2 sets of stabilizers down	lb		*11,700	*11,700		*22,400	15,400		15,200	10,100		10,800	7,400		*7,900	6,900		
	Wide axle rear dozer up	lb	*11,700	*11,700	*11,700		9,800	9,300		15,500	11,800		11,100	8,600		*7,900	*7,900		
-5.0 ft	Rear dozer up																		24.57
	Rear dozer down	lb	*20,400	18,000	14,800	14,400	9,600	8,200	9,500	6,500	5,600				7,200	4,900	4,300		
	Dozer and stabilizer down	lb		*20,400	17,800		*21,500	9,600		14,800	6,500					*9,500	9,500		
	2 sets of stabilizers down	lb		*20,400	*20,400		*21,500	15,200		15,000	10,000					*9,500	7,500		
	Wide axle rear dozer up	lb	*20,400	*20,400	*20,400		*21,500	18,100	*15,800	15,300	11,700					*9,500	8,700		
-10.0 ft	Rear dozer up																		21.52
	Rear dozer down	lb	*25,700	18,400	15,100	14,500	9,700	8,300	9,600	6,600	5,700				8,700	6,000	5,200		
	Dozer and stabilizer down	lb		*25,700	18,100		*18,500	9,700		*13,300	6,600					*11,600	6,000		
	2 sets of stabilizers down	lb		*25,700	*25,700		*18,500	15,300		*13,300	10,100					*11,600	9,100		
	Wide axle rear dozer up	lb	*25,700	*25,700	*25,700		*18,500	18,200	*13,300	*13,300	11,700					*11,600	10,600		
-15.0 ft	Rear dozer up																		16.37
	Rear dozer down	lb																	
	Dozer and stabilizer down	lb																	
	2 sets of stabilizers down	lb																	
	Wide axle rear dozer up	lb																	

*Limited by hydraulic rather than tipping load.

Lift capacity ratings are based on ISO 10567:2007, they do not exceed 87% of hydraulic lifting capacity or 75% of tipping load. The load point is the center line of the bucket pivot mounting pin on the stick. The oscillating axle must be locked. Lifting capacities are based on the machine standing on a firm uniform supporting surface. For lifting capacity including bucket and/or quick coupler, the respective weight has to be subtracted from above values. The use of a work tool attachment point to handle/lift objects, could affect the machine lift performance.

Always refer to the appropriate Operation and Maintenance Manual for specific product information.

M318D Wheel Excavator

Lift Capacities – One-Piece Boom (5350 mm [17'7"])

All values are without bucket and without QC, with counterweight (4000 kg [8,810 lb]), heavy lift on.



Industrial Stick 3300 mm (10'10")

Stick Length	Undercarriage configuration	3.0 m			4.5 m			6.0 m			7.5 m			Load point height			m			
		Front	Side	Rear	Front	Side	Rear	Front	Side	Rear	Front	Side	Rear	Front	Side	Rear				
6.0 m	Rear dozer up																*3250	2950	2600	
	Rear dozer down																	*3250	2950	2500
	Dozer and stabilizer down																	*3250	*3250	*3250
	2 sets of stabilizers down Wide axle rear dozer up																	*3250	*3250	*3250
4.5 m	Rear dozer up																	*3250	2500	2250
	Rear dozer down																	*3250	*3250	2500
	Dozer and stabilizer down																	*3250	*3250	*3250
	2 sets of stabilizers down Wide axle rear dozer up																	*3250	*3250	*3250
3.0 m	Rear dozer up																		2300	2050
	Rear dozer down																		*3350	2300
	Dozer and stabilizer down																		*3350	3300
	2 sets of stabilizers down Wide axle rear dozer up																		*3350	*3350
1.5 m	Rear dozer up																		2200	1950
	Rear dozer down																		*3600	2200
	Dozer and stabilizer down																		*3600	3200
	2 sets of stabilizers down Wide axle rear dozer up																		*3600	*3600
0.0 m	Rear dozer up																		2200	1950
	Rear dozer down																		*4100	2250
	Dozer and stabilizer down																		*4100	3250
	2 sets of stabilizers down Wide axle rear dozer up																		*4100	3700
-1.5 m	Rear dozer up																		2400	2100
	Rear dozer down																		*4950	2400
	Dozer and stabilizer down																		*4950	3500
	2 sets of stabilizers down Wide axle rear dozer up																		*4950	4000
-3.0 m	Rear dozer up																		2750	2400
	Rear dozer down																		*5800	2750
	Dozer and stabilizer down																		*5800	4050
	2 sets of stabilizers down Wide axle rear dozer up																		*5800	4700
-4.5 m	Rear dozer up																		3750	3300
	Rear dozer down																		*5650	3750
	Dozer and stabilizer down																		*5650	5650
	2 sets of stabilizers down Wide axle rear dozer up																		*5650	*5650

Industrial Stick 3300 mm (10'10")

Stick Length	Undercarriage configuration	10.0 ft			15.0 ft			20.0 ft			25.0 ft			Load point height			ft			
		Front	Side	Rear	Front	Side	Rear	Front	Side	Rear	Front	Side	Rear	Front	Side	Rear				
20.0 ft	Rear dozer up																		6,600	5,800
	Rear dozer down																		*7,100	6,600
	Dozer and stabilizer down																		*7,100	*7,100
	2 sets of stabilizers down Wide axle rear dozer up																		*7,100	*7,100
15.0 ft	Rear dozer up																		5,600	4,900
	Rear dozer down																		*7,100	5,600
	Dozer and stabilizer down																		*9,300	*7,100
	2 sets of stabilizers down Wide axle rear dozer up																		*9,300	*7,100
10.0 ft	Rear dozer up																		5,100	4,500
	Rear dozer down																		*7,400	5,100
	Dozer and stabilizer down																		*7,400	7,300
	2 sets of stabilizers down Wide axle rear dozer up																		*7,400	*7,400
5.0 ft	Rear dozer up																		4,900	4,300
	Rear dozer down																		*8,000	4,900
	Dozer and stabilizer down																		*8,000	7,000
	2 sets of stabilizers down Wide axle rear dozer up																		*8,000	*8,000
0.0 ft	Rear dozer up																		4,900	4,300
	Rear dozer down																		*9,000	4,900
	Dozer and stabilizer down																		*9,000	7,200
	2 sets of stabilizers down Wide axle rear dozer up																		*9,000	8,200
-5.0 ft	Rear dozer up																		5,200	4,600
	Rear dozer down																		*10,900	5,200
	Dozer and stabilizer down																		*10,900	7,900
	2 sets of stabilizers down Wide axle rear dozer up																		*10,900	8,900
-10.0 ft	Rear dozer up																		6,100	5,400
	Rear dozer down																		*12,800	6,100
	Dozer and stabilizer down																		*12,800	9,000
	2 sets of stabilizers down Wide axle rear dozer up																		*12,800	10,400
-15.0 ft	Rear dozer up																		8,500	7,400
	Rear dozer down																		*12,500	8,500
	Dozer and stabilizer down																		*12,500	*12,500
	2 sets of stabilizers down Wide axle rear dozer up																		*12,500	*12,500

*Limited by hydraulic rather than tipping load.

Lift capacity ratings are based on ISO 10567:2007, they do not exceed 87% of hydraulic lifting capacity or 75% of tipping load. The load point is the center line of the bucket pivot mounting pin on the stick. The oscillating axle must be locked. Lift capacities are based on the machine standing on a firm uniform supporting surface. For lifting capacity including bucket and/or quick coupler, the respective weight has to be subtracted from above values. The use of a work tool attachment point to handle/lift objects, could affect the machine lift performance.

Always refer to the appropriate Operation and Maintenance Manual for specific product information.