

D6G Series 2 LGP WH

Waste Handler

CATERPILLAR[®]



Engine

Engine Model	Cat [®] 3306T	
Gross Power	131 kW	175 hp
Flywheel Power	119 kW	160 hp

Weights

Operating Weight	18 790 kg	41,425 lb
------------------	-----------	-----------

Blades

S-Blade Capacity with Trash Rack	8.18 m ³	10.7 yd ³
----------------------------------	---------------------	----------------------

- For standard specification and features, refer to the standard Specalog for this machine. The machine shown on front cover image may have more optional attachments in order to get better performance in landfill application.

D6G Series 2 LGP WH Features

Waste Handling Guards

Extensive guarding helps protect critical machine components, body panels and the radiator from being damaged by debris under harsh waste handling environments. Minimizing build-up helps prevent component damage.

Debris Resistant Features

A variety of debris environment features are included with the Waste Handling Arrangement to reduce plugging, extend service life, and enhance productivity.

Recommended Options

Several additional options are highly recommended to complement the Waste Handling Arrangement and ensure peak performance. Such as the landfill blades and specially designed track shoes.



Contents

Waste Handling Guards.....	3
Waste Handling Attachments.....	4
Recommended Options.....	5
Serviceability and Customer Support.....	6
D6G Series 2 LGP Specifications	7
D6G Series 2 LGP Standard Equipment.....	8
D6G Series 2 LGP Optional Equipment.....	8
Notes.....	9

Cat® Waste Handling Track-Type Tractors offer a variety of options to meet the demands of specific waste handling needs. Specially designed and field proven for work in the severest of landfill conditions.

Waste Handling Guards

Minimizing build-up helps prevent component damage.

Hinged Radiator Guard

The hinged Heavy-duty radiator guard protects the cooling system and allows easy access to the radiator for cleaning.

Extreme Service Crankcase (belly) Guards

The crankcase (belly) guards serve a dual purpose. They help prevent contact damage to vital power train components, and help keep debris out of the power train compartments.

Heavy Duty Engine Enclosures

The perforated heavy duty engine enclosures help prevent airborne materials from entering the engine compartment and help reduce radiator plugging, which can cause cooling system problems.

Lift Cylinder Line Guards

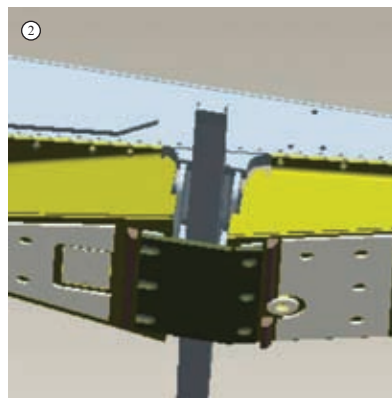
The tough polyethylene lift cylinder line guards help protect hydraulic lines from contact damage, while maintaining hose flexibility.

Heavy Duty Radiator Bottom Guard

The heavy-duty radiator bottom guards protect the radiator from damaging in extreme service environment.

Heavy Duty Hydraulic and Fuel Tank Guard

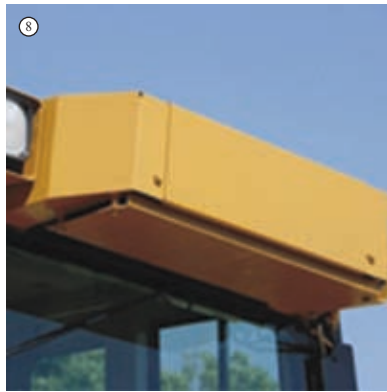
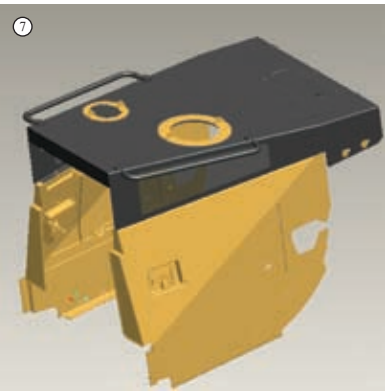
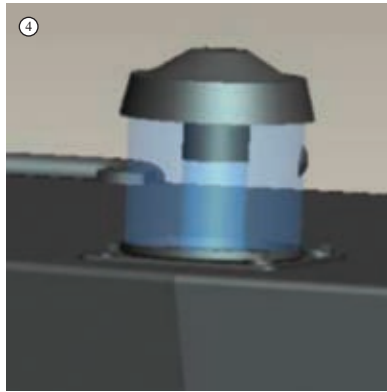
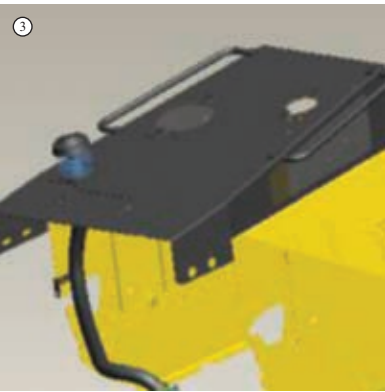
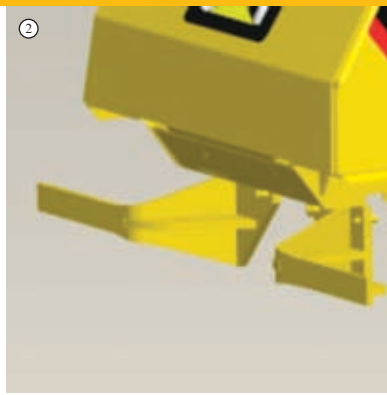
The hydraulic and fuel guard helps protect implement hydraulic oil tank and fuel tank.



1. Hinged Radiator Guard and Lift Cylinder Line Guards
2. Extreme Service Crankcase Guards
3. Heavy Duty Engine Enclosures
4. Heavy Duty Hydraulic and Fuel Tank Guard
5. Heavy Duty Radiator Bottom Guard

Waste Handling Attachments

These required attachments are included in Waste Handling Arrangement.



Raised Air Pre-cleaner

The raised pre-cleaner with screen helps reduce the likelihood of airborne debris from plugging the air intake, and provides clean air for optimum engine performance and fuel efficiency.

Rear Striker Bars

The rear striker bars prevent debris from riding up the track and damaging the fenders or fuel and hydraulic tanks.

Ducted Alternator

The covered and ducted alternator prevents debris entry into the alternator, ducting line and rain cap provide fresh air to the alternator.

Heavy-duty Handles

The heavy-duty handles are manufactured from solid rod to withstand the rigors of landfill operation.

Ejector Fan and Trash Resistant Radiator

- The ejector fan with increased speed and fan blade is designed with curved edges to help eject debris out radially. This helps prevent debris from clogging the radiator.
- Trash resistant radiator with larger fin spacing allows airborne debris to pass through the radiator core.

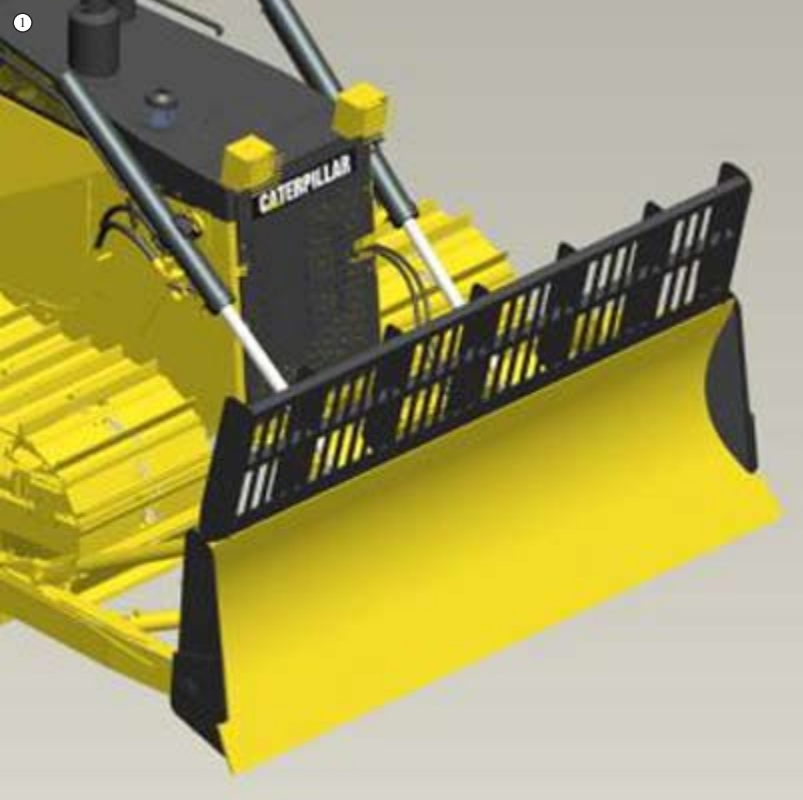
Additional Sealing

To help eliminate debris entry into areas of the machine additional sealing is provided. Such as the additional seals on engine hood.

Air Conditioner

The air conditioner is included in waste handling arrangement.

1. Raised Air Pre-cleaner
2. Rear Striker Bars
3. Ducted Alternator
4. Ducted Alternator
5. Heavy-duty Handles
6. Ejector Fan and Trash Resistant Radiator
7. Additional Sealing
8. Air Conditioner



Recommended Options

Features for peak performance. Several additional options are available.

Cat Landfill Blades

The landfill blade increases the dozing capacity in trash and helps prevent material from spilling over the blade and entering the radiator. The additional wear plate added prevents the blade from damage when working in highly abrasive materials.

Trapezoidal Hole Track Shoes

For landfill application that requires machine flotation, traction and working in abrasive material, 915 mm (36 in) single grouser track shoes with trapezoidal hole is an optional attachment.

The trapezoidal hole track shoes reduce refuse packing within the track and reduces track chain tightening and accelerated pin and bushing wear.

The trapezoidal holes relieve packing by allowing the sprocket to punch out dirt and debris.

Forward Lights, Guarded

The optional guarded front lights with mesh guards can assist to protect lamps from being damaged by the debris in landfill application.

1. Landfill Blade
2. Trapezoidal Hole Track Shoe
3. Forward Lights, Guarded

Serviceability and Customer Support

The most serviceable machines from the most committed dealers.



Serviceability

Minimizes maintenance and repair downtime. Large openings on either side of the machine make major service points easily accessible.

Machine Selection

Make detailed comparisons of the machines you are considering before you buy. How long do components last? What is the cost of preventative maintenance? What is the true cost of lost production? Your Cat dealer can give you precise answers to these questions.

Purchase

Consider the financing options available as well as day-to-day operating costs. This is also the time to look at dealer services that can be included in the cost of the machine to yield lower equipment owning and operating costs over the long run.

Product Support

Plan for effective maintenance before buying equipment. Choose from a wide range of maintenance services at the time you purchase your machine. Programs such as Custom Track Service (CTS), S•O•SSM analysis, Technical Analysis and guaranteed maintenance contracts give peak life and performance to your machine.

Parts Program

You will find nearly every part at your dealer parts counter. Cat Dealers use a worldwide computer network to find in-stock parts to minimize machine downtime. Ask about your Cat Dealer's exchange program for major components. This can shorten repair time and lower costs.

Remanufactured Components

Genuine Cat Remanufactured parts save you money. You receive the same warranty and reliability as new products at cost savings to further reduce operating costs. Components are available for the drive train, engine and hydraulics.

Operation

Improving operating techniques can boost your profits. Your Cat dealer has training videotapes, literature and other ideas to help you increase productivity.

D6G Series 2 LGP Specifications

Engine

Engine Model	Cat® 3306T	
Gross Power	131 kW	175 hp
Flywheel Power	119 kW	160 hp
RPM	1,900 rpm	
Number of Cylinders	6	
Bore	121 mm	4.75 in
Stroke	152 mm	6 in
Displacement	10.5 L	638 in ³
Net Power – ISO 9249	119 kW	160 hp
Net Power – SAE J1349	119 kW	160 hp
Net Power – EU 80/1269	119 kW	160 hp

Service Refill Capacities

Fuel Tank	320 L	84 gal
-----------	-------	--------

Weights

Operating Weight	18 790 kg	41,425 lb
------------------	-----------	-----------

- Includes all lubricants, full fuel tank, 6SLGP Blade with landfill trash rack, Non-ROPS cab with Air Conditioner and Waste Handler guarding.

Undercarriage

Width of Shoe – LGP	927 mm	36 in
Track Gauge – LGP	2108 mm	83 in
Track on Ground – LGP	2880 mm	113 in
Ground Contact Area – LGP	5.34 m ²	8,277 in ²
Track Rollers/Side	7	

Blades

Blade Type	S LGP Blade with Trash Rack	
S-Blade Capacity with Trash Rack	8.18 m ³	10.7 yd ³
S-Blade Width	3.7 m	12 ft 2 in
LGP S-Blade Height with Trash Rack	1.7 m	5 ft 7 in

Transmission

1 Forward	4 km/h	2.5 mph
2 Forward	6.9 km/h	4.3 mph
3 Forward	10.8 km/h	6.7 mph
1 Reverse	4.8 km/h	3 mph
2 Reverse	8.4 km/h	5.2 mph
3 Reverse	12.9 km/h	8 mph

Dimensions

Ground Clearance	310 mm	12.2 in
Width Over Trunnions	3.24 m	10 ft 8 in
Width with 927 mm (36.5 in) Shoes	3.035 m	9 ft 12 in
Overall Machine Height to Top of Non-ROPS Cab	3.112 m	10 ft 3 in
Overall Length with Blade	5.162 m	16 ft 11 in
Overall Length without Blade	3.946 m	12 ft 11 in

D6G Series 2 LGP Standard Equipment

Standard equipment may vary. Consult your Cat dealer for details.

ELECTRICAL

35 amp alternator
Maintenance free battery – 2
Hour meter
Horn

OPERATOR ENVIRONMENT

Decelerator
Gauges
Fuel level
Transmission/torque converter
oil temperature
Engine coolant temperature
Ammeter (lamp)
Engine oil pressure, (lamp and audible)

Hand throttle
Suspension seat – vinyl
Seat belt
Brake pedal – single

POWER TRAIN

Double Reduction Final Drives
Cat® 3306 diesel engine with 24-volt starter
Fuel priming pump – manual
Fuel/Water separator
Air cleaner with pre-cleaner
Blower fan
Muffler (curved tip)

UNDERCARRIAGE

Track End Guiding Guards
7-Roller Track Frame
927 mm (36 in) Self-cleaning Track Shoes
Hydraulic Track Adjusters
Restrained Equalizer Bar
Segmented Sprocket

OTHER STANDARD EQUIPMENT

Crankcase Guard
Hinged Radiator Guard
320 Liter (84 Gal) Fuel Tank
Front Pull Devise and retrieval hitch
Cap Locks (Fuel, Hydraulic,
Fuel Drain Cover)

D6G Series 2 LGP Optional Equipment

Optional equipment may vary. Consult your Cat dealer for details.

Lighting Package

Forward facing (2)
Rear facing (2)
Alarm, backup
Heavy duty radiator guard, punched hole
Engine enclosure, normal duty
Engine enclosure, heavy duty

Guard

Vandal, instrument panel (for canopy)
Track guiding (center)
Full length track roller frame
Fuel tank
ROPS cab
Non-ROPS cab
Pre-cleaner with pre-screener

915 mm (36 in) single grouser sealed
and lubricated track
915 mm (36 in) single grouser sealed and
lubricated track with Trapezoidal Holes
Straight bulldozer blade with tilt cylinder
Straight blade with Trash Rack
Drawbar – rigid
Heater
Air Conditioning

D6G Series 2 LGP WH Waste Handler

For more complete information on Cat products, dealer services, and industry solutions, visit us on the web at www.cat.com

© 2010 Caterpillar Inc.
All rights reserved

Materials and specifications are subject to change without notice. Featured machines in photos may include additional equipment. See your Cat dealer for available options.

CAT, CATERPILLAR, SAFETY.CAT.COM, their respective logos, "Caterpillar Yellow" and the "Power Edge" trade dress, as well as corporate and product identity used herein, are trademarks of Caterpillar and may not be used without permission.

AEHQ6068-01 (06-2010)

Replaces AEHQ6068

CATERPILLAR[®]