

# 519 569

## Stationary Mount Loader



	519SM	519SM/EHC	569SM	569SM/EHC
Gross Power	55.9kw (75HP)	55.9kw (75HP)	74.5kw (100HP)	74.5kw (100HP)
Boom Length	9.1m (30'0")	9.1m (30'0")	10.9m (36')	10.9m (36')
Operating Weight	7219kg (15915lb)	6947kg (15315lb)	8593kg (18945lb)	8321kg (18345lb)

# Caterpillar® 519 and 569 Stationary Mount Loader

*Caterpillar has a full line of stationary mount loaders for a wide range of mill yard applications. Four models are available with onboard or remote power.*

---

## Operation Station

On standard loaders with operator's station, the hydraulic pilot joystick controls and rocker swing pedal are ergonomically designed for ease of operation and maximum loader control required for the high cycle mill yard applications.

---

## Mounting System

The Resilient Pad Mounting System includes a set of special rubber isolators on each mounting fastener that absorbs stress in two directions. An additional hydraulic accumulator is built into the main boom cylinder circuit to further absorb peak-load shocks.

---

## Enclosed Components

Weatherproof electric service panels include starters, controls, transformers, circuit breakers and fuse blocks.

---

## Boom Length Options

Heavy-duty boom options range in length from 7.6 m to 10.9m (25' to 36') for handling a variety of tree lengths.

## ***Workday Productivity.***

*Caterpillar stationary mount loaders are completely pre-wired, tested and ready for on-site electric hookup, including installation kits with the required fasteners for mounting to steel or concrete pedestals. And with the Resilient Pad Mounting system, your workday will be productive and comfortable.*





---

### **Motor Options**

Electric motors range in horsepower from 75 to 100 hp and are totally enclosed and rated for severe duty. Power supply wiring packages provide for 440V/60Hz US or 575V/60Hz Canadian service.

---

## Operator Station

*The ergonomically designed operator station provides greater operator comfort for increased productivity and reduced fatigue.*

---



The operator station is designed with comfort in mind. The spacious cabs feature a large, fully adjustable suspension seat with lumbar support. Fold-up armrests are fully adjustable to allow adjustment of the joystick controls to match the operator for ease of operation, increased performance.

---

## Superior Visibility

*Designed for maximum visibility, operator comfort and safety.*

---



Excellent visibility of the work area is provided through large tinted cab windows. Overhead visibility is maximized through the large, tinted Lexan skylight. Operator protection is afforded through the front guard. This swing-out guard is designed for quick and simple access to allow cleaning of the front window.

# Caterpillar Stationary Mount Loader Lift Charts

The Stationary Mount Loader features a hydraulic system that provides smooth, efficient operation in a variety of millyard applications.

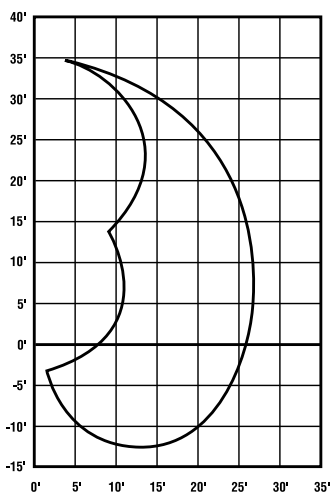
## Notes

Do not attempt to lift or hold any load that is greater than the rated values over the end or side at their specified lift point and height. The weight of the grapple and all lifting accessories must be deducted from lift capacities shown.

1. All figures shown in these charts represent rated lift capacities.
2. Capacities shown in bold are 100% of hydraulic capability; other capacities shown are 87% of hydraulic capability.
3. The lift point is located at the boom/grapple pivot pin.

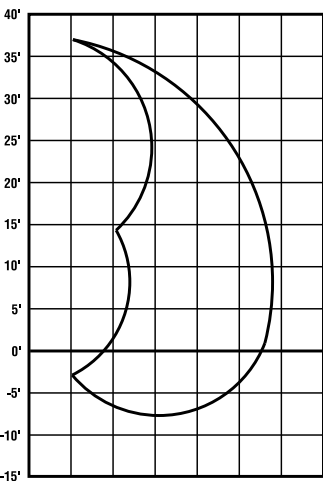
4. Manufacturer assumes no responsibility for the proper fit or structural integrity of the mounting pedestal and/or platform supplied by the customer.
5. Operator shall be fully acquainted with the Operator's Manual and all safety instructions furnished prior to operating the machine.
6. Lift capacities are in compliance with SAE J2417, "Lift Capacity Calculation Method-Knuckleboom Log Loaders and Certain Forestry Equipment".

## Lift Chart



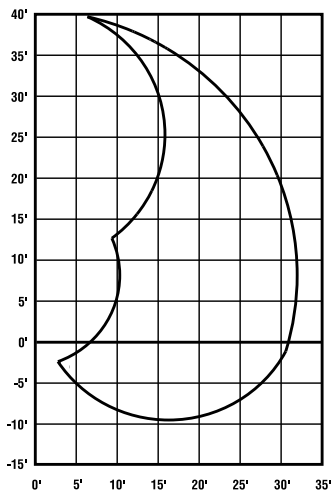
### 519SM and 519SM/EHC Loaders 8.2m (27') Boom

	1.5m (5')		3m (10')		4.6m (15')		6.1m (20')		7.6m (25')	
	kg.	lbs.	kg.	lbs.	kg.	lbs.	kg.	lbs.	kg.	lbs.
<b>25'/7.6m</b>					<b>5021</b>	<b>11060</b>				
					4368	9622				
<b>20'/6.1m</b>					<b>5177</b>	<b>11402</b>	<b>4486</b>	<b>9882</b>		
					4504	9920	3903	8597		
<b>15'/4.6m</b>					<b>5311</b>	<b>11698</b>	<b>4634</b>	<b>10207</b>		
					4620	10177	4032	8880		
<b>10'/3m</b>			<b>3788</b>	<b>8343</b>	<b>5854</b>	<b>12894</b>	<b>4799</b>	<b>10571</b>	<b>3962</b>	<b>8728</b>
			3295	7258	5093	11218	4175	9197	3447	7593
<b>5'/1.5m</b>					<b>7229</b>	<b>15923</b>	<b>5951</b>	<b>13107</b>	<b>3890</b>	<b>8568</b>
					6289	13853	5177	11403	3384	7454
<b>0 0.0</b>					<b>8730</b>	<b>19229</b>	<b>6469</b>	<b>14249</b>	<b>4061</b>	<b>8946</b>
					6603	16729	5628	12397	3533	7783
<b>-5'/-1.5m</b>			<b>4764</b>	<b>10494</b>	<b>8057</b>	<b>17747</b>	<b>5811</b>	<b>12800</b>	<b>3040</b>	<b>6697</b>
			4145	9130	7010	15440	5056	11136	2645	5826
<b>-10'/-3m</b>	<b>3050</b>	<b>6718</b>	<b>6276</b>	<b>13824</b>	<b>6152</b>	<b>13552</b>	<b>4083</b>	<b>8993</b>		
	2654	5845	5460	12027	5353	11790	3552	7824		
<b>-15'/-4.6m</b>			<b>3494</b>	<b>7697</b>	<b>2564</b>	<b>5648</b>				
			3040	6696	2231	4914				



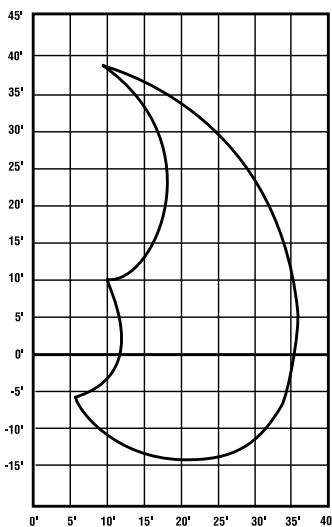
### 519SM and 519SM/EHC Loaders 9.1m (30') Boom

	1.5m (5')		3m (10')		4.6m (15')		6.1m (20')		7.6m (25')		9.1m (30')	
	kg.	lbs.	kg.	lbs.	kg.	lbs.	kg.	lbs.	kg.	lbs.	kg.	lbs.
<b>30'/9.1m</b>					<b>4206</b>	<b>9264</b>						
					3659	8060						
<b>25'/7.6m</b>					<b>4714</b>	<b>10384</b>	<b>3940</b>	<b>8679</b>				
					4101	9034	3428	7551				
<b>20'/6.1m</b>							<b>4179</b>	<b>9206</b>	<b>3088</b>	<b>6802</b>		
							3636	8009	2687	5918		
<b>15'/4.6m</b>					<b>4419</b>	<b>9734</b>	<b>4267</b>	<b>9398</b>	<b>3713</b>	<b>8178</b>		
					3845	8469	3712	8176	3230	7115		
<b>10'/3m</b>					<b>4942</b>	<b>10886</b>	<b>4488</b>	<b>9885</b>	<b>3769</b>	<b>8301</b>		
					4300	9471	3904	8600	3279	7222		
<b>5'/1.5m</b>					<b>6380</b>	<b>14053</b>	<b>5670</b>	<b>12490</b>	<b>4407</b>	<b>9707</b>	<b>1996</b>	<b>4397</b>
					5551	12226	4933	10866	3834	8445	1737	3825
<b>0 0.0</b>					<b>8448</b>	<b>18608</b>	<b>6299</b>	<b>13874</b>	<b>4873</b>	<b>10733</b>		
					7350	16189	5480	12070	4239	9338		
<b>-5'/-1.5m</b>			<b>2892</b>	<b>6369</b>	<b>7983</b>	<b>17583</b>	<b>5894</b>	<b>12983</b>	<b>4320</b>	<b>9515</b>		
			2516	5541	6945	15297	5128	11295	3758	8278		
<b>-10'/-3m</b>	<b>2039</b>	<b>4492</b>	<b>4532</b>	<b>9983</b>	<b>6538</b>	<b>14401</b>	<b>4775</b>	<b>10517</b>	<b>2937</b>	<b>6470</b>		
	1774	3908	3943	8685	5688	12529	4154	9150	2556	5629		
<b>-15'/-4.6m</b>			<b>4942</b>	<b>10885</b>	<b>3981</b>	<b>8768</b>	<b>2518</b>	<b>5547</b>				
			4299	9470	3463	7628	2191	4826				



### 569SM and 569SM/EHC Loaders 9.6m (32'6'') Boom

	1.5m (5')		3m (10')		4.6m (15')		6.1m (20')		7.6m (25')		9.1m (30')	
	kg.	lbs.	kg.	lbs.	kg.	lbs.	kg.	lbs.	kg.	lbs.	kg.	lbs.
<b>30'/9.1m</b>												
<b>25'/7.6m</b>							<b>5118</b>	<b>11274</b>				
							4453	9808				
<b>20'/6.1m</b>							<b>5850</b>	<b>12885</b>	<b>4577</b>	<b>10082</b>		
							5089	11210	3982	8771		
<b>15'/4.6m</b>							<b>6422</b>	<b>14145</b>	<b>5560</b>	<b>12247</b>	<b>2997</b>	<b>6601</b>
							5587	12306	4837	10655	2607	5743
<b>10'/3m</b>					<b>7558</b>	<b>16647</b>	<b>7002</b>	<b>15422</b>	<b>6115</b>	<b>13470</b>	<b>4093</b>	<b>9016</b>
					6575	14483	6091	13417	5320	11719	3561	7844
<b>5'/1.5m</b>					<b>10730</b>	<b>23634</b>	<b>8567</b>	<b>18870</b>	<b>7127</b>	<b>15698</b>	<b>4740</b>	<b>10441</b>
					9335	20562	7453	16417	6200	13657	4124	9084
<b>0 0.0</b>			<b>18803</b>	<b>41417</b>	<b>12247</b>	<b>26975</b>	<b>9179</b>	<b>20217</b>	<b>7305</b>	<b>16090</b>	<b>4939</b>	<b>10878</b>
			16359	36033	10654	23468	7985	17589	6355	13998	4297	9464
<b>-5'/-1.5m</b>			<b>9850</b>	<b>21695</b>	<b>12595</b>	<b>27741</b>	<b>9205</b>	<b>20275</b>	<b>7026</b>	<b>15475</b>		
			8569	18875	10957	24135	8008	17639	6112	13463		
<b>-10'/-3m</b>	<b>3712</b>	<b>8177</b>	<b>9507</b>	<b>20940</b>	<b>11367</b>	<b>25037</b>	<b>8250</b>	<b>18172</b>	<b>5897</b>	<b>12990</b>		
	3230	7114	8271	18218	9889	21782	7178	15810	5131	11301		



### 569SM and 569SM/EHC Loaders 10.9m (36') Boom

	3m (10')		4.6m (15')		6.1m (20')		7.6m (25')		9.1m (30')		10.6m (35')	
	kg.	lbs.	kg.	lbs.	kg.	lbs.	kg.	lbs.	kg.	lbs.	kg.	lbs.
<b>35'/10.6m</b>												
			<b>5110</b>	<b>11255</b>								
			4446	9792								
<b>30'/9.1m</b>					<b>4985</b>	<b>10979</b>						
					4337	9552						
<b>25'/7.6m</b>					<b>5744</b>	<b>12653</b>	<b>4697</b>	<b>10345</b>				
					4998	11008	4086	9000				
<b>20'/6.1m</b>					<b>6087</b>	<b>13407</b>	<b>5508</b>	<b>12132</b>	<b>3943</b>	<b>8685</b>		
					5295	11664	4792	10555	3430	7556		
<b>15'/4.6m</b>					<b>6629</b>	<b>14601</b>	<b>5997</b>	<b>13210</b>	<b>5037</b>	<b>11094</b>		
					5767	12703	5218	11493	4382	9652		
<b>10'/3m</b>			<b>8808</b>	<b>19400</b>	<b>7924</b>	<b>17454</b>	<b>6701</b>	<b>14761</b>	<b>5444</b>	<b>11992</b>	<b>2748</b>	<b>6053</b>
			7663	16878	6894	15185	5830	12842	4737	10433	2391	5266
<b>5'/1.5m</b>			<b>11401</b>	<b>25113</b>	<b>8652</b>	<b>19057</b>	<b>7024</b>	<b>15472</b>	<b>5873</b>	<b>12936</b>	<b>3306</b>	<b>7283</b>
			9919	21848	7527	16580	6111	13461	5109	11254	2877	6336
<b>0 0.0</b>			<b>12364</b>	<b>27233</b>	<b>9096</b>	<b>20036</b>	<b>7171</b>	<b>15795</b>	<b>5804</b>	<b>12784</b>	<b>3200</b>	<b>7048</b>
			10757	23693	7914	17431	6239	13742	5049	11122	2784	6132
<b>-5'/-1.5m</b>	<b>4876</b>	<b>10740</b>	<b>12156</b>	<b>26775</b>	<b>8973</b>	<b>19763</b>	<b>6956</b>	<b>15321</b>	<b>5420</b>	<b>11939</b>		
	4242	9344	10575	23294	7806	17194	6051	13329	4716	10387		
<b>-10'/-3m</b>	<b>5803</b>	<b>12783</b>	<b>10713</b>	<b>23598</b>	<b>8081</b>	<b>17799</b>	<b>6170</b>	<b>13591</b>	<b>4454</b>	<b>9810</b>		
	5049	11121	9321	20530	7030	15485	5368	11824	3875	8535		

## Caterpillar Stationary Mount Loader Specifications

#### Motor Power Supply

Electric Motor:	56 kW (75 HP) @ 1800 RPM 74 kW (100 HP) @ 1800 RPM
Electric Power Supply:	460 Volt: 60 Hz 575 Volt: 60 Hz
Collector Ring:	Four (4) Ring High Voltage Auxiliary Low Voltage Collector
Service Panel:	NEMA 12 Enclosure
Pump Drive:	Direct Through Flex Coupling
Magnetic Starting System:	Across-the-line

519SM	519SM/EHC	569SM	569SM/EHC
S	S		
S	S	S	S
O	O	O	O
S	S	S	S
N/A	O	N/A	O
S	S	S	S
S	S	S	S
S	S	S	S

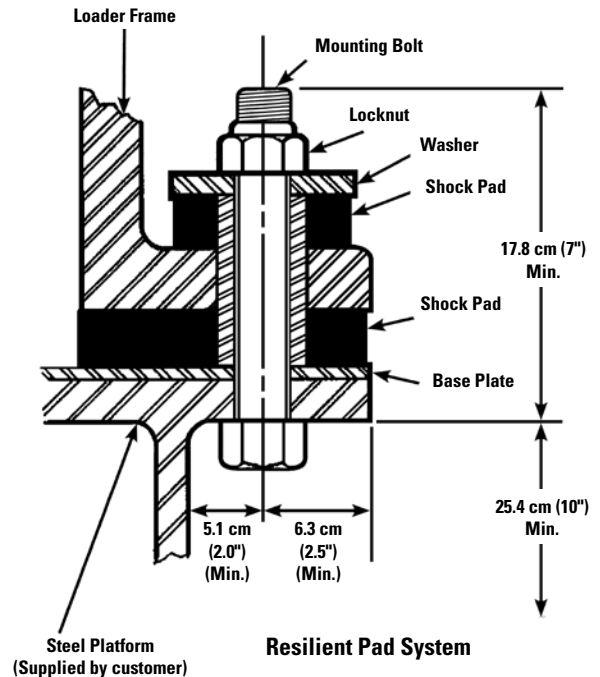
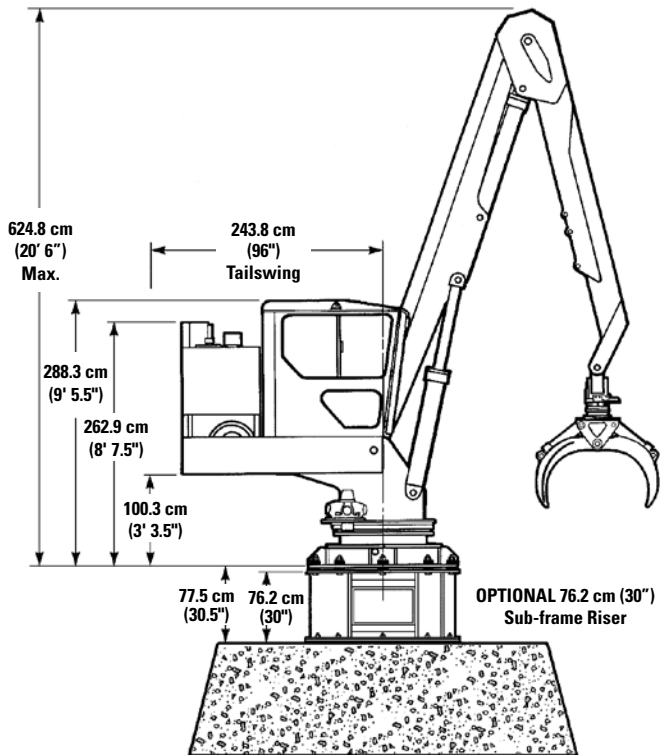
S = Standard  
O = Optional

Power Supply Mounting:	Turntable Mount	519SM	519SM/EHC	569SM	569SM/EHC
	Remote Skid Mount	S	S	S	S
			O		O
<b>Hydraulic System</b>					
Pumps:	Three (3) In-Line Gear Pumps	S	S	S	S
Flows:	GPM @ 1800 RPM	44-33-22	44-33-22	45-54-16	45-54-16
Pressures:	System PSI	2200	2200	2500	2500
	Swing PSI	2400	2400	2500	2500
Swing Motor:	Radial Piston Motor	S	S	S	S
Swing Speed:	Revolutions Per Minute	8	8	7	7
Rotation:	Continuous	S	S	S	S
	Non-Continuous Limited Rotation	O	O	O	O
Controls:	Pilot Joystick	S		S	
	Electro Hydraulic (EHC)		S		S
Filtration:	Single Element Return (3 mic)	S	S		
	Two Dual Element Return (3 mic)			S	S
	Bypass Indicators	S	S	S	S
	Oil Reservoir Heater	O	O	O	O
Serviceability:	Diagnostic Nipples @ Pump	S	S	S	S
Cylinders: (Bore X Rod)	Main	6 x 4	6 x 4	6 x 4	6 x 4
	Stick	6 x 4	6 x 4	7 x 4	7 x 4
	Live Heel			6 x 4	6 x 4
<b>Booms</b>					
	7.6 m (25') Knuckleboom	O	O		
	8.2 m (27') Knuckleboom	S	S		
	9.1 m (30') Knuckleboom	O	O		
	9.9 m (32'6") Knuckleboom			S	S
	10.2 m (33'6") Live Heel Boom			O	O
	10.9 m (36') Knuckleboom			O	O
Grapple Mounting Knuckle:	22.8 cm (9") Length	S	S	S	S
	30.5 cm (12") Length	O	O	O	O
Heels:	Single "V" Heel	O	O	O	O
	Double "VV" Heel	O	O	O	O
<b>Structural</b>					
Cab: 96.5 cm x 142.2 cm	Right Side Mounted	S			
(38" x 56")	Left Side Mounted			S	
	Reverse Slope Windshield	S		S	
	Tinted Safety Glass	S		S	
	Lexan Skylight	S		S	
	Sun Visor	S		S	
	Adjustable Seat with Armrests	S		S	
	Operator Protection Guard	S		S	
	Pressurized Cab with Heater	S		S	
	Air Conditioner	O		O	
	Analog Gauges	S		S	
	Electronic Gauges	S		S	
	Horn	S		S	
	Windshield Wiper/Washer	S		S	
	Defroster Fan	S		S	
	Lighter	S		S	
	Dome Light	S		S	
	Control Panel	S		S	
	Circuit Breaker Panel	S		S	
Swing Bearing:	Diameter	109.2 cm (43") OD	109.2 cm (43") OD	137.2 cm (54") OD	137.2 cm (54") OD
	Gearing	External	External	External	External
Mounting:	Steel	S	S	S	S
	Concrete	O	O	O	O
	30" Subframe Riser	O	O	O	O
<b>Capacities</b>					
	Reservoir (Gallons)	42	42	125	125
<b>Unit Weight</b>	kg	7218.9	6946.7	8593.3	8321.1
	lbs	15,915	15,315	18,945	18,345

S = Standard  
O = Optional

# Caterpillar® 519 and 569 Stationary Mount Loader

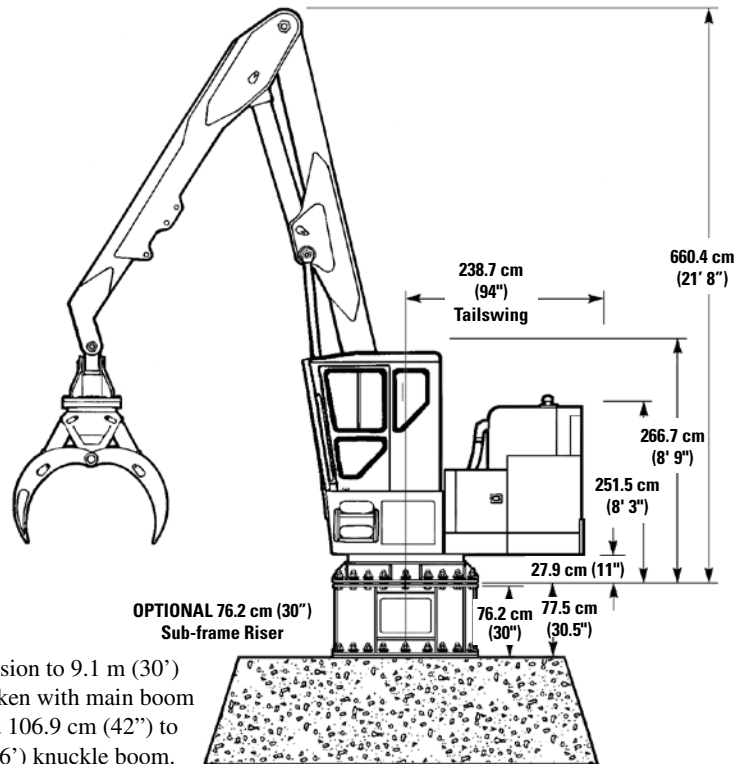
## Basic Dimensions



### 519 SM

**NOTE:** Overall Height dimension to 8.2 m (27') boom articulation point is taken with main boom cylinder fully extended. Add 76.2 cm (30") to this dimension for 9.1 m (30') knuckle boom.

- Operator's cab is not present on EHC models.
- EHC models available with Turntable or Remote Power.
- Installations on concrete include "J" Bolts in lieu of Mounting Bolt.



### 569 SM

**NOTE:** Overall Height dimension to 9.1 m (30') boom articulation point is taken with main boom cylinder fully extended. Add 106.9 cm (42") to this dimension for 10.9 m (36') knuckle boom.

CAT, CATERPILLAR, their respective logos, "Caterpillar Yellow" and the POWER EDGE trade dress, as well as corporate and product identity used herein, are trademarks of Caterpillar and may not be used without permission.

For more complete information on CAT products, dealer services, and industry solutions, visit us on the web at: [www.cat.com](http://www.cat.com) and [www.forestrypro.com](http://www.forestrypro.com)

©2008  
 All Rights Reserved  
 Printed in the USA  
 Order Form # CATSMLDR(04-08)

Materials and specifications are subject to change without notice. Featured machines in photos may include additional equipment. See your Caterpillar dealer for available options.

