

541/551/552

Track Feller Bunchers &
Track Harvesters - FTS (Full Tail Swing)

CATERPILLAR®



541/551/552

Engine Model

Cat® C9 ACERT™ Tier II

Gross Power @ 1800 rpm

305 hp / 227.4 kW

Operating weights (w/o head):

541	30191 kg / 66560 lb*	30512 kg / 67267 lb**	30499 kg / 67239 lb***
551	31057 kg / 68468 lb*	31377 kg / 69175 lb**	31365 kg / 69147 lb***
552	35680 kg / 78660 lb*	36000 kg / 79367 lb**	35988 kg / 79339 lb***

* Track Feller Bunchers (Standard Linkage)

** Track Harvesters

*** Track Feller Bunchers (Long Felling Linkage)

Cat® 541/551/552 Track Feller Buncher/Track Harvester

Power Train

The Cat® C9 ACERT™ Tier II high torque engine provides excellent power, fuel economy, serviceability and durability. With 5% greater fuel efficiency than its predecessor, and meeting the Tier II emission standards, the Cat C9 ACERT is a dependable performer.

Hydraulics

Closed Center hydraulic system with electronic programmable controls that produces excellent multi-function capability; dedicated saw pump.

Operator Comfort

The Cat 500 Series has a purpose built forestry cab with heavy-duty guarding, meeting FOPS/ROPS/OPS requirements. Designed with operator friendly controls and ergonomics, the cab gives excellent front, side and rear visibility. Isolation mounted cab and engine reduce sound levels and vibration for quiet and comfortable operation.

Leveling System

The most reliable tilt mechanism in the industry provides stability and productivity even in the steepest applications on the 552 model.

Undercarriage

Cat track machines feature a rugged undercarriage custom designed for reliable operation in tough harvesting conditions, from wet bottomlands to steep rocky slopes.

Contents

Powertrain.....	3
Hydraulic Packages.....	4
Operator Comfort.....	5
Leveling System.....	6
Undercarriage.....	7
Boom and Stick.....	8
Owning and Operating Costs.....	9
Serviceability.....	10
Customer Focus.....	11
Cat 541/551/552 Specifications.....	12
Standard and Optional Equipment.....	18



Versatility

Cat machines are available with factory-installed felling heads to meet your application needs. Cat 500 series machines utilize high pressure hydraulics and proven components. All models are available with hot saw, intermittent or harvesting linkage fronts.

Serviceability

The hydraulically actuated clam-shell service doors provide full service access to daily service points simplifying maintenance. Regularly scheduled maintenance extends machine service life and lowers overall operating costs.

ForestPro Consulting

Cat's ForestPro Consulting Services provide application consulting, training, market development and leading forestry system solutions to meet dealer and customer needs.

A robust, reliable undercarriage utilizes proven components, customized for the most rugged forestry conditions. The unique boom design provides industry leading lift capacity throughout full reach range, a benefit in large timber.

Three models are available with just the right horsepower, track size and hydraulic configurations to fit your application needs.

Boom and Stick

Harvester and Feller Buncher Linkage Arrangements are available for all models. All boom and stick structures are stress relieved for extended service life.

Owning and Operating Costs

Proven fuel efficiency combined with easier access and extended service intervals maximize uptime, reduce operating costs and maximize productivity.

Customer Focus

Your Cat dealer offers a wide range of services that can be set up to meet your equipment needs. The dealer will help you choose a plan that can cover everything from machine and attachment selection, service and maintenance, to replacement.

Powertrain

Built for power, reliability, low maintenance, excellent fuel economy and low emissions.

Powerful Performance

The Cat® C9 electronically controlled ACERT delivers power while meeting all current Tier II emission standards. All models contain a fuel/water separator, engine air intake heater and a dual-stage combination air cleaner with pre-cleaner.

High Capacity Cooling System

The side-by-side radiator/oil cooler gives excellent cooling capacity for high production bunching and harvesting. On-demand Flexxaire™ fan activates only when required and allows the cooling fan to purge debris from the radiator area, keeping a cleaner cooling system. The IQAN control system infinitely controls blade pitch angle to reduce horsepower demand from the cooling package, and lower operating costs.

Engine Oil

Caterpillar engine oil is formulated to optimize engine life and performance and is recommended for use in Cat diesel engines. The engine oil change interval has been increased to 500 hours.

Service

The clamshell engine compartment provides easy access to oil filters, oil dipstick, hydraulic fill pump and hoses reducing maintenance time.

Low Exhaust Emissions

The Cat C9 ACERT engine is a low emission engine designed to meet US EPA off-road Tier II emission regulations.



Hydraulic Packages

Powerful hydraulic system combined with a powerful boom and stick maximize productivity in any felling or harvesting job.

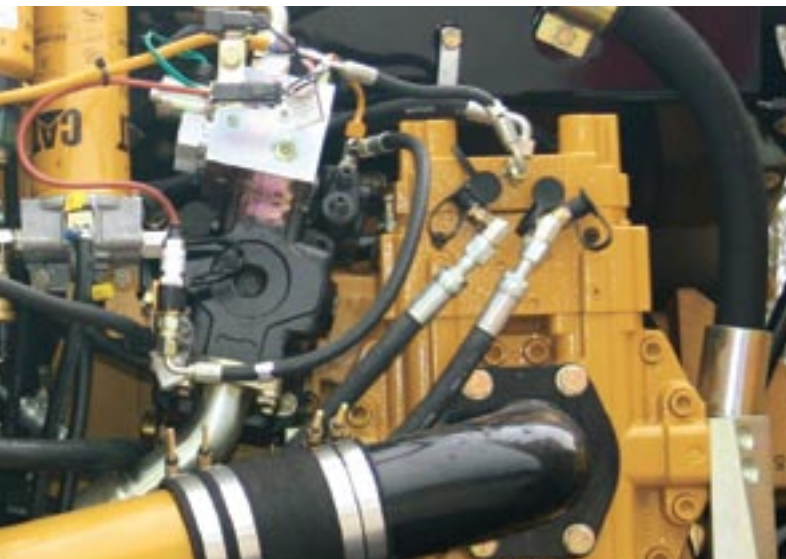


Electric Hydraulic Oil fill Pump

The hydraulic oil site gauge provides easy visibility to know when hydraulic oil needs to be added. An easy accessible service wand allows hydraulic oil to be pumped through the hydraulic filtering system and into the tank. This reduces maintenance down time and helps to maintain oil cleanliness requirements.

Variable Displacement Pump

All Cat® 500 series FTS Track Feller Bunchers are equipped with 200 cc variable displacement pump for travel, a 200 cc boom and implement functions, and a dedicated 55 cc variable displacement pump for felling attachments. Optional hydraulics for dangle harvesting or processor heads and intermittent saw heads are available for all models.



Caterpillar® Hydraulic Oil

Provides maximum protection against mechanical and corrosive wear in all hydraulic systems. It's high zinc content reduces wear, and extends pump life. Provided certain requirements are met (e.g. S-O-SSM analysis every 500 hours), the hydraulic oil change interval is extended from 2,000 hours to 4,000 hours.

Biodegradable Hydraulic Oil

The optional biodegradable hydraulic oil (HEES) is formulated to provide excellent high-pressure and high-temperature characteristics and is fully compatible with the all hydraulic components. HEES is fully decomposed by soil or water microorganisms, providing a more environmentally-sound alternative to mineral-based oils.



ToughGuard Hoses™

Abrasion resistant hoses along the boom and stick provide strength and flexibility. The ToughGuard cover consists of a thin layer of UHMW polyethylene bonded to the rubber cover, providing exceptional abrasion resistance. In many applications, it eliminates the need for external guarding.

Operator Comfort

The interior layout maximizes operator space, provides exceptional comfort and reduces operator fatigue.



Viewing

Cab design optimizes post structures and window placement to provide excellent operator visibility to front, sides and rear. Standard 1.25" thick "Margard" front window maximizes operator protection. All purpose built forestry cabs are designed with heavy-duty guarding, meeting FOPS/ROPS/OPS requirements.

Fresh Air

Large sliding side window with screen to allow fresh air into cab.



Interior Operator Station

The operator station is quiet with conveniently placed controls, joysticks and an ergonomically designed seat reducing operator fatigue.



Quiet Operation

Isolation mounted cab and engine reduces sound levels and vibration for quiet and comfortable operation.

Large Storage Compartment

A large storage space behind the seat, provides sufficient room for a lunch box, hard hats and work tools.

IQAN

IQAN display allows the operator to continuously monitor the operating systems of the machine. This provides early warning for potential problems, and allows the operator to adjust control parameters maximizing performance and productivity.



Control Convenience

Each control is placed within easy reach of the operator. Joysticks control the implement and attachment functions, providing easy operation.



Foot Pedals

Ergonomically located pedals with side-by-side foot rests provide for maximum operator comfort while operating machine travel.



Skylight

A unique large polycarbonate skylight provides excellent upward visibility, and acts as an alternate escape hatch.



Electrical System

24-volt electrical system with in-cab 24-12 volt converter, dual in-cab 12 volt power points and one 24 volt power point. Power is provided by two 12 volt maintenance free batteries and 95 amp alternator. An optional cold weather starting attachment may be selected to provide two additional batteries, a HD starter, and HD cables.

Leveling System

Tilting mechanism provides stability and comfort in steep slope conditions.



Tilt Mechanism

With the most robust tilt mechanism in the industry, the FTS 552 tilter has a patented 3-cylinder tilt mechanism with simultaneous tilting forward and side-to-side. Trunion cylinders are mounted on 2" (51 mm) steel plates and transfer vertical loads down to the interface of the track frames and carbody, putting the load into the track and ground.

Cylinders

Three-cylinder tilt mechanism with simultaneously 20 degree forward tilt and 11 degree side-to-side tilt.



Ground Clearance

FTS machines have excellent ground clearance and open carbody design. This provides increased mobility by eliminating debris interference and other obstacles encountered in rugged working conditions.

Undercarriage

High quality custom engineered, heavy duty forestry undercarriage.

Reliable

Precision welded, high-wide carbody has strong frames that reduce flexing and increase reliability of rollers and track links throughout the life of the machine. Nine bottom rollers per side.

Travel Motor

Proven final drives and travel motors provide up to 104,000 lb (47174 kg) of tractive effort on the 552 giving excellent traction and power to the ground.

Track Guards

All models contain bolt-on track guards.

Carbody

Leveling 552 model features a bolted track frame to carbody design. This provides a standard gauge width, or allows adjustment to a wide gauge width to improve machine stability, and increase productivity on steep slope applications.



Boom and Stick

Designed for maximum reach and lift capacity.



With up to 21,800 lbs (9400 kg) of bare pin lift capacity at 21.5' (6.6 m) on the 552 track feller buncher (with the standard linkage), the 500 series machines are dominant over competitors in their size classes. With market leading lift capacity, 28.8' (8.6 m) of reach, and tight stick tuck-in capabilities, these machines deliver high performance felling in all applications. The 552 track harvester delivers the same high performance with 12,500 lbs (5700 kg) of bare pin lift capacity and 37' (11.3 m) of maximum reach, while the 552 long felling linkage delivers 16,900 lbs (7700 kg) of bare pin lift capacity at 32' (9.7 m).

Versatility

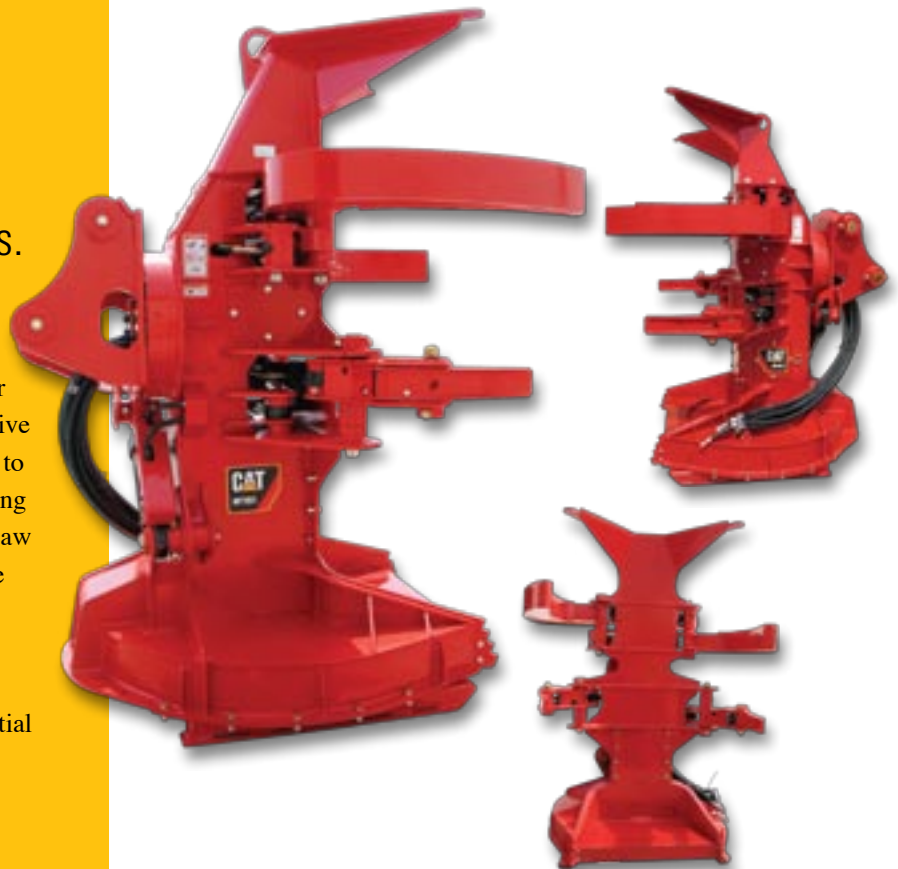
Caterpillar® disc saw attachments are available to meet felling needs.

Attachments

From plantation thinning to select cut of large diameter wood, Cat felling attachments provide reliable productive felling solutions. These range in cut capacity from 22" to 24". Designed to allow maximum visibility of the cutting area, all saws utilize high pressure hydraulics for fast saw recovery and quick arm speed. This provides a positive impact on production and better tree control.

Tilt

All models are available with a standard 40 degree partial lateral tilt, or an optional 220 degree full lateral tilt.



Owning and Operating Costs

Cat® 500 Series Track Feller Bunchers and Track Harvesters provide the best value for your operation.

ACERT Technology Fuel Economy.

Based on Caterpillar® testing, the fuel economy of Cat® engines with ACERT technology is 3 to 5 percent better than current competing technologies. This fuel economy is directly related to the complete combustion of fuel due to the integration between the electronic control that monitors conditions, the air management system that controls air volume and the fuel injection system that delivers just the right amount of fuel as needed.



Clam-Shell Service Doors

The hydraulically actuated clam-shell service doors provide easy and quick access reducing machine maintenance time. Less service time means less down time, more work time and greater productivity.



Serviceability

Extended Service intervals and easy access reduce operating costs.



Extended Service Intervals

Caterpillar® service and maintenance intervals have been extended to reduce machine service time, increase machine availability and reduce operating costs. Hydraulic oil change intervals can be extended from 2,000 hours to 4,000 hours. Engine coolant change intervals are 12,000 hour with Cat Extended Life Coolant/Anti-freeze. Regularly scheduled maintenance extends machine service life and lowers overall operating costs. 500-hour oil change interval reduces overall maintenance costs.

Flexxaire™ Fan

Standard Flexxaire fan operates only when required and allows the cooling fan to purge debris from the radiator area, reducing cleaning maintenance time.



Clam-Shell Service Doors

The hydraulically actuated clam-shell service doors provide easy and quick access reducing maintenance down time.

Customer Focus

Cat® dealer services help you operate longer with lower costs.

Product Support

Your Cat® dealer will help provide you with parts quickly and efficiently by utilizing the Cat worldwide dealer network parts system, minimizing downtime.

Machine Selections

Make detailed comparisons of the machines you are considering before you buy. What are job requirements, machine attachments and operating hours? What production is needed? Your Cat dealer can provide recommendations.

Purchase

Look past the initial price. Consider the financing options available as well as day-to-day operating costs. This is also the time to look at dealer services that can be included in the cost of the machine to yield lower equipment owning and operating costs over the long run.

Customer Support Agreements

Cat dealers offer a wide variety of product support agreements, and work with customers to develop a plan that best meets specific needs. These plans can help protect your investment.

Operation

Improving operating techniques can boost your profits. The Cat Forest Products Consulting Services Group offers certified operator training classes to help maximize the return on your machine investment.

Maintenance Services

Repair option programs guarantee the cost of repairs up front. Diagnostic programs such as S-O-SSM Analysis and Coolant Sampling and Technical Analysis help avoid unscheduled repairs.

Replacement

Repair, rebuild or replace? Your Cat dealer can help you evaluate the cost involved so you can make the right choice.



CAT® 541/551/552 Specifications

Powertrain

Engine Model	Cat C9 ACERT
Gross Power @ 1800 RPM	227.4 kW / 305 hp
Rated Power@ 2100 RPM	210.3 kW / 282 hp
Displacement	537 in3 / 8.8 L

Operating Weights (w/o heads)*

541	30191 kg / 66560 lb
551	31057 kg / 68468 lb
552	35680 kg / 78660 lb

Operating Weights (w/o heads)**

541	30512 kg / 67267 lb
551	31377 kg / 69175 lb
552	36000 kg / 79367 lb

Operating Weights (w/o heads)***

541	30499 kg / 67239 lb
551	31365 kg / 69147 lb
552	35988 kg / 79339 lb

Boom System

Max. Reach (w/ head)*	8.6 m / 28 ft 1 in
Max. Reach (w/ head)**	11.3 m / 37 ft
Bare Pin Lift @ Max Reach (w/o head)*	9400 kg / 21800 lb @ 21.5 ft / 6.6 m
Bare Pin Lift @ Max Reach (w/o head)**	
541	4300 kg / 9500 lb @ 35 ft / 10.7 m (541)
551	5000 kg / 11000 lb @ 35 ft / 10.7 m (551)
552	5700 kg / 12500 lb @ 35 ft / 10.7 m (552)
Bare Pin Lift @ Max Reach (w/o head)***	
541	6400 kg / 14200 lb @ 27 ft / 8.2 m (541)
551	7400 kg / 16300 lb @ 27 ft / 8.2 m (551)
552	7700 kg / 16900 lb @ 27 ft / 8.2 m (552)

* Track Feller Buncher (Standard Linkage) – Lift over front of tracks

** Track Harvester Configuration – Lift over front of tracks

*** Track Feller Buncher (Long Felling Linkage) – Lift over front of tracks

Service Refill Capacities

Fuel Capacity	312 US gal / 1181 L
Cooling System	16.1 US gal / 61 L
Engine Oil	10.3 US gal / 39 L
Hydraulic Tank	85.3 US gal / 323 L
Hydraulic System	97.7 US gal / 370 L
Swing Drive	2.6 US gal / 10 L

Hydraulic System

Electric hydraulic oil fill pump

Dedicated 110 gpm variable displacement pump for travel functions

Dedicated 110 gpm variable displacement pump for boom and implement functions

Dedicated 30 gpm variable displacement pump for saw motor

Undercarriage (size/pitch)

541	330 HEX / 8.5 in (215.9 mm)
551/552	345 HEX / 8.5 in (215.9 mm)

Track Gauge

541/551/552	102 in – 113 in / 2591 mm – 2870 mm
-------------	-------------------------------------

Track Length

541	192.6 in / 4893 mm
551/552	193 in / 4903 mm

Ground Clearance

541/551/552	35 in / 889 mm
-------------	----------------

Tractive Effort

541	34246 kg / 75500 lb
551	47174 kg / 104,000 lb
552	47174 kg / 104,000 lb

Nine bottom rollers per side

Bolt-on track guards

Non-leveling carbody – 541 / 551

Three-cylinder tilt mechanism w/ simultaneous 20 degree forward tilt and 11 degree side-to-side tilt – 552

Standards

Cab meets FOPS/OPS/ROPS requirements

Caterpillar® FTS Track Harvesters Shipping Dimensions

MODEL	Length	Height*	Width 1+	Width 2++	Weight
541	536 in (13614 mm)	140 in (3556 mm)	131 in (3327 mm)	142 in (3607 mm)	67,267 lb / 30512 kg
551	536 in (13614 mm)	144 in (3658mm)	131 in (3327 mm)	142 in (3607 mm)	69,175 lb / 31377 kg
552	276 in (7010 mm)	156 in (3962 mm)	131 in (3327 mm)	142 in (3607 mm)	79,367 lb / 36000 kg

(boom tucked)

Length, Height and Width assume 28 in (711 mm) SG shoes

* Height to top of cab w/ standard skylight

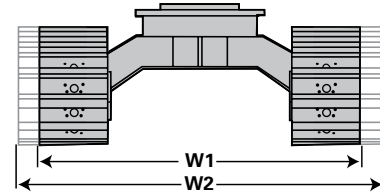
+ Width 1 is minimum width

++ Width 2 is maximum width when undercarriage is set wide

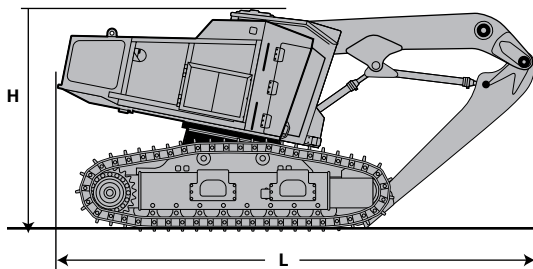
All 541/551/552 TFB models are shipped in the maximum width configuration using Width 2++ dimension.

These illustrations and values are ESTIMATED for TRUCK SHIPMENT ONLY FROM THE FACTORY.

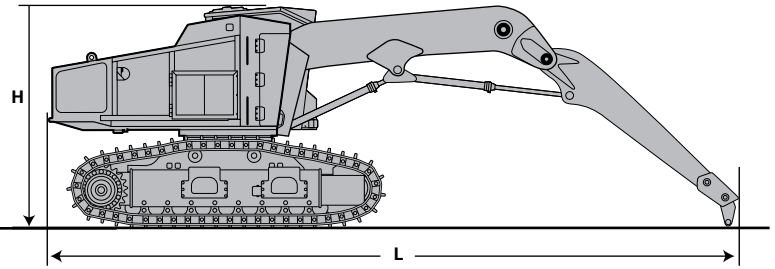
These are subject to change based on attachments, configurations, add-ons, etc.



552 (Tilter) Track Harvester



541/551 (Non-Tilter) FTS Track Harvester



Caterpillar® FTS Track Feller Bunchers Shipping Dimensions

MODEL	Length	Height **	Width 1+	Width 2++	Weight
541	371 in (9423 mm)	140 in (3556 mm)	131 in (3327 mm)	142 in (3607 mm)	66,560 lb (30191 kg)
541*	461 in (11709 mm)	140 in (3556 mm)	131 in (3327 mm)	142 in (3607 mm)	74,119 lb (33627 kg)
551	371 in (9423 mm)	144 in (3658 mm)	131 in (3327 mm)	142 in (3607 mm)	68,468 lb (31057 kg)
551*	461 in (11709 mm)	144 in (3658 mm)	131 in (3327 mm)	142 in (3607 mm)	76,027 lb (34493 kg)
552	371 in (9423 mm)	156 in (3962 mm)	131 in (3327 mm)	142 in (3607 mm)	78,660 lb (35680 kg)
552 *	461 in (11709 mm)	156 in (3962 mm)	131 in (3327 mm)	142 in (3607 mm)	86,219 lb (39116 kg)
552	276 in (7010 mm)	156 in (3962 mm)	131 in (3327 mm)	142 in (3607 mm)	78,660 lb (35680 kg)

(boom tucked)

Length, Height and Width assume 28 in (711 mm) SG shoes

* w/ HF 221 Partial Tilt Felling Head, tilted back and lifted
(assumes an estimated additional head weight of 7559 lb (3436 kg))

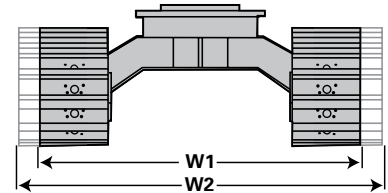
** Height to top of cab w/ standard skylight

+ Width 1 is minimum width

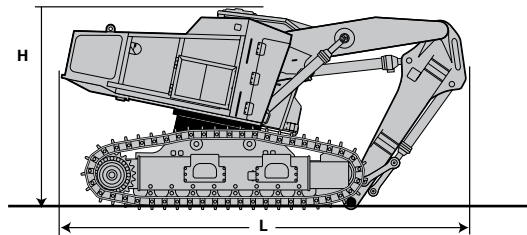
++ Width 2 is maximum width when undercarriage is set wide

All 541/551/552 TFB models are shipped in the maximum width configuration using Width 2++ dimension.
These illustrations and values are ESTIMATED for TRUCK SHIPMENT ONLY FROM THE FACTORY.

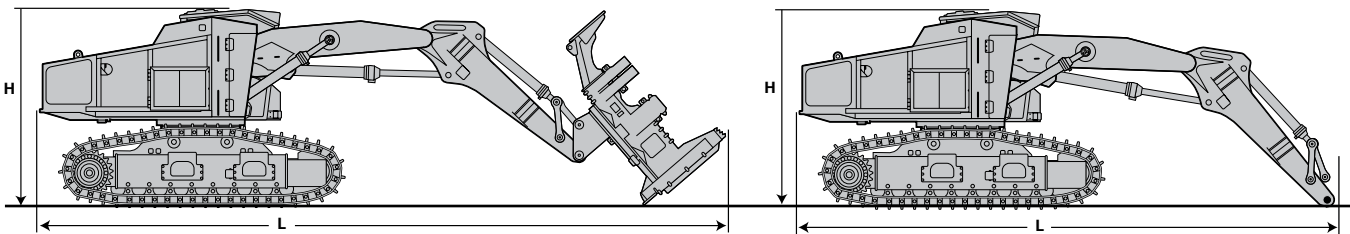
These are subject to change based on attachments, configurations, add-ons, etc.



Tilter 552 Track Feller Buncher (Tilter) Standard Linkage



541/551 (Non-Tilter) 752 (Tilter) Standard Linkage



Caterpillar® FTS Track Feller Bunchers Shipping Dimensions

MODEL	Length	Height **	Width 1+	Width 2++	Weight
541	436 in (11074 mm)	140 in (3556 mm)	131 in (3327 mm)	142 in (3607 mm)	67,239 lb (30499 kg)
541*	526 in (13360 mm)	140 in (3556 mm)	131 in (3327 mm)	142 in (3607 mm)	74,798 lb (33935 kg)
551	436 in (11074 mm)	144 in (3658 mm)	131 in (3327 mm)	142 in (3607 mm)	69,147 lb (31365 kg)
551*	526 in (13360 mm)	144 in (3658 mm)	131 in (3327 mm)	142 in (3607 mm)	76,706 lb (34801 kg)
552	434 in (11024 mm)	156 in (3962 mm)	131 in (3327 mm)	142 in (3607 mm)	79,339 lb (35988 kg)
552 *	524 in (13310 mm)	156 in (3962 mm)	131 in (3327 mm)	142 in (3607 mm)	86,898 lb (39424 kg)

Length, Height and Width assume 28 in (711 mm) SG shoes

* w/ HF 221 Partial Tilt Felling Head, tilted back and lifted (assumes an estimated additional head weight of 7559 lb (3436 kg)

** Height to top of cab w/ standard skylight

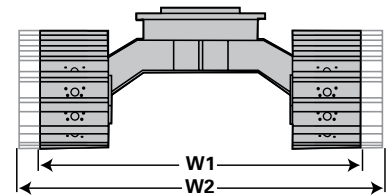
+ Width 1 is minimum width

++ Width 2 is maximum width when undercarriage is set wide

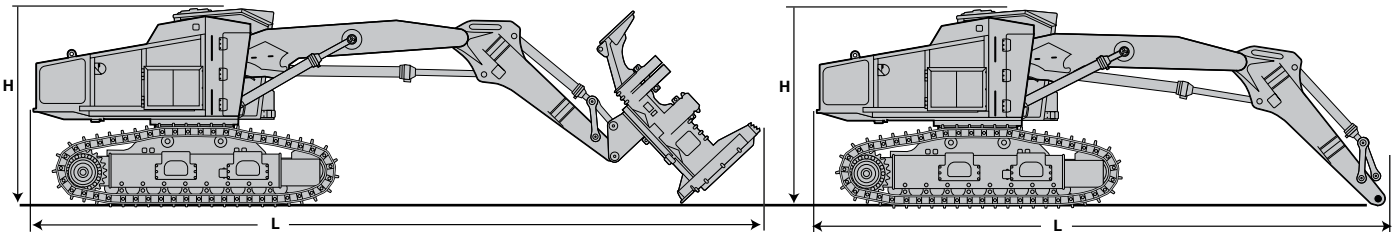
All 541/551/552 TFB models are shipped in the maximum width configuration using Width 2++ dimension.

These illustrations and values are ESTIMATED for TRUCK SHIPMENT ONLY FROM THE FACTORY.

These are subject to change based on attachments, configurations, add-ons, etc.

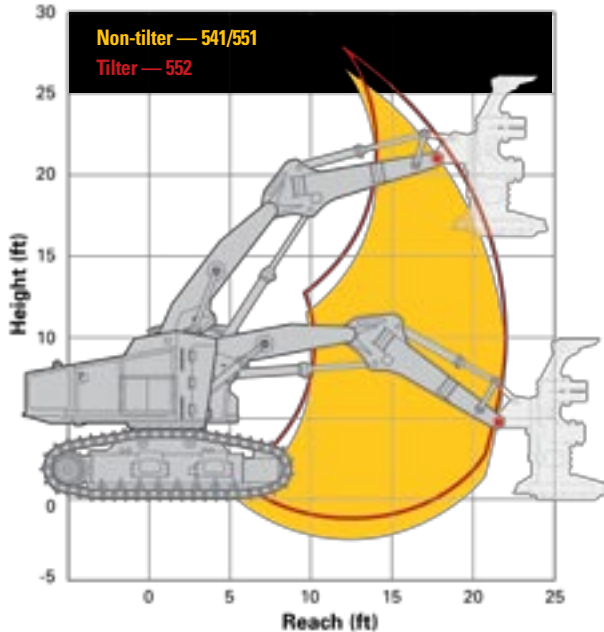


541/551 (Non-Tilter) 552 (Tilter) Long Felling Linkage



FTS Track Feller Bunchers & Track Harvesters – Range Diagrams

Lift Range Information - Standard Felling Linkage 541/551/552 - FTS



Lift Over Front of Tracks

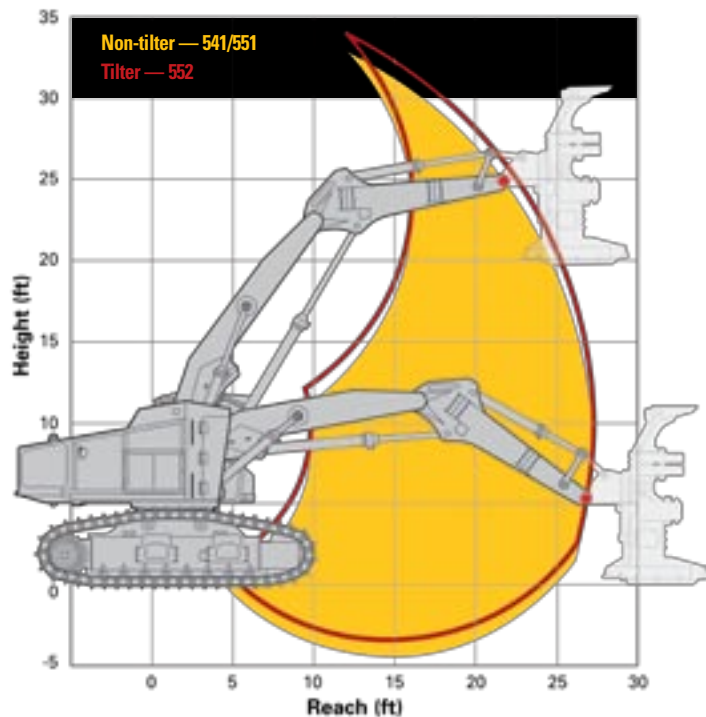
MODEL	541	551	552
Reach	Lift Capacity	Lift Capacity	Lift Capacity
3.2 m / 10.5 ft	21600 kg / 47700 lb	21800 kg / 48000 lb	22200 kg / 49000 lb
4.5 m / 15 ft	15200 kg / 33500 lb	15300 kg / 33700 lb	15500 kg / 34200 lb
6.6 m / 21.5 ft	9400 kg / 21800 lb	9400 kg / 21800 lb	9400 kg / 21800 lb

Lift Over Side of Tracks

MODEL	541	551	552
Reach	Lift Capacity	Lift Capacity	Lift Capacity
3.2 m / 10.5 ft	19400 kg / 42800 lb	21800 kg / 48000 lb	22200 kg / 49000 lb
4.5 m / 15 ft	10600 kg / 23400 lb	13200 kg / 29100 lb	14900 kg / 32900 lb
6.6 m / 21.5 ft	6100 kg / 13500 lb	7600 kg / 16700 lb	8600 kg / 19000 lb

Note: Lift Capacity shown without attachment.
Additional reach and attachment weight will reduce lift capacity.

Lift Range Information - Long Felling Linkage 541/551/552 - FTS



Lift Over Front of Tracks

MODEL	541	551	552
Reach	Lift Capacity	Lift Capacity	Lift Capacity
3.0 m / 10 ft	20800 kg / 45900 lb	21000 kg / 46400 lb	21800 kg / 48000 lb
6.1 m / 20 ft	10400 kg / 22900 lb	10700 kg / 23500 lb	10900 kg / 23900 lb
8.2 m / 27 ft	6400 kg / 14200 lb	7400 kg / 16300 lb	7700 kg / 16900 lb

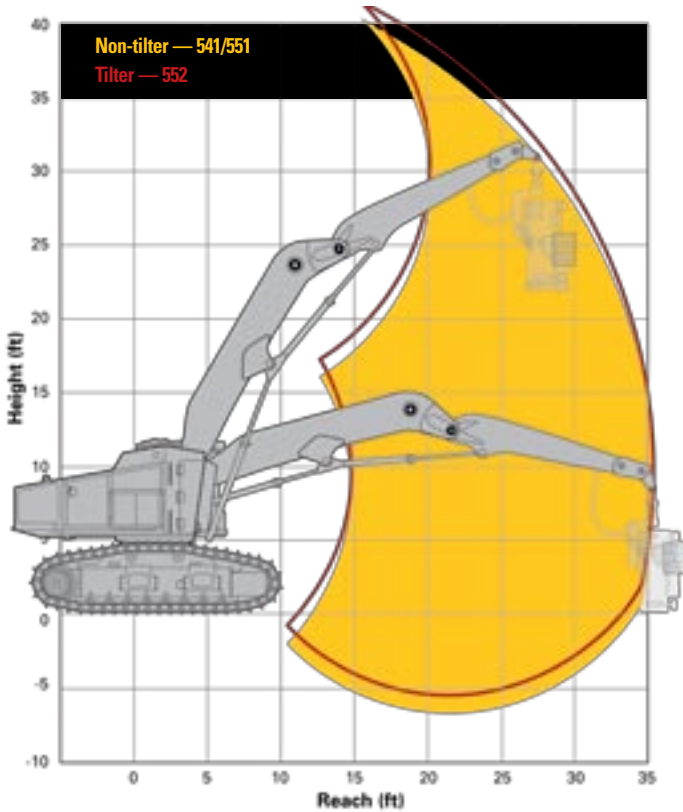
Lift Over Side of Tracks

MODEL	541	551	552
Reach	Lift Capacity	Lift Capacity	Lift Capacity
3.0 m / 10 ft	20800 kg / 45900 lb	21000 kg / 46400 lb	21800 kg / 48000 lb
6.1 m / 20 ft	6600 kg / 14600 lb	8200 kg / 18100 lb	9300 kg / 20600 lb
8.2 m / 27 ft	4100 kg / 9100 lb	5200 kg / 11400 lb	6000 kg / 13100 lb

Note: Lift Capacity shown without attachment.
Additional reach and attachment weight will reduce lift capacity.

FTS Track Feller Bunchers & Track Harvesters – Range Diagrams

Lift Range Information - Harvesting Linkage 541/551/552 - FTS



Lift Over Front of Tracks

MODEL	541	551	552
Reach	Lift Capacity	Lift Capacity	Lift Capacity
4.5 m / 15 ft	9100 kg / 20200 lb	9100 kg / 20200 lb	9100 kg / 20200 lb
7.6 m / 25 ft	7100 kg / 15700 lb	8200 kg / 18100 lb	9400 kg / 20600 lb
10.7 m / 35 ft	4300 kg / 9500 lb	5000 kg / 11000 lb	5700 kg / 12500 lb

Lift Over Side of Tracks

MODEL	541	551	552
Reach	Lift Capacity	Lift Capacity	Lift Capacity
4.5 m / 15 ft	9100 kg / 20200 lb	9100 kg / 20200 lb	9100 kg / 20200 lb
7.6 m / 25 ft	4500 kg / 9900 lb	5700 kg / 12500 lb	6500 kg / 14300 lb
10.7 m / 35 ft	2700 kg / 5900 lb	3400 kg / 7600 lb	4000 kg / 8800 lb

Note: Lift Capacity shown without attachment.
Additional reach and attachment weight will reduce lift capacity.

Standard equipment may vary. Consult your Caterpillar® dealer for details.

ELECTRICAL

24-volt electrical system
2-12 volt maintenance free batteries
95 Amp alternator
IQAN programmable controls
MDL large screen display

GUARDS

Twin hydraulically actuated hinged engine enclosure with warning alarm
Engine fan guard
Bottom guards
Isolation mounted cab and engine
Heavy duty radiator guard door

OPERATOR ENVIRONMENT

OPS/FOPS/ROPS cab
Dual joystick control
Reverse slope windshield
Air ride seat
Skylight - alternate escape hatch
Top escape hatch
3 inch retractable seat belt
Heater/air conditioner w/climate control
DIN mount radio ready with speakers
Operator sound suppression to standards
Travel alarm
Cup holders (2)
2-12 volt and 1-24 volt power outlets
Front Window, 1.25 in Thick Margard

POWERTRAIN

C9 ACERT engine meets Tier II emissions requirements
Infinitely variable travel speed
Under hood centrifugal precleaner and primary air filter
Heavy-duty cooling package

- Aluminum core ATAAC and side-by-side radiator and oil cooler
- Removable debris screen
- Swing out A/C condenser
- 43C ambient temperature capable

Electric fuel priming pump

UNDERCARRIAGE

Track roller guards with access holes
Hydraulic track adjusters
Double flange bottom rollers
Caterpillar® 330 HEX bolted, non-leveling carbody, variable gauge
GFT 80 final drives (541)
Caterpillar 345 undercarriage bolted, variable gauge non-leveling carbody, GFT 110 final drives (551)
Caterpillar 345 undercarriage bolted, variable gauge leveling carbody, GFT 110 final drives (552)

OTHER STANDARD EQUIPMENT

Vandalism protection
Spare hose storage area
Grease gun bracket and storage area
Flexxaire™ Fan
Fuel water separator
312 US gallon fuel tank

HYDRAULICS

Dedicated fixed displacement pilot pump
Dedicated variable displacement pumps for track and implement functions
30 gpm variable displacement saw pump
Cat® 325C swing drive and swing motor
Electric hydraulic oil fill pump
84 US gal hydraulic tank

ANTIFREEZE

50% concentration extended life coolant

Optional equipment may vary. Consult your Caterpillar® dealer for details.

TRACK SYSTEMS

24" SG pads, clipped corners, with mud/snow reliefs

28" SG pads, clipped corners, with mud/snow reliefs

28" DG pads, with mud/snow reliefs (541)

Star carrier Rollers

OTHER EQUIPMENT

Starting Aid, Cold Weather

Starting Aid, Arctic - Includes engine and hydraulic heaters

FIELD INSTALLED ATTACHMENTS

CD Player with AM/FM Stereo – remote capable

Skylight, peaked, removable

Loose Linkage Arrangements

CAT® 541/551/552 Track Feller Bunchers & Track Harvesters - FTS (Full Tail Swing)

For more complete information on Cat® products, dealer services, and industry solutions, visit us on the web at www.cat.com/forestry

© 2009 Caterpillar Inc.
All rights reserved

Materials and specifications are subject to change without notice. Featured machines may include additional equipment. See your Caterpillar® dealer for available options.

CAT, CATERPILLAR, SAFETY.CAT.COM, their respective logos, "Caterpillar Yellow" and the POWER EDGE trade dress, as well as corporate and product identity used herein, are trademarks of Caterpillar and may not be used without permission.

CATFTS(01-09)

CATERPILLAR®
TODAY'S WORK. TOMORROW'S WORLD.™