

325D, 330D 345C, 385C

Long Reach Excavation



	325D	330D	345C	385C
Cat® Engines with ACERT™ Technology	C7	C9	C13	C18
Net Power (ISO 9249) at 1800 rpm	140 kW (190 hp)	200 kW (270 hp)	239 kW (325 hp)	390 kW (530 hp)
Operating Weight	32.2–33.6 mt	38.4–40.0 mt	55.4–55.8 mt	88.3–88.5 mt
Maximum Reach (Short/Long)	14.1–15.9 m	15.6–18.0 m	16.2–19.6 m	18.0–21.3 m

325D, 330D, 345C, 385C Long Reach Excavation

Caterpillar® Long Reach Excavation Arrangements have been designed specifically for jobs requiring longer reach than standard excavators, combined with digging capabilities.

Long Reach Excavation (LRE)

Caterpillar Long Reach Excavation machines are ideally suited for applications such as deep or long distance digging in sand or gravel pits (replacing draglines), slope forming, cleaning of settling banks and ponds, drainage, etc. These excavators can feed directly into a hopper or load a truck.

Long Reach Excavation Attachments

Caterpillar offers a wide variety of buckets for its Long Reach Excavation product range.

Upper Frame and Counterweight

The heavy-duty upper frame guarantees durability and resistance to handle increased loads and movements generated by the demanding long reach application. A heavier counterweight balances the swing bearing and provides enhanced stability.

Service and Maintenance

Fast, easy service has been designed in with extended service intervals, advanced filtration, convenient filter access and user-friendly electronic diagnostics for increased productivity and reduced maintenance costs.

Hydraulics

Designed to deliver power and maximum control for long reach excavation jobs. For weed-cutting and tilting buckets, medium pressure circuit, as well as hydraulic lines for the boom and the stick, are available as options.

Undercarriage

The heavy duty and wide undercarriages are stable and durable and provide extra stability over the side.

Complete Customer Service

Your Cat dealer offers a wide range of services that can be set up under a customer support agreement when you purchase your equipment. The dealer will help you choose a plan that can cover everything from machine and attachment selection to replacement.

Booms and Sticks

The Long Reach Excavation booms and sticks are purposely designed, following Caterpillar standards, to provide maximum performance and durability in digging applications with a productive bucket size.

SmartBoom™

The Caterpillar exclusive SmartBoom feature eases the operations by smoothening the movements and accelerating return cycle speed.



Undercarriage

Durable undercarriage absorbs stresses and provides excellent stability.



Heavy Duty High Wide Undercarriage (HDHW) .

The durable Heavy Duty High Wide undercarriages provide very stable and rugged platforms for long reach digging and loading applications.

- The undercarriage is reinforced and has a high ground clearance.
- Thick carbody plates and increased box section height induce increased weight and lift capacities.

Heavy Duty Wide (HDW) Variable Gauge Undercarriage.

The 345C L Heavy Duty Wide variable gauge undercarriage is equipped with the Heavy Duty H-shaped carbody, sealed and lubricated track rollers, carrier rollers and idlers.

Variable Gauge Undercarriage (LVG). The 385C L undercarriage components offer heavy-duty performance and durability. Track rollers, carrier rollers and idlers are sealed and lubricated for excellent service life.

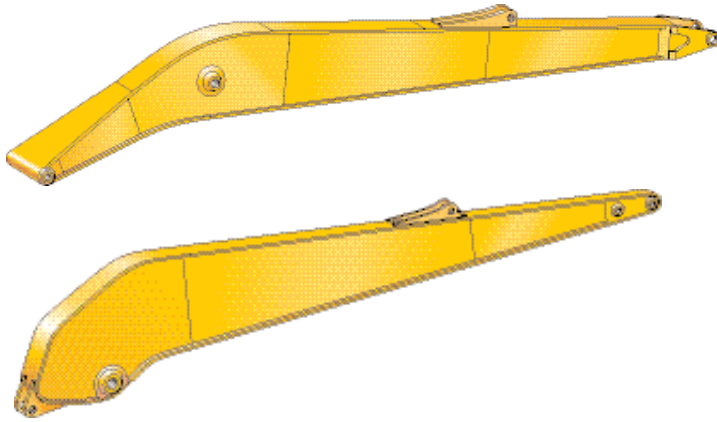
Other undercarriage configurations are also available. Contact your local Caterpillar dealer for details.

- L** 325D and 330D with Long undercarriage
- HDHW** 325D and 330D with Heavy Duty High Wide undercarriage
- HDW** 345C L with Heavy Duty Wide Variable Gauge undercarriage
- LVG** 385C L with Variable Gauge undercarriage



Boom and Stick for Long Reach Excavation

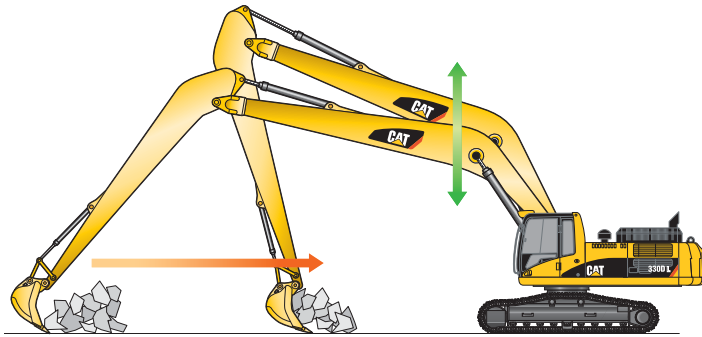
Durable front parts help you get the best out of your machine.



Long Reach Excavation Front Parts. Like all Cat booms and sticks, Caterpillar Long Reach Excavation front parts are built for performance and long service life:

- Finite elements analysis: analyses the design structural stresses and enables optimization of durability and performance.
- Castings and forgings are used at high stress areas such as boom nose, boom foot, boom cylinder and stick foot.
- Internal baffle plates give the structures extra strength and durability to withstand torsional loads.
- Large welded box section structures with thick, multi-plate fabrication are used in high-stress areas.
- The Long Reach Excavation boom and stick are stress relieved, thanks to an in-house heat treatment, to maximize material strength and durability.

Retrofit Front Parts. Long Reach Excavation retrofit front parts provide a maximal versatility to the 330D LRE. A boom hook system gives the opportunity to quickly and easily change the front parts from LRE configuration to reach or straight boom configuration.



SmartBoom™

Scraping rock and finishing work is easy and fast. SmartBoom simplifies the task and allows the operator to fully concentrate on stick and bucket, while boom freely goes up and down without using pump flow. Therefore, less strain is generated on the structures.

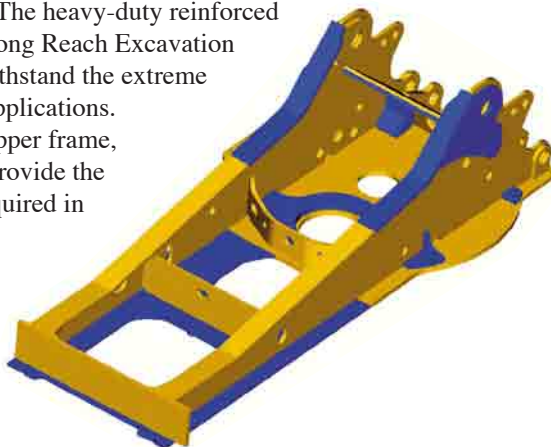
Upper Frame and Counterweight

Purposely designed and built for extreme conditions.

Reinforced Upper Frame. The heavy-duty reinforced upper frames of the Cat Long Reach Excavation models are designed to withstand the extreme load conditions of these applications. Compared to a standard upper frame, several additional plates provide the durability and strength required in these environments.

Counterweight.

A heavier counterweight balances the swing bearing and provides enhanced stability.



Standard



Heavy-duty



Swing Bearing to Upper Frame Bolts.

The swing bearing bolts are 20 mm longer on the back half of upper frame for increased joint retention. Bolt grade is increased from 10.9 to 11.9 for increased bolt torque of swing bearing to upper frame and carbody.

Buckets and Quick Couplers

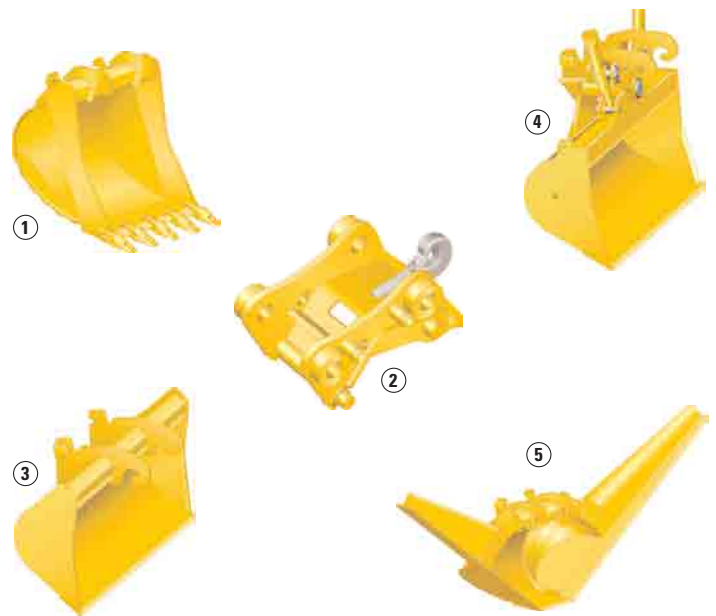
A wide variety of buckets help optimize machine performance.

Purpose designed and built to Caterpillar's high durability standards.



Rationalized Bucket Line. Optimized design matches machine configuration perfectly. Improved balance between performance and durability. Buckets feature the Caterpillar K Series Tooth System.

- 1 Excavation (X).** Digs and loads soft to medium materials such as clay and earth. Features weld on tip adapters, wear resistant steel alloy cutting edge and wear plates, and high grade steel side bars.
- 2 Quick Coupler.** Caterpillar quick couplers enable the operator to simply release one work tool and pick up another. Your hydraulic excavator becomes highly versatile. The dedicated CW-Series quick coupler enables a quick tool exchange while maintaining top machine performance. A lifting hook is added for maximum lift capacity.



Buckets for Special Applications. Choose from a variety of buckets such as ditch cleaning buckets (tiltable) and trapezoidal buckets. Each of these buckets enhances the performance in special applications. Ask your dealer representative to recommend the optimum solution for your material and operation.

- 3 Ditch Cleaning Bucket.** Wide, light duty bucket tailored for long reach configurations to clean waterbeds and banks.
- 4 Tilttable Ditch Cleaning Bucket.** Wide, light duty hydraulically tiltable bucket for ditch cleaning and slope finishing applications.
- 5 Trapezoidal Bucket.** Features tapered design to shape ditch banks in one operation and to prepare and maintain small irrigation ditches. Available with fixed or mechanically adjustable wings.

Engines

	325D	330D	345C	385C
Cat® Engines with ACERT™ Technology	C7	C9	C13	C18
Net Power at 1800 rpm				
ISO 9249	140 kW (190 hp)	200 kW (270 hp)	239 kW (325 hp)	390 kW (530 hp)
80/1269/EEC	140 kW (190 hp)	200 kW (270 hp)	239 kW (325 hp)	390 kW (530 hp)
Bore	110 mm	112 mm	130 mm	145 mm
Stroke	127 mm	149 mm	157 mm	171 mm
Displacement	7.2 L	8.8 L	12.5 L	18.1 L

- All engine horsepower (hp) are metric including front page.
- All engines meet Stage IIIA emission requirements.
- Net power advertised is the power available at the flywheel when the engine is equipped with fan, air cleaner, muffler, and alternator.
- Full engine net power up to 2300 m altitude (engine derating required above 2300 m).

Bucket Specifications

Excavation Buckets (90% fill factor)

B-family linkage

Width	Capacity (ISO)	Weight*	325D HDHW 16 m		330D HDHW 18 m		345C HDW 19.5 m	
			Pin-on	QC	Pin-on	QC	Pin-on	QC
600	0.44	564						
750	0.59	593						
1000	0.86	698						
1200	1.08	783						
1250	1.13	800				N		
1300	1.19	818		N	N	N		
1400	1.30	853		N	N	N		
1500	1.41	888	N	N	N	N		

CB-family linkage

Width	Capacity (ISO)	Weight*	325D L 14 m		325D HDHW 14 m	
			Pin-on	QC	Pin-on	QC
600	0.49	664				
750	0.67	688				
1250	1.29	919		N		
1300	1.35	958		N		
1350	1.42	979		N		
1400	1.48	1000	N	N		
1500	1.61	1043	N	N		
1600	1.74	1084	N	N		N

DB-family linkage

Width	Capacity (ISO)	Weight*	345C HDW 16 m		385C LVG 21.5 m	
			Pin-on	QC	Pin-on	QC
1000	1.11	1124				
1350	1.62	1333				
1500	1.84	1443				
1600	1.99	1501				N
1650	2.07	1530				N
1700	2.14	1558				N

HB-family linkage

Width	Capacity (ISO)	Weight*	385C LVG 18 m	
			Pin-on	QC
1150	2.00	2833		
1350	2.60	3073		
1750	3.50	3624		N

Ditch Cleaning Buckets (90% fill factor)

B-family linkage

Width	Capacity (ISO)	Weight*	325D HDHW 16 m		330D HDHW 18 m		345C HDW 19.5 m	
			Pin-on	QC	Pin-on	QC	Pin-on	QC
1800	1.05	690						
2000	1.18	750				N		

CB-family linkage

Width	Capacity (ISO)	Weight*	325D L 14 m		325D HDHW 14 m	
			Pin-on	QC	Pin-on	QC
2100	1.23	800				
2200	1.3	830				

DB-family linkage

Width	Capacity (ISO)	Weight*	345C HDW 16 m		385C LVG 21.5 m	
			Pin-on	QC	Pin-on	QC
2000	1.63	1095				

Tiltable Ditch Cleaning Buckets (90% fill factor)

B-family linkage

Width	Capacity (ISO)	Weight*	325D HDHW 16 m		330D HDHW 18 m		345C HDW 19.5 m	
			Pin-on	QC	Pin-on	QC	Pin-on	QC
1800	0.88	1010				N		
2000	0.98	1060		N	N	N		

CB-family linkage

Width	Capacity (ISO)	Weight*	325D L 14 m		325D HDHW 14 m	
			Pin-on	QC	Pin-on	QC
2000	0.98	1090				
2000	1.15	1120		N		

DB-family linkage

Width	Capacity (ISO)	Weight*	345C HDW 16 m		385C LVG 21.5 m	
			Pin-on	QC	Pin-on	QC
2200	1.52	1625				

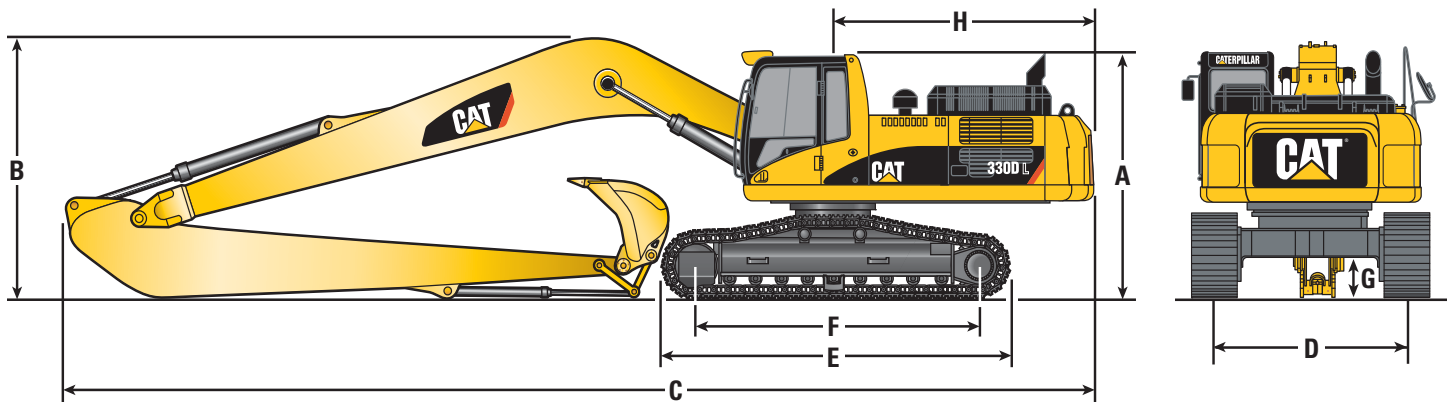
- Maximum material density 1800 kg/m³
- Maximum material density 1500 kg/m³
- Maximum material density 1200 kg/m³
- N Not recommended

Hydraulic System

	325D	330D	345C	385C
Main Implement System				
Maximum flow	2 x 235 L/min	2 x 280 L/min	2 x 360 L/min	980 L/min
Maximum pressure				
Implements	350 bar	350 bar	350 bar	320 bar
Travel	350 bar	350 bar	350 bar	350 bar
Swing	275 bar	280 bar	314 bar	260 bar
Pilot System				
Maximum flow	32 L/min	43 L/min	43 L/min	90 L/min
Maximum pressure	39 bar	39 bar	41 bar	41 bar
Bucket Cylinder Family (Short/Long)	CB2/B1	CB2/B1	DB/B1	HB/DB

Dimensions and Weights

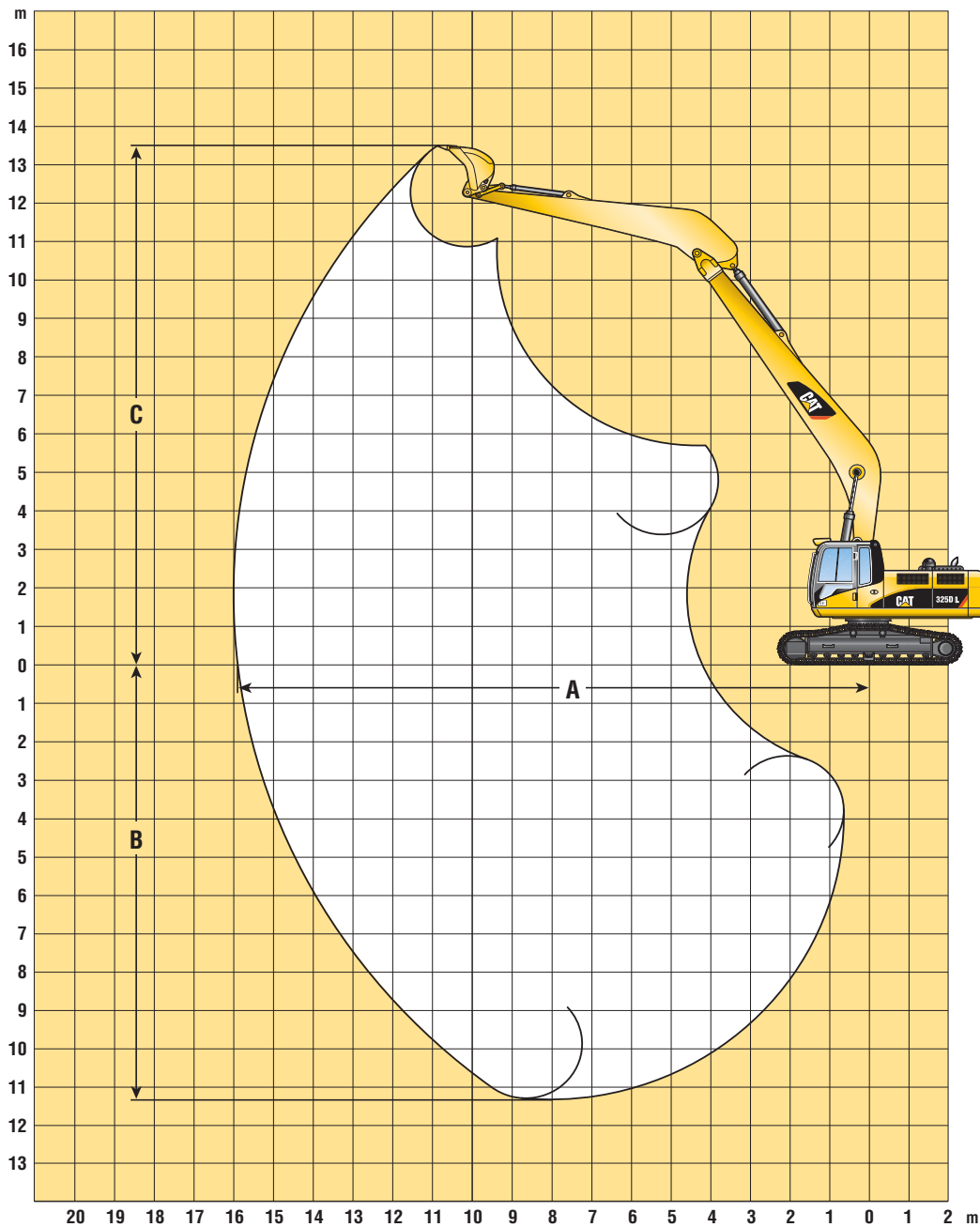
All dimensions and weights are approximate



		325D			330D			345C		385C	
		L	HDHW	HDHW	L	HDHW	HDHW	HDW	HDW	LVG	LVG
Undercarriage											
Front Linkage		14 m	14 m	16 m	15.5 m	15.5 m	18 m	16 m	19.5 m	18 m	21.5 m
A Cab height											
without FOG	mm	3170	3392	3392	3280	3511	3511	3373	3373	3760	3760
with FOG	mm	3340	3562	3562	3450	3681	3681	3543	3543	3950	3950
B Boom height	mm	3205	3340	3575	3305	3445	3595	3555	3725	5715	4280
C Overall length	mm	12155	12130	13640	13665	13630	15310	14500	16480	16605	18780
D Shipping gauge	mm	2590	2920	2920	2590	2920	2920	3220	3220	2750	2750
Working gauge	mm	2590	2920	2920	2590	2920	2920	3720	3720	3510	3510
E Track length	mm	4860	4860	4860	5020	5020	5020	5340	5340	6360	6360
F Length to centers of rollers	mm	3990	3990	3990	4040	4040	4040-	4340	4340	5120	5120
G Ground clearance	mm	480	660	660	510	720	720	740	740	890	890
H Tail swing radius	mm	3080	3080	3080	3500	3500	3500	3770	3770	4590	4590
Boom length	mm	8000	8000	9500	9000	9000	10660	9500	11500	10500	12500
Stick length	mm	5300	5300	6000	6000	6000	7100	6500	8500	5500	9500
Linkage family		CB2	CB2	B1	CB2	CB2	B1	DB	B1	HB	DB
Counterweight	kg	7700	7700	7700	8450	8450	8450	12000	12000	14700	14700
Operating weight	kg	32230	33580	33580	38420	39990	39680	55350	55 800	88310	88490

Working Ranges – 325D

Long reach excavation front parts with heavy duty upper frame, 7700 kg counterweight, 800 mm triple grouser shoes.

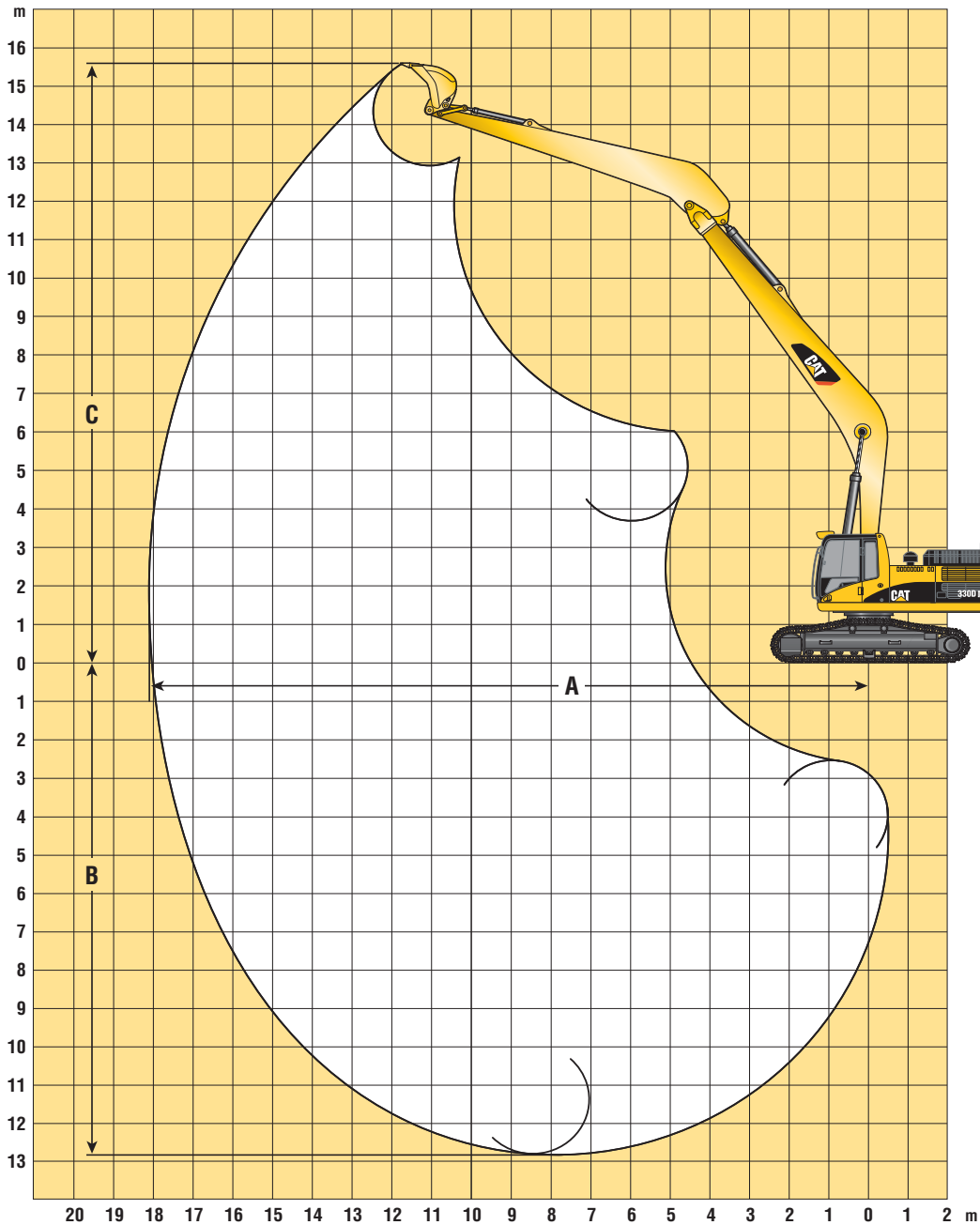


Undercarriage		L	HDHW	HDHW
Front linkage		14 m	14 m	16 m
A Maximum reach	mm	14 105	14 105	15 990
B Maximum digging depth	mm	10 135	9915	11 350
C Maximum cutting height	mm	11 940	12 160	13 550
Bucket tip radius	mm	1610	1610	1402
Bucket digging force (ISO 6015)	kN	138	138	118
Stick digging force (ISO 6015)	kN	97	97	88

Depending on the bucket used, the working range may change.

Working Ranges – 330D

Long reach excavation front parts with heavy duty upper frame, 8450 kg counterweight, 700 mm triple grouser shoes.

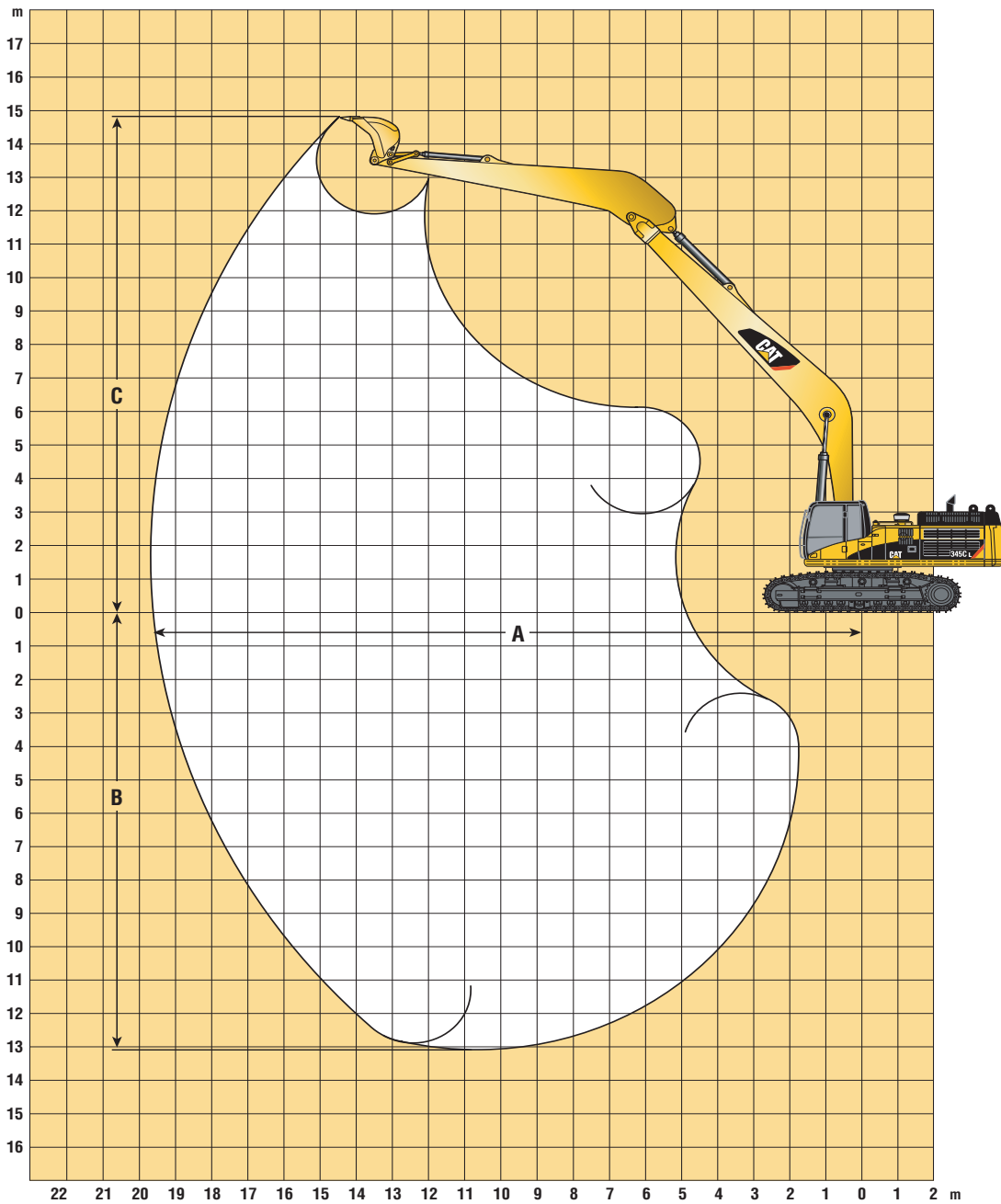


Undercarriage		L	HDHW	HDHW
Front linkage		15.5 m	15.5 m	18 m
A Maximum reach	mm	15 650	15 650	18 045
B Maximum digging depth	mm	11 095	10 865	12 890
C Maximum cutting height	mm	13 555	13 785	15 580
Bucket tip radius	mm	1453	1453	1402
Bucket digging force (ISO 6015)	kN	153	153	124
Stick digging force (ISO 6015)	kN	116	116	99

Depending on the bucket used, the working range may change.

Working Ranges – 345C

Long reach excavation front parts with heavy duty upper frame,
12 000 kg counterweight, 600 mm triple grouser shoes.

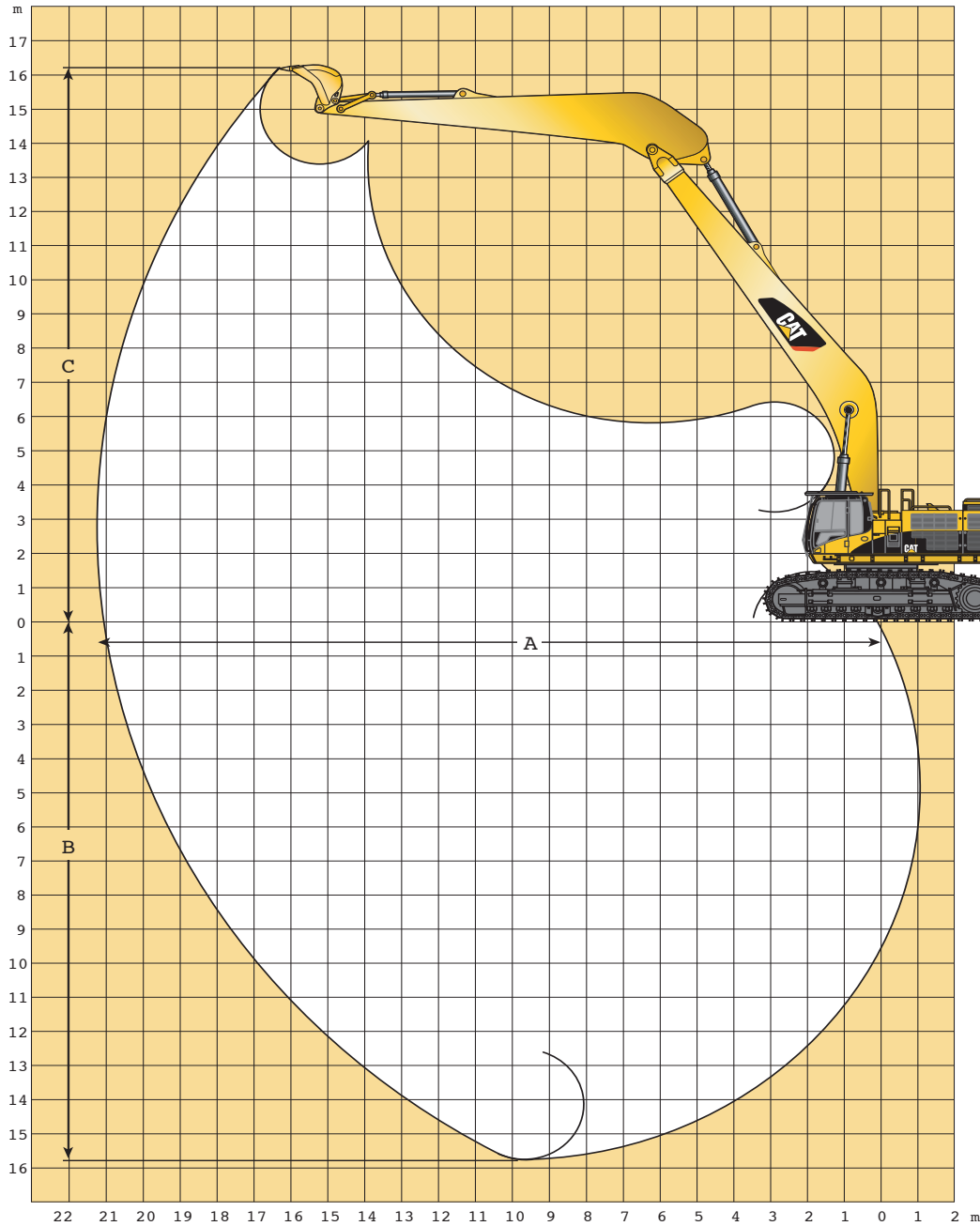


		HDW	HDW
Undercarriage			
Front linkage		16 m	19.5 m
A Maximum reach	mm	16 245	19 615
B Maximum digging depth	mm	10 440	13 115
C Maximum cutting height	mm	12 525	14 875
Bucket tip radius	mm	1680	1402
Bucket digging force (ISO 6015)	kN	181	130
Stick digging force (ISO 6015)	kN	139	111

Depending on the bucket used, the working range may change.

Working Ranges – 385C

Long reach excavation front parts with heavy duty upper frame, 14 700 kg counterweight, 750 mm triple grouser shoes.



Undercarriage		L VG	L VG
Front linkage		18 m	21.5 m
A Maximum reach	mm	17 950	21 310
B Maximum digging depth	mm	12 285	15 825
C Maximum cutting height	mm	15 400	16 015
Bucket tip radius	mm	1959	1658
Bucket digging force (ISO 6015)	kN	317	178
Stick digging force (ISO 6015)	kN	255	156

Depending on the bucket used, the working range may change.

Lift Capacities – 325D

Long reach excavation front parts with heavy duty upper frame, 7700 kg counterweight, 800 mm triple grouser shoes.
Heavy lift off. All weights are in kg.

Undercarriage – L

Front Linkage – 14 m

Bucket Weight/Capacity – 981 kg/1.3 m³

Reach (m)	1.5 m		3.0 m		4.5 m		6.0 m		7.5 m		9.0 m		10.5 m		12 m		13.5 m		m		
	Load Point Height	Load Radius Over Front	Load Point Height	Load Radius Over Front	Load Point Height	Load Radius Over Front	Load Point Height	Load Radius Over Front	Load Point Height	Load Radius Over Front	Load Point Height	Load Radius Over Front	Load Point Height	Load Radius Over Front	Load Point Height	Load Radius Over Front	Load Point Height	Load Radius Over Front			
9.0 m														*1730	*1730			*1250	*1250	11.95	
7.5 m														*2670	*2670			*1230	*1230	12.75	
6.0 m																		*1260	*1260	13.30	
4.5 m																		*1330	*1330	13.64	
3.0 m																		*1430	*1430	13.78	
1.5 m																		*1590	*1470	13.74	
0 m																		*1810	*1480	13.51	
-1.5 m	*3300	*3300	*4790	*4790	*9090	*9090	*9760	6050	*7400	4280	5610	3170	4350	2400	3460	1840		*2120	1560	13.08	
-3.0 m	*4890	*4890	*6440	*6440	*10320	9320	*9830	5890	7340	4140	5490	3070	4280	2330				*2570	1730	12.43	
-4.5 m	*6580	*6580	*8360	*8360	*12400	9390	*9500	5870	7300	4100	5460	3040	4270	2330				*3280	2040	11.53	
-6.0 m	*8450	*8450	*10640	*10640	*11500	9600	*8690	5970	*6770	4160	*5310	3090						*3820	2610	10.29	
-7.5 m																					

Undercarriage – HDHW

Front Linkage – 14 m

Bucket Weight/Capacity – 1025 kg/1.35 m³

Reach (m)	1.5 m		3.0 m		4.5 m		6.0 m		7.5 m		9.0 m		10.5 m		12 m		13.5 m		m			
	Load Point Height	Load Radius Over Front	Load Point Height	Load Radius Over Front	Load Point Height	Load Radius Over Front	Load Point Height	Load Radius Over Front	Load Point Height	Load Radius Over Front	Load Point Height	Load Radius Over Front	Load Point Height	Load Radius Over Front	Load Point Height	Load Radius Over Front	Load Point Height	Load Radius Over Front				
9.0 m														*1880	*1880			*1210	*1210	12.09		
7.5 m														*2370	*2370			*1200	*1200	12.85		
6.0 m																		*1230	*1230	13.36		
4.5 m																		*1300	*1300	13.67		
3.0 m																		*1420	*1420	13.79		
1.5 m																		*1580	*1580	13.72		
0 m																		*1810	*1810	13.46		
-1.5 m	*3500	*3500	*4980	*4980	*9170	*9170	*9760	7450	*7000	5280	5840	3940	4540	3020	*3570	2360		*2140	2050	13.00		
-3.0 m	*5100	*5100	*6670	*6670	*10540	*10540	*9780	7310	*7490	5410	5740	3840	4480	2960				*2620	2280	12.32		
-4.5 m	*6810	*6810	*8630	*8630	*12610	11790	*9370	7310	*7250	5120	5720	3820	4490	2970				*3390	2670	11.37		
-6.0 m	*8710		*10980	*10980	*12220	*12220	*8500	7430	*6600	5200	*5150	3890										
-7.5 m																						

Undercarriage – HDHW

Front Linkage – 16 m

Bucket Weight/Capacity – 759 kg/1.05 m³

Reach (m)	1.5 m		3.0 m		4.5 m		6.0 m		7.5 m		9.0 m		10.5 m		12 m		13.5 m		15.0 m		m	
	Load Point Height	Load Radius Over Front	Load Point Height	Load Radius Over Front	Load Point Height	Load Radius Over Front	Load Point Height	Load Radius Over Front	Load Point Height	Load Radius Over Front	Load Point Height	Load Radius Over Front	Load Point Height	Load Radius Over Front	Load Point Height	Load Radius Over Front	Load Point Height	Load Radius Over Front	Load Point Height	Load Radius Over Front		
10.5 m																						
9.0 m																						
7.5 m																						
6.0 m																						
4.5 m																						
3.0 m																						
1.5 m																						
0 m																						
-1.5 m																						
-3.0 m	*3790	*3790	*4490	*4490	*6440	*6440	*9300	6780	*7180	4830	5540	3650	4370	2850	3530	2270	3910	1830	*2360	1630	14.50	
-4.5 m	*4980	*4980	*5850	*5850	*7850	*7850	*8980	6770	*7040	4780	5480	3600	4320	2810	3500	2250			*2850	1820	13.73	
-6.0 m	*6260	*6260	*7350	*7350	*9580	*9580	*8400	6860	*6670	4810	*5400	3610	4330	2820	3540	2280			*3070	2140	12.72	
-7.5 m																						
-9.0 m																						

 Load Point Height
  Load Radius Over Front
  Load Radius Over Side
  Load at Maximum Reach

* Limited by hydraulic rather than tipping load.

The above loads are in compliance with hydraulic excavator lift capacity ratings standard ISO 10567, they do not exceed 87% of hydraulic lifting capacity or 75% of tipping capacity. Weight of all lifting accessories must be deducted from the above lifting capacities.

Lift Capacities – 345C

Long reach excavation front parts with heavy duty upper frame, 12 000 kg counterweight, 600 mm triple grouser shoes.
Heavy lift off. All weights are in kg.

	Undercarriage – HDW					Front Linkage – 16.2 m					Bucket Weight/Capacity – 1175 kg/2.2 m ³				
	3.0 m	4.5 m	6.0 m	7.5 m	9.0 m	10.5 m	12 m	13.5 m	15.0 m	16.5 m	18.0 m	19.5 m	21.0 m	22.5 m	24.0 m
10.5 m														*1540	*1540
9.0 m														*1550	*1550
7.5 m														*1620	*1620
6.0 m														*1720	*1720
4.5 m														*1880	*1880
3.0 m	*5040	*20540	*14270	*10950	*8900	*8900	*8900	*8900	*8900	*8900	*8900	*8900	*8900	*2090	*2090
1.5 m	*3500	*12080	*15970	*12040	*9620	*9620	*9620	*9620	*9620	*9620	*9620	*9620	*9620	*2370	*2370
0 m	*4930	*10090	*16960	*12800	*10160	*10160	*10160	*10160	*10160	*10160	*10160	*10160	*10160	*2740	*2740
-1.5 m	*6880	*10640	*17240	*13160	*12760	*12760	*12760	*12760	*12760	*12760	*12760	*12760	*12760	*3240	*3240
-3.0 m	*8550	*12100	*16900	*13090	*12460	*12460	*12460	*12460	*12460	*12460	*12460	*12460	*12460	*3940	*3940
-4.5 m	*10560	*14090	*16010	*12600	*12350	*12350	*12350	*12350	*12350	*12350	*12350	*12350	*12350		
-6.0 m	*12730	*16510	*14570	*11630	*9410	*9270	*9270	*9270	*9270	*9270	*9270	*9270	*9270		
-7.5 m		*15600	*15600	*12480	*10090	*8150	*8150	*8150	*8150	*8150	*8150	*8150	*8150		
-9.0 m						*7760	*7760	*7760	*7760	*7760	*7760	*7760	*7760		

	Undercarriage – HDW					Front Linkage – 18.6 m					Bucket Weight/Capacity – 832 kg/1.2 m ³				
	1.5 m	3.0 m	4.5 m	6.0 m	7.5 m	9.0 m	10.5 m	12 m	13.5 m	15.0 m	16.5 m	18.0 m	19.5 m	21.0 m	22.5 m
12.0 m														*1450	*1450
10.5 m														*1450	*1450
9.0 m														*1480	*1480
7.5 m														*1530	*1530
6.0 m														*1610	*1610
4.5 m														*1710	*1710
3.0 m														*1840	*1840
1.5 m														*2010	*2010
0 m		*3230	*4300	*5450	*6650	*7910	*9110	*10390	*11620	*12810	*14000	*15190	*16380	*17570	*18760
-1.5 m	*3580	*4300	*5450	*6650	*7910	*9110	*10390	*11620	*12810	*14000	*15190	*16380	*17570	*18760	*20000
-3.0 m	*4650	*5450	*6650	*7910	*9110	*10390	*11620	*12810	*14000	*15190	*16380	*17570	*18760	*20000	*21200
-4.5 m	*5570	*6650	*7910	*9110	*10390	*11620	*12810	*14000	*15190	*16380	*17570	*18760	*20000	*21200	*22400
-6.0 m		*9250	*11220	*12850	*14480	*16110	*17740	*19370	*21000	*22630	*24260	*25890	*27520	*29150	*30780
-7.5 m														*3440	*3440
-9.0 m															
-10.5 m															
-12.0 m															

Lift Capacities – 385C

Long reach excavation front parts with heavy duty upper frame, 14 700 kg counterweight, 750 mm triple grouser shoes.
Heavy lift off. All weights are in kg.

Undercarriage – LVG

Front Linkage – 18 m

Bucket Weight/Capacity – 2850 kg/2.0 m³

	1.5 m	3.0 m	4.5 m	6.0 m	7.5 m	9.0 m	10.5 m	12 m	13.5 m	15.0 m	m
12.0 m								*7590			*3490
10.5 m								*7650	*7030		*3350
9.0 m								*7940	*7400		*3280
7.5 m							*9370	*8390	*7660	6470	*3280
6.0 m						*11960	*11200	*8950	*8010	6350	*3330
4.5 m					*16620	*13280	*11090	*9550	*8410	6170	*3450
3.0 m					*18450	*14500	*11920	*10130	*8800	5960	*3630
1.5 m					*19740	*15470	14550	*10620	*9130	5760	*3880
0 m					*20400	*16090	13830	*10980	*9350	5590	*4220
-1.5 m				*11890	*20480	17670	*16330	10470	*9410	5470	*4680
-3.0 m			*9510	*15980	*20040	17480	*16170	13120	*9210	5460	*5290
-4.5 m		*10720	*14200	*21200	*19120	17530	*15570	13070	*8640		*6120
-6.0 m		*15420	*19650	*21670	*17650	*17650	*14470	13210	*7320	6850	
-7.5 m		*20910	*22990	*22990	*18830	*15500	*12710	*10270	*7810		
-9.0 m			*17780	*17780	*14930	*12350	*9930				

Undercarriage – LVG

Front Linkage – 21.5 m

Bucket Weight/Capacity – 1150 kg/1.45 m³

	1.5 m	3.0 m	4.5 m	6.0 m	7.5 m	9.0 m	10.5 m	12 m	13.5 m	15.0 m	16.5 m	18.0 m	19.5 m	m
13.5 m														*1970
12.0 m														*1980
10.5 m														*2010
9.0 m														*2080
7.5 m														*2180
6.0 m								*8440	*7180	*5870	*5740	*5070	*2940	*2300
4.5 m						*12190	*10300	*8890	*7810	*6950	*6240	*5640	*3500	*2470
3.0 m			*18170	*21390	*16290	*13100	*10910	*9330	*8120	*7170	*6390	*5730	*3950	*2670
1.5 m		*10420	*21090	*21090	*17370	*13850	*11450	*9710	*8390	7800	6400	*5810	4310	*2930
0 m		*5480	*9290	*16720	*18040	14370	13490	10800	8800	7210	5950	4910	4050	2900
-1.5 m		*6870	*9740	*15180	*18170	15960	14630	12400	8720	6700	5550	4610	3820	2077
-3.0 m		*8320	*10780	*15260	*18100	15080	14610	11630	8720	6700	5550	4610	3820	2077
-4.5 m		*8690	*9810	*12110	*16120	14600	14330	11150	8610	6280	5230	4360	3630	19.97
-6.0 m		*10110	*11350	*13620	*16710	14400	13760	10890	8330	6240	4980	41720	3500	19.37
-7.5 m		*11560	*12940	*15290	*17440	14430	12910	10830	8760	6700	5650	4030		
-9.0 m		*13050	*14610	*16900	*19360	16810	15170	10930	8560	6010	4800			
-10.5 m		*16330	*16330	*16990	*14190	*20000	*10200	8670	7340	5860				
-12 m			*12570	*10990	*9550	*8820	*8990	*5820						
-13.5 m				*7090	*6460	*5640	*4720							

325D, 330D, 345C, 385C LRE Long Reach Excavation

For more complete information on Cat products, dealer services, and industry solutions, visit us on the web at www.cat.com

Materials and specifications are subject to change without notice. Featured machines in photos may include additional equipment. See your Caterpillar dealer for available options.

© 2007 Caterpillar -- All rights reserved

CAT, CATERPILLAR, their respective logos, "Caterpillar Yellow" and the POWER EDGE trade dress as well as corporate and product identity used herein, are trademarks of Caterpillar and may not be used without permission.

HEHH3551 (04/2007) hr

CATERPILLAR[®]