

# M325D MH M325D LMH

## Material Handler



### Engine

Engine Model	Cat® C7 ACERT™	
Net Power – ISO 9249 – M325D MH	140 kW	190 hp
Net Power – ISO 9249 – M325D LMH	152 kW	204 hp

### Weights

Operating Weight – M325D MH	30 871 kg	68,059 lb
Operating Weight – M325D LMH	35 261 kg	77,737 lb

### Performance

Max. Drawbar Pull	158.7 kN	35,677 lb
-------------------	----------	-----------

### Operating Specifications

Max. Reach – 6.0 m (19'8") Stick	14 326 mm	47 ft 0 in
Max. Reach – 7.42 m (24'4") Stick	15 650 mm	51 ft 4 in

## M325D MH/M325D LMH Material Handler

*The M325D MH and M325D LMH incorporates many innovations for excellent performance and durability.*

---

### Cat® C7 Engine with ACERT™ Technology

- ✓ ACERT™ Technology works at the point of combustion to optimize engine performance and provide low exhaust emissions to meet U.S. EPA Tier 3 emission regulations, with exceptional performance capabilities, fuel efficiency and proven reliability. **pg. 4**

---

### Operator Station

Designed for ease of operation, high visibility, and comfort, the operator station allows the operator to focus on production. With the material handling job in mind, this machine is equipped with a 2.6 m (8'6") hydraulic cab riser to maximize viewing to all sides of the machine. **pg. 5**

---

### Structures

The structural components are the backbone of the machine's durability. Caterpillar® design and manufacturing techniques assure outstanding durability and service life. **pg. 6**

*The M325D MH and M325D LMH use the most sophisticated manufacturing technology to ensure the highest level of manufacturing quality. Excellent control, impressive lift capacity, and more comfortable operator station increase your productivity and lower your operating costs.*



---

### Hydraulics

The hydraulics system is designed to provide efficient performance, reliability and outstanding controllability with increased lifting capacity. The Heavy Lift Mode maximizes lifting performance while maintaining excellent stability. **pg. 7**

---

### Work Tools – Attachments

Orange Peel Grapples and magnets are offered to maximize performance of the M325D MH and M325D LMH. **pg. 8**

---

### Complete Customer Service

Your Cat® dealer offers a wide range of services that can be set up under a customer support agreement when you purchase your equipment. **pg. 9**

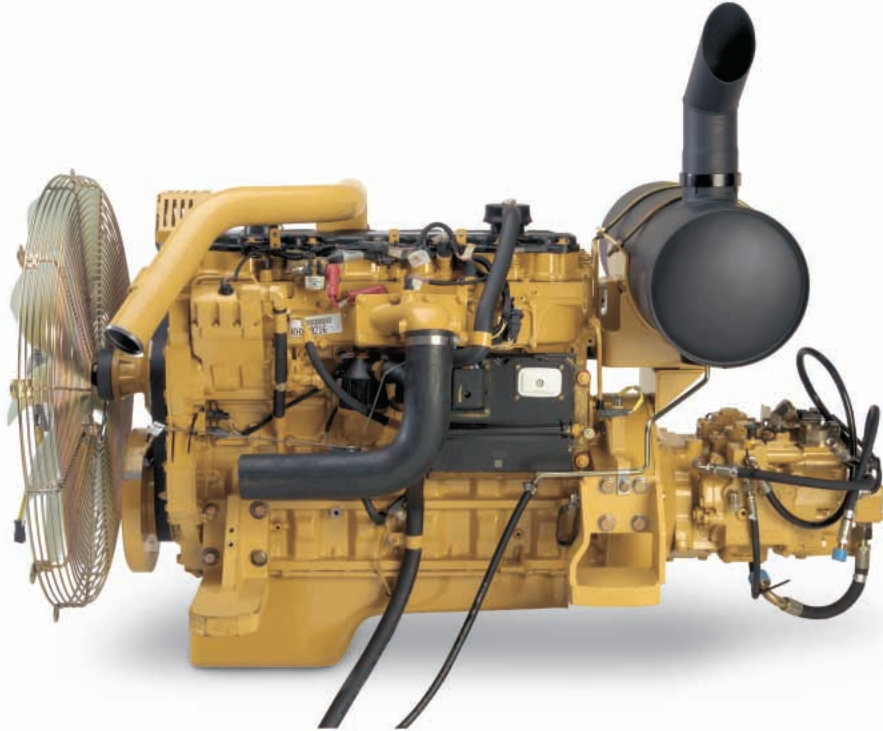


✓ *New Feature*



## Cat® C7 Engine with ACERT™ Technology

*ACERT™ Technology works at the point of combustion to optimize engine performance and provide low exhaust emissions to meet U.S. EPA Tier 3 emission regulations, with exceptional performance capabilities, fuel efficiency and proven reliability.*



**Performance.** The Cat® C7 with ACERT™ Technology offers more engine power and runs at lower speeds for better fuel economy and reduced wear.

**Automatic Engine Speed Control.** The two-stage, one-touch control maximizes fuel efficiency and reduces sound levels.

**Engine Controller.** ADEM™ A4 (Advanced Diesel Engine Management) controller uses sensors throughout the engine to manage engine load and performance. The ADEM™ A4 controller is the muscle behind engine responsiveness, self-diagnostics, controlling emissions, and fuel economy.

**Fuel System.** The Cat® C7 ACERT™ engine features electronic controls that govern the mechanically actuated unit fuel injection (MEUI) system. Multiple injection fuel delivery involves a high degree of precision. Precisely shaping the combustion cycles lowers combustion chamber temperatures, generating fewer emissions and optimizing fuel combustion. This translates into more work output for your fuel cost.

**Cooling System.** To reduce fan noise, the cooling fan is driven from a viscous clutch that is electrically controlled by the machine ECM. It calculates optimum fan speed based on the target engine speed, coolant temperature, hydraulic oil temperature and actual fan speed. The Cat® C7 ACERT™ engine delivers a completely new layout that separates the cooling system from the engine compartment.

**Air Cleaner.** The radial seal air filter features a double-layered filter core for more efficient filtration and is located in a compartment behind the cab. A warning is displayed on the monitor when dust accumulates above a preset level.

## Operator Station

The new cab, equipped with a 2.6 m (8'6") hydraulic cab riser provide improved visibility and comfort. The new monitor is a full-color graphical display with enhanced functionality to provide a simple, comprehensive machine interface.

**Operator Station.** To maximize visibility, all glass is affixed directly to the cab eliminating the use of window frames. 50/50 split front windshield allows both upper and lower portions to be stored in the overhead position with a one-touch action release system. Parallelogram wiper covers almost the complete front window without leaving unwiped areas in the immediate line of sight of the operator.

Parallelogram wiper covers almost the complete front window without leaving unwiped areas in the immediate line of sight of the operator.

The falling object guard on top and front of the cab is available as standard equipment. The front guard swings out for easier windshield cleaning.



*The bottom position is ideal for shipping and travel.*



*The medium position places the cab forward by 500 mm (20") more than the bottom position for increased visibility.*



*The top position raises the cab by 2.6 m (8'6"). This provides optimum viewing to all sides.*

**2.6 m (8'6") Hydraulic Cab Riser (HCR).** The M325D MH and M325DL MH are equipped with a new hydraulic cab riser, which offers increased visibility and comfort with additional cab height. Providing more flexibility, the HCR allows you to operate at any height between the lowest and highest positions.



**Monitor.** The compact, full-color, graphical display monitor displays machine, maintenance, diagnostic and prognostic information, in twenty different languages. Monitor angle can be adjusted to minimize sun glare.

**Consoles.** Redesigned consoles feature a simple, functional design to reduce operator fatigue, ease of switch operations and excellent visibility. Both consoles have attached armrests and allow the height of armrests to be adjusted.

**Implement Controls.** Easy to handle joysticks with integrated push buttons and sliding switches control all implement and swing functions. The sliding switches provide modulated control for grapple rotation and hydraulic cab riser activation. They are designed to increase operator comfort and reduce operator fatigue.

**Hydraulic Actuation Control Lever.** For added safety, this lever must be in the operate position to activate the machine controls functions.

The falling object guard on top and front of the cab is available as standard equipment. The front guard swings out for easier windshield cleaning.

**Seat.** The seat provides a variety of adjustments to suit operator's size and weight. Wide adjustable armrests and a retractable seat belt are also included. An air suspension seat with headrest is provided in the M325D MH and M325 D LMH.



## Structures

*Caterpillar's design and manufacturing techniques deliver outstanding durability and service life. Booms and sticks, made up of welded box-section structures, are fabricated with thicker plates to withstand high stresses.*



**Purpose Designed Upperframe and Counterweight.** The upperframe is specifically designed for the scrap and material handling markets. It is built of heavier strength material and thicker steel sections to handle the increased swing loads developed with the longer front parts, heavier counterweights, and cab risers used in material handling.

**Strong and Stable Undercarriage.** The M325D MH and M325DL MH wheeled undercarriages provide maximum rigidity and long service life.

The hydraulic lines are routed through the frame, and the cylinders have heavy-duty guards to provide protection from damage. The front axles on M325D MH and the rear axles on M325D LMH offer great oscillating and steering angles. The transmission is mounted directly on the rear axle for protection and optimum ground clearance.

The M325D MH includes 4 dual 12.00-20 solid rubber tires, and the M325D LMH is equipped with 4 single 16.00-25 solid rubber tires. Optional pneumatic tires are also available.

A large toolbox is provided.

**Material Handling Front.** The two front options meet your material handling needs with excellent lift performance and working range whether operating in close or at full reach. Built for strong performance and long service life.

**Efficient Design of Welded Box-Section Sections.** The design with thick, multi-plate fabrications in high stress areas allows structures to flex, dissipating stresses, and maximizing strength.

Finite element analysis is used in the determination of structural stresses and enables optimization of durability and performance. Castings and forging are used in critical high-load areas such as the boom nose, boom foot, and boom cylinder connection.

Internal baffle plates provide additional strength and durability throughout the structure to withstand torsional loads.

**Stress Relieving of Booms and Sticks.** Maximizes strength and minimizes structure weight for greater durability.

## Hydraulics

*The hydraulics system provides efficient performance, unmatched in the industry, designed to provide reliability and outstanding controllability with increased lifting capacity. The Heavy Lift Mode maximizes lifting performance while maintaining excellent stability.*

**Hydraulics.** The M325D MH and M325D LMH hydraulic system is designed to handle the specific requirements of the material handling industry.

**Pilot System.** The hydraulic pilot system controls the front linkage, swing, and travel operations.

**Hydraulic Cross-Sensing System.** The two main hydraulic pumps use 100 percent of available horsepower resulting in faster implement speeds and increased productivity.

**Boom and Stick Regeneration Circuit.** Saves energy during boom-down and stick-in operation, providing shorter cycle times and lower operating cost.

**Boom and Swing Priority.** The hydraulic system on the M325D MH and M325D LMH provides automatic priority function for boom-up and swing operations eliminating the need for work mode button. When the boom or swing is activated, the system automatically assigns priority based on operator demand.

**Hydraulic Cylinders Snubbers.** The hydraulic cylinder snubbers at the rod end of boom cylinders and both ends of stick cylinder reduce sound and increase cylinder life to keep machines working longer.

**Heavy Lift Feature.** The operator can select the heavy lift mode at the push of a button to boost lifting capability and provide improved controllability of heavy loads.

**Medium Pressure Circuit.** The on/off grapple rotate function on the M325C MH and M325C LMH has been replaced by modulated rotate function on the M325D MH/LMH with a sliding switch on the left joystick. The operator is able to precisely position the worktool. The grapple open/close function is also modulated using a high pressure circuit controlled by the right joystick.



## Work Tools – Attachments

*Orange Peel Grapples and magnets are offered to maximize performance of the M325D MH and M325D LMH.*



**Walker Magnets.** The Walker Liftmaster 1.22 m (48") Lift Master magnets can be used with the M325D MH or M325D LMH. The Walker Liftmaster 1.45 m (57") can be used with the M325D LMH with the 15.65 m (51'3") front or M325D MH with 14.3 m (47'0") front. The Walker Liftmaster Walker 1.68 m (66") is available for use with the M325D LMH with the 14.3 m (47'0") front.

These magnets have been designed and engineered for scrap processing applications. Ask your dealer salesperson for information on the Walker Magnet.

**Work Tool Selection.** When choosing a work tool, please consider the work tool application, the variation of the density of the material to be handled and productivity requirements. Check with your Cat® dealer for more details on specifications, sizes, and other work tool types.



**Orange Peel Grapples.** The 0.57 m<sup>3</sup> (0.75 yd<sup>3</sup>), 0.76 m<sup>3</sup> (1.00 yd<sup>3</sup>), and the 0.96 m<sup>3</sup> (1.25 yd<sup>3</sup>) Orange Peel Grapples are available attachments.



## Complete Customer Service

*Your Cat® dealer offers a wide range of services that can be set up under a customer support agreement when you purchase your equipment.*

**Cat® Dealers.** Your Cat® Dealer offers a wide range of services that can be set up under a customer support agreement when you purchase your equipment. To help you get the best return on your investment, the dealer will help you choose a plan that can cover everything from machine and attachment selection to replacement.

**Selection.** Make detailed comparisons of the machines you are considering before you purchase. What are the job requirements? What production is needed? What is the cost of lost production? Your Cat® Dealer can help you find precise answers to these questions.

**Purchase.** Look past the initial purchase price of the machine. Consider the financing options available as well as day-to-day operating costs. This is also the time to look at dealer services that can be included in the cost of the machine to yield lower equipment owning and operating costs over the long run.

**Maintenance.** What is the cost of preventative maintenance? More and more equipment buyers are planning for effective maintenance before buying equipment. Choose from your dealer's wide range of maintenance services at the time you purchase your machine. Repair option programs guarantee the cost of repairs up front. Diagnostic programs such as S·O·S<sup>SM</sup> and Technical Analysis help you to avoid unscheduled repairs.



**Replacement.** Repair, rebuild, or replace? Your Cat Dealer can help you evaluate the costs involved so you can make the right choice.

**Product Support.** You will find nearly all parts at our dealer parts counter. Cat Dealers utilize a worldwide computer network to find in-stock parts to minimize machine downtime. You can also save money with remanufactured components.

## Engine

Engine Model	Cat® C7 ACERT™	
Net Power – ISO 9249 – M325D MH	140 kW	190 hp
Net Power – ISO 9249 – M325D LMH	152 kW	204 hp
Displacement	7.2 L	439 in <sup>3</sup>
Net Power – EEC 80/1269 – M325D LMH	152 kW	204 hp
Net Power – EEC 80/1269 – M325D MH	140 kW	190 hp

- Meets EPA Tier 3 emissions requirements.
- Net power advertised is the power available at the flywheel when the engine is equipped with fan, air cleaner, muffler, and alternator.
- No engine derating is required below 3000 m (9,842.5 ft) altitude.

## Operating Specifications

Max. Travel Speed – M325D MH	20 km/h	12 mph
Max. Travel Speed – M325D LMH	18 km/h	11 mph
Max. Reach – 6.0 m (19'8") Stick	14 326 mm	47 ft 0 in
Max. Reach – 7.4 m (24'4") Stick	15 650 mm	51 ft 4 in

## Hydraulic System

Maximum Flow (each of two pumps)	235 L/min	62 gal/min
Max. Pressure Implements	35 000 kPa	5,076 psi
Max. Pressure Travel	35 000 kPa	5,076 psi
Max. Pressure Swing	27 500 kPa	7,265 psi
Rotate Circuit for Grapple Max. Flow	57 L/min	15 gal/min
Rotate Circuit for Grapple Max. Pressure	13 789 kPa	2,000 psi
Generator Auxiliary Pump Max. Flow	159 L/min	42 gal/min
Generator Auxiliary Pump Max. Pressure	17 237 kPa	2,500 psi

## Weights

Operating Weight – M325D MH	30 871 kg	68,059 lb
Operating Weight – M325D LMH Upper	35 261 kg	77,737 lb
Counterweight – M325D MH	8750 kg	19,290 lb
Counterweight – M325D LMH	5800 kg	12,787 lb
Counterweight – M325D LMH	7700 kg	16,976 lb
Undercarriage – M325D MH	11 084 kg	24,436 lb
Undercarriage – M325D LMH	13 236 kg	29,180 lb

## Performance

Max. Drawbar Pull	158.7 kN	35,677 lb
-------------------	----------	-----------

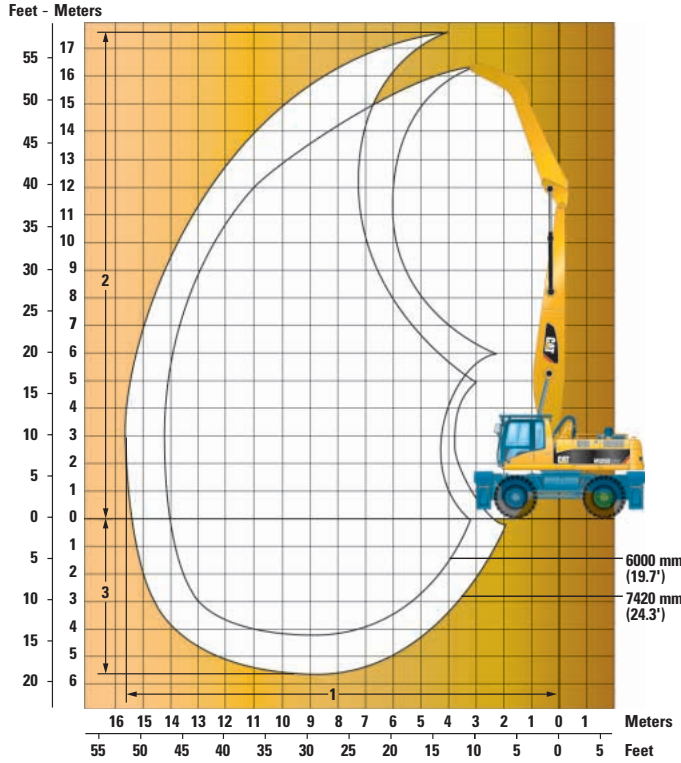
## Swing Mechanism

Swing Torque	82.2 kN·m	60,628 lb ft
Swing Speed	10.2 rpm	

## Service Refill Capacities

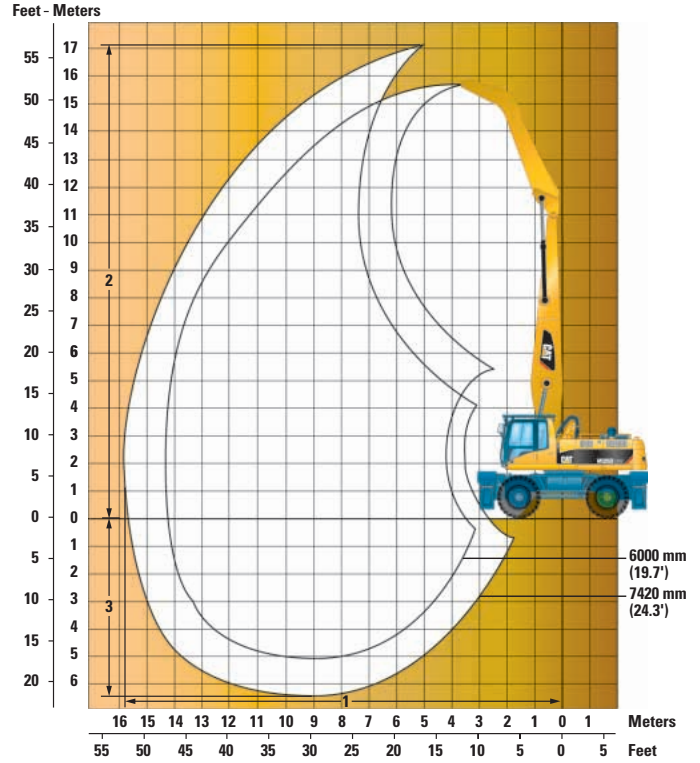
Fuel Tank	520 L	137 gal
Cooling System	30 L	7.93 gal
Engine Oil	34 L	8.98 gal
Final Drive (each)	2.5 L	0.66 gal
Hydraulic System (including tank)	310 L	81.9 gal

# Working Ranges



## M325D LMH

Boom length	8850 mm (29.0')
Stick length	<b>6000 mm (19.7')</b>
<b>1</b> Maximum reach	14 330 mm (47.0')
<b>2</b> Maximum height	16 600 mm (54.9')
<b>3</b> Maximum depth	4100 mm (13.4')
Stick length	<b>7420 mm (24.3')</b>
<b>1</b> Maximum reach	15 650 mm (51.3')
<b>2</b> Maximum height	17 800 mm (58.4')
<b>3</b> Maximum depth	5500 mm (18.1')



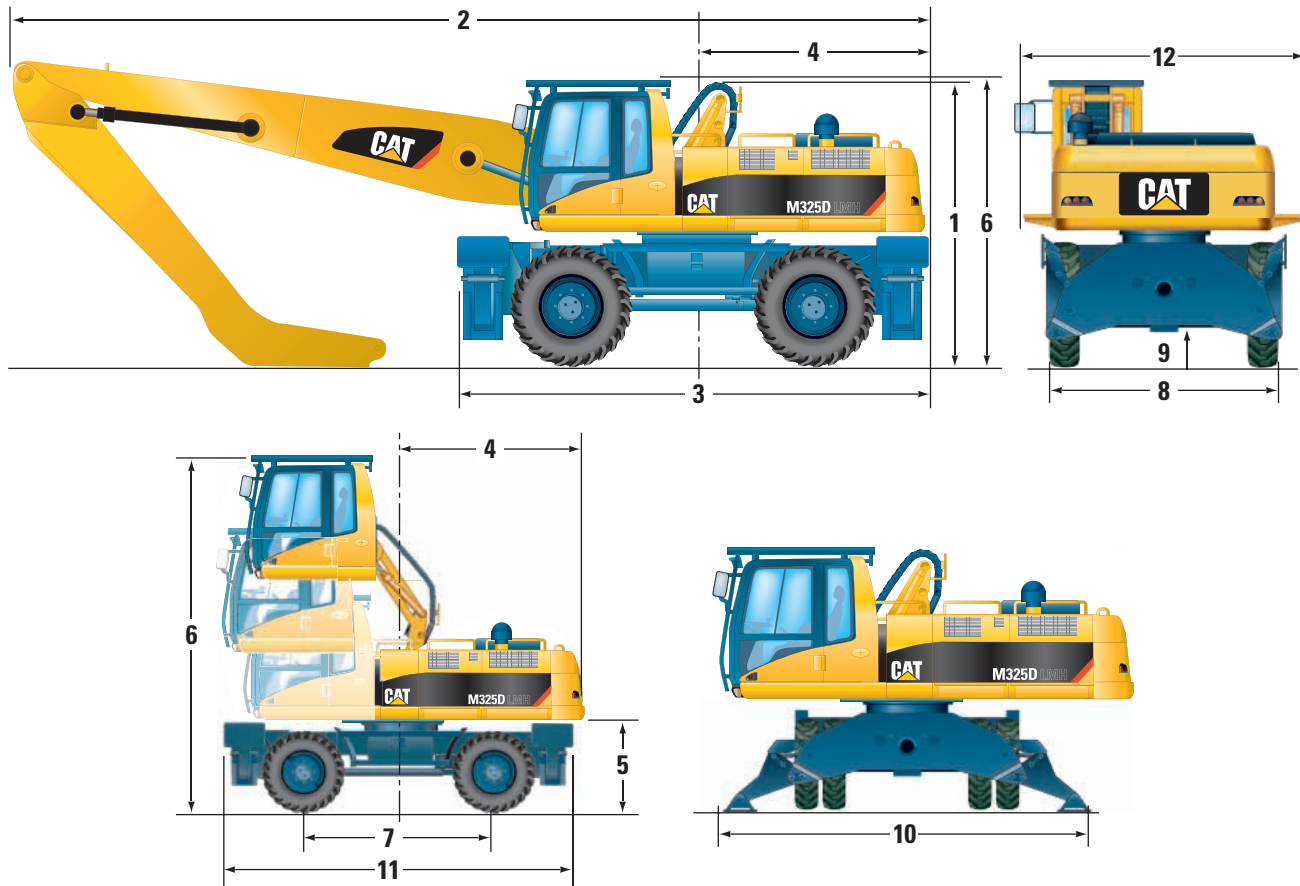
## M325D MH

Boom length	8850 mm (29.0')
Stick length	<b>6000 mm (19.7')</b>
<b>1</b> Maximum reach	14 330 mm (47.0')
<b>2</b> Maximum height	15 980 mm (52.4')
<b>3</b> Maximum depth	5000 mm (16.4')
Stick length	<b>7420 mm (24.3')</b>
<b>1</b> Maximum reach	15 650 mm (51.3')
<b>2</b> Maximum height	17 140 mm (56.3')
<b>3</b> Maximum depth	6400 mm (21.0')



# Dimensions

All dimensions are approximate.



	M325D MH		M325D LMH	
Boom length	8850 mm (29'0")	8850 mm (29'0")	8850 mm (29'0")	8850 mm (29'0")
Stick length	6000 mm (19'8")	7420 mm (24'4")	6000 mm (19'8")	7420 mm (24'4")
<b>1</b> Shipping height				
without stick	3551 mm (11'8")	3551 mm (11'8")	3800 mm (12'6")	3800 mm (12'6")
with boom and stick	3551 mm (11'8")	5096 mm (16'9")	3800 mm (12'6")	4750 mm (15'7")
<b>2</b> Shipping length				
without stick	12 182 mm (40'0")	12 182 mm (40'0")	12 182 mm (40'0")	12 182 mm (40'0")
with boom and stick	12 208 mm (40'1")	11 802 mm (38'9")	12 177 mm (39'11")	11 992 mm (39'4")
<b>3</b> Machine length	5921 mm (19'5")	5921 mm (19'5")	6227 mm (20'5")	6227 mm (20'5")
<b>4</b> Tail swing radius	3080 mm (10'1")	3080 mm (10'1")	3080 mm (10'1")	3080 mm (10'1")
<b>5</b> Counterweight ground clearance	1461 mm (4'9")	1461 mm (4'9")	1711 mm (5'7")	1711 mm (5'7")
<b>6</b> Cab height (lowered)	3398 mm (11'2")	3398 mm (11'2")	3648 mm (12'0")	3648 mm (12'0")
with FOG	3528 mm (11'7")	3528 mm (11'7")	3778 mm (12'5")	3778 mm (12'5")
Cab height (raised)	5992 mm (19'8")	5992 mm (19'8")	6242 mm (20'6")	6242 mm (20'6")
with FOGS	6122 mm (20'1")	6122 mm (20'1")	6372 mm (20'11")	6372 mm (20'11")
<b>7</b> Wheel base	3000 mm (9'10")	3000 mm (9'10")	3200 mm (10'6")	3200 mm (10'6")
<b>8</b> Shipping width	2990 mm (9'10")	2990 mm (9'10")	2990 mm (9'10")	2990 mm (9'10")
outside tires	2950 mm (9'8")	2950 mm (9'8")	3020 mm (9'11")	3020 mm (9'11")
outside stabs	3273 mm (10'9")	3273 mm (10'9")	3235 mm (10'7")	3235 mm (10'7")
<b>9</b> Ground clearance	248 mm (10")	248 mm (10")	270 mm (11")	270 mm (11")
<b>10</b> Width with stabilizers on ground	4864 mm (15'11")	4864 mm (15'11")	5240 mm (17'2")	5240 mm (17'2")
<b>11</b> Undercarriage length	5805 mm (19'1")	5805 mm (19'1")	6230 mm (20'5")	6230 mm (20'5")
<b>12</b> Body width	2990 mm (9'10")	2990 mm (9'10")	2990 mm (9'10")	2990 mm (9'10")
including steps	3722 mm (12'3")	3722 mm (12'3")	3722 mm (12'3")	3722 mm (12'3")
including cab platform	N/A	N/A	3995 mm (13'1")	3995 mm (13'1")

# M325D LMH – Lift Capacities – 6000 mm/19'8"


With 6000 mm stick.

**BOOM – 8850 mm**

**STICK – 6000 mm**

**MAXIMUM REACH/HEIGHT/DEPTH – 14 330 / 16 600 / 4100 mm**

**Metric Units/all weights are in kg**

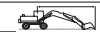
Undercarriage configuration	3.0m		4.5m		6.0m		7.5m		9.0m		10.5m		12.0m		13.5m						
	Upright	Down	Upright	Down	Upright	Down	Upright	Down	Upright	Down	Upright	Down	Upright	Down	Upright	Down	Upright	Down			
16.5 m Stabilizers up																					
16.5 m Stabilizers down																		*8210	*8210	3.69	
15.0 m Stabilizers up																					
15.0 m Stabilizers down					*7400	*7400												*6160	*6160	6.87	
13.5 m Stabilizers up					*7740	*7740												*5950	*5950	7.33	
13.5 m Stabilizers down					*8780	*8780	*7580	7340	*5540	5390								*5310	5260	9.12	
12.0 m Stabilizers up					*8930	*8930	*7830	*7830	*6010	*6010								*5210	*5210	9.43	
12.0 m Stabilizers down					*9510	*9510	*8770	7460	7110	5530	*5320	4210						*4890	4060	10.70	
10.5 m Stabilizers up					*9620	*9620	*8920	*8920	*7760	*7760	*5740	*5740						*4840	*4840	10.92	
10.5 m Stabilizers down					*10 140	*10 140	*8920	7440	7120	5550	5520	4260						4430	3380	11.87	
9.0 m Stabilizers up					*10 170	*10 170	*8940	*8940	*8020	*8020	*7290	*7290	*4760	*4760				*4640	*4640	12.05	
9.0 m Stabilizers down					*10 470	*10 370	*9120	7310	7040	5470	5480	4230	4370	3330				3900	2950	12.77	
7.5 m Stabilizers up					*10 560	*10 560	*9180	*9180	*8140	*8140	*7320	*7320	*6610	*6610				*4540	*4540	12.90	
7.5 m Stabilizers down					*11 770	*11 770	*11 140	9990	9160	7070	6880	5310	5390	4140	4320	3290		3550	2660	13.43	
6.0 m Stabilizers up					*12 170	*12 170	*11 290	*11 290	*9600	*9600	*8380	*8380	*7440	*7440	*6660	*6660	*4600	*4600	*4510	*4510	13.53
6.0 m Stabilizers down	*13 610	*13 610	*15 380	14 660	*12 090	9410	8790	6730	6650	5100	5240	4000	4240	3210	3490	2610	3310	3310	2460	13.91	
4.5 m Stabilizers up	*15 880	*15 880	*15 750	*15 750	*12 270	*12 270	*10 140	*10 140	*8670	*8670	*7580	*7580	*6700	6600	*5900	5480	*4550	*4550	*4550	13.97	
4.5 m Stabilizers down			*17 550	13 160	11 640	8690	8350	6310	6380	4840	5070	3840	4140	3110	3430	2550	3160	2330	14.20		
3.0 m Stabilizers up			*17 900	*17 900	*13 310	*13 310	*10 680	*10 680	*8960	*8960	*7710	*7710	*6720	6480	*5840	5420	*4650	*4650	14.24		
3.0 m Stabilizers down			*9080	*9080	10 830	7940	7890	5890	6100	4580	4890	3670	4020	3000	3370	2490	3070	2260	14.33		
1.5 m Stabilizers up			*7560	*7560	*14 000	*14 000	*11 050	*11 050	*9130	*9130	*7760	7730	*6670	6360	*5700	5350	*4810	*4810	14.34		
1.5 m Stabilizers down			*4950	*4950	10 180	7340	7500	5520	5850	4340	4730	3510	3920	2900	3310	2430	3040	2230	14.31		
0.0 m Stabilizers up			*4810	*4810	*13 990	*13 990	*11 070	*11 070	*9100	*9100	*7650	7560	*6500	6250	*5440	5290	*4790	*4790	14.29		
0.0 m Stabilizers down			*4850	*4850	9780	6980	7220	5250	5660	4150	4600	3390	3840	2820	3260	2390	3070	2250	14.12		
-1.5 m Stabilizers up			*4950	*4950	*10 770	*10 770	*10 650	*10 650	*8780	*8780	*7340	*7340	*6150	*6150	*4980	*4980	*4440	*4440	14.07		
-1.5 m Stabilizers down			*5580	*5580	9600	6810	7050	5100	5530	4030	4510	3300	3780	2770	3250	2370	3170	2320	13.76		
-3.0 m Stabilizers up			*5740	*5740	*10 130	*10 130	*9760	*9760	*8110	*8110	*6760	*6760	*5550	*5550	*4220	*4220	*4010	*4010	13.68		
-3.0 m Stabilizers down					9570	6780	6990	5040	5480	3980	4480	3270	3770	2760							
					*9820	*9820	*8400	*8400	*7060	*7060	*5830	*5830	*4600	*4600							

**BOOM – 29'0"**

**STICK – 19'8"**

**MAXIMUM REACH/HEIGHT/DEPTH – 47'0" / 54'6" / 13'5"**

**English Units/all weights are in lbs**

Undercarriage configuration	10.0ft		15.0ft		20.0ft		25.0ft		30.0ft		35.0ft		40.0ft		45.0ft				ft		
	Upright	Down	Upright	Down	Upright	Down	Upright	Down	Upright	Down	Upright	Down	Upright	Down	Upright	Down	Upright	Down			
50.0 ft Stabilizers up																					
50.0 ft Stabilizers down					*18,980	*18,980	*15,120	*15,120										*14,090	*14,090	21.00	
45.0 ft Stabilizers up					*19,490	*19,490	*16,120	*16,120										*13,540	*13,540	22.67	
45.0 ft Stabilizers down							*18,920	*18,920	*15,920	15,700								*11,880	*11,880	29.04	
40.0 ft Stabilizers up							*19,270	*19,270	*16,540	*16,540	*11,800	*11,800						*11,660	*11,660	30.09	
40.0 ft Stabilizers down							*20,700	*20,700	*18,870	16,030	15,260	11,860						*10,870	9190	34.51	
35.0 ft Stabilizers up							*20,940	*20,940	*19,250	*19,250	*16,380	*16,380	*11,200	*11,200				*10,760	*10,760	35.30	
35.0 ft Stabilizers down							*22,110	*22,110	*19,470	16,030	15,320	11,930	11,840	9130				9940	7580	38.58	
30.0 ft Stabilizers up							*22,180	*22,180	*19,490	*19,490	*17,510	*17,510	*15,570	*15,570				*10,250	*10,250	39.17	
30.0 ft Stabilizers down							*22,770	*22,360	*19,840	15,760	15,170	11,770	11,800	9080	9370	7120		8690	6570	41.63	
25.0 ft Stabilizers up							*22,950	*22,950	*19,950	*19,950	*17,730	*17,730	*15,960	*15,960	*13,430	*13,430		*10,010	*10,010	42.09	
25.0 ft Stabilizers down							*25,750	*25,750	*24,140	21,560	19,750	15,260	14,820	11,460	11,600	8910	9280	7060	7870	5910	43.93
20.0 ft Stabilizers up							*26,540	*26,540	*24,450	*24,450	*20,830	*20,830	*18,210	*18,210	*16,160	*16,160	*14,460	14,400	*9940	*9940	44.26
20.0 ft Stabilizers down	*29,010	*29,010	*33,180	31,700	*26,170	20,350	18,980	14,530	14,350	11,000	11,290	8620	9130	6900	7470	5580		7320	5450	45.54	
15.0 ft Stabilizers up							*33,950	*33,950	*26,540	*26,540	*21,980	*21,980	*18,830	*18,830	*16,470	*16,470	*14,550	14,200	*11,660	*11,660	45.77
15.0 ft Stabilizers down							*37,850	28,510	25,130	18,810	18,030	13,650	13,780	10,450	10,940	8270	8910	6680	7390	5490	46.56
10.0 ft Stabilizers up							*38,600	*38,600	*28,770	*28,770	*23,150	*23,150	*19,420	*19,420	*16,710	*16,710	*14,570	13,960	*12,590	11,660	46.69
10.0 ft Stabilizers down							*22,640	*22,640	23,390	17,170	17,040	12,720	13,160	9880	10,560	7920	8660	6460	7250	5360	47.01
5.0 ft Stabilizers up							*18,560	*18,560	*30,310	*30,310	*23,940	*23,940	*19,800	*19,800	*16,800	16,670	*14,440	13,710	*12,260	11,530	47.05
5.0 ft Stabilizers down							*11,620	*11,620	21,980	15,870	16,180	11,930	12,630	9370	10,210	7580	8440	6240	7120	5230	46.95
0.0 ft Stabilizers up							*11,220	*11,220	*30,360	*30,360	*24,010	*24,010	*19,710	*19,710	*16,580	16,290	*14,040	13,470	*11,640	11,400	46.88
0.0 ft Stabilizers down							*11,110	*11,110	21,098	15,080	15,570	11,350	12,210	8970	9920	7300	8270	6090	7030	5160	46.33
-5.0 ft Stabilizers up							*11,310	*11,310	*25,110	*25,110	*23,100	*23,100	*19,000	*19,000	*15,870	*15,870	*13,230	*13,230	*10,560	*10,560	46.16
-5.0 ft Stabilizers down							*12,660	*12,660	20,680	14,710	15,210	11,000	11,930	8710	9740	7120	8160	5980	7010	5140	45.14
-10.0 ft Stabilizers up							*13,010	*13,010	*23,300	*23,300	*21,160	*21,160	*17,550	*17,550	*14,570	*14,570	*11,860	*11,860			44.88
-10.0 ft Stabilizers down									20,610	14,640	15,080	10,890	11,820	8600	9660	7060	8160	5950			
									*21,297	*21,300	*18,170	*18,170	*15,210	*15,210	*12,480	*12,480	*9680	*9680			

\* Rated by hydraulic capacity rather than stability capacity. Rated loads do not exceed 87% of hydraulic lifting capacity or 75% of tipping capacity. All lifts with heavy lift on. Always refer to the appropriate Operation and Maintenance Manual for specific product information.

# M325D LMH – Lift Capacities – 7420 mm/24'4"

With 7420 mm stick.

**BOOM – 8850 mm      STICK – 7420 mm      MAXIMUM REACH/HEIGHT/DEPTH – 15 650 / 17 800 / 5500 mm**

**Metric Units/all weights are in kg**

Undercarriage configuration	3.0m		4.5m		6.0m		7.5m		9.0m		10.5m		12.0m		13.5m		15.0m		m						
																					ft				
16.5 m Stabilizers up																					*5230	*5230	6.86		
16.5 m Stabilizers down																						*5020	*5020	7.37	
15.0 m Stabilizers up																						*4370	*4370	9.36	
15.0 m Stabilizers down																						*4280	*4280	9.70	
13.5 m Stabilizers up																						*3950	*3890	11.11	
13.5 m Stabilizers down																						*3900	*3900	11.36	
12.0 m Stabilizers up																						*3710	*3190	12.43	
12.0 m Stabilizers down																						*3680	*3680	12.63	
10.5 m Stabilizers up																						*3570	*2740	13.46	
10.5 m Stabilizers down																						*3550	*3550	13.61	
9.0 m Stabilizers up																						*3260	*2430	14.25	
9.0 m Stabilizers down																						*3480	*3480	14.37	
7.5 m Stabilizers up																						*2990	*2210	14.85	
7.5 m Stabilizers down																						*3460	*3460	14.94	
6.0 m Stabilizers up																						2910	2140	15.28	
6.0 m Stabilizers down																						*4250	*4250	15.33	
4.5 m Stabilizers up																						2870	2090	15.55	
4.5 m Stabilizers down																						*3490	*3490	15.58	
3.0 m Stabilizers up																						2680	1950	15.67	
3.0 m Stabilizers down																						*3660	*3660	15.67	
1.5 m Stabilizers up																						2580	1850	15.64	
1.5 m Stabilizers down																						*3810	*3810	15.62	
0.0 m Stabilizers up																						2590	1850	15.47	
0.0 m Stabilizers down																						*4020	*4020	15.43	
-1.5 m Stabilizers up																						2690	1920	15.15	
-1.5 m Stabilizers down																						*3710	*3710	15.08	
-3.0 m Stabilizers up																						2770	1990	14.66	
-3.0 m Stabilizers down																						*3320	*3320	14.56	
-4.5 m Stabilizers up																									
-4.5 m Stabilizers down																									

**BOOM – 29'0"      STICK – 24'4"      MAXIMUM REACH/HEIGHT/DEPTH – 51'4" / 58'5" / 18'1"**

**English Units/all weights are in lbs**

Undercarriage configuration	10.0ft		15.0ft		20.0ft		25.0ft		30.0ft		35.0ft		40.0ft		45.0ft		50.0ft		ft						
																					ft				
55.0 ft Stabilizers up																						*12,100	*12,100	20.57	
55.0 ft Stabilizers down																						*11,550	*11,550	22.47	
50.0 ft Stabilizers up																						*9860	*9860	29.59	
50.0 ft Stabilizers down																						*9610	*9610	30.77	
45.0 ft Stabilizers up																						*8820	*8820	35.73	
45.0 ft Stabilizers down																						*8690	*8690	36.58	
40.0 ft Stabilizers up																						*8220	*7190	40.29	
40.0 ft Stabilizers down																						*8160	*8160	40.94	
35.0 ft Stabilizers up																						*7890	*6130	43.80	
35.0 ft Stabilizers down																						*7850	*7850	44.32	
30.0 ft Stabilizers up																						7250	5400	46.52	
30.0 ft Stabilizers down																						*7690	*7690	46.92	
25.0 ft Stabilizers up																						6640	4890	48.59	
25.0 ft Stabilizers down																						*7630	*7630	48.88	
20.0 ft Stabilizers up																						6220	4540	50.03	
20.0 ft Stabilizers down																						*7670	*7670	50.23	
15.0 ft Stabilizers up																						5930	4300	50.98	
15.0 ft Stabilizers down																						*7830	*7830	51.08	
10.0 ft Stabilizers up																						5750	4150	51.41	
10.0 ft Stabilizers down																						*8050	*8050	51.41	
5.0 ft Stabilizers up																						5690	4080	51.31	
5.0 ft Stabilizers down																						*8400	*8400	51.25	
0.0 ft Stabilizers up																						5710	4080	50.75	
0.0 ft Stabilizers down																						*8860	*8860	50.62	
-5.0 ft Stabilizers up																						5860	4190	49.67	
-5.0 ft Stabilizers down																						*8180	*8180	49.44	
-10.0 ft Stabilizers up																						6130	4390	48.06	
-10.0 ft Stabilizers down																									
-15.0 ft Stabilizers up																									
-15.0 ft Stabilizers down																									

\* Rated by hydraulic capacity rather than stability capacity. Rated loads do not exceed 87% of hydraulic lifting capacity or 75% of tipping capacity.

All lifts with heavy lift on.

Always refer to the appropriate Operation and Maintenance Manual for specific product information.



# M325D MH – Lift Capacities – 6000 mm/19'8"

With 6000 mm stick.

**BOOM – 8850 mm      STICK – 6000 mm      MAXIMUM REACH/HEIGHT/DEPTH – 14 330 / 15 980 / 5000 mm**

**Metric Units/all weights are in kg**

Undercarriage configuration	3.0m		4.5m		6.0m		7.5m		9.0m		10.5m		12.0m		13.5m		m		
	Stabilizers up	Stabilizers down	Stabilizers up	Stabilizers down	Stabilizers up	Stabilizers down	Stabilizers up	Stabilizers down	Stabilizers up	Stabilizers down	Stabilizers up	Stabilizers down	Stabilizers up	Stabilizers down	Stabilizers up	Stabilizers down			
15.0 m Stabilizers up Stabilizers down					*5930 *6130	*5930 *6130											*5290 *5180	*5290 *5180	6.48 6.74
13.5 m Stabilizers up Stabilizers down					*7330 *7400	*7330 *7400	*6210 *6340	5400	*4500	*4500							*4470 *4420	3980 *4420	8.87 9.04
12.0 m Stabilizers up Stabilizers down							7080 *7380	5530 *7380	5210 *6290	4040 *6290	3920 *4350	2990 *4350					3910 *4050	2980 *4050	10.52 10.65
10.5 m Stabilizers up Stabilizers down							7080 *7730	5540 *7730	5240 *6930	4070 *6930	4000 *6020	3060 *6020					3220 *3850	2420 *3850	11.75 11.85
9.0 m Stabilizers up Stabilizers down					*9030 *9070	7770 *9070	6970 *7880	5430 *7880	5180 *7000	4010 *7000	3980 *6300	3050 6240	3120 *5280	2340 4970			2790 *3740	2070 *3740	12.68 12.75
7.5 m Stabilizers up Stabilizers down					*9550 *9610	7460 *9610	6760 *8200	5230 *8200	5040 *7180	3880 *7180	3900 *6380	2970 6150	3090 *5720	2310 4930			2500 *3700	1830 *3700	13.38 13.43
6.0 m Stabilizers up Stabilizers down			*12 760 *13 210	10 900 *13 210	9140 *10 400	6970 *10 400	6450 *8640	4940 *8640	4840 *7420	3690 *7420	3780 *6500	2850 6010	3020 *5750	2240 4860	2440 *4830	1770 4000	2310 *3720	1670 *3720	13.88 13.92
4.5 m Stabilizers up Stabilizers down			13 180 *15 040	9620 *15 040	8460 *11 280	6340 *11 280	6060 *9110	4570 *9110	4610 *7660	3460 7410	3630 *6610	2710 5840	2150 *5770	2390 4760	1730 4810	2180 3950	2180 *3780	1560 3630	14.20 14.22
3.0 m Stabilizers up Stabilizers down			*9240 *8110	8220 *8110	7730 *11 960	5660 *11 960	5650 *9460	4180 9370	4350 7130	3220 7130	3470 *6660	2550 5670	2820 4650	2050 4650	2330 3890	1670 3890	2100 *3900	1490 3530	14.36 14.37
1.5 m Stabilizers up Stabilizers down			*4180 *4070	*4180 *4070	7130 *12 090	5100 *12 090	5290 *9540	3840 8970	4120 *7840	3000 6880	3320 *6610	2410 5510	2730 2560	1960 4540	2280 3830	1620 3830	2070 *4070	1460 3500	14.36 14.35
0.0 m Stabilizers up Stabilizers down			*3870 *3900	*3870 *3900	6740 *9160	4740 *9160	5020 *9270	3580 8670	3940 *7620	2830 6680	3190 *6380	2290 5380	2650 *5350	1880 4460	2240 *4370	1580 3790	2080 *3830	1460 3540	14.20 14.18
-1.5 m Stabilizers up Stabilizers down			*4410 *4470	*4410 *4470	6550 *8250	4560 *8250	4850 *8580	3430 8500	3820 *7110	2710 6550	3110 *5930	2210 5290	2600 *4890	1830 4410	2220 *3790	1560 3770	2140 *3470	1500 *3470	13.87 13.84
-3.0 m Stabilizers up Stabilizers down			*5170	*5170	6510 *8430	4520 *8430	4790 *7500	3360 *7500	3760 *6280	2650 *6280	3070 *5200	2170 *5200	2580 *4150	1820			2260	1590	13.37
-4.5 m Stabilizers up Stabilizers down							4800 *6010	3380 *6010	3760 *5080	2660 *5080	3080 *4120	2180							

**BOOM – 29'0"      STICK – 19'8"      MAXIMUM REACH/HEIGHT/DEPTH – 47'0" / 52'5" / 16'5"**

**English Units/all weights are in lbs**

Undercarriage configuration	10.0 ft		15.0 ft		20.0 ft		25.0 ft		30.0 ft		35.0 ft		40.0 ft		45.0 ft		ft			
	Stabilizers up	Stabilizers down	Stabilizers up	Stabilizers down	Stabilizers up	Stabilizers down	Stabilizers up	Stabilizers down	Stabilizers up	Stabilizers down	Stabilizers up	Stabilizers down	Stabilizers up	Stabilizers down	Stabilizers up	Stabilizers down				
50.0 ft Stabilizers up Stabilizers down			*15,610	*15,610	*12,390	*12,390											*12,170 *11,880	*12,170 *11,880	19.59 20.54	
45.0 ft Stabilizers up Stabilizers down					*15,720 *15,920	*15,720 *15,920	*12,920 *13,250	11,510 *13,250										*10,030 *9920	9260 *9920	28.18 28.77
40.0 ft Stabilizers up Stabilizers down					*17,370 *17,510	17,020 *17,510	15,170 *15,870	11,860 *15,870	11,130 *13,180	8620 *13,180								8890 *9020	6770 *9020	33.92 34.35
35.0 ft Stabilizers up Stabilizers down							15,230 *16,870	11,910 *16,870	11,240 *15,120	8730 *15,120	8550 *12,480	6550 *12,480						7230 *8530	5450 *8530	38.16 38.48
30.0 ft Stabilizers up Stabilizers down					*19,640 *19,710	16,760 *19,710	15,010 *17,150	11,710 *17,150	11,130 *15,230	8620 *15,230	8550 *13,740	6530 13,400	6660 *10,580	4980 *10,580				6240 *8270	4630 *8270	41.37 41.60
25.0 ft Stabilizers up Stabilizers down					*20,720 *20,830	16,120 *20,830	14,570 *17,810	11,290 *17,810	10,850 *15,610	8360 *15,610	8400 *13,870	6370 13,230	6610 *12,430	4940 10,600				5560 *8160	4080 *8160	43.73 43.93
20.0 ft Stabilizers up Stabilizers down			*27,490 *28,510	23,570 *28,510	19,750 *22,510	15,080 *22,510	13,910 *18,740	10,670 *18,740	10,450 *16,090	7960 *16,090	8140 *14,110	6130 12,940	6480 *12,480	4810 10,450	5230 *9280	3790 8600	5120 *8180	3700 *8180	45.44 45.57	
15.0 ft Stabilizers up Stabilizers down			28,510 *32,450	20,880 *32,450	18,280 *24,410	13,710 *24,410	13,100 *19,730	9880 *19,730	9940 *16,620	7470 *15,960	7830 *14,330	5820 12,590	6280 12,460	4630 10,230	5140 10,340	3700 8490	4830 *8330	3440 8000	46.56 46.62	
10.0 ft Stabilizers up Stabilizers down			*23,520 *20,420	17,860 *20,420	16,710 *25,880	12,260 *25,880	12,210 *20,500	9040 20,190	9390 *16,980	6970 15,370	7470 *14,440	5490 12,210	6090 12,210	4410 10,010	5000 10,210	3590 8380	4630 *8580	3290 7780	47.11 47.15	
5.0 ft Stabilizers up Stabilizers down					*9860 *9590	15,390 *9590	11,050 *26,210	8290 *26,210	8910 *20,700	6480 19,340	7140 *17,000	5180 14,820	4210 *14,310	4890 11,880	3480 9790	4560 10,100	3220 *8950	3220 7720	47.11 47.08	
0.0 ft Stabilizers up Stabilizers down			*8890 *8950	*8890 *8950	14,550 *21,450	10,250 *21,450	10,830 *20,080	7740 18,670	8510 *16,510	6110 14,400	6880 *13,800	4940 11,600	5710 *11,530	4060 9610	4830 *9280	3400 8160	4590 *8440	3220 7800	46.59 46.52	
-5.0 ft Stabilizers up Stabilizers down			*10,010 *10,140	*10,010 *10,140	14,130 *19,030	9860 *19,030	10,470 *18,610	7410 18,300	8220 *15,390	5840 14,110	6700 *12,790	4760 11,400	5600 *10,470	3950 9500	4780 *7890	3370 *7890	4720 *7630	3310 *7630	45.51 45.37	
-10.0 ft Stabilizers up Stabilizers down			*11,660	*11,660	14,020 *19,160	9770 *19,160	10,320 *16,230	7250 *16,230	8110 *13,540	5730 *13,540	6610 *11,160	4670 *11,160	5580 *8770	3920 *8770			4980	3510	43.80	
-15.0 ft Stabilizers up Stabilizers down							10,360 *12,920	7300 *12,920	8110 *10,870	5730 *10,870	6660 *8690	4700								

\* Rated by hydraulic capacity rather than stability capacity. Rated loads do not exceed 87% of hydraulic lifting capacity or 75% of tipping capacity. All lifts with heavy lift on.

Always refer to the appropriate Operation and Maintenance Manual for specific product information.

# M325D MH – Lift Capacities – 7420 mm/24'4"

With 7420 mm stick.

**BOOM – 8850 mm      STICK – 7420 mm      MAXIMUM REACH/HEIGHT/DEPTH – 15 650 / 17 140 / 6400 mm**

**Metric Units/all weights are in kg**

Undercarriage configuration	3.0 m		4.5 m		6.0 m		7.5 m		9.0 m		10.5 m		12.0 m		13.5 m		15.0 m		m					
16.5 m Stabilizers up																					*4520	*4520	6.43	
16.5 m Stabilizers down																						*4410	*4410	6.73
15.0 m Stabilizers up																						*3690	*3690	9.09
15.0 m Stabilizers down																						*3640	*3640	9.28
13.5 m Stabilizers up																						*3300	2870	10.92
13.5 m Stabilizers down																						*3270	*3270	11.06
12.0 m Stabilizers up																						3050	2290	12.29
12.0 m Stabilizers down																						*3060	*3060	12.40
10.5 m Stabilizers up																						2600	1920	13.36
10.5 m Stabilizers down																						*2940	*2940	13.44
9.0 m Stabilizers up																						2300	1670	14.18
9.0 m Stabilizers down																						*2860	*2860	14.25
7.5 m Stabilizers up																						2090	1490	14.81
7.5 m Stabilizers down																						*2840	*2840	14.86
6.0 m Stabilizers up																						1930	1360	15.26
6.0 m Stabilizers down																						*2840	*2840	15.30
4.5 m Stabilizers up																						1830	1270	15.56
4.5 m Stabilizers down																						*2880	*2880	15.58
3.0 m Stabilizers up																						1760	1210	15.70
3.0 m Stabilizers down																						*2960	*2960	15.71
1.5 m Stabilizers up																						1730	1180	15.70
1.5 m Stabilizers down																						*3070	3010	15.69
0.0 m Stabilizers up																						1730	1170	15.55
0.0 m Stabilizers down																						*3230	3030	15.53
-1.5 m Stabilizers up																						1810	1230	15.26
-1.5 m Stabilizers down																						*3190	3100	15.22
-3.0 m Stabilizers up																						1840	1250	14.80
-3.0 m Stabilizers down																						*2860	*2860	14.75
-4.5 m Stabilizers up																								
-4.5 m Stabilizers down																								
-6.0 m Stabilizers up																								
-6.0 m Stabilizers down																								

**BOOM – 29'0"      STICK – 24'4"      MAXIMUM REACH/HEIGHT/DEPTH – 51'4" / 56'3" / 21'0"**

**English Units/all weights are in lbs**

Undercarriage configuration	10.0 ft		15.0 ft		20.0 ft		25.0 ft		30.0 ft		35.0 ft		40.0 ft		45.0 ft		50.0 ft		ft					
55.0 ft Stabilizers up																						*10,560	*10,560	19.00
55.0 ft Stabilizers down																						*10,230	*10,230	20.08
50.0 ft Stabilizers up																						*8330	*8330	28.67
50.0 ft Stabilizers down																						*8220	*8220	29.33
45.0 ft Stabilizers up																						*7360	6570	35.07
45.0 ft Stabilizers down																						*7320	*7320	35.53
40.0 ft Stabilizers up																						*6830	5180	39.83
40.0 ft Stabilizers down																						*6790	*6790	40.19
35.0 ft Stabilizers up																						5820	4300	43.47
35.0 ft Stabilizers down																						*6500	*6500	43.77
30.0 ft Stabilizers up																						5120	3730	46.29
30.0 ft Stabilizers down																						*6330	*6330	46.52
25.0 ft Stabilizers up																						4630	3310	48.46
25.0 ft Stabilizers down																						*6260	*6260	48.62
20.0 ft Stabilizers up																						4280	3020	50.00
20.0 ft Stabilizers down																						*6260	*6260	50.10
15.0 ft Stabilizers up																						4280	2800	51.02
15.0 ft Stabilizers down																						*6350	*6350	51.08
10.0 ft Stabilizers up																						3880	2670	51.51
10.0 ft Stabilizers down																						*6530	*6530	51.54
5.0 ft Stabilizers up																						3810	2600	51.51
5.0 ft Stabilizers down																						*6770	6640	51.48
0.0 ft Stabilizers up																						3810	2580	51.02
0.0 ft Stabilizers down																						*7120	6680	50.95
-5.0 ft Stabilizers up																						3900	2650	50.03
-5.0 ft Stabilizers down																						*7030	6830	49.93
-10.0 ft Stabilizers up																						4060	2760	48.49
-10.0 ft Stabilizers down																						*6280	*6280	48.36
-15.0 ft Stabilizers up																								
-15.0 ft Stabilizers down																								
-20.0 ft Stabilizers up																								
-20.0 ft Stabilizers down																								

\* Rated by hydraulic capacity rather than stability capacity. Rated loads do not exceed 87% of hydraulic lifting capacity or 75% of tipping capacity.

All lifts with heavy lift on.

Always refer to the appropriate Operation and Maintenance Manual for specific product information.

## Standard Equipment

*Standard equipment may vary. Consult your Caterpillar dealer for details.*

### ELECTRICAL

- 65 Ampere alternator
- Light, genset box mounted
- Lights, cab mounted (one)
- Warning horn (front)
- Heavy Duty Batteries

### OPERATOR ENVIRONMENT

- AM-FM Radio
- 12V-7A power supply for radio and multipurpose socket
- Ashtray with lighter
- Beverage Holder
- Interior Lighting
- Coat Hook
- Suspension seat with headrest
- Wiring provision for electrical seat heating
- Floor Mat
- Positive filtered ventilation (pressurized cab)
- Instrumental panel and gauges
- Parking Brake
- FOGS Guard
- Sliding door window
- Polycarbonate skylight
- Sun shade for skylight and front windshield
- Windshield wiper (parallel type) and washers
- Alternate exit: hammer to break rear window glass
- Automatic climate control with bi-level air conditioner, heater, and defroster
- Tiltable steering column
- Travel control pedals
- Tiltable steering column
- Storage compartment with cover suitable for lunch box
- Neutral lever lockout for all controls
- Adjustable pilot operated joystick type (wrist lever) controls each with 3 on/off buttons and 1 slider
- Monitor
  - Full graphic and color display with language capability
  - Warning information, filter and fluid change information
  - Working hour information
  - Machine condition, error code, and tool mode setting information
  - Start up level check for hydraulic oil, engine oil, and engine coolant
- Heavy lift mode selection

### POWER TRAIN

- Cat C7 with ACERT™ Technology, 24-volt electric starting and air intake heater
- Tier 3 emissions package
- Radial seal air filters (330 mm/13") with double element, integrated cyclonic feature
- Caterpillar® extended life coolant
- Automatic engine speed control with push button return to idle
- Water separator in fuel line
- Muffler

### FUEL ECONOMY MODE

### UNDERCARRIAGE

- Creeper Speed
- Exclusive 3 position transmission braking control
- Four wheel hydrostatic drive with on-the-go shifting
- Four independent or simultaneously controlled hydraulic stabilizers with single axis float pad
- Fully hydraulic braking system
- Hydraulic maximum speed limiter
- Internal oil disk brakes
- Lockable oscillating axle
- Toolbox, left hand
- Two wheel steer
- Two Speed Hydrostatic Transmission
- Wide steps on both sides

### HYDRAULIC SYSTEMS

- High pressure grapple open-close hydraulic circuit
- Hydraulic and electric circuits for:
  - Boom Lowering check valves
  - Stick lowering check valves
  - Medium pressure functions (for HCR and grapple rotate)

### OTHER STANDARD EQUIPMENT

- Automatic swing parking brake
- Antifreeze
- Cold weather starting aids
- Cat 2.6 m (8'5") Hydraulically Adjustable Cab Riser
- Counterweight for material handling
- Heavy duty upper frame with bottom guards
- Travel Alarm
- Boom and stick regeneration circuit
- Separate hydraulic filter with re-useable metal tube for the filter element-no drop oil filter
- Automatic Swing Parking Brake
- Fine swing control
- Doors and cab lock with Caterpillar One Key Security System
- Fire wall between pump compartment and engine
- Overheat prevention system
- Mirrors (frame right, cab-left)



## Optional Equipment

*Optional equipment may vary. Consult your Caterpillar dealer for details.*

### STICKS – One of two stick options must be chosen

Stick, 6 m (19'7") Material Handling  
for 14.3 m (47'0") front

Stick, 7.42 m (24'3") Material Handling  
for 15.65 m (51'3") front

### MAGNET, WALKER

1.22 m (48") Liftmaster Magnet for 15.65 m (51'3") front  
on M325D MH or M325D LMH

1.45 m (57") Liftmaster Magnet for 15.65 m (51'3") front  
on M325D LMH or 14.3 m (47'0") front on M325D MH

1.68 m (66") Liftmaster Magnet for 14.3 m (47'0") front  
on M325D LMH only

### GRAPPLES

0.57 m<sup>3</sup> (0.75 yd<sup>3</sup>) for use with the 15.65 m (51'3") front  
on M325D MH

0.76 m<sup>3</sup> (1.00 yd<sup>3</sup>) for use with 15.65 m (51'3")  
on M325D MH LMH

0.96 m<sup>3</sup> (1.25 yd<sup>3</sup>) for use with the 14.3 m (47'0") front  
on M325D LMH or M325D MH

---

## Notes

# M325D MH/M325D LMH Material Handler

For more complete information on Cat products, dealer services,  
and industry solutions, visit us on the web at [www.cat.com](http://www.cat.com)

© 2007 Caterpillar  
All Rights Reserved  
Printed in U.S.A.

Materials and specifications are subject to change without notice.  
Featured machines in photos may include additional equipment.  
See your Caterpillar dealer for available options.

AEHQ5714-01 (2-07)  
Replaces AEHQ5714

CAT, CATERPILLAR, their respective logos, ACERT, "Caterpillar Yellow" and the  
POWER EDGE trade dress, as well as corporate and product identity used herein,  
are trademarks of Caterpillar and may not be used without permission.

**CATERPILLAR<sup>®</sup>**