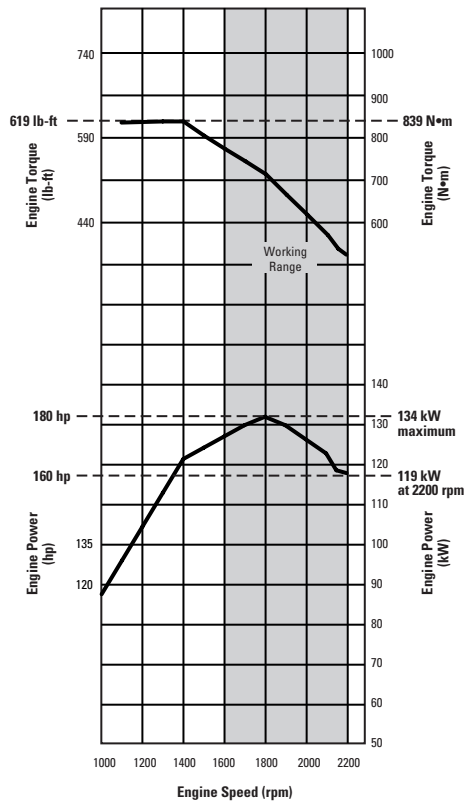


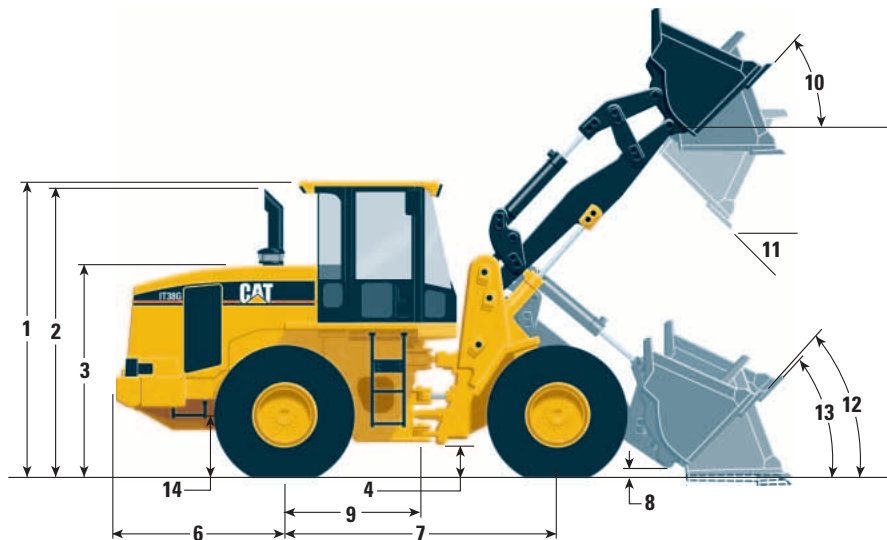
IT38G Series II Integrated Toolcarrier



IT38G Series II Integrated Toolcarrier

Dimensions – Material Handling Buckets

All dimensions are approximate.



1 Height to top of ROPS	3330 mm	10'10"
2 Height to top of exhaust pipe	3227 mm	10'7"
3 Height to top of hood	2359 mm	7'9"
4 Ground clearance with 20.5R25 (see Tire Options chart for other tires)	399 mm	1'4"
5 B-Pin height – standard	4061 mm	13'4"
6 Center line of rear axle to edge of counterweight	1857 mm	6'1"
7 Wheelbase	3020 mm	9'11"
8 B-Pin height @ carry – standard	235 mm	9'3"
9 Center line of rear axle to hitch	1510 mm	4'11"
10 Rack back @ maximum lift	45°	
11 Dump angle @ maximum lift	42°	
12 Rack back @ carry	46°	
13 Rack back @ ground	48°	
14 Height to center line of axle	690 mm	2'3"

Tires

Tread width for all tires is 2020 mm (80")

		Width over tires		Change in vertical dimensions		Change in operating weight without ballast		Change in static tipping load – straight	
		mm	inches	mm	inches	kg	lb	kg	lb
20.5-25, (L-3)	Bridgestone	2596	102	-9	-0.4	+209	+461	N/A	N/A
550/65R25, (L-3)	Michelin	2569	101	-80	-3.1	+43	+95	0	0
20.5-25, (L-2)	Goodyear	2607	103	+24	+0.9	-60	-132	-44	-97
20.5-25 (L-3)	Goodyear	2602	102	-22	-0.9	-86	-190	+64	+141
20.5-R25 (L-2)	Michelin XTLA	2601	102	0	0	0	0	0	0
20.5-R25 (L-3)	Michelin XHA	2594	102	+6	+0.2	-170	-375	+129	+284
20.5-R25 (L-3)	Goodyear GP2B	2595	102	+10	+0.4	+127	+280	+98	+216

NOTE:

Tire options include tires and rims.

In certain applications (such as load-and-carry work) the loader's productive capabilities might exceed the tires' tonnes-km/h (ton-mph) capabilities. Caterpillar recommends consulting a tire supplier to evaluate all conditions before selecting a tire model.

IT38G Series II Integrated Toolcarrier

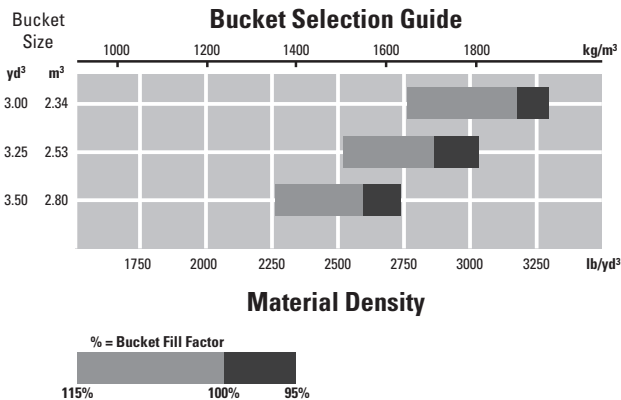
Operating Specifications

		Material Handling Buckets								
		Teeth and Segments			Teeth and Segments			Teeth and Segments		
		Teeth	Teeth and Segments	Bolt-On Edges	Teeth	Teeth and Segments	Bolt-On Edges	Teeth	Teeth and Segments	Bolt-On Edges
Rated Bucket Capacity (§)	m ³	2.21	2.34	2.34	2.41	2.53	2.53	2.65	2.80	2.80
	yd ³	2.75	3.00	3.00	3.00	3.25	3.25	3.25	3.50	3.50
Struck Capacity (§)	m ³	1.79	1.89	1.89	1.96	2.06	2.06	2.16	2.30	2.30
	yd ³	2.34	2.47	2.47	2.56	2.69	2.69	2.82	3.00	3.00
Width (§)	mm	2708	2708	2708	2708	2708	2708	2777	2777	2709
	ft/in	8'11"	8'11"	8'11"	8'11"	8'11"	8'11"	9'1"	9'1"	8'11"
Dump Clearance at Full Lift and 45° Discharge (§)	mm	2698	2698	2805	2698	2698	2805	2622	2622	2733
	ft/in	8'10"	8'10"	9'2"	8'10"	8'10"	9'2"	8'7"	8'7"	9'0"
Reach at Full Lift and 45° Discharge (§)	mm	1259	1259	1152	1259	1259	1152	1315	1315	1224
	ft/in	4'2"	4'2"	3'9"	4'2"	4'2"	3'9"	4'4"	4'4"	4'0"
Reach with Lift Arm Horizontal and Bucket Level (§)	mm	2626	2626	2475	2626	1515	2475	2720	2720	2577
	ft/in	8'7"	8'7"	8'1"	8'7"	8'7"	8'1"	8'11"	8'11"	8'5"
Digging Depth (§)	mm	41	66	66	41	66	66	41	66	66
	in	1.6"	2.6"	2.6"	1.6"	2.6"	2.6"	1.6"	2.6"	2.6"
Overall Length	mm	7631	7631	7481	7631	7631	7481	7738	7738	7582
	ft/in	25'0"	25'0"	24'7"	25'0"	25'0"	24'7"	25'5"	25'5"	24'11"
Overall Height with Bucket at Full Raise	mm	5128	5128	5128	5241	5241	5241	5299	5299	5299
	ft/in	16'10"	16'10"	16'10"	17'2"	17'2"	17'2"	17'5"	17'5"	17'5"
Turning Radius – Outside Corner of Racked Bucket, Carry Position (§)	mm	6114	6114	6069	6114	6114	6069	6184	6184	6099
	ft/in	20'1"	20'1"	19'11"	20'1"	20'1"	19'11"	20'3"	20'3"	20'0"
Static Tipping Load Straight *	kg	10 211	10 024	10 174	9917	9901	10 049	10 125	9940	10 030
	lb	22,515	22,103	22,434	21,867	21,832	22,158	22,326	21,918	22,116
Static Tipping Load Full 40° Turn	kg	8822	8646	8796	8550	8521	8669	8749	8574	8665
	lb	19,453	19,064	19,395	18,853	18,789	19,115	19,292	19,806	19,106
Breakout Force ** (§)	kN	127	119	120	126	117	119	117	109	110
	lb	28,575	26,775	27,000	28,350	26,325	26,775	26,325	24,525	24,750
Operating Weight * (§)	kg	14 546	14 639	14 529	14 682	14 775	14 665	14 565	14 659	14 583
	lb	32,074	32,279	32,036	32,374	32,579	32,336	32,116	32,323	32,156

* Static tipping loads and operating weight shown are based on standard machine configuration with 20.5R25 tires, full fuel tank, coolant, lubricants and operator.

** Measured 102 mm (4.0") behind tip of cutting edge with bucket hinge pin as pivot point in accordance with SAE J732C.

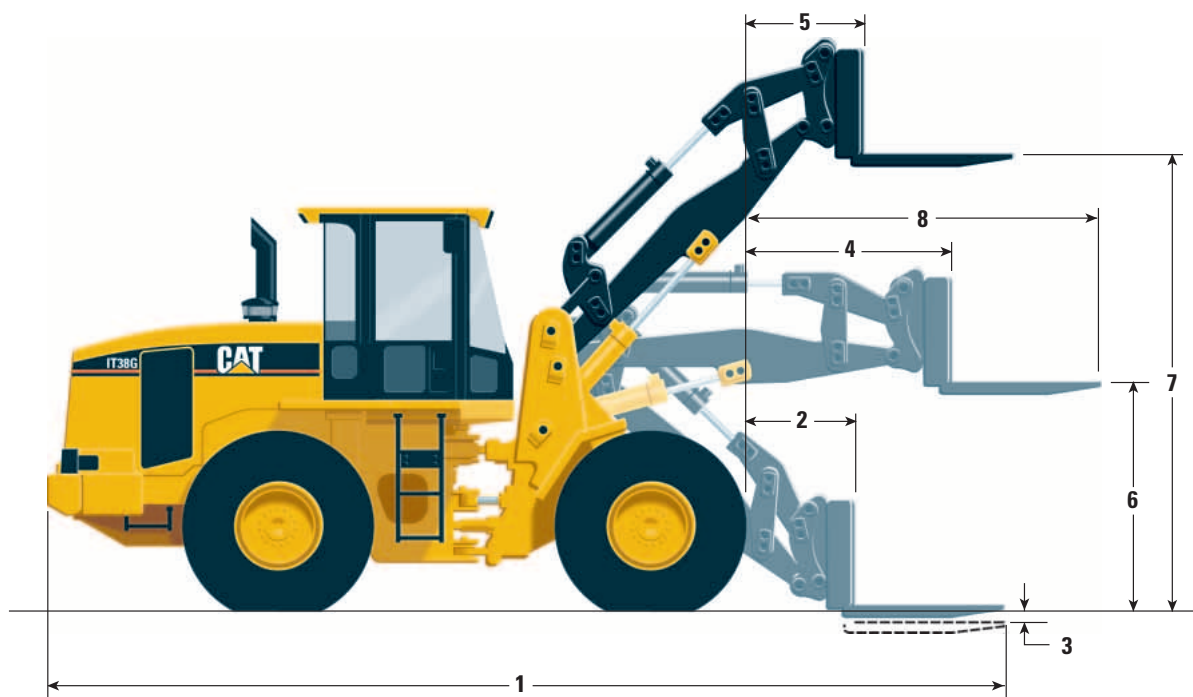
(§) Specifications and ratings conform to all applicable standards recommended by the Society of Automotive Engineers, including SAE Standard J732C governing loader ratings.



IT38G Series II Integrated Toolcarrier

Dimensions – Forks

All dimensions are approximate.



Fork tine length	mm	1219	1524	1829
	in	48"	60"	72"
1 Overall length, fork level on ground	mm	7935	8282	8540
	ft/in	26'0"	27'2"	28'0"
2 Carriage reach, fork level on ground	mm	1053	1096	1049
	ft/in	3'5"	3'7"	3'5"
3 Tine height, minimum lift, fork level	mm	104	147	93
	in	4"	6"	4"
4 Carriage reach, lift arm and fork level	mm	1622	1632	1626
	ft/in	5'4"	5'4"	5'4"
5 Carriage reach, maximum lift, fork level	mm	892	903	896
	ft/in	2'11"	3'0"	2'11"
6 Tine height, lift arm and fork level	mm	1735	1692	1746
	ft/in	5'8"	5'7"	5'9"
7 Tine height, maximum lift, fork level	mm	3591	3547	3601
	ft/in	11'9"	11'8"	11'10"
8 Overall reach, lift arm and fork level	mm	2841	3156	3455
	ft/in	9'4"	10'4"	11'4"
Static tipping load, straight with lift arm and forks level	kg	8302	7841	7419
	lb	18,306	17,289	16,359
Static tipping load, full 40° turn with lift arm and forks level	kg	7206	6800	6425
	lb	15,889	14,994	14,167
Operating weight * (§)	kg	14 216	14 261	14 377
	lb	31,346	31,446	31,701

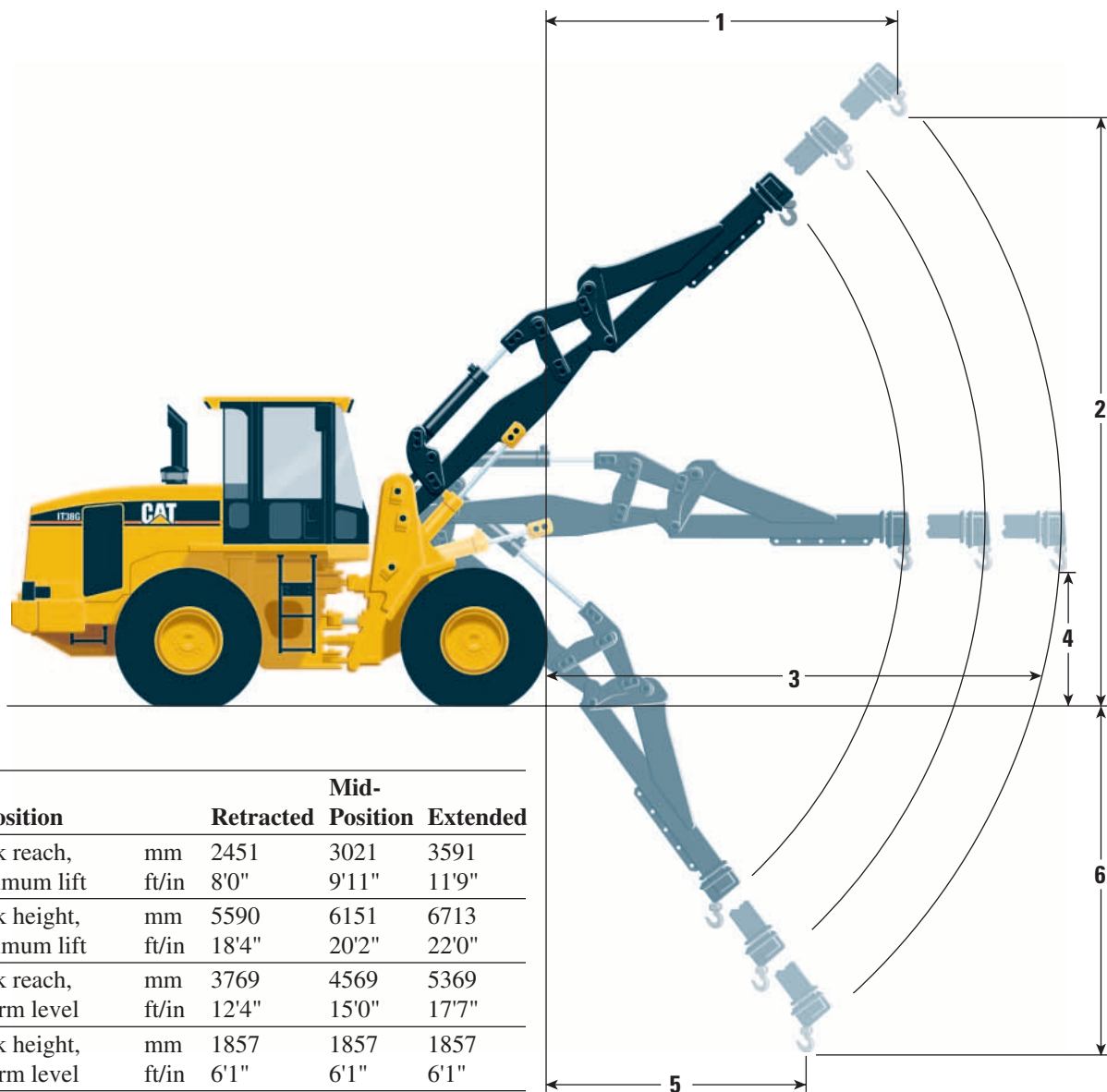
* Static tipping loads and operating weights shown are based on standard machine configuration with 20.5R25 tires, full fuel tank, coolants, lubricants and operator.

(§) Specifications and ratings conform to all applicable standards recommended by the Society of Automotive Engineers, including SAE Standard J732C governing loader ratings.

IT38G Series II Integrated Toolcarrier

Dimensions – Material Handling Arm

All dimensions are approximate.



Hook Position		Retracted	Mid-Position	Extended
1 Hook reach, maximum lift	mm	2451	3021	3591
	ft/in	8'0"	9'11"	11'9"
2 Hook height, maximum lift	mm	5590	6151	6713
	ft/in	18'4"	20'2"	22'0"
3 Hook reach, lift arm level	mm	3769	4569	5369
	ft/in	12'4"	15'0"	17'7"
4 Hook height, lift arm level	mm	1857	1857	1857
	ft/in	6'1"	6'1"	6'1"
5 Hook reach, minimum lift	mm	1801	2268	2736
	ft/in	5'11"	7'5"	9'0"
6 Hook height, minimum lift	mm	1988	2637	3287
	ft/in	6'6"	8'8"	10'9"
Static tipping load, straight	kg	5504	4658	4033
	lb	12,136	10,271	8,893
Static tipping load, full turn	kg	4780	4043	3499
	lb	10,540	8,915	7,715
Operating weight * (§)	kg	14 034	14 034	14 034
	lb	30,945	30,945	30,945

* Static tipping loads and operating weights shown are based on standard machine configuration with 20.5R25 tires, full fuel tank, coolants, lubricants and operator.

(§) Specifications and ratings conform to all applicable standards recommended by the Society of Automotive Engineers, including SAE Standard J732C governing loader ratings.