

Choose the right bucket...

WAL

Your profit depends on it.



Your new bucket has over 90 years of experience



Take on your newest job confident that the oldest name in earthmoving is right there with you. From the days of slide rules, our earthmoving experts have been partnering with customers just like you to **build better digging tools.**



You can trust the buckets you get from Caterpillar® are the best way to put the most machine power into the ground—all to provide you with the most profit-building productivity, fuel-saving efficiency, and long-lasting value. Beyond the bucket, you have 24/7 access to the expertise and skill of the Cat® dealer. And whatever new challenges tomorrow brings, Caterpillar is there with a solution for you.

It's a simple formula: more productivity = greater profit

Going cheap could cost you big



There's a science to the way material flows into and out of a bucket. Cat engineers have found a balance between floor length, bucket depth and opening size, tested and proven to make material flow efficiently.

Fact is, the wrong bucket in the wrong application can cut your efficiency. The right bucket gives you maximum **productivity and profit**. You need a bucket tuned for the materials and tasks you face, and Caterpillar has the bucket you need.

- Load and dump faster with bucket **contours and edges** engineered for maximum material flow.
- **Sidebars and shapes** make every pass productive, they're designed to keep material in the bucket.
- Put the full power of your Cat machine to work with the right floor length and the **ideal bucket depth**.



Three ways to save buckets of fuel

Did you know that fuel is burned most during the digging process? Cat buckets can give you...

*Optimum
penetration*

- Less effort digging in.

*Efficient
material loading*

- Less time filling your bucket.

*Maximum
material retention*

- Make every pass count.

The right Cat bucket can deliver up to 15% more efficiency.



Buy Right, Buy Once

Replacing buckets frequently is simply a losing game. Get a bucket that will last, from the company that makes tens of thousands of buckets every year. Cat buckets have *the right steel*—hard and abrasion resistant *where it counts*—and more flexible steel *where it's needed*. Assembly is done under strict ISO9000 conditions, using full-penetrating robotic welding for unmatched strength.



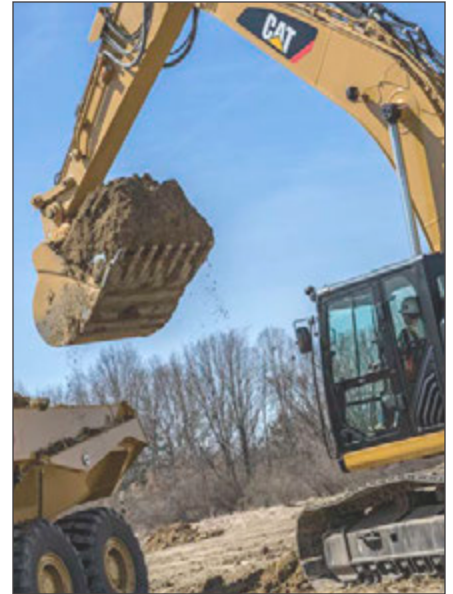
But even the best bucket shows wear eventually, and Cat has you covered there as well. Your local Cat dealer can replace almost every part of your bucket – from the GET up to *a full rebuild*. All with factory-cut, pre-beveled parts that will bring your bucket to the *same level of performance and reliability* it had when it was new.

A generic bucket is a compromise.

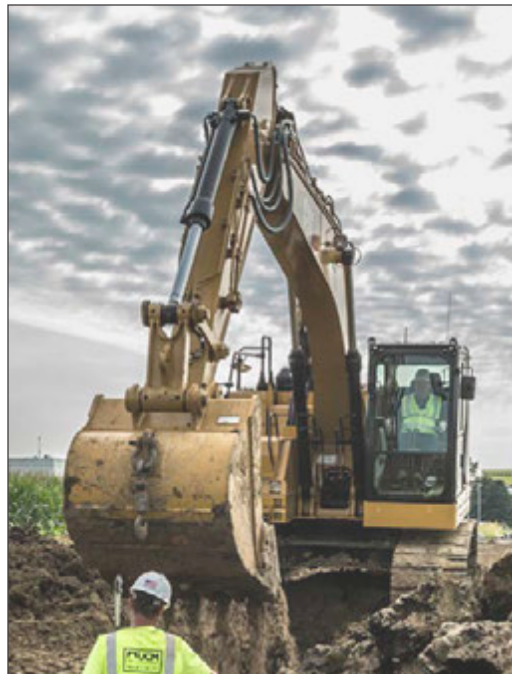
When you buy a Cat bucket, you get a lifetime of reliable, durable performance.



Many Jobs, Many Solutions



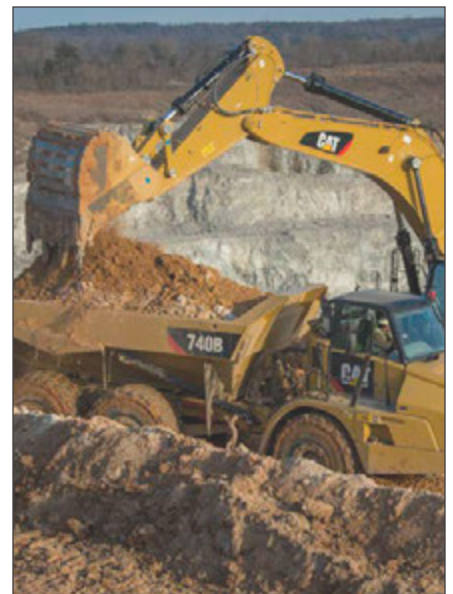
Sometimes, it simply comes down to moving the most. Topsoil? Shale? Rock? Take your pick of buckets built for **maximum production**, built to take on just about anything.



Site prep and utility work demand **precision excavation**. You have your choice of narrow buckets equipped to put your trenches right where the plan calls.



Grading and finishing need a smooth final touch. Cat **has you covered** with a solution that will have you finishing well.



The Main Bucket Line

These buckets are performers in the vast majority of excavation jobs; covering most material types.

Sized, shaped and armored for their particular task. Designed for tracked and wheeled excavators.

General Duty



- Perfect choice for general digging, loading and other dirt-handling applications
- 311 - 390; M313 - M322
- Dirt, loam, mixed gravel and dirt
- Trenching widths available
- Replaceable GET, pre-drilled for sidecutters

Heavy Duty



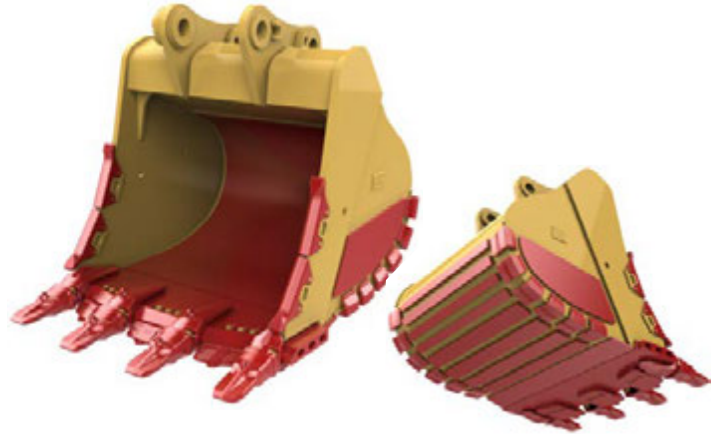
- Good all-purpose bucket in a wide range of soil types
- 318 - 374; M313 - M322
- Topsoil to rock
- Trenching widths available
- Replaceable GET, pre-drilled for sidecutters

Severe Duty



- Be productive in aggressive digging and loading applications
- 311 - 390; M313 - M322
- Sand, caliche and crushed granite
- Heavier wear plates
- Trenching widths available
- Oversized replaceable GET, pre-drilled for sidebar protectors

Extreme Duty



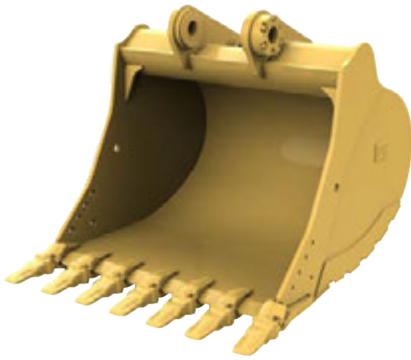
- Built to keep you productive in the most aggressive excavation and loading applications
- 336 - 390
- Broken slag, sandstone, high quartzite granite, iron ore
- Heaviest wear plates
- Armored corners, edge and sidebars with replaceable wear components

High strength microalloyed and T1 equivalent, high-strength, quenched and tempered steel: 90,000+ psi yield strength.

400 Brinell, high-strength, abrasion-resistant steel: 135,000 psi yield strength. 30% more wear resistant than T1.

Bucket shaded to differentiate material types. Actual buckets are Cat yellow.

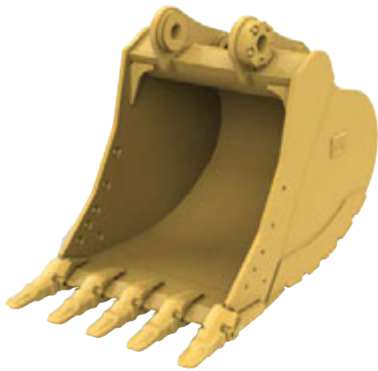
Unique Jobs, Unique Buckets



High Capacity

Designed and built for use in high production truck loading applications. With proper application and set up, these buckets will move more material in a minimum number of passes — maximizing production.

- 336 - 390
- General Duty durability



Power

Use in abrasive applications where breakout force and cycle times are critical — and in materials such as tightly compacted mixed dirt and rock.

(Not recommended for clay.)

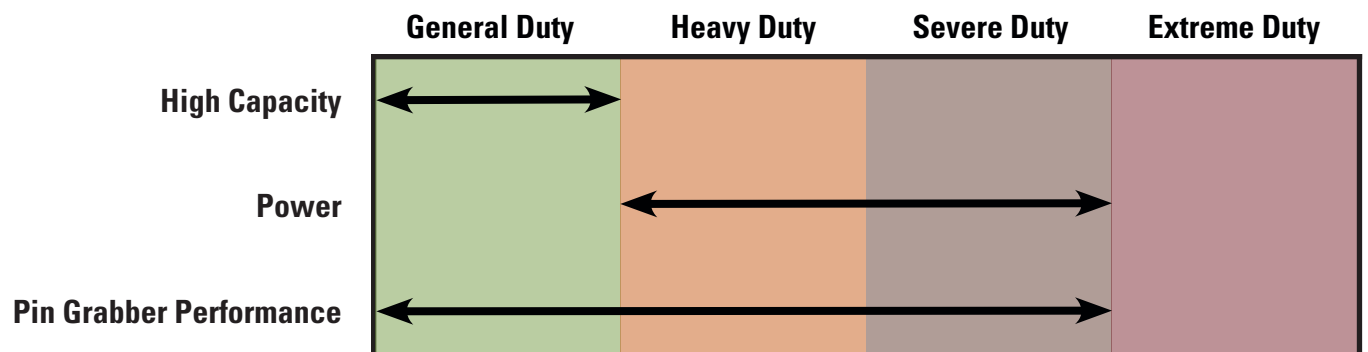
- 323 - 336; M322
- Heavy Duty or Severe Duty durability



Pin Grabber Performance

Maximum digging performance while keeping the versatility and convenience of a pin grabber coupler. Up to 10% improvement in breakout force when compared to a conventional pin-on bucket and coupler combination.

- 315 - 349; M322
- General Duty or Severe Duty durability



Grading & Finishing



Wide Tip

Perform best in low-impact materials such as dirt and loam where leaving a flat floor and minimal spillage is necessary. Corner adapters face straight forward to create a smooth edge.

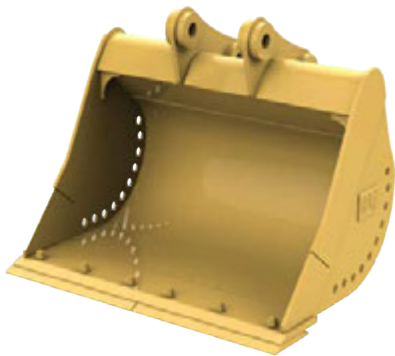
- 311 - 349
- General Duty durability



Clean-Up

Well suited for dirt digging plus grading and finish work. They feature widths and bolt-on cutting edge systems similar to Ditch Cleaning Buckets, but with capacities and durability more similar to General Duty Buckets.

- 311 - 336



Ditch Cleaning

Designed for cleaning ditches, sloping, grading and other finish work. Their shallow depth and compact size make working in confined areas easier. Drainage holes allow liquid to empty so material dumps more easily.

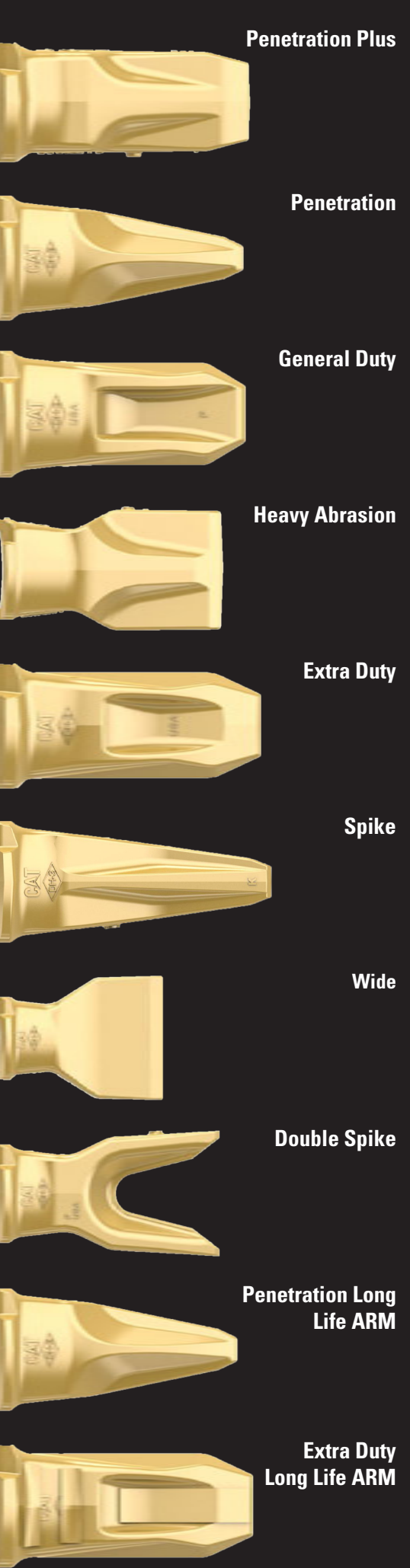
- 311 - 336; M313 - M322



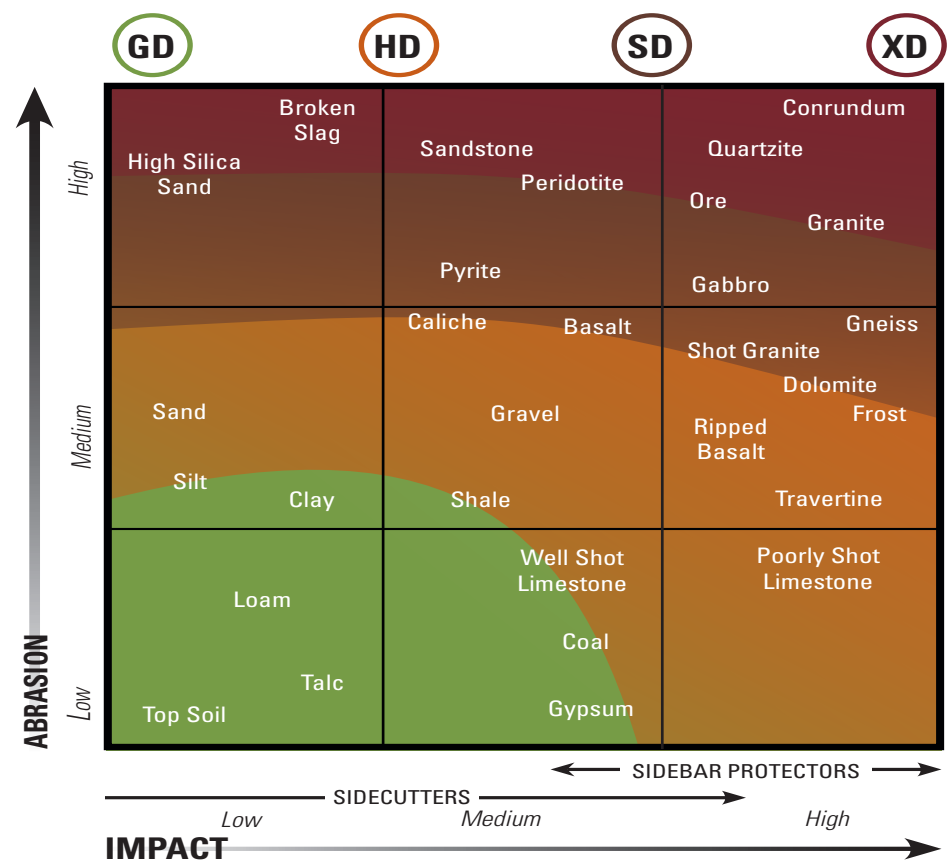
Ditch Cleaning Tilt

Tilt Buckets feature a full 45° of tilt in each direction, powered by two double-acting cylinders. Same grading ability, but gives you more control on slopes and complex grading.

- 311 - 329; M318 - M320



ARM - Abrasion Resistant Material

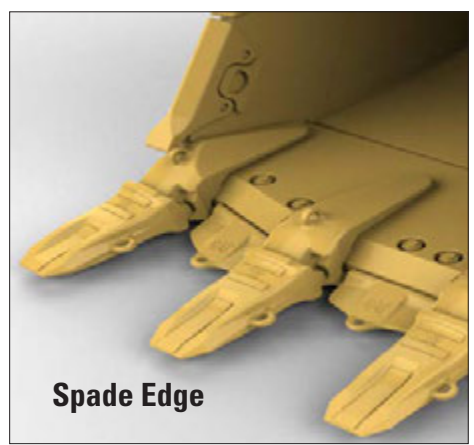
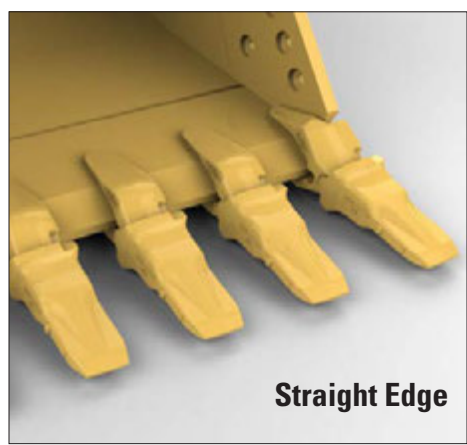


Key to getting the best from your bucket is selection. The chart above is a good way to start finding the right bucket for you.

But durability and size are just part of the equation. You also have a choice of edge style in many cases: typically straight edges for most, but spade edges to maximize penetration.

And don't overlook the GET. Cat offers you the widest range, but only the right GET will let your bucket perform the way it's meant to.

Sound complex? It doesn't have to be. Talk to your Cat dealer about what you're doing; be sure to get the setup that's right for you.



Beyond the Bucket

No matter where your work takes you, nearby is a Cat dealer. Nobody else is more committed to seeing you succeed, and ready to provide you financing, support and service as you need it.



And we know you do more than just dig. Your Cat dealer has a full range of solutions to help you meet the challenges of your next job. Partner with the team that's right there with you – right next door, or around the world.

For more complete information on Cat products, dealer services, and industry solutions, visit us on the web at www.cat.com

GEHQ0218-01 (05-16)

©2016 Caterpillar
All Rights Reserved

Materials and specifications are subject to change without notice. Featured machines in photos may include additional equipment. See your Cat dealer for available options.

CAT, CATERPILLAR, BUILT FOR IT, their respective logos, "Caterpillar Yellow," and the POWER EDGE trade dress, as well as corporate and product identity used herein, are trademarks of Caterpillar and may not be used without permission.

