



Cat[®] TL642D

TELEHANDLER WITH STABILIZERS

Specifications

Engine

Model	Cat [®] C4.4 ACERT™	
Gross Power (Basic)	74.5 kW	100 hp

Weights

Operating Weight	10 380 kg	22,884 lb
------------------	-----------	-----------

Operating Specifications

Rated Load Capacity	2948 kg	6,500 lb
Maximum Lift Height	12.8 m	42 ft
Maximum Forward Reach	9.1 m	30 ft
Frame Leveling	10°	
Top Travel Speed	32 km/h	20 mph
Capacity at Max Height (o/r Up)	2722 kg	6,000 lb
Capacity at Max Height (o/r Down)	2949 kg	6,500 lb
Capacity at Max Reach (o/r Up)	272 kg	600 lb
Capacity at Max Reach (o/r Down)	771 kg	1,700 lb
Turning Radius over Tires	3.7 m	12 ft
Drawbar Pull (Loaded)	88 kN	19,783 lbf

Hydraulic System

Gear Pump	Single-section	
System Operating Pressure	260 bar	3,770 psi
Auxiliary Hydraulic Pressure	240 bar	3,481 psi
Auxiliary Hydraulic Flow	68 L/min	18 gal/min

- Auxiliary Hydraulic Circuit used for all attachments equipped with cylinders or other hydraulic components.

Service Refill Capacities

Fuel Tank	145 L	38.3 gal
Hydraulic System	158 L	42 gal

Tires

Standard	370/75-28 Air Duraforce	
Optional	370/75-28 Foam Duraforce	
	13.00 × 24-16 PR Air	
	13.00 × 24-12 PR Foam Filled	
	13.00 × 24 Solid	

Transmission Speeds

Forward	4 speed
Reverse	3 speed

Boom Performance

Boom Up	15.5 Seconds
Boom Down	10.7 Seconds
Tele In	11.8 Seconds
Tele Out	17 Seconds

Axles

- Trunnion mounted planetary 55 degree steer axles.
- High bias limited slip differential on front axle.

Brakes

- Service Brakes are inboard wet disc brakes on front and rear axles.
- Parking Brakes are wet disc, spring applied hydraulic release on front axle.

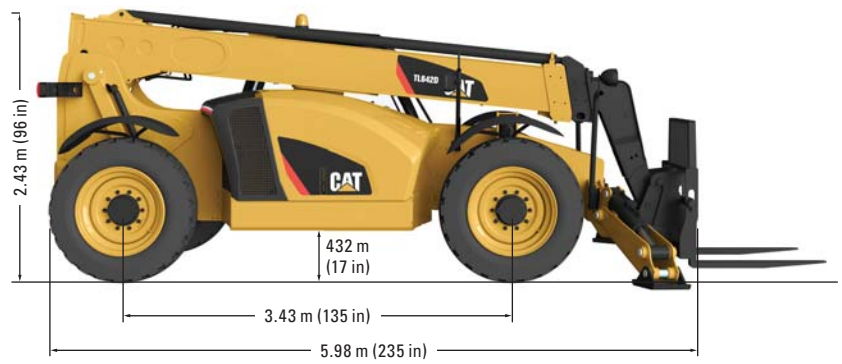
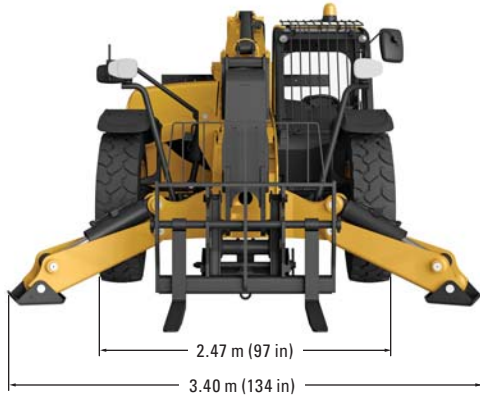
Work Tools

	Includes	Includes
Hydraulic IT Coupler	Auxiliary Electrics	Auxiliary Electrics
Pallet Forks	(2) 1220 mm, 60 mm × 125 mm (2) 1220 mm, 60 mm × 100 mm (2) 1525 mm, 60 mm × 150 mm	(2) 48 in, 2.36 in × 5 in (2) 48 in, 2.36 in × 4 in (2) 60 in, 2.36 in × 6 in
Lumber Forks	(2) 1525 mm, 45 mm × 180 mm (2) 1829 mm, 50 mm × 150 mm	(2) 60 in, 1.75 in × 7 in (2) 72 in, 2 in × 6 in
Cubing Forks	(2) 1220 mm, 50 mm × 50 mm	(2) 48 in, 2 in × 2 in
Carriages:		
Standard Tilt	1270 mm	50 in
Wide Tilt	1829 mm	72 in
Side Shift	1220 mm	48 in
Standard Rotate	1270 mm	50 in
Wide Rotate	1829 mm	72 in
Swing	100°, 1829 mm, 2948 kg Capacity, 2268 kg Swung	100°, 72 in, 6,500 lb Capacity, 5,000 lb Swung
Dual Fork Positioning	1270 mm	50 in

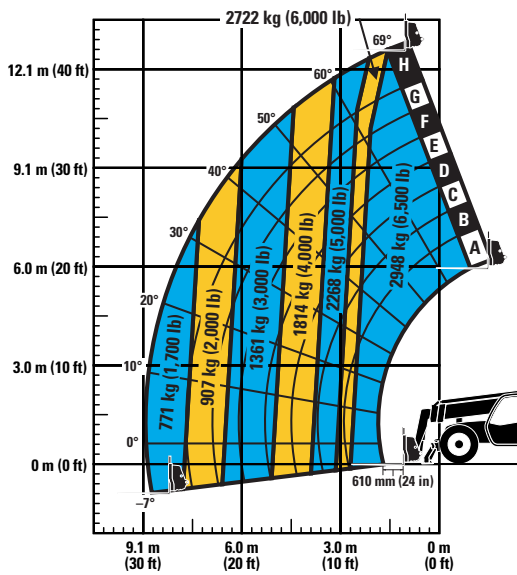


TL642D Telehandler with Stabilizers

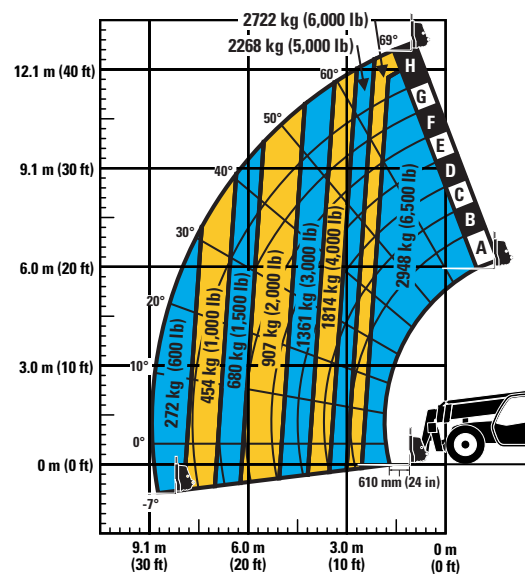
Dimensions (All dimensions are approximate.)



Load Chart and Dimensions



Stabilizers Down



Stabilizers Up

IMPORTANT

Rated lift capacities shown are with machine equipped with carriage and pallet forks. The machine must be level on a firm surface with undamaged, properly inflated tires. Machine specifications and stability are based on rated lift capacities at specific boom angles and boom lengths. (If specifications are critical, the proposed application should be discussed with your dealer.)

DO NOT exceed rated lift capacity loads, as unstable and dangerous machine conditions will result.

DO NOT tip the machine forward to determine the allowable load.

Use only approved attachments with proper material handler model/attachment load capacity charts displayed in the operator's cab. OSHA requires all rough

terrain forklift operators be trained according to OSHA 29 CFR 1910.178 (1).

Due to continuous product improvements, machine specifications and/or equipment changes may be made without prior notification. This machine meets or exceeds ANSI/ITSDF B56.6-2011 as originally manufactured for intended applications.

For more complete information on Cat products, dealer services, and industry solutions, visit us on the web at www.cat.com

AEHQ7767 (12-2015)

© 2015 Caterpillar
All rights reserved

Materials and specifications are subject to change without notice. Featured machines in photos may include additional equipment. See your Cat dealer for available options.

CAT, CATERPILLAR, SAFETY.CAT.COM, their respective logos, "Caterpillar Yellow" and the "Power Edge" trade dress, as well as corporate and product identity used herein, are trademarks of Caterpillar and may not be used without permission.

