

# 352F L

Long Reach Excavation  
Hydraulic Excavator



## Engine

Engine Model	Cat® C13 ACERT™	
Power – ISO 9249	304 kW	413 PS
Power – ISO 14396	317 kW	431 PS

## Drive

Maximum Travel Speed	4.7 km/h
Maximum Drawbar Pull	330 kN

## Weights

Maximum Weight	59 400 kg
----------------	-----------

**The 352F Long Reach is built to take on your up-close and far-out excavating tasks.**

**The 52-ton machine features a variable gauge undercarriage that retracts for transport and expands to help increase stability and lift capability, particularly helpful when you do a lot of work over the side.**

**Where the real power comes in is through the integrated engine, hydraulic, and work tool systems. You can move tons of material – literally – every hour, on the hour, all day long with a great deal of speed, precision, and efficiency.**

**When you add in a quiet operator environment that keeps you comfortable and productive, ground level service points that make your routine maintenance easy, and multiple Cat work tools that help you take on a variety of jobs, you simply won't find a better 52-ton machine.**

## **Contents**

Key Features .....	2
Specifications .....	4
Standard Equipment .....	15
Optional Equipment .....	16
Notes .....	17

**Following are the built-in benefits that make 352F Long Reach an outstanding performer and an excellent choice for your line of work:**



### **Engine**

- C13 ACERT engine meets EU Stage IV emission standards.
- Emissions package works behind the scenes without interrupting your job.
- Engine speed control automatically lowers rpm when the machine doesn't need it to help you save fuel.
- Three power modes – high, standard, and eco – and automatic engine idle shutdown help you more actively manage fuel consumption.

### **Hydraulics**

- Major hydraulic components are located close together so shorter tubes and lines can be used, leading to less friction loss, reduced pressure drops, and more power to the ground.
- Main control valve opens slowly when the range of joystick lever movement is small and opens rapidly when movement is high, putting flow where you need it when you need it for smoother operation and greater efficiency.
- Electric boom and stick regeneration keeps oil flow at the head and rod ends of the cylinders instead of going back to the tank, resulting in less pressure loss for higher controllability, more productivity, and lower operating costs.
- Heavy lift mode increases machine system pressure to improve lift and reduces engine speed and pump flow in order to improve controllability.
- SmartBoom™ technology reduces stress and vibrations transmitted to the machine during rock scraping, hammer work and truck loading resulting in greater productivity and fuel efficiency.

# Key Features

Benefits to help get your work done efficiently and effectively



## Cab

- Full-size roll-over protective structure (ROPS) cab is both quiet and comfortable.
- Automatic climate control system maintains consistent cab temperature.
- Joysticks, armrests, and seats adjust to your preference.
- Seats include heated and cooled options.
- LED monitor is programmable in 42 languages.
- Drink holder, storage areas, and auxiliary power outlets are in easy-to-reach areas.



## Work Tools

- Multiple Cat Work Tools are available for a wide range of applications.
- Cat quick couplers allow you to switch from one tool to another in a matter of minutes.
- Cat tool control remembers pressures and flows for up to 10 tools that can be selected from the monitor so you can quickly get to work after each tool change.

## Serviceability

- Routine maintenance items like grease points, fluid taps, filters, and drain tubes can be reached at ground level.
- Compartment doors are designed to prevent debris entry, and they securely latch in place to enhance ease of service.
- Side-by-side cooling system is efficient and easy to clean, and is capable of being upgraded for high-ambient conditions.

## Technology Options

- Product Link™/VisionLink® connects you to your machine, providing access to its location, hours, fuel consumption, idle time, events, and diagnostic codes.

## Structures

- Long Reach boom and stick provide extra reach needed for deep digging and truck loading.
- Upper frame is built with special mounts to support the ROPS cab.
- Lower frame is reinforced to enhance component durability.
- Track shoes, links, rollers, idlers, and final drives are built with high-tensile-strength steel.
- Grease-lubricated track link prevents dirt and debris from entering.

# 352F L Long Reach Excavation Hydraulic Excavator Specifications

## Engine

Engine Model	Cat C13 ACERT	
Gross Power – SAE J1995	322 kW	438 PS
Power – ISO 9249	304 kW	413 PS
Power – ISO 14396	317 kW	431 PS
Bore	130 mm	
Stroke	157 mm	
Displacement	12.5 L	

## Hydraulic System

Maximum Flow		
Main System	770 L/min	
Swing System	385 L/min	
Pilot System	27 L/min	
Auxiliary Circuit – High Pressure	300 L/min	
Auxiliary Circuit – Medium Pressure	45 L/min	
Maximum Pressure		
Equipment	35 000 kPa	
Equipment (heavy lift)	38 000 kPa	
Travel	35 000 kPa	
Swing	27 500 kPa	
Pilot System	4120 kPa	
Boom Cylinder		
Bore	170 mm	
Stroke	3748 mm	
Stick Cylinder		
Bore	190 mm	
Stroke	4306 mm	
B1 Bucket Cylinder		
Bore	120 mm	
Stroke	2788 mm	

## Drive

Maximum Gradeability	30°/70%	
Maximum Travel Speed	4.7 km/h	
Maximum Drawbar Pull	330 kN	

## Swing Mechanism

Swing Speed	8.7 rpm
Swing Torque	148.5 kN·m

## Service Refill Capacities

Fuel Tank Capacity	720 L
Cooling System	50 L
Engine Oil (with filter)	38 L
Swing Drive (each)	10 L
Final Drive (each)	15 L
Hydraulic System Oil (including tank)	570 L
Hydraulic Tank Oil	407 L
DEF Tank	41 L

## Track

Track Options	600 mm 700 mm 900 mm
Number of Shoes (each side)	52
Number of Track Rollers (each side)	9
Number of Carrier Rollers (each side)	3

## Sound Performance

Operator Sound Pressure Level – ISO 6396:2008*	69 dB(A)
Exterior Sound Power Level – ISO 6395:2008*	106 dB(A)

\* As per European Union Directive 2005/14/EC as amended by 2005/88/EC.

- When properly installed and maintained, the cab offered by Caterpillar, when tested with doors and windows closed according to ANSI/SAE J1166 OCT98, meets OSHA and MSHA requirements for operator sound exposure limits in effect at time of manufacture.
- Hearing protection may be needed when operating with an open operator station and cab (when not properly maintained or doors/windows open) for extended periods or in noisy environment.

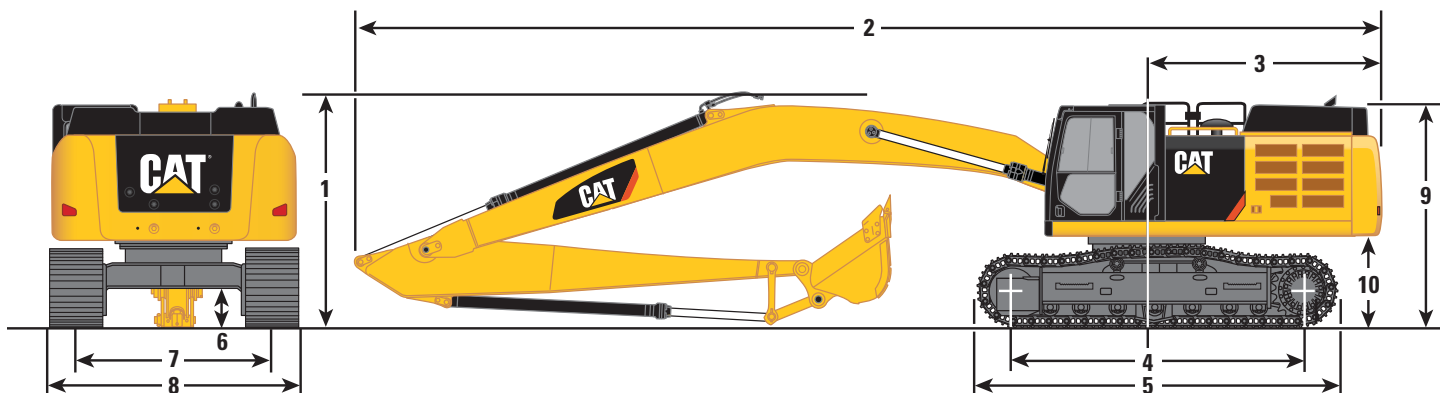
## Standards

Brakes	ISO 10265
Cab/FOGS	SAE J1356 ISO 10262:1998
Cab/ROPS	ISO 12117-2
DEF	ISO 22241

# 352F L Long Reach Excavation Hydraulic Excavator Specifications

## Dimensions

All dimensions are approximate.



<b>Boom Option</b>	<b>LRE Boom</b>
	<b>11.5 m</b>
<b>Stick Option</b>	<b>LRE Stick</b>
	<b>8.5 m</b>
<b>1 Shipping Height*</b>	3530 mm
<b>2 Shipping Length</b>	16 460 mm
<b>3 Tail Swing Radius</b>	3760 mm
<b>4 Length to Center of Rollers</b>	4340 mm
<b>5 Track Length</b>	5380 mm
<b>6 Ground Clearance (including shoe lug height)</b>	710 mm
Ground Clearance (not including shoe lug height)	740 mm
<b>7 Track Gauge</b>	
Expanded	3720 mm
Retracted	3220 mm
<b>8 Transport Width (expanded)</b>	
600 mm Shoes	4320 mm
750 mm Shoes	4470 mm
900 mm Shoes	4620 mm
Transport Width (retracted)	
600 mm Shoes	3820 mm
750 mm Shoes	3970 mm
900 mm Shoes	4120 mm
<b>9 Cab Height</b>	3390 mm
<b>10 Counterweight Clearance**</b>	1450 mm
Bucket Type	GD
Bucket Capacity	0.93 m <sup>3</sup>
Bucket Tip Radius	1573 mm

\*Including shoe lug height.

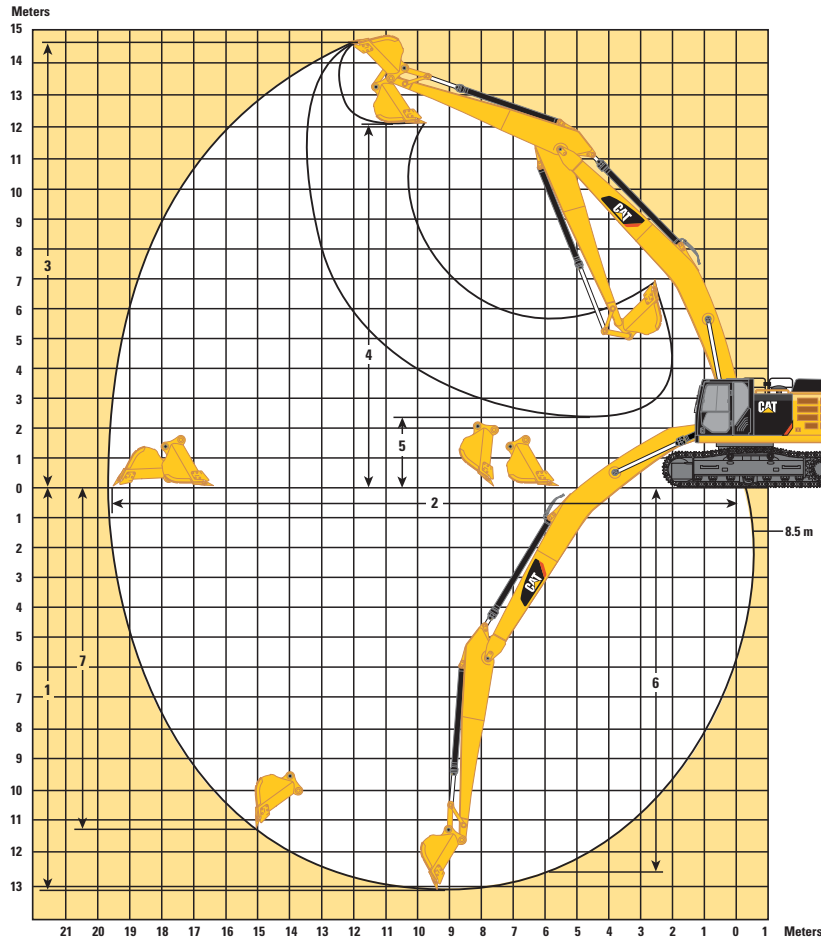
\*\*Without shoe lug height.

Dimensions may vary depending on bucket selection.

# 352F L Long Reach Excavation Hydraulic Excavator Specifications

## Working Ranges

All dimensions are approximate.



### Boom Option

**LRE Boom**  
11.5 m

### Stick Option

**LRE Stick**  
8.5 m

<b>1</b> Maximum Digging Depth	13 040 mm
<b>2</b> Maximum Reach at Ground Level	19 640 mm
Maximum Radius of Working Equipment	19 790 mm
<b>3</b> Maximum Cutting Height	14 700 mm
<b>4</b> Maximum Loading Height	12 030 mm
<b>5</b> Minimum Loading Height	2250 mm
<b>6</b> Maximum Depth Cut for 2440 mm Level Bottom	12 600 mm
<b>7</b> Maximum Vertical Wall Digging Depth	11 280 mm
Bucket Type	GD
Bucket Capacity	0.93 m <sup>3</sup>
Bucket Tip Radius	1573 mm
Bucket Digging Force (ISO)	141 kN
Stick Digging Force (ISO)	104 kN

Dimensions may vary depending on bucket selection.

# 352F L Long Reach Excavation Hydraulic Excavator Specifications

## Operating Weights and Ground Pressures

LRE Boom	LRE Stick	Bucket	900 mm		750 mm		600 mm	
			Triple Grouser Shoes	kg	kPa	Triple Grouser Shoes	kg	kPa
11.5 m	8.5 m	0.93 m <sup>3</sup>	59 400	69	58 600	82	57 800	101

## Major Component Weights

	kg
Base Machine (with boom cylinder, without counterweight, front linkage and track)	29 844
Counterweight	12 000
Boom (includes lines, pins and stick cylinder)	
LRE Boom – 11.5 m	5800
Stick (includes lines, pins, bucket linkage and bucket cylinder)	
LRE Stick – 8.5 m	3300
Track Shoe (per two tracks)	
600 mm Triple Grouser	5190
750 mm Triple Grouser	5940
900 mm Triple Grouser	6700
Bucket	
0.93 m <sup>3</sup>	710

Base machine includes 75 kg operator weight, 90% fuel weight and undercarriage with center guard.

# 352F L Long Reach Excavation Hydraulic Excavator Specifications

## 352F L Bucket Specifications and Compatibility

	Linkage	Width	Capacity	Weight	Fill	Long Reach Excavation
		mm	m <sup>3</sup>	kg	%	
<b>Without Pin Grabber Coupler</b>						
General Duty (GD)	B	1200	1.19	800	100	●
	B	1300	1.30	832	100	●
Ditch Cleaning (DC)	<b>B</b>	<b>1800</b>	<b>1.24</b>	<b>740</b>	<b>100</b>	●
	B	2010	1.18	800	100	●
Tilting Ditch Cleaning (TDC)	B	2010	1.15	1095	100	●
Maximum load pin on (payload + bucket)					kg	3500
<b>With Pin Grabber Coupler</b>						
General Duty (GD)	B	1200	1.19	800	100	⊙
	B	1300	1.30	832	100	⊙
Ditch Cleaning (DC)	<b>B</b>	<b>1800</b>	<b>1.24</b>	<b>740</b>	<b>100</b>	⊙
	B	2010	1.18	800	100	⊙
Tilting Ditch Cleaning (TDC)	B	2010	1.15	1095	100	⊙
Maximum load pin on (payload + bucket)					kg	3500
<b>With Quick Coupler (CW40)</b>						
General Duty (GD)	B	1050	1.00	704	100	●
	B	1200	1.19	764	100	●
Ditch Cleaning (DC)	B	2000	1.27	696	100	●
Maximum load with coupler (payload + bucket)					kg	2345

The above loads are in compliance with hydraulic excavator standard EN474, they do not exceed 87% of hydraulic lifting capacity or 75% of tipping capacity with front linkage fully extended at ground line with bucket curled.

Capacity based on ISO 7451.

Bucket weight with long tips.

### Maximum Material Density

● 2100 kg/m<sup>3</sup>

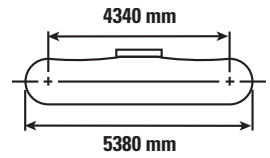
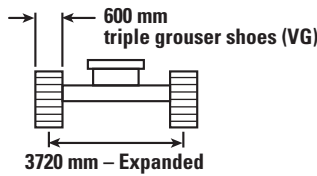
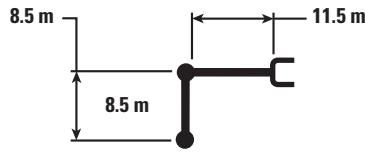
⊙ 1800 kg/m<sup>3</sup>

Caterpillar recommends using appropriate work tools to maximize the value customers receive from our products. Use of work tools, including buckets, which are outside of Caterpillar's recommendations or specifications for weight, dimensions, flows, pressures, etc. may result in less-than-optimal performance, including but not limited to reductions in production, stability, reliability, and component durability. Improper use of a work tool resulting in sweeping, prying, twisting and/or catching of heavy loads will reduce the life of the boom and stick.



# 352F L Long Reach Excavation Hydraulic Excavator Specifications

## Reach Boom Lift Capacities – Counterweight: 12.0 mt – without Bucket – Heavy Lift: On



		3000 mm		4500 mm		6000 mm		7500 mm		9000 mm		mm		
														mm
13 500 mm	kg											*2950	*2950	14 400
12 000 mm	kg											*2900	*2900	15 460
10 500 mm	kg											*2850	*2850	16 300
9000 mm	kg											*2900	*2900	16 970
7500 mm	kg											*2950	*2950	17 480
6000 mm	kg											*3050	*3050	17 860
4500 mm	kg											*3150	*3150	18 100
3000 mm	kg			*13 200	*13 200	*15 700	*15 700	*12 150	*12 150	*10 000	*10 000	*3350	*3350	18 210
1500 mm	kg			*7700	*7700	*17 100	*17 100	*13 100	*13 100	*10 650	*10 650	*3550	*3550	18 190
0 mm	kg	*4100	*4100	*7150	*7150	*13 250	*13 250	*13 750	13 300	*11 100	10 400	*3800	3600	18 060
-1500 mm	kg	*5450	*5450	*7750	*7750	*12 300	*12 300	*14 050	12 600	*11 400	9850	*4150	3600	17 790
-3000 mm	kg	*6800	*6800	*8800	*8800	*12 600	*12 600	*14 050	12 150	11 200	9450	4400	3700	17 390
-4500 mm	kg	*8150	*8150	*10 100	*10 100	*13 600	*13 600	*13 700	11 950	10 950	9250	4550	3800	16 840
-6000 mm	kg	*9600	*9600	*11 550	*11 550	*15 000	*15 000	*13 100	11 900	10 850	9150	4850	4050	16 130
-7500 mm	kg			*13 200	*13 200	*14 700	*14 700	*12 200	12 000	*10 250	9150	5250	4450	15 250
-9000 mm	kg			*15 100	*15 100	*12 950	*12 950	*10 900	*10 900	*9300	*9300	*5300	5000	14 140
-10 500 mm	kg							*9200	*9200	*7900	*7900	*5100	*5100	12 770



ISO 10567



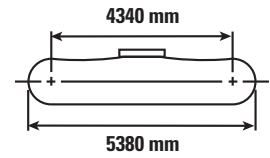
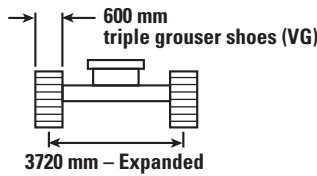
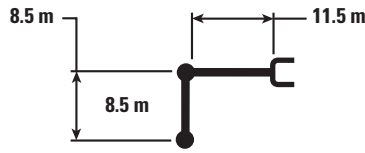
\*Indicates that the load is limited by hydraulic lifting capacity rather than tipping load. The above loads are in compliance with hydraulic excavator lift capacity standard ISO 10567:2007. They do not exceed 87% of hydraulic lifting capacity or 75% of tipping load. Weight of all lifting accessories must be deducted from the above lifting capacities. Lifting capacities are based on the machine standing on a firm, uniform supporting surface. The use of a work tool attachment point to handle/lift objects, could affect the machine lift performance.

Lift capacity stays with  $\pm 5\%$  for all available track shoes.

Always refer to the appropriate Operation and Maintenance Manual for specific product information.

# 352F L Long Reach Excavation Hydraulic Excavator Specifications

## Reach Boom Lift Capacities – Counterweight: 12.0 mt – without Bucket – Heavy Lift: On



		10 500 mm		12 000 mm		13 500 mm		15 000 mm		16 500 mm		18 000 mm		mm		
13 500 mm	kg													*2950	*2950	14 400
12 000 mm	kg							*3350	*3350					*2900	*2900	15 460
10 500 mm	kg							*4150	*4150					*2850	*2850	16 300
9000 mm	kg							*4750	*4750	*3500	*3500			*2900	*2900	16 970
7500 mm	kg					*5950	*5950	*5350	*5350	*4200	*4200			*2950	*2950	17 480
6000 mm	kg			*6750	*6750	*6150	*6150	*5700	*5700	*4800	*4800			*3050	*3050	17 860
4500 mm	kg	*8000	*8000	*7100	*7100	*6400	*6400	*5850	5650	*5400	4750	*3350	*3350	*3150	*3150	18 100
3000 mm	kg	*8500	*8500	*7450	*7450	*6650	6450	*6050	5400	5300	4550	*3700	*3700	*3350	*3350	18 210
1500 mm	kg	*8950	*8950	*7800	7350	*6900	6150	6050	5150	5150	4400	*3950	3750	*3550	*3550	18 190
0 mm	kg	*9350	8400	*8050	6950	6800	5850	5800	4950	5000	4250	*3950	3650	*3800	3600	18 060
-1500 mm	kg	9400	8000	7800	6650	6550	5600	5600	4750	4850	4100			*4150	3600	17 790
-3000 mm	kg	9050	7650	7500	6350	6350	5400	5450	4600	4750	4000			4400	3700	17 390
-4500 mm	kg	8850	7450	7350	6200	6250	5250	5350	4500	4700	3950			4550	3800	16 840
-6000 mm	kg	8750	7350	7250	6100	6150	5200	5350	4500					4850	4050	16 130
-7500 mm	kg	*8750	7350	7250	6100	6200	5200	5350	4500					5250	4450	15 250
-9000 mm	kg	*7950	7450	*6800	6200	*5750	5300							*5300	5000	14 140
-10 500 mm	kg	*6750	*6750	*5650	*5650									*5100	*5100	12 770



ISO 10567



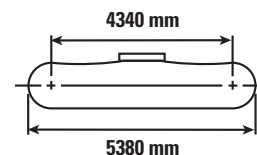
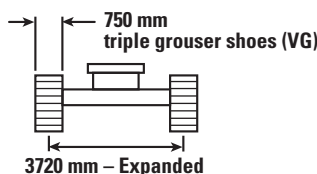
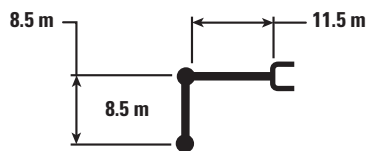
\*Indicates that the load is limited by hydraulic lifting capacity rather than tipping load. The above loads are in compliance with hydraulic excavator lift capacity standard ISO 10567:2007. They do not exceed 87% of hydraulic lifting capacity or 75% of tipping load. Weight of all lifting accessories must be deducted from the above lifting capacities. Lifting capacities are based on the machine standing on a firm, uniform supporting surface. The use of a work tool attachment point to handle/lift objects, could affect the machine lift performance.

Lift capacity stays with ±5% for all available track shoes.

Always refer to the appropriate Operation and Maintenance Manual for specific product information.

# 352F L Long Reach Excavation Hydraulic Excavator Specifications

## Reach Boom Lift Capacities – Counterweight: 12.0 mt – without Bucket – Heavy Lift: On



		3000 mm		4500 mm		6000 mm		7500 mm		9000 mm		mm		
13 500 mm	kg											*2950	*2950	14 400
12 000 mm	kg											*2900	*2900	15 460
10 500 mm	kg											*2850	*2850	16 300
9000 mm	kg											*2900	*2900	16 970
7500 mm	kg											*2950	*2950	17 480
6000 mm	kg											*3050	*3050	17 860
4500 mm	kg											*3150	*3150	18 100
3000 mm	kg			*13 200	*13 200	*15 700	*15 700	*12 150	*12 150	*10 000	*10 000	*3350	*3350	18 210
1500 mm	kg			*7700	*7700	*17 100	*17 100	*13 100	*13 100	*10 650	*10 650	*3550	*3550	18 190
0 mm	kg	*4100	*4100	*7150	*7150	*13 250	*13 250	*13 750	13 500	*11 100	10 550	*3800	3700	18 060
-1500 mm	kg	*5450	*5450	*7750	*7750	*12 300	*12 300	*14 050	12 800	*11 400	10 000	*4150	3700	17 790
-3000 mm	kg	*6800	*6800	*8800	*8800	*12 600	*12 600	*14 050	12 350	11 350	9600	4450	3750	17 390
-4500 mm	kg	*8150	*8150	*10 100	*10 100	*13 600	*13 600	*13 700	12 150	11 150	9400	4650	3900	16 840
-6000 mm	kg	*9600	*9600	*11 550	*11 550	*15 000	*15 000	*13 100	12 100	*10 900	9300	4900	4150	16 130
-7500 mm	kg			*13 200	*13 200	*14 700	*14 700	*12 200	12 200	*10 250	9300	*5350	4500	15 250
-9000 mm	kg			*15 100	*15 100	*12 950	*12 950	*10 900	*10 900	*9300	*9300	*5300	5100	14 140
-10 500 mm	kg							*9200	*9200	*7900	*7900	*5100	*5100	12 770



ISO 10567



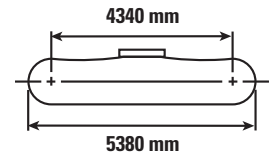
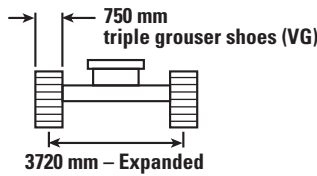
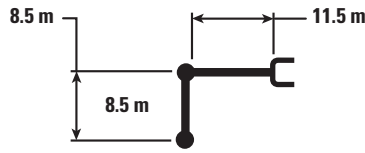
\*Indicates that the load is limited by hydraulic lifting capacity rather than tipping load. The above loads are in compliance with hydraulic excavator lift capacity standard ISO 10567:2007. They do not exceed 87% of hydraulic lifting capacity or 75% of tipping load. Weight of all lifting accessories must be deducted from the above lifting capacities. Lifting capacities are based on the machine standing on a firm, uniform supporting surface. The use of a work tool attachment point to handle/lift objects, could affect the machine lift performance.

Lift capacity stays with  $\pm 5\%$  for all available track shoes.

Always refer to the appropriate Operation and Maintenance Manual for specific product information.

# 352F L Long Reach Excavation Hydraulic Excavator Specifications

## Reach Boom Lift Capacities – Counterweight: 12.0 mt – without Bucket – Heavy Lift: On



		10 500 mm		12 000 mm		13 500 mm		15 000 mm		16 500 mm		18 000 mm		mm		
13 500 mm	kg													*2950	*2950	14 400
12 000 mm	kg							*3350	*3350					*2900	*2900	15 460
10 500 mm	kg							*4150	*4150					*2850	*2850	16 300
9000 mm	kg							*4750	*4750	*3500	*3500			*2900	*2900	16 970
7500 mm	kg					*5950	*5950	*5350	*5350	*4200	*4200			*2950	*2950	17 480
6000 mm	kg			*6750	*6750	*6150	*6150	*5700	*5700	*4800	*4800			*3050	*3050	17 860
4500 mm	kg	*8000	*8000	*7100	*7100	*6400	*6400	*5850	5750	*5400	4800	*3350	*3350	*3150	*3150	18 100
3000 mm	kg	*8500	*8500	*7450	*7450	*6650	6550	*6050	5500	5400	4650	*3700	*3700	*3350	*3350	18 210
1500 mm	kg	*8950	*8950	*7800	7500	*6900	6250	6100	5250	5250	4450	*3950	3800	*3550	*3550	18 190
0 mm	kg	*9350	8550	*8050	7050	6950	5950	5900	5050	5050	4300	*3950	3700	*3800	3700	18 060
-1500 mm	kg	9500	8100	7900	6750	6650	5700	5700	4850	4950	4150			*4150	3700	17 790
-3000 mm	kg	9200	7800	7650	6500	6450	5500	5550	4700	4850	4050			4450	3750	17 390
-4500 mm	kg	9000	7600	7450	6300	6350	5350	5450	4600	4750	4000			4650	3900	16 840
-6000 mm	kg	8900	7500	7400	6250	6250	5300	5450	4550					4900	4150	16 130
-7500 mm	kg	*8750	7500	7400	6250	6300	5300	5450	4600					*5350	4500	15 250
-9000 mm	kg	*7950	7600	*6800	6300	*5750	5400							*5300	5100	14 140
-10 500 mm	kg	*6750	*6750	*5650	*5650									*5100	*5100	12 770



ISO 10567



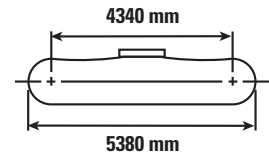
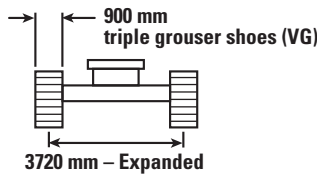
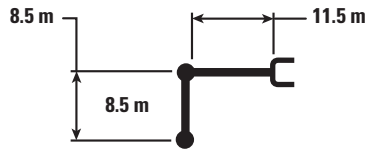
\*Indicates that the load is limited by hydraulic lifting capacity rather than tipping load. The above loads are in compliance with hydraulic excavator lift capacity standard ISO 10567:2007. They do not exceed 87% of hydraulic lifting capacity or 75% of tipping load. Weight of all lifting accessories must be deducted from the above lifting capacities. Lifting capacities are based on the machine standing on a firm, uniform supporting surface. The use of a work tool attachment point to handle/lift objects, could affect the machine lift performance.

Lift capacity stays with ±5% for all available track shoes.

Always refer to the appropriate Operation and Maintenance Manual for specific product information.

# 352F L Long Reach Excavation Hydraulic Excavator Specifications

## Reach Boom Lift Capacities – Counterweight: 12.0 mt – without Bucket – Heavy Lift: On



		3000 mm		4500 mm		6000 mm		7500 mm		9000 mm		mm		
														mm
13 500 mm	kg											*2950	*2950	14 400
12 000 mm	kg											*2900	*2900	15 460
10 500 mm	kg											*2850	*2850	16 300
9000 mm	kg											*2900	*2900	16 970
7500 mm	kg											*2950	*2950	17 480
6000 mm	kg											*3050	*3050	17 860
4500 mm	kg											*3150	*3150	18 100
3000 mm	kg			*13 200	*13 200	*15 700	*15 700	*12 150	*12 150	*10 000	*10 000	*3350	*3350	18 210
1500 mm	kg			*7700	*7700	*17 100	*17 100	*13 100	*13 100	*10 650	*10 650	*3550	*3550	18 190
0 mm	kg	*4100	*4100	*7150	*7150	*13 250	*13 250	*13 750	13 700	*11 100	10 750	*3800	3750	18 060
-1500 mm	kg	*5450	*5450	*7750	*7750	*12 300	*12 300	*14 050	13 000	*11 400	10 150	*4150	3750	17 790
-3000 mm	kg	*6800	*6800	*8800	*8800	*12 600	*12 600	*14 050	12 550	*11 500	9750	4550	3850	17 390
-4500 mm	kg	*8150	*8150	*10 100	*10 100	*13 600	*13 600	*13 700	12 350	11 300	9550	4700	3950	16 840
-6000 mm	kg	*9600	*9600	*11 550	*11 550	*15 000	*15 000	*13 100	12 300	*10 900	9450	5000	4200	16 130
-7500 mm	kg			*13 200	*13 200	*14 700	*14 700	*12 200	*12 200	*10 250	9500	*5350	4600	15 250
-9000 mm	kg			*15 100	*15 100	*12 950	*12 950	*10 900	*10 900	*9300	*9300	*5300	5200	14 140
-10 500 mm	kg							*9200	*9200	*7900	*7900	*5100	*5100	12 770



ISO 10567



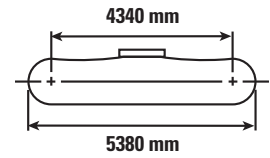
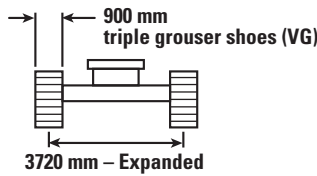
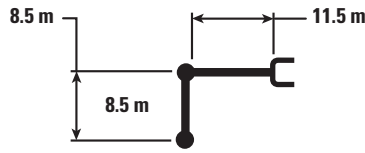
\*Indicates that the load is limited by hydraulic lifting capacity rather than tipping load. The above loads are in compliance with hydraulic excavator lift capacity standard ISO 10567:2007. They do not exceed 87% of hydraulic lifting capacity or 75% of tipping load. Weight of all lifting accessories must be deducted from the above lifting capacities. Lifting capacities are based on the machine standing on a firm, uniform supporting surface. The use of a work tool attachment point to handle/lift objects, could affect the machine lift performance.

Lift capacity stays with  $\pm 5\%$  for all available track shoes.

Always refer to the appropriate Operation and Maintenance Manual for specific product information.

# 352F L Long Reach Excavation Hydraulic Excavator Specifications

## Reach Boom Lift Capacities – Counterweight: 12.0 mt – without Bucket – Heavy Lift: On



		10 500 mm		12 000 mm		13 500 mm		15 000 mm		16 500 mm		18 000 mm		mm		
13 500 mm	kg													*2950	*2950	14 400
12 000 mm	kg							*3350	*3350					*2900	*2900	15 460
10 500 mm	kg							*4150	*4150					*2850	*2850	16 300
9000 mm	kg							*4750	*4750	*3500	*3500			*2900	*2900	16 970
7500 mm	kg					*5950	*5950	*5350	*5350	*4200	*4200			*2950	*2950	17 480
6000 mm	kg			*6750	*6750	*6150	*6150	*5700	*5700	*4800	*4800			*3050	*3050	17 860
4500 mm	kg	*8000	*8000	*7100	*7100	*6400	*6400	*5850	5850	*5400	4900	*3350	*3350	*3150	*3150	18 100
3000 mm	kg	*8500	*8500	*7450	*7450	*6650	*6650	*6050	5600	5500	4700	*3700	*3700	*3350	*3350	18 210
1500 mm	kg	*8950	*8950	*7800	7600	*6900	6350	*6200	5350	5300	4550	*3950	3850	*3550	*3550	18 190
0 mm	kg	*9350	8700	*8050	7200	7050	6050	6000	5100	5150	4400	*3950	3750	*3800	3750	18 060
-1500 mm	kg	*9550	8250	8050	6850	6800	5800	5800	4950	5000	4250			*4150	3750	17 790
-3000 mm	kg	9350	7950	7750	6600	6600	5600	5650	4800	4900	4150			4550	3850	17 390
-4500 mm	kg	9150	7700	7600	6450	6450	5450	5550	4700	4850	4100			4700	3950	16 840
-6000 mm	kg	9050	7600	7500	6350	6400	5400	5500	4650					5000	4200	16 130
-7500 mm	kg	*8750	7650	*7500	6350	6400	5400	*5500	4700					*5350	4600	15 250
-9000 mm	kg	*7950	7750	*6800	6450	*5750	5500							*5300	5200	14 140
-10 500 mm	kg	*6750	*6750	*5650	*5650									*5100	*5100	12 770



ISO 10567



\*Indicates that the load is limited by hydraulic lifting capacity rather than tipping load. The above loads are in compliance with hydraulic excavator lift capacity standard ISO 10567:2007. They do not exceed 87% of hydraulic lifting capacity or 75% of tipping load. Weight of all lifting accessories must be deducted from the above lifting capacities. Lifting capacities are based on the machine standing on a firm, uniform supporting surface. The use of a work tool attachment point to handle/lift objects, could affect the machine lift performance.

Lift capacity stays with ±5% for all available track shoes.

Always refer to the appropriate Operation and Maintenance Manual for specific product information.

# 352F L Long Reach Excavation Standard Equipment

## Standard Equipment

Standard equipment may vary. Consult your Cat dealer for details.

### ENGINE

- Cat C13 ACERT diesel engine
- Biodiesel capable, up to B20
- Meets EU Stage IV emission standards
- 2300 m altitude capability
- Electric priming pump with switch
- Automatic engine speed control
- Standard, economy and high power modes
- Air cleaner
- Side-by-side cooling system
- Radial seal air filter
- Primary filter with water separator and water separator indicator switch
- Fuel differential indicator switch in fuel line

### HYDRAULIC SYSTEM

- Regeneration circuit for boom and stick
- Reverse swing dampening valve
- Automatic swing parking brake
- High-performance hydraulic return filter
- Capability of installing additional auxiliary circuits
- Boom and stick lowering control devices with SmartBoom

### CAB

- Parallel wiper and washer
- Mirrors
- Pressurized operator station with positive filtration
- Laminated glass front upper window and tempered other windows
- Sliding upper door window (left-hand cab door)
- Openable skylight
- Interior
  - Glass-breaking safety hammer
  - Coat hook
  - Beverage holder
  - Literature holder
  - Interior lighting
  - AM/FM radio mounting (DIN size)
  - Two 12V stereo speakers
  - Storage shelf suitable for lunch or toolbox
  - Power supply with 12V, two power outlets (10 amp)
  - Thumb wheel modulation joystick for use with combined auxiliary control
  - Sunscreen
  - Air conditioner, heater and defroster with climate control
- Seat
  - Adjustable high back, heated and ventilated seat with air suspension
  - Seat belt, 51 mm
  - Adjustable armrest
  - Height adjustable joystick consoles
  - Neutral lever (lock out) for all controls
  - Travel control pedals with removable hand levers
  - Capability of installing two additional pedals
  - Two speed travel
  - Floor mat, washable
- Monitor
  - Clock
  - Video ready
  - Color LCD display with warning, filter/fluid change, and working hour information
  - Language display (full graphic and full color display)
  - Machine condition, error code and tool mode setting information
  - Start-up level check for engine oil, engine coolant and hydraulic oil
  - Warning, filter/fluid change and working hour information
  - Fuel consumption meter

### FRONT LINKAGE

- Long Reach Excavation boom, 11.5 m
- Long Reach Excavation stick, 8.5 m
- B1 Bucket linkage (with lifting eye)

### COUNTERWEIGHT

- 12 mt

### UNDERCARRIAGE

- Grease Lubricated Track with PPR2
- Towing eye on base frame
- Heavy-duty track rollers and idlers
- Track motor guards
- Heavy-duty bottom guard
- Swivel guard

### ELECTRICAL

- 80 amp alternator
- Circuit breaker
- Standard battery

### LIGHTS

- Cab and boom lights with time delay
- Exterior lights integrated into storage box

### SAFETY AND SECURITY

- Cat one key security system
- Door locks
- Cap locks on fuel and hydraulic tanks
- Lockable external tool/storage box
- Signaling/warning horn
- Secondary engine shutoff switch
- Openable skylight for emergency exit
- Rear vision camera
- Capability to connect a beacon
- Bolt on FOGS capability
- Safety hammer for breaking cab glass

### INTEGRATED TECHNOLOGIES

- Product Link
- Rear vision camera

# 352F L Long Reach Excavation Optional Equipment

## Optional Equipment

Optional equipment may vary. Consult your Cat dealer for details.

### ENGINE

- Jump start receptacle
- Quick drains, engine and hydraulic oil (QuickEvac™)

### HYDRAULIC SYSTEM

- HP hydraulic lines for boom and stick
- MP hydraulic lines for boom and stick
- QC hydraulic lines for boom and stick
- Universal QC Control

### ELECTRICAL

- Cold weather starting package, 240V, -32° C
- Travel alarm
- Electric refueling pump with auto shut off with storage box

### CAB

- Windshield
  - 70-30 split, sliding, removable lower windshield with in cab storage bracket
  - One-piece, fixed
- Cab front rain protector

### TRACK

- 600 mm triple grouser shoes
- 750 mm triple grouser shoes
- 900 mm triple grouser shoes

### GUARDS

- FOGS (Falling Object Guard system) including overhead and windshield guards
- Track guiding guards
  - Full length (2 piece)
  - Segmented (3 piece)

### LIGHTS

- Cab working lights, halogen
- Boom working lights, halogen

### SAFETY AND SECURITY

- FOGS, bolt-on









For more complete information on Cat products, dealer services, and industry solutions, visit us on the web at [www.cat.com](http://www.cat.com)

AEHQ7672 (11-2015)  
(EU)

© 2015 Caterpillar  
All rights reserved

Materials and specifications are subject to change without notice. Featured machines in photos may include additional equipment. See your Cat dealer for available options.

CAT, CATERPILLAR, SAFETY.CAT.COM, their respective logos, "Caterpillar Yellow" and the "Power Edge" trade dress, as well as corporate and product identity used herein, are trademarks of Caterpillar and may not be used without permission.

VisionLink is a trademark of Trimble Navigation Limited, registered in the United States and in other countries.

