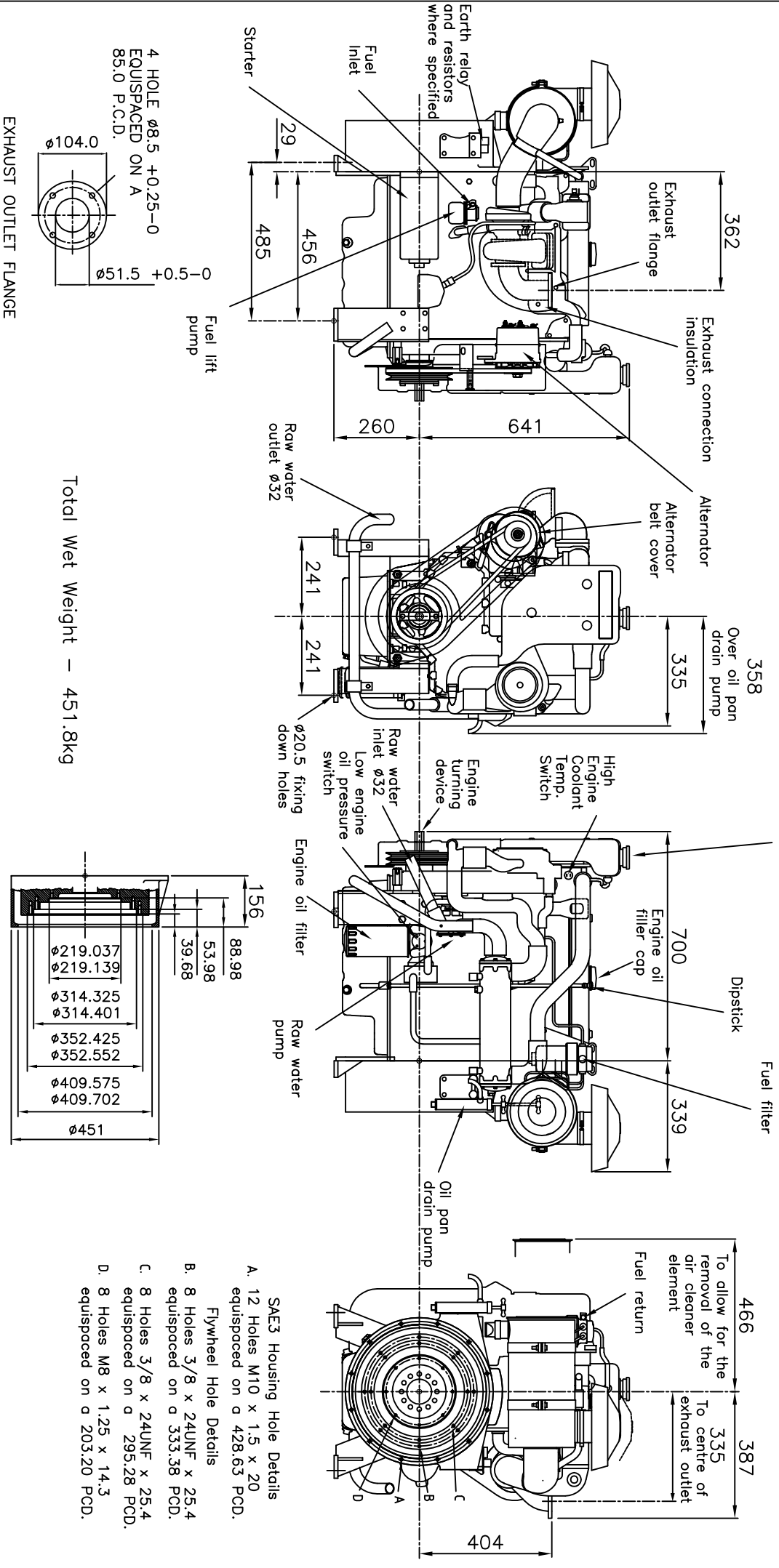


Perkins Sabre 4TGM Marine Diesel Engine

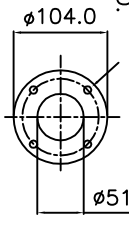
For genset and constant speed applications.

CATERPILLAR MARINE POWER UK LTD
 Wimborne, Dorset, England.
 Tel. +44(0)1202 893720
 Fax. +44(0)1202 851700
 E-mail. Wimborne_MPC_post@cat.com
 www.Perkins-Sabre.com



Total Wet Weight - 451.8kg

EXHAUST OUTLET FLANGE



4 HOLE Ø8.5 +0.25-0
 EQUISPACED ON A
 85.0 P.C.D.

Fuel lift pump

Coolant filler cap

Section through SAE3 housing and flywheel

SAE3 Housing Hole Details
 A. 12 Holes M10 x 1.5 x 20
 equispaced on a 428.63 PCD.
 Flywheel Hole Details
 B. 8 Holes 3/8 x 24UNF x 25.4
 equispaced on a 333.38 PCD.
 C. 8 Holes 3/8 x 24UNF x 25.4
 equispaced on a 295.28 PCD.
 D. 8 Holes M8 x 1.25 x 14.3
 equispaced on a 203.20 PCD.