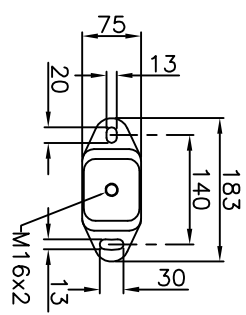
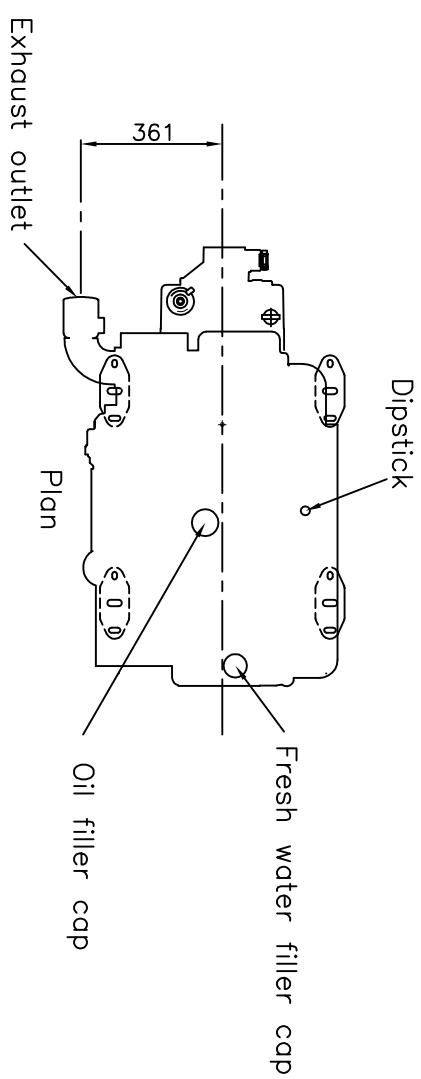
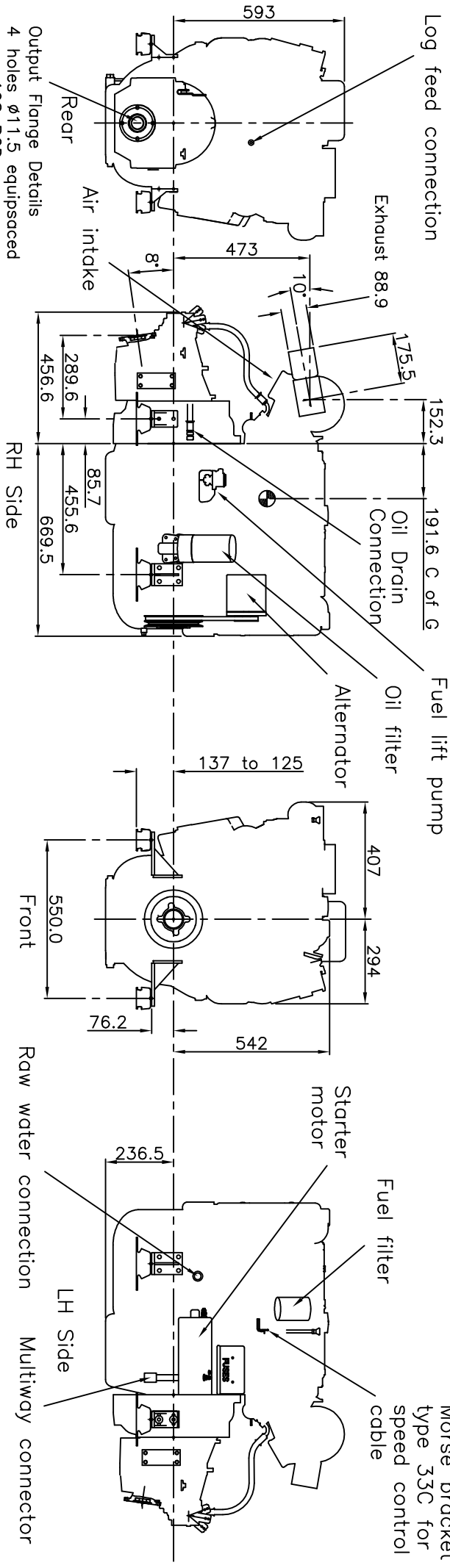


Perkins Sabre M115T Marine Diesel Engine shown with Hurth 450A gearbox with reduction ratios up to and including 2:1 (550mm transverse mounting centres)

CATERPILLAR MARINE POWER UK LTD
 Wimborne, Dorset, England.
 Tel. +44(0)1202 893720
 Fax. +44(0)1202 851700
 E-mail: Wimborne_MPC_post@cat.com
 www.Perkins-Sabre.com



FLEXIBLE ENGINE MOUNT
 Weights on each mount:
 Front - 117kg per mount
 Back - 112kg per mount
 Total Wet Weight - 458kg



Output Flange Details
 4 holes $\phi 11.5$ equispaced
 on a 108 PCD
 Flange OD 127
 Femle location $\phi 63.5H8$
 x 5 deep