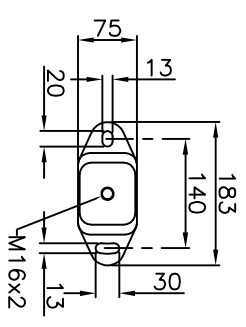
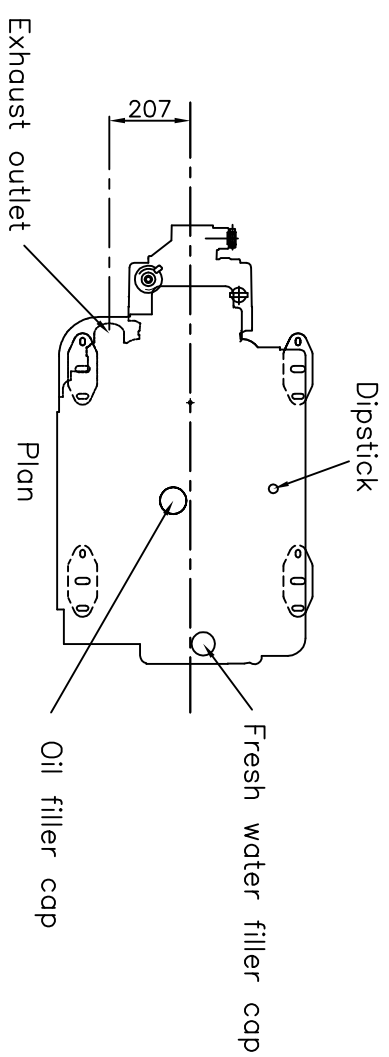
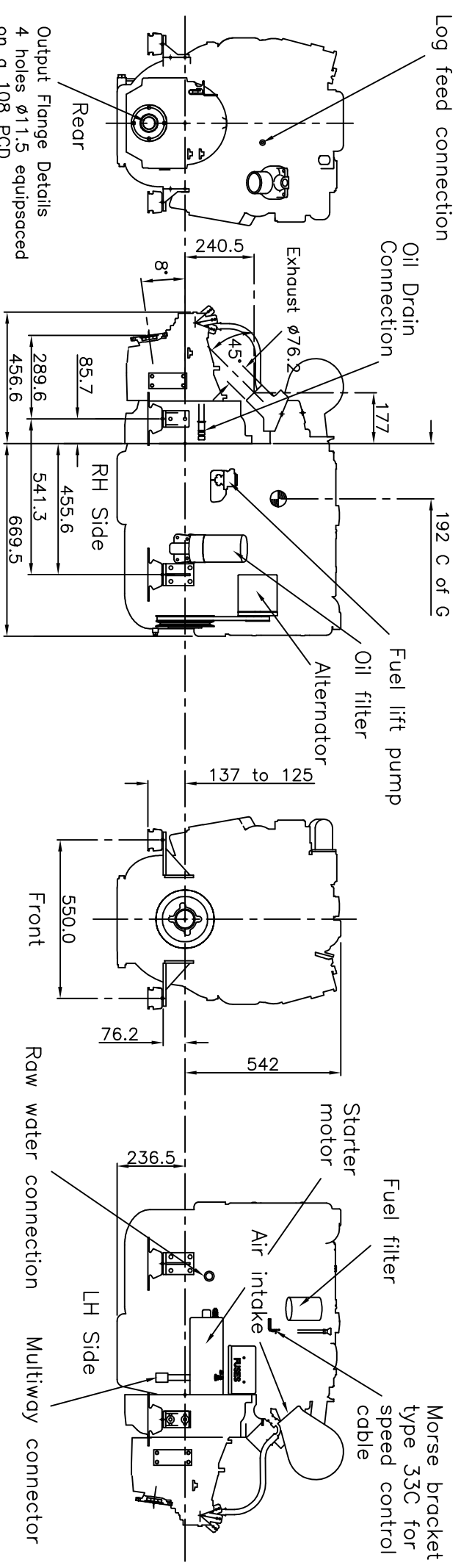


Perkins Sabre M92 Marine Diesel Engine shown with Hurth 450A gearbox with reduction ratios up to and including 2:1 (550mm transverse mounting centres)

CATERPILLAR MARINE POWER UK LTD
 Wimborne, Dorset, England.
 Tel. +44(0)1202 893720
 Fax. +44(0)1202 851700
 E-mail. Wimborne_MPC_post@cat.com
 www.Perkins-Sabre.com



FLEXIBLE ENGINE MOUNT
 Weights on each mount:
 Front - 116.2kg per mount
 Back - 111.3kg per mount
 Total Wet Weight - 455kg



Output Flange Details
 4 holes $\phi 11.5$ equispaced on a 108 PCD
 Flange OD 127
 Female location $\phi 63.5$ H8 x 5 deep