

Perkins Sabre M65 Marine Diesel Engine
 with the ZF25M (HBW250) gearbox
 (Ratios 1.88:1 & 2.74:1)
 (Mounting Centres at 460mm)

CATERPILLAR MARINE POWER UK LTD

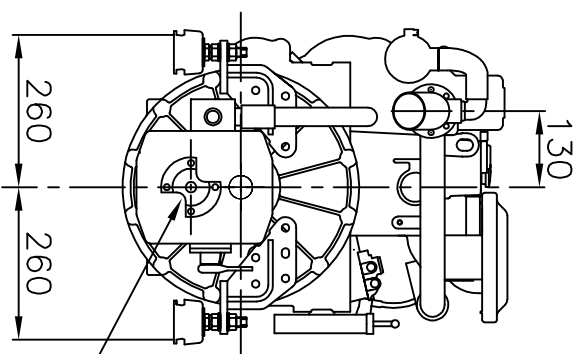
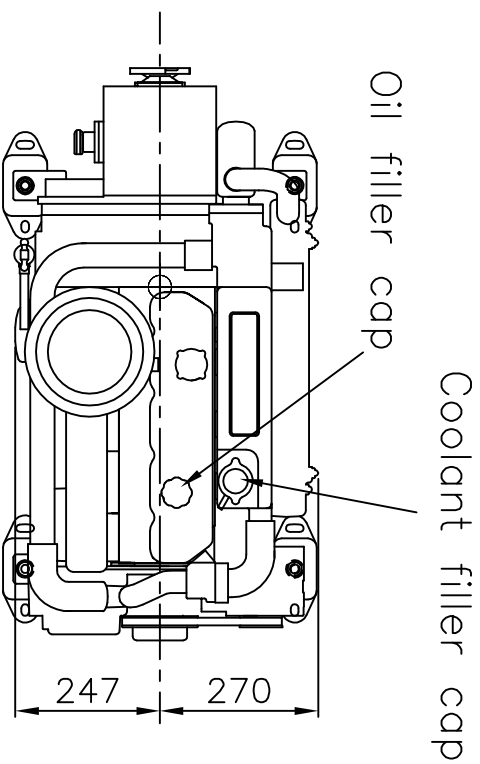
Wimborne, Dorset, England.

Tel. +44(0)1202 893720

Fax. +44(0)1202 851700

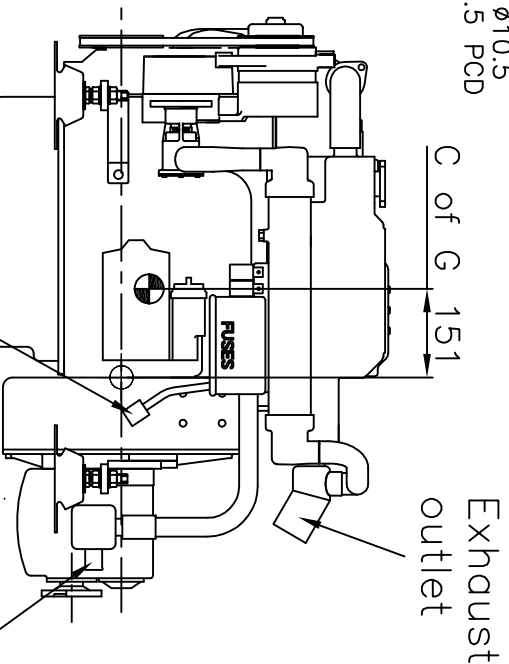
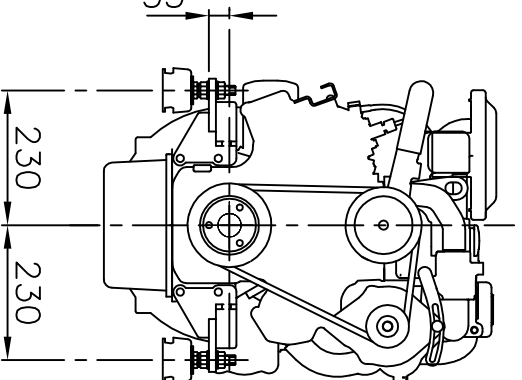
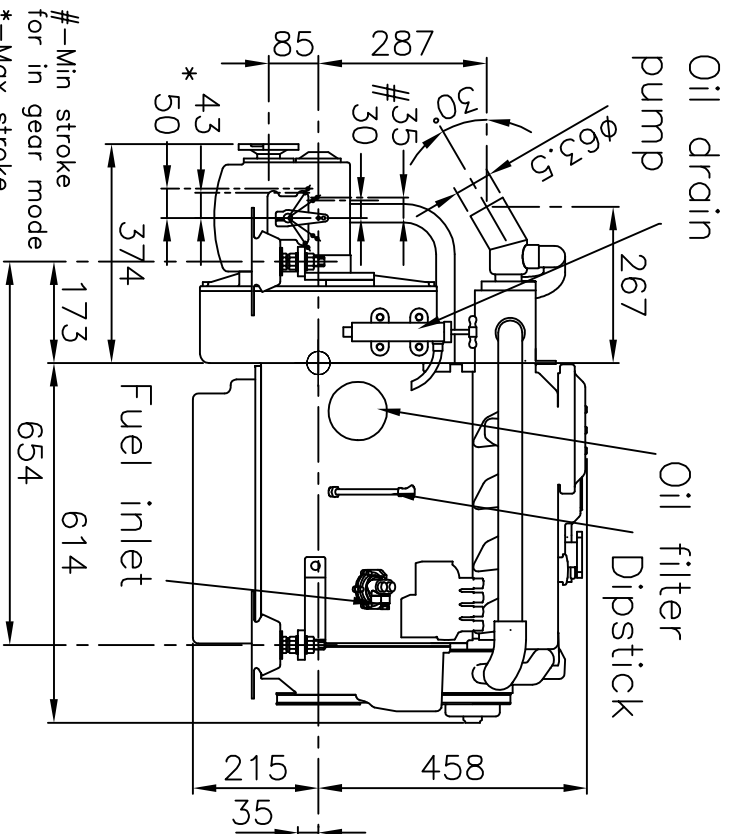
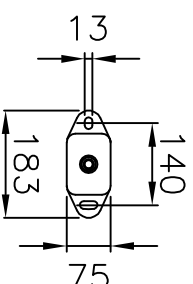
E-mail. Wimborne_MPC_post@cat.com

www.Perkins-Sabre.com



Flange detail
 102 o.d
 ϕ 63.5H8 location
 4 Holes ϕ 10.5
 on a 82.5 PCD

FLEXIBLE ENGINE MOUNT
 Weights on each mount
 Front – 78.9kg per mount
 Back – 80.4kg per mount
 Total Wet Weight 318.4kg



#-Min stroke for in gear mode
 *-Max stroke when in gear

Doc 7130-6-01