



Cat[®] 226D

SKID STEER LOADER

FEATURES:

The Cat[®] 226D Skid Steer Loader, with its radial lift design, delivers impressive mid-lift reach and excellent digging performance with outstanding drawbar power. The 226D features the following:

- **Industry leading sealed and pressurized cab option** provides a cleaner and quieter operating environment with excellent work tool visibility.
- **Available high-back, heated, air ride seat with seat mounted adjustable joystick controls** makes the D Series the industry leader in operator comfort.
- **High performance power train** provides maximum performance and production capability through the Electronic Torque Management system, optional two speed travel and an electronic hand/foot throttle with decel pedal capability.
- **High Flow hydraulic system** is available for applications that demand maximum hydraulic work tool performance.
- **Electronically controlled Cat C2.2 engine** provides high horsepower and torque while meeting U.S. EPA Tier 4 Final (EU Stage IIIB) emission standards.
- **Cat "Intelligent Leveling" system (ILEV)** provides industry leading technology, integration and optional features such as dual direction self level, work tool return to dig and work tool positioner.
- **Speed Sensitive Ride Control option** improves operation on rough terrain, enabling better load retention, increased productivity and greater operator comfort.
- **Maximize machine capability and control** with optional Advanced Display providing on-screen adjustments for implement response, hystat response and creep control. Also features multi-language functionality with customizable layouts, security system and rearview camera.
- **Ground level access** to all daily service and routine maintenance points helps reduce machine downtime for greater productivity.
- **Broad range of performance matched Cat Work Tools** make the Cat Skid Steer Loader the most versatile machine on the job site.

Specifications

Engine

| Engine Model | Cat C2.2 CRDI | |
|------------------------------------|---------------|-----------------------|
| Gross Power SAE J1995 | 50.1 kW | 67.1 hp |
| Net Power SAE 1349 | 49.1 kW | 65.8 hp |
| Net Power ISO 9249 | 49.6 kW | 66.5 hp |
| Peak Torque at 1,500 rpm SAE J1995 | 208 N-m | 153 lbf-ft |
| Displacement | 2.2 L | 134.3 in ³ |
| Stroke | 100 mm | 3.9 in |
| Bore | 84 mm | 3.3 in |

Weights*

| | | |
|------------------|---------|----------|
| Operating Weight | 2588 kg | 5,705 lb |
|------------------|---------|----------|

Power Train

| Travel Speed (Forward or Reverse): | | |
|------------------------------------|-----------|----------|
| One Speed | 12.3 km/h | 7.6 mph |
| Two Speed Option | 17.8 km/h | 11.1 mph |

Operating Specifications*

| | | |
|--|---------|----------|
| Rated Operating Capacity | 703 kg | 1,550 lb |
| Rated Operating Capacity with Optional Counterweight | 749 kg | 1,650 lb |
| Tipping Load | 1407 kg | 3,100 lb |
| Breakout Force, Tilt Cylinder | 1807 kg | 3,983 lb |

Hydraulic System

| Hydraulic Flow – Standard: | | | |
|-----------------------------------|------------|------------|--|
| Loader Hydraulic Pressure | 23 000 kPa | 3,336 psi | |
| Loader Hydraulic Flow | 69 L/min | 18 gal/min | |
| Hydraulic Power (calculated) | 26.5 kW | 35.5 hp | |
| Hydraulic Flow – High Flow: | | | |
| Maximum Loader Hydraulic Pressure | 23 000 kPa | 3,336 psi | |
| Maximum Loader Hydraulic Flow | 99 L/min | 26 gal/min | |
| Hydraulic Power (calculated) | 38.0 kW | 50.9 hp | |

Cab

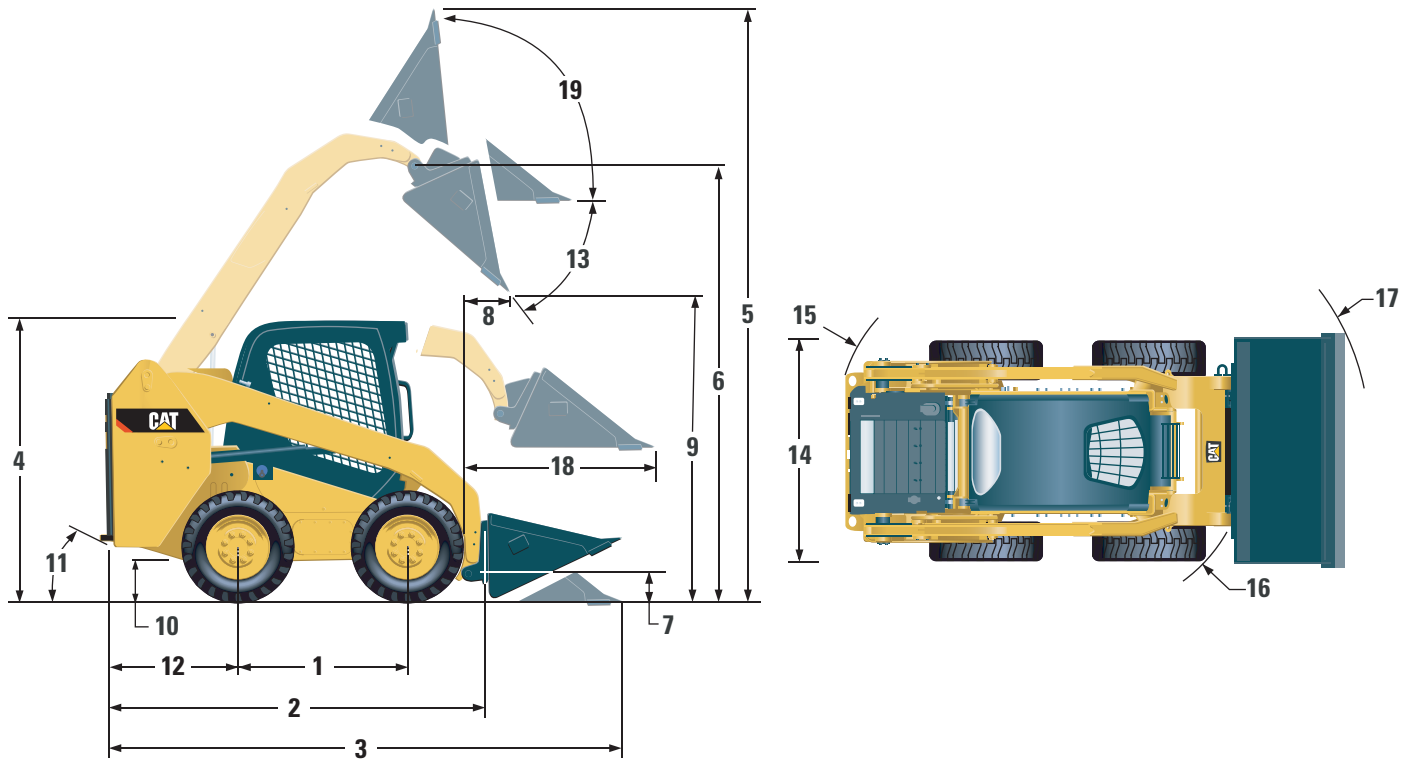
| | |
|---------------|------------------------|
| ROPS | ISO 3471:2008 |
| FOPS | ISO 3449:2005 Level I |
| FOPS Level II | ISO 3449:2005 Level II |

Service Refill Capacities

| | | |
|----------------------|------|----------|
| Chain Box, each side | 7 L | 1.8 gal |
| Cooling System | 12 L | 3.2 gal |
| Engine Crankcase | 10 L | 2.6 gal |
| Fuel Tank | 57 L | 15.1 gal |
| Hydraulic System | 45 L | 11.9 gal |
| Hydraulic Tank | 34 L | 9.0 gal |



226D Skid Steer Loader



Dimensions*

| | | | |
|----|--|---------|----------|
| 1 | Wheelbase | 1054 mm | 41.5 in |
| 2 | Length without Bucket | 2524 mm | 99.4 in |
| 3 | Length with Bucket on Ground | 3234 mm | 127.3 in |
| 4 | Height to Top of Cab | 2028 mm | 79.8 in |
| 5 | Maximum Overall Height | 3652 mm | 143.8 in |
| 6 | Bucket Pin Height at Maximum Lift | 2818 mm | 110.9 in |
| 7 | Bucket Pin Height at Carry Position | 215 mm | 8.5 in |
| 8 | Reach at Maximum Lift and Dump | 533 mm | 21.0 in |
| 9 | Clearance at Maximum Lift and Dump | 2077 mm | 81.8 in |
| 10 | Ground Clearance | 175 mm | 6.9 in |
| 11 | Departure Angle | | 27.9° |
| 12 | Bumper Overhang behind Rear Axle | 894 mm | 35.2 in |
| 13 | Maximum Dump Angle | | 46.7° |
| 14 | Vehicle Width over Tires | 1497 mm | 58.9 in |
| 15 | Turning Radius from Center - Machine Rear | 1513 mm | 59.6 in |
| 16 | Turning Radius from Center - Coupler | 1104 mm | 43.5 in |
| 17 | Turning Radius from Center - Bucket | 1977 mm | 77.8 in |
| 18 | Maximum Reach with Arms Parallel to Ground | 1288 mm | 50.7 in |
| 19 | Rack Back Angle at Maximum Height | | 88.9° |

*Operating Weight, Operating Specifications and Dimensions all based on 75 kg (165 lb) operator, all fluids, single speed, 1524 mm (60 in) dirt bucket, **Cat 10 x 16.5 tires**, standard flow hydraulics, CO cab (ROPS, static seat), 880 CCA battery, manual quick coupler, no self level and no optional counterweights (unless otherwise noted).

MANDATORY EQUIPMENT

- Hydraulics, Standard or High Flow
- Quick Coupler, Mechanical or Electric
- Seat Belt, 50 mm (2 in) or 75 mm (3 in)
- EU Preparation Package (Europe only)
- Power Train: One Speed, One Speed with Ride Control, Two Speed or Two Speed with Ride Control
- Tires, 10 × 16.5

PERFORMANCE PACKAGES

- Performance Package H1: *Standard Flow Hydraulics (No Self Level)*
- Performance Package H2: *Standard Flow Hydraulics, Dual Direction Electronic Self Level (Raise and Lower), Electronic Snubbing (Raise and Lower)*
- Performance Package H3: *High Flow Hydraulics, Dual Direction Electronic Self Level (Raise and Lower), Electronic Snubbing (Raise and Lower)*

STANDARD EQUIPMENT

ELECTRICAL

- 12 volt Electrical System
- 80 ampere Alternator
- Ignition Key Start/Stop Switch
- Lights: *Gauge Backlighting, Two Rear Tail Lights, Two Adjustable Front and Rear Halogen Lights, Dome Light*
- Backup Alarm
- Heavy Duty Battery, 880 CCA

OPERATOR ENVIRONMENT

- Gauges: *Fuel Level, Hour Meter*
- Operator Warning System Indicators: *Air Filter Restriction, Alternator Output, Armrest Raised/Operator Out of Seat, Engine Coolant Temperature, Engine Oil Pressure, Glow Plug Activation, Hydraulic Filter Restriction, Hydraulic Oil Temperature, Parking Brake Engaged*
- Adjustable Vinyl Seat
- Fold In Ergonomic Contoured Armrest
- Control Interlock System, when operator leaves seat or armrest raised: *Hydraulic System Disables, Hydrostatic Transmission Disables, Parking Brake Engages*
- ROPS Cab, Open, Tilt Up
- FOPS, Level I
- Top and Rear Windows
- Floor Mat
- Interior Rearview Mirror
- 12 volt Electric Socket
- Horn
- Hand (Dial) Throttle, Electronic
- Adjustable Joystick Controls
- Anti-theft Security System with 6-button Keypad
- Storage Compartment with Netting

OPTIONAL EQUIPMENT

- Hand-Foot Style Controls
- External Counterweights
- Beacon, Rotating
- Engine Block Heater – 120V
- Oil, Hydraulic, Cold Operation
- Paint, Custom
- Product Link™, Cellular

COMFORT PACKAGES

- Open ROPS (C0): *Static Seat (No Foot Throttle, Headliner, Heater or Door)*
- Open ROPS (C1): *Foot Throttle, Headliner, Cup Holder, and choice of Seat (Mechanical Suspension or High Back, Heated, Air Ride Seat) (No Heater or Door)*
- Enclosed ROPS with Heater (C2): *Foot Throttle, Headliner, Heater and Defroster, Side Windows, Cup Holder, Radio Ready, choice of Seat (Mechanical Suspension or High Back, Heated, Air Ride Seat) and Door (Glass or Polycarbonate)*
- Enclosed ROPS with A/C (C3): *C2 + Air Conditioner*

POWER TRAIN

- Cat C2.2, Turbo Diesel Engine, Meeting Tier 4 Final/Stage IIIB Emission Standards
- Air Cleaner, Dual Element, Radial Seal
- S-O-SSM Sampling Valve, Hydraulic Oil
- Filters, Cartridge-type, Hydraulic
- Filters, Cartridge-type, Fuel and Water Separator
- ATAAC/Radiator/Hydraulic Oil Cooler (side-by-side)
- Spring Applied, Hydraulically Released Parking Brakes
- Hydrostatic Transmission
- Four Wheel Chain Drive

OTHER

- Engine Enclosure, Lockable
- Extended Life Antifreeze, –36° C (–33° F)
- Machine Tie Down Points (6)
- Support, Lift Arm
- Hydraulic Oil Level Sight Gauge
- Radiator Coolant Level Sight Gauge
- Radiator, Expansion Bottle
- Cat ToughGuard™ Hose
- Auxiliary, Hydraulics, Continuous Flow
- Heavy Duty, Flat Faced Quick Disconnects with Integrated Pressure Release
- Split D-Ring to Route Work Tool Hoses Along Side of Left Lift Arm
- Electrical Outlet, Beacon
- Belly Pan Cleanout
- Variable Speed Demand Fan

- Advanced Display: Full Color, 5 in LCD screen, Advanced Multi-operator Security System, On-screen Adjustments for Implement Response, Hystat Response, and Creep Control; Rearview Camera Ready
- Advanced Display: Rearview Camera Included (standard equipment in Europe only)
- Work Tool Return to Dig and Work Tool Positioner
- Bluetooth Radio with Microphone (AM/FM/Weather Band Receiver with USB and Auxiliary Input Jack)

226D Skid Steer Loader

For more complete information on Cat products, dealer services, and industry solutions, visit us on the web at www.cat.com

© 2016 Caterpillar
All rights reserved

Materials and specifications are subject to change without notice. Featured machines in photos may include additional equipment. See your Cat dealer for available options.

CAT, CATERPILLAR, SAFETY.CAT.COM, their respective logos, "Caterpillar Yellow" and the "Power Edge" trade dress, as well as corporate and product identity used herein, are trademarks of Caterpillar and may not be used without permission.

AEHQ7483-01 (04-2016)
Replaces AEHQ7483
(NACD, EU)

