


# HERE FOR THE TOUGHEST JOBS.

CAT® CT680 VOCATIONAL TRUCK







CT680L

# THE RIGHT CHOICE FOR YOUR WORK.

**WHEN YOU HAVE HEAVY LOADS TO HAUL**, hard jobs to perform or harsh environments to endure, the Cat® CT680 Vocational Truck is your solution. It's a seriously powerful truck built for seriously productive work—with a bold design that will set you apart from the crowd.

A Class 8, set-forward-axle model available in truck or tractor day-cab configurations, the CT680 features a spacious cab for shift-long comfort, rugged automotive styling, vocational-specific engine and transmission, and bumper-to-bumper support. Two exterior trim levels—L and LG—let you choose the features that best fit your budget, style and serviceability needs

Like the other models in our vocational truck family, the CT680 was built with your input. Our design decisions were inspired by the hundreds of hours we spent on the road asking drivers to describe the ideal truck. The result? The CT680 is the truck you built—and it's here to work in today's most demanding jobs.



# CT680LG



## EXTERIOR TRIM LEVELS

### CAT CT680L

- Three-piece Metton hood
- Three-piece chrome bumper
- Three-piece chrome stainless steel grille surround
- Composite halogen headlights
- Incandescent park/turn lights

### CAT CT680LG

- One-piece fiberglass hood
- Three-piece black bumper
- Integrated fiberglass grille surround
- Sealed-beam halogen headlights
- LED park/turn lights





# ULTIMATE COMFORT AND PRODUCTIVITY.

**WITH ITS SET-FORWARD AXLE**, parabolic taper leaf suspension, tuned cab air suspension system, and premium sound insulation and trim, the CT680 sets new industry standards for ride quality. The wide, spacious work environment—filled with thoughtful ergonomic details—reduces driver fatigue and delivers all-day comfort, productivity and safety.



- » **MAXIMIZE SAFETY AND MINIMIZE FATIGUE** with our ergonomically designed dashboard and center stack.
- » **ENJOY A SMOOTH, QUIET RIDE** with our tuned cab air suspension system, premium grade sound insulation kit, and durable routing and clipping wire system.
- » **WORK IN COMFORT ALL SHIFT LONG** with our wide array of driver seat options, including the Cat Comfort Seat.
- » **FIND THE MOST COMFORTABLE DRIVING POSITION** with our tilting, telescoping steering column with leather-wrapped steering wheel.

- » **ENHANCE YOUR VISIBILITY** with standard and convex cab mirrors combined in a single package.
- » **QUICKLY ACCESS PAPERWORK** log books and other important items with our easy-to-reach side compartments, back-panel storage and oversized side pockets.
- » **SAFELY ILLUMINATE** your exit, entry and work areas with overhead, under-dash and adjustable map lights that shine right where you need them.
- » **FIND JUST THE RIGHT TEMPERATURE** with easy-access HVAC controls and vents positioned for optimum air flow.





# READY TO WORK HARD.

**YOU WANT A TRUCK YOU CAN WORK HARD**—one that stands up to heavy loads and damaging applications. The CT680 delivers. Its rugged exterior is built to handle your toughest jobs and do it in style, with an attractive automotive appearance and industry-leading materials, fit and finish.

- » **MAXIMIZE YOUR PAYLOADS** with our aluminum alloy cab construction that reduces overall weight and extends cab life.
- » **GET AN UNCOMPROMISED VIEW** of the road with our curved, sloped, wraparound windshield in a one- or two-piece design.
- » **BOOST SAFETY** with our large, heated, cowl-mounted power mirrors featuring integrated turn signals.
- » **SIMPLIFY SERVICE** with modular components (grille, grille surround, bumper and fender extensions) that can be replaced individually and go back together looking brand new.
- » **ACHIEVE EFFICIENT AIR MANAGEMENT** (and a stylish appearance) even in dirty, dusty applications with our dual external air cleaner option.
- » **ENTER AND EXIT SAFELY** and easily with our generous door opening, three-point grab irons and skid-resistant steps.
- » **GET EASY ACCESS** to key service points like coolant, washer reservoirs and air filters—and quickly replace headlight bulbs and windshield wiper blades without any tools.



## CHASSIS

- Set-forward axle, 124-inch bumper to back of cab (BBC)
- 12.25-inch rail size: 120,000 psi yield strength
- Mega bracket design

## AXLES

- Meritor & Dana
- 6x4 & 8x6 configurations
- Tandems: Dana Spicer & Meritor 40,000-70,000 lbs. standard track
- Front axle: Meritor 12,000-20,000 lbs.

## SUSPENSION

### FRONT

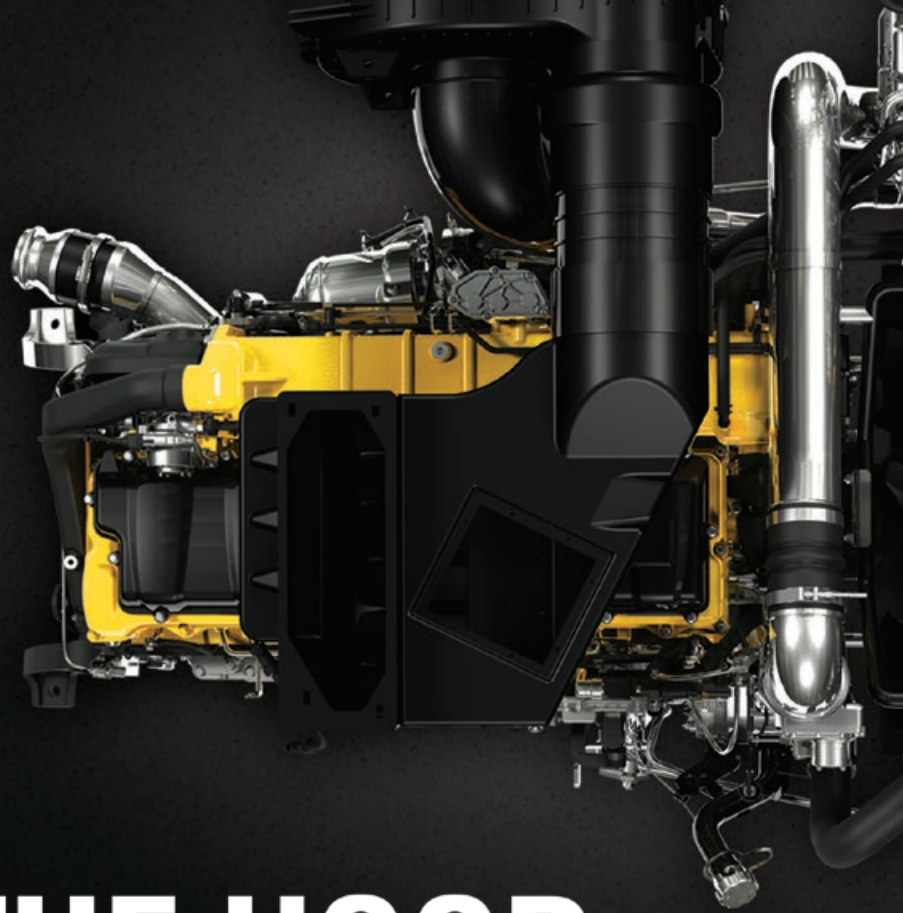
- Parabolic taper leaf with shock absorbers for a smoother ride
- Optional two-stage multi-leaf shackle-type with shocks

### REAR

- Hendrickson offerings: HMX, HAS, RT, RS, R, PAX
- Chalmers: standard and high articulation
- Capacities from 40,000-85,000 lbs.

## FUEL TANKS

- 80-, 100- & 120-gallon capacities
- 9.5-gallon diesel exhaust fluid tank
- Single left, dual under cab or back of cab options
- Aluminum alloy construction
- 24- or 26-inch options



# HARD AT WORK UNDER THE HOOD.

**YOUR CT680 IS POWERED** by a Cat CT Series Vocational Truck Engine with ratings from 410–475 bhp and 1,450–1,700 lb-ft of peak torque. Designed specifically for vocational applications, it features an ideal match of power and performance to tackle the toughest jobs.

- » **DRIVE ENGINE POWER** to your attachments with our rear power take-off (PTO).
- » **REDUCE GEAR SHIFTING** with our advanced air management system, which allows for fewer downshifts up steep grades.
- » **ACHIEVE PRECISE INJECTION TIMING** and optimal combustion with our high-pressure, common-rail fuel system that features ideal injection pressures.
- » **GET BROAD PEAK TORQUE** characteristics with our dual sequential turbochargers and high-pressure injection system.
- » **REDUCE DIAGNOSTIC AND MAINTENANCE TIME** with our single Electronic Control Module (ECM) and fewer electrical connections.
- » **MEET EMISSIONS STANDARDS** with our highly efficient Selective Catalytic Reduction (SCR) solution, featuring upgraded in-cylinder technology and proven aftertreatment system.
- » **EASILY ACCESS KEY SYSTEMS** and components from valve cover to oil filter to fuel filter.
- » **SAVE WEIGHT** (up to 200 pounds compared to standard iron) with our compacted graphite iron block.
- » **INCREASE RELIABILITY** with our fluid-free head gasket that eliminates the risk of coolant leaking into engine oil or exhaust gases entering the cooling system.



## CAT CT13 ENGINE SPECIFICATIONS

<b>ENGINE TYPE</b>	<ul style="list-style-type: none"><li>Diesel, 4-cycle</li></ul>
<b>CONFIGURATION</b>	<ul style="list-style-type: none"><li>Inline 6-cylinder</li></ul>
<b>DISPLACEMENT</b>	<ul style="list-style-type: none"><li>758 cubic inches (12.4 L)</li></ul>
<b>BORE AND STROKE</b>	<ul style="list-style-type: none"><li>4.96 inches &amp; 6.54 inches (12.6 cm &amp; 16.6 cm)</li></ul>
<b>COMPRESSION RATIO</b>	<ul style="list-style-type: none"><li>17:1</li></ul>
<b>ASPIRATION</b>	<ul style="list-style-type: none"><li>Dual series turbochargers, intercooler &amp; aftercooler</li></ul>
<b>COMBUSTION SYSTEM</b>	<ul style="list-style-type: none"><li>Direct injection</li></ul>
<b>LUBRICATION SYSTEM CAPACITY</b>	<ul style="list-style-type: none"><li>42 quarts (40 L)</li></ul>
<b>COOLANT DRAIN INTERVAL</b>	<ul style="list-style-type: none"><li>600,000 miles (965,606 km)</li></ul>
<b>TOTAL ENGINE WEIGHT (DRY)</b>	<ul style="list-style-type: none"><li>2400 lbs. (1089 kg)</li></ul>
<b>DIMENSIONS</b>	<ul style="list-style-type: none"><li>L 59 inches x W 37 inches x H 49 inches (L 150 cm x W 94 cm x H 125 cm)</li></ul>
<b>VALVES</b>	<ul style="list-style-type: none"><li>4 valves per cylinder, overhead cam actuated</li></ul>
<b>HORSEPOWER</b>	<ul style="list-style-type: none"><li>410-475 hp (302-349 kW) @ 1700 rpm</li></ul>
<b>PEAK TORQUE</b>	<ul style="list-style-type: none"><li>1450-1700 lb-ft (1966-2305 N-m) @ 1000 rpm</li></ul>

## CAT CT13 ENGINE PERFORMANCE DATA

<b>HORSEPOWER (BHP @ 1700 RPM)</b>	<b>TORQUE PEAK (LB-FT @ 1000 RPM)</b>	<b>GOV. SPEED (RPM)</b>	<b>FULLY DEVELOPED TORQUE (LB-FT @ 800 RPM)</b>
410	1450	2100	828
430	1550	2100	868
475	1700	2100	959





# SHIFT INTO BETTER PERFORMANCE.

**WHEN YOU WANT TO MAXIMIZE** your CT680's uptime, fuel economy and productivity, choose the Cat CX31 Automatic Transmission. It's been used for years in vocational applications around the world—and it's performance-matched with your engine to deliver rugged durability, smooth shifting and optimum power. (Other options include a variety of manual transmissions and the Ultrashift® Plus Vocational Transmission built by Eaton.)

- » **BOOST YOUR PRODUCTIVITY** with the industry's highest power-to-weight ratio, full power shifting and quick acceleration. Specify the Cat CX31 HT (High Torque) for applications with up to 1,850 lb-ft engine ratings.
- » **IMPROVE YOUR FUEL ECONOMY** with ideal speed and torque combinations.
- » **FIND, TRAIN AND RETAIN** productive drivers with easy-to-learn and simple-to-operate automatic shifting.
- » **ENHANCE JOBSITE SAFETY** as drivers no longer need to operate the clutch or remove their hands from the wheel.
- » **IMPROVE PERFORMANCE AND SERVICEABILITY** with two side power take-off (PTO) locations and a Caterpillar exclusive rear PTO.
- » **REST EASY** with warranty and extended service coverage matched to your engine. Cat dealers know the CX31 inside and out because they've been supporting it in various on-highway applications since 2006.



## CAT CX31 AUTOMATIC TRANSMISSION SPECIFICATIONS

<b>SPEEDS</b>	<ul style="list-style-type: none"><li>• 6 forward/1 reverse</li></ul>
<b>ENGINE</b>	<ul style="list-style-type: none"><li>• Cat CT13</li></ul>
<b>TORQUE CONVERTER</b>	<ul style="list-style-type: none"><li>• Cast aluminum design with lock-up clutch</li></ul>
<b>CLUTCHES</b>	<ul style="list-style-type: none"><li>• Electro-hydraulic fully modulated, oil-cooled, multidisc</li></ul>
<b>MAXIMUM GROSS INPUT POWER</b>	<ul style="list-style-type: none"><li>• 550 hp (410 kW)</li></ul>
<b>MAXIMUM GROSS INPUT TORQUE</b>	<ul style="list-style-type: none"><li>• 1700 lb-ft (2400 N·m)</li></ul>
<b>MAXIMUM INPUT SPEED</b>	<ul style="list-style-type: none"><li>• 2500 rpm</li></ul>
<b>LENGTH</b>	<ul style="list-style-type: none"><li>• 35.3 inches (896 mm)</li></ul>
<b>ELECTRONIC INTERLOCK</b>	<ul style="list-style-type: none"><li>• Multiple capabilities to control power, speed, gear selection, direction &amp; PTO operations</li></ul>
<b>POWER TAKE-OFF (PTO)</b>	<ul style="list-style-type: none"><li>• Two side locations &amp; Cat exclusive high output rear PTO</li></ul>
<b>SIDE PTO CAPACITY</b>	<ul style="list-style-type: none"><li>• 700 lb-ft (950 N·m), rotation same as engine, ratio determined by PTO adaptor</li></ul>
<b>REAR PTO CAPACITY</b>	<ul style="list-style-type: none"><li>• 1000 lb-ft (1356 N·m), rotation opposite of engine, at 1.25 engine speed</li></ul>
<b>INPUT SHAFT HYDRAULIC RETARDER</b>	<ul style="list-style-type: none"><li>• Optional</li></ul>
<b>OVERALL WEIGHT (APPROX.)</b>	<ul style="list-style-type: none"><li>• 906 lbs. (411 kg)</li></ul>
<b>OVERALL WEIGHT WITH RETARDER OPTION</b>	<ul style="list-style-type: none"><li>• 1088 lbs. (494 kg)</li></ul>
<b>OVERALL LENGTH WITH RETARDER OPTION</b>	<ul style="list-style-type: none"><li>• 39.4 inches (1000 mm)</li></ul>





# WORK HARDER — AND SMARTER.

**GETTING ACCURATE.** timely information about how, when and where your truck is being used can help you reduce costs, enhance performance and improve security. That's why the CT680 comes standard with Product Link™, our comprehensive asset and fleet management tool— and with our optional Vehicle Infotainment System and tire pressure monitoring system.





#### PRODUCT LINK

- » Track fuel use and costs, location history, working versus idle time, preventive maintenance schedules, fluid analysis results and more.
- » Get odometer, engine hour and transmission PTO hour updates.
- » Set up site boundaries to detect movement outside an authorized area.
- » Receive fault code or suspicious movement alerts via email or text message.
- » Identify opportunities for driver training.
- » Use your smartphone to check status when you're on the go.

#### VEHICLE INFOTAINMENT SYSTEM (VIS)

- » Use the navigation software to set truck-specific routing and account for bridge heights, size limits and more.
- » Log miles during a trip or leg of a trip—including distance, time and miles per gallon—and keep accurate records for billing and tax purposes.
- » Access Department of Transportation and recommended safety and vehicle inspection checklists or customize your own.
- » View vehicle parameters that need to be checked after specific mileage intervals.
- » Combine with the **Bendix Tire Pressure Monitoring System** to get fully customizable tire pressure status information (dealer install).





# BACKED BY THE BEST IN THE BUSINESS.

**A RUGGED, DEPENDABLE TRUCK** like the CT680 deserves service and support that's just as long-lasting. That's what you get with the Cat dealer network—the backing of the best on-the-ground support team in the business. Cat dealers have set the standard in the on-highway and heavy construction industries for generations, and vocational trucks are no exception.

- » **ORDER THE EXACT CT680** you need with your dealer's expertise on work applications and customized options ranging from transmissions to suspensions and axles.
- » **GET UP AND RUNNING FAST** with bumper-to-bumper service, 24/7 parts ordering, unmatched parts availability and timely delivery from your local dealer.
- » **EASILY LOCATE SERVICE AND PARTS** no matter where your work takes you with more than 400 Cat dealer service locations and 2,300 service bays in North America.
- » **SELECT THE RIGHT LEVEL OF PROTECTION** for your operation with unmatched warranty coverage, extended warranties and a variety of scheduled maintenance programs.
- » **CHOOSE FROM SIMPLE, AFFORDABLE FINANCING** leasing and insurance solutions available through Cat Financial.







# CAT

**YOU DESERVE A VOCATIONAL TRUCK AS HEAVY-DUTY AS  
YOUR APPLICATION. WE'RE BUILT TO MEET THAT CHALLENGE.**

**VISIT [DRIVECAT.COM](http://DRIVECAT.COM) OR TALK TO YOUR CAT DEALER TODAY TO LEARN MORE  
ABOUT THE CT680 AND THE FULL LINE OF CAT VOCATIONAL TRUCKS. JOIN US ONLINE  
TO STAY UP-TO-DATE ON THE LATEST CAT TRUCK AND INDUSTRY NEWS.**

**BUILT FOR IT.™**



CAT VOCATIONAL TRUCKS



@CAT\_TRUCK

