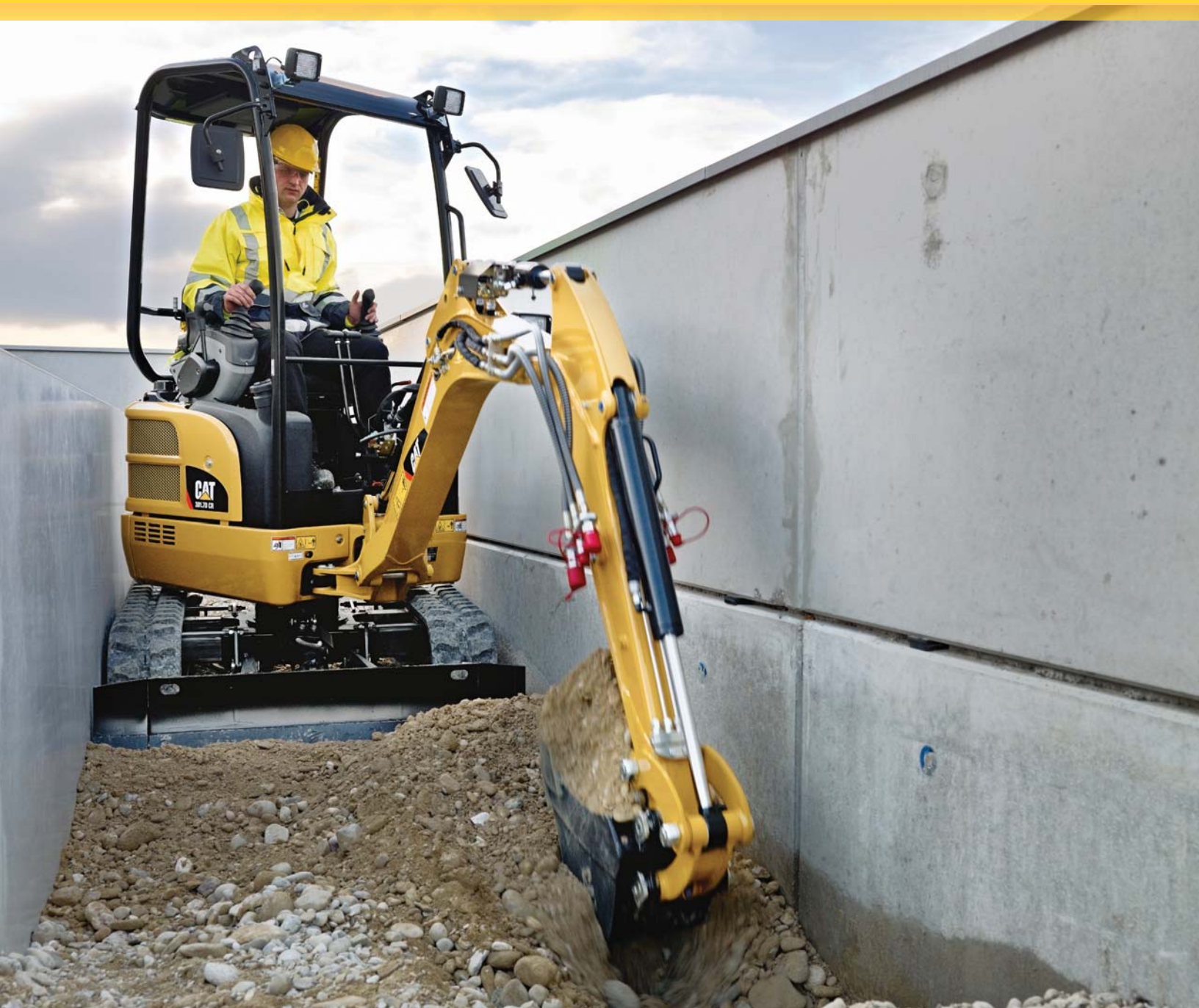


301.7D CR

Mini Hydraulic Excavator



Engine

Gross Power (ISO 14396)	17.9 kW	24.3 hp
Rated Net Power @ 2,200 rpm (ISO 9249)	13.2 kW	17.7 hp

Weights

Transport Weight with Canopy	1610 kg
Operating Weight with Canopy	1690 kg

Buckets

Bucket Size	0.02 m ³ or 0.04 m ³
-------------	--

**High
performance
in a compact
radius design
for greater
versatility and
controllability.**



Contents

Compact Radius	4
Versatility.....	6
Operator Station.....	8
Engine and Service Access	10
Specifications.....	12
Standard Equipment.....	14



The new Cat® 301.7D CR gives you a blend of power, control and stability to make your working day easier and more productive.

Compact Radius

Productivity in confined areas with zero tail swing



The zero tail swing Cat 301.7D CR can work comfortably in confined work areas with the machine upper frame able to slew within its track width. This compact radius design also allows you to concentrate on the work being performed without having to worry about damage to the back of the machine or site.

Extending Undercarriage

Fitted with an extending undercarriage and fold out dozer blade as standard, the machine can gain access into most areas when fully retracted to 990 mm, and once extended to its full 1300 mm working width the undercarriage affords excellent stability for even greater digging and loading performance.



Versatility

Flexibility built in for a variety of jobs



Hammer Lines as Standard

Hammer and two-way auxiliary hydraulic lines with quick disconnects allow the operation of a hydraulic hammer and of a bi-directional tool such as an auger.

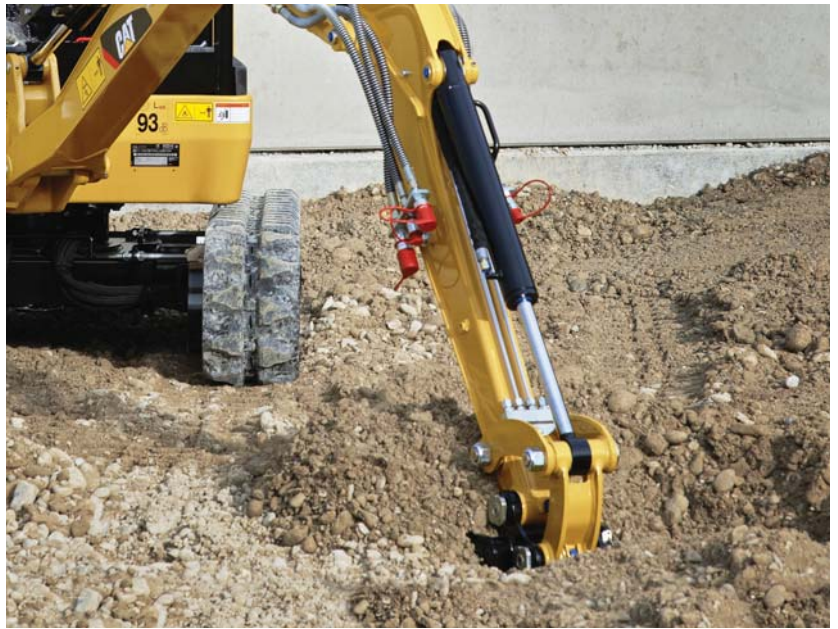


The 'ready to work' quick disconnect connections are equipped with an accumulator as standard to help make releasing and changing of tools a quick and easy task. Located close to the work tool, they reduce hose lengths and minimize potential damage.

1) Auxiliary flow adjust 2) Front linkage

Dig Depth/Reach

The durable stick offers the depth and reach to meet many application requirements. The high stick force also allows for superior penetration when working in rocky terrain.



Sturdy hoisting points on the canopy roof enable the easy, safe and rapid relocation of the machine between sites or for loading of the machine onto a trailer.



Operator Station

Simple, easy operation allows the operator to focus on production



Controls

- Ergonomically laid out operator station with pilot operated joystick and foot pedal. All functions are pilot controlled to deliver excellent control and eliminate the need for maintenance of cables and linkages.
- The adjustable suspension seat provides a comfortable operating position and lifts to provide additional engine access.
- Retractable seat belts ensure that they are kept in good condition and ready to wear for your safety and comfort.
- Safety Lock Out – All machine controls are disabled by raising the control pod for safe and controlled machine starting.

A roof panel allows the operator to see the bucket at height giving better and safer loading operations with less operator effort.



Adjustable wrist rests reduce fatigue by positioning to best suit your preferred operating position.



Travel foot bars are provided as standard to make moving around site easy and effortless. Ideal for traveling over longer distances or when you wish to operate the front linkage at the same time.



1) Roof guard and lights 2) Instrumentation
3) Travel pedals

Engine and Service Access

Powerful engine with load sensing hydraulics and minimal maintenance



Customer Support – Unmatched Support Makes the Difference

Your Cat dealer is ready to assist you with your purchase decision and everything after.

- Financing packages are flexible to meet your needs.
- Unmatched parts availability keeps you working.
- Make comparisons of machines, with estimates of component life, preventative maintenance and cost of production.
- For more information on Cat products, dealers services and industry solutions, visit www.cat.com.



Powerful Engine and Load Sensing Hydraulics

The 17.9 kW (24.3 hp) engine is matched with a load sensing hydraulic system and variable displacement pump to provide excellent digging performance and smooth control. No stall under load and power when needed make the 301.7D CR very productive for such a compact package.

Excellent Service Access

Daily checks and regular service points including fuel and hydraulic oil fill are easily reached via the large steel rear door and removable side panels. The main hydraulic valve and lines are also easily reached through a removable floor plate and side panels.

The machine has durable steel body panels all around, offering good resistance to impact damage and helping to maintain the machine's appearance and value.



301.7D CR Mini Hydraulic Excavator Specifications

Engine

Engine Model	Yanmar 3TNV76	
Rated Net Power @ 2,200 rpm (ISO 9249)	13.2 kW	17.7 hp
Gross Power (ISO 14396)	17.9 kW	24.3 hp
Displacement	1116 cm ³	

Weights

Transport Weight with Canopy	1610 kg
Operating Weight with Canopy	1690 kg

- Weight includes standard stick, rubber tracks, bucket, operator and full fuel.

Travel System

Travel Speed	2.8 km/h-5.6 km/h
Gradeability	30°/58%

Service Refill Capacities

Fuel Tank Capacity	19 L
Hydraulic Tank Capacity	20 L

Operating Specifications

Stick Length – Standard	940 mm
Counterweight	50 kg

Blade

Width	990 mm/1300 mm
Height	230 mm
Dig Depth	390 mm
Lift Height	271 mm

Hydraulic System

Pump Flow @ 2,200 rpm	39.6 L/min
Operating Pressure – Equipment	240 bar
Operating Pressure – Travel	240 bar
Operating Pressure – Swing	180 bar
Auxiliary Circuits	
Primary and Secondary Auxiliary Circuits	
Maximum Flow	35 L/min
Maximum Pressure	230 bar
Maximum Bucket Force	14.2 kN
Maximum Stick Force – Standard Stick	8.4 kN

Lift Capacity at Ground Level – Undercarriage Extended

Lift Point Radius	2 m		2.5 m		3 m		Maximum	
	Front	Side	Front	Side	Front	Side	Front	Side
	kg	kg	kg	kg	kg	kg	kg	kg
Standard Stick/Extended Undercarriage/Blade Down	*916	376	*653	271	*493	208	*404	179

Machine fitted with standard dozer blade and standard counterweight.

The above loads are in compliance with hydraulic excavator lift capacity rating standard ISO 10567:2007 and they do not exceed 87% of hydraulic lift capacity or 75% of tipping capacity.

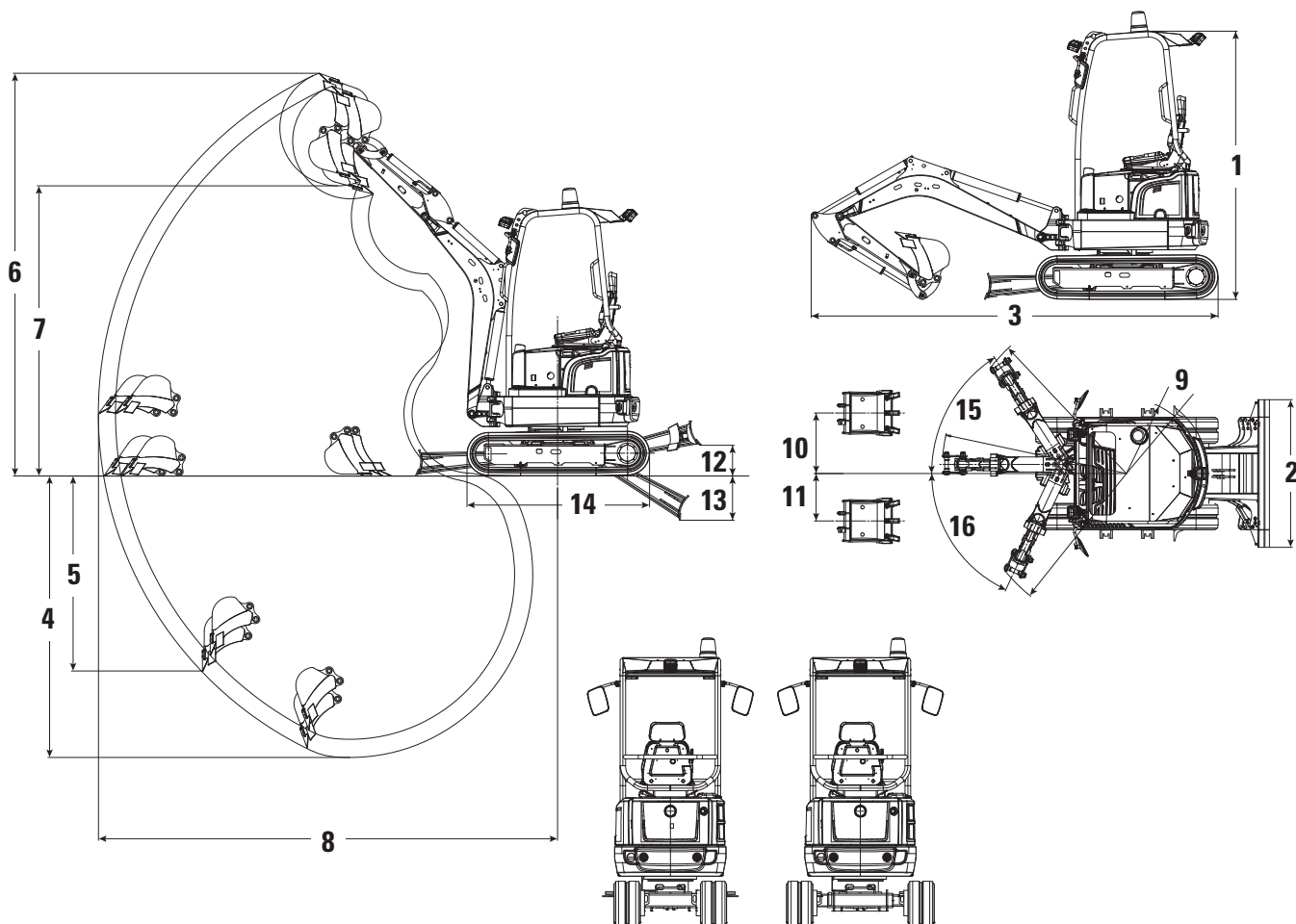
The excavator bucket weight is not included on this chart.

*Loads are hydraulic limited.

301.7D CR Mini Hydraulic Excavator Specifications

Dimensions

All dimensions are approximate.



		Standard Stick
1	Height	2362 mm
2	Width	730 mm
	Undercarriage Width – Retracted	990 mm
	Undercarriage Width – Extended	1300 mm
3	Transport length (Arm lowered)	3584 mm
4	Maximum digging depth	2321 mm
5	Maximum vertical dig depth	1578 mm
6	Maximum dig height	3434 mm
7	Maximum dump height	2441 mm
8	Maximum reach at ground level	3842 mm
9	Tail swing radius	660 mm/722 mm
10	Maximum boom offset (RH)	533 mm
11	Maximum boom offset (LH)	418 mm
12	Maximum dozer lift height	271 mm
13	Maximum dozer dig depth	390 mm
14	Length of undercarriage (Extending)	1607 mm
15	Boom swing angle (RH)	57°
16	Boom swing angle (LH)	65°

301.7D CR Standard Equipment

Standard Equipment

Standard equipment may vary. Consult your Cat dealer for details.

- 230 mm rubber track
- Bucket, 0.02 m³ or 0.04 m³
- Canopy – ROPS and TOPS protection
- Dozer blade
- Extending undercarriage
- Hammer/2 way lines
- Hydraulic oil cooler
- Maintenance free battery
- Retractable seat belt
- Standard stick
- Suspension seat, vinyl covered
- Travel steering bars
- Working light mounted to boom

For more complete information on Cat products, dealer services, and industry solutions, visit us on the web at www.cat.com

© 2016 Caterpillar
All rights reserved

Materials and specifications are subject to change without notice. Featured machines in photos may include additional equipment. See your Cat dealer for available options.

CAT, CATERPILLAR, SAFETY.CAT.COM, their respective logos, "Caterpillar Yellow" and the "Power Edge" trade dress, as well as corporate and product identity used herein, are trademarks of Caterpillar and may not be used without permission.

AEHQ7450-02 (04-2016)
Replaces AEHQ7450-01

