



# Cat<sup>®</sup> TL1255D

## TELEHANDLER

### Specifications

#### Engine

|                     |                              |          |
|---------------------|------------------------------|----------|
| Model*              | Cat <sup>®</sup> C4.4 ACERT™ |          |
| Gross Power (Basic) | 106 kW                       | 142.1 hp |

\*Meets U.S. EPA Tier 4 Final emission standards.

#### Weights

|                  |           |           |
|------------------|-----------|-----------|
| Operating Weight | 15 586 kg | 34,361 lb |
|------------------|-----------|-----------|

#### Operating Specifications

|                                       |          |           |
|---------------------------------------|----------|-----------|
| Rated Load Capacity                   | 5443 kg  | 12,000 lb |
| Maximum Lift Height (o/r Down)        | 16.6 m   | 54.6 ft   |
| Maximum Forward Reach                 | 12.8 m   | 42 ft     |
| Frame Leveling                        | 10°      |           |
| Top Travel Speed                      | 33 km/h  | 20.5 mph  |
| Capacity at Maximum Height (o/r Down) | 2268 kg  | 5,000 lb  |
| Capacity at Maximum Reach (o/r Down)  | 1587 kg  | 3,500 lb  |
| Turning Radius over Tires             | 4.3 m    | 14 ft     |
| Drawbar Pull (Loaded)                 | 113.9 kN | 25,605 lb |

#### Hydraulic System

|  |          |            |
|--|----------|------------|
| Variable displacement load sensing axial piston pump |          |            |
| System Operating Pressure                            | 260 bar  | 3,771 psi  |
| Auxiliary Hydraulic Pressure                         | 228 bar  | 3,307 psi  |
| Auxiliary Hydraulic Flow                             | 95 L/min | 25 gal/min |

- Auxiliary Hydraulic Circuit used for all attachments equipped with cylinders or other hydraulic components.

#### Service Refill Capacities

|                                 |        |         |
|---------------------------------|--------|---------|
| Fuel Tank                       | 145 L  | 38 gal  |
| Diesel Exhaust Fluid (DEF) Tank | 21.5 L | 5.7 gal |
| Hydraulic System                | 189 L  | 50 gal  |

#### Tires

|          |                            |  |
|----------|----------------------------|--|
| Standard | 400/75-28 Duraforce        |  |
| Optional | 400/75-28 Foam Filled      |  |
|          | 14.00-24 Solid             |  |
|          | 17.5 × 25 16PR Air         |  |
|          | 17.5 × 25 12PR Foam Filled |  |

#### Transmission Speeds

|         |         |
|---------|---------|
| Forward | 4 speed |
| Reverse | 3 speed |

#### Boom Performance

|           |              |
|-----------|--------------|
| Boom Up   | 16.7 Seconds |
| Boom Down | 14.4 Seconds |
| Tele In   | 16.3 Seconds |
| Tele Out  | 18.5 Seconds |

#### Axles

- Trunnion mounted planetary 55 degree steer axles.
- High bias limited slip differential on front axle.

#### Brakes

- Service Brakes are inboard wet disc brakes on front and rear axles.
- Parking Brakes are wet disc, spring applied hydraulic release on front axle.

#### Work Tools

|                      | Includes                    | Includes                  |
|----------------------|-----------------------------|---------------------------|
| Hydraulic IT Coupler | Auxiliary Electrics         | Auxiliary Electrics       |
| Pallet Forks         | (2) 1525 mm, 60 mm × 150 mm | (2) 60 in, 2.36 in × 6 in |
|                      | (2) 1220 mm, 60 mm × 125 mm | (2) 48 in, 2.36 in × 5 in |
| Lumber Forks         | (2) 1829 mm, 50 mm × 150 mm | (2) 72 in, 2 in × 6 in    |
| Fork Extensions*     | 2300 mm                     | 90 in                     |
| Cubing Forks         | (2) 1220 mm, 50 mm × 50 mm  | (2) 48 in, 2 in × 2 in    |

#### Carriages:

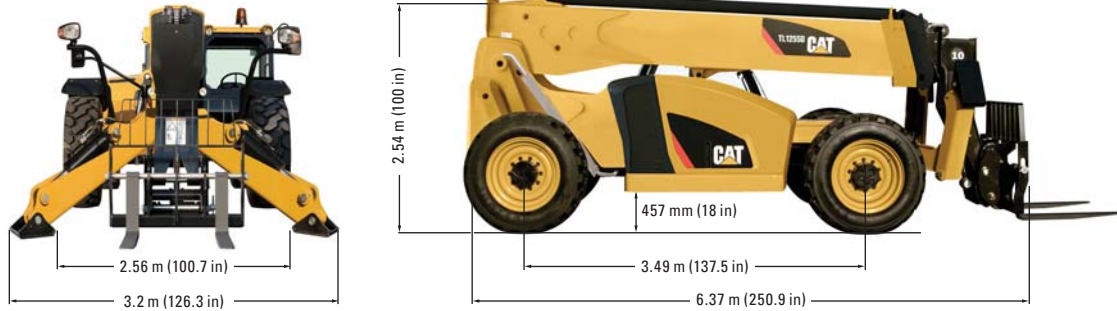
|                  |  |   |
|------------------|--|---|
| Standard Tilt    | 1270 mm  | 50 in   |
| Wide Tilt        | 1829 mm  | 72 in   |
| Side Shift       | 1220 mm  | 48 in   |
| Standard Rotate  | 1270 mm  | 50 in   |
| Wide Rotate      | 1829 mm  | 72 in   |
| Swing            | 100°, 1829 mm, 4536 kg Capacity, 2268 kg Swung | 100°, 72 in, 10,000 lb Capacity, 5,000 lb Swung |
| Swing            | 180°, 1824 mm, 5443 kg                         | 180°, 72 in, 12,000 lb                          |
| Dual Positioning | 1270 mm  | 50 in   |

\*For use with 1829 mm (72 in) Lumber Forks.

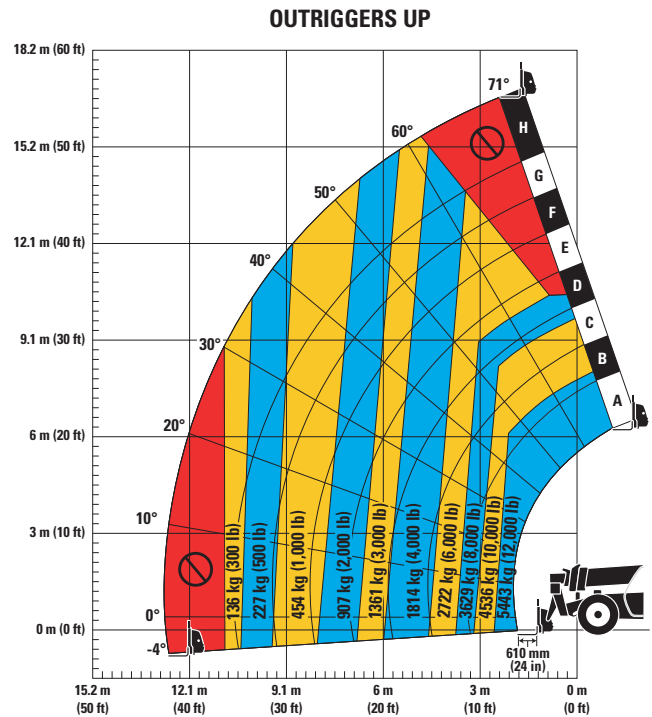
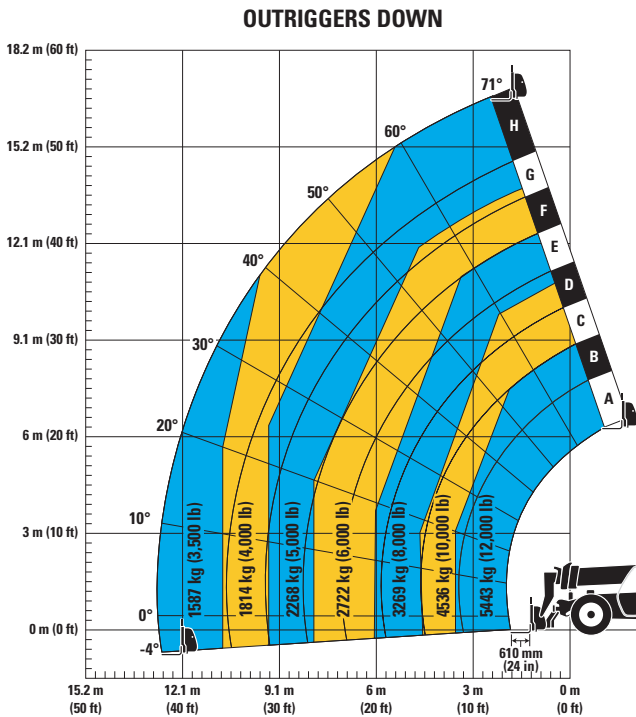


# TL1255D Telehandler

## Dimensions (All dimensions are approximate.)



## Load Chart and Dimensions



### IMPORTANT

Rated lift capacities shown are with machine equipped with carriage and pallet forks. The machine must be level on a firm surface with undamaged, properly inflated tires. Machine specifications and stability are based on rated lift capacities at specific boom angles and boom lengths. (If specifications are critical, the proposed application should be discussed with your dealer.)

DO NOT exceed rated lift capacity loads, as unstable and dangerous machine conditions will result.

DO NOT tip the machine forward to determine the allowable load.

Use only approved attachments with proper material handler model/attachment load capacity charts displayed in the operator's cab.

U.S. OSHA requires all rough terrain forklift operators be trained according to U.S. OSHA 29 CFR 1910.178 (1).

*Due to continuous product improvements, machine specifications and/or equipment changes may be made without prior notification. This machine meets or exceeds ANSI/ITSDF B56.6-2011 as originally manufactured for intended applications.*

For more complete information on Cat products, dealer services, and industry solutions, visit us on the web at [www.cat.com](http://www.cat.com)

© 2015 Caterpillar  
All rights reserved

Materials and specifications are subject to change without notice. Featured machines in photos may include additional equipment. See your Cat dealer for available options.

CAT, CATERPILLAR, SAFETY.CAT.COM, their respective logos, "Caterpillar Yellow" and the "Power Edge" trade dress, as well as corporate and product identity used herein, are trademarks of Caterpillar and may not be used without permission.

AEHQ7473-01 (10-2015)  
Replaces AEHQ7473

