

Hammer / Machine Compatibility

Small and Medium Hydraulic Excavators. Contact your Cat dealer for specific machine configurations.

Model	Machines
H35E/Es	301.4, 301.7, 301.8, 302.2, 302.4
H45E/Es	301.7, 301.8, 302.2, 302.4, 302.5, 302.7
H55E/Es	216, 226, 236, 242, 246, 247, 252, 257, 259, 262, 272, 277, 279, 287, 289, 297, 299, 302.5, 302.7, 303.5, 304, 305, 305.5
H65E/Es	216, 226, 236, 242, 246, 247, 252, 257, 259, 262, 272, 277, 279, 287, 289, 297, 299, 303.5, 304, 305, 305.5, 307, 308, 416, 420, 430
H75Es	416, 420, 422, 424, 428, 430, 432, 434, 442, 444, 446, 307, 308
H95Es	307, 308, 311, 312
H110Es	311, 312, M313, 314, 315, M315, M316, M318
H115Es	311, 312, M313, 314, 315, M315, M316, 318, M318, 319, 320, M320, M322
H120Es	315, M315, M316, 318, M318, 319, 320, M320, 321, 322, M322, 324, 325, 329
H130Es	318, M318, 319, 320, M320, 321, 322, M322, 324, 325, 328, 329, 330, 336
H140Es	324, 328, 329, 336
H160Es	336, 345, 349
H180Es	345, 349, 374

Scan QR code to see Cat Hammers in action!



[WWW.CAT.COM](http://www.cat.com)

©2015 Caterpillar Inc. All rights reserved. CAT, CATERPILLAR, their respective logos, "Caterpillar Yellow" and the POWER EDGE trade dress, as well as corporate and product identity used herein, are trademarks of Caterpillar and may not be used without permission.

AEX00662-03 (01/2015) hr

COMPLETELY CAT

The new E-Series Hammers



COMMITMENT to bring you the best

The best equipment. The best solutions. The best support. You may already have personal experience of the Cat commitment to performance, quality and service. Now we have extended that commitment to the Cat range of hammers, by completely designing, engineering and manufacturing our own line from the ground up. That's right, 100% Cat. And we've even built a dedicated plant to produce them, making Cat the only global manufacturer of both hammers and carriers!

Introducing... the Cat® E-Series Hammers: a line that will help you work more efficiently and productively.

Because they are built for it.

NEW MODELS have been developed: nine for heavy-duty applications like secondary quarrying, trenching/primary excavation, demolition and road construction; and eight for use with mini excavators, skid-steer loaders and backhoe loaders.

100% CAT

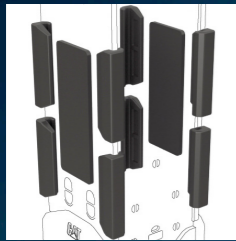
HAMMERS COMPLETELY
**DESIGNED, ENGINEERED
AND MANUFACTURED
BY CAT**

BUILT FOR IT.™

The latest Cat E-Series hammers combine design simplicity with advanced features to enhance performance, durability, ease of use and serviceability. Cat has been making sustainable progress in the machine business for 85 years, and has been co-developing and selling approved hammers for 20 of those. And when it comes to hammers, we've heard your call for rugged, durable designs that are both operator-friendly and offer peak performance.

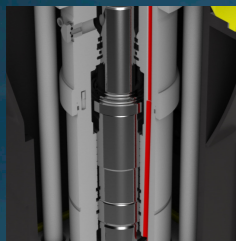


PERFORMANCE through and through



Rugged design

With its symmetrical and fully-enclosed housing, one-piece side plates, easily-replaced rock edges and optional wear package (on some models), the innovative new E-Series hammer has sleek looks as well as rugged design.



Operator-friendly

Auto shut off (eliminates blank firing) plus a unique Suspension System protect the carrier, increasing hammer durability. Integral silencing makes it more comfortable for operators, and more acceptable in urban environments.



Peak performance

Easily removable covers for daily maintenance. Field-replaceable lower tool bushing (simply rotate 90° to double its duty cycle). Simpler tool retaining pin system means it is quickly removed, shortening inspection time.

180°

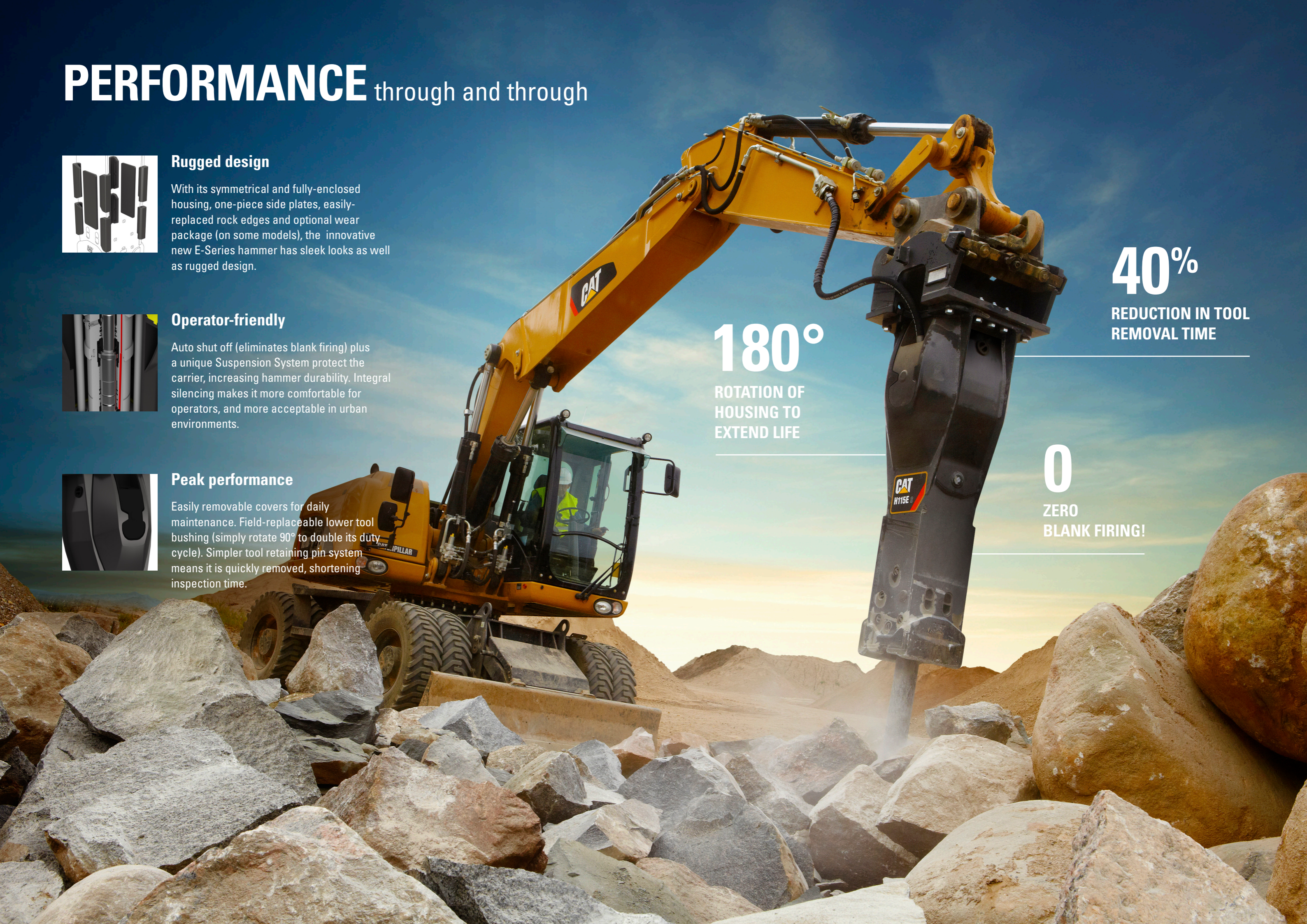
ROTATION OF HOUSING TO EXTEND LIFE

40%

REDUCTION IN TOOL REMOVAL TIME

0

ZERO BLANK FIRING!



POWER where you need it

Tough tools

Cutting a trench through a hard sedimentary layer. Demolishing reinforced concrete rubble. Quarrying volcanic rock. Tough jobs like these require powerful hammers with a lot of impact energy. The top of the line hammers in the new Cat range are just what you need, delivering breakthrough output in an eight-hour shift.

Power match

Match your Cat work tools, like hammers, to an approved Cat machine and get the most out of the standard, built-in software. Hammer control has never been easier!



PRODUCTION
SEDIMENTARY ROCK
337-1345 m²

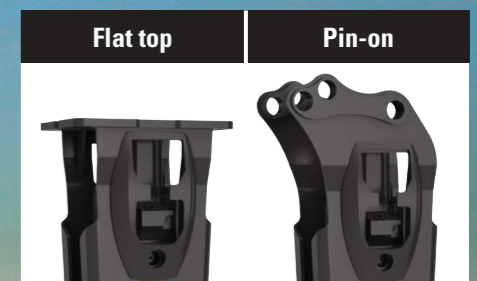


SMALL yet tough

The latest additions to the range of Cat E-Series hammers may be smaller but they are just as tough as their bigger brothers. Designed specifically for construction and demolition projects, these compact hammers excel at breaking cinder block, brick, asphalt and pavement. So now you can extend the use of your smaller building and construction equipment into site prep and light demolition work.

2

MOUNTING CONFIGURATIONS



Flat-top models allow versatility for installation on Caterpillar and equipment made by other manufacturers. Pin-on models are available for the H55E and H65E in applications that require a dedicated, hammer-equipped Cat machine.

Small size, Big benefits

- Built for convenience and comfort
- Built for performance and lasting value
- Built for quick, easy maintenance

QUIETER on site



Silenced or not

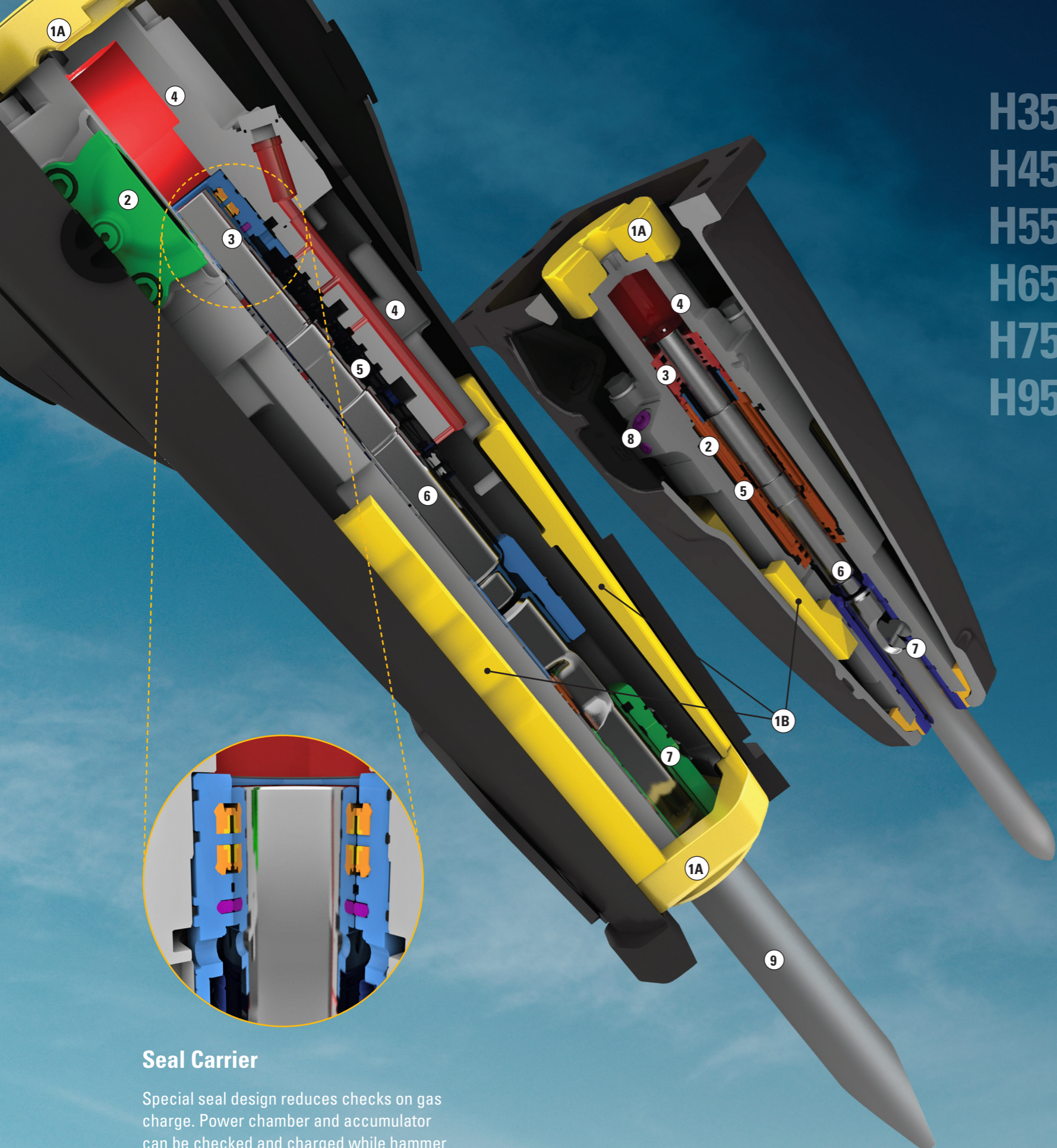
Each of the four models is available in both 'silenced' and side-plate versions. Silenced hammers use a fully enclosed housing to suppress noise; a valuable feature in sensitive work environments and when the hammer is in close proximity to the operator.

BUILT FOR CONSTRUCTION AND DEMOLITION

Applications

			Mini-Excavator			
			Skid Steer & Multi Terrain Loader		Backhoe Loader	
			H35E/Es	H45E/Es	H55E/Es	H65E/Es
Construction						
Site prep, Landscaping	Ground excavation	Pipelines, municipalities	✓	✓	✓	✓
		Frozen ground	✓	✓	✓	✓
	Asphalt cutting	Driveways, roads	✓	✓	✓	✓
	Compaction	Municipalities	✓	✓	✓	✓
Demolition						
Concrete	Light	Sidewalks, driveways	✓	✓	✓	✓
	Standard	Reinforced concrete 3"-20"			✓	✓
Masonry	Cinder block, brick	Walls	✓	✓	✓	✓
Pavement	Asphalt breaking	Driveways, roads	✓	✓	✓	✓
	Concrete, composite	Roads			✓	✓
Metallurgical						
Cleaning		Refractory linings in furnaces			✓	✓





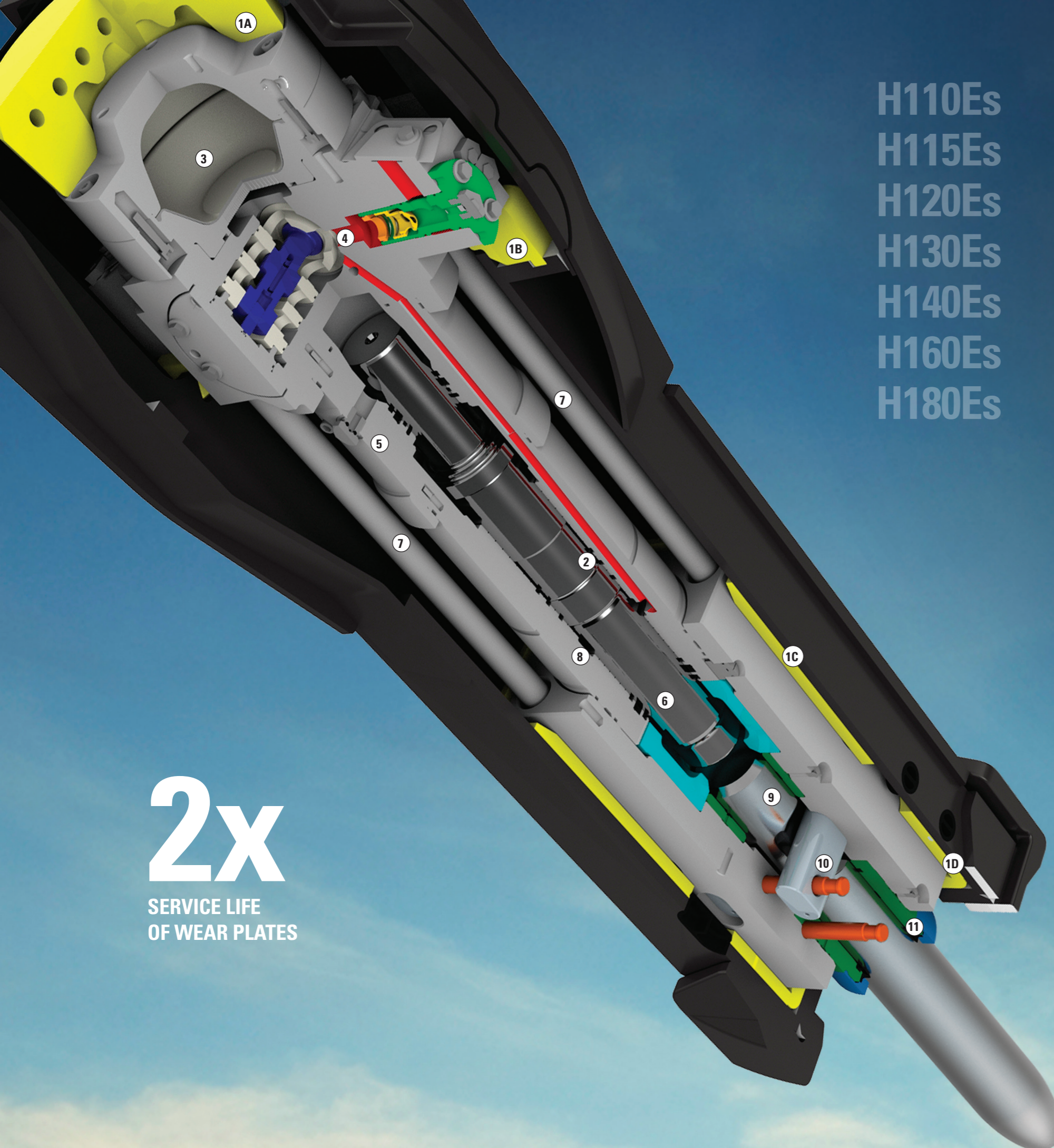
H35E/Es
H45E/Es
H55E/Es
H65E/Es
H75Es
H95Es

QUALITY is in the details

- 1 **Tri-Suspension System** – This unique suspension system comprises the suspension jacket, the upper and lower buffers. Suspension aligns the power cell and gives manageable, smooth performance.
 - 1A **Upper & Lower Buffers** – Buffers at both ends of the power cell absorb reflective forces, isolating them from the machine. Result is quiet, reliable operation and reduced operator fatigue.
 - 1B **Suspension Jacket** – The front head is isolated by the one-piece suspension jacket, which dampens vibration and sound. A lower dBa allows the hammer to be used in urban and other noise restricted areas.
- 2 **Front Accumulator** – An integral accumulator protects carrier pumps from spiking. Machine hydraulic system is protected.
- 3 **Seal Carrier** – Gas is retained in the power chamber by a series of five seals. These are engineered using technology developed for Cat Engines, and provide maximum gas retention between scheduled service intervals. When service is needed, the seal carrier is easily removed.
- 4 **Valve Body & Front Head** – Power cell is efficiently designed, with only two major components. They are held together by head bolts rather than tie rods. Bolts are simpler to install and service.
- 5 **Piston Sleeve** – The sleeve of the piston cylinder is serviceable if hydraulic contamination results in damage. This hammer is designed for cost-effective rebuilds, protecting your hammer investment.
- 6 **Auto Shut Off (ASO)** – Instantly stops the piston when breaking through material. Prevents blank firing, which is a top cause of hammer wear. Internal stresses are reduced, providing more productive hours of work. Hammer is protected, regardless of operator skill level.
- 7 **Tool Bushing** – Lower tool bushing is rotatable 90 degrees to provide a second life and lowering owning and operator costs. Bushing can be serviced in the field with common hand tools, typically in about thirty minutes.
- 8 **Plug & Perform** – Designed for convenient installation on Cat machines.
 - 8A **Ports positioned for hose protection** – Improved routing eliminates downtime from breakage.
 - 8A **No adjustment necessary for hydraulic pressures or flows.** Hammer handles full auxiliary flow and pressure, automatically adjusting to match your Cat machine. Hammer over speeding and shortened service are prevented.
- 9 **Tool** – Cat Hammer tools are robust, and feature an increased diameter for better reliability.

Seal Carrier

Special seal design reduces checks on gas charge. Power chamber and accumulator can be checked and charged while hammer is mounted on the machine.



H110Es
H115Es
H120Es
H130Es
H140Es
H160Es
H180Es

2x
SERVICE LIFE
OF WEAR PLATES

- 1 Unique Suspension System** – Improved recoil, support and guidance protects the carrier, increases hammer durability. Entire power cell is secured firmly inside housing. Noise suppression, operator feel and control is improved.
- 1A Large Top Buffer** – Absorbs vibration from the hammer, preventing damaging impulses from reaching the carrier.
- 1B Two Side Buffers** – Suspend the power cell, stabilize reflective forces and dampen tie rod loading. Side buffers can be easily inspected during daily walk-around.
- 1C Interlocking Quad Wear System** – Wear plates guide and supports the front head. Plates can be rotated 90° – doubling their service life.
- 1D Lower Buffer** – New bottom covers and absorbs vibration, dampens tie rod loading, enhances noise suppression.
- 2 Auto Shut Off (ASO)** – Instantly stops the piston when breaking through material. Prevents blank firing, which is a top cause of hammer wear. Reducing wear improves maintenance and more productive hours of work.
- 3 Accumulator** – Self-contained membrane accumulator designed for long life. Port is accessible while hammer is mounted on the machine making testing and recharging a routine task achievable in the field.
- 4 Hydraulic Valves** – A Pressure Control Valve (PCV) maintains maximum hydraulic pressure to ensure the hammer delivers all blows at full power. PCV can be easily checked and adjusted from outside the hammer in about 30 minutes. A check valve (not shown) isolates harmful pulsation spikes from the carrier hydraulic circuit.
- 5 Seal Carrier** – Contains special high performance seals to extend leak-proof operation.
- 6 Piston** – Long piston transfers a long shock wave into the rock. Tool-piston diameters are matched for maximum energy transfer.
- 7 Tie-Rods** – Larger threads improve load carrying capability, durability and reliability.
- 8 Cylinder** – Engineered to be durable and reliable with minimal maintenance and down time.
- 9 Upper Tool Bushing** – Guides the tool to optimize in-line piston to tool contact.
- 10 Tool Retaining Pins & Keepers** – Tool removal process is simplified, achievable with common hand tools. Removal time reduced by 40% over previous models.
- 11 Lower Tool Bushing** – As bushing reaches the wear limit, it can be easily rotated (90°) or replaced to bring it back into specification. Dust seals keep contaminants out.

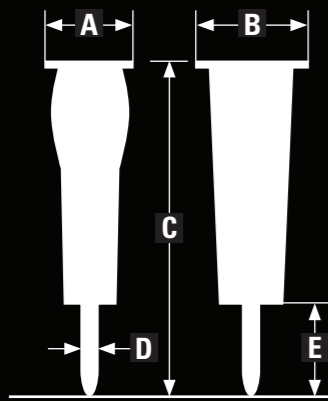
Specifications

		H35Es		H35E		H45Es		H45E		H55Es		H55E		H55E*		H65Es		H65E		H65E*	
Recommended carrier weight range	t	1.1 – 2.4		1.1 – 2.4		1.5 – 3.2		1.5 – 3.2		2.5 – 6		2.5 – 6		2.5 – 6		3 – 9		3 – 9		3 – 9	
	(lb)	(2,430 – 5,300)		(2,430 – 5,300)		(3,310 – 7,060)		(3,310 – 7,060)		(5,500 – 13,200)		(5,500 – 13,200)		(5,500 – 13,200)		(6,600 – 19,800)		(6,600 – 19,800)		(6,610 – 19,800)	
Operating weight**	kg	125 – 130		125 – 130		145 – 250		145 – 250		260 – 345		250 – 340		220 – 315		315 – 390		305 – 380		260 – 355	
	(lb)	(276 – 287)		(276 – 287)		(320 – 551)		(320 – 551)		(573 – 761)		(551 – 750)		(485 – 695)		(695 – 860)		(673 – 838)		(573 – 783)	
Impact frequency	blows/min.	600 – 1,800		600 – 1,800		780 – 1,800		780 – 1,800		600 – 1,680		600 – 1,680		600 – 1,680		720 – 1,740		720 – 1,740		720 – 1,740	
Energy Class	J (ft. lb.)	407 (300)	407 (300)	542 (400)	542 (400)	813 (600)	813 (600)	813 (600)	813 (600)	1,085 (800)	1,085 (800)	1,085 (800)	1,085 (800)	1,085 (800)	1,085 (800)	1,085 (800)	1,085 (800)	1,085 (800)	1,085 (800)	1,085 (800)	
Acceptable oil flow	lpm (gpm)	12 – 35 (3.2 – 9.2)	12 – 35 (3.2 – 9.2)	25 – 62 (6.6 – 16)	25 – 62 (6.6 – 16)	30 – 85 (7.9 – 22)	30 – 85 (7.9 – 22)	30 – 85 (7.9 – 22)	30 – 85 (7.9 – 22)	40 – 115 (10 – 30)	40 – 115 (10 – 30)	40 – 115 (10 – 30)	40 – 115 (10 – 30)	40 – 115 (10 – 30)	40 – 115 (10 – 30)	40 – 115 (10 – 30)	40 – 115 (10 – 30)	40 – 115 (10 – 30)	40 – 115 (10 – 30)	40 – 115 (10 – 30)	
Operating pressure	kPa (psi)	16,500 (2,393)	16,500 (2,393)	17,000 (2,465)	17,000 (2,465)	16,500 (2,393)	16,500 (2,393)	16,500 (2,393)	16,500 (2,393)	16,500 (2,393)	16,500 (2,393)	16,500 (2,393)	16,500 (2,393)	16,500 (2,393)	16,500 (2,393)	16,500 (2,393)	16,500 (2,393)	16,500 (2,393)	16,500 (2,393)	16,500 (2,393)	

Dimensions

		H35Es		H35E		H45Es		H45E		H55Es		H55E		H55E*		H65Es		H65E		H65E*	
A Length	mm (in)	300 (11.81)	284 (11.17)	300 (11.81)	296 (11.65)	346 (13.62)	328 (12.91)	333 (13.09)	345 (13.06)	332 (13.07)	337 (13.26)										
B Width	mm (in)	311 (12.22)	345 (13.58)	311 (12.22)	345 (13.58)	451 (17.76)	445 (17.52)	344 (13.56)	451 (17.76)	445 (17.52)	453 (17.83)										
C Hight	mm (in)	860 (33.86)	871 (34.29)	1,006 (39.61)	1,017 (40.04)	1,108 (43.62)	1,156 (45.51)	1,323 (52.08)	1,324 (52.13)	1,306 (51.43)	1,454 (57.23)										
D Tool Diameter	mm (in)	40 (1.57)	40 (1.57)	50 (1.97)	50 (1.97)	58 (2.28)	58 (2.28)	58 (2.28)	68 (2.68)	68 (2.68)	68 (2.68)										
E Tool Working Lenght	mm (in)	240 (9.45)	240 (9.45)	269 (10.59)	269 (10.59)	598 (23.54)	324 (12.76)	324 (12.76)	371 (14.61)	371 (14.61)	371 (14.61)										

SPECIFIED to suit your needs



From small hammers...



* Pin-on model.

** Working weight includes hammers, standard tool and average mounting bracket.

Specifications

			H75Es	H95Es	H110Es	H115Es	H120Es	H130Es	H140Es	H160Es	H180Es
Recommended carrier weight range	t (lb)		6-10 (13200-22100)	7-14 (15400-30900)	8-16 (17600-35200)	12-20 (26400-44000)	17-32 (37400-57200)	19-36 (41800-70400)	24-42 (52,920-92,610)	32-55 (70,560-121,275)	42-76 (92,610-167,580)
Operating weight*	kg (lb)		500 (1103)	627 (1382)	1017 (2237)	1180 (2596)	1582 (3480)	1890 (4158)	2,410 (5,314)	3,230 (7,122)	3,990 (8,798)
Impact frequency	blows/min.		840-1650	700-1260	450-1000	370-800	350-620	320-600	325-540	400-505	275-450
Energy Class	J (ft. lb.)		1356 (1000)	2034 (1500)	2305 (1700)	3390 (2500)	4067 (3000)	4745 (3500)	8,135 (6,000)	11,524 (8,500)	16,270 (12,000)
Acceptable oil flow	lpm (gpm)		70-130 (18-34)	70-150 (18-40)	60-120 (16-32)	70-130 (18-34)	100-170 (26-45)	120-220 (32-58)	160-230 (42-60)	220-300 (58-79)	220-300 (58-79)
Operating pressure	kPa (psi)		14500 (2100)	14500 (2100)	16000 (2320)	15000 (2175)	15000 (2175)	15000 (2175)	16,000 (2,320)	16,000 (2,320)	16,000 (2,320)

Dimensions

			H75Es		H95Es		H110Es		H115Es		H120Es		H130Es		H140Es		H160Es		H180Es	
A Length	mm (in)		520	(20.47)	520	(20.47)	552	(21.73)	552	(21.73)	594	(23.39)	624	(24.57)	585	(23.0)	730	(28.7)	730	(28.7)
B Width	mm (in)		512	(20.16)	512	(20.16)	585	(23.00)	585	(23.00)	585	(23.00)	585	(23.00)	670	(26.4)	736	(29.0)	758	(29.8)
C Hight	mm (in)		1493	(58.79)	1666	(65.61)	2024	(79.68)	2191	(86.26)	2372	(93.39)	2560	(100.79)	2759	(108.62)	3057	(120.35)	3257	(128.23)
D Tool Diameter	mm (in)		74.5	(2.93)	87.5	(3.4)	99.5	(3.92)	109.5	(4.31)	119.5	(4.70)	130.0	(5.10)	139.5	(5.49)	159.5	(6.28)	179.5	(7.07)
E Tool Working Lenght	mm (in)		376.1	(14.81)	416.3	(16.39)	496	(19.53)	549	(21.61)	598	(23.54)	647	(25.47)	652	(25.66)	753	(29.65)	760.5	(29.94)

...to medium and large hammers.



* Working weight includes hammers, standard tool and average mounting bracket.

TOOLS that match the job

Applications guide with standard tools



Chisel (C)

Applications

- Sedimentary and weak metamorphic rock into which tool penetrates
- Concrete

Select when:

- Working in non-abrasive but ductile rock
- Needing medium penetration rate into rock.



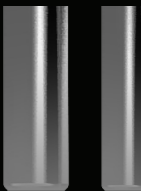
Moil (M)

Applications

- Sedimentary and weak metamorphic rock into which tool penetrates
- Concrete

Select when:

- Working in soft, non-abrasive rock
- Needing greater protection against excessive retaining pin groove wear



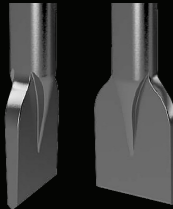
Blunt (B)

Applications

- Igneous and tough metamorphic rock into which tool doesn't penetrate

Select when:

- Demolishing concrete structure
- Boulder breaking



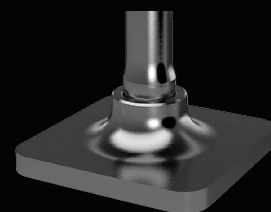
Spade (S)

Applications

- Sedimentary and weak metamorphic rock into which tool penetrates
- Concrete

Select when:

- General breaking
- Asphalt cutting



Compacting Plate (CP)

Applications

- Soil

Select when:

- Needing to compact soil

	H35E/Es	H45E/Es	H55E/Es	H65E/Es	H75E s*	H95E s*	H110E s*	H115E s*	H120E s*	H130E s*	H140Es*	H160Es*	H180Es*
1. Road building / construction													
Breaking of road surface	C, M, S	C, M, S	C, M, S	C, M, S	C, M	C, M	C, M	C, M	C, M	C, M	C, M	C, M	C, M
Asphalt cutting	C, S	C, S	C, S	C, S	C	C					C, M	C, M	C, M
Breaking uneven bedrock to lay a road							C, M	C, M	C, M	C, M	C, M	C, M	C, M
Trench excavation for drainage					C, M	C, M	C, M	C, M	C, M	C, M	C, M	C, M	C, M
Demolition of bridges	C, M	C, M	C, M	C, M	C, M	C, M	C, M	B, C, M	B, C, M	B, C, M	B, C, M	B, C, M	B, C, M
Heavily reinforced bridge pillars											B	B	B
Compacting soils	CP	CP	CP	CP									
Making holes (for traffic signs, lamp posts)	M	M	M	M	M	M	M	M	M	M	M	M	M
Breaking of frozen ground	C, M, S	C, M, S	C, M, S	C, M, S	C, M	C, M	C, M	C, M, P	C, M	C, M	C, M	C, M	C, M
2. Demolition / housing development													
Demolition of concrete walls, roofs, floors	C, M	C, M	C, M	C, M	C, M	C, M	C, M	B, C, M	B, C, M	B, C, M	B, C, M	B, C, M	B, C, M
Demolition of light, reinforced concrete (<20")	M	M	M	M	M	M	M	B, M	B, M	B, M			
Brick walls	C, M	C, M	C, M	C, M	C, M	C, M	C, M	B, C, M	B, C, M	B, C, M	B, C, M	B, C, M	B, C, M
Rock trenches for mains/water supply/utilities					C, M	C, M	C, M	C, M	C, M	C, M	C, M	C, M	C, M
Rock excavation for foundation					C, M	C, M	C, M	C, M	C, M	C, M	C, M	C, M	C, M
Mass excavation of rock for industrial building bases									C, M	C, M	C, M	C, M	C, M
Massive reinforced concrete foundations										M	M	M	M
Separating rebar from concrete (for recycling)	C, M	C, M	C, M	C, M	C, M	C, M	C, M	B, C, M	B, C, M	B, C, M	B, C, M	B, C, M	B, C, M
3. Quarrying / open cast mining													
Secondary boulder breaking							B	B	B	B	B	B	B
Primary breaking of rock									C, M	C, M	C, M	C, M	C, M
Breaking oversizes on a crusher/feeder/feed chute						B, C, M,	C, M	B, C, M,	B, C, M,	B, C, M,	B, C, M,	B, C, M,	B, C, M,
4. Underground applications													
Scaling					C	C	C	C					
5. Metallurgical applications													
Breaking of slag in casting ladles						C, M	C, M	C, M					
Breaking of slag in converter openings						C, M	C, M	C, M	C, M	C, M	C, M		
Cleaning of castings						C, M	C, M	C, M					
Breaking of massive steel slag												C, M	C, M
Breaking of aluminum electrolyze slag					C, M	C, M	C, M	C, M	C, M	C, M	C, M		
Breaking of refractory linings in furnaces	C, M	C, M	C, M	C, M	C, M	C, M							
6. Other applications													
Demolition/Rock breaking under water								C, M	C, M	C, M	C, M	C, M	C, M

*E series tools not compatible for use with previous hammer models.

All our tools are heat-treated and matched to piston diameter and mass to deliver full blow energy.

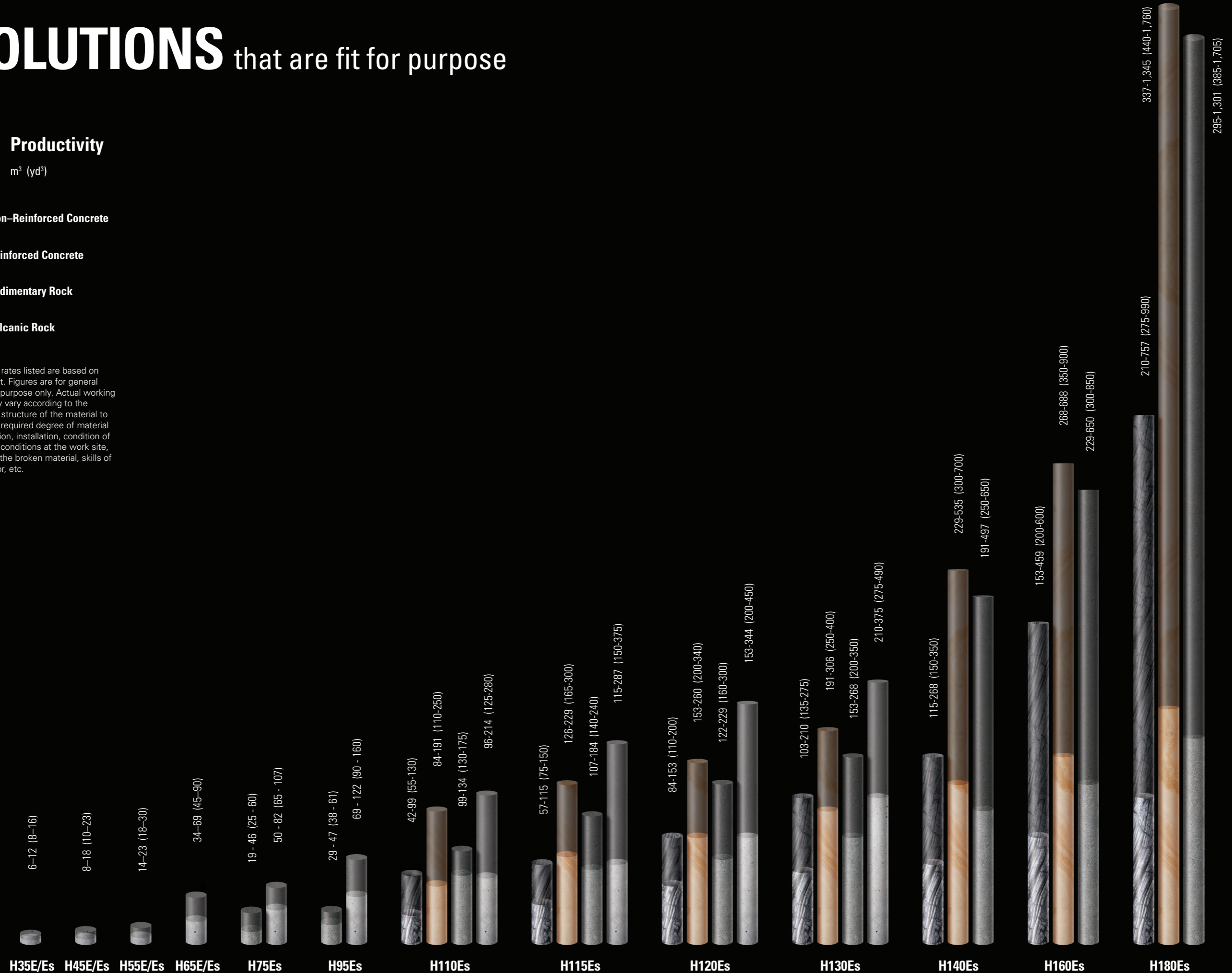
SOLUTIONS that are fit for purpose

8hr Productivity

m³ (yd³)

- Non-Reinforced Concrete
- Reinforced Concrete
- Sedimentary Rock
- Volcanic Rock

Production rates listed are based on 8-hour shift. Figures are for general estimation purpose only. Actual working results may vary according to the quality and structure of the material to be broken, required degree of material size reduction, installation, condition of the carrier, conditions at the work site, haulage of the broken material, skills of the operator, etc.



UNIQUE capabilities

THE INSIDE STORY

Take a look inside the birthplace of the E-Series Hammers

Designed to address your needs

The Cat E-series hammers are designed & developed by Cat specialists from several disciplines. Together, they form a world-class team with decades of experience in hammer design. Cat designers are responsible for the complete hammer concept, ensuring that our hammers and machines work as a seamless system.

Engineered to last

Cat engineering turns our designers' vision into reality. Ensuring that each Cat hammer inherits the DNA of Cat machines and their reputation for performance, quality and serviceability. In this dedicated hammer facility, E-Series hammers are engineered using proven Cat methods and tested according to stringent Cat specifications.

Manufactured to the highest standards

As the world's number one producer of construction and mining equipment, and the industry's largest manufacturer of work tools, Cat's record of manufacturing excellence is unsurpassed. Leveraging the Caterpillar Production System and 6 sigma principles, you can be assured that Cat hammers are made to be the best. And that's a commitment!



SERVICE that's second to none

Cat E-series hammers are sold through the same Caterpillar dealers as Cat machines. That gives you access to an integrated service and support network – a single organisation for machine and work tool parts and service. No other manufacturer can offer you the same.

You can count on your Cat dealer to help keep your equipment in top condition, so that you can work more efficiently and productively. All day. Every day. And that's a promise that goes beyond just parts, repairs and warranty work. It includes innovative financial arrangements like barter transactions and counter purchase agreements.

Your local Cat Dealer is the single best source for everything you need to keep your equipment up and running. Maybe your business has full maintenance and service facilities of its own. Or maybe you prefer to outsource all of your equipment care so you can focus on your core business. Either way, your Cat Dealer can provide whatever level of support you need, from online to on-site.

FLEXIBILITY THROUGH RENTAL Precisely the hammer you need

Cat Rental gives you access to a huge range of equipment, including hammers, to offer you the right match for every job – and any Cat machine. Now that's flexibility! Together with your Cat® dealer, simply select the best tool for the performance and productivity you need.

- Global Cat dealer network with 1,600 locations
- Cat Rental locations offer skilled support & technical services
- One call or a single click, and what you need is on its way

Visit catrentalstore.com to find out what Cat Rental can do for you.

191

CAT DEALERS WORLD WIDE