

M320D2

Wheeled Excavator



Engine

Engine Model	Cat® C7.1 ACERT™ Technology
Emission Standards	U.S. EPA Tier 3/EU Stage IIIA equivalent emission standards and China III Nonroad emission standards
Net Power (Maximum) ISO 9249 at 1,800 rpm	124 kW (169 hp)
Net Power (Maximum) ISO 14396 at 2,000 rpm (gross)	128.8 kW (173 hp)

Weights

Operating Weight	19 000 to 19 800 kg
------------------	---------------------

Bucket Specifications

Bucket Capacities	0.35 to 1.18 m ³
-------------------	-----------------------------

Working Ranges

Maximum Reach at Ground Level	9450 mm
Maximum Digging Depth	6200 mm

Drive

Maximum Travel Speed	37 km/h
----------------------	---------

Features

Performance

Provides fast cycle times, great lift capacity and high bucket and stick forces. The new engine offers great power and reliability, while optimizing your fuel consumption. This combination maximizes your productivity in any job to maximize your profits.

Serviceability

For increased safety and reduced downtime, all daily maintenance points are accessible from ground level. Centralized greasing systems allow quicker lubrication of several critical points.

Operator Comfort

The operator station maximizes comfort while increasing safety. The available air-suspension seat with heated/cooled cushions improves operator comfort. Safety is enhanced by various integrated features like the color monitor displaying the view from the standard rear-mounted camera.

Versatility

Various undercarriage and front linkage possibilities. See the machine overall performance in different applications, make the most of it thanks to the available optional features and Cat attachments and you'll get the right machine just for your applications' needs.

Contents

Responsible Design	4
Engine	5
Premium Comfort	6
Simplicity and Functionality	7
Undercarriage	8
Hydraulics	9
Booms and Sticks	10
Smart Technologies	11
Attachments.....	12
Safety	14
Complete Customer Care.....	14
Serviceability	15
Integrated Technologies	16
Specifications.....	17
Standard Equipment.....	29
Optional Equipment.....	30
Notes.....	31





CAT
M320D²





Responsible Design

Thinking Generations Ahead

Fuel Efficiency and Low Exhaust Emissions

The Cat C7.1 ACERT engine meets China III Nonroad emission standards, and meets Tier 3/Stage IIIA equivalent emission standards, while offering optimum performance, high fuel efficiency and reliability. This means more work done in a day, low operating cost and minimal impact on our environment.

Quiet Operation

Low sound levels, as a result of the variable on-demand fan speed and remote cooling system.

Technologies and Longer Service Intervals

Product Link™ allows remote monitoring of the machine and helps improve your fleet efficiency as well as reduce your costs. Your Cat dealer can help extend service intervals, meaning fewer required fluids and disposals, all adding up to lower operating costs.

Fewer Leaks and Spills

Lubricant filters and various drains are designed to minimize spills. Cat O-Ring Face Seals, Cat XT™-6 ES hoses help prevent leaks that can reduce performance.

Cat Certified Used

This program is a key element in the range of solutions offered by Caterpillar and Cat dealers throughout the world to help customers achieve growth at the lowest cost while eliminating waste. Used equipment is inspected, guaranteed and ready for work and customers will benefit from a Caterpillar warranty.

Engine

Power, Reliability, and Fuel Economy



The Power and Performance You Need

The Cat engine meets China III Nonroad emission standards and meets Tier 3/Stage IIIA equivalent emission standards. It delivers a maximum net power (Acc. ISO 14396) of 128.8 kW at a rated speed of 2,000 rpm.

On-demand Strategies for Fuel Efficiency

Smart Engines

The engine is electronically controlled and equipped with the Common Rail Fuel System. Smart engines automatically operate at the most efficient operating point depending on the application, to save fuel with no impact on performance.

Demand Fan Cooling System

The electronically controlled hydraulic motor drives a variable speed on-demand fan, resulting in optimized fuel consumption.

One-Touch Low Idle and Automatic Engine Speed Control

The Automatic Engine Speed Control reduces engine speed if no operation is performed after a pre-set amount of time, reducing fuel consumption and sound levels. The One-Touch Low Idle Control allows you to instantly reduce the engine speed with one touch.

Eco and Work Modes

- The Eco Mode can reduce significantly your fuel consumption while preserving productivity results for most applications
- The Travel Mode optimizes driveline performance while preserving fuel
- The Power Mode is the best compromise between productivity and fuel efficiency for heavy load applications.

Premium Comfort

Keeps Operators Productive All Shift Long



Comfortable Seat Options

Both standard and comfort seat options give your operators all the comfort they need for a long day of work. The comfort seat is equipped with a passive seat climate control, air suspension with automatic adjustment to the operator's weight, lumbar support and a seat heater.

Low Vibration/Sound Levels

The rubber-mounted cab includes thick steel tubing. Associated with the comfortable air-suspended seat, it helps reduce vibrations and sound levels.

Comfortable Operation

Two-way pedals for travel and auxiliary circuits provide increased floor space, reducing the need to change positions. The steering column is easily tiltable thanks to a large pedal at its base.

Automatic Climate Control

Easy adjustment of the cab temperature with filtered ventilation to make your operators comfortable in all climates.

Storage Compartments

A large compartment behind the seat provides sufficient room to store a large lunch box or a hard hat. A cover secures the contents during machine operation. Several other dedicated areas can hold large mugs, MP3 players or a cell phone.

Power Supply and MP3 Radio

The cab includes a 12V-7A power supply socket for charging electronic devices such as MP3 players, laptops and cell phones. A CD/MP3 radio is available.



Simplicity and Functionality

For Ease of Operation

Ergonomic Layout and Smart Controls

The operator station is designed for simplicity, functionality and ease of operation. Frequently used switches are centralized on the right-hand switch console. Features like the heavy lift mode, ride control* or SmartBoom™* will not only increase your productivity but also help reduce fatigue for your operators.

Large Color Monitor

Easy to read and in local language, you can rely on the high-resolution LCD monitor, which will keep you aware of any important information. “Quick Access” buttons allow a quick selection of favorite functions. The tool select function lets you preset up to ten different hydraulic attachments for quick tool changes.

Optimized Visibility

All glass is affixed directly to the cab, eliminating the use of window frames. The 70/30 split front windshield stores the upper portion above the operator and is easy to release. A large skylight provides upward visibility and includes a retractable sunscreen. The parallel wiper system covers the entire front windshield.

Standard Rearview Camera

Together with the best in class visibility to all sides, the rear view displayed on the monitor helps ensure a safe operation.

*Not available in all territories like Africa, Middle East and Eurasia. Please contact your Cat dealer for details.

Undercarriage

Strength and Versatility on Wheels



High Travel Speed (Maximum 37 km/h)

Reduces travel time between sites.

Stabilizers and Dozer Blade – Versatile Solutions to Do It All.

Various undercarriage configurations are available to provide the best solution for your work environment including dozer blades and/or outriggers. Outriggers can be individually controlled to horizontally stabilize the machine even on slight slopes.

Smart Travel Alarm (Adjustable)

The alarm sounds when the machine starts moving. The Auto Mode stops the alarm when it has been sounding for an uninterrupted 10-second interval. It can also be disabled (optional).



Heavy Duty Axles

Rigidity and long life with effective transmission protection and heavy-duty axles. The transmission is mounted directly on the rear axle for protection and optimum ground clearance. The front axle offers wide oscillating and steering angles.

Advanced Disc Brake System

Minimizes the rocking effect when working free on wheels. The disc brake system acts directly on the hub instead of the drive shaft to avoid planetary gear backlash. The axle design lowers life costs. Oil change intervals can be up to 2,000 working hours depending on the machine usage.



Hydraulics

Fast Cycle Times, Heavy Lift Capacity

Dedicated Swing Pump

This closed hydraulic circuit being dedicated to the swing only maximizes swing performance without reducing power to the other hydraulic functions, resulting in smoother combined movements.

Proportional Auxiliary Hydraulics, Tremendous Versatility

The versatility of the hydraulic system can be expanded to utilize a wide variety of hydraulic work tools. Basic controls include (optional):

- The Multi-Combined Valve allows the operator to select up to ten preset work tools from the monitor.
- A medium pressure function providing proportional flow, ideal for tilting buckets or rotating tools
- A hammer circuit (one-way high pressure)
- A dedicated circuit to operate hydraulic quick couplers.

Heavy Lift Mode

Maximizes your lifting performance by boosting the lifting capacity of the machine up to 7%.

Adjustable Swing Aggressiveness

Allows you to adjust the aggressiveness of the machine swing to match the operator's preferences.

Stick Regeneration Circuit

Increases efficiency and helps enhance controllability for higher productivity.

Booms and Sticks

Maximum Flexibility – High Productivity

Rugged Performance

Booms and sticks are welded, box section structures with thick, multiplate fabrications in high stress areas for the tough work you do.

Flexibility

The choice of various booms and sticks provides the right balance of reach and digging forces for all applications.

Sticks

- **Medium stick (2500 mm)** for greater crowd force and lift capacity
- **Long stick (2800 mm)** for greater depth and reach

Booms

- **Variable Adjustable (VA)** – improved right side visibility and roading balance. When working in tight quarters or lifting heavy loads, the VA boom offers the best flexibility.
- **One-Piece Boom** – Fits best for all standard applications such as truck loading and digging. A unique straight section in the curve of the side plate reduces stress flow and helps increase boom life.



Smart Technologies

Boosting Up Productivity

SmartBoom*

Reduces stress and vibration.

Rock Scraping

Scraping rock and finishing work is easy and fast. SmartBoom simplifies the task and allows more focus on stick and bucket, while the boom freely goes up and down without using pump flow.

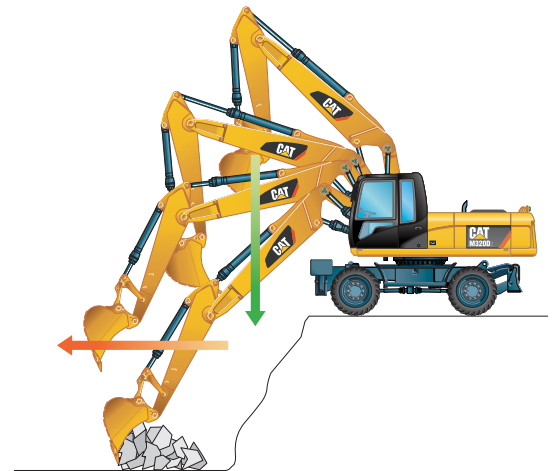
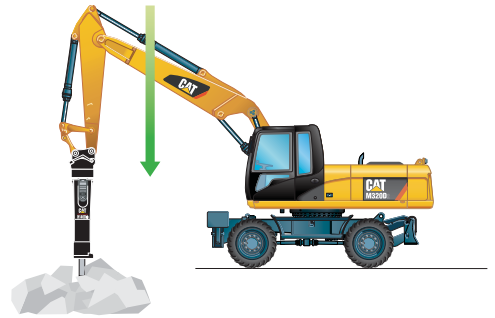
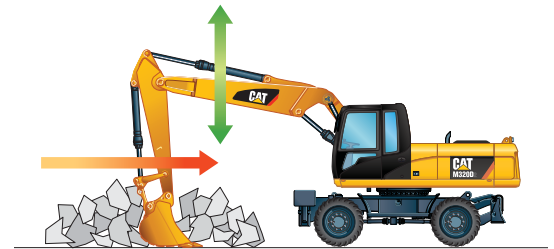
Hammer Work

The front parts automatically follow the hammer while penetrating the rock. Blank shots or excessive force on the hammer are avoided resulting in longer life for the hammer and the machine. Similar advantages with vibratory plate compactors.

Truck Loading

Loading trucks from a bench is more productive and fuel efficient as the return cycle is reduced while the boom down function does not require pump flow.

*Not available in all territories like Africa, Middle East and Eurasia.
Please contact your Cat dealer for details.



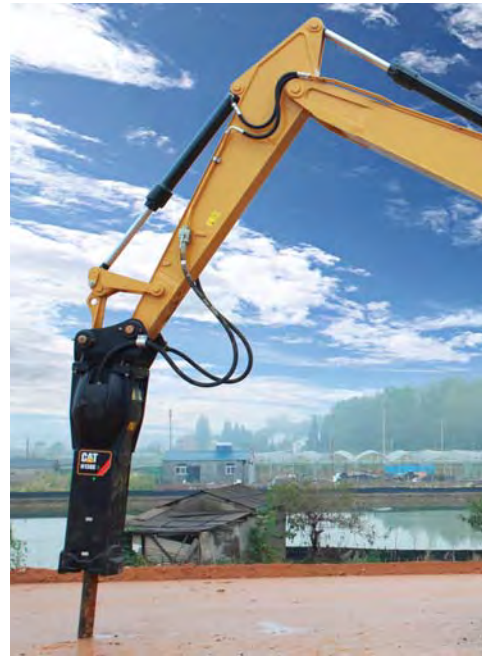
Ride Control*

Fast travel speed with more comfort.

The ride control system lets you travel faster over rough terrain with improved ride quality for the operator. Accumulators are acting as shock absorbers to dampen the front part motion. It can be activated through a button located on the soft switch panel in the cab.

*Not available in all territories like Africa, Middle East and Eurasia. Please contact your Cat dealer for details.





Attachments

Optimize Your Performance



Save Time with Every Tool Change

Perform tool changes in seconds ... Combine a quick coupler with common attachments that can be shared between the same size machines and you'll get flexibility on every job. The hydraulic quick coupler automates tool exchange, so operators can change work tools quickly, from the safety and comfort of their cabs. Make your operators more efficient and productive.



Power Match

Match your Cat hydraulic work tools to your Cat machine, and get the most out of the standard, built-in software. Work tool changes have never been easier!



Get the Most from Your Machine

If you have multiple tasks to get done in a typical work day, the M320D2 can help. Highly versatile, you can easily expand all the possibilities it offers by utilizing any of the variety of Cat attachments.

Change Jobs Quickly

A quick coupler brings the ability to quickly change attachments, and increase your flexibility. Operators will be encouraged to use the right tool for the job and fewer machines will be needed.

Dig, Load and Landscape

A wide range of buckets offers solutions for digging, excavating, trenching, loading and finishing. Ditch Cleaning buckets are suitable for grading and finishing in landscaping applications or for loading loose material that is stockpiled, where teeth would damage the surface.



Sort and Handle Material

With increasing environmental regulations, you need efficient ways to deal with waste. Save on transportation, manpower and dumping costs with Cat grapples by sorting debris at source and trucking it separately. And when you need good penetration, you can count on Cat digging grapples.

Build, Compact and Maintain Roads

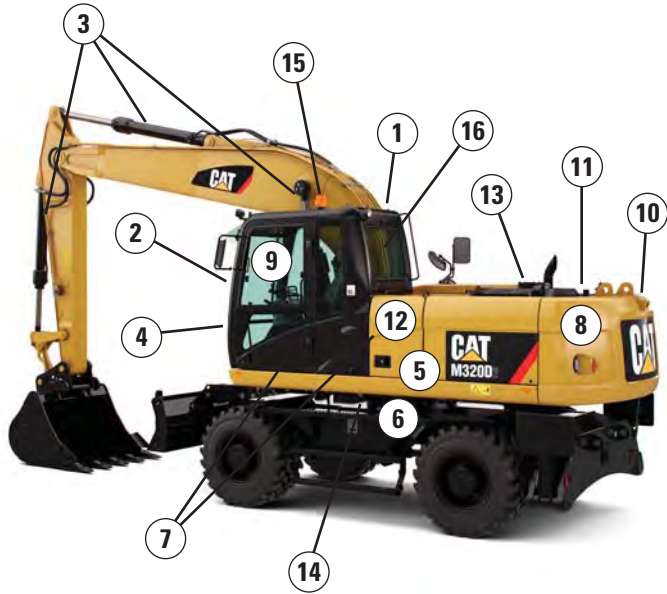
Whether you do finish grading with leveling buckets, ditch cleaning, sewer and water, or compaction, the machine in combination with the appropriate work tool will do the job quickly.



Attachment availability varies depending on territories. Contact your Cat dealer to learn more about the specific attachment choices available in your region.

Safety

Make Sure You're Safe



- 1 FOPS Certified cab
- 2 Falling objects guards "bolt-on" compatibility (optional guards)
- 3 Anti-drift devices for booms, sticks and buckets
- 4 Sound proofing
- 5 Ground level maintenance
- 6 Punched, anti-slippery walking surfaces
- 7 Three points of contact ingress
- 8 LED rear roading lights
- 9 Excellent visibility
- 10 Standard rearview camera
- 11 Adjustable travel alarm
- 12 Emergency shut-off switch
- 13 Battery disconnect switch
- 14 Swing mechanical lock
- 15 Rotating beacon (optional)
- 16 Emergency hammer and exit

Complete Customer Care

Your Cat Dealer Will Support You Like No Other

From helping you to choose the right machine to knowledgeable on-going support, Cat dealers provide the best-in-sales and services.

- **Best long-term investment** with financing options and services
- **Productive operation** with training programs
- **Preventive maintenance** and guaranteed maintenance contracts
- **Uptime**, with best-in-class parts availability
- **Repair, rebuild, or replace?** Your dealer can help evaluate the best option.





Serviceability

When Uptime Counts

Extended Service Intervals to Reduce Costs

- **S-O-SSM Oil Sampling Analysis** – Enhances performance and durability. This system can predict potential failures and can extend hydraulic oil change intervals up to 6,000 hours.
- **Engine Oil (low ash oil)** – Cat engine oil is more cost effective and provides industry-leading performance. Engine oil change interval can be extended up to 500 hours.
- **Capsule Filter** – The hydraulic return filter prevents from contamination when the hydraulic oil is changed.
- **Fuel Filters and Water Separator** – The new filtration system is suited for challenging work conditions, even when using poor fuel quality. The new primary filter offers increased filtration capabilities and works in conjunction with a water separator. Fuel filters are designed to last up to 500 hours (250 hours with very poor fuel quality). The primary fuel filter includes a fuel priming pump, a water level switch and a visual restriction indicator.
- **Remote Greasing** – Centralized or grouped points for hard to reach and critical locations.

Easy Ground Level Maintenance

Our excavators are designed with the operator and technician in mind. Door opening is assisted with gas springs.

- **Front Compartment** – Ground level access to the batteries, air-to-air aftercooler, air conditioner condenser and the air cleaner filter.
- **Swing-out Air Conditioner Condenser** allows cleaning on both sides and access to the air-to-air aftercooler.
- **Engine Compartment** – The longitudinal layout ensures accessibility from ground level.

Integrated Technologies

It Pays to Know

Cat Connect makes smart use of technology and services to improve your job site efficiency. Using the data from technology-equipped machines, you'll get more information and insight into your equipment and operations than ever before.

Cat Connect technologies offer improvements in these key areas:



EQUIPMENT
MANAGEMENT

Equipment Management – increase uptime and reduce operating costs.



PRODUCTIVITY

Productivity – monitor production and manage job site efficiency.



SAFETY

Safety – enhance job site awareness to keep your people and equipment safe.

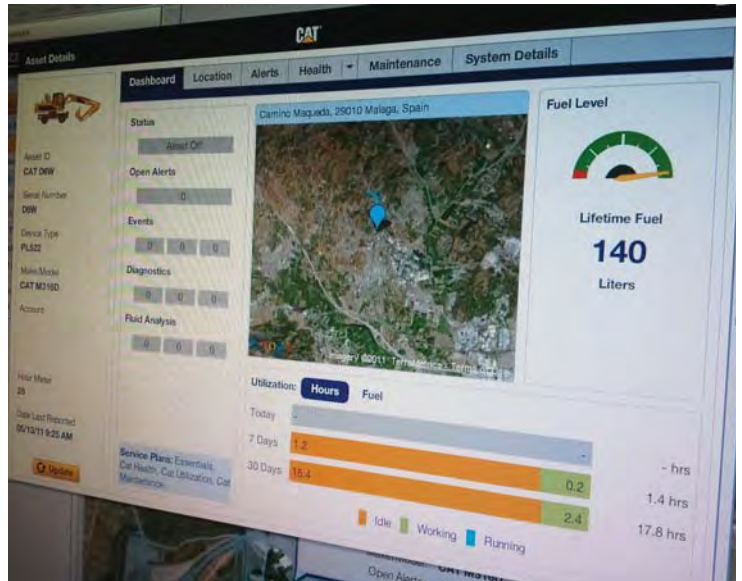
Featured Cat Connect technologies include the following:

Link

Link technologies provide wireless capability to machines to enable two-way transfer of information collected by on-board sensors, control modules, and other Cat Connect technologies.

Manage Your Machine Remotely

Cat Product Link is a system that is deeply integrated into the machine monitoring system to take the guesswork out of managing your equipment. The system tracks location, hours, fuel usage, productivity, idle time, and diagnostic codes and shares it with you through VisionLink® to help you maximize efficiency, improve productivity, and lower operating costs.



CAT® CONNECT



EQUIPMENT
MANAGEMENT



PRODUCTIVITY



SAFETY



SUSTAINABILITY

M320D2 Wheeled Excavator Specifications

Engine

Engine Model	Cat C7.1 ACERT Technology ⁽¹⁾
Ratings	2,000 rpm
Engine Gross Power (maximum)	
ISO 14396	128.8 kW (173 hp)
ISO 14396 (metric)	175 hp
Net Power (Rated) ⁽²⁾	
ISO 9249/SAE J1349	123.5 kW (166 hp)
ISO 9249/SAE J1349 (metric)	168 hp
80/1269/EEC	123.5 kW (166 hp)
Net Power (Maximum)	
ISO 9249/SAE J1349	123.5 kW (166 hp)
ISO 9249/SAE J1349 (metric)	168 hp
80/1269/EEC	123.5 kW (166 hp)
Bore	105 mm
Stroke	135 mm
Displacement	7.01 L
Maximum Torque at 1,400 rpm	862 N·m
Number of Cylinders	6

⁽¹⁾ Meets China III Nonroad emission standards and meets Tier 3/Stage IIIA equivalent emission standards.

⁽²⁾ Rated speed 2,000 rpm. Constant power from 1,400-2,000 rpm.

- Net power advertised is the power available at the flywheel when engine is equipped with air cleaner, alternator, and cooling fan running at intermediate speed.
- No deratings required up to 3000 m altitude. Automatic derating occurs after 3000 m.

Transmission

Forward/Reverse	
1st Gear	8 km/h
2nd Gear	37 km/h
Creeper Speed	
1st Gear	3 km/h
2nd Gear	13 km/h
Drawbar Pull	99 kN
Maximum Gradeability	60%

Swing Mechanism

Swing Speed	9.2 rpm
Swing Torque	43.4 kN·m

Undercarriage

Ground Clearance	370 mm
Maximum Steering Angle	35°
Oscillation Axle Angle	±8.5°
Minimum Turning Radius	
Standard Axle	
Outside of Tire	6400 mm
End of VA Boom	7000 mm
End of One-Piece Boom	8300 mm

Service Refill Capacities

Fuel Tank (total capacity)	385 L
Cooling System	36.5 L
Engine Crankcase	18.5 L
Rear Axle Housing (differential)	14 L
Front Steering Axle (differential)	10.5 L
Final Drive	2.5 L
Powershift Transmission	2.5 L

Weights

Operating Weights*	19 000 kg-19 800 kg
Weights	
VA Boom	
Front Dozer, Rear Outriggers	19 800 kg
One-Piece Boom	
Front Dozer, Rear Outriggers	19 300 kg
Sticks**	
Medium (2500 mm)	930 kg
Long (2800 mm)	970 kg
Counterweight	
Standard	4000 kg

*Operating weight includes medium stick, 4000 kg counterweight, full fuel tank, operator, 245 kg quick coupler, 695 kg bucket and dual pneumatic tires. Weight varies depending on configuration.

**Includes cylinder, bucket linkage, pins and standard hydraulic lines.

M320D2 Wheeled Excavator Specifications

Hydraulic System

Tank Capacity	170 L
System	270 L
Maximum Pressure	
Implement Circuit	
Normal	350 bar (35 000 kPa)
Heavy Lift	370 bar (37 000 kPa)
Travel Circuit	350 bar (35 000 kPa)
Auxiliary Circuit	
High Pressure	350 bar (35 000 kPa)
Medium Pressure	185 bar (18 500 kPa)
Swing Mechanism	310 bar (31 000 kPa)
Maximum Flow	
Implement/Travel Circuit	280 L/min
Auxiliary Circuit	
High Pressure	250 L/min
Medium Pressure	49 L/min
Swing Mechanism	112 L/min

Tires

Standard	10.00-20 (Dual Pneumatic)
----------	---------------------------

Blade

Blade Type	Parallel
Blade Roll-Over Height	576 mm
Width	2550 mm

Sustainability

Engine Emissions	Meets China III Nonroad Meets Tier 3/Stage IIIA equivalent
Fluids (Optional)	
Biodiesel up to B20	Meets EN14214 or ASTM D6751 with EN590 or ASTM D975 Standard Mineral diesel fuels
Vibration Levels	
Maximum Hand/Arm	
ISO 5349:2001	<2.5 m/s ²
Maximum Whole Body	
ISO/TR 25398:2006	<0.5 m/s ²
Seat Transmissibility Factor	
ISO 7096:2000-spectral class EM5	<0.7 m/s ²

Standards

Cab/ROPS*	ROPS (Rollover Protective Structure) cab offered by Caterpillar meets ROPS criteria ISO 12117-2:2008
Cab/FOPS	Cab with FOPS (Falling Object Protective Structure) meets FOPS criteria ISO 10262:1998 and SAE J1356:2008
Cab/Sound Levels	Meets appropriate standards as listed below

*Not available in all markets. Available only for Africa, Middle East and Eurasia. Please contact your Cat dealer for details.

Sound Performance

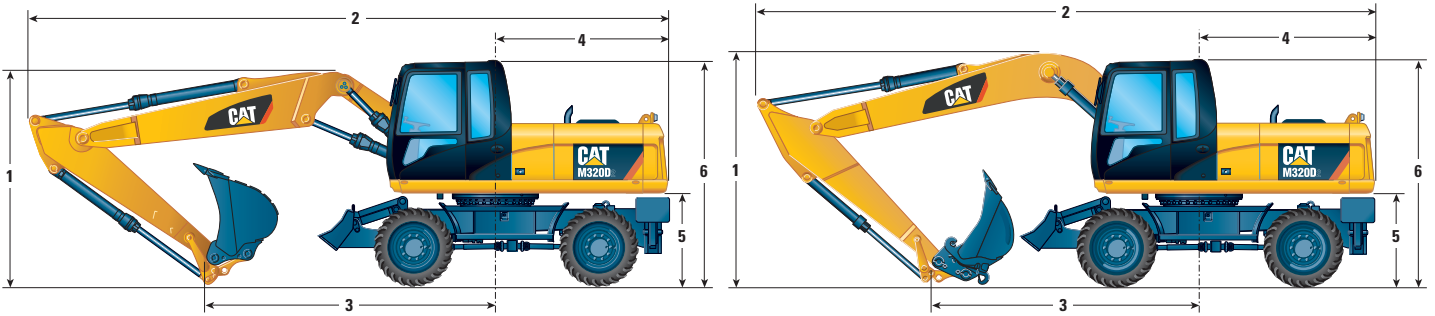
Operator Sound	
2000/14/EC	74 dB(A)
Spectator Sound	
2000/14/EC	103 dB(A)

- Operator Sound – The operator sound level is measured according to the procedures specified in 2000/14/EC, for a cab offered by Caterpillar, when properly installed and maintained and tested with the door and windows closed.
- Exterior Sound – The labeled spectator sound power level is measured according to the test procedures and conditions specified in 2000/14/EC.
- Hearing protection may be needed when operating with an open operator station and cab (when not properly maintained for doors/windows open) for extended periods or in noisy environment(s).

M320D2 Wheeled Excavator Specifications

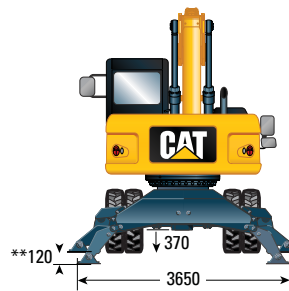
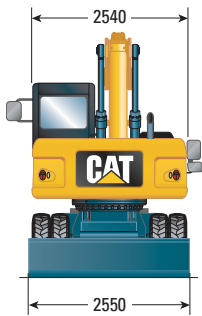
Dimensions

All dimensions are approximate.

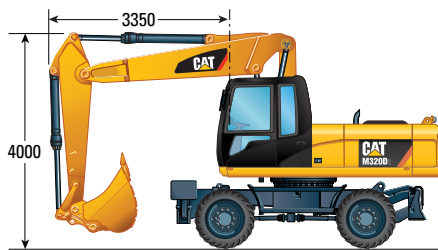


Boom Type	Variable Adjustable Boom 5260 mm		One-Piece Boom 5350 mm		
	Stick Length	mm	2500	2800	2500
1 Shipping Height with Guard Falling Object (highest point between boom and cab)	mm	3300	3300	3300	3300
2 Shipping Length	mm	8850	8820	8960	8950
3 Support Point	mm	3650	3510	3640	3500
4 Tail Swing Radius	mm	2565		2565	
5 Counterweight Clearance	mm	1280		1280	
6 Cab Height – No Guard Falling Object	mm	3170		3170	
	With Guard Falling Object	mm	3300		3300
Overall Machine Width	mm	2550		2550	

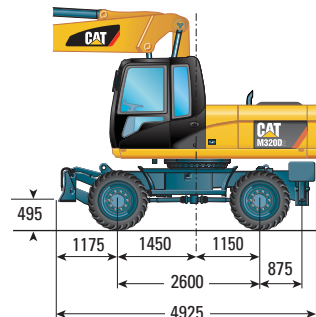
** Maximum tire clearance with outrigger fully down



Roading position with 2500 mm stick

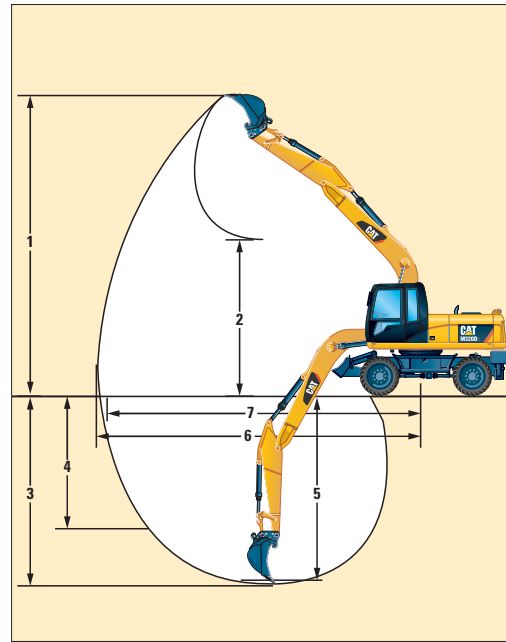
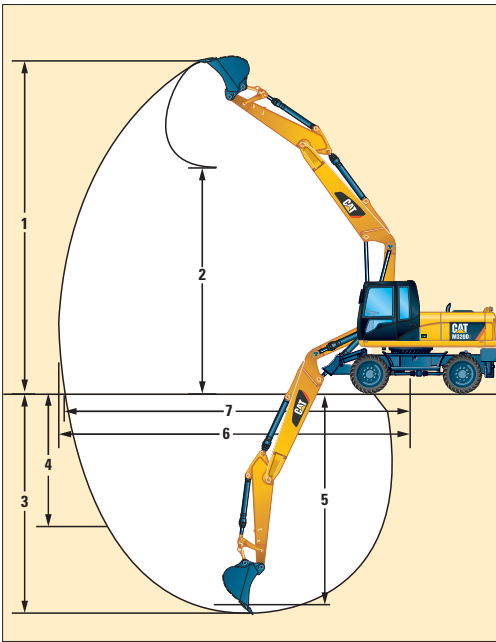


Undercarriage with 1 set of outriggers and dozer



M320D2 Wheeled Excavator Specifications

Working Ranges



Boom Type		Variable Adjustable Boom 5260 mm		One-Piece Boom 5350 mm	
		2500	2800	2500	2800
Stick Length	mm	2500	2800	2500	2800
1 Digging Height	mm	9950	10 165	8940	9095
2 Dump Height	mm	6970	7180	6140	6290
3 Digging Depth	mm	6035	6330	5980	6280
4 Vertical Wall Digging Depth	mm	4230	4510	3935	4225
5 Depth 2.5 m Straight Clean-Up	mm	5930	6235	5755	6070
6 Reach	mm	9450	9735	9470	9750
7 Reach at Ground Level	mm	9270	9565	9295	9580
Bucket Forces (ISO 6015)	kN	136	136	136	136
Stick Forces (ISO 6015)	kN	95	87	95	87

Values 1-7 are calculated with bucket (1200GD-CW30) (0.91 m³) with TIP GP-GEN DUTY (K80) and CW-30 quick coupler with a tip radius of 1535 mm.

Bucket and stick force values are calculated with heavy lift on (no quick coupler) and a tip radius of 1298 mm.

M320D2 Wheeled Excavator Specifications

Bucket Specifications and Compatibility

Contact your Cat dealer for special bucket requirements.

Without Quick Coupler				Variable Adjustable Boom 5260 mm								One-Piece Boom 5350 mm								
Stick Length				2500 mm				2800 mm				2500 mm				2800 mm				
	Width	Capacity	Weight	Free on wheels	Dozer lowered	1 set of stabilizers lowered	Fully stabilized	Free on wheels	Dozer lowered	1 set of stabilizers lowered	Fully stabilized	Free on wheels	Dozer lowered	1 set of stabilizers lowered	Fully stabilized	Free on wheels	Dozer lowered	1 set of stabilizers lowered	Fully stabilized	
	mm	m ³	kg																	
General Duty (GD)	600	0.41	474	Orange	Orange	Orange	Orange	Orange	Orange	Orange	Orange	Orange	Orange	Orange	Orange	Orange	Orange	Orange	Orange	Orange
	1200	1.00	695	Green	Yellow	Orange	Orange	Green	Green	Orange	Orange	Green	Yellow	Orange	Orange	Green	Yellow	Orange	Orange	Orange
	1300	1.09	724	Green	Yellow	Orange	Orange	White	Green	Orange	Orange	Green	Yellow	Orange	Orange	Green	Green	Orange	Orange	Orange
	1400	1.18	756	White	Green	Orange	Orange	White	Green	Orange	Orange	Green	Green	Orange	Orange	White	Green	Orange	Orange	Orange
Heavy Duty (HD)	1200	1.00	733	Green	Yellow	Orange	Orange	Green	Green	Orange	Orange	Green	Yellow	Orange	Orange	Green	Yellow	Orange	Orange	Orange
	1300	1.09	763	Green	Green	Orange	Orange	White	Green	Orange	Orange	Green	Yellow	Orange	Orange	White	Green	Orange	Orange	Orange
Ditch Cleaning (DC)	2000	0.70	650	Blue	Blue	Orange	Orange	Yellow	Blue	Orange	Orange	Blue	Blue	Orange	Orange	Yellow	Blue	Orange	Orange	Orange
Ditch Cleaning Tilt (DCT)	1800	0.48	819	Blue	Orange	Orange	Orange	Blue	Orange	Orange	Orange	Orange	Orange	Orange	Blue	Orange	Orange	Orange	Orange	Orange
	2000	0.58	865	Blue	Blue	Orange	Orange	Yellow	Blue	Orange	Orange	Blue	Blue	Orange	Orange	Yellow	Blue	Orange	Orange	Orange
	2300	0.62	912	Yellow	Blue	Orange	Orange	Green	Blue	Orange	Orange	Yellow	Blue	Orange	Orange	Yellow	Blue	Orange	Orange	Orange

The above loads are in compliance with hydraulic excavator standard EN474, they do not exceed 87% of hydraulic lifting capacity or 75% of tipping capacity with front linkage fully extended at ground line with bucket curled.

Capacity based on ISO 7451.

Bucket weight with General Duty tips.

	Maximum material density 2100 kg/m ³
	Maximum material density 1800 kg/m ³
	Maximum material density 1500 kg/m ³
	Maximum material density 1200 kg/m ³
	Maximum material density 900 kg/m ³
	Not recommended

Caterpillar recommends using appropriate work tools to maximize the value customers receive from our products. Use of work tools, including buckets, which are outside of Caterpillar's recommendations or specifications for weight, dimensions, flows, pressures, etc. may result in less-than-optimal performance, including but not limited to reductions in production, stability, reliability, and component durability. Improper use of a work tool resulting in sweeping, prying, twisting and/or catching of heavy loads will reduce the life of the boom and stick.

M320D2 Wheeled Excavator Specifications

Bucket Specifications and Compatibility

Contact your Cat dealer for special bucket requirements.

With Pin Grabber Coupler				Variable Adjustable Boom 5260 mm								One-Piece Boom 5350 mm								
Stick Length				2500 mm				2800 mm				2500 mm				2800 mm				
	Width	Capacity	Weight	Free on wheels	Dozer lowered	1 set of stabilizers lowered	Fully stabilized	Free on wheels	Dozer lowered	1 set of stabilizers lowered	Fully stabilized	Free on wheels	Dozer lowered	1 set of stabilizers lowered	Fully stabilized	Free on wheels	Dozer lowered	1 set of stabilizers lowered	Fully stabilized	
	mm	m ³	kg																	
General Duty (GD)	600	0.41	474																	
	1200	1.00	695																	
	1300	1.09	724																	
	1400	1.18	756																	
Heavy Duty (HD)	1200	1.00	733																	
	1300	1.09	763																	
Ditch Cleaning (DC)	2000	0.70	650																	
Ditch Cleaning Tilt (DCT)	1800	0.48	819																	
	2000	0.58	865																	
	2300	0.62	912																	

The above loads are in compliance with hydraulic excavator standard EN474, they do not exceed 87% of hydraulic lifting capacity or 75% of tipping capacity with front linkage fully extended at ground line with bucket curled.

Capacity based on ISO 7451.

Bucket weight with General Duty tips.



Caterpillar recommends using appropriate work tools to maximize the value customers receive from our products. Use of work tools, including buckets, which are outside of Caterpillar's recommendations or specifications for weight, dimensions, flows, pressures, etc. may result in less-than-optimal performance, including but not limited to reductions in production, stability, reliability, and component durability. Improper use of a work tool resulting in sweeping, prying, twisting and/or catching of heavy loads will reduce the life of the boom and stick.

M320D2 Wheeled Excavator Specifications

Bucket Specifications and Compatibility





Contact your Cat dealer for special bucket requirements.

With Quick Coupler (CW-30/CW-30s)				Variable Adjustable Boom 5260 mm								One-Piece Boom 5350 mm							
Stick Length				2500 mm				2800 mm				2500 mm				2800 mm			
	Width	Capacity	Weight	Free on wheels	Dozer lowered	1 set of stabilizers lowered	Fully stabilized	Free on wheels	Dozer lowered	1 set of stabilizers lowered	Fully stabilized	Free on wheels	Dozer lowered	1 set of stabilizers lowered	Fully stabilized	Free on wheels	Dozer lowered	1 set of stabilizers lowered	Fully stabilized
	mm	m ³	kg																
General Duty (GD)	600	0.35	416	Orange	Orange	Orange	Orange	Orange	Orange	Orange	Orange	Orange	Orange	Orange	Orange	Orange	Orange	Orange	Orange
	1200	0.91	633	Green	Yellow	Orange	Orange	Green	Green	Orange	Orange	Green	Yellow	Green	Green	Green	Green	Orange	Orange
	1300	1.00	663	Green	Green	Orange	Orange	White	Green	Orange	Orange	Green	Green	Green	Green	White	Green	Orange	Orange
	1400	1.09	693	White	Green	Orange	Orange	White	White	Orange	Orange	White	Green	Green	Green	White	Green	Orange	Orange
Heavy Duty (HD)	1200	0.91	649	Green	Yellow	Orange	Orange	White	Green	Orange	Orange	Green	Yellow	Green	Green	Green	Green	Orange	Orange
	1300	1.00	681	Green	Green	Orange	Orange	White	Green	Orange	Orange	Green	Green	Green	Green	White	Green	Orange	Orange
	1400	1.09	712	White	Green	Orange	Orange	White	White	Orange	Orange	White	Green	Green	Green	White	Green	Orange	Orange

The above loads are in compliance with hydraulic excavator standard EN474, they do not exceed 87% of hydraulic lifting capacity or 75% of tipping capacity with front linkage fully extended at ground line with bucket curled.

Capacity based on ISO 7451.

Bucket weight with General Duty tips.

	Maximum material density 2100 kg/m ³
	Maximum material density 1200 kg/m ³
	Maximum material density 900 kg/m ³
	Not recommended

Caterpillar recommends using appropriate work tools to maximize the value customers receive from our products. Use of work tools, including buckets, which are outside of Caterpillar's recommendations or specifications for weight, dimensions, flows, pressures, etc. may result in less-than-optimal performance, including but not limited to reductions in production, stability, reliability, and component durability. Improper use of a work tool resulting in sweeping, prying, twisting and/or catching of heavy loads will reduce the life of the boom and stick.

M320D2 Wheeled Excavator Specifications

Work Tools Matching Guide

When choosing between various work tool models that can be installed onto the same machine configuration, consider work tool application, productivity requirements, and durability. Refer to work tool specifications for application recommendations and productivity information.


Boom Type		Variable Adjustable Boom 5260 mm				One-Piece Boom 5350 mm			
		4.0 mt Counterweight				4.0 mt Counterweight			
Undercarriage		(1)		(2)		(1)		(2)	
		Stick Length (mm)		2500	2800	2500	2800	2500	2800
Hydraulic Hammer	B20								
	H115Es								
	H120Es								
	H130Es								
Multi-Processor	MP318 CC Jaw								
	MP318 D Jaw								
	MP318 P Jaw								
	MP318 U Jaw								
	MP318 S Jaw								
Crusher	P315								
Pulverizer	P215								
Demolition and Sorting Grapple (D-Demolition shells, R-Recycling shells)	G315 GC								
	G315 GC fixed CAN								
	G315B-D/R								
	G315B-D/R fixed CAN								
Scrap and Demolition Shear	S320B								
	S325B								
Compactor Plate	CVP75								
Orange Peel Grapple (4 or 5 Tines)	GSH15B 400 L								
	GSH15B 500 L								
	GSH15B 600 L								
	GSH15B 800 L								
Clamshell Grapple	CTV15 1000 L								
	CTV15 1200 L								
	CTV15 1500 L								
	CTV15 1700 L								
Pin Grabber Coupler	CL-QC								
Dedicated Quick Coupler	CW-30								
	CW-30S								

These work tools are available for the M320D2.
Consult your Cat dealer for proper match.

(1) Dozer lowered


(2) Dozer and outrigger lowered


 Work Tool is a match

 Pin-on or dedicated coupler

 Pin-on only

 Over the front only

 Boom Mount

 Over the front only with dedicated coupler

Offerings not available in all areas. Matches are dependent on Wheeled Excavator configurations. Consult your Cat dealer to determine what is offered in your area and for proper work tool match.

fixed CAN: CW quick coupler adapter plates

M320D2 Wheeled Excavator Specifications

Lift Capacities – Variable Adjustable Boom

All values are in kg, bucket cylinder and bucket linkage installed, work tool: none, with counterweight (4000 kg), heavy lift on.

Medium Stick 2500 mm	Load at maximum reach (stick nose/bucket pin)	Load over front	Load over rear	Load over side	Load point height	Undercarriage configuration														
						3000 mm			4500 mm			6000 mm			7500 mm			mm		
						Load over front	Load over rear	Load over side	Load over front	Load over rear	Load over side	Load over front	Load over rear	Load over side	Load over front	Load over rear	Load over side	Load over front	Load over rear	Load over side
6000 mm	Rear dozer up					*6250	5850	5100	5100	3650	3200				*3300	3050	2650			
	Dozer and stabilizer down					*6250	*6250	*6250	*5550	5350				*3300	*3300	*3300				
	2 sets of stabilizers down					*6250	*6250	*6250	*5550	*5550				*3300	*3300	*3300				
4500 mm	Rear dozer up					*7250	5600	4850	5000	3550	3100				*3150	2450	2150			
	Dozer and stabilizer down					*7250	*7250	*7250	*6150	*6150	5250				*3150	*3150	*3150			
	2 sets of stabilizers down					*7250	*7250	*7250	*6150	*6150	6050				*3150	*3150	*3150			
3000 mm	Rear dozer up					7500	5150	4450	4800	3350	2950	3400	2350	2050	3200	2200	1900			
	Dozer and stabilizer down					*8800	*8800	7900	*6750	*6750	5050		5250	3600	*3200	*3200	*3200			
	2 sets of stabilizers down					*8800	*8800	*8800	*6750	*6750	5850	*5300	*5300	4150	*3200	*3200	*3200			
1500 mm	Rear dozer up					7000	4750	4050	4600	3200	2750	3350	2300	2000	3050	2100	1800			
	Dozer and stabilizer down					*10 000	*10 000	7400	*7300	7250	4850		5150	3500	*3350	*3350	3250			
	2 sets of stabilizers down					*10 000	*10 000	8800	*7300	*7300	5650	*5850	5250	4050	*3350	*3350	*3350			
0 mm	Rear dozer up					6800	4500	3850	4450	3050	2600	3250	2250	1900	3150	2150	1850			
	Dozer and stabilizer down					*10 250	*10 250	7150	*7450	7100	4700		5050	3450	*3750	*3750	3300			
	2 sets of stabilizers down					*10 250	*10 250	8550	*7450	7250	5500	*5700	5200	4000	*3750	*3750	*3750			
-1500 mm	Rear dozer up	*9500	8400	6900	6700	4450	3800	4400	3000	2550				3450	2400	2050				
	Dozer and stabilizer down		*9500	*9500	*9500	*9500	7100	*7000	*7000	4650					*4400	*4400	3650			
	2 sets of stabilizers down	*9500	*9500	*9500	*9500	*9500	8450	*7000	*7000	5450					*4400	*4400	4250			
-3000 mm	Rear dozer up					6800	4550	3850	4500	3050	2650				4300	2950	2550			
	Dozer and stabilizer down					*7700	*7700	7200	*5350	*5350	4700				*4900	*4900	4500			
	2 sets of stabilizers down					*7700	*7700	*7700	*5350	*5350	*5350				*4900	*4900	*4900			

*Limited by hydraulic rather than tipping load.













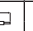




Lift capacity ratings are based on ISO 10567:2007, they do not exceed 87% of hydraulic lifting capacity or 75% of tipping load. The load point is the center line of the bucket pivot mounting pin on the stick. The oscillating axle must be locked. Lifting capacities are based on the machine standing on a firm uniform supporting surface and the Variable Boom Cylinder adjusted to the maximum length. For lifting capacity including bucket and/or quick coupler, the respective weight has to be subtracted from above values. The use of a work tool attachment point to handle/lift objects, could affect the machine lift performance.

Always refer to the appropriate Operation and Maintenance Manual for specific product information.

M320D2 Wheeled Excavator Specifications

Lift Capacities – Variable Adjustable Boom

All values are in kg, bucket cylinder and bucket linkage installed, work tool: none, with counterweight (4000 kg), heavy lift on.

Long Stick 2800 mm	 Load at maximum reach (stick nose/bucket pin)	 Load over front	 Load over rear	 Load over side	 Load point height	Undercarriage configuration												mm
						3000 mm			4500 mm			6000 mm			7500 mm			
																		
6000 mm	Rear dozer up Dozer and stabilizer down 2 sets of stabilizers down							5200	3700	3250				*2900	2800	2450	6980	
								*5200	*5200	*5200				*2900	*2900	*2900		
4500 mm	Rear dozer up Dozer and stabilizer down 2 sets of stabilizers down				*6650	5700	4950	5050	3600	3150	3500	2450	2150	*2800	2350	2050	7720	
					*6650	*6650	*6650	*5900	*5900	*5900	*3950	*3950	*3950	*2800	*2800	*2800		
3000 mm	Rear dozer up Dozer and stabilizer down 2 sets of stabilizers down				7600	5250	4500	4850	3400	2950	3450	2400	2100	*2800	2100	1800	8100	
					*8450	*8450	8000	*6550	*6550	5100	*5550	5400	4200	*2800	*2800	*2800		
1500 mm	Rear dozer up Dozer and stabilizer down 2 sets of stabilizers down				7100	4800	4100	4650	3200	2750	3350	2300	2000	2900	2000	1750	8190	
					*9800	*9800	7500	*7200	*7200	4900	*5800	5250	4050	*2950	*2950	*2950		
0 mm	Rear dozer up Dozer and stabilizer down 2 sets of stabilizers down				6800	4550	3850	4500	3050	2600	3250	2250	1950	3000	2050	1750	7990	
					*10 250	*10 250	7200	*7450	7250	4700	*5800	5200	4000	*3250	*3250	*3250		
-1500 mm	Rear dozer up Dozer and stabilizer down 2 sets of stabilizers down	*9050	8350	6800	6700	4450	3750	4400	3000	2550				3250	2250	1900	7480	
		*9050	*9050	*9050	*9700	*9700	7100	*7150	7050	4650				*3800	*3800	*3800		
-3000 mm	Rear dozer up Dozer and stabilizer down 2 sets of stabilizers down	*11 150	8500	6950	6750	4500	3800	4450	3000	2600				3950	2700	2300	6580	
		*11 150	*11 150	*11 150	*8200	*8200	7150	*5850	*5850	4700				*4850	*4850	*4850		

*Limited by hydraulic rather than tipping load.

Lift capacity ratings are based on ISO 10567:2007, they do not exceed 87% of hydraulic lifting capacity or 75% of tipping load. The load point is the center line of the bucket pivot mounting pin on the stick. The oscillating axle must be locked. Lifting capacities are based on the machine standing on a firm uniform supporting surface and the Variable Boom Cylinder adjusted to the maximum length. For lifting capacity including bucket and/or quick coupler, the respective weight has to be subtracted from above values. The use of a work tool attachment point to handle/lift objects, could affect the machine lift performance.

Always refer to the appropriate Operation and Maintenance Manual for specific product information.

M320D2 Wheeled Excavator Specifications

Lift Capacities – One-Piece Boom

All values are in kg, bucket cylinder and bucket linkage installed, work tool: none, with counterweight (4000 kg), heavy lift on.

Medium Stick 2500 mm	Load at maximum reach (stick nose/bucket pin)	Load over front	Load over rear	Load over side	Load point height												
					3000 mm			4500 mm			6000 mm			7500 mm			mm
					Stick nose	Bucket pin	Bucket tip	Stick nose	Bucket pin	Bucket tip	Stick nose	Bucket pin	Bucket tip	Stick nose	Bucket pin	Bucket tip	
6000 mm	Rear dozer up Dozer and stabilizer down 2 sets of stabilizers down							5050	3650	3200				*3450	3000	2650	6660
								*5550	*5550	5300				*3450	*3450	*3450	
								*5550	*5550	*5550				*3450	*3450	*3450	
4500 mm	Rear dozer up Dozer and stabilizer down 2 sets of stabilizers down							4950	3550	3100				*3350	2500	2150	7430
								*6000	*6000	5200				*3350	*3350	*3350	
								*6000	*6000	*6000				*3350	*3350	*3350	
3000 mm	Rear dozer up Dozer and stabilizer down 2 sets of stabilizers down				7400	5100	4400	4800	3350	2950	3400	2400	2100	3150	2200	1950	7840
					*8700	*8700	7800	*6650	*6650	5000		5200	3550	*3450	*3450	3350	
					*8700	*8700	*8700	*6650	*6650	5800	*5500	5300	4100	*3450	*3450	*3450	
1500 mm	Rear dozer up Dozer and stabilizer down 2 sets of stabilizers down				7000	4750	4050	4600	3200	2750	3300	2300	2000	3050	2100	1850	7930
					*10 000	*10 000	7350	7200	4800	4800		5100	3500	*3650	*3650	3200	
					*10 000	*10 000	8700	*7300	*7300	5600	*5850	5200	4050	*3650	*3650	*3650	
0 mm	Rear dozer up Dozer and stabilizer down 2 sets of stabilizers down				6750	4550	3850	4450	3050	2650	3250	2250	1950	3150	2150	1850	7720
					*10 350	*10 350	7150	7050	4700	4700		5050	3400	*4100	*4100	3300	
					*10 350	*10 350	8500	*7550	7200	5450	*5850	5150	3950	*4100	*4100	3800	
-1500 mm	Rear dozer up Dozer and stabilizer down 2 sets of stabilizers down	*9400	8450	6950	6700	4500	3800	4400	3000	2600				3450	2400	2050	7190
			*9400	*9400	*9750	*9750	7100	7000	4650	4650				*5000	*5000	3600	
		*9400	*9400	*9400	*9750	*9750	8450	*7200	7150	5400				*5000	*5000	4200	
-3000 mm	Rear dozer up Dozer and stabilizer down 2 sets of stabilizers down	*11 000	8650	7100	6800	4550	3900	4450	3050	2650				4250	2900	2550	6240
			*11 000	*11 000	*8200	*8200	7150	*5800	4700	4700				*5350	*5350	4450	
		*11 000	*11 000	*11 000	*8200	*8200	*8200	*5800	*5800	5500				*5350	*5350	5200	

*Limited by hydraulic rather than tipping load.

Lift capacity ratings are based on ISO 10567:2007, they do not exceed 87% of hydraulic lifting capacity or 75% of tipping load. The load point is the center line of the bucket pivot mounting pin on the stick. The oscillating axle must be locked. Lifting capacities are based on the machine standing on a firm uniform supporting surface. For lifting capacity including bucket and/or quick coupler, the respective weight has to be subtracted from above values. The use of a work tool attachment point to handle/lift objects, could affect the machine lift performance.

Always refer to the appropriate Operation and Maintenance Manual for specific product information.

M320D2 Wheeled Excavator Specifications

Lift Capacities – One-Piece Boom

All values are in kg, bucket cylinder and bucket linkage installed, work tool: none, with counterweight (4000 kg), heavy lift on.

Long Stick 2800 mm	Load at maximum reach (stick nose/bucket pin)	Load over front	Load over rear	Load over side	Load point height	Undercarriage configuration												mm			
						3000 mm			4500 mm			6000 mm			7500 mm						
						Load over front	Load over rear	Load over side	Load over front	Load over rear	Load over side	Load over front	Load over rear	Load over side	Load over front	Load over rear	Load over side				
6000 mm	Rear dozer up Dozer and stabilizer down 2 sets of stabilizers down								5150	3700	3250							*3050	2800	2500	7000
									*5200	*5200	*5200							*3050	*3050	*3050	
4500 mm	Rear dozer up Dozer and stabilizer down 2 sets of stabilizers down								5000	3600	3150	3500	2500	2150				*2950	2350	2050	7730
									*5750	*5750	*5750	*4050	*4050	*4050				*2950	*2950	*2950	
3000 mm	Rear dozer up Dozer and stabilizer down 2 sets of stabilizers down					7500	5200	4500	4800	3400	2950	3450	2400	2100				3000	2100	1850	8120
						*8350	*8350	7900	*6450	*6450	5050		5200	3600				*3000	*3000	*3000	
1500 mm	Rear dozer up Dozer and stabilizer down 2 sets of stabilizers down					7050	4800	4100	4600	3200	2800	3350	2300	2000				2900	2000	1750	8210
						*9800	*9800	7450	*7150	*7150	4850		5100	3500				*3200	*3200	*3200	
0 mm	Rear dozer up Dozer and stabilizer down 2 sets of stabilizers down					6800	4550	3900	4450	3050	2650	3250	2250	1950				3000	2050	1800	8010
						*10 350	*10 350	7150	*7500	7200	5500		5050	3450				*3600	*3600	*3600	
-1500 mm	Rear dozer up Dozer and stabilizer down 2 sets of stabilizers down	*9000	8400	6900	6700	4500	3800	4400	3000	2600								3250	2250	1950	7500
		*9000	*9000	*9000	*9950	*9950	7100		7000	4650								*4250	*4250	3400	
-3000 mm	Rear dozer up Dozer and stabilizer down 2 sets of stabilizers down	*11 850	8550	7050	6750	4500	3850	4450	3050	2600								3900	2700	2350	6600
		*11 850	*11 850	*11 850	*8600	*8600	7150		*6250	4650								*5250	*5250	4100	
-4500 mm	Rear dozer up Dozer and stabilizer down 2 sets of stabilizers down					*5650	4700	4050										*4600	4000	3450	5090
						*5650	*5650	*5650										*4600	*4600	*4600	

*Limited by hydraulic rather than tipping load.

Lift capacity ratings are based on ISO 10567:2007, they do not exceed 87% of hydraulic lifting capacity or 75% of tipping load. The load point is the center line of the bucket pivot mounting pin on the stick. The oscillating axle must be locked. Lifting capacities are based on the machine standing on a firm uniform supporting surface. For lifting capacity including bucket and/or quick coupler, the respective weight has to be subtracted from above values. The use of a work tool attachment point to handle/lift objects, could affect the machine lift performance.

Always refer to the appropriate Operation and Maintenance Manual for specific product information.

Standard Equipment

Standard equipment may vary. Consult your Cat dealer for details.

ELECTRICAL

- Alternator, 75 ampere
- Lights
 - Halogen working lights
 - Cab mounted: two front, one rear
 - Boom
 - Roading lights
 - Halogen front lights
 - LED rear lights
 - Halogen interior light
- Main shut-off switch
- Two Cat maintenance free heavy-duty batteries
- Signal/warning horn

ENGINE

- Cat C7.1 ACERT meets China III Nonroad emission standards and meets Tier 3/ Stage IIIA equivalent emission standards
- Automatic engine speed control, including one touch low idle
- Automatic starting aid
- Power mode selector (Eco and standard)
- Altitude capability: 3000 m
- Fuel/water separator with level indicator, fuel priming pump, water level switch and a visual restriction indicator

HYDRAULICS

- Cat XT-6 ES hoses
- Adjustable hydraulic sensitivity
- Oil cooler
- Anti-drift valve for bucket cylinder
- Hydraulic mineral oil, Cat HYDO™ Advanced 10 oil
- Heavy lift mode
- Load-sensing hydraulic system
- Separate swing pump
- Stick regeneration circuit

OPERATOR STATION

- Reinforced cab structure compliant with 2006/42/EC (tested according to ISO 12117-2:2008)*
- Washer bottle for wipers
- Interior lighting
- Joysticks, pilot operated
- Literature compartment behind the seat
- Mounting provisions for radio and speakers
- Adjustable armrests
- Air conditioner, heater and defroster with automatic climate control
- Ash tray with cigarette lighter (24 volt)
- Beverage cup/can holder
- Bolt-on guards capability
- Bottle holder
- Bottom mounted, intermittent, parallel wiping system that covers the upper and lower windshield glass
- Camera mounted on counterweight displays through cab monitor
- Coat hook
- Floor mat, washable, with storage compartment
- Instrument panel and gauges, with full color monitor display:
 - Information and warning messages in local language
 - Gauges for fuel level, engine coolant and hydraulic oil temperature
 - Filters/fluids change interval
 - Indicators for headlights, turning signal, low fuel, engine dial setting
 - Clock with 10-day backup battery
- Laminated front windshield
- Left side console, tiltable, with lock out for all controls
- Literature holder in right hand cab panel
- Mobile phone holder
- Parking brake
- Positive filtered ventilation, variable speed
- Power supply, 12V-7A
- Rear window, emergency exit
- Retractable seat belt, 51 mm
- Skylight
- Sliding door windows
- Steering column, tiltable
- Storage area suitable for a lunch box
- Sunshade for windshield and skylight
- Travel speed lock

*Not available in all markets. Available only for Africa, Middle East and Eurasia. Please contact your Cat dealer for details.

UNDERCARRIAGE

- Hydrostatic transmission, two speeds
- Creeper speed
- Full hydraulic steering with emergency capability
- Four wheel drive
- Two-piece drive shaft
- Heavy Duty axles, with advanced disc brake system and travel motor with adjustable breaking force
- Oscillating front axle, lockable, with remote greasing point
- Steps, wide, left and right
- Toolbox, left and right

OTHER EQUIPMENT

- Automatic swing brake
- Counterweight, 4000 kg
- Mirrors, frame and cab
- Cat Product Link
- Capability to add other auxiliary hydraulic circuits
- Caterpillar Datalink and Electronic Technician capability
- Door locks and cab locks with Caterpillar one-key security system
- S·O·S quick sampling valves for engine oil, hydraulic oil and coolant

M320D2 Optional Equipment

Optional Equipment

Optional equipment may vary. Consult your Cat dealer for details.

AUXILIARY CONTROLS AND LINES

- Auxiliary boom and stick lines
- Basic control circuits:
 - Medium pressure
 - Two-way, medium pressure circuit, for rotating or tilting of work tools
 - Tool control/multi function
 - One/two-way high pressure for hammer application or opening and closing of a work tool
 - Programmable flow and pressure for up to 10 work tools – selection via monitor
 - Quick coupler control
- Pattern changer

FRONT LINKAGE

- Booms
 - One-piece boom, 5350 mm
 - VA boom (two piece), 5260 mm
- Bucket linkage with diverter valve**
- Sticks
 - 2500, 2800 mm

HYDRAULICS

- Overload warning device**
- Boom and stick lowering control devices**

**Standard for Africa, Middle East and Eurasia

ELECTRICAL

- Travel alarm with or without three selectable modes
- Refueling pump
- Lights
 - Rotating beacon on cab

OPERATOR STATION

- Front and top guards
- CD/MP3 Radio (12V) at rear location including speakers and 12V converter
- Windshield
 - One piece
 - 70/30 split, openable, with visor for rain protection
- Seats
 - Vertical mechanical suspension with manual weight adjustment and mechanical lumbar support
 - Vertical air suspension, horizontal suspension, automatic weight adjustment, mechanical lumbar support, passive climate system, seat cushion length and angle adjustment and a seat heater
- Auxiliary high pressure pedal

UNDERCARRIAGE

- Undercarriages:
 - Blade front/outriggers rear
 - Outriggers front/blade rear
 - Outriggers front and rear*
 - Tires:
 - Pneumatic 10.00-20 dual
 - Solid rubber 10.00-20 dual*
 - Spacer rings for tires
 - Fenders*
- *Not available in all markets. Please contact your Cat dealer for details.

OTHER EQUIPMENT

- Cat Machine Security System (MSS)
- Uppercarriage access steps with integrated tool box
- Cab protecting guards, front and top

For more complete information on Cat products, dealer services, and industry solutions, visit us on the web at www.cat.com

© 2015 Caterpillar
All rights reserved

Materials and specifications are subject to change without notice. Featured machines in photos may include additional equipment. See your Cat dealer for available options.

CAT, CATERPILLAR, SAFETY.CAT.COM, their respective logos, "Caterpillar Yellow" and the "Power Edge" trade dress, as well as corporate and product identity used herein, are trademarks of Caterpillar and may not be used without permission.

VisionLink is a trademark of Trimble Navigation Limited, registered in the United States and in other countries.

AEHQ7398-02 (08-2015)
Replaces AEHQ7398-01
GCN1, AME, CIS,
APD, ADSD-S

