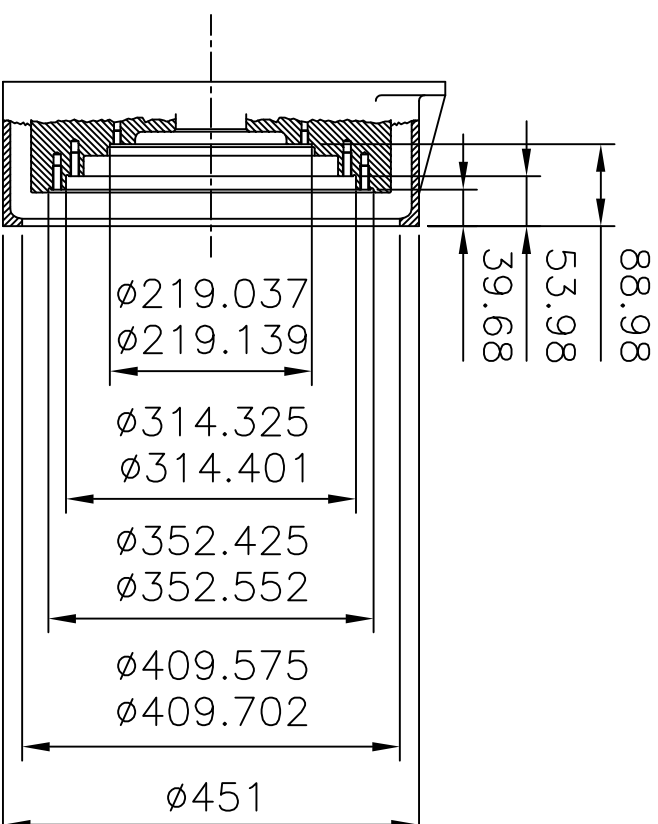


Hole Details

- A. 12 Holes M10 x 1.5 x 20
equispaced on ϕ 428.63 PCD.
- B. 8 Holes 3/8 x 24UNF x 25.4
equispaced on ϕ 333.38 PCD.
- C. 8 Holes 3/8 x 24UNF x 25.4
equispaced on ϕ 295.28 PCD.
- D. 8 Holes M8 x 1.25 x 14.3
equispaced on ϕ 203.20 PCD.



FLYWHEEL AND SAE No 3 HOUSING INTERFACE.

FLYWHEEL AND SAE No3
HOUSING INTERFACE.

Doc 7145-2-00 Sheet 2 of 2

CATERPILLAR MARINE POWER UK LTD
 Wimborne, Dorset, England.
 Tel. +44(0)1202 893720
 Fax. +44(0)1202 851700
 E-mail. Wimborne_MPC_post@cat.com
 www.Perkins-Sabre.com