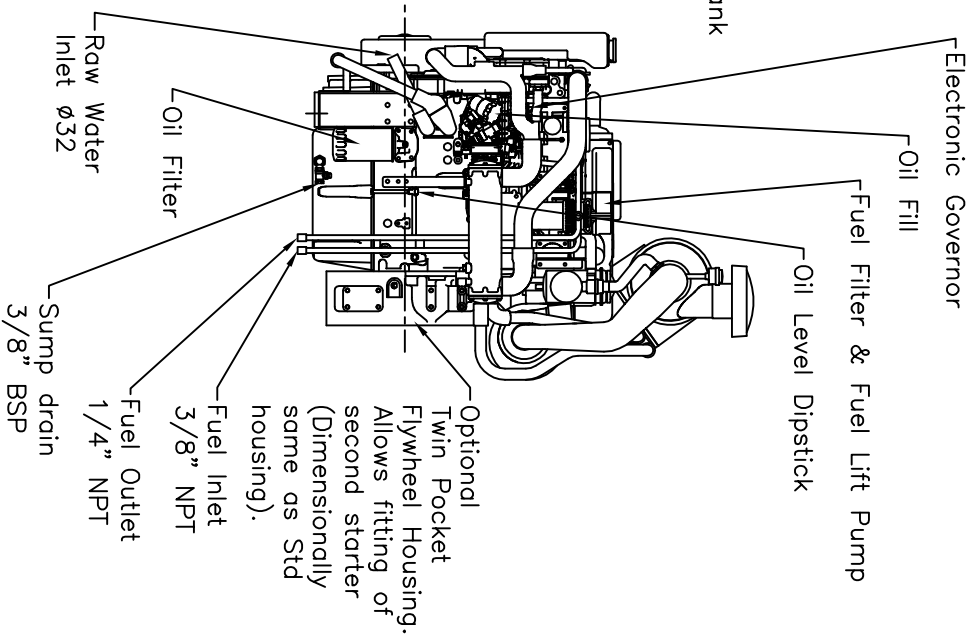
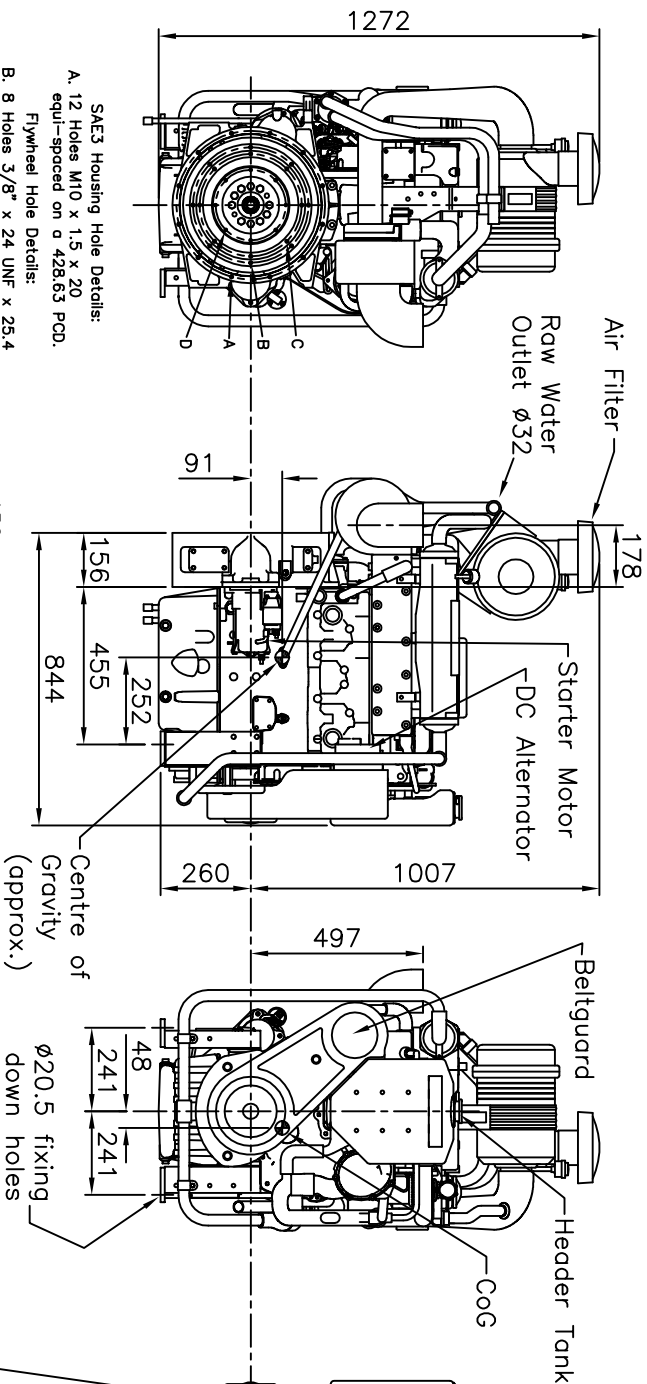
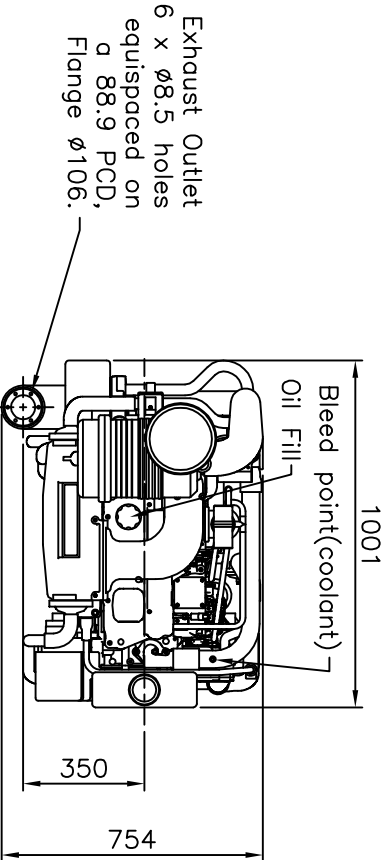


Perkins Sabre 4.4TW2GM Marine Diesel Engine
 For genset and constant speed applications.

CATERPILLAR MARINE POWER UK LTD
 Wimborne, Dorset, England.
 Tel. +44(0)1202 893720
 Fax. +44(0)1202 851700
 E-mail: Wimborne_MPC_post@cat.com
www.Perkins-Sabre.com

Total wet weight = 470 kg



- SAE3 Housing Hole Details:
 A. 12 Holes M10 x 1.5 x 20
 equi-spaced on a 428.63 PCD.
 Flywheel Hole Details:
 B. 8 Holes 3/8" x 24 UNF x 25.4
 equi-spaced on a 333.38 PCD.
 C. 8 Holes 3/8" x 24 UNF x 25.4
 equi-spaced on a 295.28 PCD.
 D. 8 Holes M8 x 1.25 x 14.3
 equi-spaced on a 203.20 PCD.

156	88.98
Ø219.037	53.98
Ø219.139	39.68
Ø314.325	
Ø314.401	
Ø352.425	
Ø352.552	
Ø409.575	
Ø409.702	
Ø451	

Rev 4 - CoG position and weight modified - JB - 22.08.11
 Rev 3 - CoG and wet weight added - JB - 9.06.09
 Rev 2 - Sump drain added - GM - 9.10.06

Section through SAE3 housing and flywheel

DOC 7410-3-09