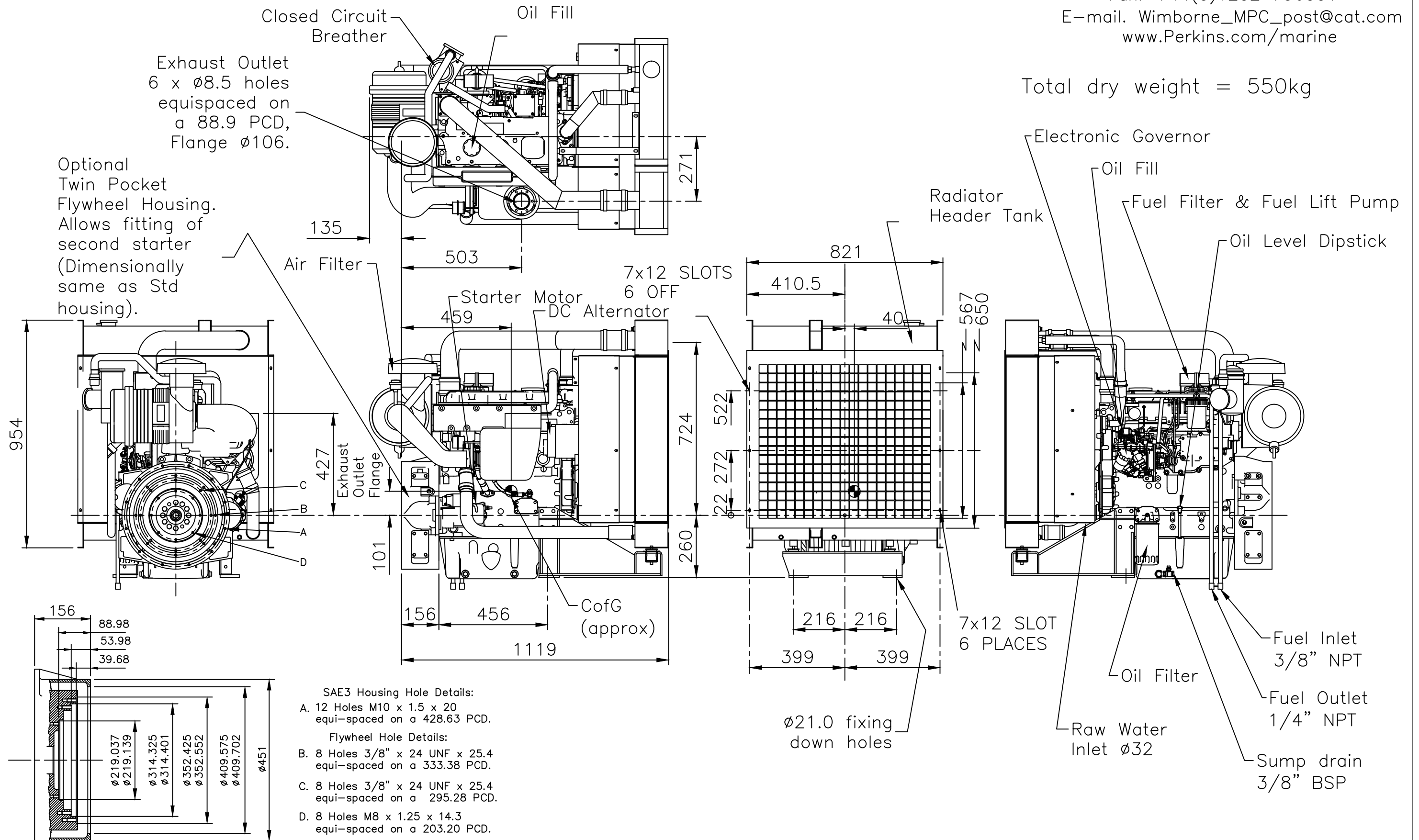


Perkins Sabre 4.4TW2GM Radiator Cooled Auxiliary Marine Diesel Engine

CATERPILLAR MARINE POWER UK LTD
 Wimborne, Dorset, England.
 Tel. +44(0)1202 796000
 Fax. +44(0)1202 796001
 E-mail. Wimborne_MPC_post@cat.com
 www.Perkins.com/marine



Total dry weight = 550kg

- SAE3 Housing Hole Details:
- A. 12 Holes M10 x 1.5 x 20 equi-spaced on a 428.63 PCD.
 - B. 8 Holes 3/8" x 24 UNF x 25.4 equi-spaced on a 333.38 PCD.
 - C. 8 Holes 3/8" x 24 UNF x 25.4 equi-spaced on a 295.28 PCD.
 - D. 8 Holes M8 x 1.25 x 14.3 equi-spaced on a 203.20 PCD.
- Flywheel Hole Details:
- B. 8 Holes 3/8" x 24 UNF x 25.4 equi-spaced on a 333.38 PCD.
 - C. 8 Holes 3/8" x 24 UNF x 25.4 equi-spaced on a 295.28 PCD.
 - D. 8 Holes M8 x 1.25 x 14.3 equi-spaced on a 203.20 PCD.

Section through SAE3 housing and flywheel - scale 2:3
 Rev 4 - Center of Gravity added - JB - 25.8.11
 Rev 3 - Exhaust height added, oil fill clarified, SAE3 section was 1:1 - GM - 20.3.07
 Rev 2 - Sump drain added - GM - 9.10.06

Rev 5 - Increase in RAD height - CSM - 03.04.14

Doc 7478-3-07