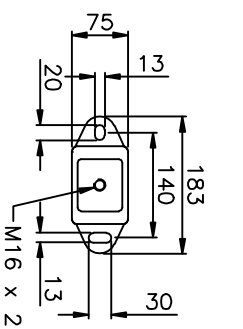
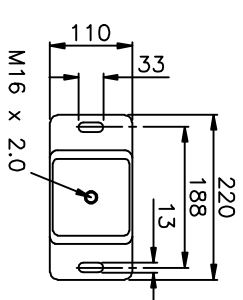
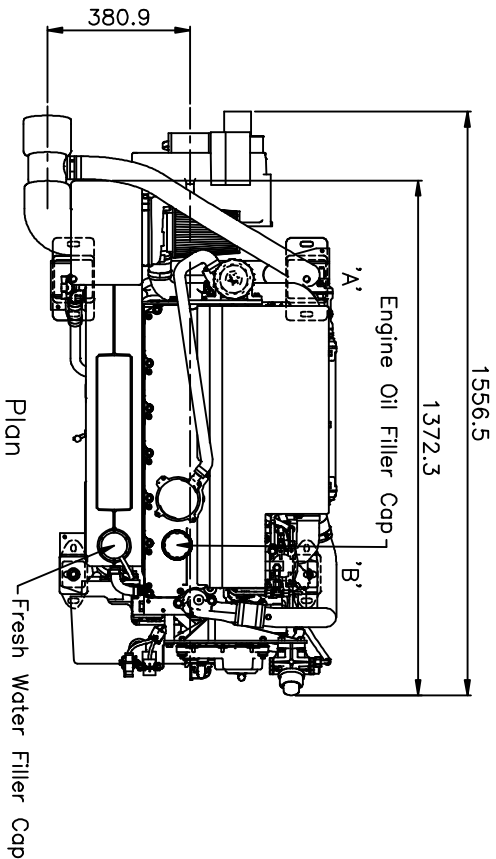


Perkins M216C & M190C Marine Diesel Engine
 Shown with ZF280-1A gearbox with reduction ratios up to
 and including 2.476:1 ratios (622 mm transverse mounting centres)

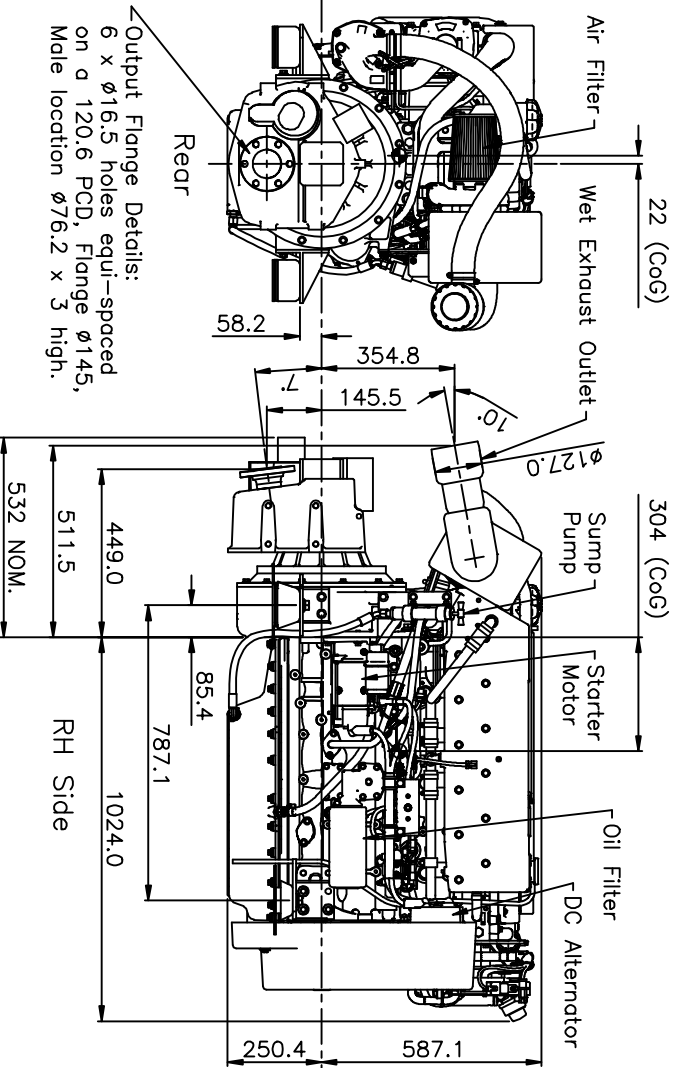
WIMBORNE MARINE POWER CENTRE
 Wimborne, Dorset, England.
 Tel. +44(0)1202 893720
 Fax. +44(0)1202 851700
 E-mail. Wimborne_MPC_post@cat.com
 www.Perkins-Sabre.com

Total Dry Weight: 775kg



FLEXIBLE ENGINE MOUNT 'A'

FLEXIBLE ENGINE MOUNT 'B'



Output Flange Details:
 6 x ϕ 16.5 holes equi-spaced
 on a 120.6 PCD, Flange ϕ 145,
 Male location ϕ 76.2 x 3 high.

