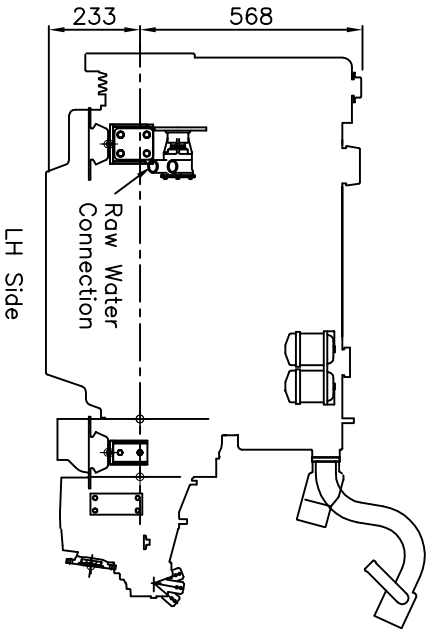
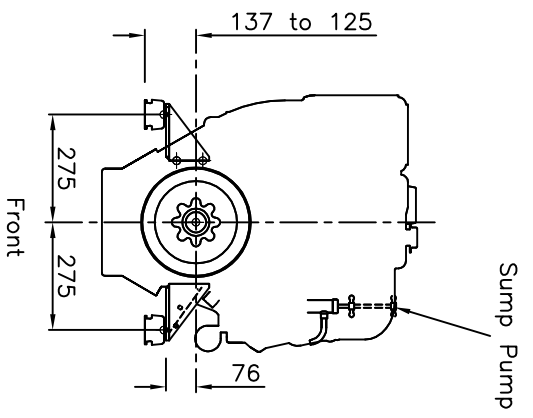
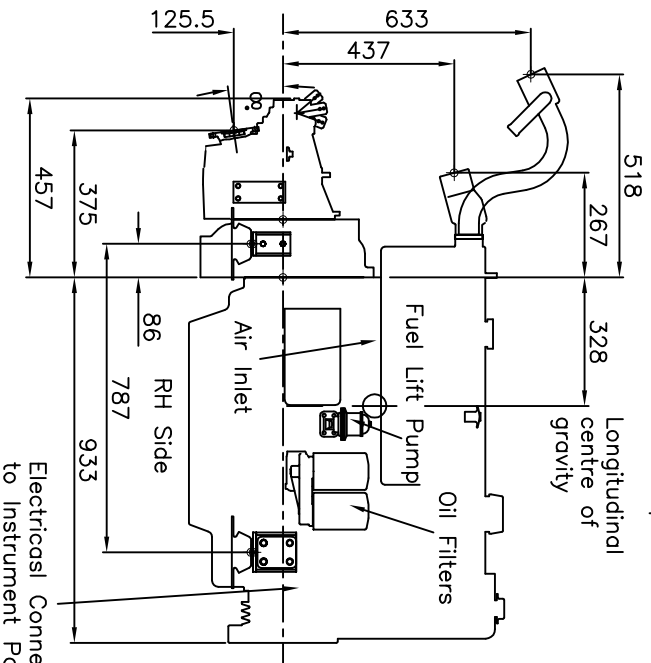
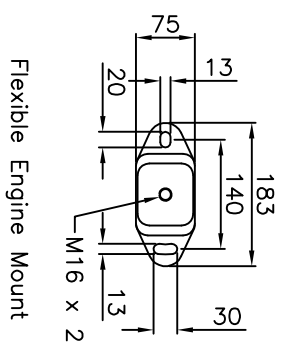
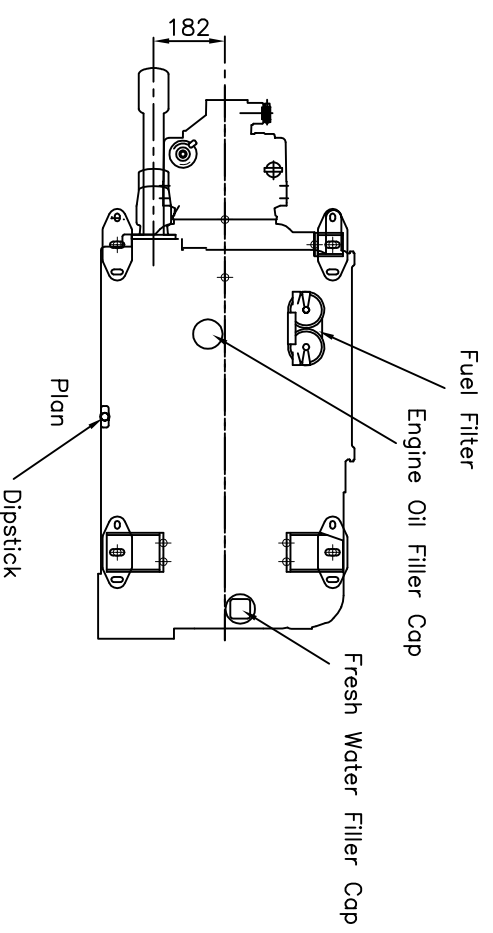


Perkins Sabre M130C and M135 Marine Diesel Engine shown with the Hurth HSW 450A gearbox (Ratios up to and including 2:1) (550mm transverse mounting centres)

CATERPILLAR MARINE POWER UK LTD  
 Wimborne, Dorset, England.  
 Tel. +44(0)1202 893720  
 Fax. +44(0)1202 851700  
 E-mail. Wimborne\_MPC\_post@cat.com  
 www.Perkins-Sabre.com



Gearbox output flange 127.0 OD, 4 holes  $\phi$ 11.5 equispaced on a 108 PCD Female location  $\phi$ 63.5 H8

