

336F L

Hydraulic Excavator



Engine

Engine Model	Cat® C9.3 (ATAAC)	
Net Power – SAE J1349	226 kW	303 hp

Drive

Maximum Travel Speed	4.8 km/h	3 mph
Maximum Drawbar Pull	294 kN	66,139 lbf

Weight

Minimum Weight	36 500 kg	80,500 lb
Maximum Weight	40 100 kg	88,400 lb

Introduction

The 336F is built to keep your production numbers up and your owning and operating costs down. Not only does the machine's C9.3 engine meet U.S. EPA Tier 4 Final emission standards, but it does so while giving you all the power, fuel efficiency, and reliability you need to succeed.

Where the real power comes in is through the hydraulic system. You can literally move tons of material all day long with a great deal of speed and precision. When you add in a quiet operator environment that keeps you comfortable and productive, ground-level service points that make your routine maintenance easy, and multiple Cat work tools that help you take on a variety of jobs, you simply won't find a better 36-ton machine.

If productivity, comfort, versatility, and fuel efficiency are what you want, the 336F excavator is what you need.

Contents

Hydraulics	3
Operator Station.....	4
Engine	6
Structures & Undercarriage	8
Front Linkage	9
Attachments.....	10
Integrated Technologies.....	12
Serviceability	13
Safety	14
Complete Customer Care.....	15
Sustainability	16
Specifications.....	17
Standard Equipment.....	33
Optional Equipment.....	34
Notes.....	35





A Powerful, Efficient Design

When it comes to moving heavy material quickly and efficiently, you need hydraulic horsepower – the type of ground-breaking power the 336F can deliver. Major hydraulic components like pumps and valves are located close together so shorter tubes and lines can be used. This design leads to less friction loss, reduced pressure drops, and more power to the ground for the work you need to get done.

Hydraulics

Power to move your material with speed and precision

Control Like No Other

Controllability is one of the main attributes of Cat excavators, and one of the key contributors to this is the main control valve. The valve opens slowly when your range of joystick lever movement is small and opens rapidly when movement is high. It puts flow where you need it when you need it, which leads to smoother operation, greater efficiency, and lower fuel consumption.

Auxiliary Hydraulics For Added Versatility

Auxiliary hydraulics give you greater tool versatility so you can take on more work with just one machine, and there are several options from which you can choose. A quick coupler circuit, for example, will allow you to switch from one tool to another in a matter of minutes – all from the comfort and convenience of the cab.



Boom & Stick Oil Re-Circulation For Added Efficiency

The 336F regenerates the flow of oil from the head end of the boom and stick cylinders to the rod end of the boom and stick cylinders during the work cycle to save energy and improve fuel efficiency. It's optimized for any dial speed setting you select, which results in less pressure loss for higher controllability, more productivity, and lower operating costs for you.

Operator Station

Comfort and convenience to keep you productive





A Helpful Monitor

The LCD monitor is easy to see and navigate. Programmable in up to 42 languages to meet today's diverse workforce, the monitor clearly displays critical information you need to operate efficiently and effectively. Plus it projects the image from the standard rearview camera to help you see what's going on around you so you can stay safely focused on the job at hand.

A Safe, Quiet Cab

The ROPS cab provides you with a safe working environment. It also contributes to your comfort because it's attached to a reinforced frame with special viscous mounts that limit vibration and unnecessary sound. Add in special roof lining and sealing and you have a cab that's as quiet inside as any of today's top pickup trucks.

Comfortable Seat Options

The seat range includes air suspension, heated, and air cooled options. All seats include a reclining back, upper and lower slide adjustments, and height and tilt angle adjustments to meet your needs for maximum comfort.

A Cool & Warm Environment

The automatic climate control system features multiple air outlets with filtered ventilation. Air flows on the floor, behind the seat, and in front of you to make your work in either hot or cold weather much more pleasant and productive.

Controls Just For You

The right and left joystick consoles can be adjusted to improve your comfort and productivity during the course of a day. Also, the right joystick features a button that will reduce engine speed when you are not working to help save fuel. Touch it once and speed reduces; touch it again and speed increases for normal operation.

Ample Storage & Auxiliary Power

Storage spaces are located in the front, rear, and side consoles of the cab. A drink holder accommodates a large mug with handle, and a shelf behind the seat stores large lunch or toolboxes. Two 12-volt power supply sockets are conveniently located near the key storage areas for charging your electronic devices like an MP3 player, a cell phone, or a tablet.

Engine

Powerful and fuel efficient to meet your expectations



Proven Technology

Every U.S. EPA Tier 4 Final ACERT™ engine is equipped with a combination of proven electronic, fuel, air, and aftertreatment components. Applying these time-tested technologies lets us meet your high expectations for productivity, fuel efficiency, reliability, and service life. Following are the results you can expect:

- **Improved fluid efficiency of up to 5%** over Tier 4 Interim products, including Diesel Exhaust Fluid (DEF) consumption.
- **High performance** across a variety of applications.
- **Enhanced reliability** through commonality and simplicity of design.
- **Maximized uptime and reduced cost** with world-class Cat dealer support.
- **Minimized impact** on emission systems – with no operator interaction required.
- **Durability** with long service life.
- **Better fuel economy** with minimized maintenance costs.
- **Same great power** and response.

More Powerful, Reliable Engine Electronics

The electronics used in Cat Tier 4 Final engines are more powerful and robust than ever. Enhanced features like an over-foam wiring harness improve your experience and increase quality and reliability through the most demanding applications.

Next Generation Fuel Systems

As a key component of Cat Tier 4 Technology, injection timing precisely controls the fuel injection process through a series of carefully timed microbursts. This injection timing provides more control of combustion for the cleanest, most efficient fuel burn. To maximize your value, Caterpillar engineers specified fuel systems based on the power and performance demands for each engine. The high-pressure common rail fuel system with full electronic injection improves precision and control, reducing soot and boosting the engine's performance.

Innovative Air Management

Cat Tier 4 Final engines feature innovative air management systems that optimize airflow and enhance power, efficiency, and reliability. We apply a range of simple, reliable turbocharging solutions based on engine size and application. This allows us to match turbo performance to rated output for high productivity, excellent fuel efficiency, long life, and low operating costs for you.

Cat NO_x Reduction System

The Cat NO_x Reduction System captures and cools a small quantity of exhaust gas, then routes it back into the combustion chamber where it drives down combustion temperatures and reduces NO_x emissions. The result of more than a decade of Caterpillar engineering research into this technology is the most reliable system of its type.

Aftertreatment Technologies

Caterpillar designed Tier 4 Interim products with Tier 4 Final standards in mind. By planning ahead, we were able to minimize design changes and deliver the reliability and performance you demand. The aftertreatment solution utilized for Tier 4 Final products is the next evolutionary step for Cat engines with ACERT Technology. To meet the additional 80% reduction in NO_x emissions required by U.S. EPA Tier 4 Final emission standards, Caterpillar engineers only needed to add one new system to the already proven aftertreatment solution in use, Selective Catalytic Reduction (SCR).

Diesel Exhaust Fluid (DEF)

Cat engines equipped with an SCR system inject DEF into the exhaust to reduce NO_x emissions. DEF is a precisely mixed solution of 32.5% high purity chemical grade urea and 67.5% de-ionized water. DEF used in Cat SCR systems must meet the requirements outlined in the International Organization for Standardization (ISO) standard 22241-1. ISO 22241-1 requirements are met by many brands of DEF, including those that carry the AdBlue or API certifications.

An Emissions Solution That Really Works

The Cat C9.3 engine meets today's U.S. EPA Tier 4 Final emission standards, and it does so without interrupting your job process. Simply turn the engine on and go to work. It will look for opportunities in your work cycle to regenerate itself, and it will give you plenty of power for the task at hand – all to help keep your owning and operating costs to an absolute minimum.

Fuel Savers That Add Up

The 336F consumes less fuel than the previous series model, and the automatic engine speed control contributes by lowering rpm when the machine doesn't need it for work. You also have a choice of three power modes – high power, standard power, and eco mode. Simply change between modes through the console switch panel to meet the work needs in front of you. Collectively, all of these benefits add up to reduced fuel consumption, reduced exhaust and sound emissions, reduced repair and maintenance costs, and increased engine life for you.

A Cool Design For Any Temperature

The 336F features a side-by-side cooling system that allows you to put the machine to work in extremely hot and cold conditions. The system is completely separated from the engine compartment to reduce noise and heat. Plus it features easy-to-clean cores and an efficient variable-speed fan.

Biodiesel Not A Problem

The C9.3 engine can run on B20 biodiesel fuel that meets ASTM 6751 standards – all to give you more potential fuel-saving flexibility.



Structures & Undercarriage

Built to work in your tough, heavy-duty applications

Robust Frames

The 336F is a well-built machine designed to give you a very long service life. The upper frame has mountings made specifically to support the heavy-duty cab; it's also reinforced around areas that take on a lot of stress like the boom foot and skirt. Massive bolts are used to attach the track frames to the body, and additional bolts are used to increase the machine's digging force, which leads to more productivity for you.

Durable Undercarriage

The 336F's undercarriage contributes significantly to its outstanding stability and durability. Track shoes, links, rollers, idlers, and final drives are all built with long-lasting, high-tensile-strength steel. Cat Grease Lubricated Track 2 (GLT2) track link protects moving parts by keeping water, debris, and dust out and grease sealed in, which delivers longer wear life and reduced noise when traveling. Optional guide guards help maintain track alignment to improve the machine's overall performance – whether you're traveling on a flat, heavy bed of rock or a steep, wet field of mud.

Counterweight Options

6.0 mt (6.6 t) and 7.0 mt (7.7 t) counterweights are available, with the heavier weight matched to a unique extreme service configuration that is designed to give you more lift. Both weights are built with thick steel plates and reinforced fabrications to make them less susceptible to damage, and both have curved surfaces that match the machine's sleek, smooth appearance along with integrated housings to help protect the standard rearview camera.



Front Linkage

Options to take on your far-reaching or up-close tasks

Booms & Sticks

The 336F is offered with a range of booms and sticks. Each is built with internal baffle plates and stress-relieved for added durability, and each undergoes ultrasound inspection to ensure quality and reliability. Large box-section structures with thick, multi-plate fabrications, castings, and forgings are used in high-stress areas such as the boom nose, boom foot, boom cylinder, and stick foot to improve durability. Also, the boom nose pin retention method is a captured flag design for enhanced durability.

Three Types Available

Three types of booms and sticks are offered: heavy-duty (HD) reach, extreme service (ES) reach, and mass excavation (ME).

HD reach booms and sticks offer you excellent all-around versatility for general excavation work like multipurpose digging and loading. ES booms and sticks are built for tougher work like breaking rock and lifting heavy material where stress loads on the boom are increased. In fact, the ES boom has a new nose that is considerably lighter and just as durable as the previous series' design to improve lift performance. ME booms and sticks offer you enhanced performance in heavy-duty material. They provide higher digging forces due to special boom and stick geometry, and bucket linkage and cylinders are built for greater durability.

Sticks are matched to the boom.

Longer sticks are better for when you need to dig deep or load trucks. Shorter sticks provide greater breakout force and increase your productivity when using hydromechanical work tools.

Talk to your Cat dealer to pick the best front linkage for your applications.

Attachments

Tools to make you productive and profitable



Get The Most Out Of One Machine

You can easily expand the performance of your machine by utilizing any of the variety of attachments offered by Cat Work Tools.

Change Jobs Quickly

A quick coupler brings the ability to quickly change attachments and switch from job to job. The Cat Pin Grabber coupler is the secure way to decrease downtime and increase job site flexibility and overall productivity.

Dig, Finish, Load & Compact

A wide range of buckets dig everything from top soil to harsh, abrasive material. For finishing and grading work, compact and shallow ditch cleaning buckets fit the need. A Cat compactor prepares the area for the next phase of construction.

Mining, Demolition & Scrap

A hydraulic hammer equips your machine for breaking rock in quarries and preparing trenches on construction sites. Taking down bridge pillars and heavily reinforced concrete is no problem. Multi-processor, pulverizer, and shear attachments take your machine into structure demolition jobs and process the debris for reuse and recycle.

Move & Handle

Add a thumb and you have the ability to move and handle brush, rocks, and debris. For constant material handling, a grapple is your solution. Choose from three different styles for picking, sorting, and loading trash, demolition debris, or recyclables.

Set Up Your Machine For Profitability

Your Cat dealer can install hydraulic kits to properly operate all Cat Work Tool attachments – maximizing the machine's uptime and your profits. All Cat Work Tool attachments are supported by the same Cat dealer network as your Cat machine.

GRAB, SORT, LOAD



Pro Series Hydraulic Thumbs



Stiff Link Thumbs



Demolition & Sorting Grapple



Contractors' Grapples



Trash Grapples

SWAP TOOLS



Pin Grabber Coupler

DIG & PACK



Ditch Cleaning and Tilt Buckets



General Duty Buckets



Heavy Duty Buckets



Severe Duty Buckets



Extreme Duty Buckets



Vibratory Plate Compactors

CUT, CRUSH, BREAK & RIP



Multi-Processors



Scrap & Demolition Shears



Secondary Pulverizers



Hydraulic Hammers



Rippers

Integrated Technologies

Monitor, manage, and enhance your job site operations



CAT CONNECT



EQUIPMENT MANAGEMENT



PRODUCTIVITY



SAFETY



SUSTAINABILITY

Cat Connect makes smart use of technology and services to improve your job site efficiency. Using the data from technology-equipped machines, you'll get more information and insight into your equipment and operations than ever before.

Cat Connect technologies offer improvements in these key areas:



EQUIPMENT MANAGEMENT

Equipment Management – increase uptime and reduce operating costs.



PRODUCTIVITY

Productivity – monitor production and manage job site efficiency.



SAFETY

Safety – enhance job site awareness to keep your people and equipment safe.

LINK Technologies

LINK technologies like Product Link™ wirelessly connect you to your equipment, giving you valuable insight into how your machine or fleet is performing. The system tracks location, hours, fuel usage, productivity, idle time, and diagnostic codes through the online VisionLink® interface so you can make timely, fact-based decisions to maximize efficiency, improve productivity, and lower operating costs.

GRADE Technologies

GRADE technologies like Cat Grade Control Depth and Slope combine digital design data and in-cab guidance to help you work more productively and accurately with less rework. Real-time bucket tip positioning and cut and fill data on the standard cab monitor guide you to grade, saving money on fuel and materials. Easily upgrade to AccuGrade™ when 3D control is required.

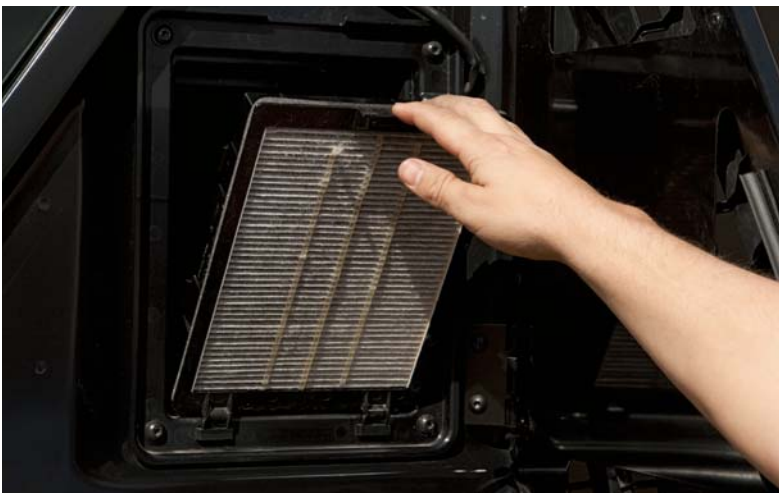


Ground-Level Access

You can reach most routine maintenance items like fuel and oil filters, fluid taps, and grease points from the safety and convenience of ground level. Not only do compartments feature wide service doors designed to help prevent debris entry, but they also securely latch in place to help make your service work simpler.

Serviceability

Designed to make your maintenance quick and easy



A Cool Design

The high-ambient cooling system features a fuel-saving variable-speed fan and a side-by-side-mounted radiator and oil and air coolers for easy cleaning. Wider clearance between the two make blowing off debris easy for you, which can help improve your machine's reliability and performance.

A Fresh Idea

When you select ventilation inside the cab, outside air enters through the fresh air filter. The filter is conveniently located on the side of the cab to make it easy to reach and replace, and it is protected by a lockable door that can be opened with the engine key.

Other Service Benefits

The fuel tank's drain cock makes it easy and simple for you to remove water and sediment during routine maintenance. Plus an integrated fuel level indicator pops up to help you reduce the possibility of fuel tank overfilling.

Safety

Features to help protect you day in and day out

A Safe, Quiet Cab

The ROPS cab provides you with a safe working environment. It also contributes to your comfort because it's attached to a reinforced frame with special viscous mounts that limit vibration and unnecessary sound. Add in special roof lining and sealing and you have a cab that's as quiet inside as any of today's top pickup trucks.

Secure Contact Points

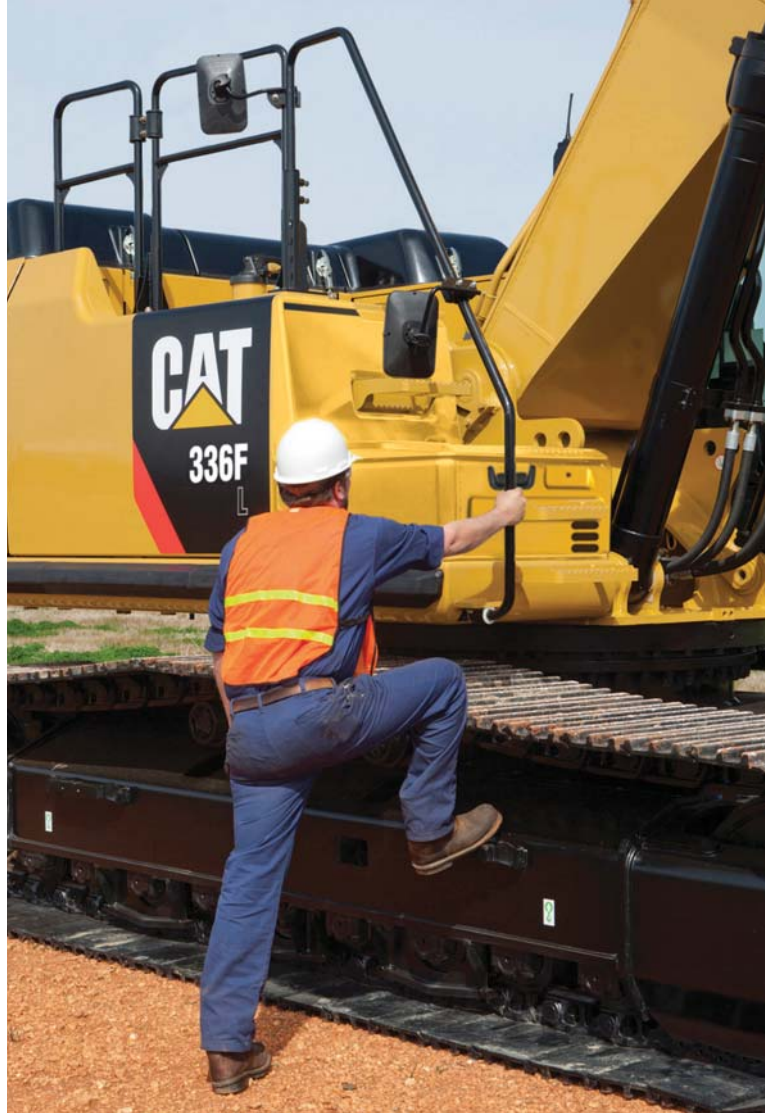
Multiple large steps get you into the cab as well as a leg up to the compartments. Extended hand and guard rails allow you to safely climb to the upper deck. Anti-skid plates reduce your slipping hazards in all types of weather conditions, and they can be removed for cleaning.

Great Views

Ample glass gives you excellent visibility out front and to the side, and the standard rearview camera gives you a clear field of view behind the machine through the cab monitor. The available split-configuration windshield features an upper window with handles that make it easy to slide and store above you and a lower window that can be removed and stored on the inside wall of the cab. The large skylight also serves as an emergency exit and provides you with enhanced overhead visibility.

Smart Lighting

Halogen lights provide plenty of illumination, and the cab and boom lights can be programmed to stay on for up to 90 seconds after the engine has been turned off to help you safely exit the machine. Optional High Intensity Discharge (HID) lights are available for enhanced night-time visibility.





Complete Customer Care

Support you can count on

Worldwide Parts Availability

Cat dealers utilize a worldwide parts network to maximize your machines' uptime. Plus they can help you save money with Cat remanufactured components.

Advice You Can Trust

What are the job requirements and machine attachments? What production is needed? Your Cat dealer can provide recommendations to help you make the right machine choices.

Financial Options Just For You

Consider financing options and day-to-day operating costs. Look at dealer services that can be included in the machine's cost to yield lower owning and operating costs over time.

Support Agreements To Fit Your Needs

Cat dealers offer a variety of customer support agreements and work with you to develop a plan to meet your specific needs. These plans can cover the entire machine, including attachments, to help protect your investment.

Operating Techniques To Boost Your Profits

Improving operating techniques can boost your profits. Your Cat dealer has videos, literature, and other ideas to help you increase productivity. Caterpillar also offers simulators and certified operator training to help maximize the return on your investment.

What's Best For You Today... And Tomorrow

Repair, rebuild, or replace? Your Cat dealer can help you evaluate the cost involved so you can make the best choice for your business.

Sustainability

Generations ahead in every way



- The C9.3 ACERT engine meets U.S. EPA Tier 4 Final emission standards.
- The 336F consumes 5% less fluid than 336E, which means more efficiency and less CO₂ emissions.
- The engine has the flexibility of running on either ultra-low-sulfur diesel (ULSD) fuel with 15 ppm of sulfur or less or biodiesel (B20) fuel blended with ULSD.
- An overfill indicator rises when the tank is full to help the operator avoid spilling.
- Quick fill ports with connectors ensure fast, easy, and secure changing of engine and hydraulic oil.
- The machine is built to be rebuilt with major structures and components remanufactured to reduce waste and replacement costs.
- The 336F is an efficient, productive machine that's designed to conserve our natural resources for generations ahead.



336F L Hydraulic Excavator Specifications

Engine

Engine Model	Cat C9.3 (ATAAC)	
Net Power – SAE J1349	226 kW	303 hp
Gross Power – SAE J1995	240 kW	322 hp
Bore	115 mm	4.53 in
Stroke	149 mm	5.87 in
Displacement	9.3 L	568 in ³

Weights

Minimum Weight*	36 500 kg	80,500 lb
Maximum Weight**	40 100 kg	88,400 lb

*HD Reach boom, R3.2DB (10'6") stick, 2.28 m³ (2.98 yd³)
GP bucket, 700 mm (28") TG shoes.

**Mass boom, M2.55TB (8'4") stick, 2.41 m³ (3.15 yd³)
SD bucket, 850 mm (34") TG shoes.

Hydraulic System

Main System – Maximum Flow (Total)	570 L/min	151 gal/min
Swing System – Maximum Flow	279 L/min	74 gal/min
Maximum Pressure – Equipment		
Heavy Lift	38 000 kPa	5,511 psi
Normal	35 000 kPa	5,076 psi
Maximum Pressure – Travel	35 000 kPa	5,076 psi
Maximum Pressure – Swing	28 000 kPa	4,061 psi
Pilot System – Maximum Flow	29 L/min	8 gal/min
Pilot System – Maximum Pressure	4100 kPa	595 psi
Boom Cylinder – Bore	150 mm	5.9 in
Boom Cylinder – Stroke	1440 mm	56.7 in
Stick Cylinder – Bore	170 mm	6.7 in
Stick Cylinder – Stroke	1738 mm	68.4 in
DB Family Bucket Cylinder – Bore	150 mm	5.9 in
DB Family Bucket Cylinder – Stroke	1151 mm	45.3 in
TB Family Bucket Cylinder – Bore	160 mm	6.3 in
TB Family Bucket Cylinder – Stroke	1356 mm	53.4 in

Drive

Maximum Travel Speed	4.8 km/h	3 mph
Maximum Drawbar Pull	294 kN	66,139 lbf

Swing Mechanism

Swing Speed	8.9 rpm	
Swing Torque	109 kN·m	80,144 lbf-ft

Service Refill Capacities

Fuel Tank Capacity	620 L	164 gal
Cooling System	56 L	15 gal
Engine Oil (with filter)	31 L	8 gal
Swing Drive (each)	19 L	5 gal
Final Drive (each)	8 L	2 gal
Hydraulic System (including tank)	380 L	100 gal
Hydraulic Tank	175 L	46 gal
DEF Tank	41 L	11 gal

Track

Number of Shoes (each side)	
Long Undercarriage	49
Number of Track Rollers (each side)	
Long Undercarriage	9
Number of Carrier Rollers (each side)	
Long Undercarriage	2

Sound Performance

Operator Noise SAE J1166 71 dB(A)

- When properly installed and maintained, the cab offered by Caterpillar, when tested with doors and windows closed according to ANSI/SAE J1166, meets OSHA and MSHA requirements for operator sound exposure limits in effect at time of manufacture.
- Hearing protection may be needed when operating with an open operator station and cab (when not properly maintained or doors/windows open) for extended periods or in noisy environment.

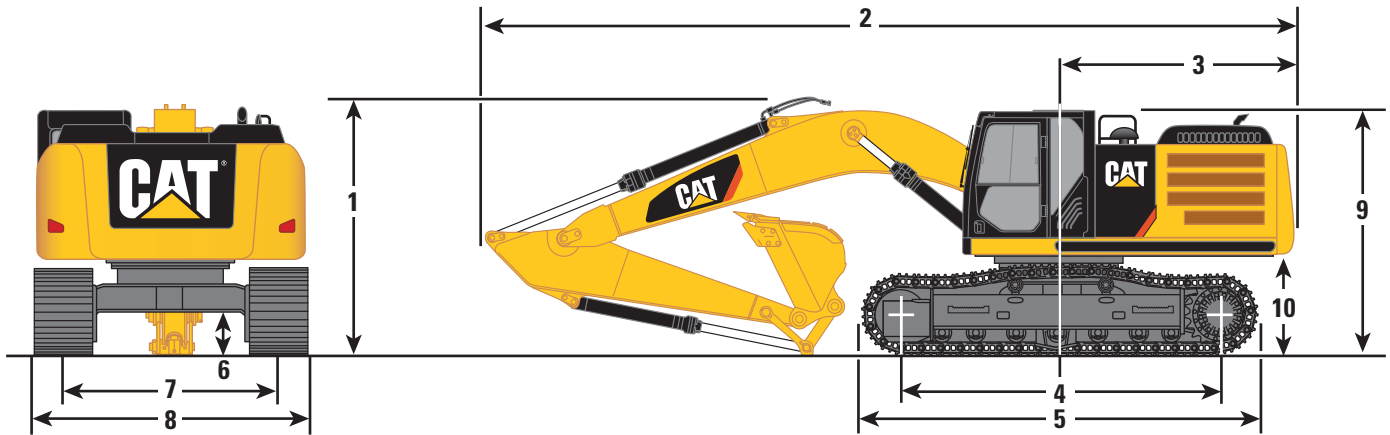
Standards

Brakes	ISO 10265 2008
Cab/FOGS	ISO 10262 1998

336F L Hydraulic Excavator Specifications

Dimensions

All dimensions are approximate.

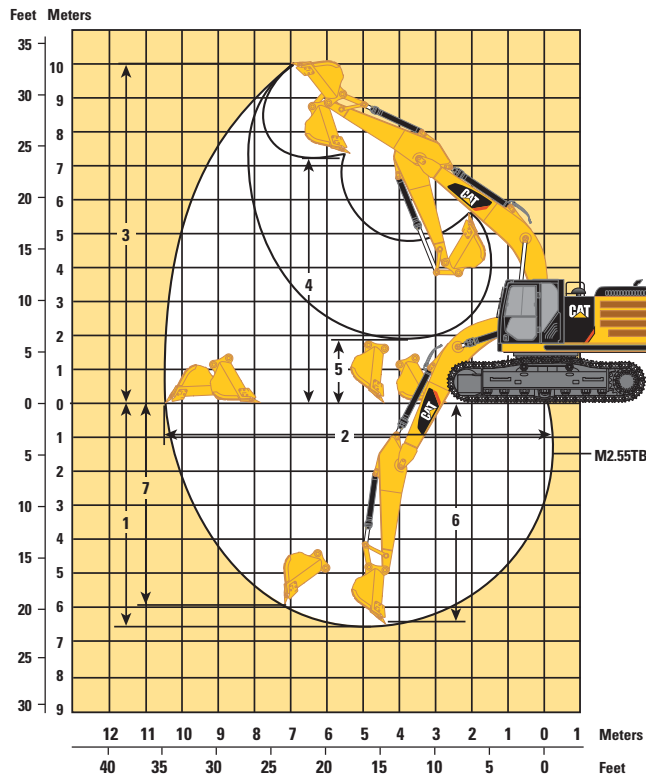
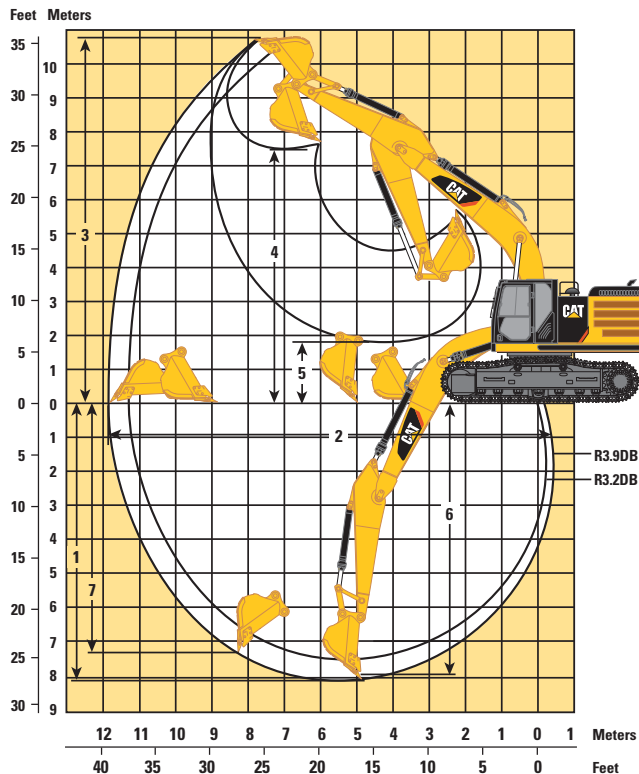


Stick	Extreme Service and Heavy Duty Reach Booms 6.50 m (21'4")		Mass Boom 6.18 m (20'3")
	R3.9DB (12'10")	R3.2DB (10'6")	M2.55TB (8'4")
	mm (ft)	mm (ft)	mm (ft)
1 Shipping Height (with Shoe Lug Height)	3660 (12'0")	3510 (11'6")	3600 (11'10")
2 Shipping Length	11 170 (36'8")	11 160 (36'7")	10 890 (35'9")
3 Tail Swing Radius	3470 (11'5")	3470 (11'5")	3470 (11'5")
4 Length to Center of Rollers Long Undercarriage	4040 (13'3")	4040 (13'3")	4040 (13'3")
5 Track Length Long Undercarriage	5030 (16'6")	5030 (16'6")	5030 (16'6")
6 Ground Clearance With Shoe Lug Height	510 (1'8")	510 (1'8")	510 (1'8")
Without Shoe Lug Height	480 (1'7")	480 (1'7")	480 (1'7")
7 Track Gauge Long Undercarriage	2590 (8'6")	2590 (8'6")	2590 (8'6")
8 Transport Width Long/Std U/C – 700 mm (28") Shoes	3290 (10'10")	3290 (10'10")	3290 (10'10")
Long/Std U/C – 800 mm (32") Shoes	3390 (11'1")	3390 (11'1")	3390 (11'1")
Long/Std U/C – 850 mm (34") Shoes	3440 (11'3")	3440 (11'3")	3440 (11'3")
9 Cab Height Cab Height with Top Guard	3150 (10'4") 3360 (11'0")	3150 (10'4") 3360 (11'0")	3150 (10'4") 3360 (11'0")
10 Counterweight Clearance (without Shoe Lug Height)	1220 (4'0")	1220 (4'0")	1220 (4'0")

336F L Hydraulic Excavator Specifications

Working Ranges

All dimensions are approximate.



Extreme Service and Heavy Duty Reach Booms 6.50 m (21'4")

Mass Boom 6.18 m (20'3")

Stick	R3.9DB (12'10")	R3.2DB (10'6")	M2.55TB (8'4")
	mm (ft)	mm (ft)	mm (ft)
1 Maximum Digging Depth	8190 (26'10")	7490 (24'7")	6650 (21'10")
2 Maximum Reach at Ground Level	11 720 (38'5")	11 020 (36'2")	10 260 (33'8")
3 Maximum Cutting Height	10 740 (35'3")	10 320 (33'10")	9970 (32'9")
4 Maximum Loading Height	7500 (24'7")	7110 (23'4")	6620 (21'9")
5 Minimum Loading Height	1910 (6'3")	2610 (8'7")	2920 (9'7")
6 Maximum Depth Cut for 2440 mm (8'0") Level Bottom	7610 (25'0")	6820 (22'5")	5810 (19'1")
7 Maximum Vertical Wall Digging Depth	6310 (20'8")	5500 (18'1")	4450 (14'7")

336F L Hydraulic Excavator Specifications

Operating Weights and Ground Pressures

	850 mm (34") Triple Grouser Shoes		800 mm (32") Triple Grouser Shoes		700 mm (28") Triple Grouser Shoes	
	kg (lb)	kPa (psi)	kg (lb)	kPa (psi)	kg (lb)	kPa (psi)
Long Undercarriage						
HD Reach Boom – 6.50 m (21'4")						
R3.9DB (12'10")	37 700 (83,100)	49.6 (7.2)	37 400 (82,500)	52.2 (7.6)	36 700 (80,900)	58.6 (8.5)
R3.2DB (10'6")	37 500 (82,700)	49.3 (7.2)	37 200 (82,000)	52.0 (7.5)	36 500 (80,500)	58.3 (8.5)
ES Reach Boom – 6.50 m (21'4") – including 7.0 mt (7.7 t) counterweight						
R3.9DB HD (12'10")	39 300 (86,600)	51.7 (7.5)	39 000 (86,000)	54.5 (7.9)	38 300 (84,400)	61.2 (8.9)
R3.2DB HD (10'6")	39 100 (86,200)	51.4 (7.5)	38 800 (85,500)	54.2 (7.9)	38 100 (84,000)	60.8 (8.8)
Mass Boom – 6.18 m (20'3")						
M2.55TB (8'4")	40 100 (88,400)	52.7 (7.6)	39 800 (87,700)	55.6 (8.1)	39 100 (86,200)	62.4 (9.1)

Major Component Weights*

	kg	lb
Lower Structure (without counterweight and track)		
Long Undercarriage	8900	19,600
Upper Structure (without front linkage)		
For 6.0 mt (6.6 t) counterweight	9900	21,800
For 7.0 mt (7.7 t) counterweight	10 000	22,000
Counterweight		
6.0 mt (6.6 t)	6000	13,200
7.0 mt (7.7 t)	7000	15,400
Boom (includes lines, pins and stick cylinder)		
HD Reach Boom – 6.50 m (21'4")	4100	9,000
ES Reach Boom – 6.50 m (21'4")	4300	9,500
Mass Boom – 6.18 m (20'3")	4200	9,300
Stick (includes lines, pins and bucket cylinder)		
R3.9DB HD (12'10")	1900	4,200
R3.9DB ES (12'10")	2100	4,600
R3.2DB HD (10'6")	1800	4,000
R3.2DB ES (10'6")	1900	4,200
M2.55TB (8'4")	2100	4,600
Track Shoes (Long)		
700 mm (28") triple grouser	4400	9,700
800 mm (32") triple grouser	5100	11,200
850 mm (34") triple grouser	5400	11,900
Quick Coupler	600	1,300
Buckets		
DB1536GP-C 342-2192 SAE 2.28 m ³ (2.98 yd ³)	1500	3,300
TB1676SD 339-3748 SAE 2.41 m ³ (3.15 yd ³)	2500	5,500

*Base machine includes 75 kg (165 lb) operator weight and 90% fuel weight, and undercarriage with center guard.

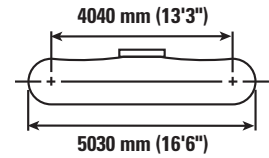
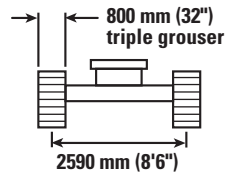
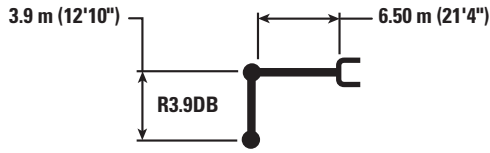
336F L Hydraulic Excavator Specifications

Bucket and Stick Forces

Stick	Extreme Service and Heavy Duty Reach Booms 6.50 m (21'4")		Mass Boom 6.18 m (20'3")
	R3.9DB (12'10") kN (lbf)	R3.2DB (10'6") kN (lbf)	M2.55TB (8'4") kN (lbf)
General Duty			
Bucket Digging Force (SAE)	188.5 (42,380)	188.5 (42,380)	234.7 (52,760)
Stick Digging Force (SAE)	141.5 (31,810)	162.1 (36,440)	184.6 (41,500)
Heavy Duty			
Bucket Digging Force (SAE)	184.9 (41,570)	184.9 (41,570)	234.7 (52,760)
Stick Digging Force (SAE)	140.7 (31,630)	161.1 (36,220)	184.6 (41,500)
Severe Duty			
Bucket Digging Force (SAE)	184.9 (41,570)	184.9 (41,570)	231.0 (51,930)
Stick Digging Force (SAE)	140.7 (31,630)	161.1 (36,220)	183.9 (41,340)
Extreme Duty			
Bucket Digging Force (SAE)	184.9 (41,570)	184.9 (41,570)	–
Stick Digging Force (SAE)	140.7 (31,630)	161.1 (36,220)	–

336F L Hydraulic Excavator Specifications

Heavy Duty Reach Boom Lift Capacities – Counterweight: 6.0 mt (6.6 t) – Heavy Lift: On



		1.5 m/5.0 ft		3.0 m/10.0 ft		4.5 m/15.0 ft		6.0 m/20.0 ft		7.5 m/25.0 ft		9.0 m/30.0 ft		m ft		
9.0 m	kg													*6250	*6250	7.35
30.0 ft	lb													*13,950	*13,950	23.64
7.5 m	kg									*7700	7650			*5800	*5800	8.53
25.0 ft	lb									*17,050	16,450			*12,850	*12,850	27.74
6.0 m	kg									*8000	7550	*7500	5550	*5650	5150	9.33
20.0 ft	lb									*17,550	16,200	*14,550	11,850	*12,450	11,500	30.48
4.5 m	kg							*9800	*9800	*8750	7300	*8200	5450	*5650	4650	9.84
15.0 ft	lb							*21,200	*21,200	*19,100	15,650	*17,950	11,650	*12,450	10,250	32.22
3.0 m	kg					*15 300	14 850	*11 600	9700	*9750	6950	8250	5250	*5850	4350	10.10
10.0 ft	lb					*32,900	32,000	*25,100	20,850	*21,150	14,950	17,700	11,300	*12,850	9,600	33.11
1.5 m	kg					*18 450	13 700	*13 300	9100	10 600	6650	8050	5100	*6200	4250	10.12
5.0 ft	lb					*39,800	29,450	*28,800	19,600	22,750	14,250	17,300	10,900	*13,600	9,350	33.22
0.0 m	kg			*8550	*8550	*20 100	13 050	14 450	8700	10 300	6400	7900	4950	*6750	4300	9.93
0.0 ft	lb			*19,400	*19,400	*43,450	28,050	31,000	18,700	22,150	13,700	16,950	10,600	*14,850	9,450	32.56
-1.5 m	kg	*8900	*8900	*13 300	*13 300	*20 350	12 800	14 150	8450	10 100	6200	7800	4850	7250	4550	9.48
-5.0 ft	lb	*19,900	*19,900	*30,050	*30,050	*44,100	27,500	30,450	18,200	21,750	13,400	16,800	10,450	16,000	10,000	31.09
-3.0 m	kg	*14 100	*14 100	*19 400	*19 400	*19 500	12 800	14 100	8400	10 100	6200			8150	5050	8.76
-10.0 ft	lb	*31,550	*31,550	*43,850	*43,850	*42,150	27,550	30,350	18,100	21,700	13,350			18,000	11,200	28.66
-4.5 m	kg	*20 200	*20 200	*24 050	*24 050	*17 350	13 000	*13 200	8550	*9900	6350			*9450	6150	7.69
-15.0 ft	lb	*45,400	*45,400	*51,900	*51,900	*37,450	28,000	*28,300	18,400	*20,850	13,700			*20,850	13,700	25.01
-6.0 m	kg					*13 250	*13 250	*9400	8950					*9250	8850	6.06
-20.0 ft	lb					*27,950	*27,950							*20,250	20,100	19.44



ISO 10567



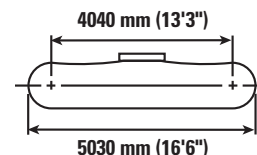
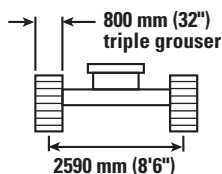
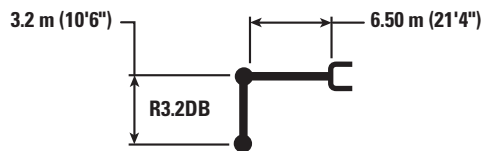
*Indicates that the load is limited by hydraulic lifting capacity rather than tipping load. The above loads are in compliance with hydraulic excavator lift capacity standard ISO 10567:2007. They do not exceed 87% of hydraulic lifting capacity or 75% of tipping load. Weight of all lifting accessories must be deducted from the above lifting capacities. Lifting capacities are based on the machine standing on a firm, uniform supporting surface. The use of a work tool attachment point to handle/lift objects, could affect the machine lift performance.

Lift capacity stays with ±5% for all available track shoes.

Always refer to the appropriate Operation and Maintenance Manual for specific product information.

336F L Hydraulic Excavator Specifications

Heavy Duty Reach Boom Lift Capacities – Counterweight: 6.0 mt (6.6 t) – Heavy Lift: On



		1.5 m/5.0 ft		3.0 m/10.0 ft		4.5 m/15.0 ft		6.0 m/20.0 ft		7.5 m/25.0 ft		9.0 m/30.0 ft		m ft		
7.5 m 25.0 ft	kg lb									*8800	7500			*9100	8700	6.58
6.0 m 20.0 ft	kg lb									*8900	7400			*8700	6800	7.59
										*19,500	15,950			*19,150	15,100	24.74
4.5 m 15.0 ft	kg lb					*13 500	*13 500	*10 900	10 100	*9550	7200	8350	5350	*8650	5850	8.21
								*23,600	21,750	*20,800	15,450			*19,100	12,950	26.85
3.0 m 10.0 ft	kg lb					*17 150	14 400	*12 600	9500	*10 450	6900	8200	5250	8500	5400	8.51
						*36,800	31,050	*27,250	20,500	*22,700	14,850	17,650	11,250	18,800	11,850	27.92
1.5 m 5.0 ft	kg lb					*19 700	13 450	*14 100	9000	10 550	6600	8050	5100	8350	5250	8.55
						*42,550	28,950	*30,500	19,450	22,700	14,250	17,300	10,950	18,350	11,500	28.05
0.0 m 0.0 ft	kg lb					*20 550	13 050	14 450	8700	10 300	6400	7950	5000	8600	5350	8.31
						*44,550	28,050	31,000	18,700	22,200	13,800	17,100	10,750	18,950	11,800	27.27
-1.5 m -5.0 ft	kg lb			*14 500	*14 500	*20 150	12 950	14 250	8550	10 200	6300			9450	5850	7.78
				*32,800	*32,800	*43,750	27,850	30,650	18,400	22,000	13,600			20,850	12,950	25.48
-3.0 m -10.0 ft	kg lb			*22 850	*22 850	*18 700	13 050	*14 250	8600	10 250	6350			*10 800	7050	6.88
				*51,700	*51,700	*40,550	28,100	30,750	18,500	22,100	13,750			*23,750	15,600	22.45
-4.5 m -15.0 ft	kg lb			*21 050	*21 050	*15 900	13 350	*12 050	8800					*10 050	*10 050	5.43
				*45,350	*45,350	*34,100	28,800	*25,650	19,000					*21,950	*21,950	17.51
-6.0 m -20.0 ft	kg lb															



ISO 10567



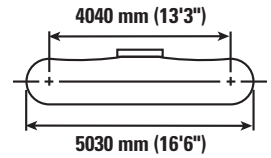
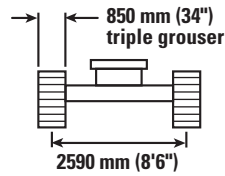
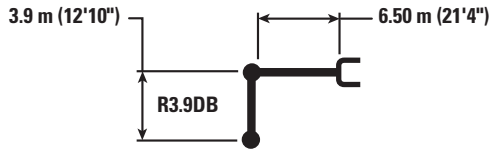
*Indicates that the load is limited by hydraulic lifting capacity rather than tipping load. The above loads are in compliance with hydraulic excavator lift capacity standard ISO 10567:2007. They do not exceed 87% of hydraulic lifting capacity or 75% of tipping load. Weight of all lifting accessories must be deducted from the above lifting capacities. Lifting capacities are based on the machine standing on a firm, uniform supporting surface. The use of a work tool attachment point to handle/lift objects, could affect the machine lift performance.

Lift capacity stays with ±5% for all available track shoes.

Always refer to the appropriate Operation and Maintenance Manual for specific product information.

336F L Hydraulic Excavator Specifications

Heavy Duty Reach Boom Lift Capacities – Counterweight: 6.0 mt (6.6 t) – Heavy Lift: On



		1.5 m/5.0 ft		3.0 m/10.0 ft		4.5 m/15.0 ft		6.0 m/20.0 ft		7.5 m/25.0 ft		9.0 m/30.0 ft		m ft		
9.0 m	kg													*6250	*6250	7.35
30.0 ft	lb													*13,950	*13,950	23.64
7.5 m	kg									*7700	*7700			*5800	*5800	8.53
25.0 ft	lb									*17,050	16,550			*12,850	*12,850	27.74
6.0 m	kg									*8000	7600	*7500	5600	*5650	5200	9.33
20.0 ft	lb									*17,550	16,300	*14,550	11,900	*12,450	11,550	30.48
4.5 m	kg							*9800	*9800	*8750	7350	*8200	5450	*5650	4700	9.84
15.0 ft	lb							*21,200	*21,200	*19,100	15,750	*17,950	11,750	*12,450	10,350	32.22
3.0 m	kg					*15 300	14 950	*11 600	9750	*9750	7000	8300	5300	*5850	4400	10.10
10.0 ft	lb					*32,900	32,200	*25,100	21,000	*21,150	15,100	17,850	11,400	*12,850	9,650	33.11
1.5 m	kg					*18 450	13 750	*13 300	9150	10 650	6700	8100	5100	*6200	4300	10.12
5.0 ft	lb					*39,800	29,700	*28,800	19,750	22,950	14,400	17,450	11,000	*13,600	9,400	33.22
0.0 m	kg			*8550	*8550	*20 100	13 150	*14 500	8750	10 400	6450	7950	5000	*6750	4350	9.93
0.0 ft	lb			*19,400	*19,400	*43,450	28,250	31,250	18,850	22,300	13,850	17,100	10,700	*14,850	9,500	32.56
-1.5 m	kg	*8900	*8900	*13 300	*13 300	*20 350	12 900	14 300	8500	10 200	6250	7850	4900	7300	4600	9.48
-5.0 ft	lb	*19,900	*19,900	*30,050	*30,050	*44,100	27,700	30,700	18,350	21,950	13,500	16,950	10,550	16,150	10,050	31.09
-3.0 m	kg	*14 100	*14 100	*19 400	*19 400	*19 500	12 900	14 250	8450	10 150	6250			8200	5100	8.76
-10.0 ft	lb	*31,550	*31,550	*43,850	*43,850	*42,150	27,750	30,550	18,250	21,900	13,450			18,100	11,300	28.66
-4.5 m	kg	*20 200	*20 200	*24 050	*24 050	*17 350	13 100	*13 200	8600	*9900	6400			*9450	6200	7.69
-15.0 ft	lb	*45,400	*45,400	*51,900	*51,900	*37,450	28,250	*28,300	18,550	*20,850	13,800			*20,850	13,800	25.01
-6.0 m	kg					*13 250	*13 250	*9400	9000					*9250	8900	6.06
-20.0 ft	lb					*27,950	*27,950							*20,250	*20,250	19.44



ISO 10567



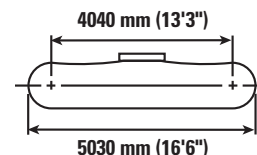
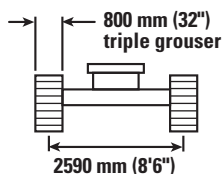
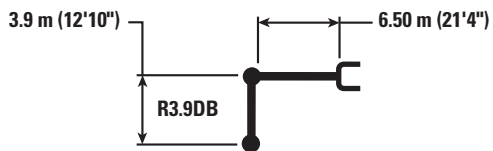
*Indicates that the load is limited by hydraulic lifting capacity rather than tipping load. The above loads are in compliance with hydraulic excavator lift capacity standard ISO 10567:2007. They do not exceed 87% of hydraulic lifting capacity or 75% of tipping load. Weight of all lifting accessories must be deducted from the above lifting capacities. Lifting capacities are based on the machine standing on a firm, uniform supporting surface. The use of a work tool attachment point to handle/lift objects, could affect the machine lift performance.

Lift capacity stays with ±5% for all available track shoes.

Always refer to the appropriate Operation and Maintenance Manual for specific product information.

336F L Hydraulic Excavator Specifications

Extreme Service Reach Boom Lift Capacities – Counterweight: 7.0 mt (7.7 t) – Heavy Lift: On



		1.5 m/5.0 ft		3.0 m/10.0 ft		4.5 m/15.0 ft		6.0 m/20.0 ft		7.5 m/25.0 ft		9.0 m/30.0 ft		m ft		
9.0 m	kg													*6150	*6150	7.35
30.0 ft	lb													*13,650	*13,650	23.64
7.5 m	kg									*7500	*7500			*5700	*5700	8.53
25.0 ft	lb									*16,550	*16,550			*12,600	*12,600	27.74
6.0 m	kg									*7800	*7800	*7400	5900	*5550	5500	9.33
20.0 ft	lb									*17,050	*17,050	*14,250	12,600	*12,200	*12,200	30.48
4.5 m	kg							*9550	*9550	*8550	7750	*7950	5800	*5550	4950	9.84
15.0 ft	lb							*20,650	*20,650	*18,550	16,700	*17,400	12,400	*12,200	10,900	32.22
3.0 m	kg					*15 000	*15 000	*11 300	10 350	*9500	7400	*8450	5600	*5700	4600	10.10
10.0 ft	lb					*32,200	*32,200	*24,450	22,300	*20,550	15,950	*18,350	12,000	*12,550	10,150	33.11
1.5 m	kg					*18 050	14 650	*13 000	9700	*10 450	7050	8500	5400	*6050	4500	10.12
5.0 ft	lb					*38,900	31,550	*28,050	20,950	*22,600	15,200	18,300	11,600	*13,300	9,900	33.22
0.0 m	kg			*8400	*8400	*19 650	13 950	*14 150	9250	10 950	6800	8350	5250	*6600	4550	9.93
0.0 ft	lb			*19,150	*19,150	*42,450	30,000	*30,600	19,950	23,500	14,600	17,950	11,250	*14,550	10,000	32.56
-1.5 m	kg	*8800	*8800	*13 200	*13 200	*19 850	13 700	*14 600	9000	10 750	6600	8250	5150	*7500	4800	9.48
-5.0 ft	lb	*19,600	*19,600	*29,800	*29,800	*43,050	29,400	*31,600	19,400	23,100	14,250	17,800	11,100	*16,550	10,600	31.09
-3.0 m	kg	*13 950	*13 950	*19 250	*19 250	*19 000	13 700	*14 250	8950	10 700	6600			8600	5400	8.76
-10.0 ft	lb	*31,250	*31,250	*43,600	*43,600	*41,150	29,450	*30,800	19,300	23,050	14,200			19,050	11,900	28.66
-4.5 m	kg	*20 100	*20 100	*23 450	*23 450	*16 900	13 950	*12 800	9100	*9600	6750			*9150	6550	7.69
-15.0 ft	lb	*45,150	*45,150	*50,600	*50,600	*36,450	30,000	*27,500	19,650	*20,200	14,600			*20,150	14,600	25.01
-6.0 m	kg					*12 850	*12 850	*9050	*9050					*8900	*8900	6.06
-20.0 ft	lb					*27,050	*27,050							*19,500	*19,500	19.44



ISO 10567



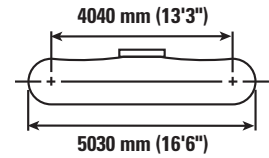
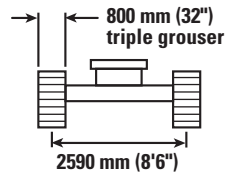
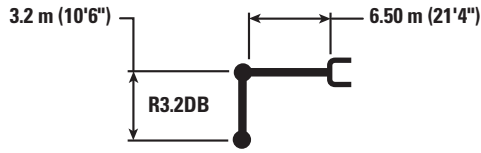
*Indicates that the load is limited by hydraulic lifting capacity rather than tipping load. The above loads are in compliance with hydraulic excavator lift capacity standard ISO 10567:2007. They do not exceed 87% of hydraulic lifting capacity or 75% of tipping load. Weight of all lifting accessories must be deducted from the above lifting capacities. Lifting capacities are based on the machine standing on a firm, uniform supporting surface. The use of a work tool attachment point to handle/lift objects, could affect the machine lift performance.

Lift capacity stays with $\pm 5\%$ for all available track shoes.

Always refer to the appropriate Operation and Maintenance Manual for specific product information.

336F L Hydraulic Excavator Specifications

Extreme Service Reach Boom Lift Capacities – Counterweight: 7.0 mt (7.7 t) – Heavy Lift: On



		1.5 m/5.0 ft		3.0 m/10.0 ft		4.5 m/15.0 ft		6.0 m/20.0 ft		7.5 m/25.0 ft		9.0 m/30.0 ft		m ft		
7.5 m	kg									*8600	8000			*7300	*7300	7.70
25.0 ft	lb													*16,200	*16,200	24.98
6.0 m	kg									*8700	7950			*7100	6300	8.58
20.0 ft	lb									*19,100	17,050			*15,650	14,050	28.00
4.5 m	kg					*13 300	*13 300	*10 700	*10 700	*9350	7700	*8400	5750	*7150	5600	9.13
15.0 ft	lb							*23,150	*23,150	*20,350	16,600			*15,750	12,400	29.88
3.0 m	kg					*16 850	15 450	*12 350	10 200	*10 200	7400	8750	5600	*7450	5250	9.40
10.0 ft	lb					*36,150	33,350	*26,700	22,050	*22,200	15,900	18,750	12,050	*16,350	11,500	30.84
1.5 m	kg					*19 350	14 450	*13 850	9700	*11 050	7100	8550	5450	*7950	5100	9.43
5.0 ft	lb					*41,800	31,150	*29,900	20,850	*23,950	15,250	18,450	11,750	*17,500	11,200	30.96
0.0 m	kg					*20 200	14 000	*14 700	9350	11 000	6900	8450	5350	8150	5200	9.22
0.0 ft	lb					*43,750	30,150	*31,800	20,100	23,650	14,800	18,200	11,500	18,000	11,400	30.25
-1.5 m	kg			*14 400	*14 400	*19 800	13 900	*14 750	9200	10 900	6750			8800	5550	8.74
-5.0 ft	lb			*32,600	*32,600	*42,900	29,950	*32,000	19,750	23,450	14,600			19,350	12,200	28.65
-3.0 m	kg			*22 750	*22 750	*18 350	14 050	*13 950	9200	*10 800	6800			*9850	6350	7.96
-10.0 ft	lb			*51,500	*51,500	*39,700	30,200	*30,150	19,850	*23,150	14,700			*21,750	14,000	26.00
-4.5 m	kg			*20 600	*20 600	*15 500	14 400	*11 750	9450					*9900	8100	6.75
-15.0 ft	lb			*44,350	*44,350	*33,350	30,950	*25,000	20,400					*21,800	18,100	21.90
-6.0 m	kg															
-20.0 ft	lb															



ISO 10567



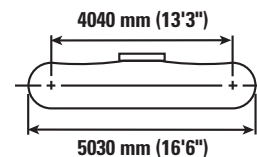
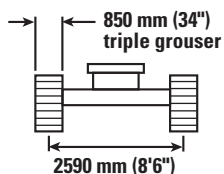
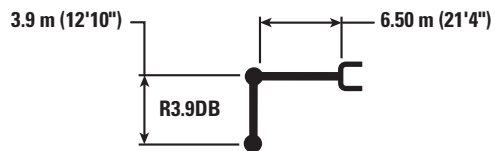
*Indicates that the load is limited by hydraulic lifting capacity rather than tipping load. The above loads are in compliance with hydraulic excavator lift capacity standard ISO 10567:2007. They do not exceed 87% of hydraulic lifting capacity or 75% of tipping load. Weight of all lifting accessories must be deducted from the above lifting capacities. Lifting capacities are based on the machine standing on a firm, uniform supporting surface. The use of a work tool attachment point to handle/lift objects, could affect the machine lift performance.

Lift capacity stays with ±5% for all available track shoes.

Always refer to the appropriate Operation and Maintenance Manual for specific product information.

336F L Hydraulic Excavator Specifications

Extreme Service Reach Boom Lift Capacities – Counterweight: 7.0 mt (7.7 t) – Heavy Lift: On



		1.5 m/5.0 ft		3.0 m/10.0 ft		4.5 m/15.0 ft		6.0 m/20.0 ft		7.5 m/25.0 ft		9.0 m/30.0 ft		m ft		
9.0 m	kg													*6150	*6150	7.35
30.0 ft	lb													*13,650	*13,650	23.64
7.5 m	kg									*7500	*7500			*5700	*5700	8.53
25.0 ft	lb									*16,550	*16,550			*12,600	*12,600	27.74
6.0 m	kg									*7800	*7800	*7400	5950	*5550	*5550	9.33
20.0 ft	lb									*17,050	*17,050	*14,250	12,650	*12,200	*12,200	30.48
4.5 m	kg							*9550	*9550	*8550	7850	*7950	5800	*5550	4950	9.84
15.0 ft	lb							*20,650	*20,650	*18,550	16,850	*17,400	12,450	*12,200	10,950	32.22
3.0 m	kg					*15 000	*15 000	*11 300	10 400	*9500	7450	*8450	5650	*5700	4650	10.10
10.0 ft	lb					*32,200	*32,200	*24,450	22,450	*20,550	16,050	*18,350	12,100	*12,550	10,250	33.11
1.5 m	kg					*18 050	14 750	*13 000	9800	*10 450	7100	8600	5450	*6050	4550	10.12
5.0 ft	lb					*38,900	31,750	*28,050	21,100	*22,600	15,300	18,450	11,700	*13,300	9,950	33.22
0.0 m	kg			*8400	*8400	*19 650	14 050	*14 150	9350	11 000	6850	8400	5300	*6600	4600	9.93
0.0 ft	lb			*19,150	*19,150	*42,450	30,200	*30,600	20,100	23,650	14,700	18,100	11,350	*14,550	10,100	32.56
-1.5 m	kg	*8800	*8800	*13 200	*13 200	*19 850	13 800	*14 600	9100	10 800	6650	8350	5200	*7500	4850	9.48
-5.0 ft	lb	*19,600	*19,600	*29,800	*29,800	*43,050	29,650	*31,600	19,550	23,300	14,350	17,900	11,200	*16,550	10,700	31.09
-3.0 m	kg	*13 950	*13 950	*19 250	*19 250	*19 000	13 800	*14 250	9050	10 800	6650			8700	5400	8.76
-10.0 ft	lb	*31,250	*31,250	*43,600	*43,600	*41,150	29,650	*30,800	19,450	23,200	14,300			19,200	12,000	28.66
-4.5 m	kg	*20 100	*20 100	*23 450	*23 450	*16 900	14 050	*12 800	9150	*9600	6800			*9150	6600	7.69
-15.0 ft	lb	*45,150	*45,150	*50,600	*50,600	*36,450	30,200	*27,500	19,750	*20,200	14,700			*20,150	14,700	25.01
-6.0 m	kg					*12 850	*12 850	*9050	*9050					*8900	*8900	6.06
-20.0 ft	lb					*27,050	*27,050							*19,500	*19,500	19.44



ISO 10567



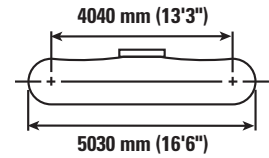
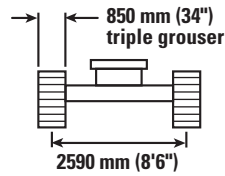
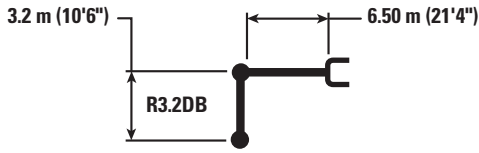
*Indicates that the load is limited by hydraulic lifting capacity rather than tipping load. The above loads are in compliance with hydraulic excavator lift capacity standard ISO 10567:2007. They do not exceed 87% of hydraulic lifting capacity or 75% of tipping load. Weight of all lifting accessories must be deducted from the above lifting capacities. Lifting capacities are based on the machine standing on a firm, uniform supporting surface. The use of a work tool attachment point to handle/lift objects, could affect the machine lift performance.





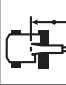

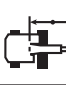

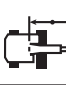

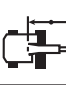

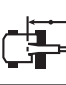
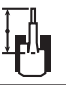
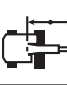
Lift capacity stays with ±5% for all available track shoes.

Always refer to the appropriate Operation and Maintenance Manual for specific product information.

336F L Hydraulic Excavator Specifications

Extreme Service Reach Boom Lift Capacities – Counterweight: 7.0 mt (7.7 t) – Heavy Lift: On



		1.5 m/5.0 ft		3.0 m/10.0 ft		4.5 m/15.0 ft		6.0 m/20.0 ft		7.5 m/25.0 ft		9.0 m/30.0 ft				
																m ft
7.5 m 25.0 ft	kg lb									*8600 8050			*7300 *16,200	*7300 *16,200	7.70 24.98	
6.0 m 20.0 ft	kg lb									*8700 *19,100	8000 17,200			*7100 *15,650	6350 14,150	8.58 28.00
4.5 m 15.0 ft	kg lb					*13 300 *13 300	*10 700 *23,150	*10 700 *23,150	*9350 *20,350	7750 16,700	*8400 5800			*7150 *15,750	5650 12,450	9.13 29.88
3.0 m 10.0 ft	kg lb					*16 850 *36,150	15 550 33,600	*12 350 *26,700	10 300 22,200	*10 200 *22,200	7450 16,000	8800 18,900	5650 12,150	*7450 *16,350	5250 11,600	9.40 30.84
1.5 m 5.0 ft	kg lb					*19 350 *41,800	14 550 31,350	*13 850 *29,900	9750 21,000	*11 050 *23,950	7150 15,400	8650 18,550	5500 11,800	*7950 *17,500	5150 11,300	9.43 30.96
0.0 m 0.0 ft	kg lb					*20 200 *43,750	14 100 30,350	*14 700 *31,800	9400 20,250	11 100 23,850	6950 14,900	8500 18,350	5400 11,600	8250 18,100	5200 11,450	9.22 30.25
-1.5 m -5.0 ft	kg lb			*14 400 *32,600	*14 400 *32,600	*19 800 *42,900	14 000 30,150	*14 750 *32,000	9250 19,900	10 950 23,600	6800 14,700			8850 19,500	5600 12,300	8.74 28.65
-3.0 m -10.0 ft	kg lb			*22 750 *51,500	*22 750 *51,500	*18 350 *39,700	14 150 30,400	*13 950 *30,150	9300 20,000	*10 800 *23,150	6850 14,800			*9850 *21,750	6400 14,100	7.96 26.00
-4.5 m -15.0 ft	kg lb			*20 600 *44,350	*20 600 *44,350	*15 500 *33,350	14 500 31,150	*11 750 *25,000	9500 20,550					*9900 *21,800	8150 18,250	6.75 21.90
-6.0 m -20.0 ft	kg lb															



ISO 10567



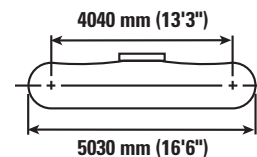
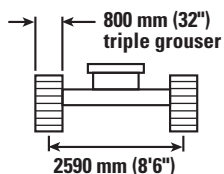
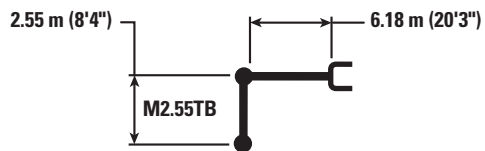
*Indicates that the load is limited by hydraulic lifting capacity rather than tipping load. The above loads are in compliance with hydraulic excavator lift capacity standard ISO 10567:2007. They do not exceed 87% of hydraulic lifting capacity or 75% of tipping load. Weight of all lifting accessories must be deducted from the above lifting capacities. Lifting capacities are based on the machine standing on a firm, uniform supporting surface. The use of a work tool attachment point to handle/lift objects, could affect the machine lift performance.

Lift capacity stays with ±5% for all available track shoes.

Always refer to the appropriate Operation and Maintenance Manual for specific product information.

336F L Hydraulic Excavator Specifications

Mass Boom Lift Capacities – Counterweight: 6.0 mt (6.6 t) – Heavy Lift: On



		1.5 m/5.0 ft		3.0 m/10.0 ft		4.5 m/15.0 ft		6.0 m/20.0 ft		7.5 m/25.0 ft		9.0 m/30.0 ft		m ft		
7.5 m 25.0 ft	kg lb							*10 300 *22,700	*10 300 22,400					*9100 *20,150	8900 20,150	6.58 21.25
6.0 m 20.0 ft	kg lb							*10 650 *23,150	10 250 22,100	*9900 7100				*8700 *19,150	6950 15,500	7.59 24.74
4.5 m 15.0 ft	kg lb					*14 850 *31,900	*14 850 *31,900	*11 800 *25,600	9800 21,150	*10 400 *22,650	6950 14,950			*8650 *19,100	6000 13,300	8.21 26.85
3.0 m 10.0 ft	kg lb					*18 150 *39,050	14 000 30,200	*13 300 *28,800	9300 20,000	10 650 22,950	6700 14,450			8750 19,300	5550 12,200	8.51 27.92
1.5 m 5.0 ft	kg lb					*20 200 *43,650	13 200 28,400	*14 550 31,400	8850 19,000	10 400 22,400	6500 13,950			8550 18,850	5400 11,850	8.55 28.05
0.0 m 0.0 ft	kg lb					*20 450 *44,300	12 900 27,800	14 300 30,750	8550 18,450	10 250 22,000	6300 13,600			8850 19,450	5500 12,150	8.31 27.27
-1.5 m -5.0 ft	kg lb			*18 400 *41,800	*18 400 *41,800	*19 400 *42,100	12 950 27,800	14 250 30,550	8500 18,300	10 200 22,000	6300 13,600			9700 21,450	6050 13,300	7.78 25.48
-3.0 m -10.0 ft	kg lb			*22 250 *48,350	*22 250 *48,350	*17 150 *37,100	13 150 28,250	*13 050 *28,100	8650 18,600					*10 800 *23,750	7250 16,050	6.88 22.45
-4.5 m -15.0 ft	kg lb					*12 650 *26,750	*12 650 *26,750							*10 050 *21,950	*10 050 *21,950	5.43 17.51
-6.0 m -20.0 ft	kg lb															



ISO 10567



*Indicates that the load is limited by hydraulic lifting capacity rather than tipping load. The above loads are in compliance with hydraulic excavator lift capacity standard ISO 10567:2007. They do not exceed 87% of hydraulic lifting capacity or 75% of tipping load. Weight of all lifting accessories must be deducted from the above lifting capacities. Lifting capacities are based on the machine standing on a firm, uniform supporting surface. The use of a work tool attachment point to handle/lift objects, could affect the machine lift performance.

Lift capacity stays with ±5% for all available track shoes.

Always refer to the appropriate Operation and Maintenance Manual for specific product information.

336F L Hydraulic Excavator Specifications

Work Tool Offering Guide*

Boom Type	Heavy Duty Reach Boom		Extreme Service Reach Boom		Mass Boom
Stick Size	R3.9 (HD) (12'10")	R3.2 (HD) (10'6")	R3.9 (ES) (12'10")	R3.2 (ES) (10'6")	M2.55 (8'4")
Hydraulic Hammer	H140E s H160E s**	H140E s H160E s H180E s**^	H140E s H160E s**	H140E s H160E s H180E s**	H140E s H160E s H180E s**
Multi-Processor	MP324 CC Jaw MP324 D Jaw MP324 P Jaw MP324 S Jaw MP324 TS Jaw MP324 U Jaw MP30 CC Jaw*** MP30 CR Jaw*** MP30 PS Jaw***	MP324 CC Jaw MP324 D Jaw MP324 P Jaw MP324 S Jaw MP324 TS Jaw MP324 U Jaw MP30 CC Jaw^^ MP30 CR Jaw^^ MP30 PP Jaw***^ MP30 PS Jaw^^ MP30 TS Jaw***#	MP324 CC Jaw MP324 D Jaw MP324 P Jaw MP324 S Jaw MP324 TS Jaw MP324 U Jaw MP30 CC Jaw*** MP30 CR Jaw*** MP30 PS Jaw***	MP324 CC Jaw MP324 D Jaw MP324 P Jaw MP324 S Jaw MP324 TS Jaw MP324 U Jaw MP30 CC Jaw MP30 CR Jaw MP30 PP Jaw** MP30 PS Jaw MP30 S Jaw MP30 TS Jaw***	MP30 CC Jaw MP30 CR Jaw MP30 PP Jaw** MP30 PS Jaw MP30 S Jaw MP30 TS Jaw**
Pulverizer	P225 P235***	P225 P235^^	P225	P225 P235	P235
Demolition and Sorting Grapple	G325B G330***	G325B G330^^	G325B G330***	G325B G330	G330
Mobile Scrap and Demolition Shear	S325B S365C##	S325B S365C##	S325B** S365C##	S325B S365C##	S340B*** S365C##
Compactor (Vibratory Plate)	CVP110	CVP110	CVP110	CVP110	CVP110
Orange Peel Grapple	These work tools are available for the 336F L. Consult your Cat dealer for proper match.				
Rippers					
Pin Grabber Coupler					
Dedicated Quick Coupler					

*Matches are dependent on excavator configurations. Consult your Cat dealer for proper work tool match.

**Pin on or dedicated coupler.

***Pin on only.

#Over the front only.

##Boom mount.

^Over the front only with dedicated coupler.

^^Over the front only with Pin Grabber coupler.

336F L Hydraulic Excavator Specifications

Bucket Specifications and Compatibility

	Linkage	Width		Capacity		Weight		Fill	Mass Boom M2.55 (8'4")	Heavy Duty Reach Boom		Extreme Service Reach Boom		
		mm	in	m ³	yd ³	kg	lb			%	R3.2 HD (10'6")	R3.9 HD (12'10")	R3.2 ES (10'6")	R3.9 ES (12'10")
Without Quick Coupler														
General Duty (GDC)	DB	750	30	0.94	1.23	952	2,099	100%		●	●	●	●	
	DB	900	36	1.19	1.56	1040	2,292	100%		●	●	●	●	
	DB	1050	42	1.46	1.91	1147	2,528	100%		●	●	●	●	
	DB	1200	48	1.73	2.26	1232	2,716	100%		●	⊙	●	⊙	
	DB	1350	54	2.00	2.62	1342	2,957	100%		⊙	⊖	⊙	⊖	
	DB	1500	60	2.27	2.98	1451	3,197	100%		⊖	○	⊖	○	
	DB	1650	66	2.55	3.33	1536	3,386	100%		X	X	⊖	○	
Heavy Duty (HD)	DB	750	30	0.73	0.95	1031	2,273	100%		●	●	●	●	
	DB	900	36	0.95	1.24	1178	2,595	100%		●	●	●	●	
	DB	1050	42	1.17	1.54	1267	2,793	100%		●	●	●	●	
	DB	1200	48	1.40	1.84	1398	3,080	100%		●	●	●	●	
	DB	1350	54	1.64	2.14	1459	3,215	100%		●	⊙	●	⊙	
	DB	1500	60	1.88	2.46	1566	3,452	100%		⊙	⊖	●	⊖	
	DB	1650	66	2.12	2.77	1697	3,740	100%		X	X	⊙	○	
	DB	1800	72	2.36	3.08	1851	4,080	100%		X	X	⊖	○	
	TB	1800	71	2.69	3.52	2423	5,340	100%	○					
Severe Duty (SD)	DB	750	30	0.73	0.95	1096	2,415	90%		●	●	●	●	
	DB	900	36	0.95	1.24	1252	2,760	90%		●	●	●	●	
	DB	1050	42	1.17	1.54	1353	2,981	90%		●	●	●	●	
	DB	1200	48	1.40	1.84	1493	3,292	90%		●	●	●	●	
	DB	1350	54	1.64	2.14	1599	3,524	90%		●	⊙	●	●	
Maximum load pin on (payload + bucket)									kg	5790	4990	4360	5315	4585
									lb	12,761	10,998	9,609	11,714	10,105

The above loads are in compliance with hydraulic excavator standard EN474, they do not exceed 87% of hydraulic lifting capacity or 75% of tipping capacity with front linkage fully extended at ground line with bucket curled.

Capacity based on ISO 7451.

Bucket weight with General Duty tips.

Maximum Material Density:

- 2100 kg/m³ (3,500 lb/yd³)
- ⊙ 1800 kg/m³ (3,000 lb/yd³)
- ⊖ 1500 kg/m³ (2,500 lb/yd³)
- 1200 kg/m³ (2,000 lb/yd³)
- X Not Recommended

336F L Hydraulic Excavator Specifications

Bucket Specifications and Compatibility

	Linkage	Width		Capacity		Weight		Fill	Mass Boom M2.55 (8'4")	Heavy Duty Reach Boom		Extreme Service Reach Boom		
		mm	in	m ³	yd ³	kg	lb			%	R3.2 HD (10'6")	R3.9 HD (12'10")	R3.2 ES (10'6")	R3.9 ES (12'10")
With Quick Coupler														
General Duty (GDC)	DB	750	30	0.94	1.23	952	2,099	100%		●	●	●	●	
	DB	900	36	1.19	1.56	1040	2,292	100%		●	●	●	●	
	DB	1050	42	1.46	1.91	1147	2,528	100%		●	⊙	●	⊙	
	DB	1200	48	1.73	2.26	1232	2,716	100%		⊙	⊖	●	⊖	
	DB	1350	54	2.00	2.62	1342	2,957	100%		⊖	○	⊖	○	
	DB	1500	60	2.27	2.98	1451	3,197	100%		○	◇	⊖	◇	
	DB	1650	66	2.55	3.33	1536	3,386	100%		X	X	○	◇	
Heavy Duty (HD)	DB	750	30	0.73	0.95	1031	2,273	100%		●	●	●	●	
	DB	900	36	0.95	1.24	1178	2,595	100%		●	●	●	●	
	DB	1050	42	1.17	1.54	1267	2,793	100%		●	●	●	●	
	DB	1200	48	1.40	1.84	1398	3,080	100%		●	⊙	●	⊙	
	DB	1350	54	1.64	2.14	1459	3,215	100%		⊙	⊖	●	⊖	
	DB	1500	60	1.88	2.46	1566	3,452	100%		⊖	○	⊖	○	
	DB	1650	66	2.12	2.77	1697	3,740	100%		X	X	⊖	◇	
	TB	1800	71	2.36	3.08	1851	4,080	100%		X	X	○	◇	
Severe Duty (SD)	DB	750	30	0.73	0.95	1096	2,415	90%		●	●	●	●	
	DB	900	36	0.95	1.24	1252	2,760	90%		●	●	●	●	
	DB	1050	42	1.17	1.54	1353	2,981	90%		●	●	●	●	
	DB	1200	48	1.40	1.84	1493	3,292	90%		●	⊙	●	●	
	DB	1350	54	1.64	2.14	1599	3,524	90%		⊙	⊖	●	⊖	
Maximum load with coupler (payload + bucket)									kg	5232	4432	3802	4757	4027
									lb	11,531	9,768	8,379	10,484	8,875

Maximum Material Density:

- 2100 kg/m³ (3,500 lb/yd³)
- ⊙ 1800 kg/m³ (3,000 lb/yd³)
- ⊖ 1500 kg/m³ (2,500 lb/yd³)
- ◇ 1200 kg/m³ (2,000 lb/yd³)
- ◇ 900 kg/m³ (1,500 lb/yd³)
- X Not Recommended

The above loads are in compliance with hydraulic excavator standard EN474, they do not exceed 87% of hydraulic lifting capacity or 75% of tipping capacity with front linkage fully extended at ground line with bucket curled.

Capacity based on ISO 7451.

Bucket weight with General Duty tips.

Caterpillar recommends using appropriate work tools to maximize the value customers receive from our products. Use of work tools, including buckets, which are outside of Caterpillar's recommendations or specifications for weight, dimensions, flows, pressures, etc. may result in less-than-optimal performance, including but not limited to reductions in production, stability, reliability, and component durability. Improper use of a work tool resulting in sweeping, prying, twisting and/or catching of heavy loads will reduce the life of the boom and stick.

Standard Equipment

Standard equipment may vary. Consult your Cat dealer for details.

ENGINE

- Cat C9.3 ACERT diesel engine
- Biodiesel capable
- Meets U.S. EPA Tier 4 Final emission standards
- 2300 m (7,500 ft) altitude capability
- Electric priming pump
- Automatic engine speed control
- Standard, economy and high power modes
- Two-speed travel
- Side-by-side cooling system
- Radial seal air filter
- Primary filter with water separator and water separator indicator switch
- Fuel differential indicator switch in fuel line
- 2×4 micron main filters and 1×10 micron primary filter in fuel line
- Water level indicator for water separator

HYDRAULIC SYSTEM

- Regeneration circuit for boom and stick
- Reverse swing dampening valve
- Automatic swing parking brake
- High performance hydraulic return filter
- Capability of installing HP stackable valve and medium and QC valve
- Capability of installing additional auxiliary pump (up to 80 L/min [20 gal/min]) and circuit
- Capability of installing boom lowering control device and stick lowering check valve
- Capability of installing Cat Bio hydraulic oil

CAB

- Pressurized operator station with positive filtration
- Mirror package
- Sliding upper door window (left-hand cab door)
- Glass-breaking safety hammer
- Removable lower windshield with in cab storage bracket
- Coat hook
- Beverage holder
- Literature holder
- Radio with MP3 auxiliary audio port
- Two stereo speakers
- Storage shelf suitable for lunch or toolbox
- Color LCD display with warning, filter/fluid change, and working hour information
- Adjustable armrest
- Height adjustable joystick consoles
- Neutral lever (lock out) for all controls
- Travel control pedals with removable hand levers
- Capability of installing two additional pedals
- Two power outlets, 10 amp (total)
- Laminated glass front upper window and tempered other windows

UNDERCARRIAGE

- Grease Lubricated Track GLT2, resin seal
- Towing eye on base frame

ELECTRICAL

- 80 amp alternator
- Circuit breaker
- Capability to electrically connect a beacon

LIGHTS

- Halogen boom and cab lights with time delay
- Exterior lights integrated into storage box

SECURITY

- Cat one key security system
- Door locks
- Cap locks on fuel and hydraulic tanks
- Lockable external tool/storage box
- Signaling/warning horn
- Secondary engine shutoff switch
- Openable skylight for emergency exit
- Rearview camera

336F L Optional Equipment

Optional Equipment

Optional equipment may vary. Consult your Cat dealer for details.

ENGINE

- Electric refueling pump with auto shut off
- Starting kit, cold weather, -32° C (-26° F)
- Jump start receptacle
- Quick drains, engine and hydraulic oil
- Bio hydraulic oil package with compatible travel motors, fine filtration and bio oil

HYDRAULIC SYSTEM

- Control pattern quick-changer, two way
- Additional circuit
- Boom and stick lines
- High-pressure line
- Medium-pressure line
- Cat quick coupler line – high- and medium-pressure capable
- Quick coupler for high pressure
- Tool control system

CAB

- Cab hatch emergency exit
- Seat, high-back air suspension with heater and cooling
- Seat, high-back air suspension with heater
- Sunscreen
- Windshield wiper, lower with washer
- AM/FM radio
- Air pre-filter
- Travel alarm
- Left foot switch
- Left pedal
- Straight travel pedal
- Ashtray

UNDERCARRIAGE

- Long undercarriage:
 - 700 mm (28") triple grouser shoes
 - 800 mm (32") triple grouser shoes
 - 850 mm (34") triple grouser shoes
- Guard, full length for long undercarriage
- Guard, heavy-duty bottom, 4 mm (0.16"), without swivel guard and travel motor protection
- Center track guiding guard
- Segmented (3 piece) track guiding guard
- Heavy-duty travel motor protection

COUNTERWEIGHT

- 6.0 mt (6.6 t)
- 7.0 mt (7.7 t)

FRONT LINKAGE

- Bucket linkage
 - DB family with lifting eye
 - TB family with lifting eye
- Extreme Service
 - 6.5 m (21'4") reach boom with left- and right-side light
 - 3.9 m (12'10") stick
 - 3.2 m (10'6") stick
- Heavy Duty
 - 6.5 m (21'4") reach boom with left- and right-side light
 - R3.9DB (12'10") stick
 - R3.2DB (10'6") stick
- Mass boom
 - 6.18 m (20'3") with left- and right-side light
 - M2.55TB (8'4") stick

LIGHTS

- Working lights, cab mounted with time delay
- HID lights, cab mounted with time delay

SECURITY

- FOGS, bolt-on
- Guard, cab front, mesh
- Guard, vandalism
- Cat MSS (anti-theft device)
- Rubber bumper

TECHNOLOGY

- Cat Grade Control Depth and Slope
- Product Link

For more complete information on Cat products, dealer services, and industry solutions, visit us on the web at www.cat.com

AEHQ7156 (05-2014)
(North America)

© 2014 Caterpillar
All rights reserved

Materials and specifications are subject to change without notice. Featured machines in photos may include additional equipment. See your Cat dealer for available options.

CAT, CATERPILLAR, SAFETY.CAT.COM, their respective logos, "Caterpillar Yellow" and the "Power Edge" trade dress, as well as corporate and product identity used herein, are trademarks of Caterpillar and may not be used without permission.

VisionLink is a trademark of Trimble Navigation Limited, registered in the United States and in other countries.

