



























































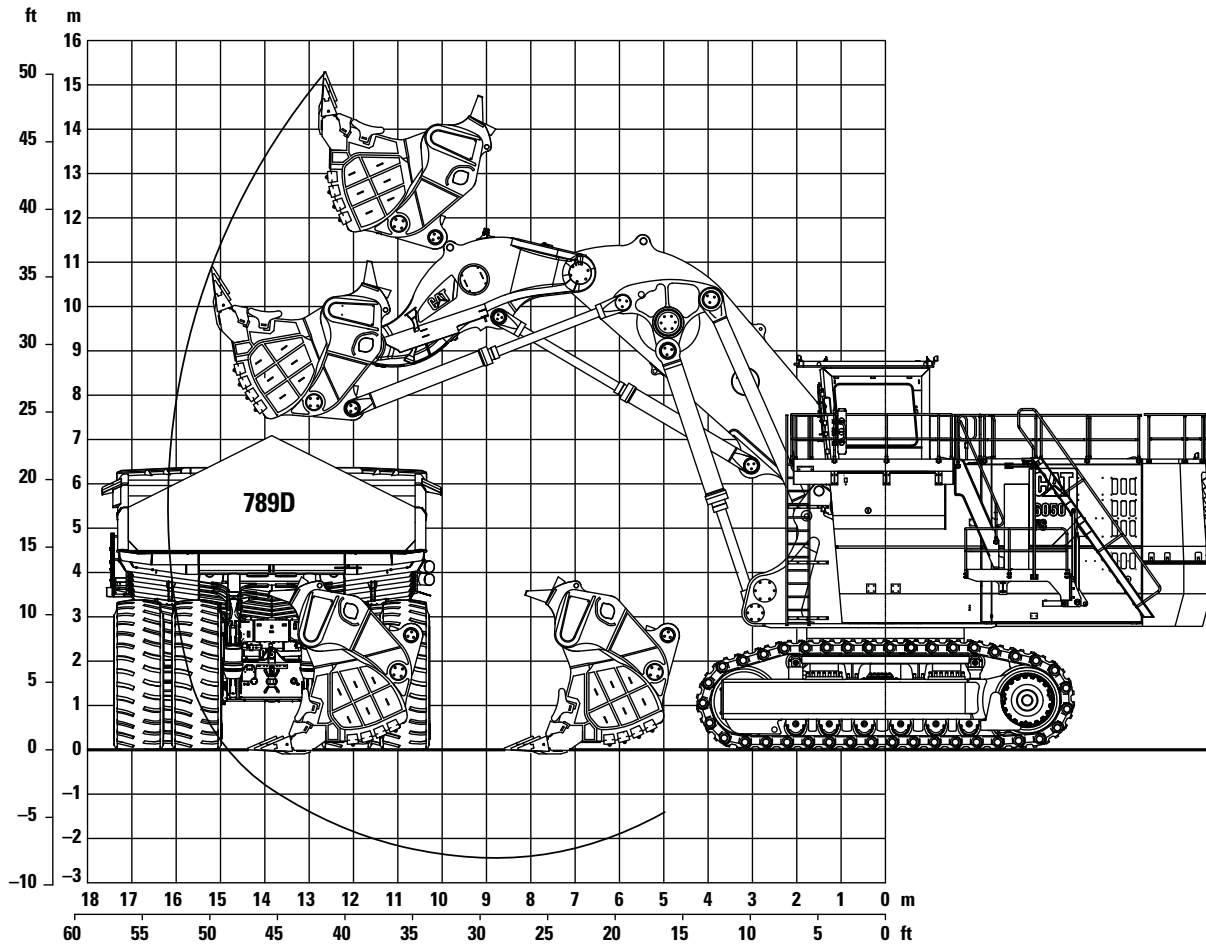




# 6050/6050 FS Hydraulic Shovel Specifications

## Working Range – TriPower Face Shovel Attachment (FS)

All dimensions are approximate.



<b>Boom</b>	<b>8.0 m</b>	<b>26 ft 2 in</b>	<b>Working Range</b>	
<b>Stick</b>	<b>5.1 m</b>	<b>16 ft 9 in</b>	Maximum digging height	15.3 m 50 ft 2 in
<b>Digging Forces</b>			Maximum digging reach	16.2 m 53 ft 2 in
Maximum crowd force	1930 kN	433,730 lbf	Maximum digging depth	2.4 m 7 ft 10 in
Maximum crowd force at ground level	1650 kN	370,800 lbf	Maximum dumping height	11.8 m 38 ft 9 in
Maximum breakout force	1530 kN	343,840 lbf	Crowd distance on level	5.8 m 19 ft

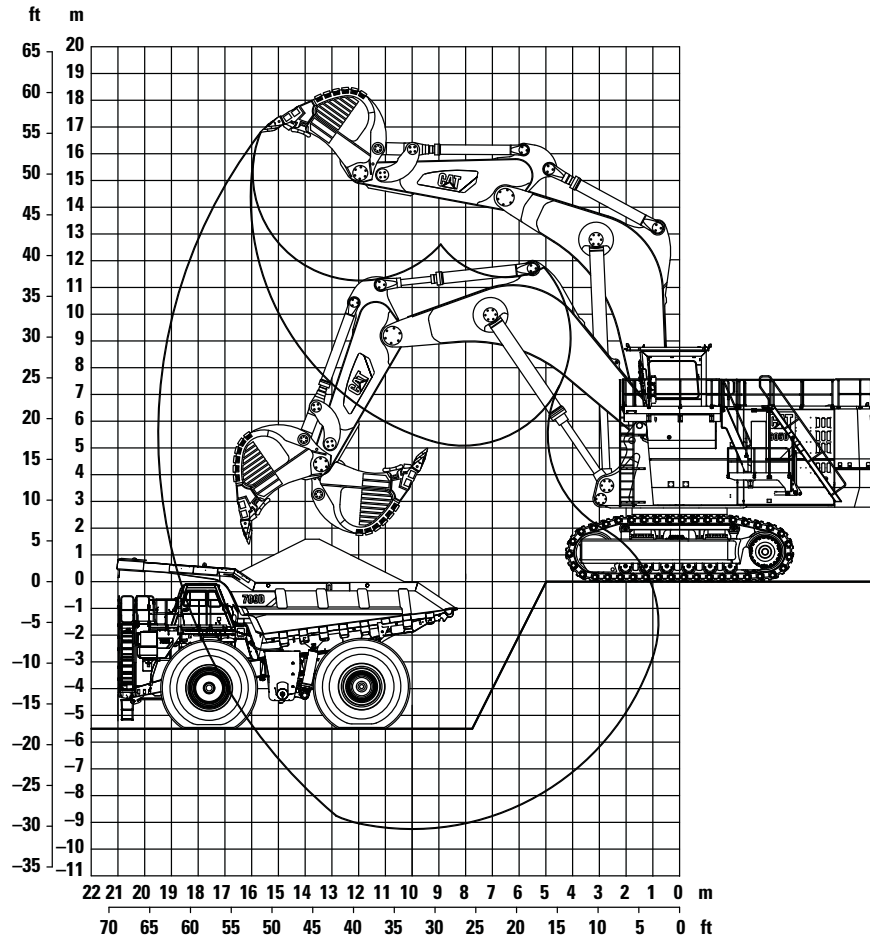
### Face Shovels

Type	Iron Ore Shovel		Heavy Rock Shovel		Heavy Rock Shovel		Standard Rock Shovel		Light Rock Shovel	
Capacity heaped 1:1	21.0 m <sup>3</sup>	27.5 yd <sup>3</sup>	24.5 m <sup>3</sup>	32.0 yd <sup>3</sup>	26.5 m <sup>3</sup>	34.7 yd <sup>3</sup>	30.1 m <sup>3</sup>	39.4 yd <sup>3</sup>	32.3 m <sup>3</sup>	42.2 yd <sup>3</sup>
<b>Capacity heaped 2:1</b>	<b>18.0 m<sup>3</sup></b>	<b>23.5 yd<sup>3</sup></b>	<b>21.0 m<sup>3</sup></b>	<b>27.5 yd<sup>3</sup></b>	<b>23.0 m<sup>3</sup></b>	<b>30.1 yd<sup>3</sup></b>	<b>26.0 m<sup>3</sup></b>	<b>34.0 yd<sup>3</sup></b>	<b>28.0 m<sup>3</sup></b>	<b>36.6 yd<sup>3</sup></b>
Total width	4800 mm	15 ft 9 in	4800 mm	15 ft 9 in	4800 mm	15 ft 9 in	4800 mm	15 ft 9 in	4800 mm	15 ft 9 in
Inner width	4300 mm	14 ft 1 in	4300 mm	14 ft 1 in	4300 mm	14 ft 1 in	4300 mm	14 ft 1 in	4300 mm	14 ft 1 in
Opening width	2250 mm	8 ft 2 in	2500 mm	8 ft 2 in	2500 mm	8 ft 2 in	2500 mm	8 ft 2 in	2500 mm	8 ft 2 in
Number of teeth	6		6		6		6		6	
Weight including wear package	40 400 kg	89,070 lb	42 400 kg	93,480 lb	41 800 kg	92,150 lb	42 900 kg	94,580 lb	43 100 kg	95,020 lb
Maximum material density (loose)	2.6 t/m <sup>3</sup>	4,380 lb/yd <sup>3</sup>	2.2 t/m <sup>3</sup>	3,710 lb/yd <sup>3</sup>	2.0 t/m <sup>3</sup>	3,370 lb/yd <sup>3</sup>	1.8 t/m <sup>3</sup>	3,030 lb/yd <sup>3</sup>	1.65 t/m <sup>3</sup>	2,780 lb/yd <sup>3</sup>

# 6050/6050 FS Hydraulic Shovel Specifications

## Working Range – Backhoe Attachment (BH)

All dimensions are approximate.



<b>Boom</b>	<b>10.5 m</b>	<b>34 ft 5 in</b>
<b>Stick</b>	<b>5.5 m</b>	<b>18 ft 1 in</b>
<b>Digging Forces</b>		
Maximum tearout force	1100 kN	247,200 lbf
Maximum breakout force	1210 kN	271,920 lbf

<b>Working Range</b>			
Maximum digging depth	9.2 m	30 ft 2 in	
Maximum digging reach	19.5 m	64 ft 0 in	
Maximum digging height	16.8 m	55 ft 1 in	

### Backhoes

Type	Heavy Rock Bucket		Standard Rock Bucket	
<b>Capacity heaped 1:1</b>	<b>25.0 m<sup>3</sup></b>	<b>32.7 yd<sup>3</sup></b>	<b>28.0 m<sup>3</sup></b>	<b>36.6 yd<sup>3</sup></b>
Capacity heaped 2:1	22.2 m <sup>3</sup>	29.0 yd <sup>3</sup>	25.0 m <sup>3</sup>	32.7 yd <sup>3</sup>
Capacity struck	19.5 m <sup>3</sup>	25.5 yd <sup>3</sup>	21.7 m <sup>3</sup>	28.4 yd <sup>3</sup>
Total width	4580 mm	15 ft 0 in	4440 mm	14 ft 7 in
Inner width	4035 mm	13 ft 3 in	4040 mm	13 ft 3 in
Number of teeth	6		6	
Weight including wear package	30 100 kg	66,360 lb	32 300 kg	72,210 lb
Maximum material density (loose)	2.0 t/m <sup>3</sup>	3,370 lb/yd <sup>3</sup>	1.8 t/m <sup>3</sup>	3,030 lb/yd <sup>3</sup>

## Optional Equipment

Optional equipment may vary. Consult your Cat dealer for details.

### GENERAL

- Custom paint

### SUPERSTRUCTURE

- Hydraulic service crane on superstructure with auxiliary engine
- Mesabi radiators instead of standard radiators
- Oil change interval extension for engine oil up to 1,000 hours
- Oil change interval extension for engine oil with oil burn system

- Folding access stairway, stairway angle approximately 45°
- Two round containers for two standard 200 L (53 gal) barrels (instead of 1000 L (264 gal) grease container)
- Filling of round containers via service station
- Various cold-weather options

### CAB

- Dual (redundancy) heating ventilating and air conditioning system
- Cab heating
- Additional instrumentation
- Camera monitoring system

### UNDERCARRIAGE

- Track pad width 1600 mm (5 ft 3 in) or 1800 mm (5 ft 11 in)
- Cover plate under carbody (belly plate)

Additional optional equipment available on request.

For more complete information on Cat products, dealer services, and industry solutions, visit us on the web at [www.cat.com](http://www.cat.com)

AEHQ7190 (04-2014)

© 2014 Caterpillar  
All rights reserved

Materials and specifications are subject to change without notice. Featured machines in photos may include additional equipment. See your Cat dealer for available options.

CAT, CATERPILLAR, SAFETY.CAT.COM, their respective logos, "Caterpillar Yellow" and the "Power Edge" trade dress, as well as corporate and product identity used herein, are trademarks of Caterpillar and may not be used without permission.

