



# Cat<sup>®</sup> TH337C

## TELEHANDLER

### Specifications

#### Engine

|                |                               |
|----------------|-------------------------------|
| Model          |                               |
| Standard       | Cat <sup>®</sup> C4.4 ACERT™* |
| Option 1       | Cat C4.4 ACERT*               |
| Gross Power    |                               |
| Standard       | 74.5 kW/101 hp                |
| Option 1       | 93.1 kW/126 hp                |
| Maximum Torque |                               |
| Standard       | 410 N·m/1,400 rpm             |
| Option 1       | 496 N·m/1,400 rpm             |
| Bore           | 105 mm                        |
| Stroke         | 127 mm                        |
| Displacement   | 4.4 L                         |

- All engine horsepower (hp) are metric.

\*Meets EU Stage IIIA and U.S. EPA Tier 3 equivalent emission standards.

#### Weights

|  |         |
|--|---------|
| Operating Weight with Carriage & Forks | 8030 kg |
|--|---------|

#### Operating Specifications

|                                   |         |
|-----------------------------------|---------|
| Rated Load Capacity               | 3300 kg |
| Maximum Lift Height               | 7300 mm |
| Maximum Forward Reach             | 3763 mm |
| Top Travel Speed                  | 40 km/h |
| Load at Maximum Height            | 2000 kg |
| Load at Maximum Reach             | 1000 kg |
| Outside Turning Radius Over Tires | 3750 mm |
| Outside Turning Radius Over Forks | 4740 mm |

#### Hydraulic System

|                            |  |
|----------------------------|--|
| Maximum System Pressure    | 250 bar  |
| Maximum Pump Flow          | 150 L/min  |
| Pump Type                  | Variable Displacement<br>Load Sensing Axial<br>Piston Pump |
| Auxiliary Hydraulic Supply |  |
| Intermittent               | 80 L/min   |
| Continuous                 | 60 L/min   |

#### Service Refill Capacities

|                |       |
|----------------|-------|
| Fuel Tank      | 150 L |
| Hydraulic Tank | 90 L  |

#### Tires

|          |                 |
|----------|-----------------|
| Standard | 15.5/80-24 16PR |
|----------|-----------------|

#### Brakes

|                |                              |
|----------------|------------------------------|
| Service Brakes | Servo Assisted on Front Axle |
| Parking Brakes | Mechanical on Front Axle     |

#### Transmission Speeds

|         | C4.4 ACERT<br>Engine Only | C4.4 ACERT<br>Engine Only |
|---------|---------------------------|---------------------------|
| Forward |                           |                           |
| 1       | 6.8 km/h                  | 6.6 km/h                  |
| 2       | 13.3 km/h                 | 10 km/h                   |
| 3       | 19.8 km/h                 | 13 km/h                   |
| 4       | 30.5 km/h                 | 19.3 km/h                 |
| 5       | —                         | 29.6 km/h                 |
| 6       | —                         | 40 km/h                   |
| Reverse |                           |                           |
| 1       | 6.8 km/h                  | 6.6 km/h                  |
| 2       | 13.3 km/h                 | 13 km/h                   |
| 3       | 30.5 km/h                 | 29.6 km/h                 |

#### Boom Performance

|                                   |              |
|-----------------------------------|--------------|
| Boom Up                           | 7.6 Seconds  |
| Boom Down                         | 5.9 Seconds  |
| Tele In                           | 5.3 Seconds  |
| Tele Out                          | 6.4 Seconds  |
| Crowd Forward (dump)              | 2.4 Seconds  |
| Crowd Backward                    | 2.8 Seconds  |
| Combined                          |              |
| Up and Out                        | 12.5 Seconds |
| Down and In                       | 7.6 Seconds  |
| Drawbar Pull                      |              |
| Standard                          | 78 kN        |
| Option 1                          | 85 kN        |
| Bucket Breakout Force to ISO 8313 | 65 kN        |
| Boom Breakout Force               | 42 kN        |

#### Sound

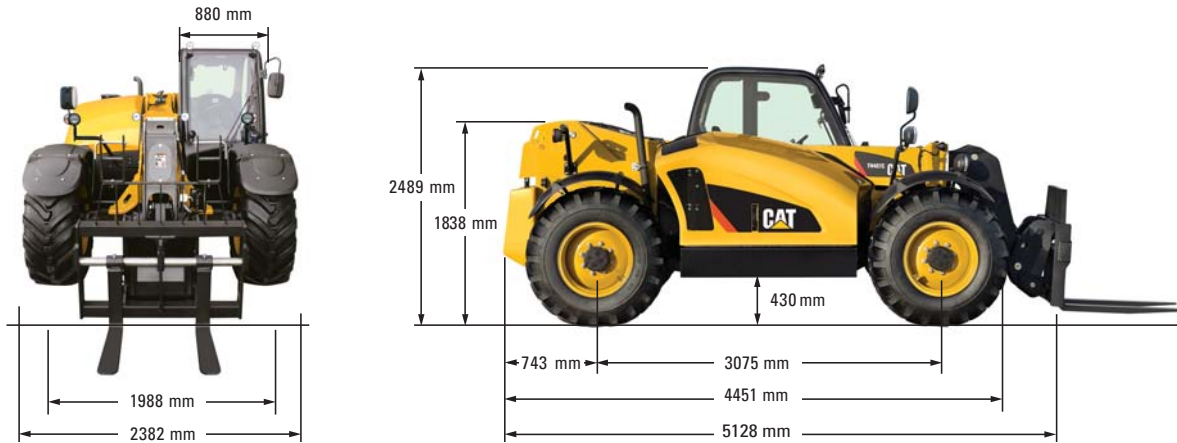
|                |  |
|----------------|--|
| Operator Sound | 78 dB(A)                                   |
| Exterior Sound | 74.5 kW – 106 dB(A)<br>93.1 kW – 107 dB(A) |



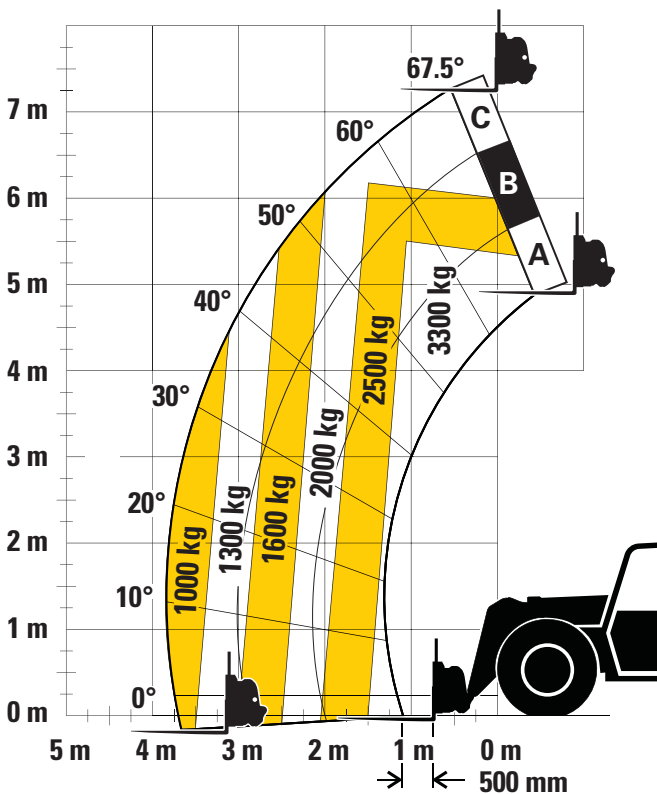
# TH337C Telehandler

## Dimensions

All dimensions are approximate.



## Load Chart and Dimensions



### IMPORTANT

Rated lift capacities shown are with machine equipped with carriage and pallet forks. The machine must be level on a firm surface with undamaged, properly inflated tires. Machine specifications and stability are based on rated lift capacities at specific boom angles and boom lengths. (If specifications are critical, the proposed application should be discussed with your dealer.)

DO NOT exceed rated lift capacity loads, as unstable and dangerous machine conditions will result.

DO NOT tip the machine forward to determine the allowable load.

*Due to continuous product improvements, machine specifications and/or equipment changes may be made without prior notification.*

For more complete information on Cat products, dealer services, and industry solutions, visit us on the web at [www.cat.com](http://www.cat.com)

© 2016 Caterpillar  
All rights reserved

Materials and specifications are subject to change without notice. Featured machines in photos may include additional equipment. See your Cat dealer for available options.

CAT, CATERPILLAR, SAFETY.CAT.COM, their respective logos, "Caterpillar Yellow" and the "Power Edge" trade dress, as well as corporate and product identity used herein, are trademarks of Caterpillar and may not be used without permission.

AEHQ7020-01 (03-2016)  
Replaces AEHQ7020

