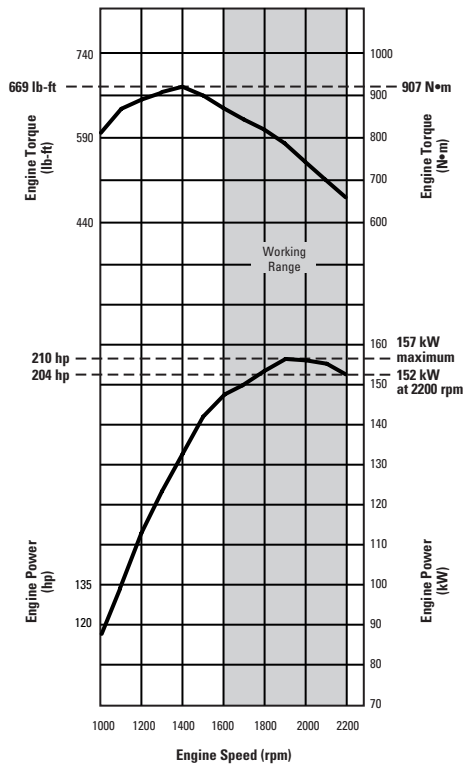


IT62G Series II Integrated Toolcarrier



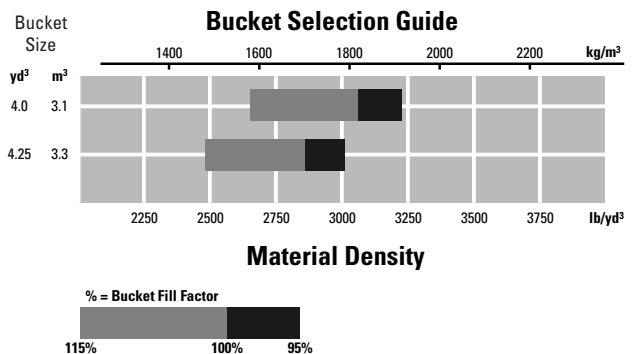
IT62G Series II Integrated Toolcarrier

Operating Specifications

		Material Handling bucket
		Bolt-on Edge
Rated capacity	m ³	3.25
	yd ³	4.25
Struck capacity	m ³	2.6
	yd ³	3.4
Width	mm	2885
	ft/in	9' 6"
Dump clearance at full lift and 45° discharge	mm	2840
	ft/in	9' 4"
Reach at full lift and 45° discharge	mm	1227
	ft/in	4' 0"
Reach at 45° discharge and 2130 mm (7 ft 0 in) clearance	mm	1750
	ft/in	5' 9"
Reach with lift arms horizontal and bucket level	mm	2767
	ft/in	9' 1"
Digging depth	mm	71
	in	3"
Overall length	mm	8498
	ft/in	27' 11"
Overall height with bucket at full raise	mm	5579
	ft/in	18' 4"
Loader clearance circle with bucket in carry position	m	14 174
	ft/in	46' 6"
Static tipping load, straight*	kg	12 592
	lb	27,761
Static tipping load, articulated at full 40° turn*	kg	10 204
	lb	22,496
Breakout force	kN	148.9
	lb	33,474
Operating weight*	kg	18 556
	lb	40,909

Specifications and ratings conform to all applicable standards recommended by the Society of Automotive Engineers. SAE Standards J732c govern loader ratings.

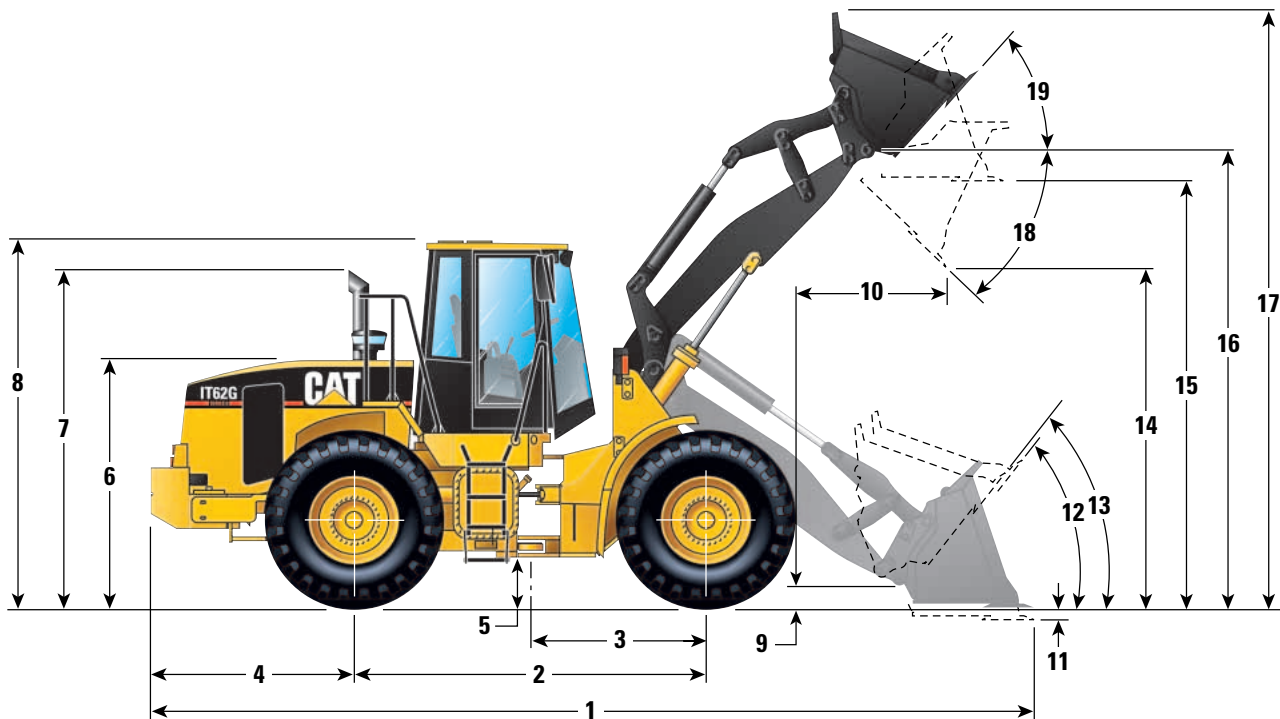
* Static tipping load and operating weight shown are based on standard machine configuration with 23.5-R25 XHA (L-3) tires, air conditioning, crank case guard, power train guard, full fuel tank, lubricants and operator.



IT62G Series II Integrated Toolcarrier

Dimensions – Material Handling Bucket

All dimensions are approximate.



1	8498 mm	27' 11"	8	3401 mm	11' 2"	14	2840 mm	9' 4"
2	3350 mm	11' 0"	9	315 mm	1' 0"	15	3759 mm	12' 4"
3	1675 mm	5' 6"	10	1227 mm	4' 0"	16	4123 mm	13' 6"
4	2094 mm	6' 10"	11	71 mm	3"	17	5579 mm	18' 4"
5	412 mm	1' 4"	12	44°		18	49°	
6	2282 mm	7' 6"	13	52°		19	58°	
7	3149 mm	10' 4"						

NOTE: Dimensions listed are for machines equipped with 23.5-R25 XHA (L-3) tires, 4.25 yd³ MH bucket.

*See Operating Specifications on page 19.

Tires

Tread width for all tires is 2140 mm (84")

		Width over tires		Change in vertical dimensions		Change in operating weight without ballast		Change in static tipping load – straight	
		mm	inches	mm	inches	kg	lb	kg	lb
23.5-25, (L-3)	Firestone	2849	112.2	-27	-1.1	-372	-820	-274	-604
23.5-25, (L-3)	General	2811	110.7	-42	-1.7	-300	-661	-221	-487
23.5-25, (L-3)	Goodyear	2755	108.5	-12	-0.5	-236	-520	-174	-384
23.5-25 (L-2)	Goodyear	2760	109	-20	-0.8	-408	-899	-300	-661
23.5-R25 (L-2)	Michelin XTLA	2888	113.7	-62	-2.4	-100	-220	-63	-139
23.5-R25 (L-3)	Michelin XHA	2892	113.9	0	0	0	0	0	0
23.5-R25 (L-3)	Goodyear GP2B	2752	108.3	-22	-0.9	-76	-168	-60	-132

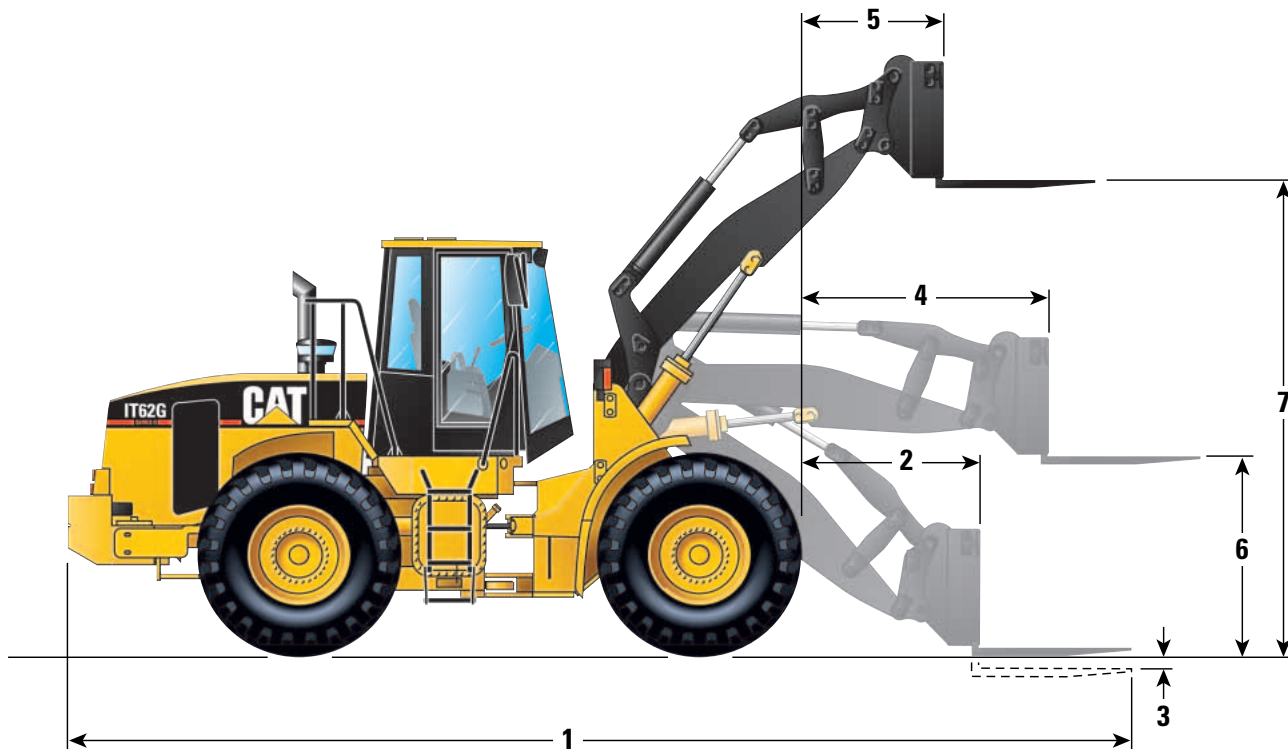
NOTE: Tire options include tires and rims.

In certain applications (such as load-and-carry work) the loader's productive capabilities might exceed the tires' tonnes-km/h (ton-mph) capabilities. Caterpillar recommends consulting a tire supplier to evaluate all conditions before selecting a tire model.

IT62G Series II Integrated Toolcarrier

Dimensions – Pallet Fork

All dimensions are approximate.



1	9212 mm	29' 11"	5	1090 mm	3' 7"
2	1407 mm	4' 7"	6	1757 mm	5' 9"
3	14 mm	1.0"	7	3817 mm	12' 6"
4	1948 mm	6' 5"			

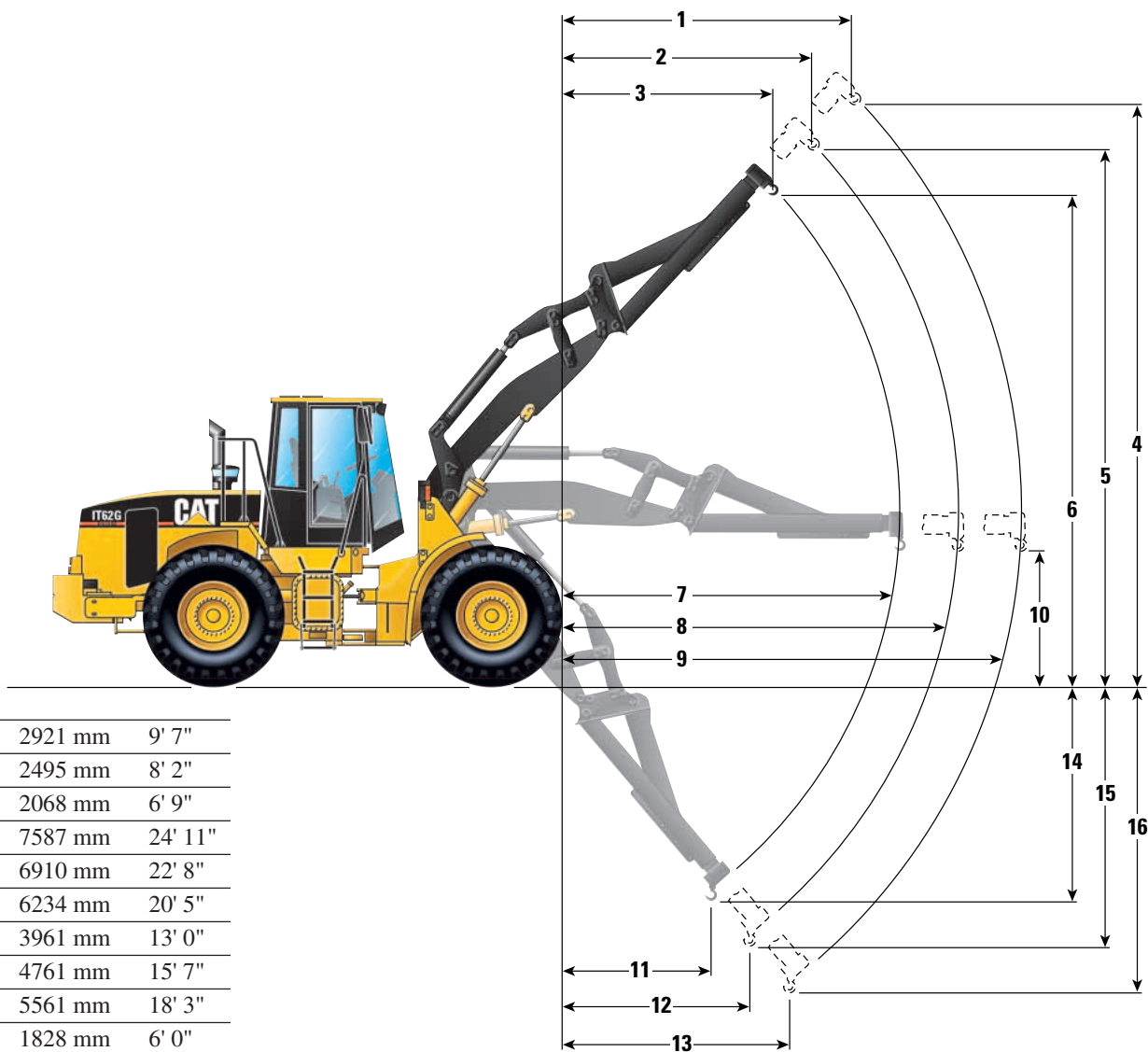
Fork tine length	1524 mm	60"
Reach with arms horizontal and forks level	3472 mm	11' 5"
Static tipping load with arms and forks level		
Straight	9293 kg	20,488 lb
Full 40° turn	7749 kg	17,084 lb
Operating weight	18 312 kg	40,371 lb

NOTE: Dimensions, static tipping load and operating weight are based on standard machine configuration with *23.5-R25 XHA (L-3) Michelin tires (741 mm static tire radius) full fuel tank, coolant, lubricants and operator. Machine stability and operating weight are affected by tire size and other attachments.

IT62G Series II Integrated Toolcarrier

Dimensions – Material Handling Arm

All dimensions are approximate.



1	2921 mm	9' 7"
2	2495 mm	8' 2"
3	2068 mm	6' 9"
4	7587 mm	24' 11"
5	6910 mm	22' 8"
6	6234 mm	20' 5"
7	3961 mm	13' 0"
8	4761 mm	15' 7"
9	5561 mm	18' 3"
10	1828 mm	6' 0"
11	2187 mm	7' 2"
12	2688 mm	8' 10"
13	3190 mm	10' 6"
14	1915 mm	6' 3"
15	2539 mm	8' 4"
16	3163 mm	10' 5"

Handling arm position	Retracted		Mid-position		Extended	
	kg	lb	kg	lb	kg	lb
Static tipping load						
Straight	7266	16,019	6236	13,748	5457	12,031
Full 40° turn	6198	13,664	5331	11,753	4672	10,300
Operating weight	17 777	39,192	17 777	39,192	17 777	39,192

NOTE: Dimensions, static tipping load and operating weight are based on standard machine configuration with 23.5-R25 XHA (L-3) Michelin tires, full fuel tank, coolant, lubricants, and operator. Machine stability and operating weight are affected by tire size, tire ballast and other attachments.