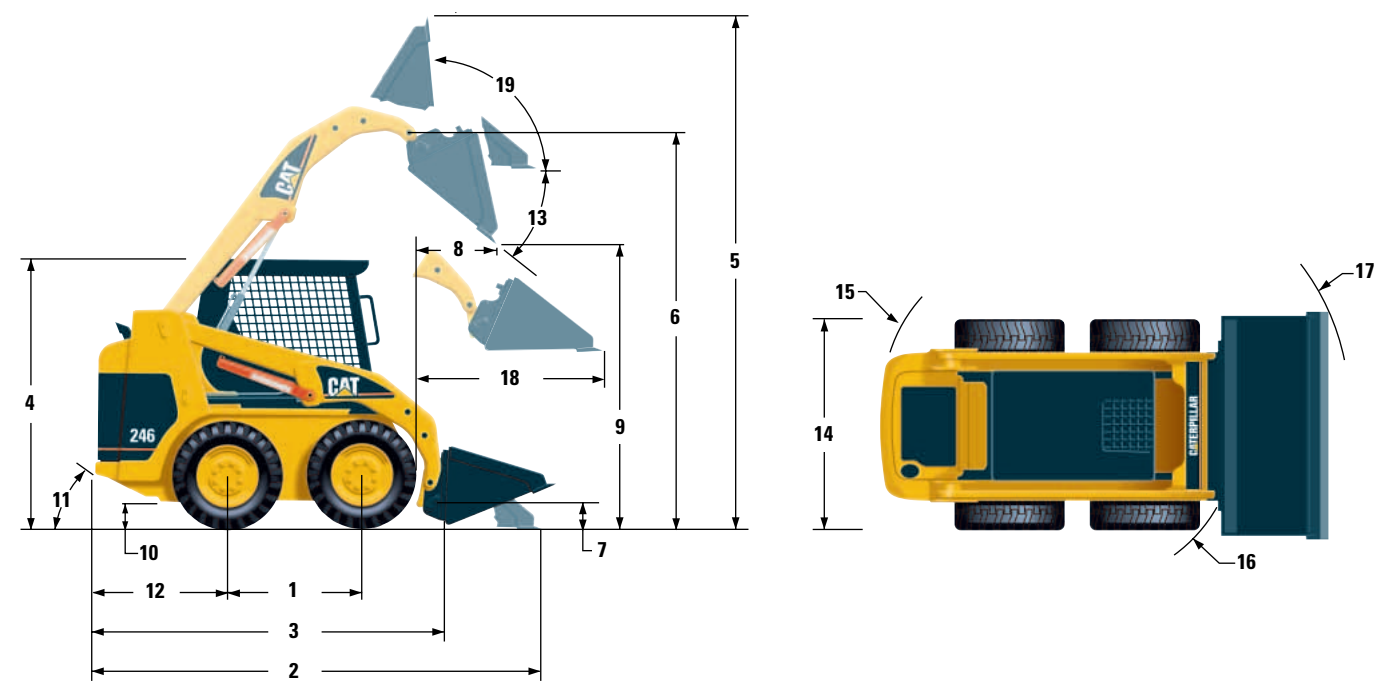


# 246 Skid Steer Loader

## Dimensions (approximate)

Dimensions shown are based on standard machine equipped with optional 12 x 16.5 10 PR tires and 1676 mm (66 in) Dirt Bucket. The specifications for the Cat 246 are static and conform to SAE J732 JUN92, SAE J818 MAY87 and ISO 5998: 1986.



1	Wheelbase	1134 mm	44.6 in
2	Length w/Bucket on ground	3515 mm	138.4 in
3	Length w/o Bucket	2800 mm	110.2 in
4	Height to top of Cab	2092 mm	82.3 in
5	Max Overall Height	3965 mm	156 in
6	Hinge Pin Height at max lift	3099 mm	122 in
7	Hinge Pin Height at carry position	257 mm	10 in
8	Reach at max lift and dump @ 45°	541 mm	21.3 in
9	Clearance at max lift and dump	2398 mm	94.4 in
10	Ground Clearance	235 mm	9.3 in

11	Departure Angle	28°	
12	Bumper Overhang behind rear axle	1038 mm	41 in
13	Maximum Dump Angle	40°	
14	Machine Width over tires	1676 mm 1829 mm	66 in 72 in
15	Turning Radius from center — left	1623 mm	64 in
16	Turning Radius from center — right	1318 mm	52 in
17	Turning Radius from center — full	2097 mm	82.6 in
18	Reach w/Level Arms and Bucket	1357 mm	53.4 in
19	Rack Back Angle at max height	97°	