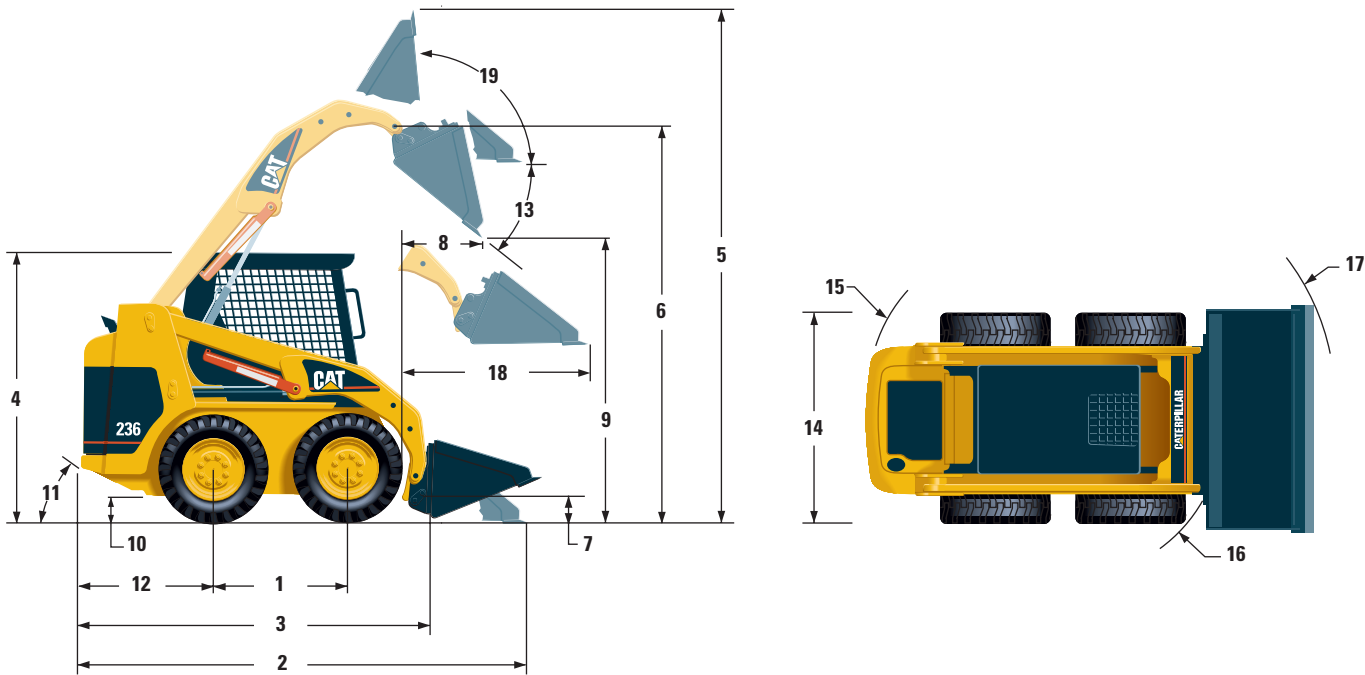


236 Skid Steer Loader

Dimensions (approximate)

Dimensions shown are based on standard machine equipped with optional 12 x 16.5 10 PR tires and 1676 mm (66 in) dirt bucket. The specifications for the Cat 236 are static and conform to SAE J732 JUN92, SAE J818 MAY87 and ISO 5998: 1986.



1	Wheelbase	1134 mm	45 in
2	Length w/Bucket on ground	3515 mm	138 in
3	Length w/o Bucket	2800 mm	110 in
4	Height to top of Cab	2092 mm	82 in
5	Max Overall Height	3965 mm	156 in
6	Hinge Pin Height at max lift	3099 mm	122 in
7	Hinge Pin Height at carry position	257 mm	10 in
8	Reach at max lift and dump @ 45°	541 mm	21 in
9	Clearance at max lift and dump	2398 mm	94 in
10	Ground Clearance	235 mm	9 in

11	Departure Angle	28°
12	Bumper Overhang behind rear axle	1038 mm 41 in
13	Maximum Dump Angle	40°
14	Machine Width over tires	1676 mm 72 in
15	Turning Radius from center — left	1623 mm 64 in
16	Turning Radius from center — right	1318 mm 52 in
17	Turning Radius from center — full	2097 mm 83 in
18	New Reach w/Level Arms and Bucket	1357 mm 53 in
19	Rack Back Angle at max height	97°