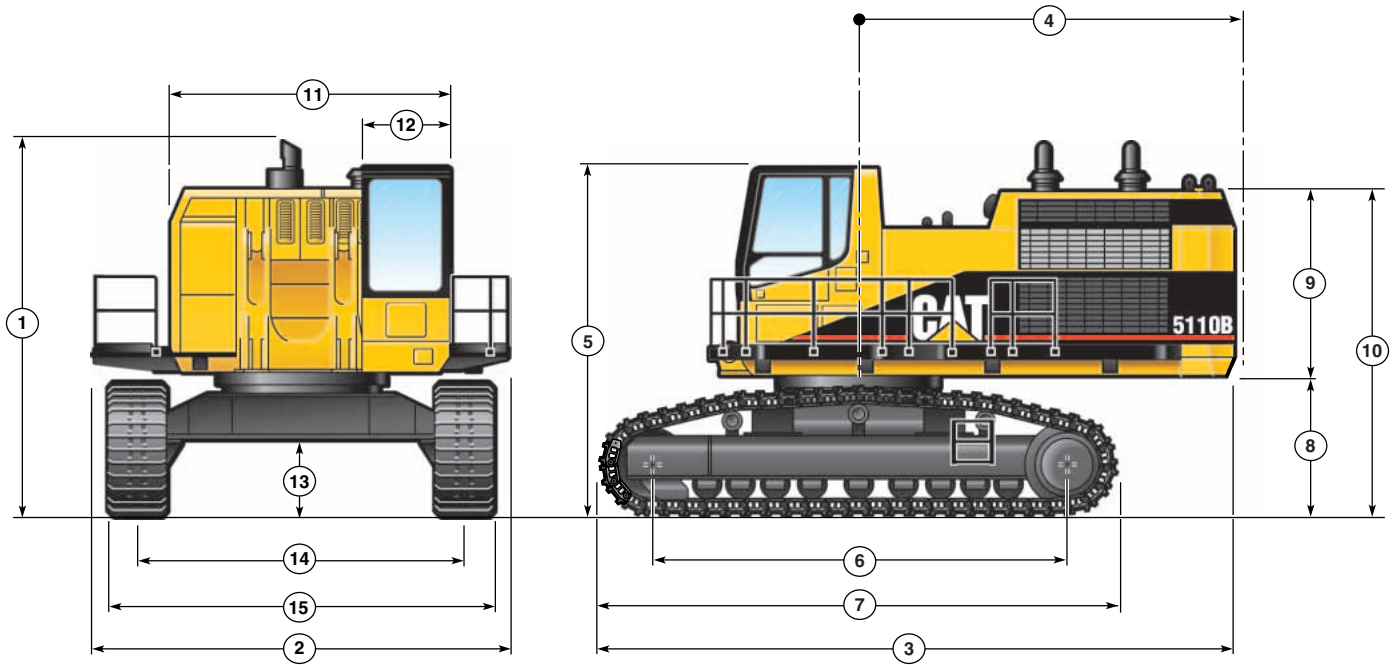


5110B/5110B L Hydraulic Excavator

Dimensions

All dimensions are approximate.



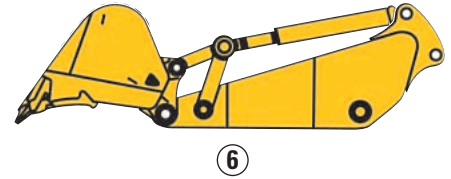
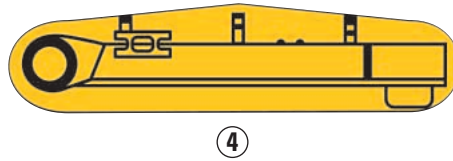
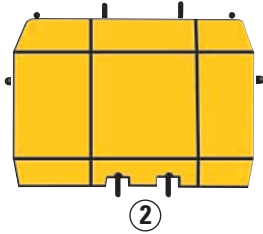
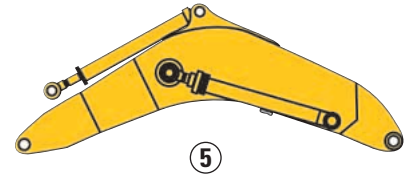
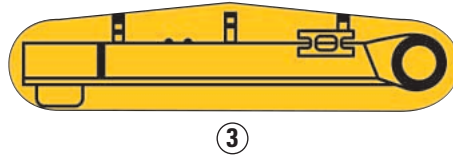
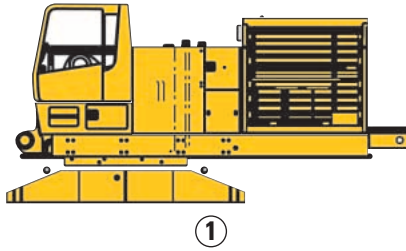
1	Overall Height	4806 mm	15.8 ft
2	Overall Width	5460 mm	17.9 ft
3	Overall Length – Std.	8552 mm	28.1 ft
	Overall Length – Long	8792 mm	28.9 ft
4	Tail Swing Radius	5120 mm	16.8 ft
5	Height to Top of Cab	4615 mm	15.1 ft
6	Track Length on Ground – Std.	5452 mm	17.9 ft
	Track Length on Ground – Long	5850 mm	19.2 ft
7	Track Length – Std.	6864 mm	22.5 ft
	Track Length – Long	7264 mm	23.8 ft

8	Counterweight Clearance	1890 mm	6.2 ft
9	Counterweight Height	2410 mm	7.9 ft
10	Height to Top of Counterweight	4300 mm	14.1 ft
11	Upper Structure Width	3500 mm	11.5 ft
12	Cab Width	993 mm	3.25 ft
13	Ground Clearance	1052 mm	3.5 ft
14	Track Gauge Width	4100 mm	13.4 ft
15	Width to Outside of Tracks	4800 mm	15.75 ft

Equipped with 700 mm (28 in) shoes.

5110B/5110B L Hydraulic Excavator

Shipping Module Dimensions and Weights



Modules		Length		Width		Height		Weight	
		mm	in	mm	in	mm	in	kg	lb
Standard Undercarriage (ME) Configuration									
1	Chassis, Carbody and Cab	7070	278	3500	138	3560	140	42 700	94,200
2	Counterweight	900	35	3770	149	2630	103	16 800	37,000
3	Track Roller Frames ¹ – Std. (R)	6710	264	1250	49	1800	71	19 590	43,840
4	Track Roller Frames ¹ – Std. (L)	6710	264	1250	49	1800	71	19 990	43,840
5	Boom Assembly – 7.6 m	8020	316	1480	58	3080	121	16 500	36,300
	Handrail Skid	3990	157	1120	44	2290	90	1340	3,000
	Parts Box	2240	88	990	39	1090	43	1550	3,400
6	Stick and Bucket Assembly ²	7650	301	2620	103	2160	85	15 200	33,600
	Stick – 3.4 m	5060	199	1000	39	2140	84	8200	18,000
	Bucket – 7.6 m ³	3000	118	2620	103	2460	97	7600	16,800

Long Undercarriage (GP) Configuration

1	Chassis, Carbody and Cab ³	7070	278	3500	138	3560	140	43 300	95,390
2	Counterweight	900	35	3770	149	2630	103	16 800	37,000
3	Track Roller Frames ⁴ – Long (R)	7110	280	1450	57	1800	71	22 724	50,061
4	Track Roller Frames ⁴ – Long (L)	7110	280	1450	57	1800	71	22 724	50,061
5	Boom Assembly – 9.2 m	9626	379	1540	61	3500	138	16 565	36,493
	Handrail Skid	3990	157	1120	44	2290	90	1340	3,000
	Parts Box	2240	88	990	39	1090	43	1550	3,400
6	Stick and Bucket Assembly ²	7688	303	2612	103	1977	78	12 866	28,344
	Stick – 3.6 m	4278	168	1014	40	1977	78	7550	16,633
	Bucket – 6.0 m ³	2790	110	2612	103	1905	75	5316	11,711
Stick and Bucket Assembly ²	Stick – 4.5 m	8500	335	2286	90	2054	81	13 105	28,870
	Stick – 4.5 m	6240	246	1014	40	2054	81	8318	18,325
	Bucket – 5.0 m ³	2630	104	2286	90	1900	75	4787	10,546
Stick and Bucket Assembly ²	Stick – 5.5 m	9585	377	1980	78	1900	75	16 483	36,312
	Stick – 5.5 m	7175	282	1014	40	1875	74	9113	20,076
	Bucket – 4.2 m ³	2850	112	1980	78	1900	75	7370	16,236

¹ Includes 700 mm (28 in) shoes with center and end guides.

² Includes stick assembly, bucket assembly, tips (penetration).

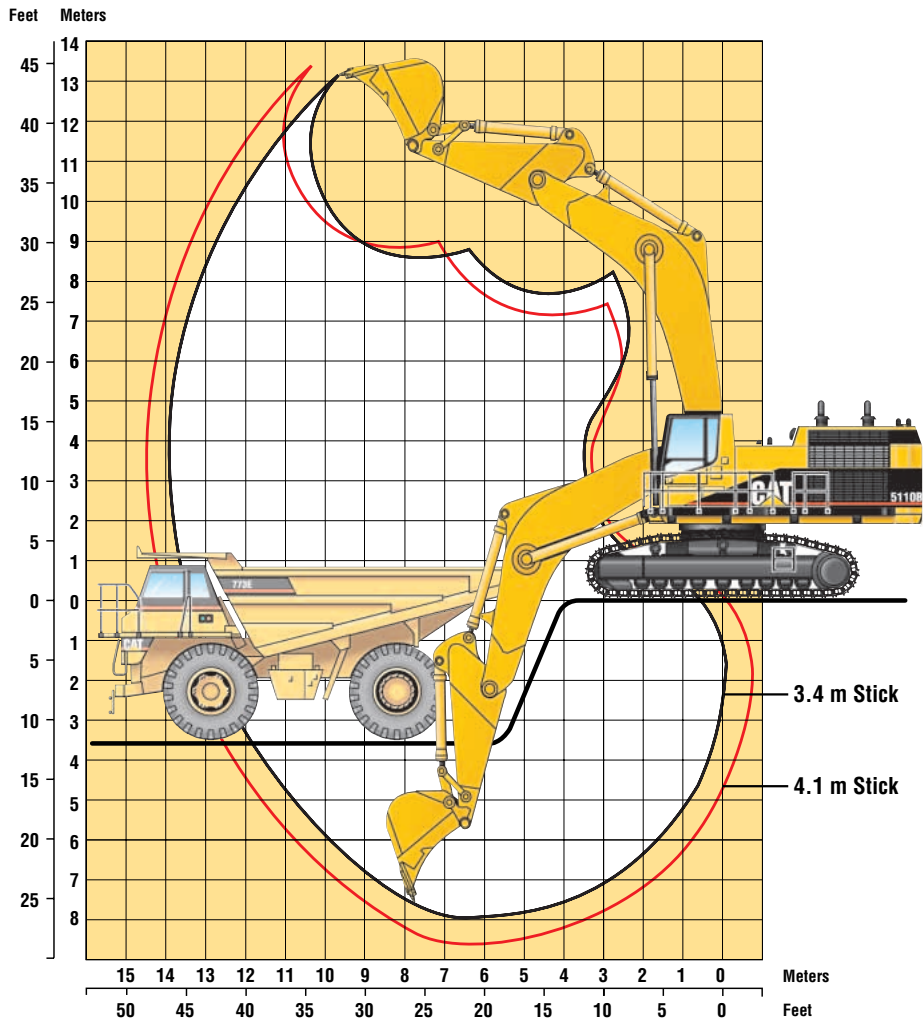
³ Includes tall cab riser and heavy-lift with anti-drift.

⁴ Includes 900 mm (35 in) shoes with center and end guides.

5110B/5110B L Hydraulic Excavator

Working Ranges

Standard Undercarriage (ME) Configuration

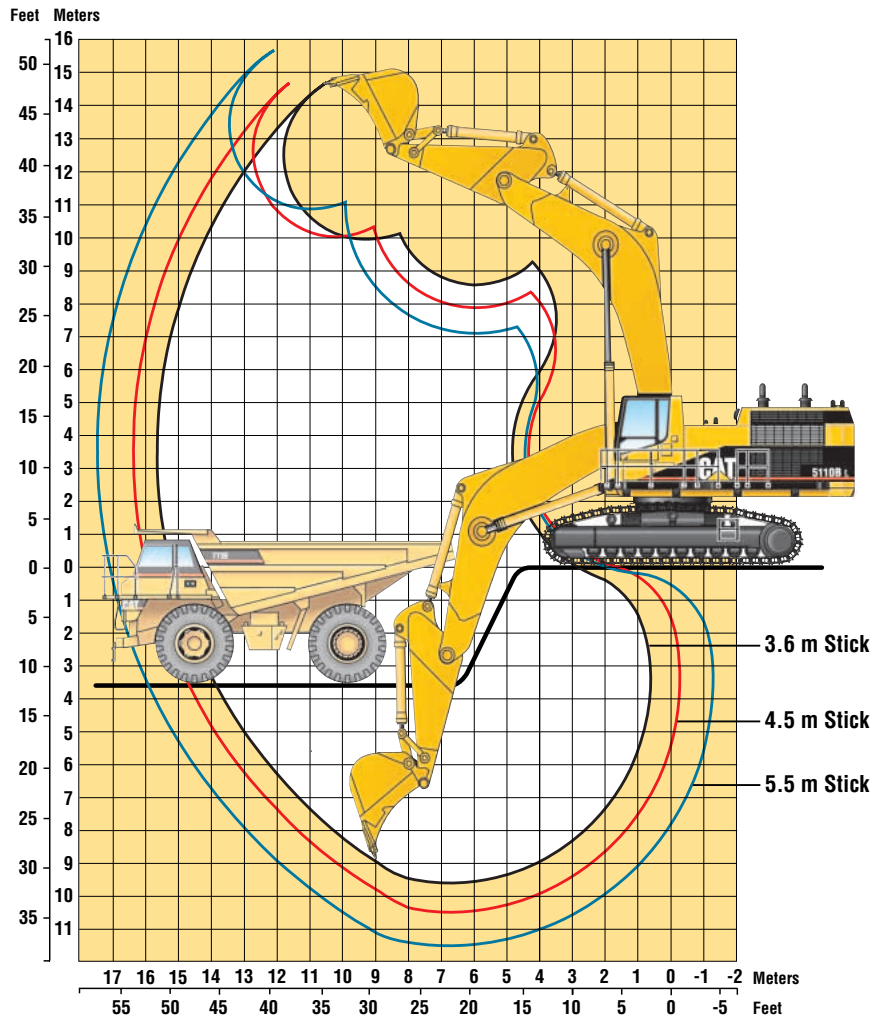


Stick Length	3.4 m (11.2 ft)	4.1 m (13.5 ft)
Boom Length	7.6 m (24.9 ft)	7.6 m (24.9 ft)
Bucket Capacity	7.6 m³ (9.9 yd³)	6.2 m³ (8.1 yd³)
Maximum Reach	13.9 m (45.7 ft)	14.6 m (47.8 ft)
Maximum Reach at Ground Level	13.5 m (44.2 ft)	14.2 m (46.6 ft)
Maximum Digging Depth	7.9 m (25.9 ft)	8.6 m (28.2 ft)
Maximum Digging Height	13.2 m (43.2 ft)	13.5 m (44.1 ft)
Maximum Dumping Height	8.6 m (28 ft)	8.8 m (28.9 ft)
Bucket Digging Force (SAE)	501 kN (112,600 lb)	501 kN (112,600 lb)
Stick Digging Force (SAE)	439 kN (98,800 lb)	395 kN (88,800 lb)
Bucket Digging Force (ISO)	586 kN (131,700 lb)	585 kN (131,500 lb)
Stick Digging Force (ISO)	458 kN (103,000 lb)	407 kN (91,500 lb)

5110B/5110B L Hydraulic Excavator

Working Ranges

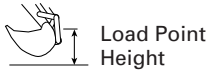
Long Undercarriage (GP) Configuration



Stick Length	3.6 m (11.8 ft)	4.5 m (14.8 ft)	5.5 m (18.0 ft)
Boom Length	9.2 m (30.2 ft)	9.2 m (30.2 ft)	9.2 m (30.2 ft)
Bucket Capacity	6.0 m ³ (7.8 yd ³)	5.0 m ³ (6.5 yd ³)	4.2 m ³ (5.5 yd ³)
Maximum Reach	15.66 m (51.4 ft)	16.39 m (53.8 ft)	17.5 m (57.4 ft)
Maximum Reach at Ground Level	15.25 m (50.0 ft)	16.0 m (52.5 ft)	17.13 m (56.2 ft)
Maximum Digging Depth	9.61 m (31.5 ft)	10.51 m (34.5 ft)	11.51 m (37.8 ft)
Maximum Digging Height	14.72 m (48.3 ft)	14.7 m (48.2 ft)	15.7 m (51.5 ft)
Maximum Dumping Height	9.95 m (32.6 ft)	10.06 m (33.0 ft)	10.89 m (35.7 ft)
Bucket Digging Force (SAE)	463 kN (104,175 lb)	463 kN (104,175 lb)	462 kN (103,950 lb)
Stick Digging Force (SAE)	424 kN (95,400 lb)	377 kN (84,825 lb)	328 kN (73,800 lb)
Bucket Digging Force (ISO)	527 kN (118,575 lb)	527 kN (118,575 lb)	526 kN (118,350 lb)
Stick Digging Force (ISO)	440 kN (99,000 lb)	391 kN (87,975 lb)	338 kN (76,050 lb)

5110B/5110B L Hydraulic Excavator

General Purpose Boom Lift Capacities



Load Point Height



Load at Maximum Reach



Load Radius Over Front



Load Radius Over Side

BOOM – 9.2 m (30.2')
STICK – 3.6 m (11.8')

BUCKET – 6.0 m³ (7.8 yd³)
SHOES – 900 mm (36")

UNDERCARRIAGE – LONG
HEAVY LIFT – ON

Diagram	4.5 m (15.0 ft)		6.0 m (20.0 ft)		7.5 m (25.0 ft)		9.0 m (30.0 ft)		10.5 m (35.0 ft)		12.0 m (40 ft)		Diagram		m ft	
	Over Front	Over Side	Over Front	Over Side	Over Front	Over Side	Over Front	Over Side	Over Front	Over Side	Over Front	Over Side	Over Front	Over Side		
12.0 m 40.0 ft	kg lb												*11 100 *24,550	*11 100 *24,550	12.5 40.6	
10.5 m 35.0 ft	kg lb												*10 700 *23,580	*10 700 *23,580	13.5 44.2	
9.0 m 30.0 ft	kg lb												*10 500 *23,180	*10 500 *23,180	14.2 46.7	
7.5 m 25.0 ft	kg lb								*21 300 *46,390	21 330 46,140			*10 500 *23,220	*10 500 *23,220	14.7 48.5	
6.0 m 20.0 ft	kg lb				*31 900 *68,420	*31 920 *68,420	*26 200 *56,380	*26 150 *56,380	*22 600 *49,050	20 640 44,250	*20 400	15 770	*10 700 *23,650	9900 21,960	15.0 49.5	
4.5 m 15.0 ft	kg lb				*36 700 *78,680	34 390 74,260	*28 900 *62,120	25 630 55,170	*24 200 *52,370	19 580 42,010	*20 820	15 310 32,380	*11 100 *24,480	9400 20,810	15.1 50.0	
3.0 m 10.0 ft	kg lb				*87,270	68,570	*31 300 *67,430	24 010 51,670	*25 800 *55,640	18 540 39,800	*22 200 *47,950	14 500 31,020	*11 700 *25,740	9200 20,370	15.1 49.8	
1.5 m 5.0 ft	kg lb						*33 000 *71,230	22 750 48,930	*27 000 *58,200	17 660 37,900	*22 800 *49,360	13 920 29,790	*12 500 *27,530	9400 20,640	14.8 48.9	
Ground Line	kg lb				*42 700 *92,270	29 460 63,270	*33 800 *72,890	21 940 47,140	*27 600 *59,490	17 020 36,510	*23 100 *49,860	13 480 28,870	*13 600 *30,030	9900 21,730	14.4 47.5	
-1.5 m -5.0 ft	kg lb				*41 500 *89,810	29 220 62,680	*33 400 *72,230	21 530 46,210	*27 400 *59,080	16 650 35,720	*22 700 *48,790	13 240 28,400	*15 200 *33,550	10 800 23,900	13.7 45.2	
-3.0 m -10.0 ft	kg lb			*45 000 *102,500	44 040 94,200	*39 200 *84,750	29 310 62,850	*32 000 *68,510	21 460 46,190	*26 200 *56,370	16 570 35,570	*21 100	13 300	*16 700 *36,720	12 500 27,760	12.8 42.0
-4.5 m -15.0 ft	kg lb	*47 000 *104,450	*46 970 *104,450	*42 400 *91,850	*42 380 *91,850	*35 500 *76,590	29 710 63,740	*29 200 *49,710	21 720 46,650	*23 500 *49,960	16 830 36,220			*14 600 *31,440	*14 600 *31,440	11.5 37.7
-6.0 m -20.0 ft	kg lb	*40 000 *86,250	*39 950 *86,250	*35 400 *76,120	*35 420 *76,120	*29 900 *63,810	*29 860 *63,810	*24 100 *50,970	22 400 48,250					*11 800 *25,270	*11 800 *25,270	9.8 31.8
-7.5 m -25.0 ft	kg lb			*24 800 *51,820	*24 820 *51,820	*20 400 *41,650	*20 430 *41,650							*13 200 *30,120	*13 100 *30,120	7.8 25.0

BOOM – 9.2 m (30.2')
STICK – 4.5 m (14.8')

BUCKET – 5.0 m³ (6.5 yd³)
SHOES – 900 mm (36")

UNDERCARRIAGE – LONG
HEAVY LIFT – ON

Diagram	3.0 m (10.0 ft)		4.5 m (15.0 ft)		6.0 m (20.0 ft)		7.5 m (25.0 ft)		9.0 m (30.0 ft)		10.5 m (35.0 ft)		12.0 m (40 ft)		13.5 m (45 ft)		Diagram		m ft		
	Over Front	Over Side	Over Front	Over Side	Over Front	Over Side	Over Front	Over Side	Over Front	Over Side	Over Front	Over Side	Over Front	Over Side	Over Front	Over Side	Over Front	Over Side			
12.0 m 40.0 ft	kg lb																		*9100 *20,030	*9100 *20,030	13.4 43.7
10.5 m 35.0 ft	kg lb																		*8800 *19,450	*8800 *19,450	14.3 46.9
9.0 m 30.0 ft	kg lb																		*8700 *19,210	*8700 *19,210	15.0 49.3
7.5 m 25.0 ft	kg lb											*19 200 *41,770	*19 220 41,770						*8800 *19,360	*8800 *19,360	15.5 51.0
6.0 m 20.0 ft	kg lb									*23 700	*23 690	*20 700 *44,800	*20 690 44,800	*18 700 *40,650	16 000 34,150				*9000 *19,850	8800 19,510	15.8 52.0
4.5 m 15.0 ft	kg lb							*33 300 *71,340	*33 280 71,340	*25 810 *57,180	25 960 56,460	*22 400 *48,510	19 870 42,620	*19 700 *42,790	15 280 32,650	*17 900	11 760		*9400 *20,700	8300 18,430	15.9 52.4
3.0 m 10.0 ft	kg lb							*37 800 *81,050	32 810 70,710	*29 300 *63,140	24 450 52,600	*24 200 *52,270	18 710 40,150	*20 800 *45,090	14 530 31,060	*18 500 *40,110	11 310 24,060		*10 000 *21,940	8100 17,940	15.8 52.2
1.5 m 5.0 ft	kg lb							*40 800 *87,810	30 660 65,990	*31 500 *67,950	22 960 49,340	*25 700 *55,390	17 690 37,660	*21 800 *47,100	13 830 29,580	*19 000 40,850	10 880 23,160		*10 800 *23,690	8200 18,060	15.6 51.4
Ground Line	kg lb							*42 100 *90,810	29 400 63,150	*32 900 *70,880	21 890 46,990	*26 700 *57,650	16 890 36,200	*22 400 *48,380	13 270 28,380	18 700 40,900	10 530 22,450		*11 800 *26,080	8600 18,850	15.2 50.0
-1.5 m -5.0 ft	kg lb					*29 000 *67,800	*29 010 *67,800	*41 900 *90,510	28 790 61,770	*33 200 *71,630	21 240 45,560	*27 000 *58,320	16 350 35,040	*22 500 *48,480	12 890 27,570	18 500	10 330		*13 300 *29,410	9300 20,510	14.5 47.9
-3.0 m -10.0 ft	kg lb			*26 000 *59,550	*26 030 *59,550	*99,450	*91,500	*87,350	61,390	*70,030	44,950	*57,060	34,500	*46,730	27,280				*15 400 *34,230	10 600 23,420	13.7 45.0
-4.5 m -15.0 ft	kg lb	*32 200	*32 190 *63,405	*40 800 *93,150	*40 840 *93,150	*46 700 *100,950	43 240 *92,570	*37 700 *81,220	28 830 61,830	*30 500 *65,670	21 010 45,090	*24 800 *53,170	16 130 34,630	*19 700	12 890				*15 500 *33,930	12 800 28,500	12.5 41.0
-6.0 m -20.0 ft	kg lb	*46 600	*46 650 *92,594	*49 600	*49 620	*40 700 *87,560	*40 700 *87,560	*33 200 *71,290	29 390 63,090	*27 000 *50,310	21 420 46,050	*21 300 *44,650	16 560 35,690						*12 900 *28,440	*12 900 *28,440	11.0 35.8
-7.5 m -25.0 ft	kg lb			*38 000 *80,680	*38 010 *80,680	*32 000 *67,920	*32 040 *67,920			*20 500 *42,040	*20 450 *42,040								*10 500 *23,440	*10 500 *23,440	9.0 29.4

* Indicates that the load is limited by hydraulic capacity rather than tipping capacity. Lift capacity ratings are based on SAE standard JISO 10567. Rated loads do not exceed 87% of hydraulic lifting capacity or 75% of tipping capacity.

5110B/5110B L Hydraulic Excavator

General Purpose Boom Lift Capacities



Load Point Height



Load at Maximum Reach



Load Radius Over Front



Load Radius Over Side

BOOM – 9.2 m (30.2')
STICK – 5.5 m (18')

BUCKET – 4.2 m³ (5.5 yd³)
SHOES – 900 mm (36")

UNDERCARRIAGE – LONG
HEAVY LIFT – ON

Diagram	3.0 m (10.0 ft)		4.5 m (15.0 ft)		6.0 m (20.0 ft)		7.5 m (25.0 ft)		9.0 m (30.0 ft)		10.5 m (35.0 ft)		12.0 m (40 ft)		14 m (45 ft)		Diagram		m ft			
	Over Front	Over Side	Over Front	Over Side	Over Front	Over Side	Over Front	Over Side	Over Front	Over Side	Over Front	Over Side	Over Front	Over Side	Over Front	Over Side	Over Front	Over Side				
12.0 m 40.0 ft	kg lb																		*6800 *15,140	*6800 *15,140	14.7 48.1	
10.5 m 35.0 ft	kg lb																		*6500 *14,430	*6500 *14,430	15.6 51.1	
9.0 m 30.0 ft	kg lb																		*6400 *14,080	*6400 *14,080	16.2 53.2	
7.5 m 25.0 ft	kg lb													*16 000 *34,880	*15 990 *34,880				*6400 *14,020	*6400 *14,020	16.6 54.7	
6.0 m 20.0 ft	kg lb											*40,280	*40,280	*16 900 *36,810	16 490 35,200	*15 800 *34,500	12 570 26,690		*6500 *14,230	*6500 *14,230	16.9 55.7	
4.5 m 15.0 ft	kg lb						*29 400 *63,120	*29 420 *63,120	*24 000	*23 950	*20 500 *44,280	20 460 43,870	*18 100 *39,310	15 670 33,480	*16 500 *35,870	12 060 25,640			*6700 *14,710	*6700 *14,710	17.0 56.0	
3.0 m 10.0 ft	kg lb						*34 300 *73,710	*34 230 *73,710	*27 000 *58,130	25 230 54,230	*22 500 *48,480	19 170 41,110	*19 400 *41,270	14 800 31,890	*17 300 *36,110	11 490 24,850			*7000 *15,470	6800 15,050	16.9 55.9	
1.5 m 5.0 ft	kg lb						*38 300 *82,300	31 540 67,850	*29 600 *63,870	23 460 50,400	*24 200 *52,330	17 970 38,530	*20 600 *44,550	13 980 29,890	*18 000 *38,980	10 940 23,290			*7500 *16,570	6800 15,090	16.7 55.1	
Ground Line	kg lb						*40 700 *87,650	29 700 63,820	*31 500 *68,040	22 090 47,410	*25 600 *55,310	16 980 36,380	*21 500 *46,520	13 280 28,380	*18 500 *39,970	10 460 22,290			*8200 *18,090	7100 15,650	16.3 53.8	
-1.5 m -5.0 ft	kg lb					*26 100 *60,950	*26 090 *60,950	*41 500 *89,660	28 630 61,440	*32 500 *70,220	21 150 45,370	*26 400 *57,010	16 250 34,810	*22 000 *47,560	12 750 27,240	18 300 39,190	10 110 21,560			*9100 *20,200	7600 16,840	15.8 51.9
-3.0 m -10.0 ft	kg lb																					
-4.5 m -15.0 ft	kg lb	*35,120		*20 400 *46,680	*20 370 *46,680	*35 600 *82,360	*35 560 *82,360	*41 100 *87,820	28 130 60,670	*32 500 *70,210	20 620 44,220	*26 500 *57,070	15 800 33,850	*21 900 *47,220	12 420 26,560	18 100 38,860	9940 21,250			*10 500 *23,160	8500 18,910	15.0 49.3
-6.0 m -20.0 ft	kg lb	*23 300 *52,870	*23 340 *52,870	*31 200 *71,300	*31 210 *71,300	*48 500 *108,340	41 960 89,820	*39 300 *84,740	28 070 60,180	*31 500 *67,750	20 460 43,860	*25 600 *55,400	15 640 33,530	*21 000 *44,810	12 340 26,450					*12 400 *27,500	10 000 22,340	13.9 45.8
-7.5 m -25.0 ft	kg lb	*34 300 *77,890	*34 330 *77,890	*44 600 *102,080	*44 600 *102,080	*45 400 *97,670	42 580 91,210	*36 100 *77,510	28 380 60,890	*29 000 *62,280	20 630 44,290	*23 500 *50,020	15 800 33,940	*18 400 *38,430	12 600 27,160					*13 000 *28,360	12 600 28,260	12.6 41.2
	kg lb	*109,650	*109,650	*48 500 *103,600	*48 520 *103,600	*38 400 *82,060	*38 440 *82,060	*30 900 *65,760	29 110 62,550	*24 700 *52,270	21 210 45,650	*19 100 *39,350	16 400 35,430						*10 600 *22,770	*10 600 *22,770	10.8 35.0	

* Indicates that the load is limited by hydraulic capacity rather than tipping capacity. Lift capacity ratings are based on SAE standard JISO 10567. Rated loads do not exceed 87% of hydraulic lifting capacity or 75% of tipping capacity.

Bucket Capacities and Weights

	Capacity		Stick		Weight*		Width**		Teeth #	Material Density		
	m ³	yd ³	m	ft	kg	lb	mm	in		mt/m ³	lb/yd ³	
Mass Excavation Buckets – Standard Undercarriage												
Heavy Duty Rock	7.6	9.9	3.4	11.2	7560	16,700	2580	102	5	1.80	3000	
Heavy Duty Rock	6.2	8.1	4.1	13.5	6720	14,800	2250	89	4	1.80	3000	
Medium Duty	8.6	11.2	3.4	11.2	6320	13,900	2540	100	6	1.65	2800	
Medium Duty	8.0	10.5	3.4	11.2	6110	13,500	2540	100	6	1.80	3000	
Medium Duty	7.4	9.7	4.1	13.5	5730	12,600	2060	81	5	1.75	2900	
Medium Duty	6.8	8.9	4.1	13.5	5530	12,200	2210	87	5	1.95	3300	
Coal	10.4	13.6	4.1	13.5	7330	16,200	3130	123	8	1.00	1700	

General Purpose Buckets – Long Undercarriage

Heavy Duty Rock	4.6	6.0	4.5	14.8	5711	12,581	2235	88	4 ¹	1.80	3030
Medium Duty	6.0	7.8	3.6	11.8	5316	11,711	2540	100	6 ²	1.80	3030
Medium Duty	5.0	6.5	4.5	14.8	4787	10,540	2210	87	5 ²	1.80	3030
Medium Duty	4.2	5.5	5.5	18.0	7370	16,230	1905	75	5 ²	1.80	3030

* Weight with G.E.T.

** Width at cutting edge.

¹ V810 teeth.

² J600 teeth.

See your dealer for customized bucket options.

Bucket capacity may be optimized for specific materials.