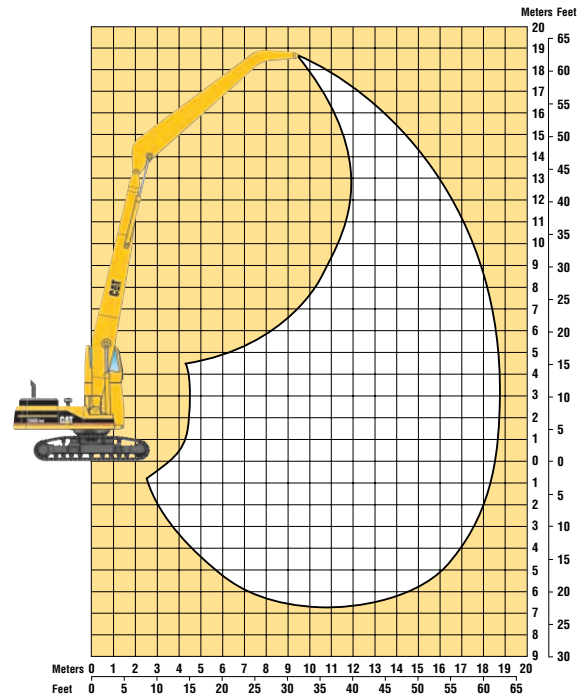


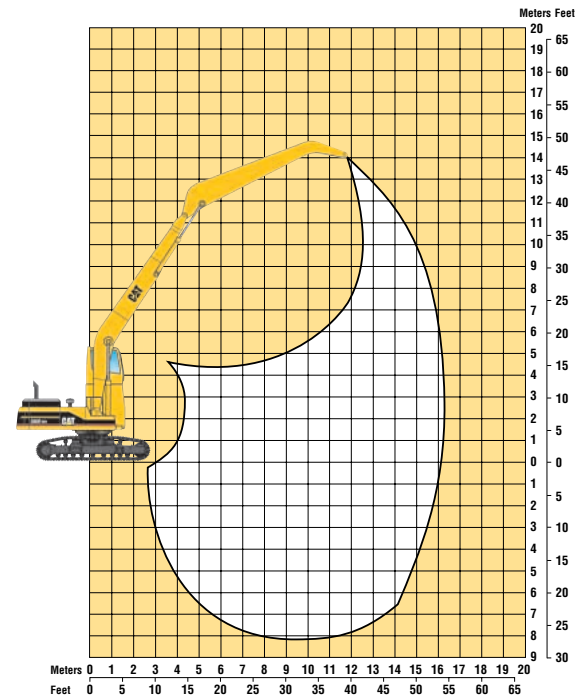
365B MH Track-Type Material Handler

Working Ranges

Maximum horizontal reach	18.9 m	61'11"
Maximum vertical pin height	19.2 m	62'10"



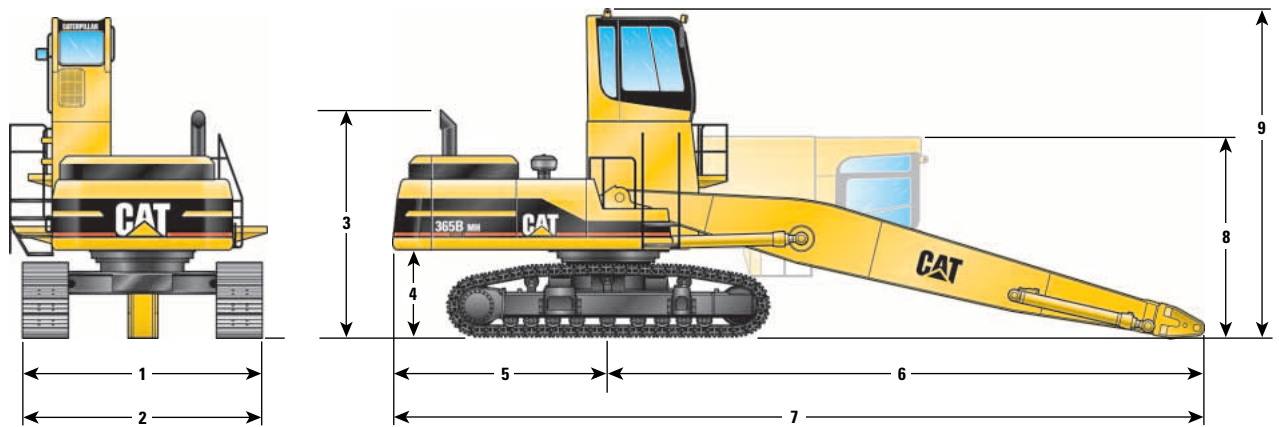
Maximum horizontal reach	16.9 m	55'6"
Maximum vertical pin height	14.5 m	47'5"



365B MH Track-Type Material Handler

Dimensions

All dimensions are approximate.

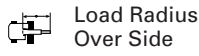
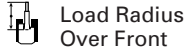


	18.9 m (61'11") front	16.9 m (55'6") front
1 Operating Width – track fully retracted	4748 mm (15'7")	4748 mm (15'7")
2 Operating Width – track fully extended	5248 mm (17'3")	5248 mm (17'3")
3 Height to Top of Exhaust	4113 mm (13'6")	4113 mm (13'6")
4 Counterweight Clearance	1759 mm (5'9")	1759 mm (5'9")
5 Tail Swing Radius	3920 mm (12'10")	3920 mm (12'10")
6 Swing Center to End of Boom	10 964 mm (36'0")	10 242 mm (33'7")
7 Rear of Carrier to End of Boom	14 884 mm (48'10")	14 162 mm (46'6")
8 Shipping Height – cab tipped	3972 mm (13'0")	3972 mm (13'0")
9 Operating Height – to top of cab	5960 mm (19'7")	5960 mm (19'7")

365B MH Track-Type Material Handler

Lift Capacities

365B MH with Cat two-piece, 18.9 m (61'11") front



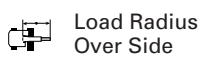
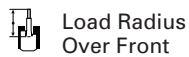
Load Point Height		3.0 m / 10.0 ft		4.5 m / 15.0 ft		6.0 m / 20.0 ft		7.5 m / 25.0 ft		9.0 m / 30.0 ft		10.5 m / 35.0 ft		12.0 m / 40.0 ft		13.5 m / 45.0 ft		15.0 m / 50.0 ft		16.5 m / 55.0 ft		18.0 m / 60.0 ft	
		kg	lb	kg	lb	kg	lb	kg	lb	kg	lb	kg	lb	kg	lb	kg	lb	kg	lb	kg	lb	kg	lb
18.0 m / 60.0 ft	kg												*11 000	*11 000									
	lb												*24,230	*24,230									
16.5 m / 55.0 ft	kg														*9700	*9700							
	lb														*21,270	*21,270							
15.0 m / 50.0 ft	kg														*9480	*9480	*8740	*8740					
	lb														*20,720	*20,720	*19,140	*19,140					
13.5 m / 45.0 ft	kg														*9390	*9390	*8620	*8620	*7980	*7980			
	lb														*20,480	*20,480	*18,830	*18,830	*17,440	*17,440			
12.0 m / 40.0 ft	kg														*9380	*9380	*8590	*8590	*7920	*7920			
	lb														*20,440	*20,440	*18,720	*18,720	*17,240	*17,240			
10.5 m / 35.0 ft	kg														*9460	*9460	*8620	*8620	*7910	*7910	*7270	*7270	
	lb														*20,570	*20,570	*18,760	*18,760	*17,200	*17,200	*17,790	*17,790	
9.0 m / 30.0 ft	kg														*9600	*9600	*8700	*8700	*7930	*7930	*7250	*7250	
	lb														*20,860	*20,860	*18,890	*18,890	*17,240	*17,240	*15,740	*15,740	
7.5 m / 25.0 ft	kg												*11 000	*11 000	*9790	*9790	*8810	*8810	*7980	*7980	*7260	*7260	*6550
	lb												*23,850	*23,850	*21,250	*21,250	*19,110	*19,110	*17,330	*17,330	*15,740	*15,740	*6550
6.0 m / 20.0 ft	kg												*13 070	*13 070	*11 330	*11 330	*10 000	*10 000	*8930	*8930	*8040	*8040	*7260
	lb												*28,330	*28,330	*24,580	*24,580	*21,690	*21,690	*19,380	*19,380	*17,440	*17,440	*15,720
4.5 m / 15.0 ft	kg			*27 350	*27 350	*20 400	*20 400	*16 310	*16 310	*13 600	*13 600	*11 670	*11 670	*10 200	*10 200	*9040	*9040	*8080	*8080	*7250	*7250	*6440	*6440
	lb			*59,020	*59,020	*44,120	*44,120	*35,320	*35,320	*29,480	*29,480	*25,290	*25,290	*22,110	*22,110	*19,600	*19,600	*17,500	*17,500	*15,670	*15,670	*13,820	*13,820
3.0 m / 10.0 ft	kg			*11 040	*11 040	*21 650	*21 650	*17 050	*17 050	*14 050	*14 050	*11 940	*11 940	*10 360	*10 360	*9120	*9120	*8090	*8090	*7200	*7200	*6320	*6320
	lb			*27,650	*27,650	*46,850	*46,850	*36,910	*36,910	*30,450	*30,450	*25,880	*25,880	*22,440	*22,440	*19,750	*19,750	*17,500	*17,500	*15,540	*15,540	*13,540	*13,540
1.5 m / 5.0 ft	kg			*5790	*5790	*19 320	*19 320	*17 480	*17 480	*14 330	*14 330	*12 100	*12 100	*10 430	*10 430	*9120	*9120	*8040	*8040	*7080	*7080	*6110	*6110
	lb			*13,670	*13,670	*46,450	*46,450	*37,850	*37,850	*31,040	*31,040	*26,210	*26,210	*22,600	*22,600	*19,750	*19,750	*17,370	*17,370	*15,260	*15,260	*13,030	*13,030
0.0 m / 0.0 ft	kg			*5750	*5750	*13 600	*13 600	*17 480	*17 480	*14 350	*14 350	*12 090	*12 090	*10 380	*10 380	*9020	*9020	*7880	*7880	*6860	*6860	*5780	*5780
	lb			*13,250	*13,250	*31,660	*31,660	*37,900	*37,900	*31,090	*31,090	*26,170	*26,170	*22,470	*22,470	*19,510	*19,510	*17,020	*17,020	*14,730	*14,730	*12,190	*12,190
-1.5 m / -5.0 ft	kg	*3780	*3780	*6880	*6880	*12 740	*12 740	*17 010	*17 010	*14 050	*14 050	*11 850	*11 850	*10 150	*10 150	*8780	*8780	*7600	*7600	*6490	*6490	*5240	*5240
	lb	*8550	*8550	*15,670	*15,670	*29,260	*29,260	*36,860	*36,860	*30,420	*30,420	*25,640	*25,640	*21,940	*21,940	*18,940	*18,940	*16,340	*16,340	*13,870	*13,870	*11,480	*11,480
-3.0 m / -10.0 ft	kg			*8430	*8430	*13 330	*13 330	*16 040	*16 040	*13 390	*13 390	*11 340	*11 340	*9700	*9700	*8330	*8330	*7120	*7120	*5910	*5910		
	lb			*19,090	*19,090	*30,400	*30,400	*34,740	*34,740	*28,970	*28,970	*24,520	*24,520	*20,920	*20,920	*17,920	*17,920	*15,230	*15,230	*12,480	*12,480		
-4.5 m / -15.0 ft	kg					*14 550	*14 550	*14 560	*14 560	*12 320	*12 320	*10 490	*10 490	*8960	*8960	*7620	*7620	*6360	*6360	*4980	*4980		
	lb					*33,070	*33,070	*31,480	*31,480	*26,610	*26,610	*22,620	*22,620	*19,270	*19,270	*16,290	*16,290	*13,470	*13,470				
-6.0 m / -20.0 ft	kg							*12 520	*12 520	*10 780	*10 780	*9240	*9240	*7850	*7850	*6550	*6550						
	lb							*26,940	*26,940	*23,170	*23,170	*19,800	*19,800	*16,760	*16,760	*13,850	*13,850						

* Indicates that the load is limited by hydraulic capacity rather than tipping capacity. Lift capacity ratings are based on standard SAE J/ISO 10567. Rated loads do not exceed 87% of hydraulic lifting capacity or 75% of tipping capacity.

365B MH Track-Type Material Handler

Lift Capacities

365B MH with Cat two-piece, 16.9 m (55'6") front



		3.0 m/ 10.0 ft		4.5 m/ 15.0 ft		6.0 m/ 20.0 ft		7.5 m/ 25.0 ft		9.0 m/ 30.0 ft		10.5 m/ 35.0 ft		12.0 m/ 40.0 ft		13.5 m/ 45.0 ft		15.0 m/ 50.0 ft		16.5 m/ 55.0 ft		
12.0 m 40.0 ft	kg lb																*7620 *16,780	*7620 *16,780				
10.5 m 35.0 ft	kg lb																*7600 *16,640	*7600 *16,640				
9.0 m 30.0 ft	kg lb																*7700 *16,820	*7700 *16,820	*7350 *16,090	*7350 *16,090		
7.5 m 25.0 ft	kg lb													*8480 *18,450	*8480 *18,450	*7890 *17,200	*7890 *17,200	*7440 *16,250	*7440 *16,250			
6.0 m 20.0 ft	kg lb													*8860 *19,250	*8860 *19,250	*8140 *17,730	*8140 *17,730	*7590 *16,530	*7590 *16,530			
4.5 m 15.0 ft	kg lb									*11 940 *25,840	*11 940 *25,840	*10 390 *22,530	*10 390 *22,530	*9270 *20,130	*9270 *20,130	*8430 *18,320	*8430 *18,320	*7770 *16,910	*7770 *16,910	*7250 *16,100	*7250 *16,100	
3.0 m 10.0 ft	kg lb			*9770 *23,610	*9770 *23,610	*19 930 *43,010	*19 930 *43,010	*15 530 *33,580	*15 530 *33,580	*12 820 *27,760	*12 820 *27,760	*11 000 *23,850	*11 000 *23,850	*9700 *21,030	*9700 *21,030	*8720 *18,940	*8720 *18,940	*7960 *17,280	*7960 *17,280	*7340 *16,300	*7340 *16,300	
1.5 m 5.0 ft	kg lb			*7340 *17,060	*7340 *17,060	*19 530 *46,050	*19 530 *46,050	*16 640 *36,000	*16 640 *36,000	*13 600 *29,450	*13 600 *29,450	*11 550 *25,020	*11 550 *25,020	*10 080 *21,870	*10 080 *21,870	*8980 *19,490	*8980 *19,490	*8120 *17,640	*8120 *17,640	*7400 *16,400	*7400 *16,400	
0.0 m 0.0 ft	kg lb	*3690 *8360	*3690 *8360	*8040 *18,340	*8040 *18,340	*16 100 *37,130	*16 100 *37,130	*17 390 *37,680	*17 390 *37,680	*14 180 *30,710	*14 180 *30,710	*11 980 *25,970	*11 980 *25,970	*10 390 *22,530	*10 390 *22,530	*9190 *19,910	*9190 *19,910	*8230 *17,840	*8230 *17,840			
-1.5 m -5.0 ft	kg lb	*6290 *14,130	*6290 *14,130	*9630 *21,760	*9630 *21,760	*15 840 *36,180	*15 840 *36,180	*17 750 *38,450	*17 750 *38,450	*14 510 *31,440	*14 510 *31,440	*12 240 *26,520	*12 240 *26,520	*10 570 *22,910	*10 570 *22,910	*9290 *20,130	*9290 *20,130	*8230 *17,810	*8230 *17,810			
-3.0 m -10.0 ft	kg lb	*8560 *19,180	*8560 *19,180	*11 430 *25,750	*11 430 *25,750	*16 730 *38,010	*16 730 *38,010	*17 690 *38,320	*17 690 *38,320	*14 560 *31,550	*14 560 *31,550	*12 300 *26,630	*12 300 *26,630	*10 590 *22,930	*10 590 *22,930	*9240 *19,970	*9240 *19,970	*8080 *17,390	*8080 *17,390			
-4.5 m -15.0 ft	kg lb			*13 240 *29,760	*13 240 *29,760	*18 140 *41,120	*18 140 *41,120	*17 200 *37,260	*17 200 *37,260	*14 270 *30,890	*14 270 *30,890	*12 080 *26,120	*12 080 *26,120	*10 380 *22,400	*10 380 *22,400	*8960 *19,290	*8960 *19,290	*7630 *16,800	*7630 *16,800			
-6.0 m -20.0 ft	kg lb			*15 010 *33,710	*15 010 *33,710	*19 760 *42,750	*19 760 *42,750	*16 240 *35,120	*16 240 *35,120	*13 590 *29,340	*13 590 *29,340	*11 530 *24,850	*11 530 *24,850	*9840 *21,140	*9840 *21,140	*8320 *17,730	*8320 *17,730					
-7.5 m -25.0 ft	kg lb							*14 700 *31,640	*14 700 *31,640	*12 390 *26,630	*12 390 *26,630	*10 480 *22,420	*10 480 *22,420	*8780 *18,630	*8780 *18,630							

* Indicates that the load is limited by hydraulic capacity rather than tipping capacity. Lift capacity ratings are based on standard SAE J/ISO 10567. Rated loads do not exceed 87% of hydraulic lifting capacity or 75% of tipping capacity.