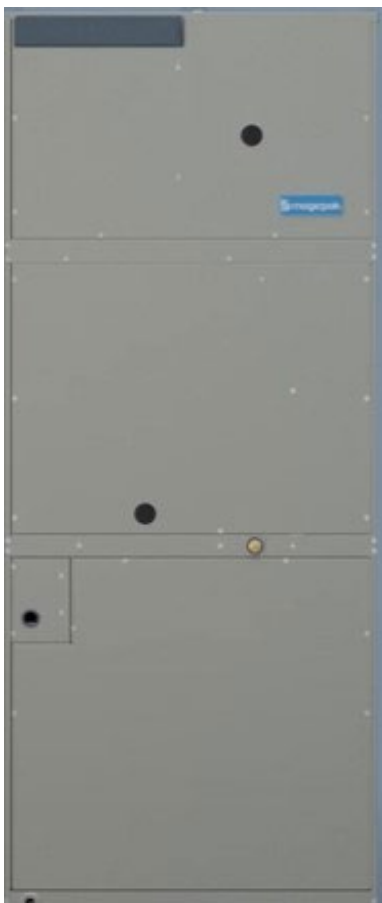
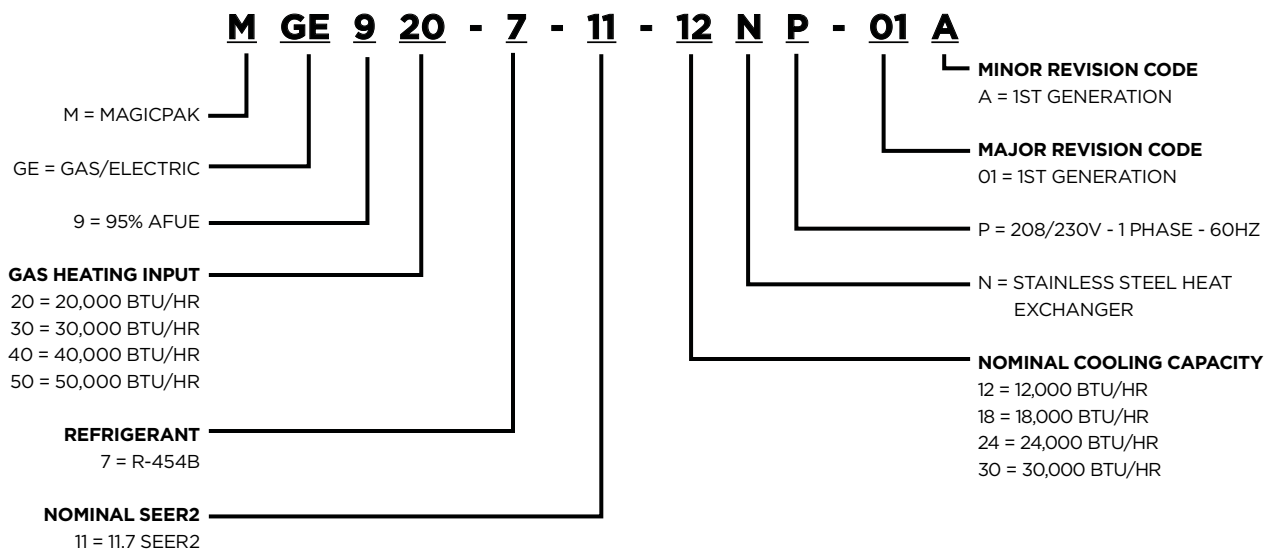


ELECTRIC COOLING/
GAS HEATING
PACKAGED UNIT

FORM NO. MGE9-100 (06/2025)



MODEL NUMBER GUIDE



CONTENTS

APPLICATIONS3

UNIT APPROVALS3

WARRANTY3

STANDARD FEATURES3

OPTIONS & ACCESSORIES5

 FIELD-INSTALLED ACCESSORIES..... 5

UNIT ELECTRICAL AND PHYSICAL DATA6

UNIT DIMENSIONS (IN.)7

MINIMUM CLEARANCES.....8

OUTDOOR SOUND RATING & CABINET AIR LEAKAGE9

FACTORY FILTER SIZE (IN.) AND PRESSURE DROP (IN. W.C.).....9

SCCR ACCESSORY9

HIGH ALTITUDE APPLICATION DATA9

LP CONVERSION KIT9

WALL SLEEVES & LOUVERS.....10

RATED COOLING & HEATING PERFORMANCE.....11

EXTENDED COOLING PERFORMANCE DATA.....12

BLOWER PERFORMANCE13

APPLICATIONS

- MagicPak units are designed for use in all multifamily applications, such as: apartments, condominiums, student housing and senior living
- Installation in conditioned and non-conditioned mechanical spaces
- Units are approved for installations up to 5,500 ft. without any modifications or adjustments
- For installations above 5,500 ft., refer to High Altitude Application Data table and installation instructions for additional details
- Must be ducted air supply and return to the unit
 - No free air supply or return is allowed

UNIT APPROVALS

SOUND RATING

- Outdoor sound level measurements tested per ANSI/AHRI Standard 270
- Refer to Outdoor Sound Rating & Cabinet Air Leakage table for additional details

ALUMINUM LOUVER - PAINT SPECS

- Standard and impact-resistant louvers meet AAMA 2605 specifications

WARRANTY

COMPRESSOR

- Five (5) years limited parts warranty

HEAT EXCHANGER

- Twenty (20) years limited parts warranty on stainless steel heat exchanger

ALL OTHER COVERED COMPONENTS

- Refer to Equipment Limited Warranty for additional details

STANDARD FEATURES

ELECTRICAL CONNECTIONS & GAUGE PORTS

- Line voltage knockouts (two concentric) to accommodate field required wire size
- Thermostat connections are located at the top of the cabinet
- Two refrigeration gauge ports are located within the lower compartment of the unit
- Refer to Unit Dimension figure for additional details
- Refer to Unit Electrical and Physical Data table for additional details

CABINET

- Embossed galvanized steel cabinet
- Indoor section of the cabinet insulated with 0.5 in. dual density fiberglass insulation
- Outdoor section of the cabinet insulated with 0.5 in. weather-resistant polystyrene insulation

INTERNAL FILTER

- Tool-less filter access
- Factory-installed 1 in. filter rack with washable filter
- Field-supplied filters up to MERV 6 can typically be installed in the filter slot internal to unit in lieu of washable filter, when proper duct design is applied
- If a higher resistance filter is field installed in the unit, the added resistance must be included in the external static pressure and must not exceed 0.5 in. w.c. including ductwork
- Refer to Factory Filter Size and Pressure Drop and Blower Performance tables for additional details

REFRIGERATION SYSTEM

- Factory charged with R-454B refrigerant
- Factory sealed and tested
- Refrigerant Detection System (RDS) in units charged with refrigerant greater than or equal to 64oz

NOTE: RDS kit available for units below 64oz refrigerant charge; see Field-Installed Accessories

Indoor and Outdoor Coils

- Copper tube with aluminum fin coils

High Pressure Switch

- Shuts off unit if abnormal operating conditions cause the refrigerant liquid pressure to rise above acceptable levels

Low Pressure Switch

- Provides loss of charge protection by shutting off unit if refrigerant suction pressure falls below acceptable levels

TRANSFORMER

- Rated for 40VA
- Factory wired for 230/240V power supply, and includes field selectable terminal for 208V
- Converts line voltage to 24V for the thermostat and control circuits within the unit

COMBUSTION AIR INDUCER

- Pests are discouraged from nesting in the unit's flue pipe during summer months by briefly energizing the gas furnace inducer blower at the beginning of each cooling cycle

SUPPLY AIR BLOWER**Constant Torque ECM Blower Motor**

- Motor provides specified air volume at 0.1 in. - 0.5 in. w.c. external static pressure
- Blower assembly is easily removed for servicing
- Refer to Blower Performance tables for additional details

Electronic Blower Control

- Dedicated blower speed taps for continuous fan, cooling, and heating operation are programmed for optimal airflow and controlled by 24V thermostat signals
- Blower speed adjustment is easily accomplished by speed tap selection
- Fixed blower delays have been selected to enhance comfort
- Refer to Blower Performance tables for additional details

OUTDOOR FAN

- Heavy duty, fully enclosed and weatherproof
- Aluminum fan blades

CONDENSATE MANAGEMENT**Primary Drain Pan**

- Antimicrobial protection: drain pan is injected with an antibacterial agent that destabilizes the membrane of microorganism cells, disrupting the cellular function of odor-causing mold and bacteria so that they can no longer grow or reproduce

Overflow Protection

- Indoor drain pan overflow protection switch monitors the condensate level in primary drain pan
- Prevents unit from running if water is sensed

Secondary Drain Pan

- Polypropylene wall sleeve base is specifically designed to direct rain water out of the building and in the event of any restriction in the primary drain will act as a redundant overflow protection

GAS HEATING SYSTEM

- 95% AFUE rating on all models
- Stainless steel primary heat exchanger
- Stainless steel secondary heat exchanger
- Two-Stage operation for improved comfort and efficiency
- Sealed burner box for quiet operation that isolates outdoor combustion air for improved cold climate reliability
- Ball-bearing composite housing inducer capable to run to -40degF
- Patent pending telescoping field adjustable vent pipe for varying wall thickness
- Condensate Management system with Patented Freeze Shield Technology™. Condensation trap recirculates flue gas exhaust through trap for freeze protection and freeze recovery

OPTIONS & ACCESSORIES

FIELD-INSTALLED ACCESSORIES

REFRIGERANT DETECTION SYSTEM KIT (RDS)

- For units below 64oz refrigerant charge
- Includes control board, harness, leakage sensor, and sensor bracket

WALL SLEEVES & LOUVERS

- Units must be installed with approved wall sleeve and louver accessories for safe operation and are required for all installations

NOTE: Polypropylene louvers (ALVRP***MGE) should **not** be oversized

- Refer to Wall Sleeves and Louvers table for additional details

WALL SLEEVES (ASLEEVE)

- Penetrates the building envelope and creates a path for condenser air intake and exhaust
- Provides a sealed connection to the unit and a secure attachment foundation for the louvers
- Available in 6 in. to 12 in. depths

WALL SLEEVE EXTENSION (ASLEEVEEXT4)

- Provides an additional 4 in. of depth to the wall sleeve, for a maximum depth of 16 in.

LOUVERS

Polypropylene Louvers (ALVRP***MGE)

- Constructed from durable, corrosion-resistant plastic
- Available in four standard colors

Aluminum Louvers (ALVRAL)

- Constructed with 6063-T6 grade aluminum
- Available in anodized clear coat, primer (to be painted in the field), standard paint colors and custom colors with paint matching*

Impact-Resistant Aluminum Louvers (ALVRALC)

- Impact and wind load certified up to 186 MPH, risk categories III and IV, and wind exposures C and D
 - ALVRALC-1 & ALVRALC-2: FBC Notice of Acceptance (NOA) 20-0909.03
 - ALVRALC-3, -4 & -7: FBC Notice of Acceptance (NOA) 21-1216.11
- Constructed with 6063-T6 grade aluminum
- Available in anodized clear coat, primer (to be painted in the field), standard paint colors and custom colors with paint matching*

LIQUID PROPANE (LP) CONVERSION KIT (ALPKT*)

- Enables simple conversion from natural gas to liquid propane
- Refer to LP Conversion Kit table for additional details

SHORT CIRCUIT CURRENT RATING KIT (ASCCR)

- Provides 200kA of SCCR protection
- Refer to SCCR Accessory table for additional details

FILTERS

- Field-supplied filters up to MERV 6 can typically be installed in the filter slot internal to unit

NOTE: Use of paper frame **not** recommended

THERMOSTAT

- Required for all installations (field-supplied)
- Units are individually controlled with conventional 24V thermostat
- One-stage Cool/Two-stage gas Heat

* Certain exclusions apply. Refer to louver manufacturer's literature and warranty documentation.

UNIT ELECTRICAL AND PHYSICAL DATA (208/230 Volt - 1 Phase - 60HZ)¹

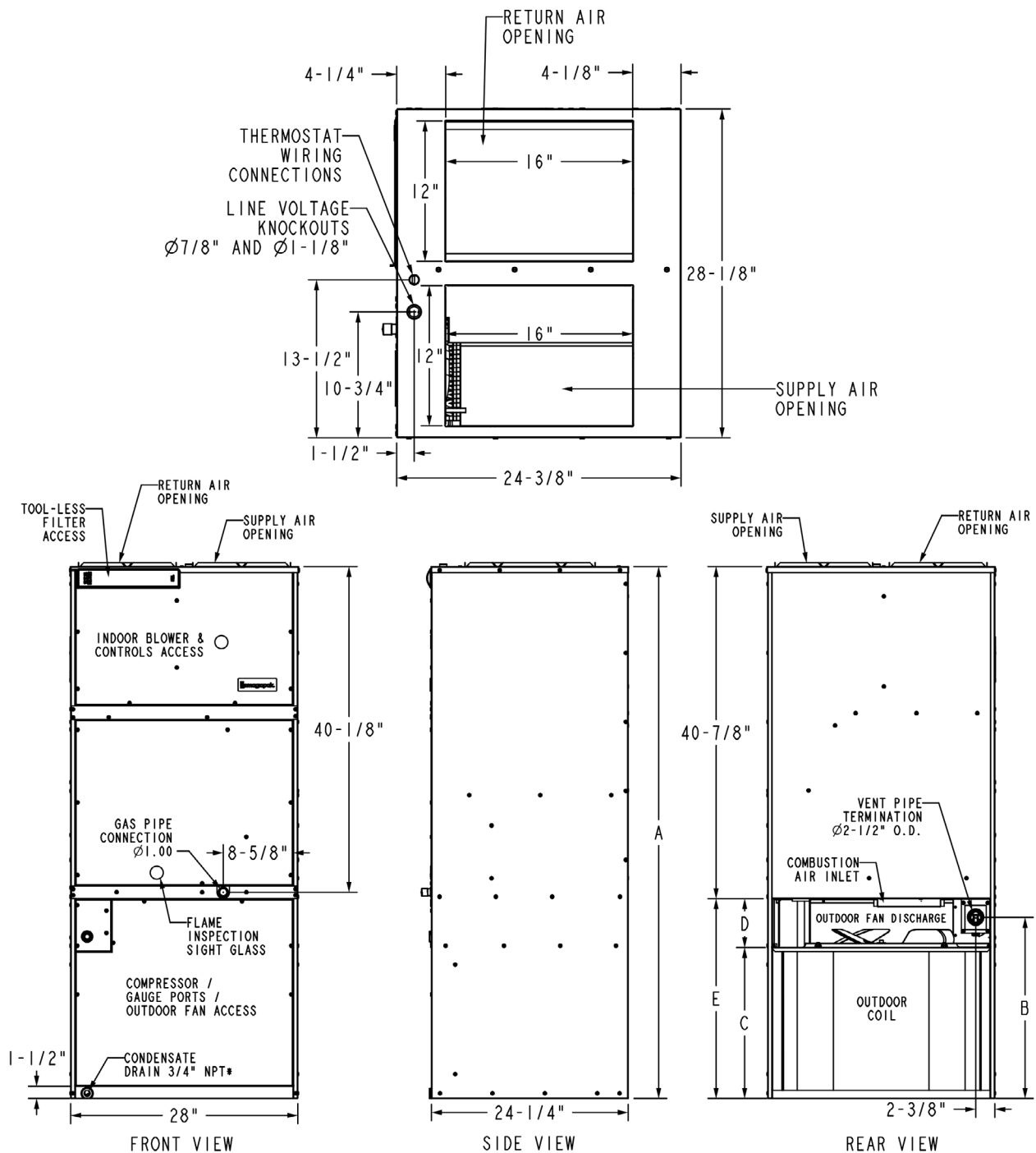
| Model | MCA ² | | MOCP ³ | | Default SCCR (kA) ⁴ | Compressor | | Outdoor Fan | | | | Indoor Blower | | | Approx | | R454B Charge. (OZ.) | R454B Charge. (LBS.) | R454B Charge. (KG.) |
|----------------------|------------------|------|-------------------|------|--------------------------------|-----------------------|-------------------------|-------------|-------------|----------------------|----------|-------------------|----------------------|----------|--------|------|---------------------|----------------------|---------------------|
| | 208V | 230V | 208V | 230V | | Rated Load Amps (RLA) | Locked Rotor Amps (LRA) | Dia. (in) | Nominal RPM | Full Load Amps (FLA) | Rated HP | Wheel D x W (in.) | Full Load Amps (FLA) | Rated HP | (LBS) | (KG) | | | |
| MGE920-7-11-12NP-01A | 8.3 | 8.3 | 15 | 15 | 5 | 5.4 | 26.4 | 18 | 1025 | 0.9 | 1/8 | 11 x 7 | 0.6 | 1/3 | 300 | 136 | 54.0 | 3.4 | 1.5 |
| MGE930-7-11-12NP-01A | | | | | | | | | | | | | | | | | | | |
| MGE920-7-11-18NP-01A | 10.6 | 10.6 | 15 | 15 | 5 | 6.8 | 32.7 | 18 | 1025 | 0.9 | 1/8 | 11 x 7 | 1.2 | 1/3 | 320 | 145 | 61.0 | 3.8 | 1.7 |
| MGE930-7-11-18NP-01A | | | | | | | | | | | | | | | | | | | |
| MGE930-7-11-24NP-01A | 15.7 | 15.7 | 25 | 25 | 5 | 10.2 | 41.2 | 18 | 1050 | 0.9 | 1/8 | 11 x 7 | 2.0 | 1/3 | 327 | 149 | 61.0 | 3.8 | 1.7 |
| MGE940-7-11-24NP-01A | | | | | | | | | | | | | | | | | | | |
| MGE950-7-11-24NP-01A | | | | | | | | | | | | | | | | | | | |
| MGE930-7-11-30NP-01A | 22.5 | 2.5 | 35 | 35 | 5 | 14.1 | 75.6 | 18 | 1100 | 2.8 | 1/3 | 11 x 7 | 2.1 | 1/2 | 365 | 166 | 72.0 | 4.5 | 2.0 |
| MGE940-7-11-30NP-01A | | | | | | | | | | | | | | | | | | | |
| MGE950-7-11-30NP-01A | | | | | | | | | | | | | | | | | | | |

¹ Acceptable voltage range: 197 - 253V² MCA = Minimum Circuit Ampacity³ MOCP = Maximum Over Current Protection⁴ SCCR = Short Circuit Current Rating; refer to SCCR Accessory table, up to 200kA

NOTE: Units are rated at 208/230V, but MOCP & MCA values are calculated at 240V

UNIT DIMENSIONS (IN.)

| MGE9-11 | | | | | |
|------------------|-------|-------|-------|-----|-------|
| Model | A | B | C | D | E |
| MGE9**-7-11-12*P | 65.50 | 22.45 | 18.63 | 6.0 | 24.63 |
| MGE9**-7-11-18*P | 67.50 | 24.45 | 20.63 | 6.0 | 26.63 |
| MGE9**-7-11-24*P | | | | | |
| MGE9**-7-11-30*P | 71.50 | 28.45 | 24.63 | 6.0 | 30.63 |



* Provisions must be made to properly drain condensate from the drain pan and provisions must be made to properly drain furnace condensate from drain trap.

MINIMUM CLEARANCES

Accessibility Clearances

The front of the unit must be accessible for service. A minimum clearance of 30" in front of unit is required for service.

If the unit is enclosed, a door or access panel aligned with the front of the unit is the preferred method of providing access. The door or access panel opening must be a minimum of 30" wide (centered on the unit) and be as tall as the unit.

IMPORTANT

The unit must be installed with approved wall sleeve and louver accessories for safe operation. Improper installations could result in property damage, personal injury, or death.

Supply Duct Clearances

| Minimum Clearances to Combustible Materials ¹ | | |
|--|-------|-----|
| Front | Sides | Top |
| 0" | 0" | 0" |

¹ Accessibility clearances take precedence

Unit Clearances

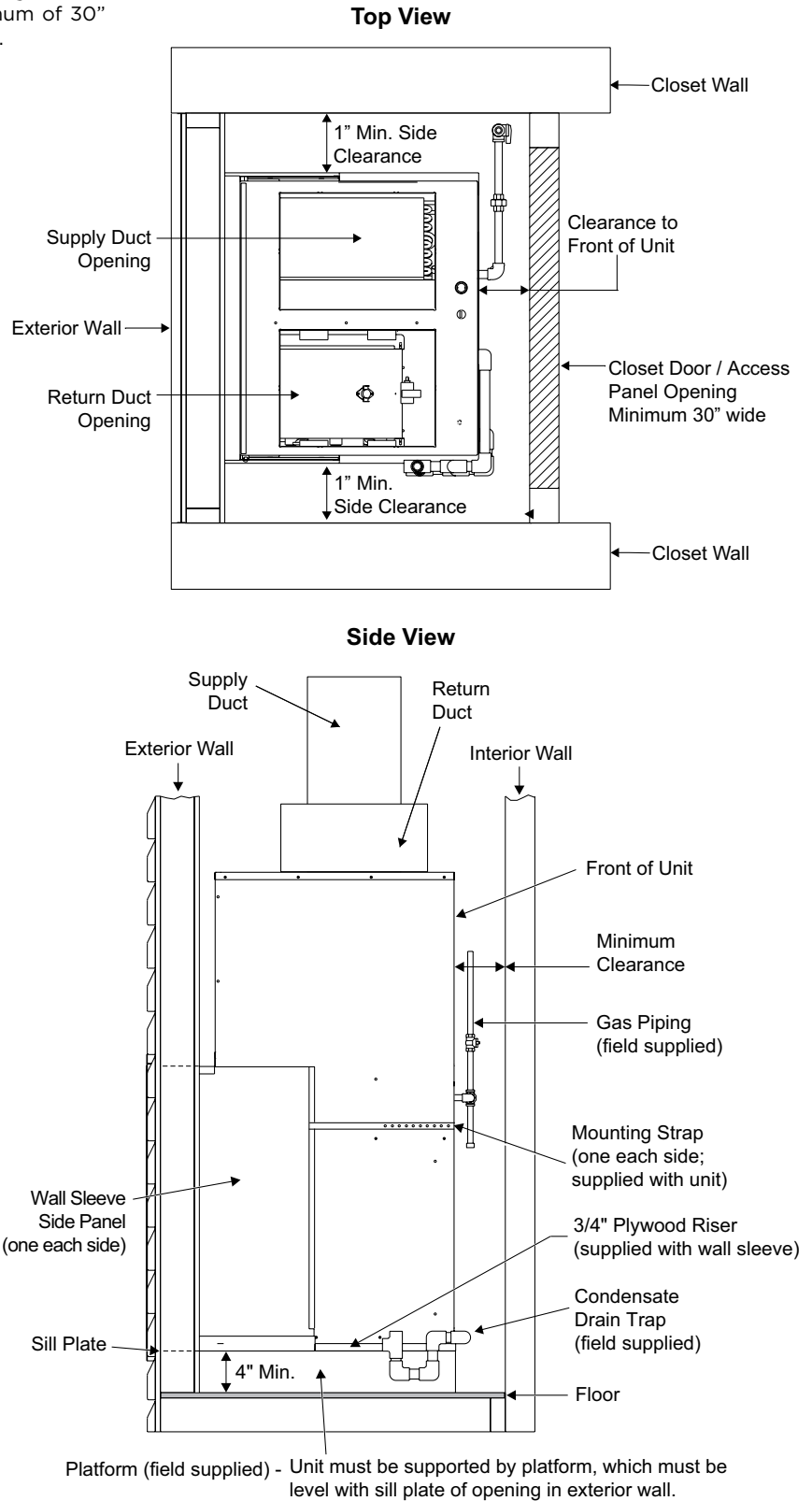
| Minimum Clearances ¹ | |
|---------------------------------|--------------------|
| Front ² | Sides ³ |
| 1" | 1" |

¹ Accessibility clearances take precedence

² Clearance must accommodate field-installed condensate drain line (heating and cooling) / drain trap and gas line

³ Additional clearance required if field-installed condensate drain line (heating and cooling) / drain trap is routing alongside unit

NOTE: Consult local codes for other clearance requirements



OUTDOOR SOUND RATING & CABINET AIR LEAKAGE

| Model | Outdoor Sound Rating (dBA) ¹ | Cabinet Air Leakage (%) ² |
|------------------|---|--------------------------------------|
| MGE9**-7-11-12*P | 75 | 2.0 |
| MGE9**-7-11-18*P | 75 | 1.4 |
| MGE9**-7-11-24*P | 75 | 1.4 |
| MGE9**-7-11-30*P | 76 | 1.4 |

¹ Per ANSI / AHRI Standard 270

² Per ASHRAE Standard 193

REFRIGERANT DETECTION SYSTEM KIT (RDS)

| Model | Kit |
|-----------------|---------|
| MGE9*-7-11-12*P | ARDSKTM |
| MGE9*-7-11-18*P | |
| MGE9*-7-11-24*P | |

FACTORY FILTER SIZE (IN.) AND PRESSURE DROP (IN. W.C.)

| Model | Filter Size | Indoor Airflow (CFM) | | | | | | | | | | | | | | | | | |
|-------|--------------------------|----------------------|------|------|------|------|------|------|------|------|------|------|------|------|------|------|------|------|------|
| | | 200 | 250 | 300 | 350 | 400 | 450 | 500 | 550 | 600 | 650 | 700 | 750 | 800 | 850 | 900 | 950 | 1000 | 1050 |
| All | 12 x 24 x 1 ¹ | 0.01 | 0.02 | 0.03 | 0.04 | 0.04 | 0.05 | 0.08 | 0.09 | 0.10 | 0.12 | 0.14 | 0.15 | 0.17 | 0.18 | 0.20 | 0.22 | 0.24 | 0.26 |

¹ Effective filter area 12 x 16.

If a higher resistance filter is field installed within the unit, the added resistance must be included as additional system static pressure.

SCCR ACCESSORY

| Model | Kit ¹ |
|------------------|------------------|
| MGE9**-7-11-12*P | ASCCR1 |
| MGE9**-7-11-18*P | |
| MGE9**-7-11-24*P | |
| MGE9**-7-11-30*P | ASCCR3 |

¹ Per UL 508A, 200kA RMS Symmetrical

LP CONVERSION KIT

| Model | Kit |
|------------------|----------|
| MGE920-7-11-***P | ALPKT615 |
| MGE930-7-11-***P | |
| MGE940-7-11-***P | |
| MGE950-7-11-***P | |

HIGH ALTITUDE APPLICATION DATA

| Altitude | Natural Gas | | LP Gas | |
|-------------------|----------------------------|-------------------|----------------------------|-------------------|
| | Burner Orifices | Manifold Pressure | Burner Orifices LP Kit | Manifold Pressure |
| 0-5,500 ft. | As shipped | 3.5" w.c. | ALPKT615 | 10.0" w.c. |
| 5,500 - 8,500 ft. | | 3.0" w.c. | | 8.0" w.c. |
| Above 8,500 ft. | Per National Fuel Gas Code | 3.5" w.c. | Per National Fuel Gas Code | 10.0" w.c. |

WALL SLEEVES & LOUVERS

| Wall Sleeves | | Louvers | | | Model | | | | Dimensions (in.) | | | |
|--------------|-----------------------|-----------------------|------------------|----------------|------------------|------------------|------------------|------------------|------------------------|-------------------------|------------------------|-----------------------|
| Wall Sleeve | Wall Sleeve Extension | Polypropylene Louvers | Aluminum Louvers | Impact Louvers | MGE9**-7-11-12*P | MGE9**-7-11-18*P | MGE9**-7-11-24*P | MGE9**-7-11-30*P | Wall Sleeve Height (A) | Wall Opening Height (B) | Wall Opening Depth (C) | |
| | | | | | | | | | | | Sleeve Only | Sleeve Plus Extension |
| ASLEEVE6-1 | --- | ALVRP***MGE-1 | ALVRAL-1^ | ALVRALC-1^ | • | • | • | | 29 | 29-1/8 | 6 | --- |
| ASLEEVE8-1 | --- | ALVRP***MGE-1 | ALVRAL-1^ | ALVRALC-1^ | • | • | • | | 29 | 29-1/8 | 8 | --- |
| ASLEEVE10-1 | ASLEEVEEXT4-1 | ALVRP***MGE-1 | ALVRAL-1^ | ALVRALC-1^ | • | • | • | | 29 | 29-1/8 | 10 | 14 |
| ASLEEVE12-1 | ASLEEVEEXT4-1 | ALVRP***MGE-1 | ALVRAL-1^ | ALVRALC-1^ | • | • | • | | 29 | 29-1/8 | 12 | 16 |
| ASLEEVE6-2 | --- | ALVRP***MGE-2 | ALVRAL-2^ | ALVRALC-2^ | | | | • | 32-3/4 | 32-7/8 | 6 | --- |
| ASLEEVE8-2 | --- | ALVRP***MGE-2 | ALVRAL-2^ | ALVRALC-2^ | | | | • | 32-3/4 | 32-7/8 | 8 | --- |
| ASLEEVE10-2 | ASLEEVEEXT4-2 | ALVRP***MGE-2 | ALVRAL-2^ | ALVRALC-2^ | | | | • | 32-3/4 | 32-7/8 | 10 | 14 |
| ASLEEVE12-2 | ASLEEVEEXT4-2 | ALVRP***MGE-2 | ALVRAL-2^ | ALVRALC-2^ | | | | • | 32-3/4 | 32-7/8 | 12 | 16 |
| ASLEEVE6-2 | --- | --- | ALVRAL-7^ | ALVRALC-7^ | ○ | ○ | ○ | | 32-3/4 | 32-7/8 | 6 | --- |
| ASLEEVE8-2 | --- | --- | ALVRAL-7^ | ALVRALC-7^ | ○ | ○ | ○ | | 32-3/4 | 32-7/8 | 8 | --- |
| ASLEEVE10-2 | ASLEEVEEXT4-2 | --- | ALVRAL-7^ | ALVRALC-7^ | ○ | ○ | ○ | | 32-3/4 | 32-7/8 | 10 | 14 |
| ASLEEVE12-2 | ASLEEVEEXT4-2 | --- | ALVRAL-7^ | ALVRALC-7^ | ○ | ○ | ○ | | 32-3/4 | 32-7/8 | 12 | 16 |
| ASLEEVE6-5 | --- | --- | ALVRAL-3^ | ALVRALC-3^ | ○ | ○ | ○ | | 45 | 45-1/8 | 6 | --- |
| ASLEEVE8-5 | --- | --- | ALVRAL-3^ | ALVRALC-3^ | ○ | ○ | ○ | | 45 | 45-1/8 | 8 | --- |
| ASLEEVE10-5 | ASLEEVEEXT4-3 | --- | ALVRAL-3^ | ALVRALC-3^ | ○ | ○ | ○ | | 45 | 45-1/8 | 10 | 14 |
| ASLEEVE12-5 | ASLEEVEEXT4-3 | --- | ALVRAL-3^ | ALVRALC-3^ | ○ | ○ | ○ | | 45 | 45-1/8 | 12 | 16 |
| ASLEEVE6-5 | --- | ALVRP***MGE-3 | | | | | | | 45 | 45-1/8 | 6 | --- |
| ASLEEVE8-5 | --- | ALVRP***MGE-3 | | | | | | | 45 | 45-1/8 | 8 | --- |
| ASLEEVE10-5 | ASLEEVEEXT4-3 | ALVRP***MGE-3 | | | | | | | 45 | 45-1/8 | 10 | 14 |
| ASLEEVE12-5 | ASLEEVEEXT4-3 | ALVRP***MGE-3 | | | | | | | 45 | 45-1/8 | 12 | 16 |
| ASLEEVE6-5 | --- | --- | ALVRAL-4^ | ALVRALC-4^ | | | | ○ | 45 | 45-1/8 | 6 | --- |
| ASLEEVE8-5 | --- | --- | ALVRAL-4^ | ALVRALC-4^ | | | | ○ | 45 | 45-1/8 | 8 | --- |
| ASLEEVE10-5 | ASLEEVEEXT4-3 | --- | ALVRAL-4^ | ALVRALC-4^ | | | | ○ | 45 | 45-1/8 | 10 | 14 |
| ASLEEVE12-5 | ASLEEVEEXT4-3 | --- | ALVRAL-4^ | ALVRALC-4^ | | | | ○ | 45 | 45-1/8 | 12 | 16 |

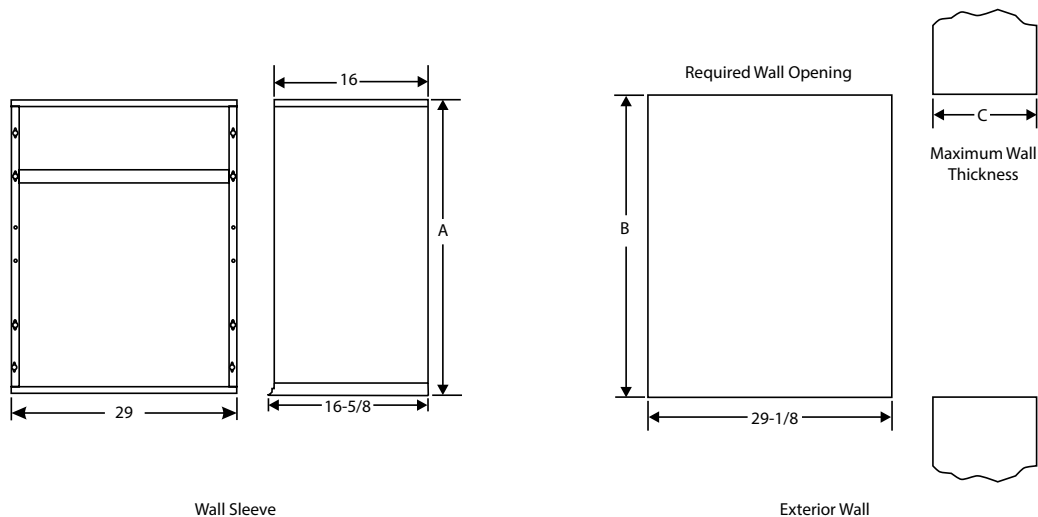
*** Louver colors: WHT = white, SAN = sandstone, BGE = beige, TPST = taupestone

^ -P: Option to paint standard, aluminum, and impact-resistant louver

○ Optional: Wall sleeves and louvers can be oversized to maintain a uniform appearance

NOTE: ALVRP*MGE louvers may not be oversized due to vent pipe and metal grate insert location**

WALL SLEEVE & WALL OPENING DIMENSIONS (IN.)



RATED COOLING & HEATING PERFORMANCE

| Tonnage | Model | Cooling | | | Gas Heating | | | |
|---------|-----------------|-----------------------|------------|------|--------------------|--------------------|----------------------|---------------------|
| | | Net Capacity (Btu/hr) | Efficiency | S/T^ | Input (Btu/hr) | Output (Btu/hr) | Rise Range (F°) | Efficiency AFUE (%) |
| | | | SEER2/EER2 | | | | | |
| 1.0 | MGE920-7-11-12* | 12,000 | 11.7/10.5 | 0.75 | 20,000 (15,000) | 19,000 (14,250) | 25 - 55 (15 - 45) | 95 |
| | MGE930-7-11-12* | | | | 30,000 (22,500) | 28,500 (21,375) | 25 - 55 (15 - 45) | |
| 1.5 | MGE920-7-11-18* | 16,900 | 11.7/10.0 | 0.79 | 20,000 (15,000) | 19,000 (14,250) | 25 - 55 (15 - 45) | 95 |
| | MGE930-7-11-18* | | | | 30,000 (22,500) | 28,500 (21,375) | 25 - 55 (15 - 45) | |
| 2.0 | MGE930-7-11-24* | 21,800 | 11.7/10.0 | 0.79 | 30,000 (22,500) | 28,500 (21,375) | 25 - 55 (15 - 45) | 95 |
| | MGE940-7-11-24* | | | | 40,000 (30,000) | 38,000 (28,500) | 25 - 55 (15 - 45) | |
| | MGE950-7-11-24* | | | | 50,000 (37,500) | 47,500 (35,625) | 25 - 55 (20 - 50) | |
| 2.5 | MGE930-7-11-30* | 27,600 | 11.7/10.0 | 0.75 | 30,000 (22,500) | 28,500 (21,375) | 25 - 55 (15 - 45) | 95 |
| | MGE940-7-11-30* | | | | 40,000 (30,000) | 38,000 (28,500) | 25 - 55 (15 - 45) | |
| | MGE950-7-11-30* | | | | 50,000 (37,500) | 47,500 (35,625) | 25 - 55 (20 - 50) | |

* Not a rated value

S/T = ratio of sensible to total cooling load

For most up to date ratings and values, please view AHRI listing (Low Fire)

EXTENDED COOLING PERFORMANCE DATA

| Tonnage | Model | Indoor Temp DB/WB (°F) | Outdoor Temperature - DB (°F) | | | | | | | | | | | | | | |
|---------|------------------|------------------------------|-------------------------------|------|----------------------------------|-----------------------------|------|----------------------------------|-----------------------------|------|----------------------------------|-----------------------------|------|----------------------------------|-----------------------------|------|----------------------------------|
| | | | 65 | | | 85 | | | 95 | | | 105 | | | 115 | | |
| | | | Net Capacity (Btu/hr) | S/T | System Power Input (kW) | Net Capacity (Btu/hr) | S/T | System Power Input (kW) | Net Capacity (Btu/hr) | S/T | System Power Input (kW) | Net Capacity (Btu/hr) | S/T | System Power Input (kW) | Net Capacity (Btu/hr) | S/T | System Power Input (kW) |
| 1.0 | MGE9**-7-11-12*P | 85/72 | 14410 | 0.60 | 0.92 | 14370 | 0.63 | 1.07 | 14070 | 0.66 | 1.17 | 13650 | 0.69 | 1.29 | 12700 | 0.73 | 1.41 |
| | | 80/67 | 13870 | 0.67 | 0.91 | 13600 | 0.71 | 1.07 | 13070 | 0.74 | 1.17 | 12430 | 0.78 | 1.28 | 11420 | 0.82 | 1.40 |
| | | 75/63 | 13200 | 0.70 | 0.91 | 12940 | 0.75 | 1.07 | 12350 | 0.78 | 1.17 | 11490 | 0.81 | 1.28 | 10320 | 0.86 | 1.39 |
| | | 75/57 | 12460 | 1.00 | 0.91 | 12220 | 1.00 | 1.08 | 11580 | 1.00 | 1.17 | 11120 | 1.00 | 1.27 | 9720 | 1.00 | 1.39 |
| 1.5 | MGE9**-7-11-18*P | 85/72 | 18750 | 0.60 | 1.18 | 18550 | 0.65 | 1.41 | 18790 | 0.68 | 1.54 | 17890 | 0.71 | 1.70 | 16980 | 0.75 | 1.86 |
| | | 80/67 | 17950 | 0.67 | 1.18 | 17810 | 0.74 | 1.41 | 17780 | 0.76 | 1.55 | 16730 | 0.81 | 1.70 | 15220 | 0.85 | 1.86 |
| | | 75/63 | 17290 | 0.71 | 1.18 | 16990 | 0.78 | 1.41 | 16500 | 0.81 | 1.54 | 15260 | 0.84 | 1.69 | 13870 | 0.88 | 1.85 |
| | | 75/57 | 16510 | 1.00 | 1.17 | 16180 | 1.00 | 1.41 | 15640 | 1.00 | 1.53 | 14360 | 1.00 | 1.68 | 13430 | 1.00 | 1.84 |
| 2.0 | MGE9**-7-11-24*P | 85/72 | 25380 | 0.61 | 1.56 | 25340 | 0.67 | 1.91 | 23830 | 0.69 | 2.10 | 22700 | 0.73 | 2.32 | 20680 | 0.77 | 2.54 |
| | | 80/67 | 24390 | 0.69 | 1.56 | 23680 | 0.75 | 1.90 | 22220 | 0.78 | 2.09 | 20660 | 0.84 | 2.30 | 18770 | 0.88 | 2.52 |
| | | 75/63 | 23420 | 0.72 | 1.56 | 22290 | 0.80 | 1.90 | 20670 | 0.82 | 2.08 | 19180 | 0.86 | 2.29 | 17230 | 0.91 | 2.50 |
| | | 75/57 | 22640 | 1.00 | 1.56 | 21470 | 1.00 | 1.90 | 19380 | 1.00 | 2.08 | 18410 | 1.00 | 2.28 | 16520 | 1.00 | 2.50 |
| 2.5 | MGE9**-7-11-30*P | 85/72 | 31500 | 0.65 | 2.03 | 30160 | 0.66 | 2.42 | 29590 | 0.67 | 2.66 | 28530 | 0.69 | 2.92 | 26520 | 0.70 | 3.23 |
| | | 80/67 | 29540 | 0.70 | 2.00 | 28960 | 0.72 | 2.41 | 28100 | 0.74 | 2.63 | 26950 | 0.77 | 2.91 | 24040 | 0.78 | 3.21 |
| | | 75/63 | 28320 | 0.72 | 2.00 | 27690 | 0.76 | 2.40 | 26630 | 0.78 | 2.63 | 25140 | 0.81 | 2.90 | 22580 | 0.83 | 3.19 |
| | | 75/57 | 27190 | 1.00 | 2.00 | 26650 | 1.00 | 2.39 | 24850 | 1.00 | 2.63 | 24230 | 1.00 | 2.89 | 22360 | 1.00 | 3.17 |

NOTE: Values based on 0.3" w.c. external static pressure

BLOWER PERFORMANCE

- Performance based on factory-provided washable filter installed in the unit.
- If a higher resistance filter is field installed in the unit, the added resistance must be included in the external static pressure and must not exceed 0.5 in. w.c. including ductwork.
- Refer to Factory Filter Size and Pressure Drop table for additional details.

| | | | | SUPPLY AIRFLOW PERFORMANCE AS A FUNCTION OF EXTERNAL STATIC PRESSURE | | | | | | | | | | | | | | | |
|---------|------------------|----------------------|---------------|--|-----------|-------|-----------|-----------|-------|-----------|-----------|-------|-----------|-----------|-------|-----------|-----------|-------|-----------|
| Tonnage | Model | Gas Heating | | Indoor Blower Speed | 0.1" w.c. | | | 0.2" w.c. | | | 0.3" w.c. | | | 0.4" w.c. | | | 0.5" w.c. | | |
| | | Rise Range (F°) | Mid Rise (F°) | | SCFM | Watts | Temp Rise | SCFM | Watts | Temp Rise | SCFM | Watts | Temp Rise | SCFM | Watts | Temp Rise | SCFM | Watts | Temp Rise |
| 1.0 | MGE920-7-11-12NP | 25 - 55 (15 - 45) | 40 (30) | TAP 1 (FAN) | 380 | 55 | --- | 330 | 58 | --- | 280 | 60 | --- | 230 | 63 | --- | --- | --- | --- |
| | | | | TAP 2 (COOL) | 490 | 80 | --- | 450 | 84 | --- | 410 | 87 | --- | 365 | 89 | --- | 320 | 92 | --- |
| | | | | TAP 3 (COOL)† | 520 | 91 | --- | 480 | 94 | --- | 440 | 97 | --- | 405 | 100 | --- | 365 | 103 | --- |
| | | | | TAP 4 (HEAT)* | 425 | 65 | 41 | 380 | 68 | 46 | 340 | 71 | 51.74 | 290 | 74 | 61 | --- | --- | --- |
| | | | | TAP 5 (HEAT)# | 425 | 65 | 31 | 380 | 68 | 35 | 340 | 71 | 38.81 | 290 | 74 | 45 | --- | --- | --- |
| | MGE930-7-11-12NP | 25 - 55 (15 - 45) | 40 (30) | TAP 1 (FAN) | 380 | 55 | --- | 330 | 58 | --- | 280 | 60 | --- | 230 | 63 | --- | --- | --- | --- |
| | | | | TAP 2 (COOL) | 490 | 80 | --- | 450 | 84 | --- | 410 | 87 | --- | 365 | 89 | --- | 320 | 92 | --- |
| | | | | TAP 3 (COOL)† | 520 | 91 | --- | 480 | 94 | --- | 440 | 97 | --- | 405 | 100 | --- | 365 | 103 | --- |
| | | | | TAP 4 (HEAT)* | 660 | 151 | 40 | 630 | 156 | 42 | 590 | 159 | 45 | 560 | 162 | 47 | 530 | 162 | 50 |
| | | | | TAP 5 (HEAT)# | 660 | 151 | 30 | 630 | 156 | 31 | 590 | 159 | 34 | 560 | 162 | 35 | 530 | 162 | 37 |
| 1.5 | MGE920-7-11-18NP | 25 - 55 (15 - 45) | 40 (30) | TAP 1 (FAN) | 490 | 80 | --- | 450 | 84 | --- | 410 | 87 | --- | 365 | 89 | --- | 320 | 92 | --- |
| | | | | TAP 2 (COOL) | 660 | 151 | 39.98 | 630 | 156 | 41.89 | 590 | 159 | 44.73 | 560 | 162 | 47.12 | 530 | 162 | 49.79 |
| | | | | TAP 3 (COOL)† | 710 | 176 | --- | 680 | 181 | --- | 645 | 185 | --- | 615 | 188 | --- | 585 | 192 | --- |
| | | | | TAP 4 (HEAT)* | 425 | 65 | 41 | 380 | 68 | 46 | 340 | 71 | 52 | 290 | 74 | 61 | --- | --- | --- |
| | | | | TAP 5 (HEAT)# | 425 | 65 | 31 | 380 | 68 | 35 | 340 | 71 | 39 | 290 | 74 | 45 | --- | --- | --- |
| | MGE930-7-11-18NP | 25 - 55 (15 - 45) | 40 (30) | TAP 1 (FAN) | 490 | 80 | --- | 450 | 84 | --- | 410 | 87 | --- | 365 | 89 | --- | 320 | 92 | --- |
| | | | | TAP 2 (COOL) | 660 | 151 | 39.98 | 630 | 156 | 41.89 | 590 | 159 | 44.73 | 560 | 162 | 47.12 | 530 | 162 | 49.79 |
| | | | | TAP 3 (COOL)† | 710 | 176 | --- | 680 | 181 | --- | 645 | 185 | --- | 615 | 188 | --- | 585 | 192 | --- |
| | | | | TAP 4 (HEAT)* | 660 | 151 | 40 | 630 | 156 | 42 | 590 | 159 | 45 | 560 | 162 | 47 | 530 | 162 | 50 |
| | | | | TAP 5 (HEAT)# | 660 | 151 | 30 | 630 | 156 | 31 | 590 | 159 | 34 | 560 | 162 | 35 | 530 | 162 | 37 |

N/A: Do not operate unit using this blower speed at this external static pressure.

* As shipped speed for Cooling operation. Blower speed must be field adjusted to speed Tap 2 for lower duct static applications.

* As shipped speed for Low Stage heating operation.

As shipped speed for High Stage heating operation.

SCFM = standard cubic feet per minute

BLOWER PERFORMANCE CONTINUED

- Performance based on factory-provided washable filter installed in the unit.
- If a higher resistance filter is field installed in the unit, the added resistance must be included in the external static pressure and must not exceed 0.5 in. w.c. including ductwork.
- Refer to Factory Filter Size and Pressure Drop table for additional details.

| | | | | SUPPLY AIRFLOW PERFORMANCE AS A FUNCTION OF EXTERNAL STATIC PRESSURE | | | | | | | | | | | | | | | |
|---------|------------------|----------------------|---------------|--|-----------|-------|-----------|-----------|-------|-----------|-----------|-------|-----------|-----------|-------|-----------|-----------|-------|-----------|
| Tonnage | Model | Gas Heating | | Indoor Blower Speed | 0.1" w.c. | | | 0.2" w.c. | | | 0.3" w.c. | | | 0.4" w.c. | | | 0.5" w.c. | | |
| | | Rise Range (F°) | Mid Rise (F°) | | SCFM | Watts | Temp Rise | SCFM | Watts | Temp Rise | SCFM | Watts | Temp Rise | SCFM | Watts | Temp Rise | SCFM | Watts | Temp Rise |
| 2.0 | MGE930-7-11-24NP | 25 - 55 (15 - 45) | 40 (30) | TAP 1 (FAN) | 480 | 81 | --- | 440 | 84 | --- | 400 | 87 | --- | 365 | 89 | --- | 320 | 92 | --- |
| | | | | TAP 2 (COOL) | 815 | 254 | --- | 785 | 258 | --- | 760 | 262 | --- | 735 | 266 | --- | 705 | 272 | --- |
| | | | | TAP 3 (COOL)† | 840 | 273 | --- | 810 | 277 | --- | 785 | 281 | --- | 760 | 285 | --- | 730 | 291 | --- |
| | | | | TAP 4 (HEAT)* | 660 | 151 | 40 | 630 | 156 | 42 | 590 | 159 | 45 | 560 | 162 | 47 | 530 | 162 | 50 |
| | | | | TAP 5 (HEAT)# | 660 | 151 | 30 | 630 | 156 | 31 | 590 | 159 | 34 | 560 | 162 | 35 | 530 | 162 | 37 |
| | MGE940-7-11-24NP | 25 - 55 (15 - 45) | 40 (30) | TAP 1 (FAN) | 480 | 81 | --- | 440 | 84 | --- | 400 | 87 | --- | 365 | 89 | --- | 320 | 92 | --- |
| | | | | TAP 2 (COOL) | 815 | 254 | --- | 785 | 258 | --- | 760 | 262 | --- | 735 | 266 | --- | 705 | 272 | --- |
| | | | | TAP 3 (COOL)† | 840 | 273 | --- | 810 | 277 | --- | 785 | 281 | --- | 760 | 285 | --- | 730 | 291 | --- |
| | | | | TAP 4 (HEAT)* | 795 | 234 | 44 | 760 | 238 | 46 | 735 | 243 | 48 | 710 | 247 | 50 | 680 | 252 | 52 |
| | | | | TAP 5 (HEAT)# | 795 | 234 | 33 | 760 | 238 | 35 | 735 | 243 | 36 | 710 | 247 | 37 | 680 | 252 | 39 |
| | MGE950-7-11-24NP | 25 - 55 (20 - 50) | 40 (35) | TAP 1 (FAN) | 480 | 81 | --- | 440 | 84 | --- | 400 | 87 | --- | 365 | 89 | --- | 320 | 92 | --- |
| | | | | TAP 2 (COOL) | 815 | 254 | --- | 785 | 258 | --- | 760 | 262 | --- | 735 | 266 | --- | 705 | 272 | --- |
| | | | | TAP 3 (COOL)† | 840 | 273 | --- | 810 | 277 | --- | 785 | 281 | --- | 760 | 285 | --- | 730 | 291 | --- |
| | | | | TAP 4 (HEAT)* | 970 | 387 | 45 | 940 | 386 | 47 | 910 | 385 | 48 | 880 | 384 | 50 | 845 | 383 | 52 |
| | | | | TAP 5 (HEAT)# | 970 | 387 | 34 | 940 | 386 | 35 | 910 | 385 | 36 | 880 | 384 | 37 | 845 | 383 | 39 |

N/A: Do not operate unit using this blower speed at this external static pressure.

* As shipped speed for Cooling operation. Blower speed must be field adjusted to speed Tap 2 for lower duct static applications.

* As shipped speed for Low Stage heating operation.

As shipped speed for High Stage heating operation.

SCFM = standard cubic feet per minute

BLOWER PERFORMANCE CONTINUED

- Performance based on factory-provided washable filter installed in the unit.
- If a higher resistance filter is field installed in the unit, the added resistance must be included in the external static pressure and must not exceed 0.5 in. w.c. including ductwork.
- Refer to Factory Filter Size and Pressure Drop table for additional details.

| | | | | SUPPLY AIRFLOW PERFORMANCE AS A FUNCTION OF EXTERNAL STATIC PRESSURE | | | | | | | | | | | | | | | |
|---------|------------------|----------------------|---------------|--|-----------|-------|-----------|-----------|-------|-----------|-----------|-------|-----------|-----------|-------|-----------|-----------|-------|-----------|
| Tonnage | Model | Gas Heating | | Indoor Blower Speed | 0.1" w.c. | | | 0.2" w.c. | | | 0.3" w.c. | | | 0.4" w.c. | | | 0.5" w.c. | | |
| | | Rise Range (F°) | Mid Rise (F°) | | SCFM | Watts | Temp Rise | SCFM | Watts | Temp Rise | SCFM | Watts | Temp Rise | SCFM | Watts | Temp Rise | SCFM | Watts | Temp Rise |
| 2.5 | MGE930-7-11-30NP | 25 - 55 (15 - 45) | 40 (30) | TAP 1 (FAN) | 650 | 145 | --- | 620 | 147 | --- | 575 | 151 | --- | 540 | 154 | --- | 510 | 158 | --- |
| | | | | TAP 2 (COOL) | 935 | 350 | --- | 910 | 352 | --- | 875 | 351 | --- | 840 | 350 | --- | 805 | 349 | --- |
| | | | | TAP 3 (COOL)† | 950 | 366 | --- | 915 | 365 | --- | 890 | 364 | --- | 855 | 363 | --- | 820 | 362 | --- |
| | | | | TAP 4 (HEAT)* | 660 | 151 | 40 | 630 | 156 | 42 | 590 | 159 | 45 | 560 | 162 | 47 | 530 | 162 | 50 |
| | | | | TAP 5 (HEAT)# | 660 | 151 | 30 | 630 | 156 | 31 | 590 | 159 | 34 | 560 | 162 | 35 | 530 | 162 | 37 |
| | MGE940-7-11-30NP | 25 - 55 (15 - 45) | 40 (30) | TAP 1 (FAN) | 650 | 145 | --- | 620 | 147 | --- | 575 | 151 | --- | 540 | 154 | --- | 510 | 158 | --- |
| | | | | TAP 2 (COOL) | 935 | 350 | --- | 910 | 352 | --- | 875 | 351 | --- | 840 | 350 | --- | 805 | 349 | --- |
| | | | | TAP 3 (COOL)† | 950 | 366 | --- | 915 | 365 | --- | 890 | 364 | --- | 855 | 363 | --- | 820 | 362 | --- |
| | | | | TAP 4 (HEAT)* | 795 | 234 | 44 | 760 | 238 | 46 | 735 | 243 | 48 | 710 | 247 | 50 | 680 | 252 | 52 |
| | | | | TAP 5 (HEAT)# | 795 | 234 | 33 | 760 | 238 | 35 | 735 | 243 | 36 | 710 | 247 | 37 | 680 | 252 | 39 |
| | MGE950-7-11-30NP | 25 - 55 (20 - 50) | 40 (35) | TAP 1 (FAN) | 650 | 145 | --- | 620 | 147 | --- | 575 | 151 | --- | 540 | 154 | --- | 510 | 158 | --- |
| | | | | TAP 2 (COOL) | 935 | 350 | --- | 910 | 352 | --- | 875 | 351 | --- | 840 | 350 | --- | 805 | 349 | --- |
| | | | | TAP 3 (COOL)† | 950 | 366 | --- | 915 | 365 | --- | 890 | 364 | --- | 855 | 363 | --- | 820 | 362 | --- |
| | | | | TAP 4 (HEAT)* | 970 | 387 | 45 | 940 | 386 | 47 | 910 | 385 | 48 | 880 | 384 | 50 | 845 | 383 | 52 |
| | | | | TAP 5 (HEAT)# | 970 | 387 | 34 | 940 | 386 | 35 | 910 | 385 | 36 | 880 | 384 | 37 | 845 | 383 | 39 |

N/A: Do not operate unit using this blower speed at this external static pressure.

* As shipped speed for Cooling operation. Blower speed must be field adjusted to speed Tap 2 for lower duct static applications.

* As shipped speed for Low Stage heating operation.

As shipped speed for High Stage heating operation.

SCFM = standard cubic feet per minute



215 Metropolitan Drive | West Columbia, SC 29170

800-448-5872

Product Support 866-282-7257

www.magic-pak.com

All specifications and illustrations subject to change
without notice and without incurring obligations.