

90%+ AFUE

Gas Furnaces



A SMART CHOICE FOR EFFICIENCY AND EXCEPTIONAL OPERATION, EVEN IN THE COLDEST CLIMATES.

# BUILT FOR LIFE. YOURS.



**AIREASE**<sup>®</sup>

Built for life. Yours.

A close-up photograph of a teal-colored furnace panel. The word "AIREASE" is embossed in white, uppercase letters on a rounded rectangular plaque. The background shows the textured surface of the furnace door with some recessed lines.

**AIREASE**

### **Delivering consistent comfort and peace of mind**

Since 1928, we've been providing homeowners with reliable, well-built heating and cooling products that make life easier and more comfortable. Thoughtfully designed, our AirEase® line of gas furnaces offers an impressive array of technology that makes them extremely quiet, dependable and energy efficient. So you can enjoy peace, quiet and comfort every day of every year.

### **HVAC experts you can trust**

Your comfort is our priority. Your AirEase Dealer will take the time to understand your comfort needs. They know you want the best performance, value and dependability from your heating system, and they have the products and expertise to satisfy these demands. That means you can rely on your AirEase Dealer to help you to find exactly the right comfort solution for your home and your lifestyle.

## Creating the perfect environment.

Choosing the right heating and cooling system for your home environment is a big decision. Your AirEase Dealer can help you create the right system for your home comfort needs. To help you make the best and smartest system choice, here are a few things to consider:



### EFFICIENCY

It's pretty simple. A high-efficiency system helps lower your monthly utility bills. Efficiency is measured in AFUE (Annual Fuel Utilization Efficiency)—the higher this number, the greater the efficiency. Replacing an older unit with a 90%+ AFUE unit or higher can increase performance and start saving you money.



### RELIABILITY

You can always count on your AirEase unit. Our EHX™ Technology and unique burner design work together to deliver premium performance and even heat exchange, which will extend the life of your furnace.



### AIR QUALITY

Where you live matters. Your family's sensitivity to a host of natural and man-made allergens means enhanced air quality is all the more critical in your home. And don't forget humidity levels when you're considering the ideal system for year-round comfort.



### PEACE OF MIND

More control over your comfort—that's our commitment to you. You can see it in our craftsmanship and technology—like our proprietary Comfort Sync™ controls, which allow you to easily monitor your unit's performance and enjoy maximum comfort in your home.



### NOISE REDUCTION

Comfort and performance also include quiet operation of your system. Enjoy quieter start-up and operation with our Quiet Combustion™ Technology.

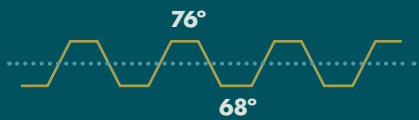




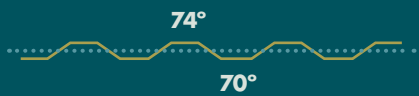
## Furnace System Basics

The most common type of system pairs an interior gas furnace with an exterior air conditioner. Furnaces can also be paired with a heat pump, which is then called a dual-fuel system. Matching your furnace with a compatible AirEase® air conditioner or heat pump will generate optimum efficiency and ideal system performance.

### How gas valves affect temperature control



**Single-Stage:** A reliable, single-stage gas valve provides a consistent gas flow to maintain temperature.

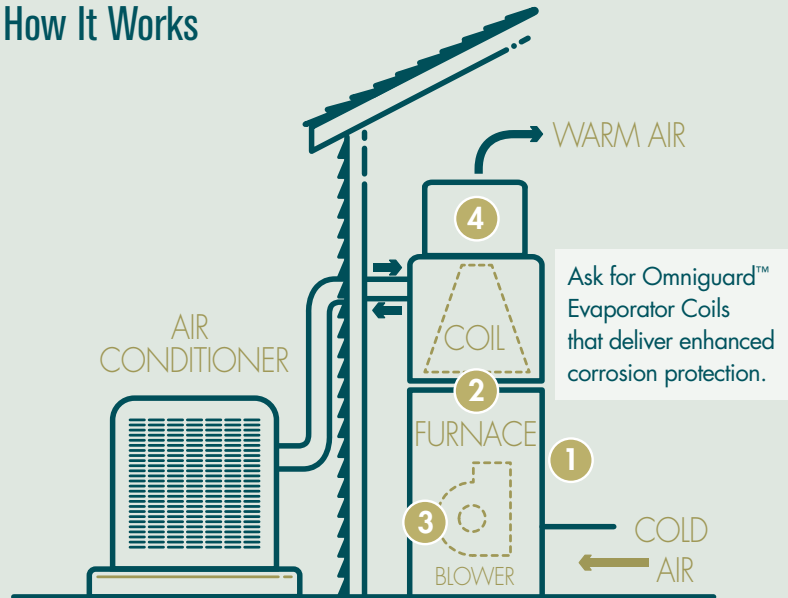


**Two-Stage:** Two-stage gas valve provides a boost in heating, when needed, to enhance comfort.

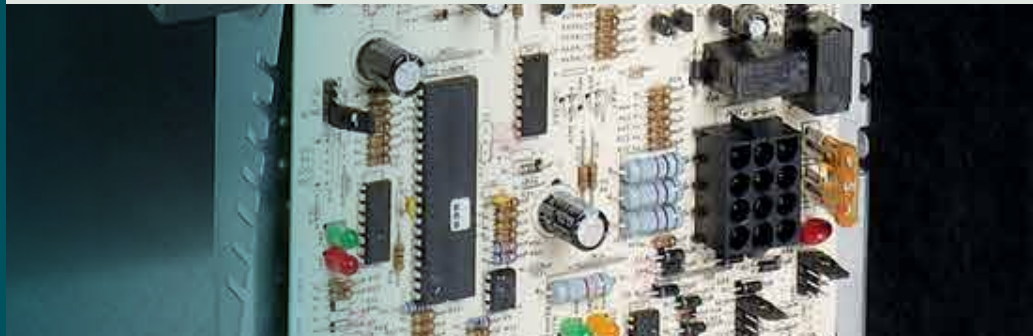


**Modulating:** The gas valve constantly adjusts heating capacity to create even temperatures throughout your home, while also being the most efficient.

## How It Works

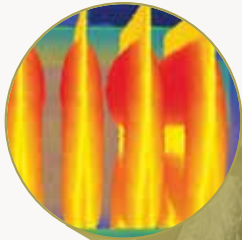


1. When it gets cold inside your home, your thermostat automatically activates your gas furnace to compensate.
2. The burners ignite the gas and create warm air in the heat exchanger.
3. The blower turns on and forces the warm air throughout your home via ducts.
4. Warm air is circulated throughout your home until the desired temperature is achieved.



# Technology designed with your comfort in mind.

Inside every AirEase gas furnace, you'll find a high level of technology and craftsmanship, backed by a Lifetime Limited Warranty on the heat exchanger.\*



Model shown **A97MV**

## Advanced Heat Exchanger:

Made from stainless steel for maximum strength and crimped rather than welded, AirEase heat exchangers are highly resistant to thermal fatigue and other stresses caused by repeated heating and cooling. During the testing process, they are subjected to temperatures that far exceed normal operating ranges, to ensure they will stand up to decades of use.

## EHX™ Technology:

Every AirEase furnace is engineered and built with EHX™ Technology, a patented design that eliminates the hot spots that can shorten furnace life. EHX Technology makes heat exchangers more durable, and with its advanced airflow system, more air contacts the heat exchanger surface area for greater heat transfer into the home, enhancing efficiency and comfort.

## Modulating Gas Valve:

Highly precise system combines a modulating gas valve with variable-speed technology\*\* to deliver consistent temperatures while saving energy. It constantly varies heat and airflow in increments as small as 5%, responding to outdoor conditions and household comfort needs. By comparison, a typical single-stage furnace operates at full heating capacity every time it cycles on.

## Noise Reduction:

Insulated cabinet prevents loss of warm air, while reducing noise from the motor.

## Quiet Combustion™ Technology:

Uses a lower Btu input per burner ensures quieter start-up and operation.

## Comfort Sync® Control Panel:

All Pro Series™ units continuously monitor internal components for optimum performance and fault prevention. It can even work together with your Comfort Sync™ thermostat to notify you and your dealer if repairs or maintenance are needed.\*\*\*

\*Product registration required. Warranty applies to residential applications only. For terms, conditions and exclusions, see full warranty at [airease.com](http://airease.com).

\*\*A962V and A97MV only

\*\*\*A97MV only

# Enjoy reliable, efficient warmth all winter long.



## A931A

### Engineered for high reliability

A single-speed, direct-drive motor provides a consistent flow of warm air to maintain even temperatures throughout your home.

|                               |  |
|-------------------------------|--|
| 93% AFUE                      |  |
| EHX™ Technology               |  |
| Quiet Combustion™ Technology  |  |
| Self-Diagnosing Control Board |  |

|                                       |  |
|---------------------------------------|--|
| Single-Stage Gas Valve                |  |
| Permanent Split Capacitor (PSC) Motor |  |
| Lifetime Warranty on Heat Exchanger*  |  |

## A931E

### Smart design for more efficiency

Featuring a constant torque motor, the A931E delivers energy-saving efficiency and steady air flow for more even temperatures.

|                               |  |
|-------------------------------|--|
| 93% AFUE                      |  |
| EHX™ Technology               |  |
| Quiet Combustion™ Technology  |  |
| Self-Diagnosing Control Board |  |

|                                      |  |
|--------------------------------------|--|
| Single-Stage Gas Valve               |  |
| <b>Constant Torque Blower Motor</b>  |  |
| Lifetime Warranty on Heat Exchanger* |  |

## A951A & A951S

### Reliable design makes for solid performers

The 95% AFUE of these units combined with our patented EHX™ and Quiet Combustion™ technologies lets you save on your gas bill compared to lower AFUEs.

|                               |  |
|-------------------------------|--|
| <b>95% AFUE</b>               |  |
| EHX Technology                |  |
| Quiet Combustion Technology   |  |
| Self-Diagnosing Control Board |  |
| Single-Stage Gas Valve        |  |

|   |  |
|---|--|
| Permanent Split Capacitor (PSC) Motor         |  |
| <b>Stainless Steel Heat Exchanger (A951S)</b> |  |
| Lifetime Warranty on Heat Exchanger*          |  |

## A951E

### Designed to deliver economical warmth

The constant torque motor on the A951E provides an efficient, steady flow of air for more even temperatures. This ENERGY STAR®-certified furnace allows you to save money by more efficiently operating the blower fan motor all year long.

|                               |  |
|-------------------------------|--|
| 95% AFUE                      |  |
| EHX Technology                |  |
| Quiet Combustion Technology   |  |
| Self-Diagnosing Control Board |  |

|                                      |  |
|--------------------------------------|--|
| One-Stage Gas Valve                  |  |
| <b>Constant Torque Blower Motor</b>  |  |
| Stainless Steel Heat Exchanger       |  |
| Lifetime Warranty on Heat Exchanger* |  |



# Advanced engineering delivers energy-saving performance.

## A962E

A standout choice of industry experts



The two-stage heating of the A962E can adjust its heat output based on conditions inside and outside your home. So you use less energy while maintaining comfort.

|                                      |  |
|--------------------------------------|--|
| <b>96% AFUE</b>                      |  |
| <i>EHX Technology</i>                |  |
| <i>Quiet Combustion Technology</i>   |  |
| <i>Self-Diagnosing Control Board</i> |  |

|   |  |
|---|--|
| <b>Two-Stage Gas Valve</b>                  |  |
| <i>Constant Torque Blower Motor</i>         |  |
| <i>Stainless Steel Heat Exchanger</i>       |  |
| <i>Lifetime Warranty on Heat Exchanger*</i> |  |

## A962V

Trusted by professionals in the HVAC business



The Comfort Sync™ enabled A962V offers remote access via smartphone, tablet or laptop to provide greater control. It contains a variable-speed blower, which allows the furnace to adjust humidity levels and create more even temperatures throughout your home, while also enhancing efficiency.

|                                      |  |
|--------------------------------------|--|
| <b>96% AFUE</b>                      |  |
| <i>EHX Technology</i>                |  |
| <i>Quiet Combustion Technology</i>   |  |
| <i>Self-Diagnosing Control Board</i> |  |
| <i>Two-Stage Gas Valve</i>           |  |

|   |  |
|---|--|
| <b>Variable-Speed Blower Motor</b>          |  |
| <b>Comfort Sync™ Enabled</b>                |  |
| <i>Stainless Steel Heat Exchanger</i>       |  |
| <i>Lifetime Warranty on Heat Exchanger*</i> |  |

## A97MV

Professionals only settle for excellence



At 97% AFUE, the A97MV is the ideal choice for indoor comfort and money-saving efficiency. This ENERGY STAR-certified furnace boasts a highly precise system combining a modulating gas valve with variable-speed blower technology for consistent temperatures and overall energy savings.

|                                      |  |
|--------------------------------------|--|
| <b>97% AFUE</b>                      |  |
| <i>EHX Technology</i>                |  |
| <i>Quiet Combustion Technology</i>   |  |
| <i>Self-Diagnosing Control Board</i> |  |
| <b>Modulating Gas Valve</b>          |  |

|   |  |
|---|--|
| <b>Variable-Speed Blower Motor</b>          |  |
| <b>Comfort Sync Enabled</b>                 |  |
| <i>Stainless Steel Heat Exchanger</i>       |  |
| <i>Lifetime Warranty on Heat Exchanger*</i> |  |



AirEase ProSeries™ furnaces are designed to work with Comfort Sync thermostats to unlock optimum performance and deliver maximum control and energy efficiency. For added convenience, you can even monitor and adjust your thermostat remotely using the Comfort Sync app. Comfort Sync also alerts you and your dealer when HVAC repair or maintenance are needed, giving you the peace of mind that comes from knowing that your system is always performing at its best.

\*Ask your Dealer for details.



Long-lasting performance and efficiency      Provides greater control and efficiency      Increases efficiency and heat circulation      Delivers efficient and economical warmth      Advanced design and proven performance      Enhanced performance and features      Delivers maximum control, precision and efficiency

| Features                         | A931A                           | A931E    | A951A & A951S | A951E    | A962E    | A962V    | A97MV    |
|----------------------------------|---------------------------------|----------|---------------|----------|----------|----------|----------|
| AFUE                             | 93%                             | 93%      | 95%           | 95%      | 96%      | 96%      | 97%      |
| EHX™ Technology                  | ●                               | ●        | ●             | ●        | ●        | ●        | ●        |
| Primary Heat Exchanger Material  | Aluminized Steel                | ●        | ● (A951A)     |          |          |          |          |
|                                  | Stainless Steel                 |          | ● (A951S)     | ●        | ●        | ●        | ●        |
| Quiet Combustion™ Technology     | ●                               | ●        | ●             | ●        | ●        | ●        | ●        |
| Self-Diagnosing Control Board    | ●                               | ●        | ●             | ●        | ●        | ●        | ●        |
| Gas Valve                        | 1-Stage Gas Valve               | ●        | ●             | ●        |          |          |          |
|                                  | 2-Stage Gas Valve               |          |               |          | ●        | ●        |          |
|                                  | Modulating                      |          |               |          |          |          | ●        |
| Blower Motor                     | Permanent Split Capacitor (PSC) | ●        | ●             |          |          |          |          |
|                                  | Constant Torque                 |          | ●             |          | ●        | ●        |          |
|                                  | Variable-Speed                  |          |               |          |          |          | ●        |
| Comfort Sync™ Thermostat Enabled |                                 |          |               |          |          | ●        | ●        |
| Warranty on Heat Exchanger*      | Lifetime                        | Lifetime | Lifetime      | Lifetime | Lifetime | Lifetime | Lifetime |

\*10-year limited warranty on parts and a limited lifetime warranty on the heat exchanger. Product registration required. Warranty applies to residential applications only. For terms, conditions and exclusions, see full warranty at [airease.com](http://airease.com).



**AIREASE**  
Built for life. Yours.

**California Only**

If installed in South Coast Air Quality Management District (SCAQMD) only: Unless otherwise noted, these furnaces do not meet the SCAQMD Rule 1111 NOx emission limit (14 ng/J), and thus are subject to a mitigation fee of up to \$450. These furnaces are not eligible for the Clean Air Furnace Rebate Program: [www.CleanAirFurnaceRebate.com](http://www.CleanAirFurnaceRebate.com). If installed in San Joaquin Valley Air Pollution Control District (SJVAPCD) only: Unless otherwise noted, these furnaces do not meet the SJVAPCD Rule 4905 NOx emission limit (14 ng/J), and thus are subject to a mitigation fee of up to \$450.

Due to our policy of continuous improvement, specifications are subject to change without notice.

Printed in U.S.A.

©2019 Allied Air Enterprises LLC, a Lennox International Inc. Company

Form No. JF90FL-300 (1/19) PC91433

