

K-SERIES™

COMMERCIAL PACKAGED ROOFTOP UNITS
2- TO 25-TON KG/KC/KH MODELS

UP TO 14.0 SEER,
14.8 IEER AND 12.5 EER



ALLIED™
Commercial

PRECISE. VERSATILE. SOLID.

K-Series™ rooftop units are known for precise, dependable performance. Thanks to advanced features and thoughtful product designs, the K-Series is flexible, too, making it an excellent choice for virtually any commercial application.

K-SERIES AT A GLANCE:

Engineered for installation flexibility, energy-efficient performance and easy serviceability

Gas/electric, electric/electric or heat pump units, ranging in sizes from 2 to 25 tons

Optional reheat dehumidification system

EFFICIENCY RATING

Up to 14.0 SEER, 14.8 IEER and 12.5 EER

WARRANTY

15-YEAR LIMITED WARRANTY on stainless steel gas heat exchanger

10-YEAR LIMITED WARRANTY on aluminized gas heat exchanger

5-YEAR LIMITED WARRANTY on compressor

3-YEAR LIMITED WARRANTY on Eco-Last™ coil system

1-YEAR LIMITED WARRANTY on covered components

See warranty certificate for actual details.

OPTIONS FOR OPTIMAL EFFICIENCY

K-Series units can be made up to 27% more efficient with the addition of an optional, Single-Zone VAV (Variable Air Volume) supply fan. K-series units have over 100 field-selectable options to ensure it meets your specific application.

QUICK AND EASY TO INSTALL AND SERVICE

The K-Series has several features designed to reduce both installation and service time:

- Isolated compressor for fast, accurate charge confirmation.
- Slide-out blower for quick and easy cleaning, belt adjustment and parts replacement.
- Easy-to-reach gas compartment for quick and easy analysis and service.

THE LOGISTICAL CHOICE FOR QUICK DELIVERY

The K-Series is versatile and efficient when it comes to shipment, too. Allied Commercial has wholesale distributor partners throughout the U.S. and Canada, which gives you fast, local access to K-Series equipment. So you get the performance you need, when you need it.

[To check availability near you, contact your local Allied Commercial distributor.](#)



TAILOR THE K-SERIES TO YOUR NEEDS

With more than 100 field-installed options to choose from, the K-Series can provide the exact solution for almost any application. K-Series units range from 2 to 25 tons in capacity, and are available in three configurations: gas/electric, electric/electric and heat pump. To view the full list of accessories, please reference the technical specifications.

FIELD-INSTALLED ACCESSORIES

K-Series units include convenient features like plug connections for wiring, panel knock-outs and pre-installed accessory framing. You can choose a stock unit and quickly install accessories, providing immediate relief when you need it.

- Field-powered GFI
- Electric heat
- 50% constant-volume power exhaust fan
- CO₂ sensor
- Return and supply air smoke detectors
- Low ambient kits
- Hail guards
- Coil guards
- LPG conversion kit (gas/electric only)
- Low Temperature Vestibule Heater (gas/electric only)
- Combustion air intake and flue exhaust extensions (gas/electric only)
- Blower Belt Auto-Tensioner
- High Efficiency Air Filters
- Manual outdoor air dampers
- Motorized outdoor air dampers

FACTORY-INSTALLED OPTIONS FOR FAST INSTALLATION

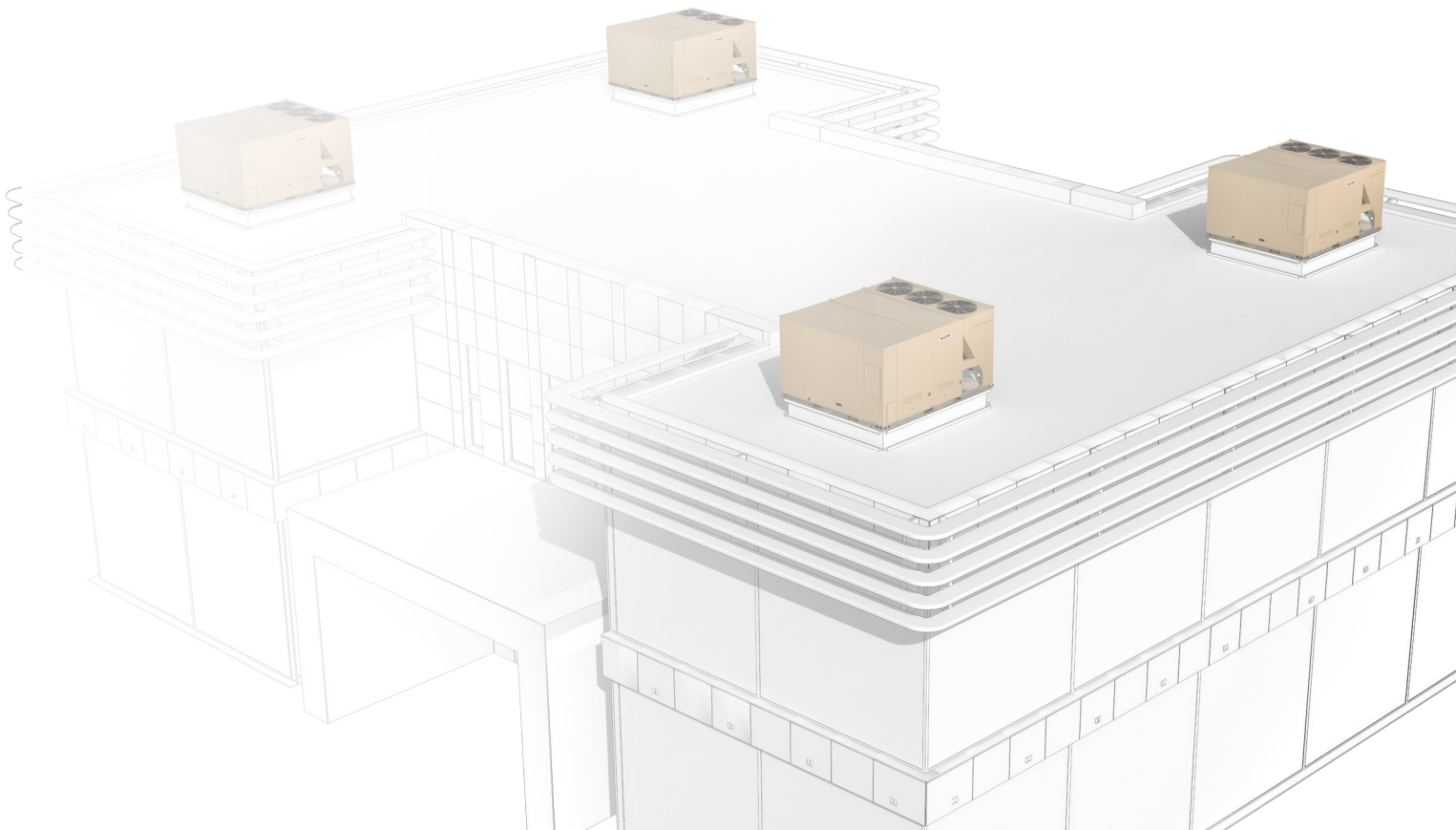
For quick, built-to-order solutions, K-Series units can be built and tested at the factory to exact specifications with these options:

- Single-Zone VAV (Variable Air Volume) supply fan option
- Stainless steel heat exchanger
- Hinged access doors with handles
- Blower supply air motors and drive kits
- Reheat dehumidification system

FACTORY OPTIONS OR FIELD ACCESSORIES

For maximum time and cost flexibility, choose to have these options installed in the field or at the factory:

- Disconnects
- Economizers with single enthalpy control
- Standard or high performance economizers
- Barometric relief dampers
- High- and low-static drive kits
- Heaters (electric/electric only)
- BACnet module



ADVANCED TECHNOLOGY, ADVANCED EQUIPMENT

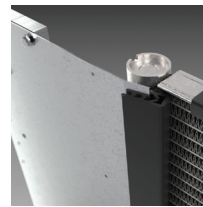
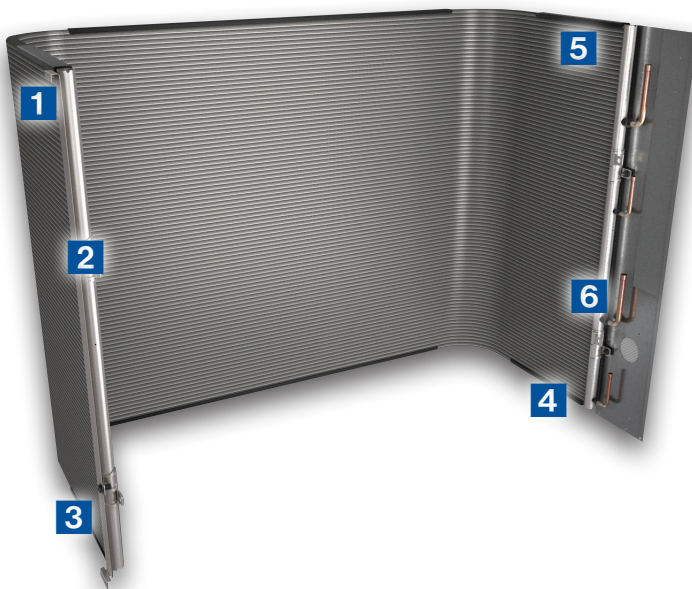
The technologies built into the K-Series™ units help businesses enjoy lasting performance and consistent energy efficiency, season after season.



CONNECT TO NEW OR EXISTING BACNET BUILDING AUTOMATION SYSTEMS

All K-Series units can now be integrated with BACnet, an industry-leading building automation platform. Either factory- or field-installed, the BACnet module allows remote monitoring and adjusting of a building's heating and cooling. Digital sensors are fully programmable, providing precise monitoring and control, while optional password protection prevents unwanted temperature adjustments.

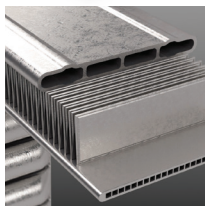
THE ECO-LAST™ COIL. DEPENDABLE BY DESIGN. PERFORMANCE THAT LASTS.



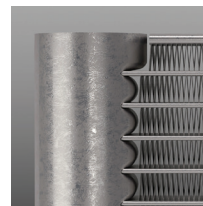
3 SHEET METAL ISOLATORS— Sheet metal isolators are placed along the top, bottom and sides of the coil and unit where needed, to further reduce points of potential corrosion.



4 COIL STABILIZERS—Securing the coil in place helps prevent movement during shipping to avoid damage.



1 ALL-ALUMINUM COIL—By using a series of channels, the Eco-Last™ coil system provides a higher primary surface area than traditional round tubes, resulting in up to 52% less refrigerant required to achieve the same level of heat transfer.



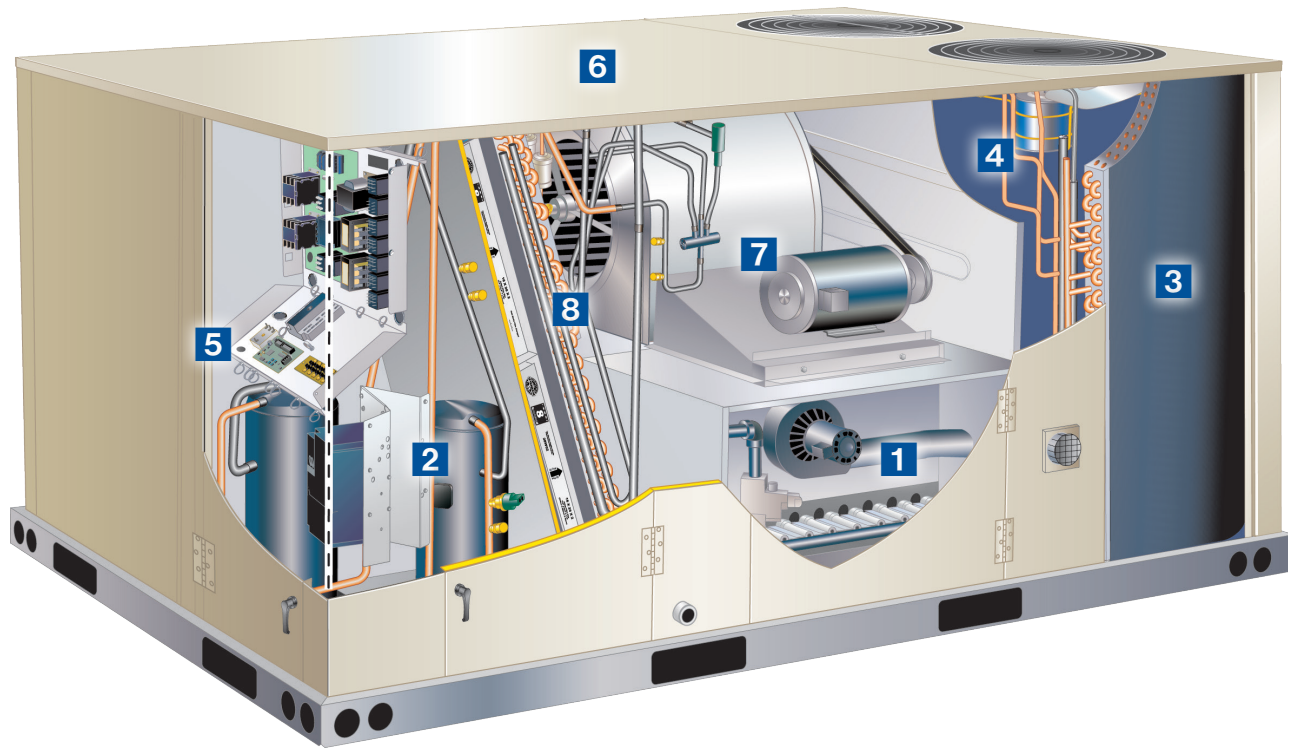
5 OVER-CORE REINFORCEMENTS— For added protection, over-core reinforcements on the top and bottom of the coil are twice as thick as internal tubes and do not circulate refrigerant.



2 COIL MOUNTING ISOLATORS—Rubber inserts help to reduce vibration. Plus, the isolators prevent corrosion by separating the coil from the rest of the unit and eliminating metal-to-metal contact.



6 BRAZED JOINTS—The Eco-Last coil uses up to 20% fewer brazed joints than tube-and-fin coils, reducing the potential for leakage.



- 1 HEAT EXCHANGER/INSHOT BURNERS** – This heating system contains aluminized steel inshot burners, direct spark ignition, electronic flame sensor and combustion air inducer.
- 2 SCROLL COMPRESSOR** – Standard on all units for reliable long-term operation.
- 3 ECO-LAST COIL SYSTEM** – Uses up to 52% less refrigerant, is up to 59% lighter and has up to 20% fewer brazed joints than typical units (standard on all 7.5- to 12.5-ton gas/ electric and electric/electric models; heat pump models use tube and fin coils).
- 4 OUTDOOR COIL FAN MOTORS** – Field installed option low ambient control kit provides reduced outdoor fan operation during low ambient conditions.
- 5 UNIT CONTROL (FIRST FEATURE IN RIGHT COLUMN)** – Control voltage is provided via a 24V (secondary) transformer with built-in circuit breaker protection.
- 6 HEAVY GAUGE STEEL CABINET** – Provides greater structural integrity that includes a full perimeter steel base rail with rigging holes and three sides of forklift slots for transporting.
- 7 SINGLE ZONE VAVBLOWER** – Stages the amount of airflow according to compressor stages, heating demand and ventilation demand.
- 8 AIR FILTERS** – Disposable 2 inch MERV 4 filters are furnished standard with optional field installed high efficiency MERV 8 or 13 air filters available.

EASY ACCESS AND FAST SERVICE IMPROVE PROFITABILITY AND CUSTOMER SATISFACTION

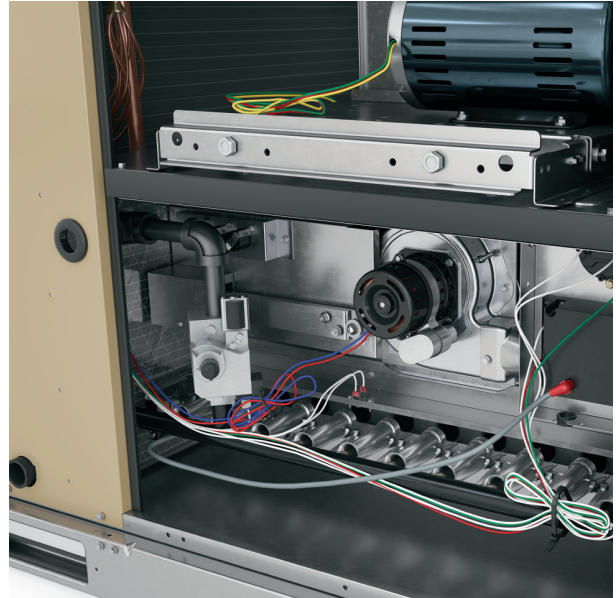


ISOLATED COMPRESSOR COMPARTMENT

Allows performance checks during normal compressor operation without disrupting flow. Simplifies compressor change-outs, when needed, and makes the unit quieter.

HIGH-PRESSURE TRIP SWITCH

Improves reliability by safeguarding the compressor from extreme operating conditions.

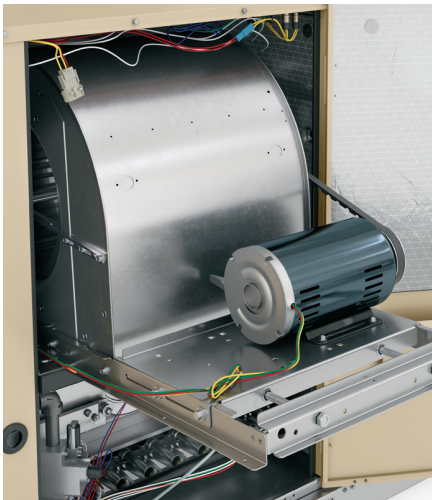


EASY-ACCESS GAS COMPARTMENT

Allows quick and easy access to all gas components for routine service and maintenance.

NO-TROUBLE TROUBLESHOOTING

Easy-access to parts and compartments means that technicians do not have to climb inside the unit to detect or correct technical issues.



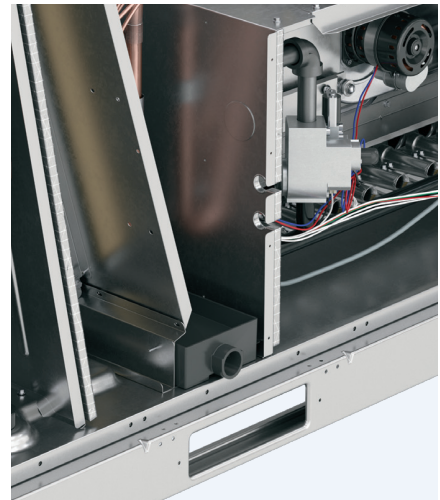
SLIDE-OUT BLOWER COMPARTMENT*

Reduces time needed to adjust fan speed and belt tension and to clean the blower.



BASKET-MOUNTED FAN

Provides easy access, for faster service and replacement.

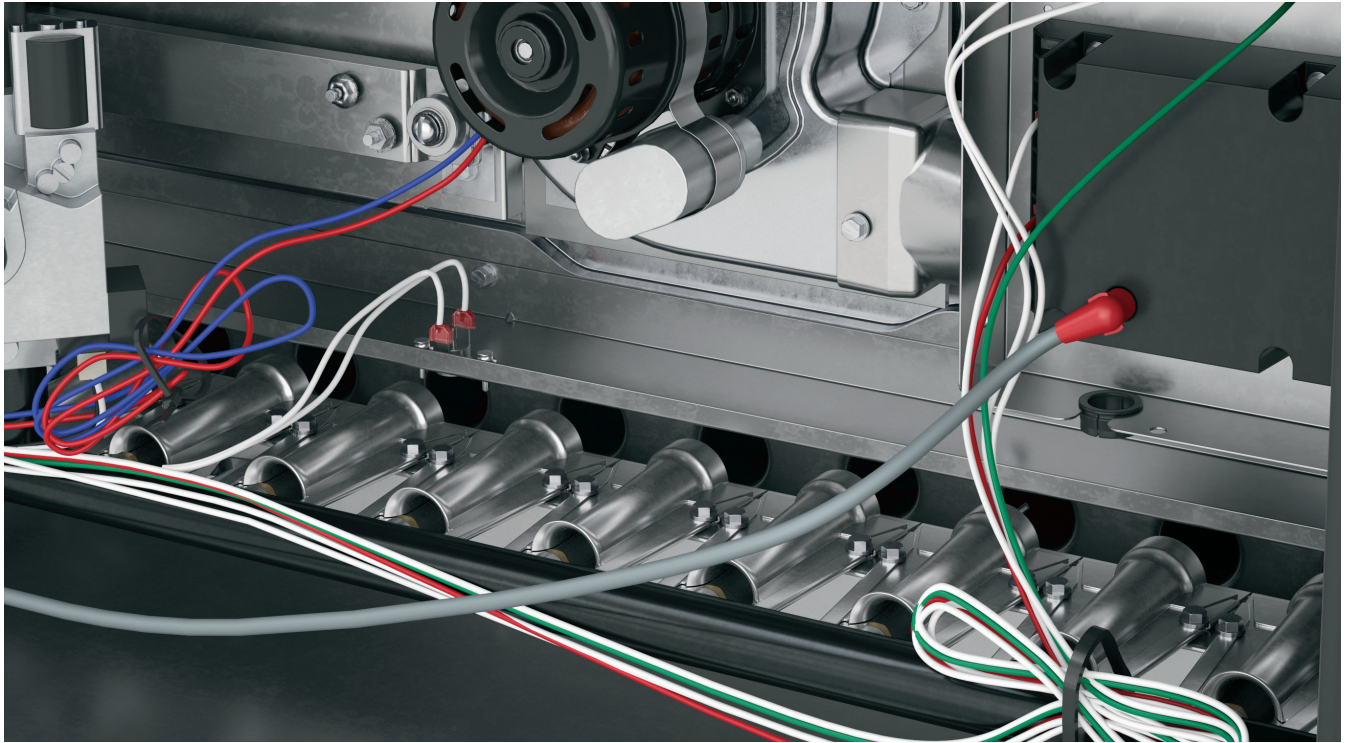


REMOVABLE DRAINAGE PAN

Reversible drainage pan provides installation flexibility and easily slides out for faster cleaning and maintenance.

**Only available on 7.5- to 12.5-ton units*

THOUGHTFUL CONSTRUCTION DELIVERS SERIOUS RELIABILITY.



MORE GAS BURNERS MEAN LESS-FREQUENT REPLACEMENT

With more burners, there's less strain on each burner during heating season, which prolongs the life of the burner and the heat exchanger cell.

WORRY-FREE WARRANTIES

15 year
limited
warranty

on stainless steel
gas heat exchanger

10 year
limited
warranty

on aluminized gas
heat exchanger

5 year
limited
warranty

on compressor

3 year
limited
warranty

on Eco-Last™
coil system

1 year
limited
warranty

on covered
components



DIRECT-DRIVE BLOWER OPTION

The direct-drive blower reduces the time needed to adjust fan speed, belt tensioning or blower cleaning. This option is available on 2- to 5-ton models.

K-SERIES STANDARD-EFFICIENCY ROOFTOP UNIT PERFORMANCE SPECIFICATIONS

	NOM. TON	MODEL	COOLING DATA		HEATING INPUTS (KBTUH)				PHYSICAL DATA	
			EER (EER2*)	SEER/IEER (SEER2*)	LOW	STD.	MED.	HIGH	DIMENSIONS H X W X L [INCHES]	SHIP WT. [LBS.]
GAS/ ELECTRIC UNITS	2	KGB024S4E	(10.6)	(13.4)	N/A	65	108	N/A	39 x 47 x 86	571
	2.5	KGB030S4E	(10.6)	(13.4)	N/A	65	108	N/A	39 x 47 x 86	574
	3	KGB036S4**	12.3 (10.6)	14.0 (13.4)	N/A	65	108	N/A	39 x 47 x 86	596
	4	KGB048S4**	11.5 (10.6)	14.0 (13.4)	N/A	65	108	150	39 x 47 x 86	596
	5	KGB060S4**	11.0 (10.6)	14.0 (13.4)	N/A	65	108	150	47 x 47 x 86	690
	6	KGB074S4T	11.0	15.0	N/A	65	108	150	47 x 47 x 86	690
	7.5	KGC092S4M	11.0	14.6	N/A	130	180	240	47 x 61 x 102	1,003
	8.5	KGC102S4M	11.0	14.6	N/A	130	180	240	47 x 61 x 102	1,023
	10	KGC120S4M	11.0	14.6	N/A	130	180	240	47 x 61 x 102	1,071
	12.5	KGC150S4M	10.8	14.0	N/A	130	180	240	47 x 61 x 102	1,200
	15	KGC180S4M	10.8	14.0	N/A	260	360	480	55 x 92 x 133	2,055
	17.5	KGC210S4M	10.8	14.0	N/A	260	360	480	55 x 92 x 133	2,165
	20	KGC240S4M	10.8	14.0	N/A	260	360	480	55 x 92 x 133	2,380
	25	KGC300S4M	9.8	13.0	N/A	260	360	480	55 x 92 x 133	2,650
					ELECTRIC HEAT SIZES – [KW]					
ELECTRIC/ ELECTRIC UNITS	2	KCB024S4D	(10.6)	(13.4)	5, 7.5, 10				39 x 47 x 86	543
	2.5	KCB030S4D	(10.6)	(13.4)	5, 7.5, 10				39 x 47 x 86	586
	3	KCB036S4B/D	12.3 (10.6)	14.0 (13.4)	7.5, 15				39 x 47 x 86	568
	4	KCB048S4B/D	11.5 (10.6)	14.0 (13.4)	7.5, 15				39 x 47 x 86	568
	5	KCB060S4B/D	11.0 (10.6)	14.0 (13.4)	7.5, 15, 22.5				47 x 47 x 86	661
	6	KCB074S4T	11.2	15.0	7.5, 15, 22.5, 30				47 x 47 x 86	661
	7.5	KCC092S4M	11.2	14.8	7.5, 15, 22.5, 30, 45				47 x 61 x 102	955
	8.5	KCC102S4M	11.2	14.8	7.5, 15, 22.5, 30, 45				47 x 61 x 102	975
	10	KCC120S4M	11.2	14.8	15, 22.5, 30, 45, 60				47 x 61 x 102	1023
	12.5	KCC150S4M	11.0	14.2	15, 22.5, 30, 45, 60				47 x 61 x 102	1152
	15	KCC180S4M	11.0	14.2	15, 30, 45, 60				55 x 92 x 133	1905
	17.5	KCC210S4M	11.0	14.2	15, 30, 45, 60, 90				55 x 92 x 133	2015
	20	KCC240S4M	11.0	14.2	15, 30, 45, 60, 90				55 x 92 x 133	2230
	25	KCC300S4M	10.0	13.2	15, 30, 45, 60, 90				55 x 92 x 133	2500
	NOM. TON	MODEL	COOLING DATA		HEATING PERFORMANCE				PHYSICAL DATA	
			EER (EER2*)	SEER (SEER2*) OR IEER	HSPF (HSPF2*)	COP 47°F	COP 17°F	ELECTRIC HEAT [KW RANGE]	DIMENSIONS H X W X L [INCHES]	SHIP WT. [LBS.]
HEAT PUMP	2	KHB024S4D	(10.6)	(13.4)	(6.7)	N/A	N/A	5-10	39 x 47 x 86	607
	2.5	KHB030S4D	(10.6)	(13.4)	(6.7)	N/A	N/A	5-10	39 x 47 x 86	607
	3	KHB036S4B/D	11.5 (10.6)	14.0 (13.4)	8.0 (6.7)	3.64	2.32	7.5 - 15	39 x 47 x 86	607
	4	KHB048S4B/D	11.4 (10.6)	14.0 (13.4)	8.0 (6.7)	3.72	2.4	7.5 - 22.5	47 x 47 x 86	682
	5	KHB060S4B/D	11.5 (10.6)	14.0 (13.4)	8.0 (6.7)	3.72	2.38	7.5 - 22.5	47 x 47 x 86	727
	7.5	KHC092S4M	11.0	14.1	N/A	3.4	2.25	7.5 - 45	47 x 61 x 102	1137
	8.5	KHC102S4M	11.0	14.1	N/A	3.4	2.2	7.5 - 45	47 x 61 x 102	1169
	10	KHC120S4M	11.0	14.1	N/A	3.4	2.25	15 - 60	47 x 61 x 102	1235
	15	KHC180S4M	10.6	13.5	N/A	3.3	2.05	15 - 60	55 x 92 x 133	2150
	20	KHC240S4M	10.6	13.5	N/A	3.3	2.05	15 - 90	55 x 92 x 133	2350

*EER2, SEER2 and HSPF2 ratings only apply to 1ph equipment below 65,000 btuh.



Visit us at www.allied-commercial.com or contact us at 1-800-448-5872.

© 2023 Allied Air Enterprises LLC, a Lennox International Inc. Company



Litho U.S.A.

ACKS-300 01/23 PC86041