

**INSTALLATION INSTRUCTIONS FOR MILD WEATHER CONTROL KIT (11B97) (612651-01)
USED ON HEAT PUMP UNITS**

⚠ WARNING

Improper installation, adjustment, alteration, service or maintenance can cause personal injury, loss of life, or damage to property.

Installation and service must be performed by a qualified installer or service agency.

⚠ WARNING



Electric Shock Hazard. Can cause injury or death. Unit must be grounded in accordance with national and local codes.

Line voltage is present at all components when unit is not in operation on units with single-pole contactors. Disconnect all remote electric power supplies before opening access panel. Unit may have multiple power supplies.

Shipping and Packing List

Package 1 of 1 contains:

- 1 - Pressure switch (for HCFC-22 units [100087-07])
- 1 - Pressure switch (for HFC-410A units [100087-08])
- 1 - Relay (XP17 and XP21 models - K159) [69J8001]
- 1 - Valve depressor tee
- 1 - Protective conduit for wires (12" in length)
- 8 - Wire nuts
- 2 - Screws
- 4 - 18 gauge wires

Application

This kit should be applied to heat pump units operating in the heating mode during mild weather conditions. The mild weather pressure switch automatically cycles the outdoor fan motor when the head pressure rises above normal operating conditions. The cutout point on this control is below that of the high pressure switch, thereby eliminating nuisance high pressure cutouts.

Installation

1. Disconnect all power to unit.
2. Select appropriate (HCFC-22 or HFC-410A) mild weather pressure switch. Connect the pressure switch to the open connection of the provided tee *before* connecting the tee to the vapor valve.

3. Install the valve depressor tee on the vapor valve service port with the mild ambient pressure switch attached. Run wires through provided conduit for protection (see figure 1).
4. Connect wire terminals of mild weather pressure switch (and relay as needed) as shown in typical wiring connections diagram (figures 2 through 8).
5. Restore power to unit.

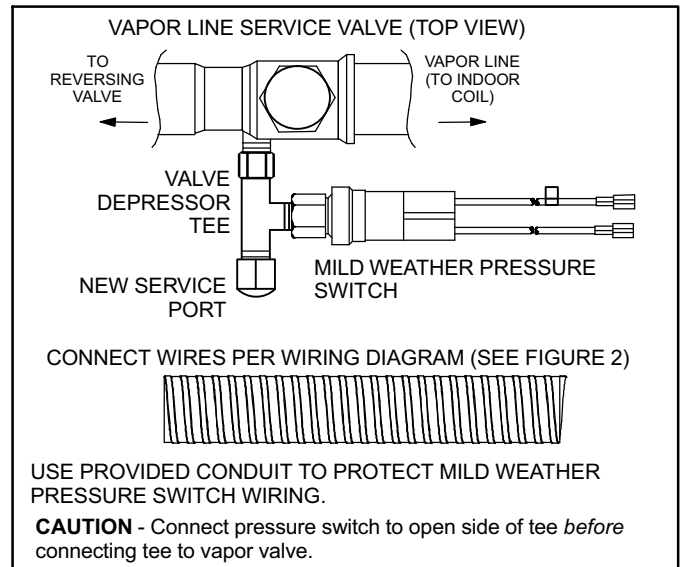


Figure 1. Typical Switch Installation

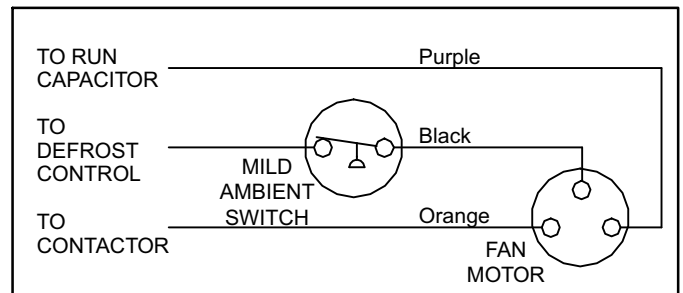


Figure 2. Typical Wiring Connections

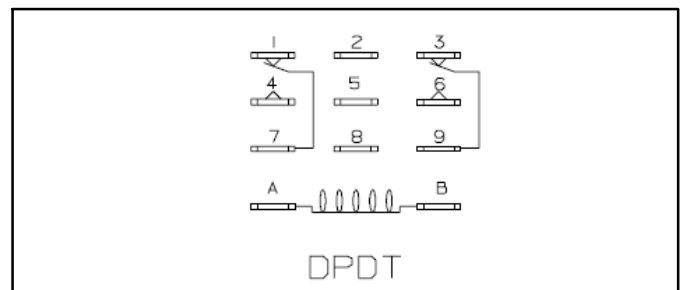


Figure 3. K159 Relay Terminal Designation

Adjustments

The mild weather pressure switch automatically resets; no adjustments are required. The factory-set cut-out and cut-in (reset) points are given in table 1.

Table 1

Cut-out and Cut-in (Reset) Points		
Refrigerant	Cut-Out	Cut-in (Reset)
HCFC-22	375 psig (2551 kPa)	275 psig (1862 kPa)
HFC-410A	550 psig (3965 kPa)	425 psig (3102 kPa)

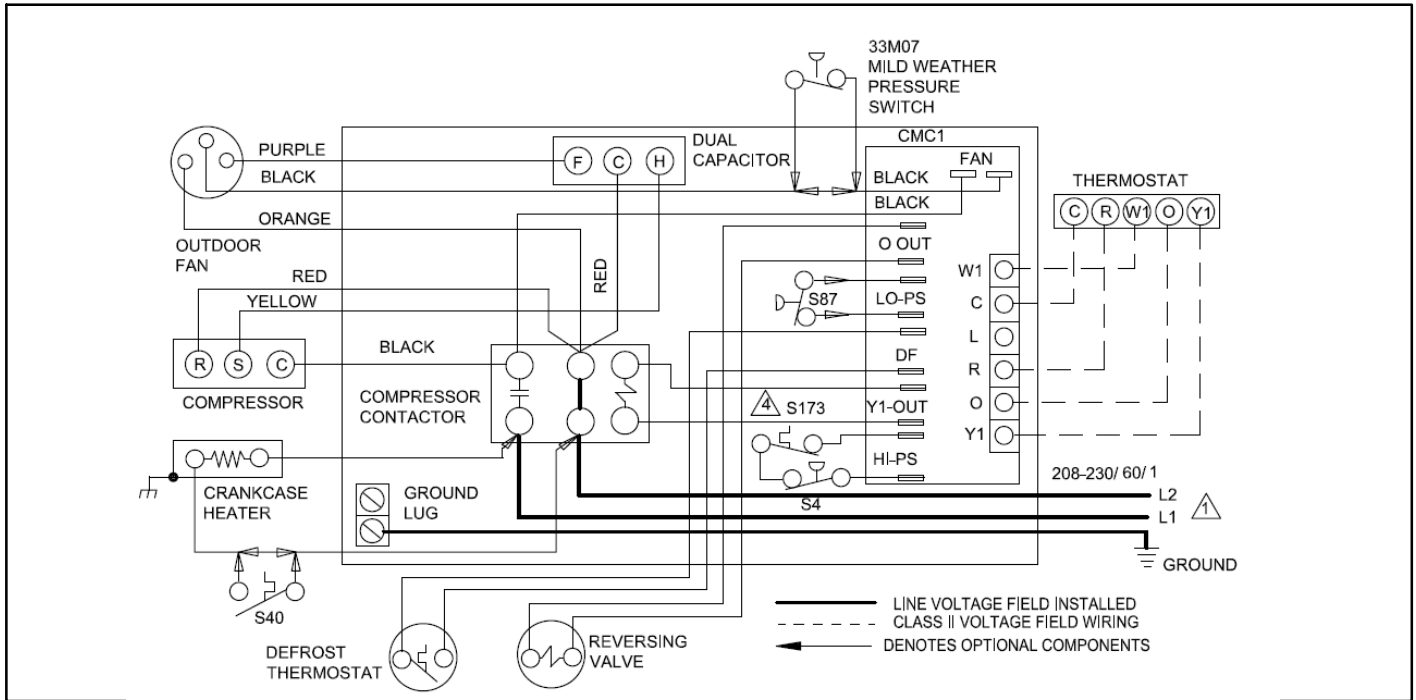


Figure 4. 13 and 14 Series Units Wiring Connections

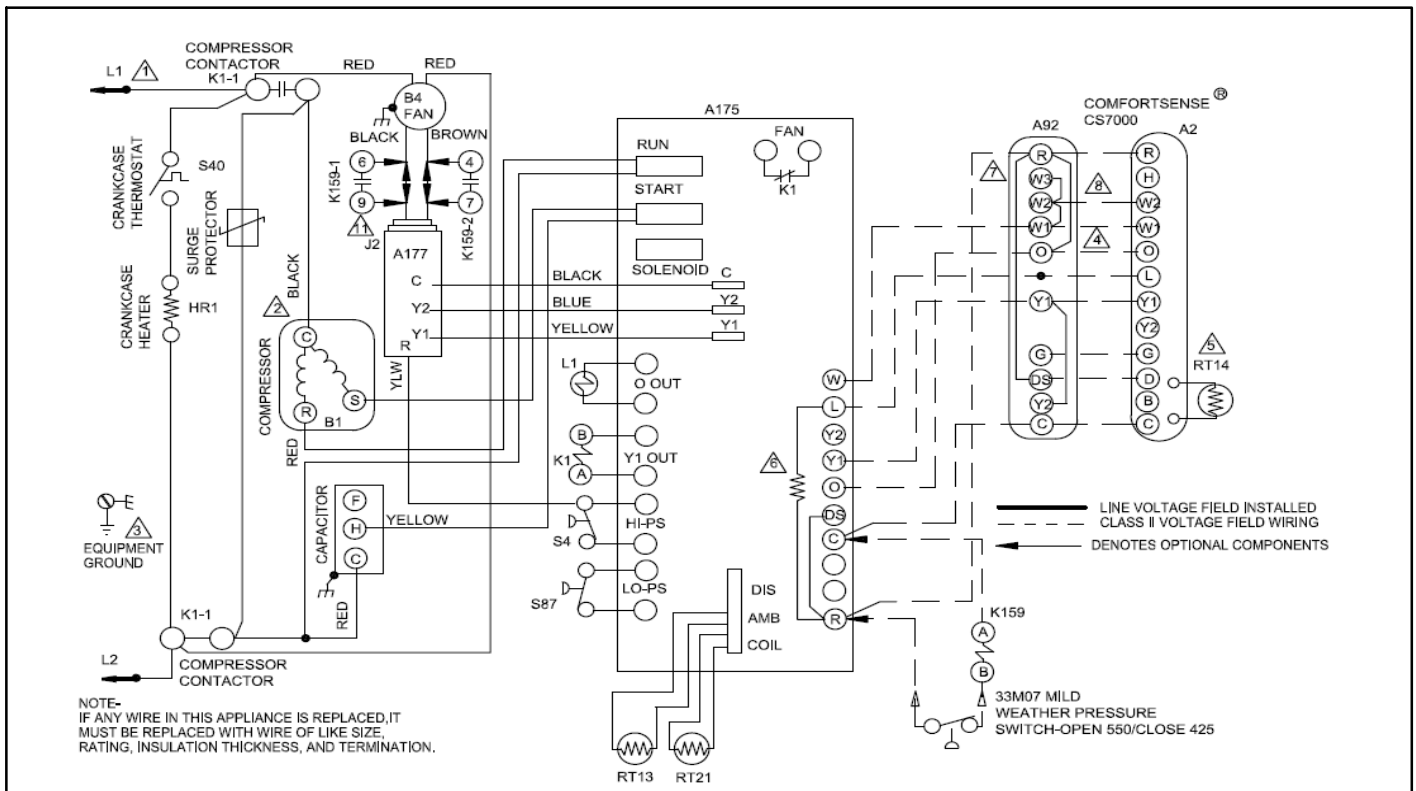


Figure 5. XP17 Series Unit Wiring Connections (Earlier Version A175 Control)

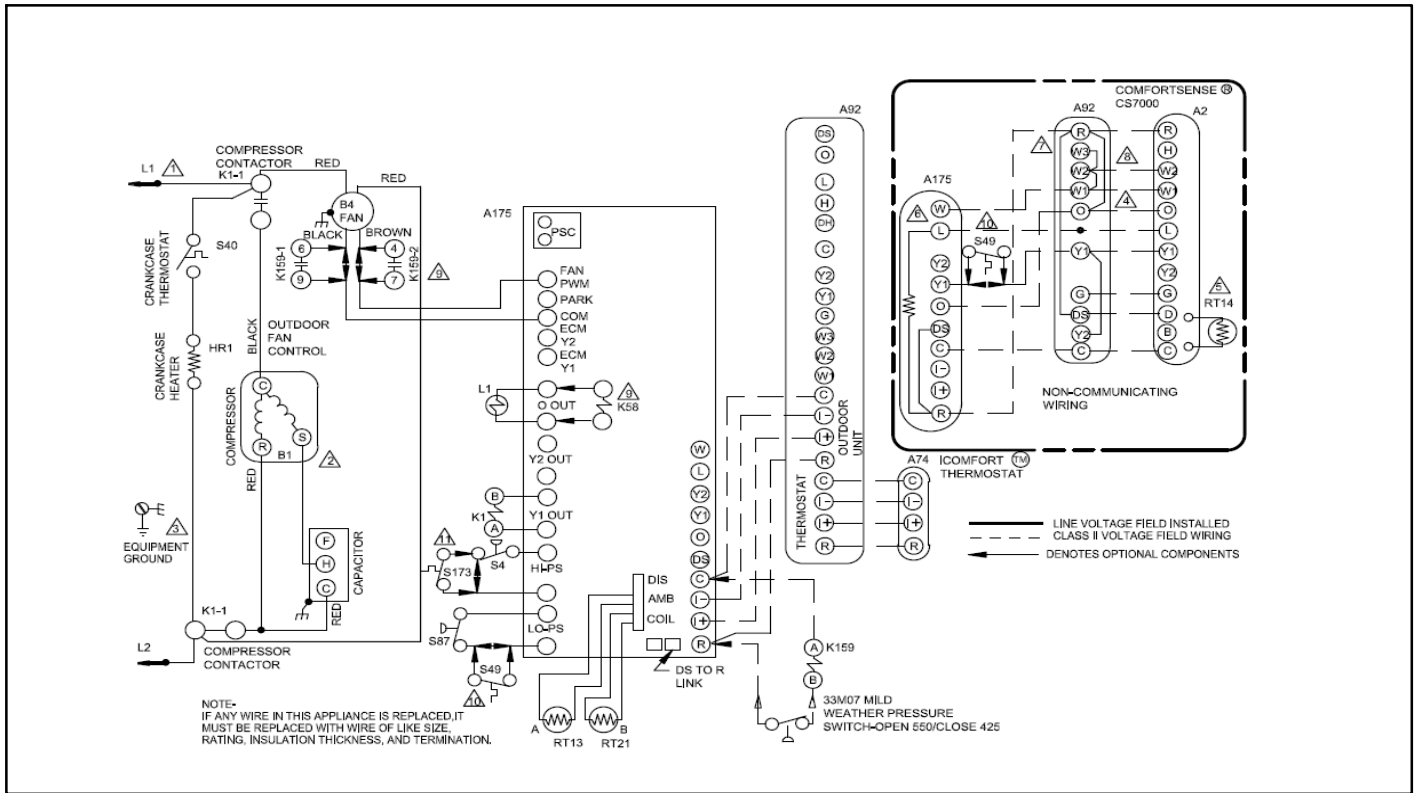


Figure 6. XP17 Series Unit Wiring Connections (Current Version A175 Control)

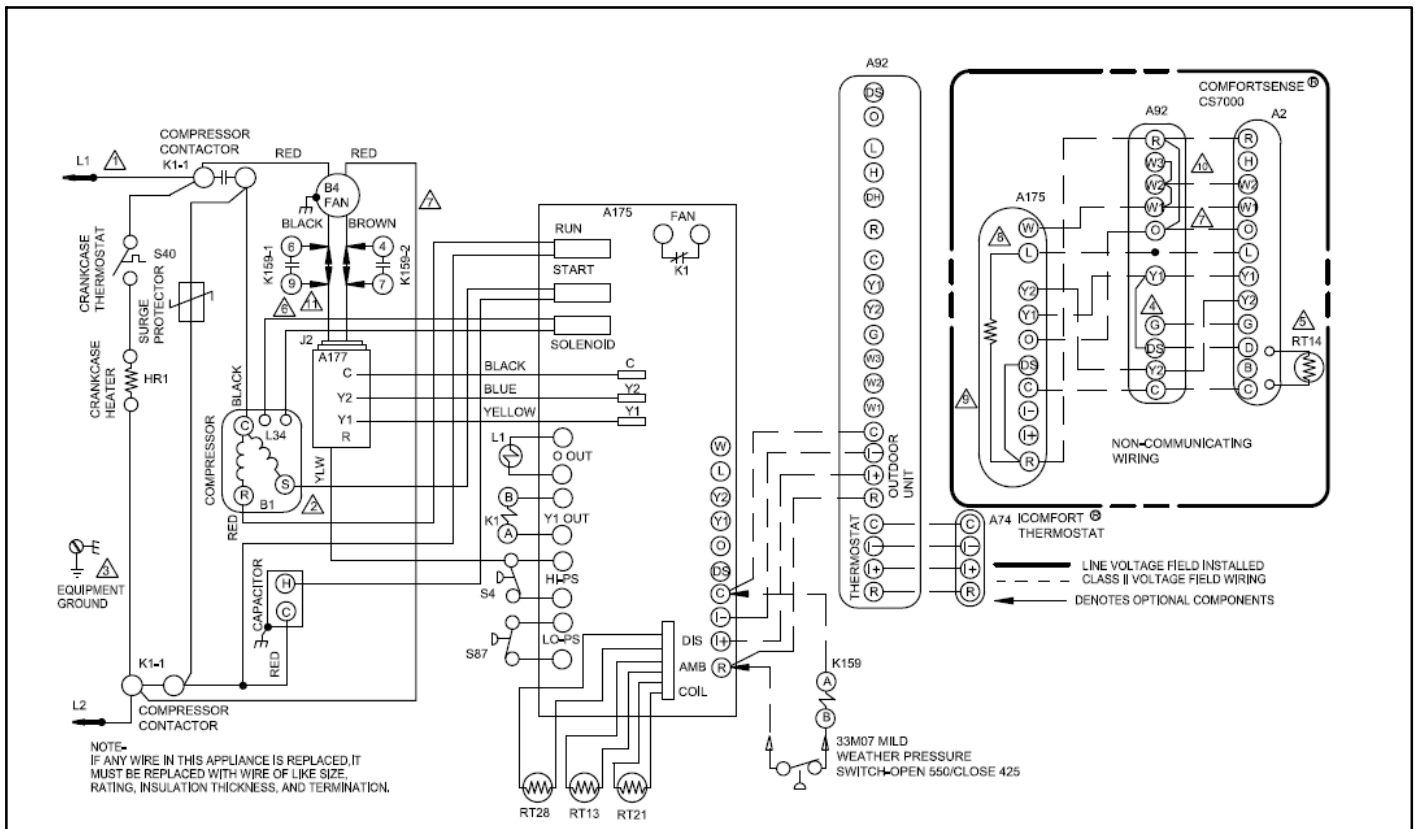


Figure 7. XP21 Series Unit Wiring Connections (Earlier Version A175 Control)

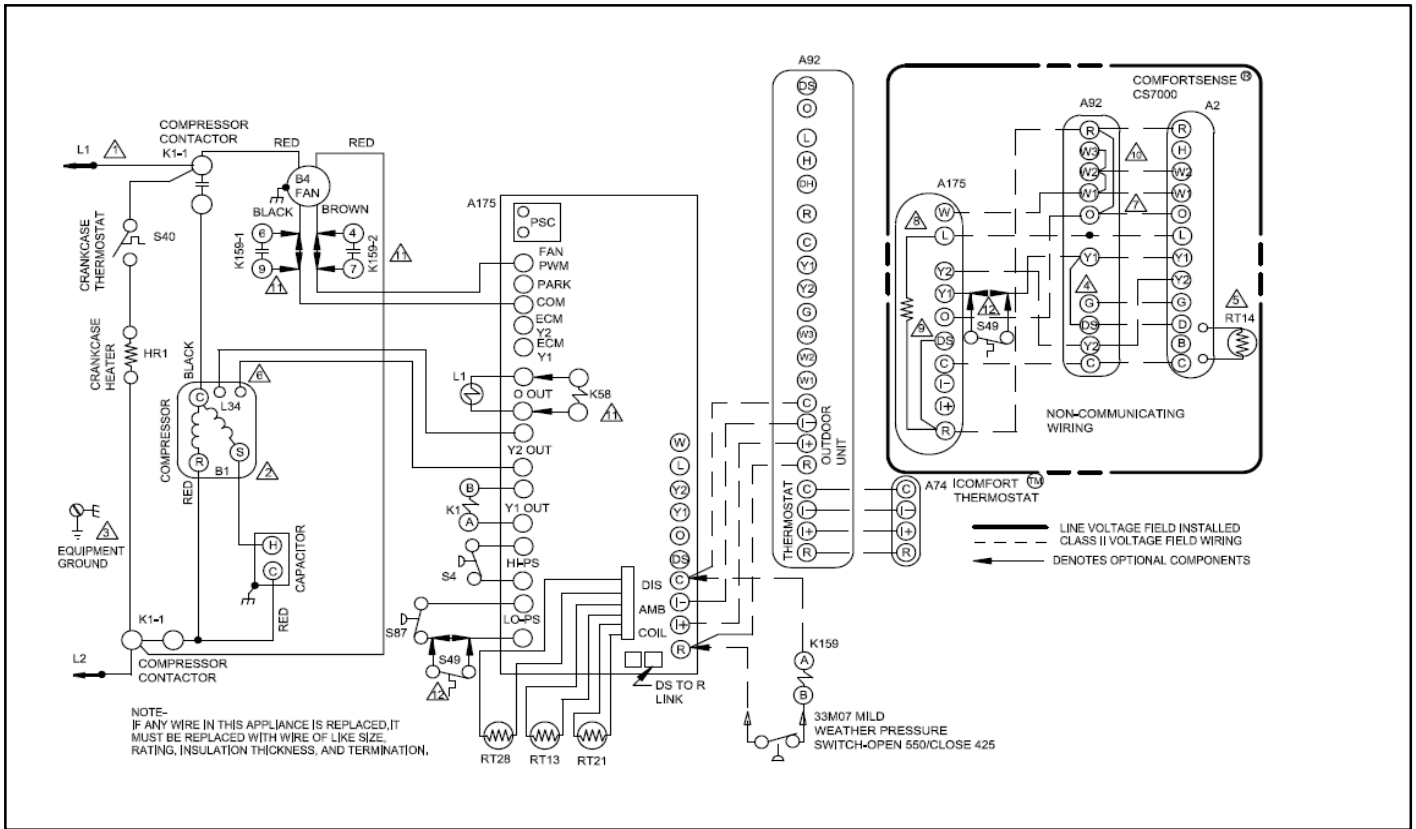


Figure 8. XP21 Series Unit Wiring Connections (Current Version A175 Control)