

INSTALLATION INSTRUCTIONS FOR 24 VOLT COMPRESSOR (TOC1) TIMED-OFF  
CONTROL KIT (LB-50709BA)

**⚠ WARNING**

Improper installation, adjustment, alteration, service or maintenance can cause personal injury, loss of life, or damage to property.

Installation and service must be performed by a licensed professional installer (or equivalent) or a service agency.

**⚠ WARNING**



Electric Shock Hazard. Can cause injury or death. Unit must be grounded in accordance with national and local codes.

Line voltage is present at all components when unit is not in operation on units with single-pole contactors. Disconnect all remote electric power supplies before opening access panel. Unit may have multiple power supplies.

2. If the thermostat bulb and safety controls are in a closed position at the end of the three to seven minute timed-off period, the compressor contactor will activate immediately.
3. If the thermostat or safety controls are in the open position at the end of the timed-off period, the compressor contactor will remain de-energized until a thermostat demand energizes the compressor circuit and all safety controls are closed.

**Shipping and Packing List**

Check unit for shipping damage. Consult last carrier immediately if damage is found.

1 — 24V Timed-Off Control

**Application**

The compressor timed-off control can be applied to any OEM heat pump or air conditioner unit that uses a 24V compressor contactor coil. It also may be used as a direct replacement to SSAC and Robertshaw timed-off controls as listed in table 1.

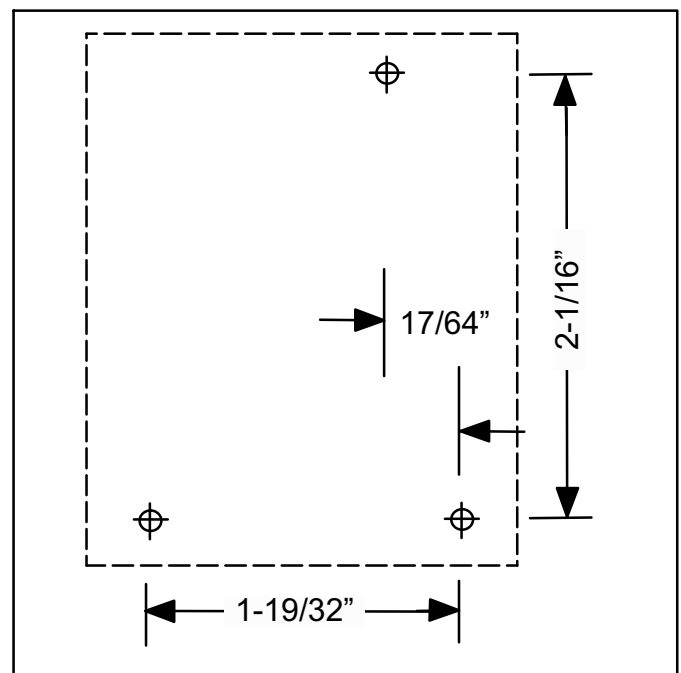
**Table 1. Terminal to Terminal Replacement**

OEM	Robertshaw <sup>®</sup>	SSAC
1	R2, Y2	2
2	R1	3
3	Y1	1

See unit wiring diagram located on outdoor unit access panel for making electrical wiring connections between compressor timed-off control kit and outdoor unit.

**Operation**

1. After the compressor contactor has been de-energized, the timed-off control will keep the compressor contact de-energized for three to seven minutes.



**Figure 1. Drill Hole Dimensions**

**Installation**

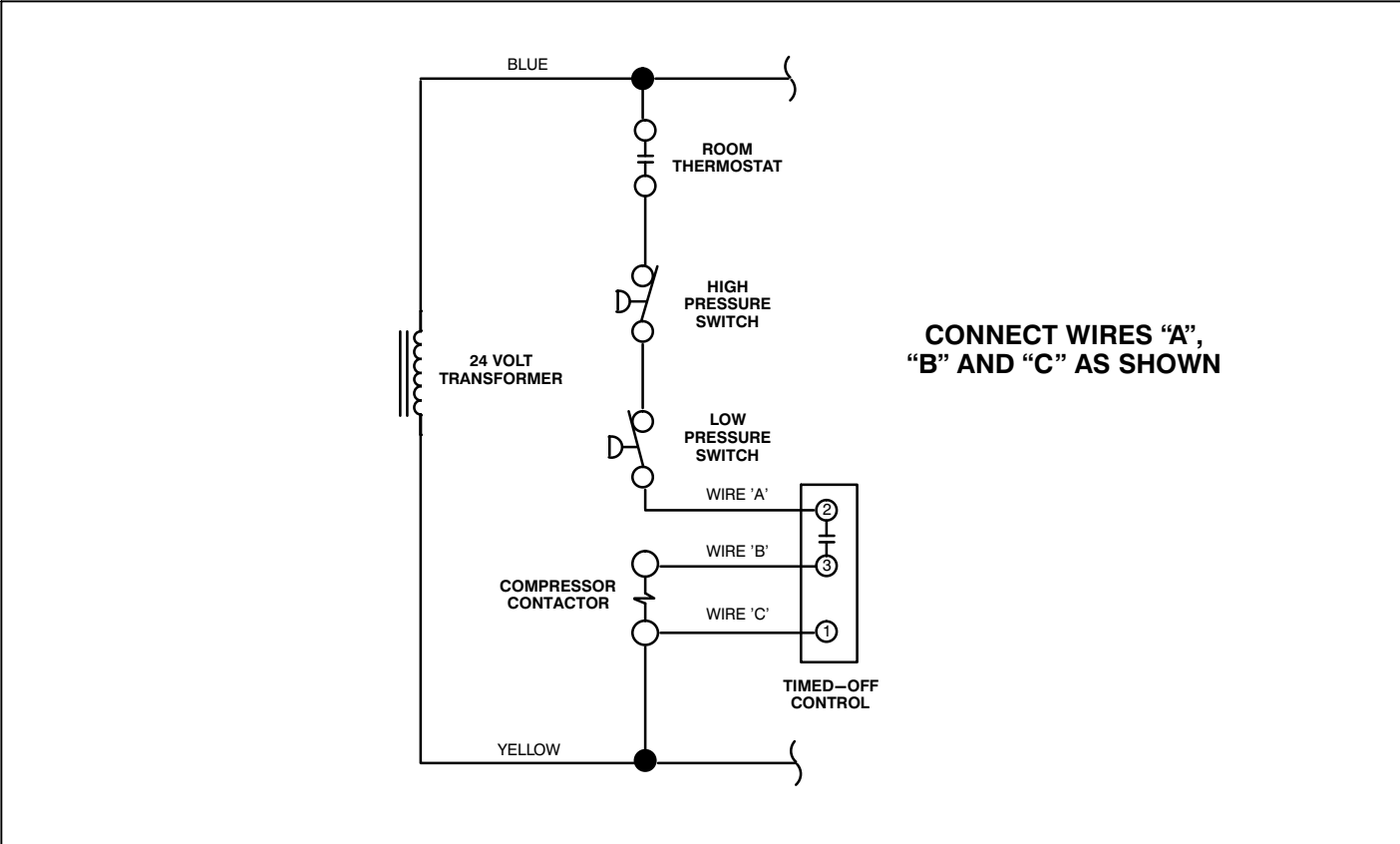
1. Disconnect power to unit.
2. If 1/8" mounting holes exist that match the hole pattern shown in figure 1, install the timed-off control by inserting standoffs in the holes and securing with screws provided. Otherwise, drill 1/8" holes using figure 1 as a guide and install timed-off control.

**Wiring**

Make wiring connections using the wiring diagram shown in figure 2.

1. Remove wire **A** from compressor contactor coil and reconnect to terminal **2** of time-delay control.
2. Add wires **B** and **C** as shown.





**Figure 2. Field Wiring Diagram for Compressor Time-Off Control (LB-50709BA)**