

Project Profile

Mortenson Developments

Engineering Custom Solutions For Architectural Applications



MagicPak® Impact

- **Scope:** With a unique aesthetic design and small footprint, UrbanWorks needed a custom solution to integrate the long-term benefits of MagicPak systems for their client.
- **MagicPak Solution:** The MagicPak engineering team worked closely with the architects to specify a perforated screen to match the building's unique façade and which conforms to the engineering standards of operation.
- **Results:** Because the MagicPak engineering team could deliver the specifications for a custom louver screen, MagicPak systems integrated seamlessly into the final development, leading to zero compromise on design and incredible benefits throughout the life of the building.

Teamwork and novel thinking with MagicPak helps architects maintain the design integrity of the Mortenson Development 30-story high-rise.

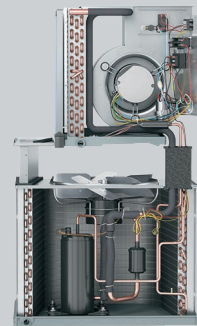
The Challenge

UrbanWorks Architecture had used MagicPak® systems on other projects, and were seeking to incorporate them into a 30-story high-rise with 262 luxury apartments as an easy-to-install and economic solution. Design direction meant that the outward appearance of the systems would need to be considered to fulfill the aesthetic vision for the building.

The Solution

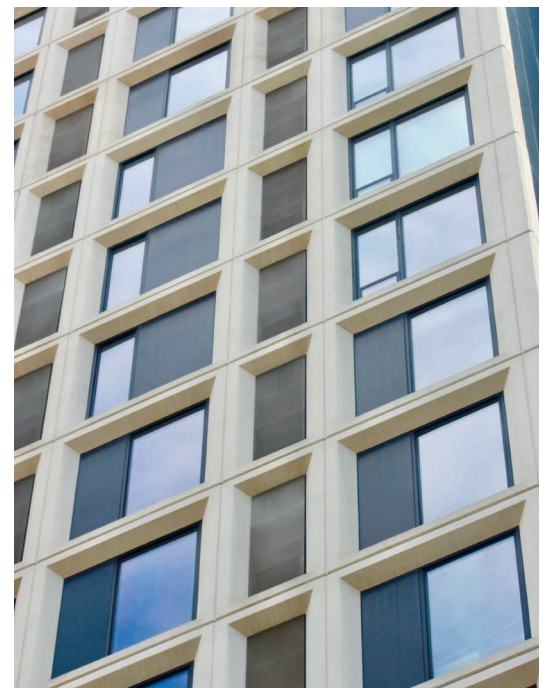
The project was an exciting opportunity for MagicPak to showcase its versatility, and the team was committed to doing whatever it took to support UrbanWorks' design direction for the building's exterior. Case in point, specially designed screens were developed to accommodate each unit's outward facing louvers. The MagicPak engineers made themselves available to the architects, working in close communication with them to ensure system performance would be maintained after the screens were put in place. With the help of MagicPak, architects were able to develop a screen design that seamlessly covered the louvers to help achieve the desired appearance for the building's exterior.

MagicPak All-In-One™ MCE
Electric Heating/Electric Cooling



"A lot of our work is in the multi-family market segment and I would say the majority of them use MagicPak as their mechanical system, which I think really speaks to their presence in the marketplace."

David Miller
Architect
Urban Works





Seamless Integration

Utilizing a screen over the louvers was something that had never been done before. The perforated screen that was ultimately designed by UrbanWorks was the product of a careful balancing act. To ensure the screen would not interfere with the system operation, MagicPak® engineers determined the screens needed to have a 70 percent net-free area. Even with that much open area, the screens were able to conform to the high-rise's design.

It Just Made Sense

David has used MagicPak for countless projects, normally for multi-family developments. As he approached this project, he began to see it as a unique solution over the common design of centralized systems for high rises. To David it just made sense, as MagicPak represents a much lower labor cost for installation and maintenance as well as overall equipment costs. Plus, MagicPak allows for tenants to be direct billed for individual utility use, whereas centralized systems in most high-rises mean shared bills and irresponsible utility usage. So for the building owners seeking an economic option with visual appeal, MagicPak was the ideal solution.

"I would definitely recommend MagicPak to other mechanical contractors and developers."

David Miller
Architect
Urban Works

"I think, from our standpoint, it was fairly streamlined. It just took a little bit of time. Our MagicPak sales representative really did the heavy lifting with interfacing between the engineers and our design intent. I think we're all pretty proud of what we were able to achieve with MagicPak and grateful that they were such good partners."

David Miller
Architect, Urban Works

Optimized
for Multifamily



M-Series™

The MagicPak® M-Series offers reliable, convenient heating and cooling combined with greater flexibility in design, installation and service. The M-Series offers a smaller louver than similar units, and is easily customizable to blend-in with the building's façade.

**MGE - Gas Heating/
Electric Cooling**

**MCE - Electric Heating/
Electric Cooling**

**MHP - Electric Heat Pump
Heating/Cooling**



To learn more about how MagicPak can benefit your next project, visit our website at [MagicPak.com](https://www.MagicPak.com).