

Modern Draperies with Swags

Corner your style in our Modern Swag Roomscape, featuring a corner window using AriA® Metal Hardware dressed in a watercolor floral drapery pattern with swag accents.



Materials & Supplies

Rowley Products

W&I Manchester Sateen Lining

Item

[LNW40/F](#)

W&I Hampton Cotton Interlining

[LNW10/F](#)

Buckram

[Buckram](#)

R-TEX Fusible Stabilizer

[FB10/F](#)

Micro Welt Cord - 3/32"

[WC83](#)

Stayfold Drapery Fold Control Device

[STF5 & SFT6](#)

Professional Shears

[CU24](#) or [CU24/L](#)

Pattern Making Film

[DYC15/3](#)

Pen Style Chalk Marker

[WW13/](#)

R-TEX Sausage Bead Weights - 3/32"

[LW79](#)

Modern Draperies with Swags: Step-By-Step Instructions

Panels:

Learn a quick and efficient way to add Micro Welt Cord to the top of drapery panels.



- 1 Cut the fabric for your panels. The panel cut length will be the panel finished length plus the bottom hem allowance plus the header allowance plus about 2". If you're using a patterned fabric, cut on the pattern repeat and remove excess later.
- 2 Cut fabric strips and make enough Micro Welt Cord for the top edge of your drapery panels. These may be cut on the straight of bias, depending on the fabric pattern. Either will work.

- 3 Seam widths together if necessary. Cut away the selvages at the seam.



- 4 Add a drapery weight at the seam join in the bottom hem.



- 5 Sew the bottom hem in your method of choice.

- 6 Table the drapery panel with the face fabric up. Secure the bottom hem with pins or weights while you're working on the drapery header area.



- 7 At the working end of the table, press the fabric to the Finished Length (FL) plus 1".



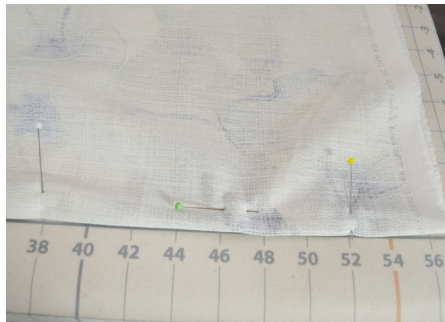
- 8 From the top fold, measure down twice the size of the Buckram and make a line. Cut on the line to remove the excess fabric.



- 9 Unfold the fabric of the drapery header. Place the Micro Welt Cord on the fabric with the welt Seam Allowance (SA) at the fold.



- 10 Fold the header fabric over the Micro Welt Cord and pin in place.



- 11 Stitch the top of the panel with the Micro Welt Cord sandwiched between the layers of drapery fabric. Sew right beside the Micro Welt Cord.



- 12 Press the top of the panel with the SA to one side.



- 13 Cut your linings, and interlinings if using, seam and close bottom hems in your method of choice.

- 14 Place the panel on the table, right side down and the header at the working end of the table.

- 15 Layer the interlining, if using, and then the lining on the panel, trim if necessary and tuck these under the top seam allowance of the panel.



- 16 Place the Buckram at the top edge of the panel over the SA.



- 17 Tuck the drapery header fabric around the Buckram. Press. Press the side hems. Close in your method of choice.



- 18 Figure pleats and spaces. Stitch and admire your panel.



Swags:

- 1 Draft a pattern for your drapery swag using a piece of lining. Pin the lining on the edge of your worktable the Finished Width (FW) of the swag. The top edge should create a swoop to allow for the drapery pleats to show.



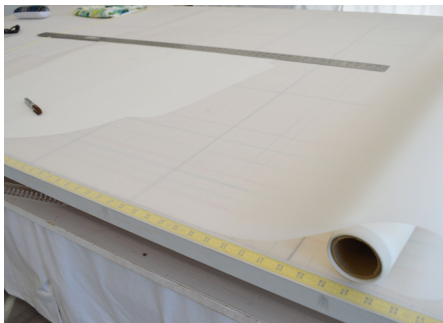
- 2 Create pleats in the swag by folding the sides at the top edge of the lining toward the center and pin once you like the way the folds look. Check the total FL of the swag and make adjustments if necessary.



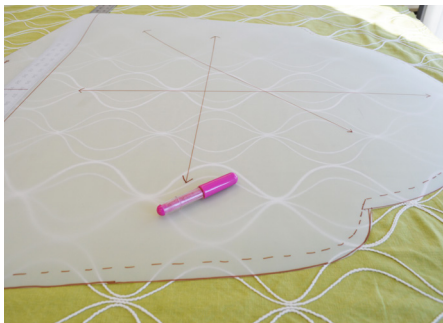
- 3 Trim the excess fabric along the top edge of the lining pattern.



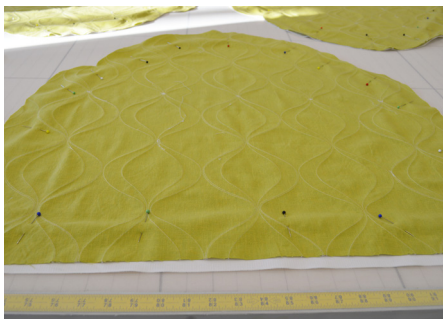
- 4 Make a permanent pattern for the modern drapery swags by placing your lining pattern on Pattern Making Film and tracing. Add SA's before cutting out with utility scissors.



- 5 Place the template on the Face Fabric (FF). Using a Chalk Marker, trace around the pattern and cut out the swag.



- 6 Place the swag on the lining, right sides together. Pin in place. Cut out the lining.



- 7 Cut out bias strips and make enough welt for the swags. To help the swag drape better, use Sausage Bead Weight as your welt cord.



- 8 Insert the welt between the swag fabric and lining and stitch. Sew along the top edge of the swag, leaving a hole for turning the swag right side out.



- 9 Clip seams and corners of swag.



- 10 Turn swag right side out. Press. Close the hole in your method of choice.



- 11 Pin the swag to the table again. Check the top swoop and the finished length. Pin the top pleats.
- 12 Stitch the top edges of the least in your method of choice.
- 13 Insert drapery pins behind the top pleats of the swags. Or, if you have the drapery rings, these may be sewn instead of using drapery pins.



QUICK TIP

Change the look of your draperies and panels by adding Modern Swags!