

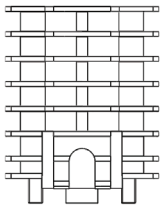


**Finials - 1 1/8"**

Thank you for purchasing your new decorative finials. With proper installation and care, they will provide you with many years of beauty and trouble-free use. Clean with a soft cloth. Do not use harsh or abrasive cleaning supplies or polishes which may damage the finish.

**Components included for each Finial:**

- Plastic Plug (comes attached to finial).



FM118PL

**NOTE:** The plastic plug is designed to lock in to the pole, ensuring the finial is securely attached.

If a finial needs to be removed after it is installed on a pole, a new plastic plug must be used to insure proper attachment.

It is highly recommended that extra plastic plugs are purchased in the event a finial needs to be removed.

**Components included for each H-Rail Finial:**

- Allen Wrench & extra set screw included.
- H-Rail Mount (requires removal of plastic plug to access).



Allen Wrench



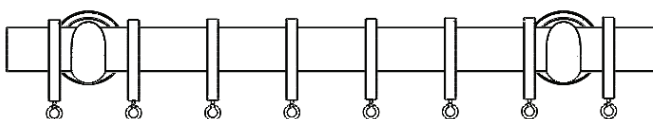
Extra Set Screw



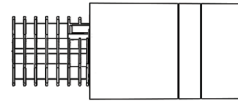
H-Rail Finial Mount

**Finial Installation for Pole Mount:**

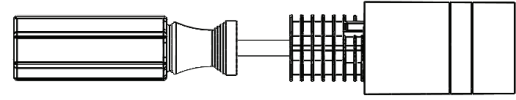
1. Install all hardware and pole.



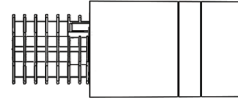
2. Locate the finial. Check the finial plastic plug to ensure it is securely attached to finial.



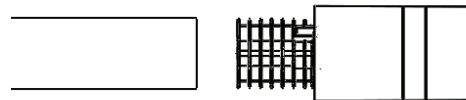
**NOTE:** If the plastic plug is loose, tighten the plastic plug with a Phillips screw driver.



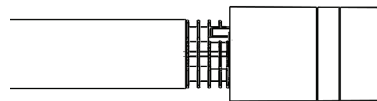
3. Finial orientation should be determined before attaching to pole.



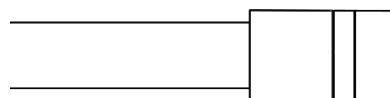
4. Align the plastic plug parallel to the pole.



5. Insert the plastic plug into the pole, while keeping the plastic plug parallel to the pole, and the finial in the correct orientation.

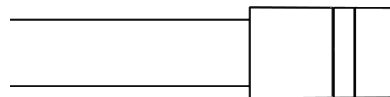


6. To complete installation push the finial until it contacts the pole. (Hold the finial in the desired orientation during this step).

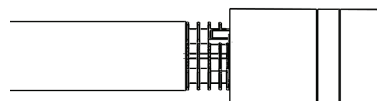


**Finial Removal Instructions:**

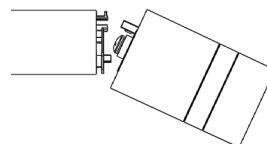
1. To remove the finial, pull the finial straight out of the rod without twisting.



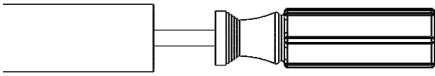
2. Keep the finial parallel to the pole during removal to prevent damaging the plug. If the plug is damaged, continue to step 3.



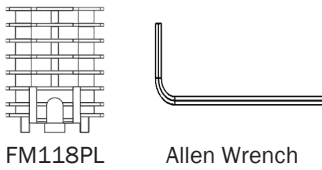
3. Push finial down until it breaks free of the plastic plug.



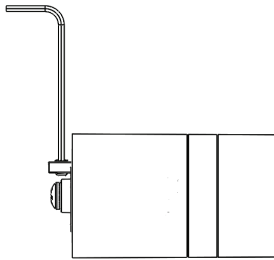
4. Push the plastic plug into pole.



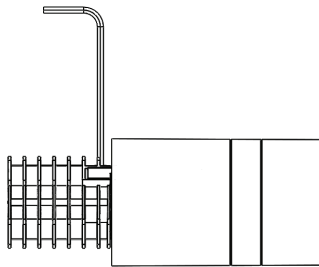
5. Locate the spare plastic plug and Allen Wrench. It is recommended to purchase spare plastic plugs (FM118PL) with the finials.



6. Loosen the H-Rail mounting set screw.



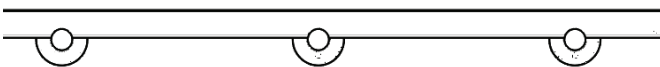
7. Attach plug to the H-Rail mount. Hand tighten the fastener plus 1/2 turn.



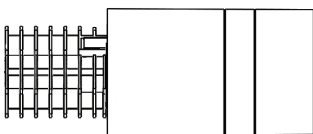
8. The finial is ready to attach to the pole. Follow steps 1 thru 6 below.

**Finial Installation for H-Rail Mount:**

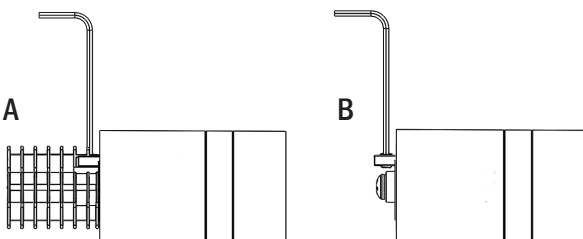
1. Install all hardware and H-Rail.



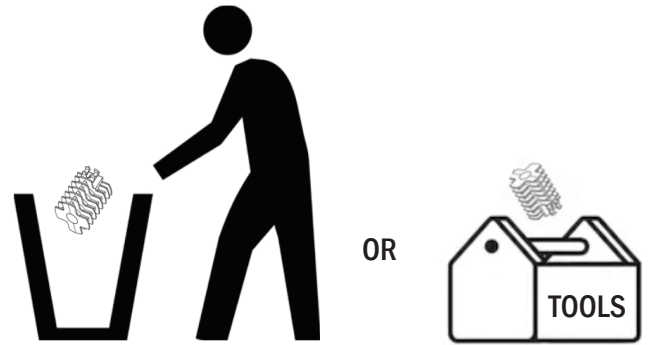
2. Locate the finial.



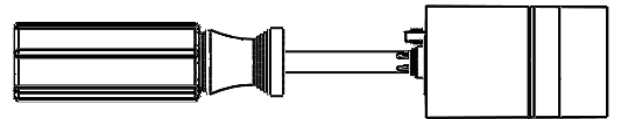
3. Remove the plastic plug by loosening the set screw.



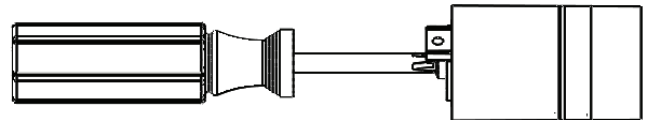
4. Discard or save the plastic plug.



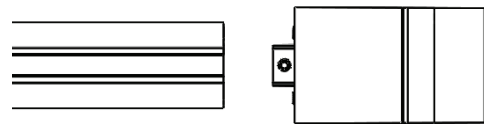
5. If needed, adjust the finial orientation by loosening the Phillips head screw and rotating the H-Rail finial mount.



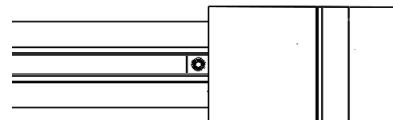
6. Rotate the finial mount to the desired location and tighten the Phillips head screw to hold the finial in place.



7. Place the finial into the H-Rail track by aligning the finial mount to the H-Rail .



8. Push the finial until it contacts the H-Rail track.



9. To complete your finial installation, tighten the set screw.

