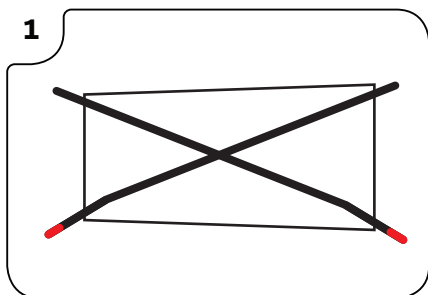


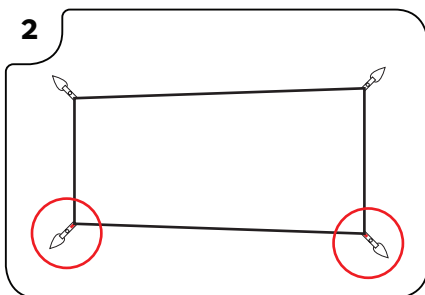
# How to set up your Marmot Tungsten UL 1P Tent

1



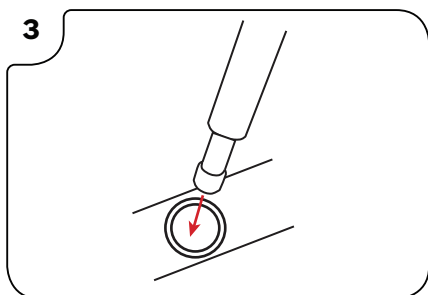
CONNECT POLES LEAVING NO SPACE BETWEEN SECTION AND LAY MAIN POLES ON TENT BODY

2



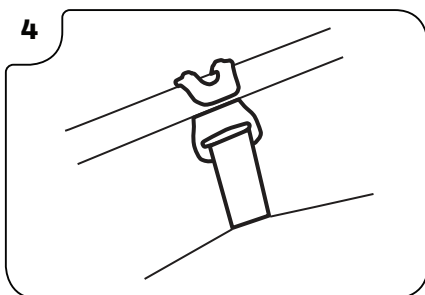
INSERT RED POLE TIPS INTO FRONT TENT CORNERS WITH RED TABS

3



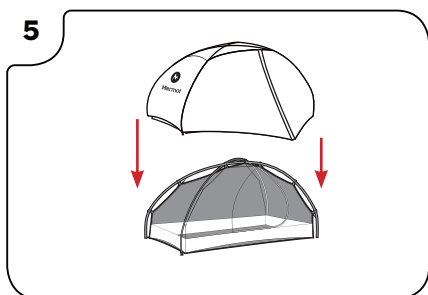
INSERT POLE TIPS INTO GROMMETS

4



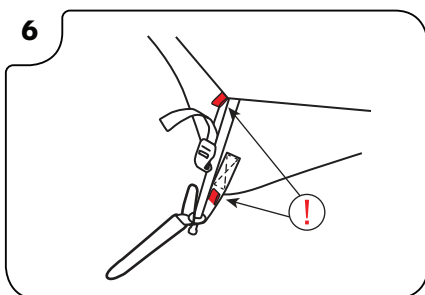
CONNECT CLIPS TO POLES  
MATCH WEBBING COLOR TO POLE COLOR

5



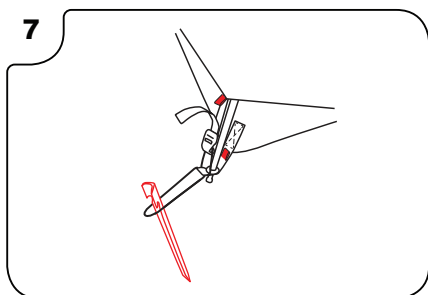
PULL RAINFLY OVER TENT BODY

6



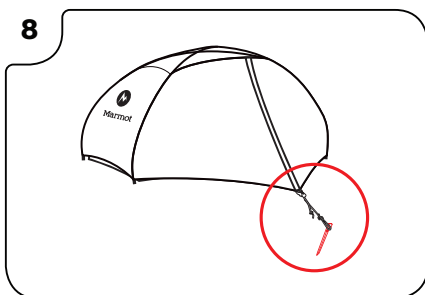
MATCH UP RED TABS ON FRONT CORNERS.  
HOOK BUCKLE AROUND CORD AND PULL TO TIGHTEN

7



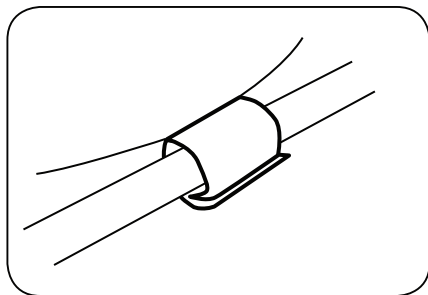
STAKE OUT CORNERS

8

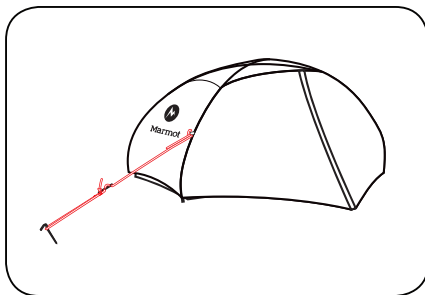


STAKE OUT VESTIBULES

## OPTIONAL



LOOK UNDER FLY - VELCRO FLY  
TO TENT POLES



GUY OUT IN HIGH WIND

For additional information about your Marmot® tent  
please visit [www.marmot.com](http://www.marmot.com)