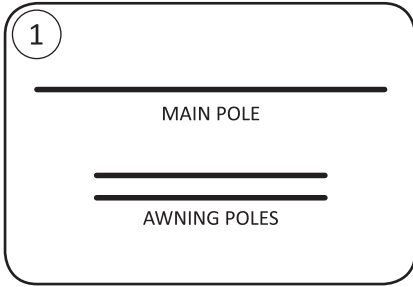
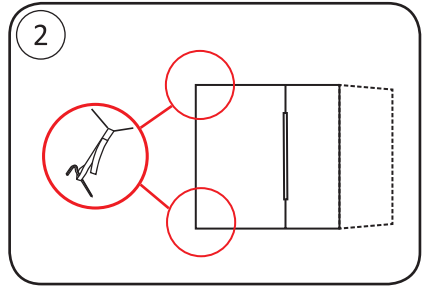


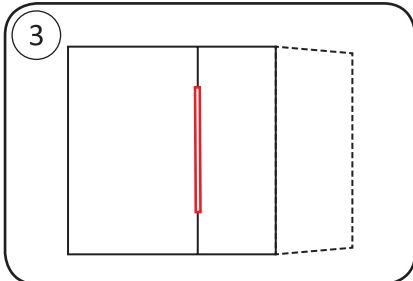
## How to set up your Marmot Mantis 2P Plus /3P Plus



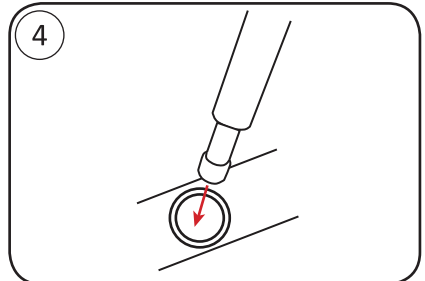
CONNECT POLES LEAVING NO SPACE BETWEEN SECTIONS



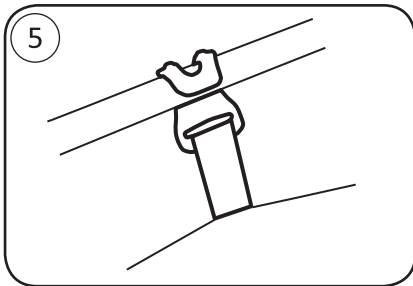
STAKE DOWN REAR CORNERS



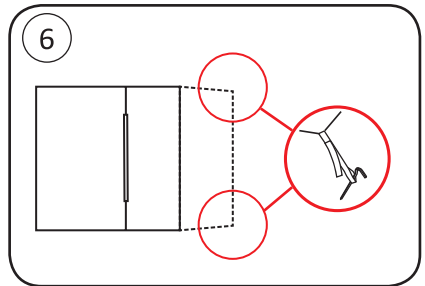
INSERT MAIN POLE THROUGH POLE SLEEVE



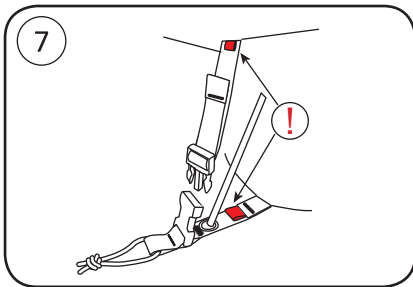
INSERT POLE TIPS INTO GROMMETS



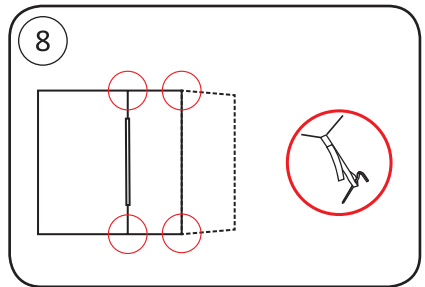
CONNECT CLIPS



STAKE OUT FRONT CORNERS

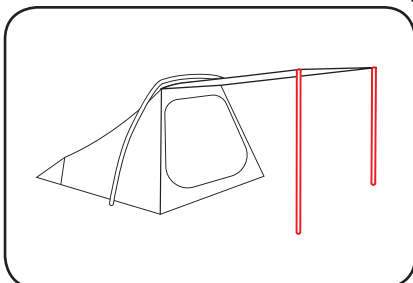


NOTE RED TABS ON FRONT CORNERS  
CONNECT BUCKLES AND PULL TO TIGHTEN

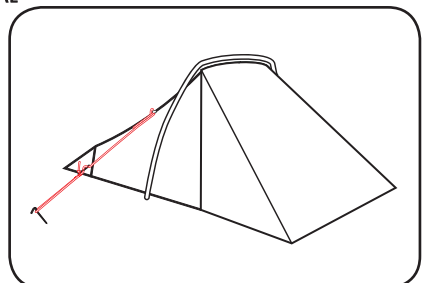


STAKE OUT REMAINING LOOPS

### OPTIONAL



CREATE AWNING WITH INCLUDED POLES



GUY OUT IN HIGH WIND

For additional information about your Marmot® tent  
please visit [www.marmot.com](http://www.marmot.com).