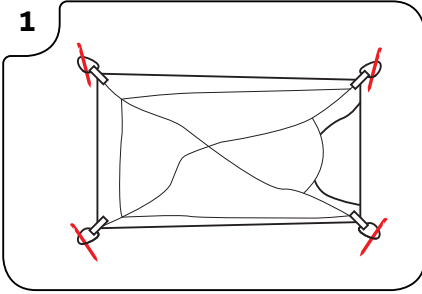


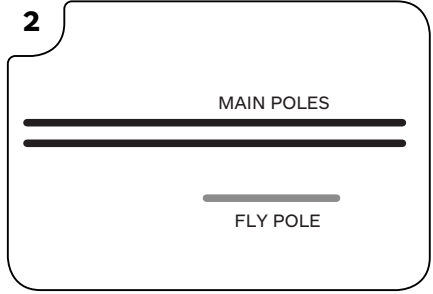
## How to set up your Marmot Hammer 2P tent

1



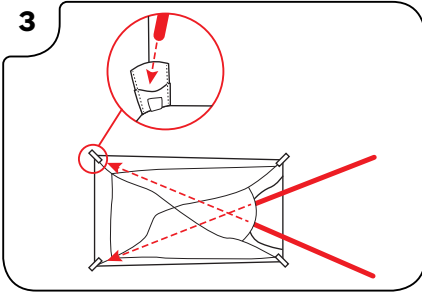
LAY TENT OUT FLAT WITH FLOOR SIDE DOWN AND LOOSELY STAKE OUT CORNERS

2



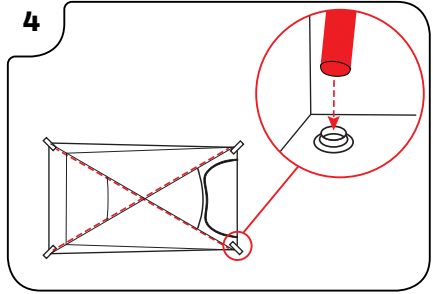
CONNECT POLES LEAVING NO SPACE BETWEEN SECTIONS

3



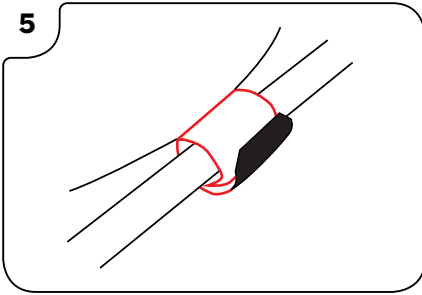
INSERT CLOSED POLE TIPS INTO THE TENT AND INSERT INTO SMALL POCKETS IN BACK CORNERS

4



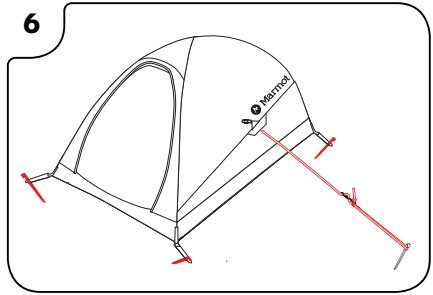
FLEX BOTH POLES TO RAISE CANOPY FROM THE INSIDE - SECURE OPEN POLE END ON SNAP IN FRONT CORNERS

5



ENTER TENT AND ATTACH THE VELCRO STRAPS TO SECURE POLES IN POSITION

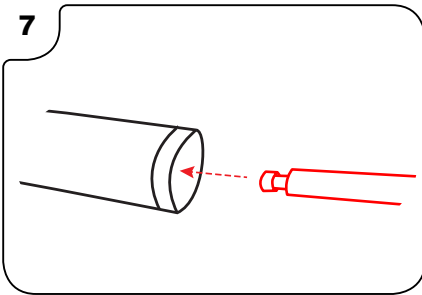
6



REFINE STAKE PLACEMENT & GUY OUT IN HIGH WIND IF NEEDED

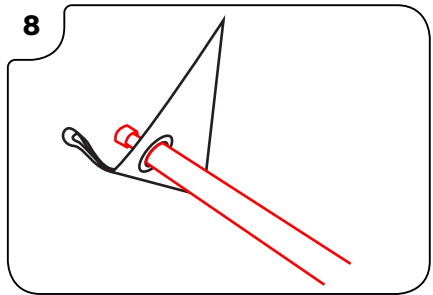
### OPTIONAL FLY

7



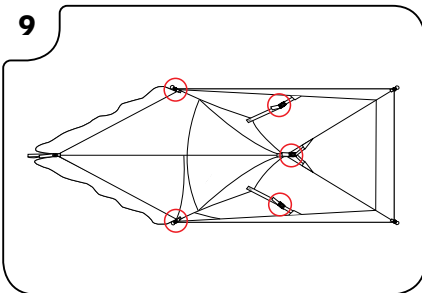
SLIDE FLY POLE THROUGH POLE SLEEVE ON UNDERSIDE OF FLY

8



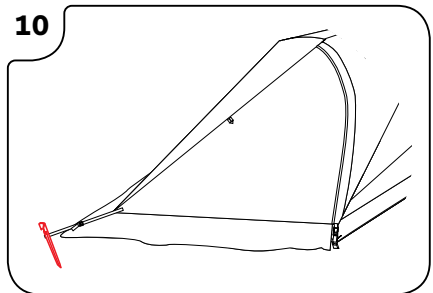
INSERT TIPS INTO GROMMETS LOCATED ON FRONT SIDES OF TENT DOOR

9



BUCKLE THE FLY TO THE CANOPY IN FIVE LOCATIONS AND ADJUST TENSION

10



MAKE SURE FLY DOOR IS ZIPPED AND STAKE OUT THE VESTIBULE

For additional information about your Marmot® tent please visit [www.marmot.com](http://www.marmot.com)