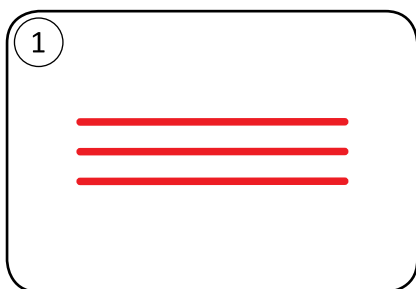
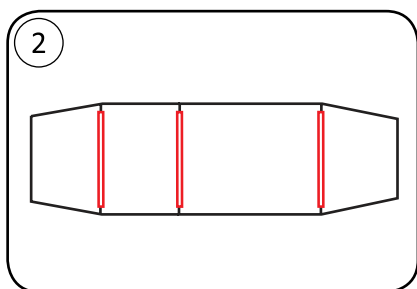


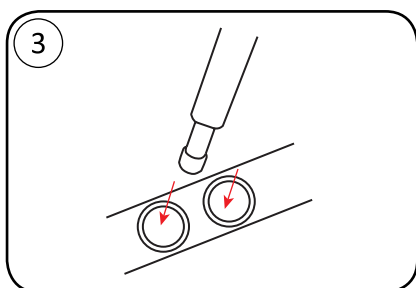
How to set up your Marmot Haldor 2P/3P



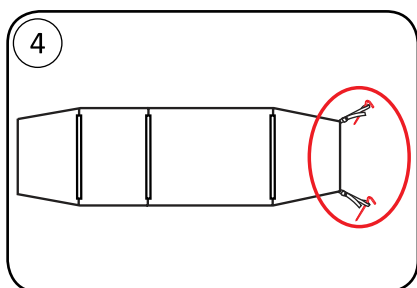
CONNECT POLES LEAVING NO SPACE BETWEEN SECTIONS



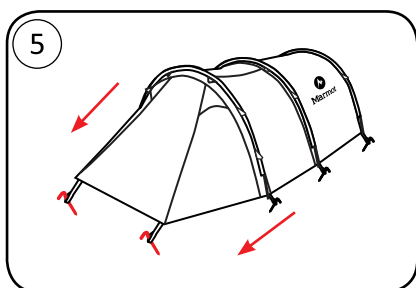
INSERT POLES THROUGH POLE SLEEVES



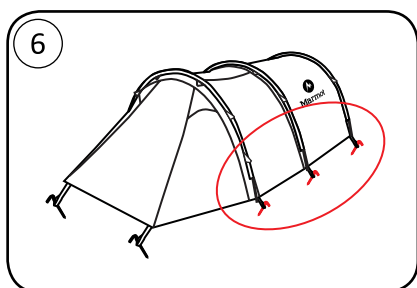
INSERT POLE TIPS INTO EITHER GROMMET



STAKE DOWN TENT AT ONE END

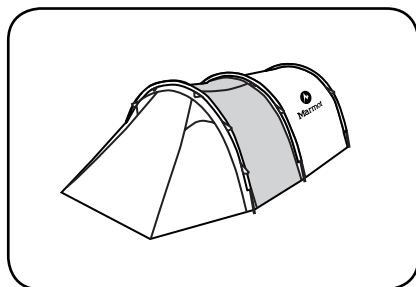


PULL TENT FORWARD AND STAKE OUT OTHER END

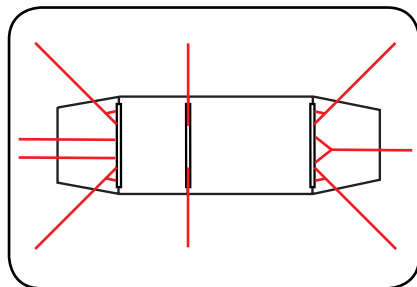


STAKE OUT LOOPS ON SIDES OF TENT

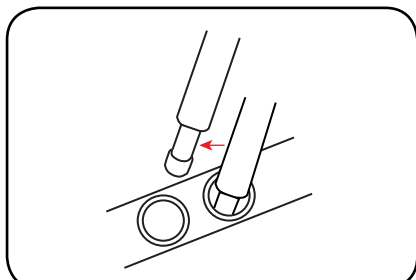
OPTIONAL



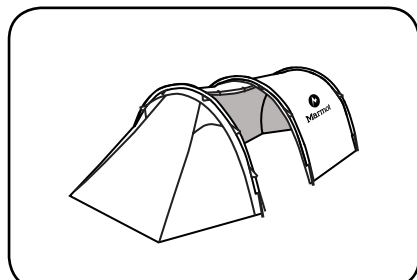
ZIP OFF VESTIBULE EXTENSION AND RE-ATTACH VESTIBULE TO TENT



GUY OUT IN HIGH WIND



MOVE POLES TO INNER/OUTER GROMMET TO INCREASE/DECREASE TENSION



INNER TENT IS REMOVABLE